



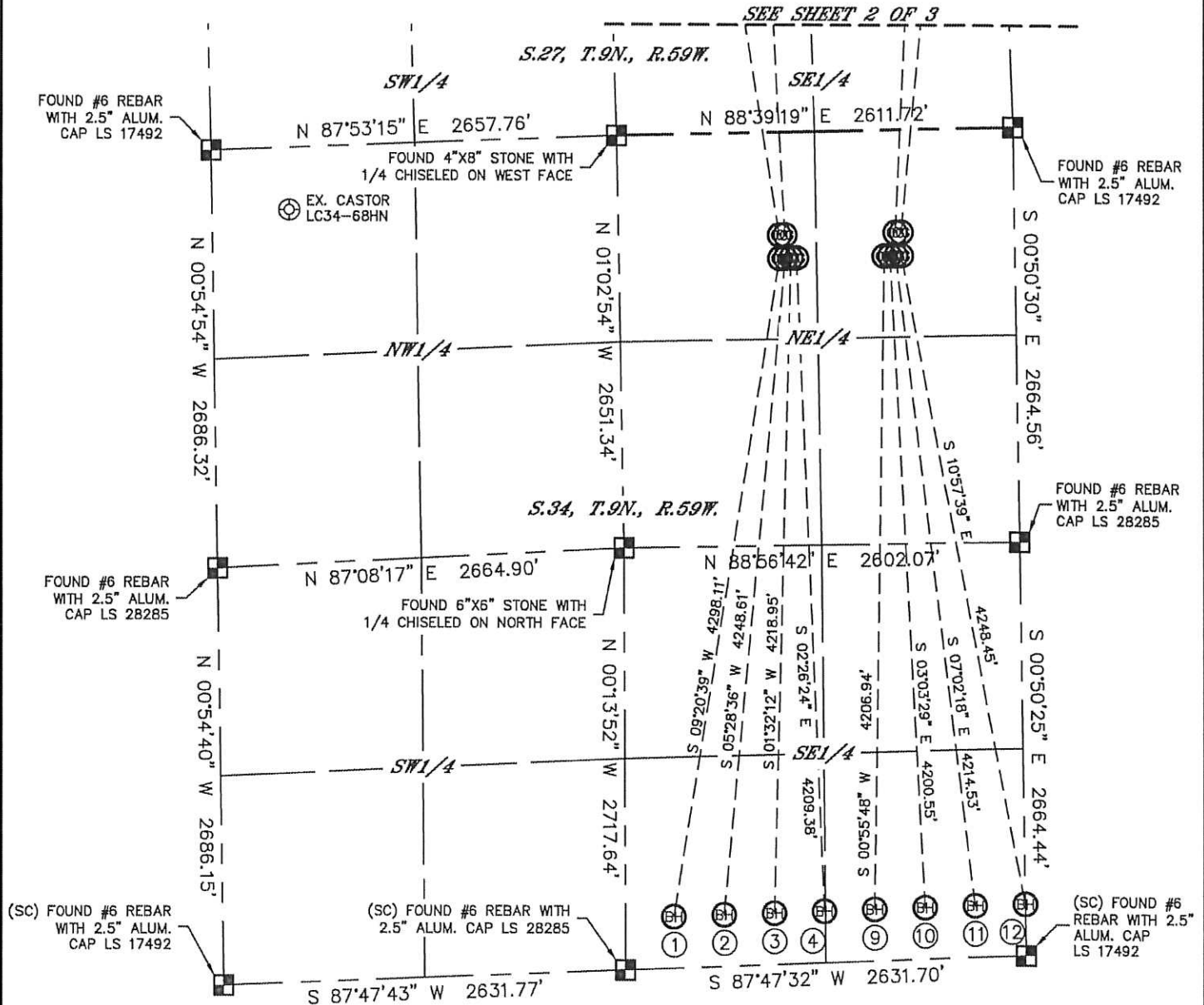
Lat40°, Inc. 1635 Foxtrail Drive, Suite 325 Loveland, CO 970-776-3321

MULTI-WELL PLAN

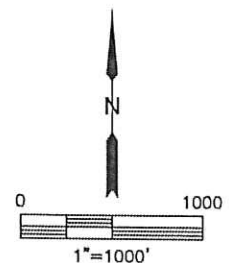
REMORA LC34-745 PAD

SECTION: 34
TOWNSHIP: 9N
RANGE: 59W

THIS MAP DOES NOT REPRESENT A BOUNDARY SURVEY



#	WELL NAME	BHL FOOTAGE		BHL LAT °	BHL LONG °	1/4/1/4
1	REMORA LC34-745	330	FSL	2310	FEL	40.70045 -103.96262 SWSE
2	REMORA LC34-740	330	FSL	1980	FEL	40.70047 -103.96143 SWSE
3	REMORA LC34-735	330	FSL	1650	FEL	40.70049 -103.96024 SWSE
4	REMORA LC34-730	330	FSL	1320	FEL	40.70050 -103.95905 SWSE
9	REMORA LC34-725	330	FSL	990	FEL	40.70052 -103.95786 SESE
10	REMORA LC34-720	330	FSL	660	FEL	40.70054 -103.95667 SESE
11	REMORA LC34-715	330	FSL	330	FEL	40.70056 -103.95548 SESE
12	REMORA LC34-711	330	FSL	1	FEL	40.70058 -103.95429 SESE



SHEET 1 OF 3

DATE: 10/14/2014
PROJECT#: 2013186



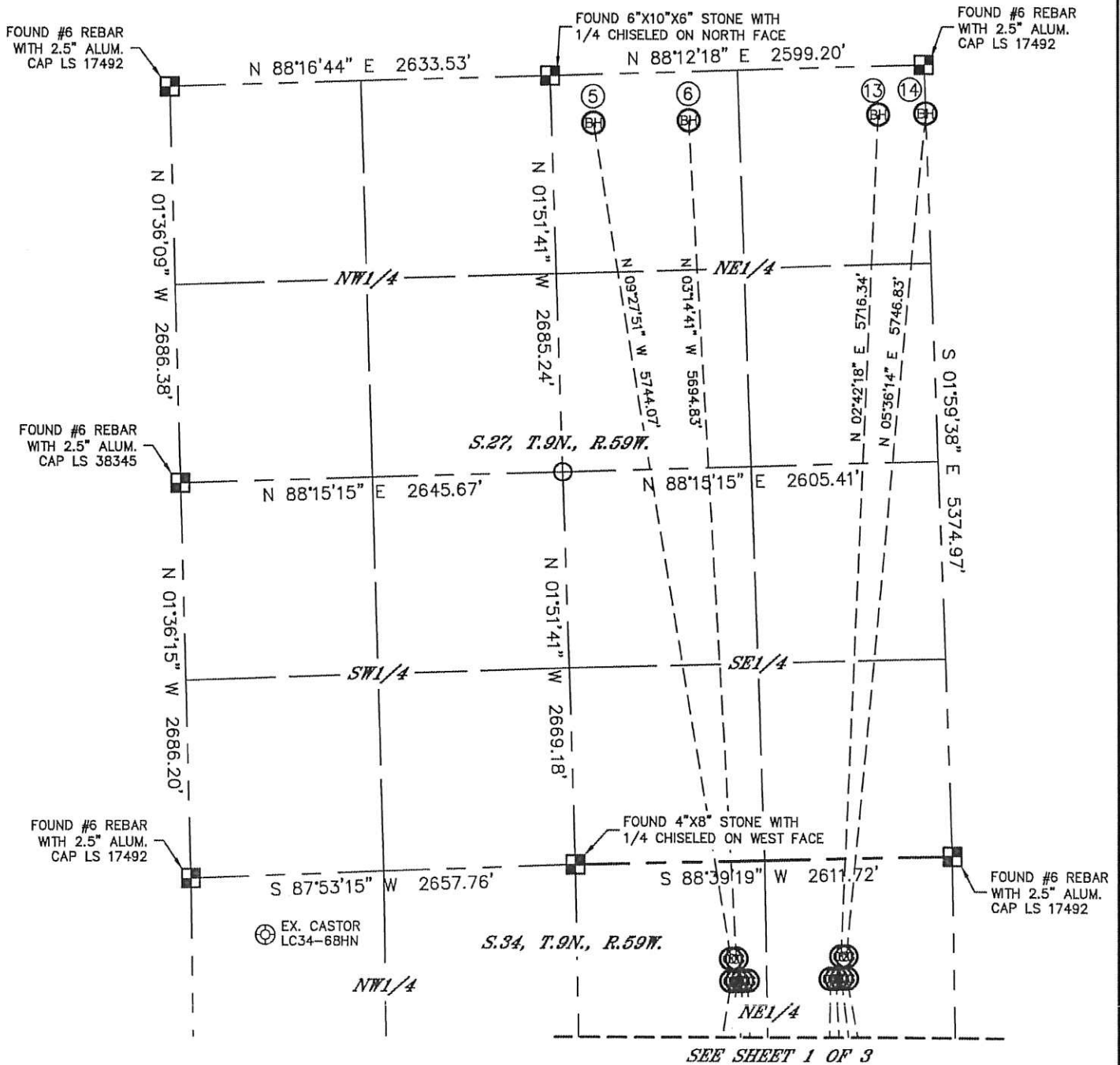
Lat40°, Inc. 1635 Foxtrail Drive, Suite 325 Loveland, CO 970-776-3321

MULTI-WELL PLAN

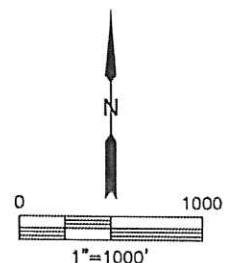
REMORA LC34-745 PAD

THIS MAP DOES NOT REPRESENT A BOUNDARY SURVEY

SECTION: 34
TOWNSHIP: 9N
RANGE: 59W



#	WELL NAME	BHL FOOTAGE		BHL LAT °	BHL LONG °	1/4/1/4
5	HALEY LC27-745	330 FNL	2310 FEL	40.72805	-103.96288	NWNE
6	HALEY LC27-735	330 FNL	1650 FEL	40.72808	-103.96050	NWNE
13	HALEY LC27-715	330 FNL	330 FEL	40.72813	-103.95574	NENE
14	HALEY LC27-711	330 FNL	1 FEL	40.72814	-103.95456	NENE



SHEET 2 OF 3

DATE: 1/7/2015
PROJECT#: 2013186

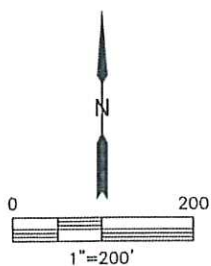
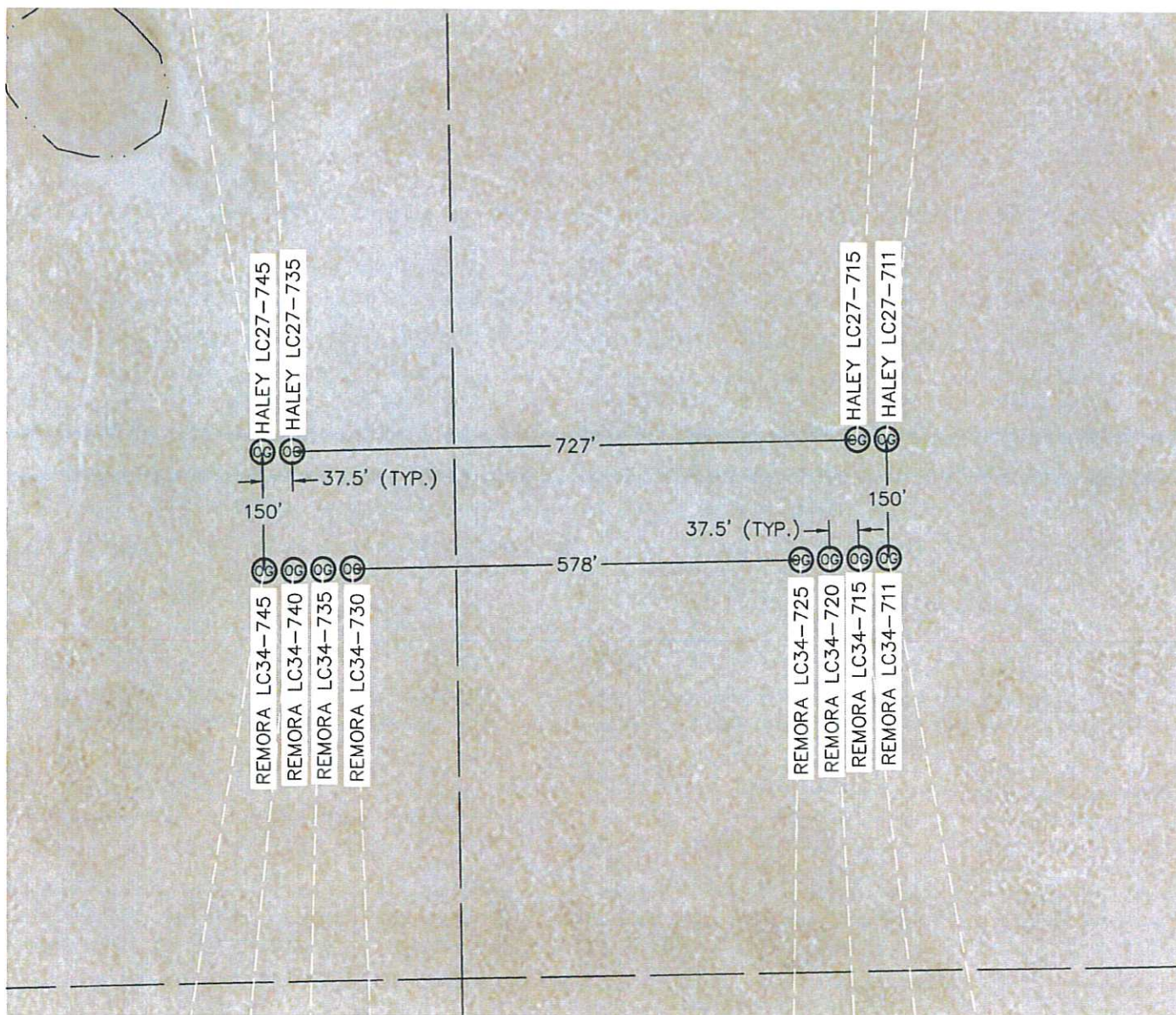


Lat40°, Inc. 1635 Foxtrail Drive, Suite 325 Loveland, CO 970-776-3321

MULTI-WELL PLAN

REMORA LC34-745 PAD

SECTION: 34
TOWNSHIP: 9N
RANGE: 59W



SHEET 3 OF 3

DATE: 1/7/2015
PROJECT#: 2013186