



Lat40°, Inc. 1635 Foxtrail Drive, Suite 325 Loveland, CO 970-776-3321

WELL LOCATION CERTIFICATE

SECTION: 34
TOWNSHIP: 9N
RANGE: 59W

THIS MAP DOES NOT REPRESENT A BOUNDARY SURVEY

S.27, T.9N., R.59W.

SW1/4

SE1/4

FOUND #6 REBAR WITH 2.5" ALUM. CAP LS 17492

N 87°53'15" E 2657.76'

N 88°39'19" E 2611.72'

FOUND 4"x8" STONE WITH 1/4 CHISELED ON WEST FACE

N 03°14'41" W 5694.83'

660'

FOUND #6 REBAR WITH 2.5" ALUM. CAP LS 17492

EX. CASTOR LC34-68HN

HALEY LC27-735

N 00°54'54" W 2686.32'

N 01°02'54" W 2651.34'

S 00°50'30" E 2664.56'

NW1/4

NE1/4

S.34, T.9N., R.59W.

FOUND #6 REBAR WITH 2.5" ALUM. CAP LS 28285

N 87°08'17" E 2664.90'

N 88°56'42" E 2602.07'

FOUND 6"x6" STONE WITH 1/4 CHISELED ON NORTH FACE

N 00°13'52" W 2717.64'

FOUND #6 REBAR WITH 2.5" ALUM. CAP LS 28285

N 00°54'40" W 2686.15'

SW1/4

SE1/4

S 00°50'25" E 2664.44'

(SC) FOUND #6 REBAR WITH 2.5" ALUM. CAP LS 17492

(SC) FOUND #6 REBAR WITH 2.5" ALUM. CAP LS 28285

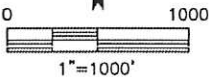
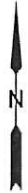
(SC) FOUND #6 REBAR WITH 2.5" ALUM. CAP LS 17492

S 87°47'43" W 2631.77'

S 87°47'32" W 2631.70'

In accordance with a request from Brian James with Noble Energy Inc., Lat40°, Inc. has determined the surface location of the HALEY LC27-735 to be 660' from the NORTH line and 1512' from the EAST line as measured at right angles from the section lines of Section 34, Township 9 North, Range 59 West and the bottom hole to be 330' from the NORTH line and 1650' from the EAST line as measured at right angles from the section lines of Section 27, Township 9 North, Range 59 West of the Sixth Principal Meridian, County of Weld, State of Colorado.

I hereby state that this Well Location Certificate was prepared by me, or under my direct supervision, that the fieldwork was completed on 2/13/2014, for and on behalf of Noble Energy Inc. That this is not a Land Survey Plat or an Improvement Survey Plat, and that it is not to be relied upon for establishment of fence, building, or other future improvement lines.



NOTE:

- Bearings shown are Grid Bearings of the Colorado State Plane Coordinate System, North Zone, North American Datum 1983/2007. The lineal dimensions as contained herein are based upon the "U.S. Survey Foot."
- Ground elevations are based on an observed GPS elevation (NAVD 1988 DATUM).
- IMPROVEMENTS: See LOCATION DRAWING for all visible improvements within 500' of disturbed area.
- SURFACE USE: RANGELAND
- INSTRUMENT OPERATOR: BRIAN ROTTINGHAUS
- NEAREST EXISTING WELL: CASTOR LC34-68HN, 3261' NW
NEAREST CULTURAL ITEMS:
BUILDING: 5280'+
BUILDING UNIT: 5280'+
HIGH OCCUPANCY BUILDING UNIT: 5280'+
DESIGNATED OUTSIDE ACTIVITY AREA: 5280'+
PUBLIC ROAD: 5280'+
ABOVEGROUND UTILITY: 703' N
RAILROAD: 5280'+
PROPERTY LINE: 660' N

SURFACE LOCATION

LAT: 40.71246°N
LONG: 103.95970°W
PDOP: 2.4
ELEV: 4816'
1/4,1/4: NW1/4NE1/4

BOTTOM HOLE

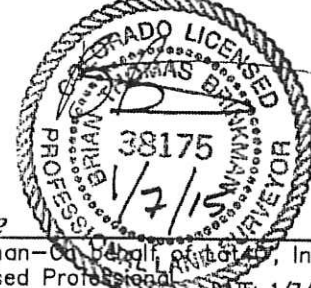
LAT: 40.72808°N
LONG: 103.96050°W

LEGEND

- = ALIQUOT MONUMENT AS DESCRIBED
- = CALCULATED POSITION

SHEET 1 OF 2

Brian T. Brinkman - Colorado Licensed Professional Land Surveyor No. 38175



DATE: 1/7/2015
PROJECT#: 2013186

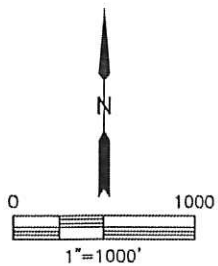
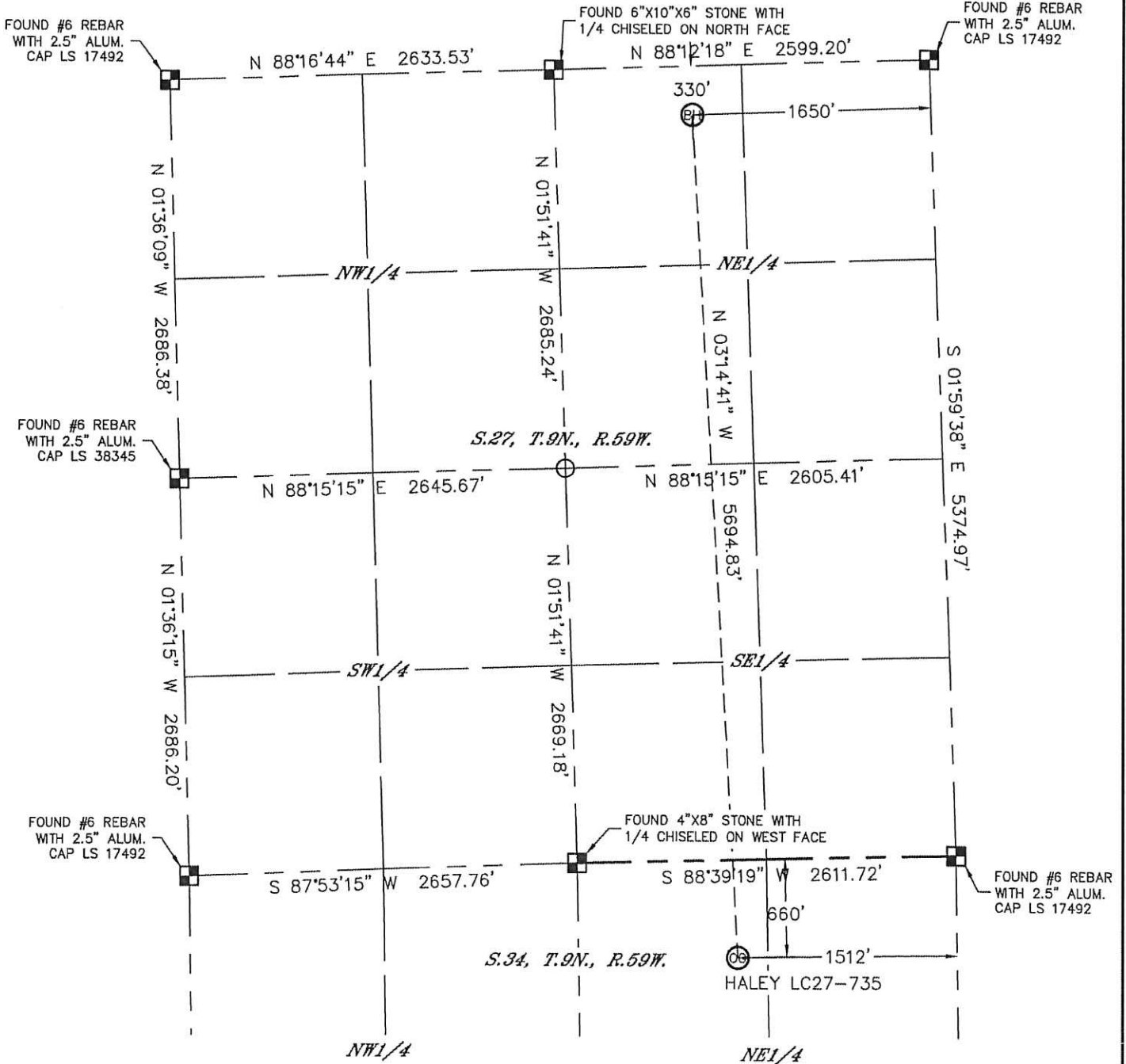


Lat40°, Inc. 1635 Foxtrail Drive, Suite 325 Loveland, CO 970-776-3321

WELL LOCATION CERTIFICATE

THIS MAP DOES NOT REPRESENT A BOUNDARY SURVEY

SECTION: 34
TOWNSHIP: 9N
RANGE: 59W



LEGEND

- = ALIQUOT MONUMENT AS DESCRIBED
- = CALCULATED POSITION

SHEET 2 OF 2

Brian T. Brinkman—On Behalf of Lat40°, Inc.
 Colorado Licensed Professional Land Surveyor No. 38175
 DATE: 1/7/2015
 PROJECT#: 2013186

