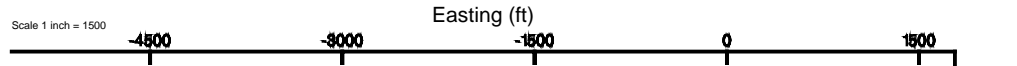


EXTRACTION OIL & GAS

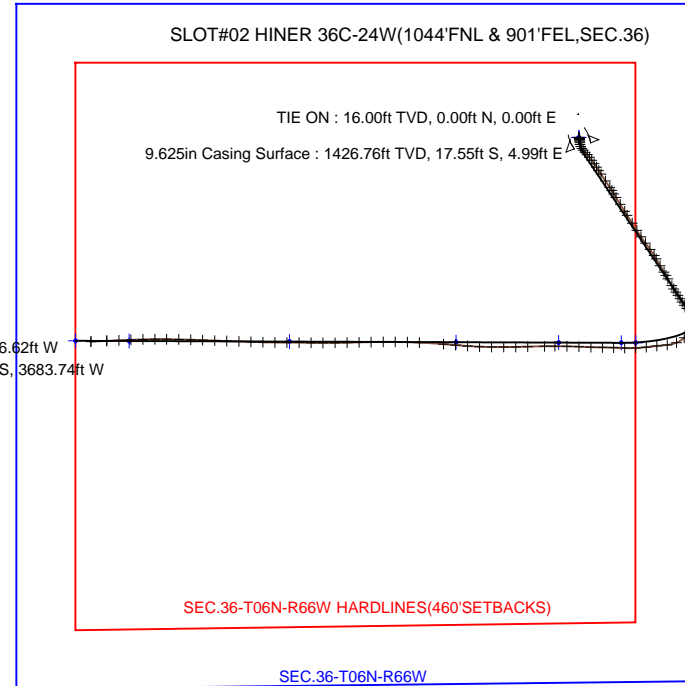
Location: COLORADO Slot: SLOT#02 HINER 36C-24W(1044'FNL & 901'FEL,SEC.36)
 Field: WELD COUNTY (NAD83/TRUE NORTH) Well: HINER 36C-24W
 Facility: SEC.36-T06N-R66W Wellbore: HINER 36C-24W PWB



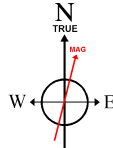
Plot reference wellpath is HINER 36C-24W (REV-8.0) PWP	
True vertical depths are referenced to XTREME 7 (RKB)	Grid System: NAD83 / Lambert Colorado SP, Northern Zone (501), US feet
Measured depths are referenced to XTREME 7 (RKB)	North Reference: True north
XTREME 7 (RKB) to Mean Sea Level: 4677 feet	Scale: True distance
Mean Sea Level to Mud line (At Slot: SLOT#02 HINER 36C-24W(1044'FNL & 901'FEL,SEC.36)): 0 feet	Depths are in feet
Coordinates are in feet referenced to Slot	Created by: painsetr on 9/3/2014



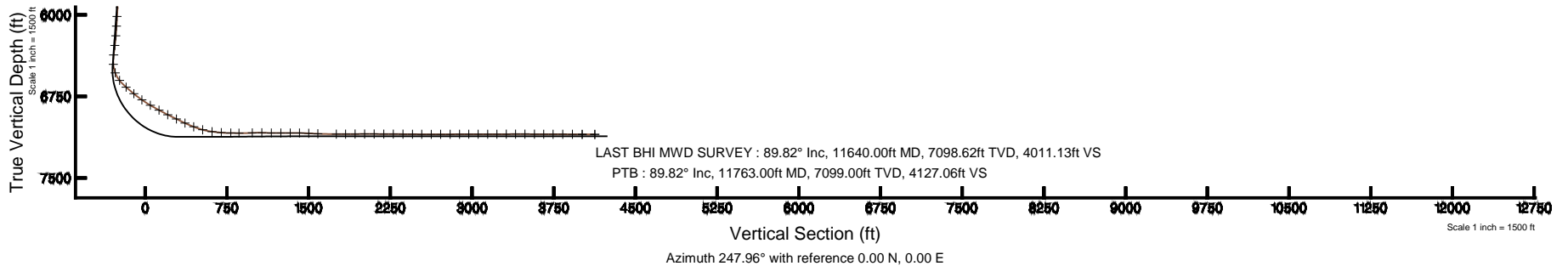
Northing (ft)



PTB : 7099.00ft TVD, 1595.23ft S, 3806.62ft W
 LAST BHI MWD SURVEY : 7098.62ft TVD, 1589.83ft S, 3683.74ft W



BGGM (1945.0 to 2016.0) Dip: 66.98° Field: 52770.1 nT
 Magnetic North is 8.51 degrees East of True North (at 8/8/2014)
 To correct azimuth from Magnetic to True add 8.51 degrees





Actual Wellpath Report

HINER 36C-24W AWP

Page 1 of 7



REFERENCE WELLPATH IDENTIFICATION

Operator	EXTRACTION OIL & GAS	Slot	SLOT#02 HINER 36C-24W(1044'FNL & 901'FEL,SEC.36)
Area	COLORADO	Well	HINER 36C-24W
Field	WELD COUNTY (NAD83/TRUE NORTH)	Wellbore	HINER 36-C-24W AWB
Facility	SEC.36-T06N-R66W		

REPORT SETUP INFORMATION

Projection System	NAD83 / Lambert Colorado SP, Northern Zone (501), US feet	Software System	WellArchitect® 4.0.0
North Reference	True	User	Painsetr
Scale	0.999963	Report Generated	9/3/2014 at 12:34:58 PM
Convergence at slot	n/a	Database/Source file	WA_Denver/HINER_36-C-24W_AWB.xml

WELLPATH LOCATION

	Local coordinates		Grid coordinates		Geographic coordinates	
	North[ft]	East[ft]	Easting[US ft]	Northing[US ft]	Latitude	Longitude
Slot Location	-181.75	4.17	3217332.74	1407421.24	40°26'56.926"N	104°43'08.702"W
Facility Reference Pt			3217326.97	1407602.94	40°26'58.722"N	104°43'08.756"W
Field Reference Pt			3185481.27	1419166.81	40°28'55.560"N	104°49'59.556"W

WELLPATH DATUM

Calculation method	Minimum curvature	XTREME 7 (RKB) to Facility Vertical Datum	4677.00ft
Horizontal Reference Pt	Slot	XTREME 7 (RKB) to Mean Sea Level	4677.00ft
Vertical Reference Pt	XTREME 7 (RKB)	XTREME 7 (RKB) to Mud Line at Slot (SLOT#02 HINER 36C-24W(1044'FNL & 901'FEL,SEC.36))	4677.00ft
MD Reference Pt	XTREME 7 (RKB)	Section Origin	N 0.00, E 0.00 ft
Field Vertical Reference	Mean Sea Level	Section Azimuth	247.96°



Actual Wellpath Report

HINER 36C-24W AWP

Page 2 of 7



REFERENCE WELLPATH IDENTIFICATION

Operator	EXTRACTION OIL & GAS	Slot	SLOT#02 HINER 36C-24W(1044'FNL & 901'FEL,SEC.36)
Area	COLORADO	Well	HINER 36C-24W
Field	WELD COUNTY (NAD83/TRUE NORTH)	Wellbore	HINER 36-C-24W AWB
Facility	SEC.36-T06N-R66W		

WELLPATH DATA (106 stations) † = interpolated/extrapolated station

MD [ft]	Inclination [°]	Azimuth [°]	TVD [ft]	Vert Sect [ft]	North [ft]	East [ft]	DLS [°/100ft]	Comments
0.00†	0.000	169.640	0.00	0.00	0.00	0.00	0.00	
16.00	0.000	169.640	16.00	0.00	0.00	0.00	0.00	TIE ON
196.00	0.370	169.640	196.00	0.12	-0.57	0.10	0.21	
393.00	0.310	160.480	393.00	0.27	-1.70	0.40	0.04	
852.00	0.750	132.730	851.98	-0.96	-4.91	3.02	0.11	
944.00	0.640	164.290	943.97	-1.16	-5.81	3.60	0.43	
1128.00	1.020	166.980	1127.95	-0.79	-8.40	4.25	0.21	
1157.00	0.930	168.600	1156.94	-0.70	-8.88	4.35	0.32	
1279.00	1.280	167.450	1278.92	-0.30	-11.18	4.84	0.29	
1371.00	2.430	183.200	1370.87	0.71	-14.13	4.96	1.36	
1463.00	5.990	175.930	1462.61	3.02	-20.87	5.19	3.91	
1556.00	5.330	170.580	1555.16	5.46	-29.97	6.24	0.91	
1654.00	7.500	174.400	1652.54	8.26	-40.83	7.61	2.26	
1745.00	10.420	173.810	1742.42	12.19	-54.92	9.08	3.21	
1842.00	10.220	151.950	1837.89	13.69	-71.24	14.07	4.02	
1936.00	9.950	145.760	1930.44	11.10	-85.32	22.56	1.19	
2030.00	12.330	139.720	2022.66	6.24	-99.69	33.62	2.82	
2124.00	14.440	136.050	2114.10	-1.28	-115.79	48.25	2.42	
2218.00	15.700	138.350	2204.87	-9.92	-133.73	64.84	1.48	
2312.00	17.920	141.390	2294.85	-18.32	-154.53	82.31	2.54	
2406.00	19.380	144.630	2383.91	-26.04	-178.55	100.37	1.90	
2500.00	20.520	144.170	2472.27	-33.57	-204.63	119.04	1.22	
2595.00	19.940	148.250	2561.42	-40.27	-231.91	137.31	1.61	
2689.00	20.230	146.520	2649.70	-46.20	-259.09	154.71	0.70	
2783.00	20.320	145.760	2737.88	-52.87	-286.14	172.86	0.30	
2971.00	19.430	148.840	2914.68	-64.73	-339.89	207.41	0.73	
3159.00	17.460	142.870	3093.03	-77.04	-389.14	240.62	1.45	
3253.00	18.990	149.630	3182.32	-82.93	-413.58	256.87	2.77	
3347.00	19.640	149.810	3271.03	-87.39	-440.43	272.54	0.69	
3442.00	20.960	148.830	3360.13	-92.35	-468.77	289.37	1.43	



Actual Wellpath Report

HINER 36C-24W AWP

Page 3 of 7



REFERENCE WELLPATH IDENTIFICATION

Operator	EXTRACTION OIL & GAS	Slot	SLOT#02 HINER 36C-24W(1044'FNL & 901'FEL,SEC.36)
Area	COLORADO	Well	HINER 36C-24W
Field	WELD COUNTY (NAD83/TRUE NORTH)	Wellbore	HINER 36-C-24W AWB
Facility	SEC.36-T06N-R66W		

WELLPATH DATA (106 stations)

MD [ft]	Inclination [°]	Azimuth [°]	TVD [ft]	Vert Sect [ft]	North [ft]	East [ft]	DLS [°/100ft]	Comments
3629.00	18.390	147.570	3536.20	-102.98	-522.30	322.50	1.39	
3818.00	21.940	148.250	3713.58	-114.32	-577.50	357.08	1.88	
3912.00	22.900	148.150	3800.48	-120.40	-607.97	375.97	1.02	
4100.00	23.030	145.810	3973.58	-134.38	-669.46	415.94	0.49	
4288.00	18.580	149.040	4149.28	-146.77	-725.59	452.03	2.44	
4477.00	18.320	146.310	4328.57	-157.44	-776.13	484.00	0.48	
4664.00	19.870	142.670	4505.28	-171.76	-825.86	519.58	1.04	
4852.00	17.840	145.830	4683.19	-186.24	-875.10	555.13	1.21	
5039.00	17.790	145.480	4861.22	-198.44	-922.33	587.41	0.06	
5134.00	19.960	151.570	4951.12	-203.38	-948.56	603.36	3.08	
5321.00	18.560	149.310	5127.65	-211.42	-1002.22	633.74	0.85	
5509.00	18.130	149.250	5306.10	-220.35	-1053.09	663.97	0.23	
5603.00	17.990	148.400	5395.47	-224.98	-1078.02	679.05	0.32	
5697.00	19.960	151.590	5484.36	-229.17	-1104.50	694.30	2.37	
5885.00	18.170	148.450	5662.04	-237.58	-1157.71	724.90	1.10	
5978.00	19.260	150.540	5750.12	-241.96	-1183.42	740.03	1.38	
6070.00	19.130	145.050	5837.02	-247.29	-1208.99	756.13	1.97	
6164.00	18.340	147.190	5926.04	-253.49	-1234.05	772.97	1.11	
6258.00	19.610	149.390	6014.93	-258.61	-1260.05	789.02	1.55	
6352.00	18.900	148.000	6103.67	-263.60	-1286.54	805.12	0.90	
6446.00	18.540	144.180	6192.70	-269.79	-1311.57	821.93	1.36	
6540.00	20.990	139.920	6281.16	-278.57	-1336.57	841.52	3.02	
6634.00	22.590	139.570	6368.44	-289.48	-1363.20	864.07	1.71	
6729.00	28.590	165.230	6454.34	-292.37	-1399.21	881.77	13.13	
6823.00	38.450	186.440	6532.88	-275.50	-1450.30	884.24	16.16	
6917.00	46.520	207.520	6602.50	-235.33	-1509.99	865.07	17.32	
7011.00	50.760	227.410	6664.95	-174.93	-1565.21	822.26	16.46	
7105.00	50.310	247.700	6725.07	-104.24	-1603.80	761.62	16.64	
7199.00	56.230	264.390	6781.52	-30.19	-1621.44	688.88	15.53	
7294.00	60.690	264.180	6831.20	47.49	-1629.51	608.34	4.70	



Actual Wellpath Report

HINER 36C-24W AWP

Page 4 of 7



REFERENCE WELLPATH IDENTIFICATION

Operator	EXTRACTION OIL & GAS	Slot	SLOT#02 HINER 36C-24W(1044'FNL & 901'FEL,SEC.36)
Area	COLORADO	Well	HINER 36C-24W
Field	WELD COUNTY (NAD83/TRUE NORTH)	Wellbore	HINER 36-C-24W AWB
Facility	SEC.36-T06N-R66W		

WELLPATH DATA (106 stations)

MD [ft]	Inclination [°]	Azimuth [°]	TVD [ft]	Vert Sect [ft]	North [ft]	East [ft]	DLS [°/100ft]	Comments
7388.00	62.250	263.280	6876.10	126.97	-1638.53	526.25	1.86	
7482.00	64.590	267.360	6918.17	207.16	-1645.36	442.49	4.61	
7576.00	66.180	272.110	6957.34	286.49	-1645.73	357.07	4.90	
7670.00	66.730	272.090	6994.89	365.13	-1642.57	270.96	0.59	
7764.00	70.360	270.280	7029.27	445.51	-1640.78	183.51	4.26	
7858.00	75.900	272.030	7056.54	528.16	-1638.95	93.61	6.16	
7953.00	83.090	272.400	7073.85	613.26	-1635.34	0.33	7.58	
8047.00	85.780	271.300	7082.96	698.80	-1632.32	-93.17	3.09	
8141.00	89.780	269.890	7086.60	785.48	-1631.34	-187.07	4.51	
8222.00	89.320	269.340	7087.24	860.76	-1631.89	-268.06	0.89	
8353.00	92.430	268.250	7085.24	983.16	-1634.64	-399.00	2.52	
8447.00	88.800	268.680	7084.23	1071.19	-1637.16	-492.95	3.89	
8541.00	88.800	270.570	7086.20	1158.53	-1637.77	-586.92	2.01	
8635.00	90.650	269.980	7086.65	1245.49	-1637.32	-680.91	2.07	
8729.00	90.030	272.750	7086.09	1331.74	-1635.08	-774.87	3.02	
8823.00	89.480	273.880	7086.49	1416.69	-1629.65	-868.71	1.34	
8917.00	86.950	274.700	7089.42	1500.89	-1622.62	-962.40	2.83	
9011.00	88.270	274.490	7093.34	1584.84	-1615.10	-1056.01	1.42	
9199.00	89.660	272.610	7096.74	1754.37	-1603.46	-1243.61	1.24	
9293.00	90.490	271.740	7096.61	1840.10	-1599.89	-1337.54	1.28	
9388.00	90.370	270.550	7095.90	1927.42	-1598.00	-1432.51	1.26	
9482.00	90.310	269.500	7095.34	2014.54	-1597.95	-1526.51	1.12	
9576.00	89.570	268.800	7095.44	2102.18	-1599.35	-1620.50	1.08	
9670.00	89.750	268.610	7096.00	2190.09	-1601.47	-1714.47	0.28	
9764.00	89.690	268.790	7096.46	2278.00	-1603.61	-1808.45	0.20	
9858.00	89.690	269.220	7096.97	2365.73	-1605.24	-1902.43	0.46	
9952.00	89.480	270.080	7097.65	2453.07	-1605.81	-1996.43	0.94	
10045.00	89.570	271.160	7098.42	2538.89	-1604.81	-2089.42	1.17	
10139.00	90.150	270.630	7098.65	2625.46	-1603.34	-2183.41	0.84	
10233.00	90.190	270.150	7098.37	2712.35	-1602.70	-2277.40	0.51	



Actual Wellpath Report

HINER 36C-24W AWP

Page 5 of 7



REFERENCE WELLPATH IDENTIFICATION

Operator	EXTRACTION OIL & GAS	Slot	SLOT#02 HINER 36C-24W(1044'FNL & 901'FEL,SEC.36)
Area	COLORADO	Well	HINER 36C-24W
Field	WELD COUNTY (NAD83/TRUE NORTH)	Wellbore	HINER 36-C-24W AWB
Facility	SEC.36-T06N-R66W		

WELLPATH DATA (106 stations)

MD [ft]	Inclination [°]	Azimuth [°]	TVD [ft]	Vert Sect [ft]	North [ft]	East [ft]	DLS [°/100ft]	Comments
10327.00	90.090	270.580	7098.14	2799.26	-1602.10	-2371.40	0.47	
10421.00	90.150	271.510	7097.94	2885.73	-1600.38	-2465.38	0.99	
10514.00	90.090	272.380	7097.75	2970.70	-1597.23	-2558.33	0.94	
10608.00	90.030	271.720	7097.65	3056.52	-1593.87	-2652.27	0.71	
10703.00	90.150	271.900	7097.50	3143.41	-1590.87	-2747.22	0.23	
10796.00	90.190	272.170	7097.22	3228.32	-1587.56	-2840.16	0.29	
10891.00	90.150	272.080	7096.94	3315.00	-1584.04	-2935.09	0.10	
10984.00	90.150	271.720	7096.70	3400.00	-1580.96	-3028.04	0.39	
11078.00	89.820	271.360	7096.72	3486.15	-1578.43	-3122.01	0.52	
11172.00	89.750	270.470	7097.08	3572.71	-1576.93	-3216.00	0.95	
11264.00	89.780	269.600	7097.45	3657.97	-1576.87	-3307.99	0.95	
11357.00	89.850	268.530	7097.75	3744.73	-1578.39	-3400.98	1.15	
11451.00	89.820	267.630	7098.02	3832.99	-1581.54	-3494.93	0.96	
11545.00	89.820	267.420	7098.32	3921.57	-1585.60	-3588.84	0.22	
11640.00	89.820	267.480	7098.62	4011.13	-1589.83	-3683.74	0.06	LAST BHI MWD SURVEY
11763.00	89.820	267.480	7099.00	4127.06	-1595.23	-3806.62	0.00	PTB

HOLE & CASING SECTIONS - Ref Wellbore: HINER 36-C-24W AWB Ref Wellpath: HINER 36C-24W AWP

String/Diameter	Start MD [ft]	End MD [ft]	Interval [ft]	Start TVD [ft]	End TVD [ft]	Start N/S [ft]	Start E/W [ft]	End N/S [ft]	End E/W [ft]
9.625in Casing Surface	16.00	1427.00	1411.00	16.00	1426.76	0.00	0.00	-17.55	4.99
8.75in Open Hole	1427.00	11763.00	10336.00	1426.76	7099.00	-17.55	4.99	-1595.23	-3806.62



Actual Wellpath Report

HINER 36C-24W AWP

Page 6 of 7



REFERENCE WELLPATH IDENTIFICATION

Operator	EXTRACTION OIL & GAS	Slot	SLOT#02 HINER 36C-24W(1044'FNL & 901'FEL,SEC.36)
Area	COLORADO	Well	HINER 36C-24W
Field	WELD COUNTY (NAD83/TRUE NORTH)	Wellbore	HINER 36-C-24W AWB
Facility	SEC.36-T06N-R66W		

TARGETS

Name	MD [ft]	TVD [ft]	North [ft]	East [ft]	Grid East [US ft]	Grid North [US ft]	Latitude	Longitude	Shape
SEC.36-T06N-R66W		0.00	0.00	0.00	3217332.74	1407421.24	40°26'56.926"N	104°43'08.702"W	polygon
SEC.36-T06N-R66W HARDLINES (460'SETBACKS)		7113.00	0.00	0.00	3217332.74	1407421.24	40°26'56.926"N	104°43'08.702"W	polygon
HINER 36C-24W BHL ON PLAT REV-1(2677'FNL & 460'FWL,SEC.36)		7116.00	-1589.21	-3926.26	3213420.79	1405797.58	40°26'41.219"N	104°43'59.484"W	point
HINER 36C-24W TARGET#2		7116.00	-1600.00	-958.00	3216388.91	1405812.93	40°26'41.115"N	104°43'21.093"W	point
HINER 36C-24W TARGET#3		7116.00	-1595.00	-2258.00	3215088.97	1405806.48	40°26'41.164"N	104°43'37.907"W	point
HINER 36C-24W TARGET#4		7116.00	-1591.00	-3508.00	3213839.03	1405799.47	40°26'41.202"N	104°43'54.074"W	point
HINER 36C-24W LANDING		7121.00	-1604.84	442.80	3217789.65	1405820.42	40°26'41.068"N	104°43'02.975"W	point
HINER 36C-24W LANDING REV-1		7121.00	-1604.84	331.00	3217677.85	1405819.44	40°26'41.068"N	104°43'04.421"W	point
HINER 36C-24W TARGET#1		7121.00	-1603.00	-158.00	3217188.87	1405816.98	40°26'41.086"N	104°43'10.746"W	point

WELLPATH COMPOSITION - Ref Wellbore: HINER 36-C-24W AWB Ref Wellpath: HINER 36C-24W AWP

Start MD [ft]	End MD [ft]	Positional Uncertainty Model	Log Name/Comment	Wellbore
16.00	1157.00	NaviTrak (MagCorr)	INTEQ/NAVITRAK (MAGCORR) MWD 13-1/2"<196-1157>	HINER 36-C-24W AWB
1157.00	6446.00	NaviTrak (MagCorr)	INTEQ/NAVITRAK (MAGCORR) MWD 8-3/4"<1279-6446>	HINER 36-C-24W AWB
6446.00	8141.00	NaviTrak (Standard)	INTEQ/NAVITRAK MWD 8-3/4"<6540-8141>	HINER 36-C-24W AWB
8141.00	11640.00	OnTrak (Standard)	INTEQ/ONTRAK MWD 8-3/4""<8222-11640>	HINER 36-C-24W AWB
11640.00	11763.00	Blind Drilling (std)	Projection to bit	HINER 36-C-24W AWB



Actual Wellpath Report

HINER 36C-24W AWP

Page 7 of 7



REFERENCE WELLPATH IDENTIFICATION

Operator	EXTRACTION OIL & GAS	Slot	SLOT#02 HINER 36C-24W(1044'FNL & 901'FEL,SEC.36)
Area	COLORADO	Well	HINER 36C-24W
Field	WELD COUNTY (NAD83/TRUE NORTH)	Wellbore	HINER 36-C-24W AWB
Facility	SEC.36-T06N-R66W		

WELLPATH COMMENTS

MD [ft]	Inclination [°]	Azimuth [°]	TVD [ft]	Comment
16.00	0.000	169.640	16.00	TIE ON
11640.00	89.820	267.480	7098.62	LAST BHI MWD SURVEY
11763.00	89.820	267.480	7099.00	PTB