

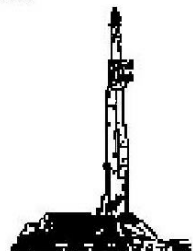
**GOOLSBY BROTHERS**  
and associates, inc.

575 Union Blvd, Suite 208  
Lakewood, CO 80228  
303-945-2860 Office



Geological Wellsite  
Supervision

[www.goolsbybrothers.com](http://www.goolsbybrothers.com)



Scale 1:240 (5"=100') Imperial  
Measured Depth Log

Well Name: Reigle 3N-4HZ

Location: Section 4, T2N, R65W, Weld County, CO.

License Number: API: 05-123-36137

Spud Date: 28 Nov. 2012

Surface Coordinates: 493 FSL X 2406 FEL SW SE

LAT: 40.161863 LONG: -104.667912

Bottom Hole Coordinates: 476 FNL X 1974' FWL (Est.)

Lat: N/A LONG: N/A

Ground Elevation (ft): 4858'

Logged Interval (ft): 6600'

To: 11054'

K.B. Elevation (ft): 4874'

Total Depth (ft): 11054'

Formation: Niobrara C

Type of Drilling Fluid: Polymer-Gel

Region: Wattenberg

Drilling Completed: 07 Dec. 2012

Printed by HORIZONTAL.LOG from WellSight Systems 1-800-447-1534 [www.WellSight.com](http://www.WellSight.com)

**OPERATOR**

Company: Kerr-McGee Oil & Gas Onshore LP

Address: Granite Tower - 1099 18th St, Ste 1800

Denver, CO 80202

CO Geologist, Tom Birmingham

**GEOLOGIST**

Name: Robin Brackman, Tekabe Gedamu

Company: Goolsby Brothers & Assoc. (GBA), Inc. ([www.goolsbybrothers.com](http://www.goolsbybrothers.com))

Address: 575 Union Blvd.

Suite 208,

Lakewood CO. 80228

## E-logs

MWD GR 6550' -11,016'

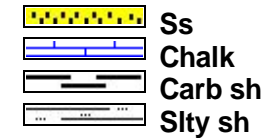
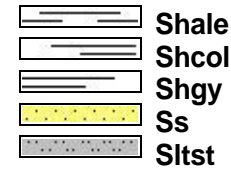
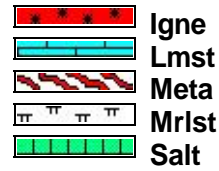
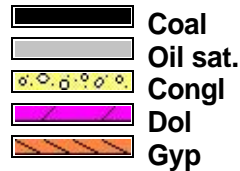
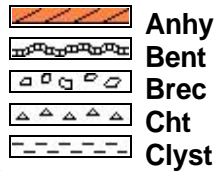
## Casing

9 5/8" Surface Casing set @ 856'  
7" Intermediate Casing set @ 7490'MD.  
run 4 1/2" Production Liner on Dec 09, 2012.

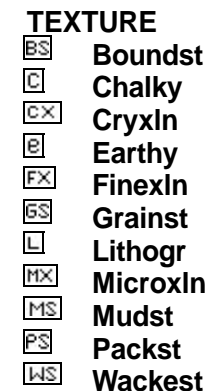
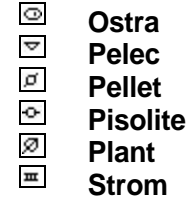
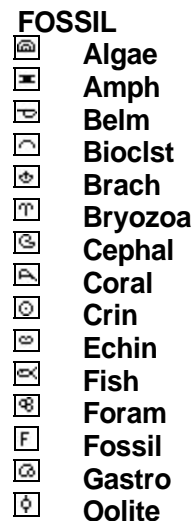
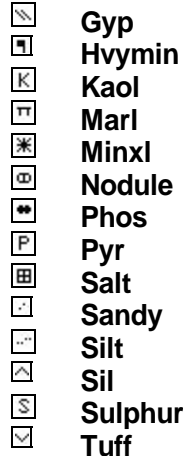
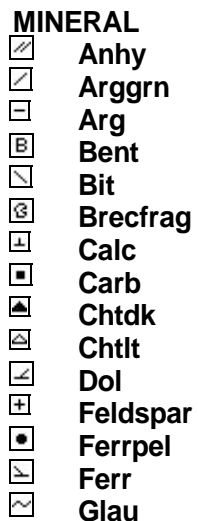
## Comments

- 1) Drilling Contractor: Xtreme Drilling, Rig # 23
- 2) Mud Company : Halliburton,
- 3) Directional Drilling: Weatherford Drilling Services  
MWD: Denny Palmer & John Jackson
- 4) Gas Equipment: Mudlogging Systems Inc.  
by Terra Services  
Redbox # ML-370 & Ratcliff Agitator

## ROCK TYPES



## ACCESSORIES



### OIL SHOWS

- Even
- Spotted
- Ques
- Dead
- Vspotty

near even

### POROSITY TYPE

- Earthy
- Fenest
- Fracture

### OTHER SYMBOLS

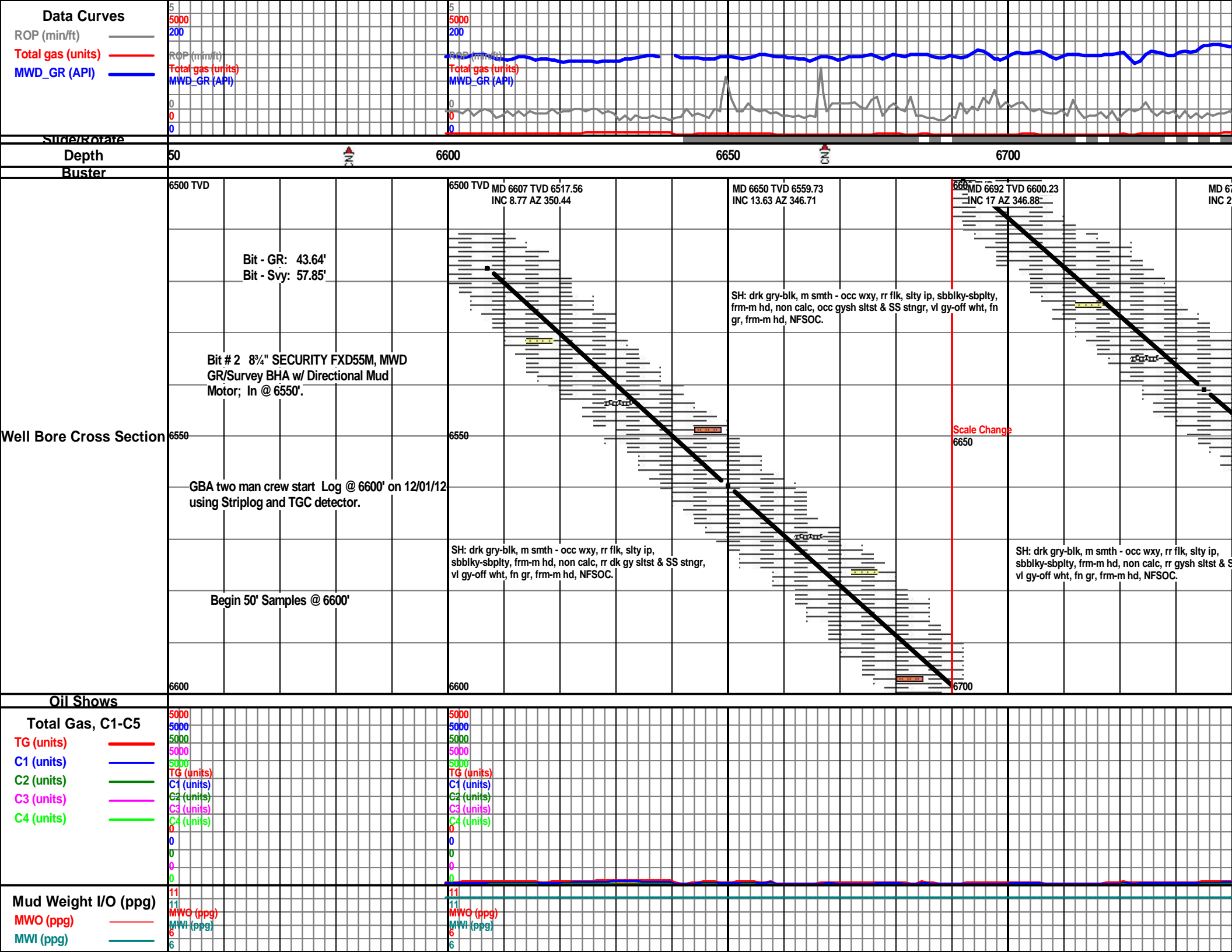
- Inter
- Moldic
- Organic
- Pinpoint
- Vuggy

### ROUNDING

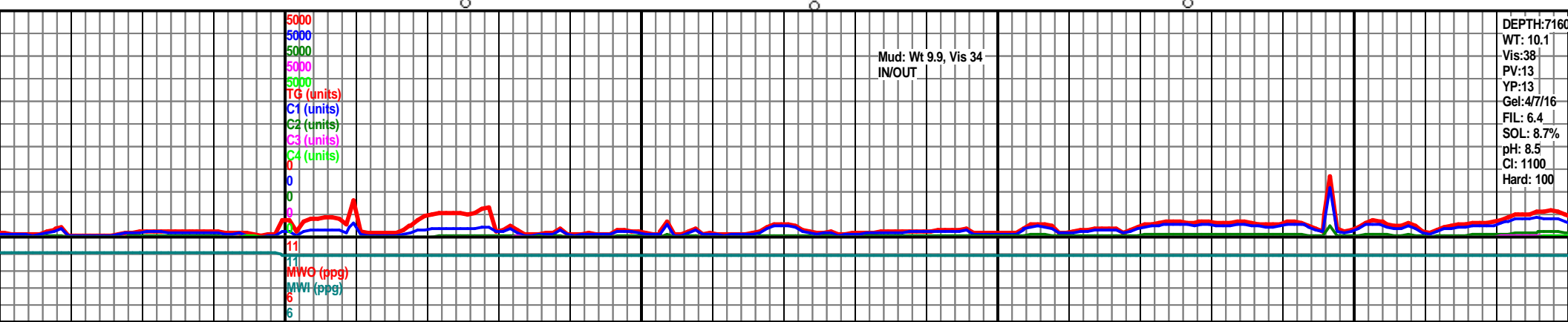
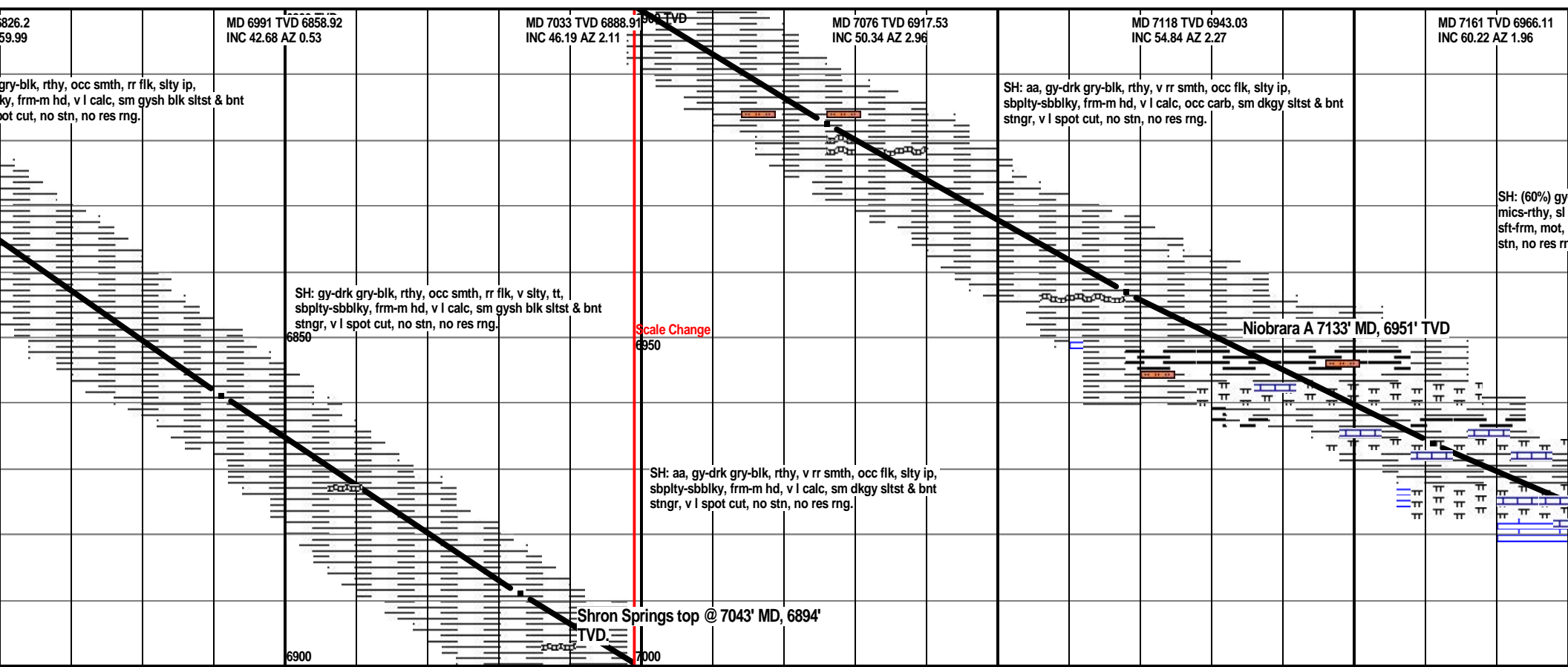
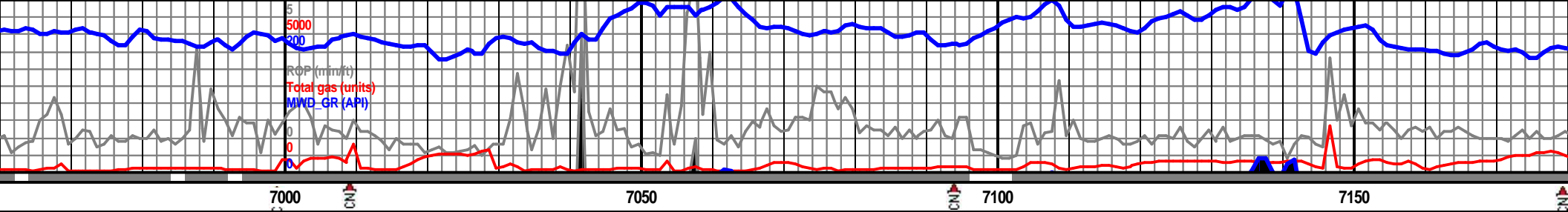
- Rounded
- Subrnd
- Subang
- Angular

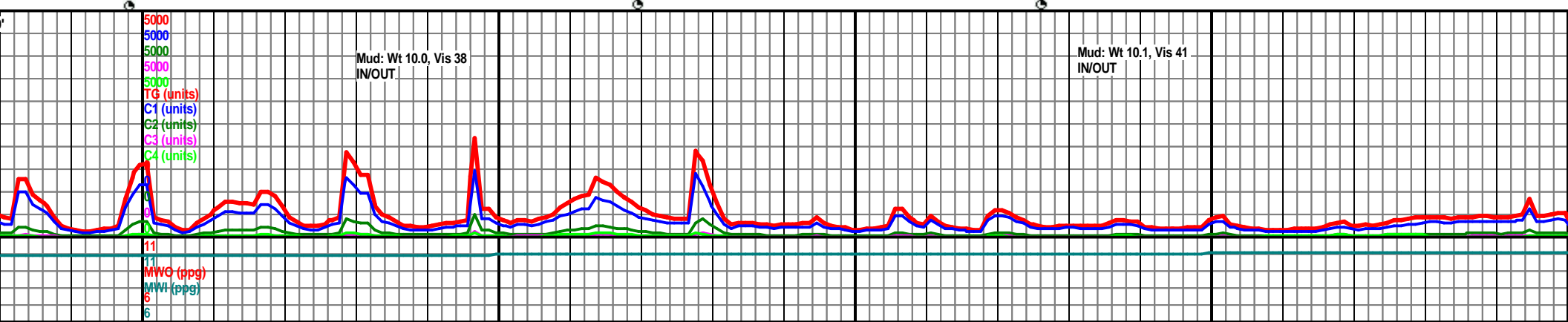
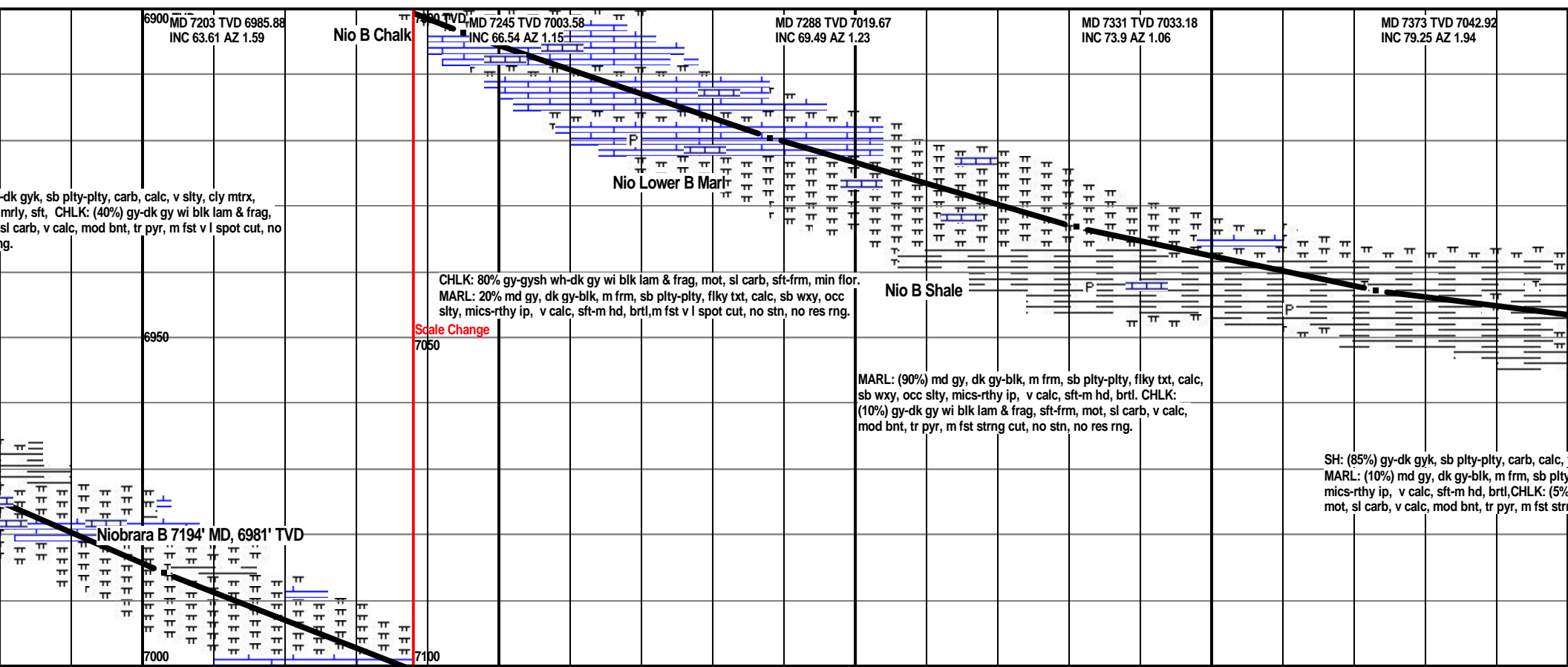
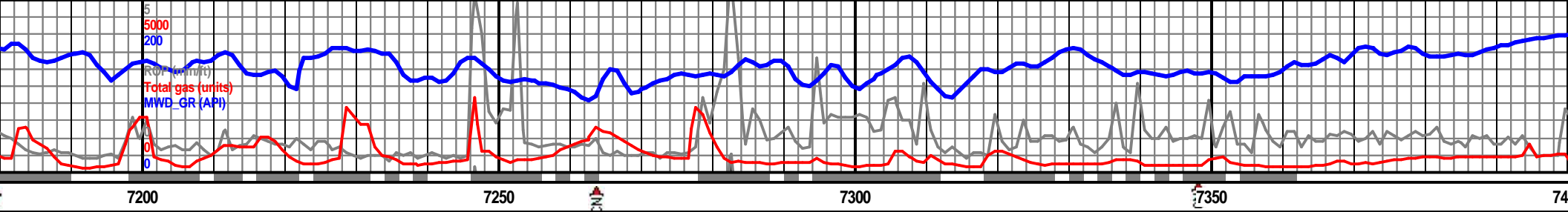
### SORTING

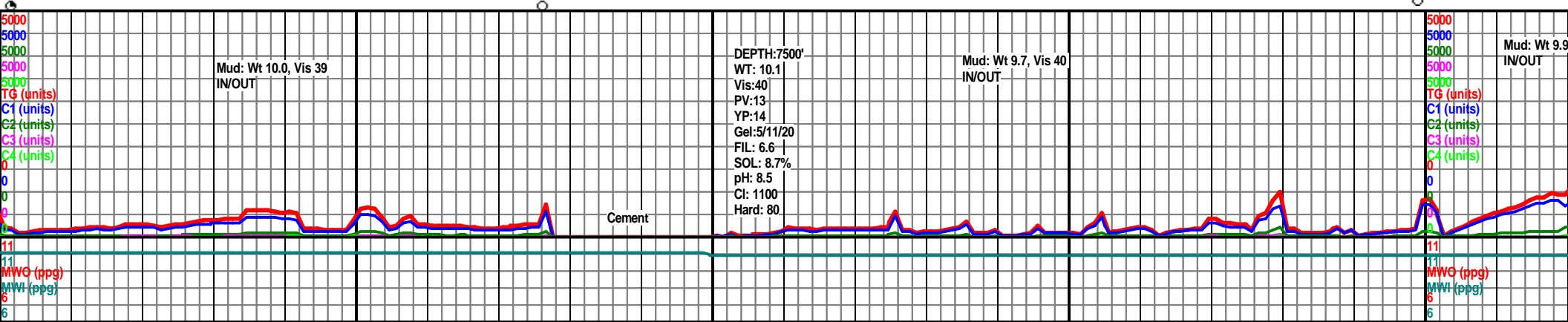
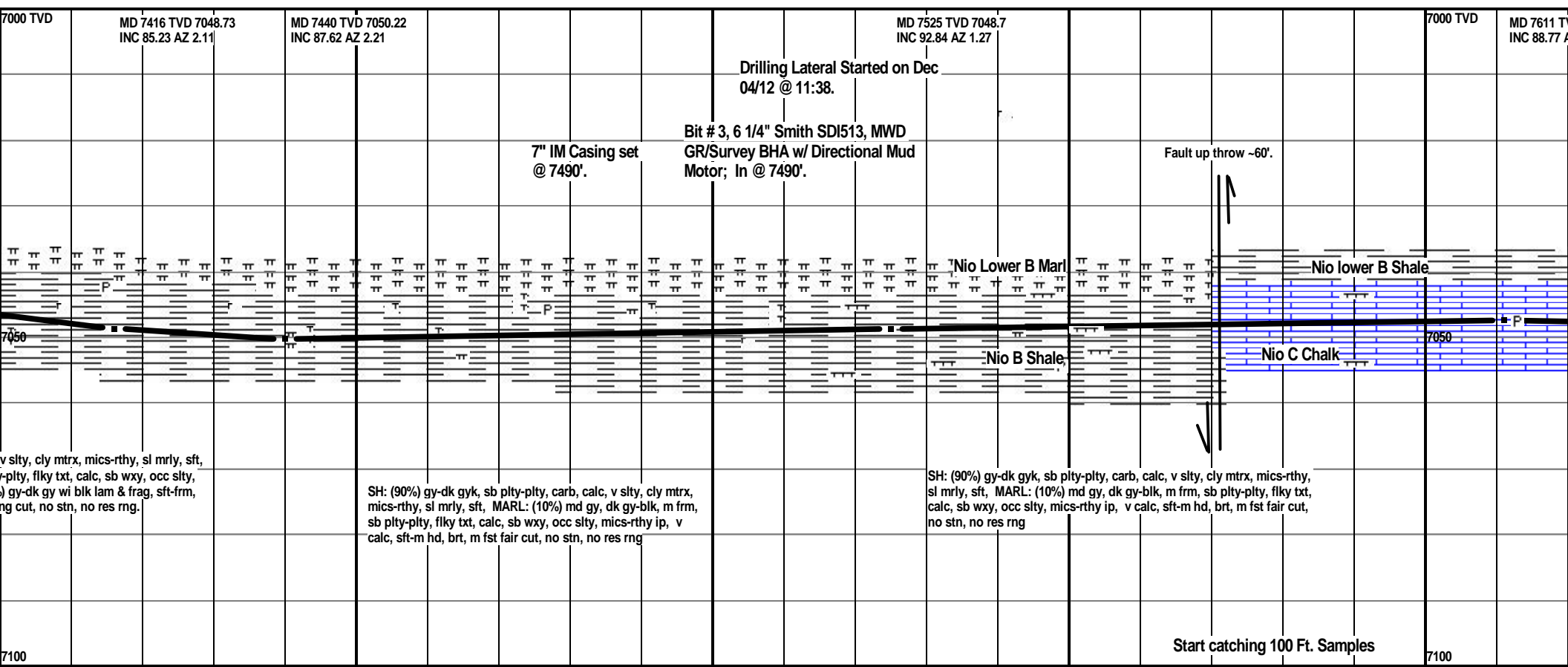
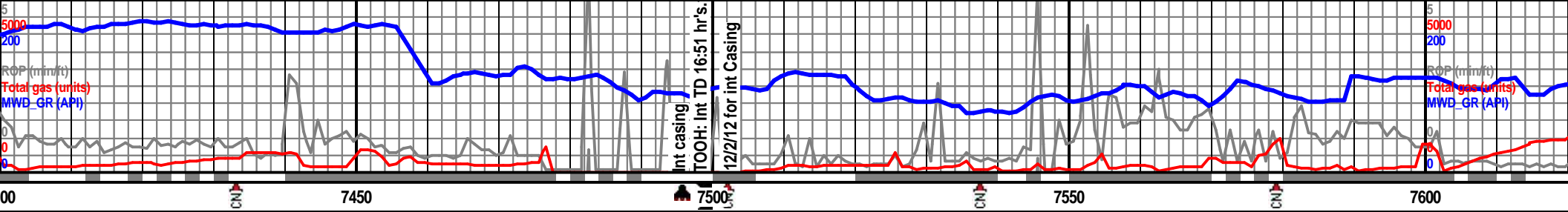
- Well
- Moderate
- Poor



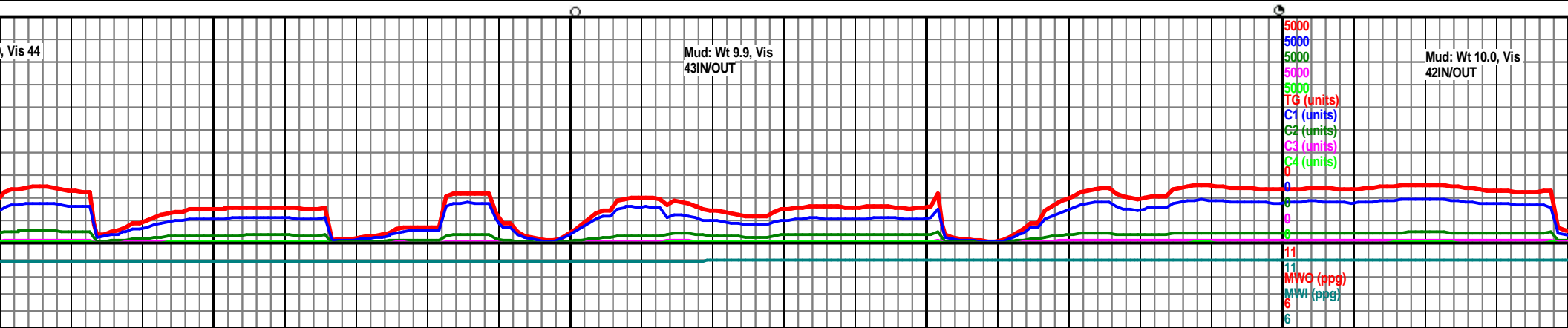
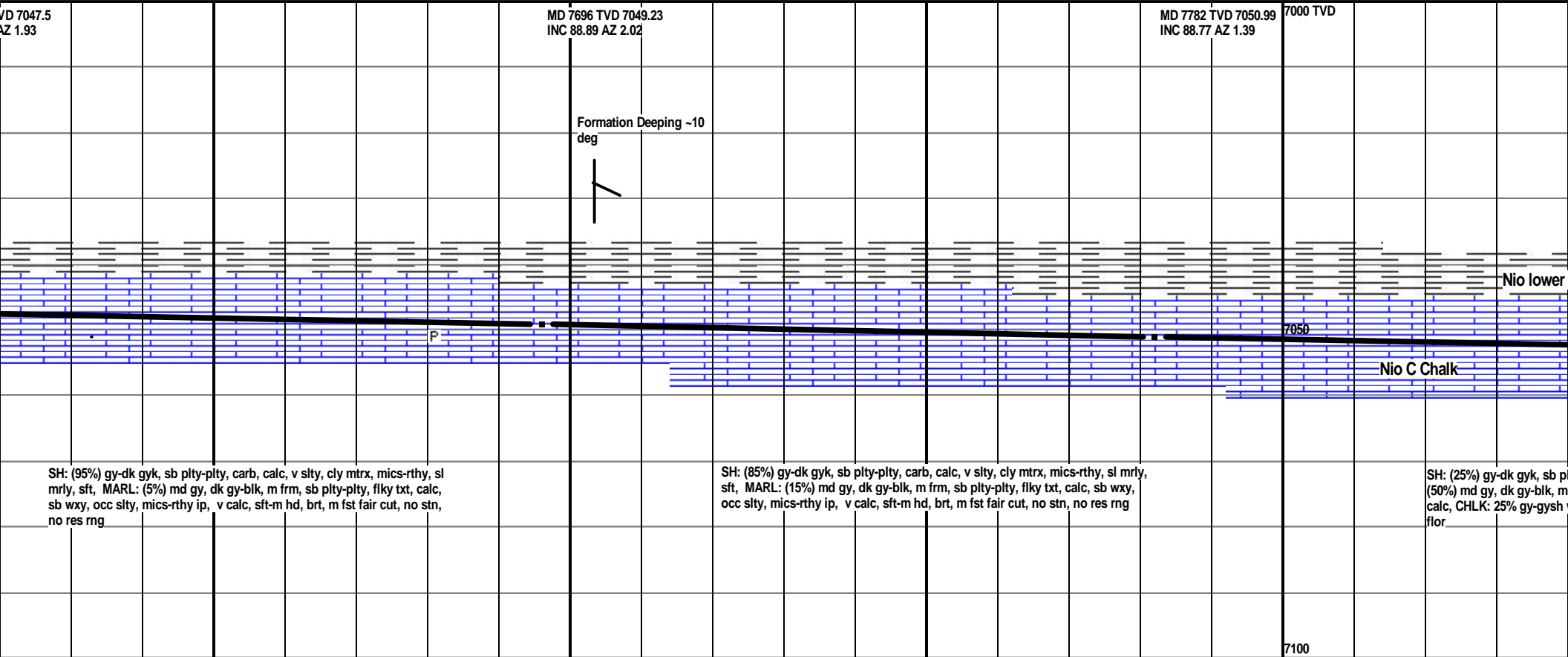


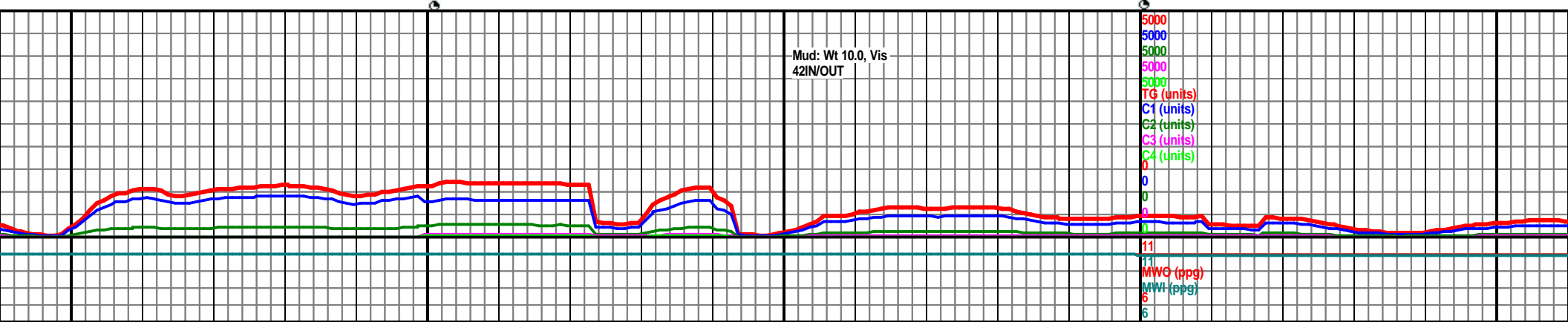
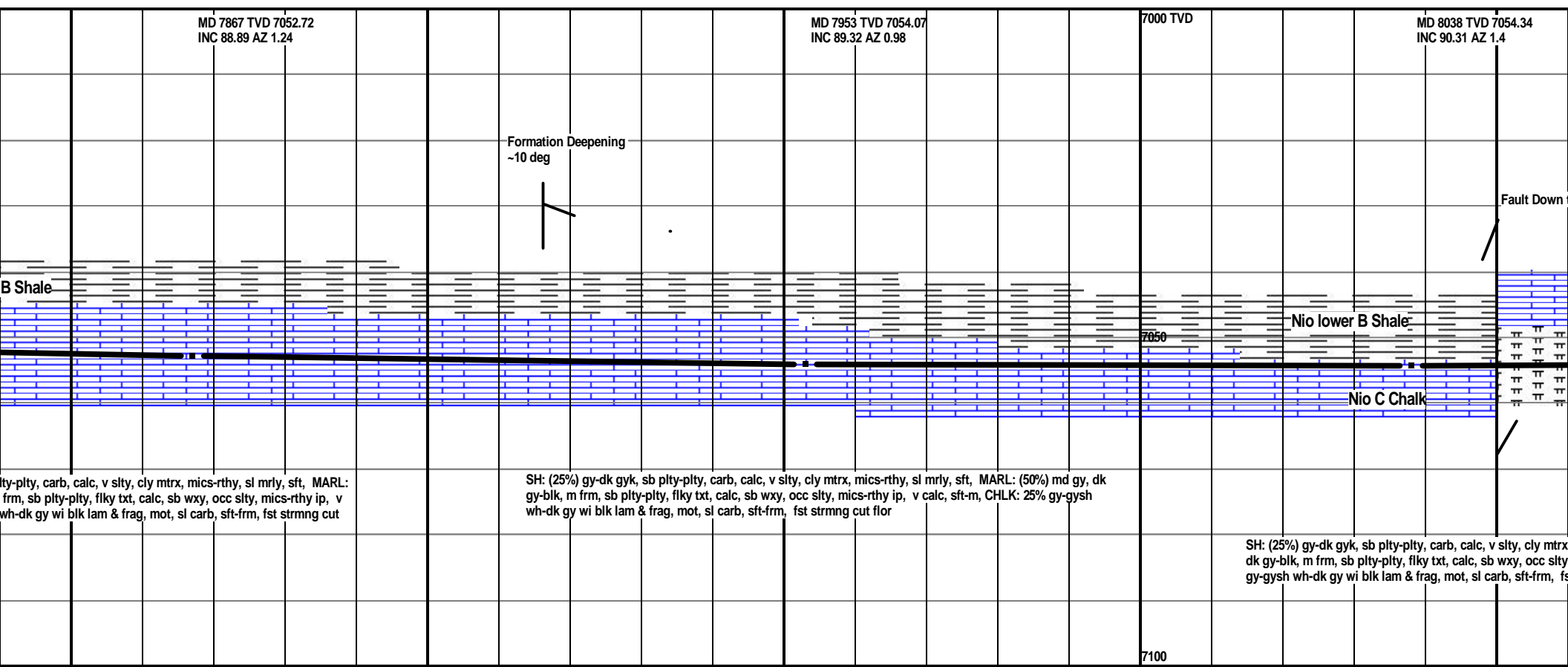
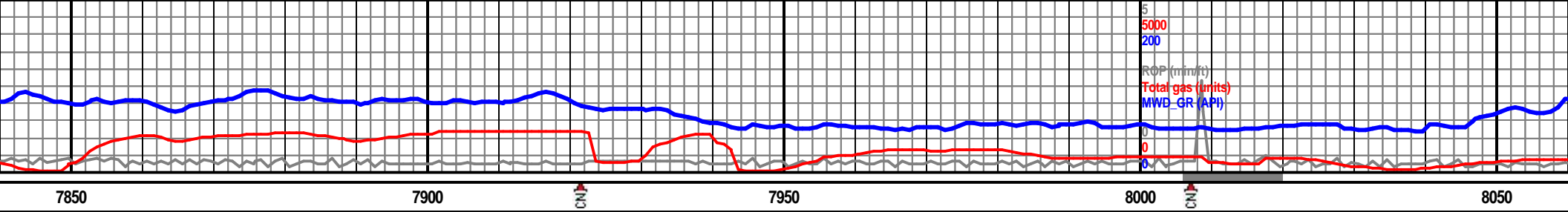


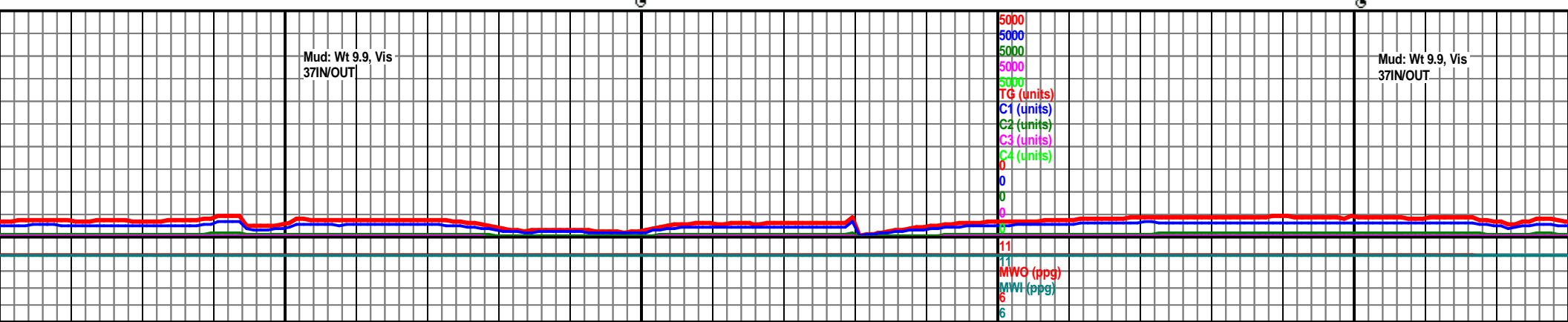
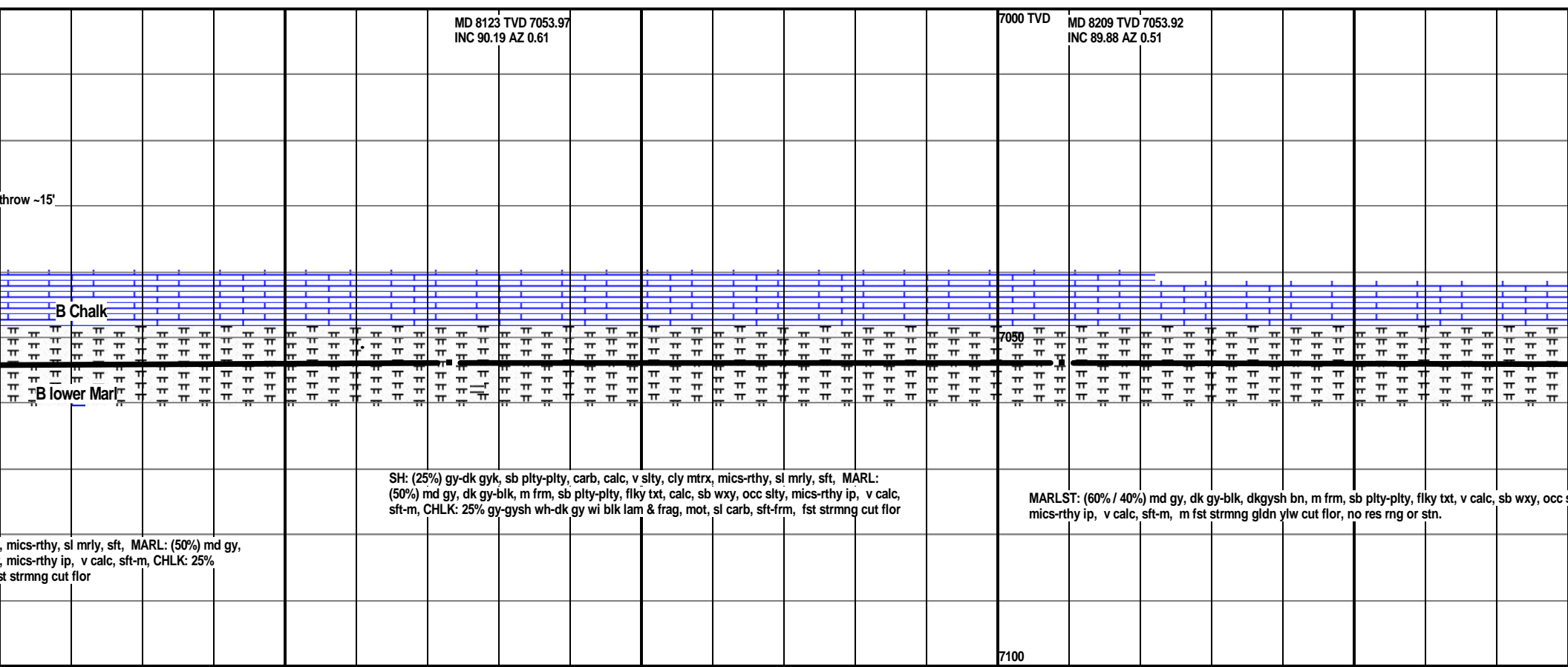
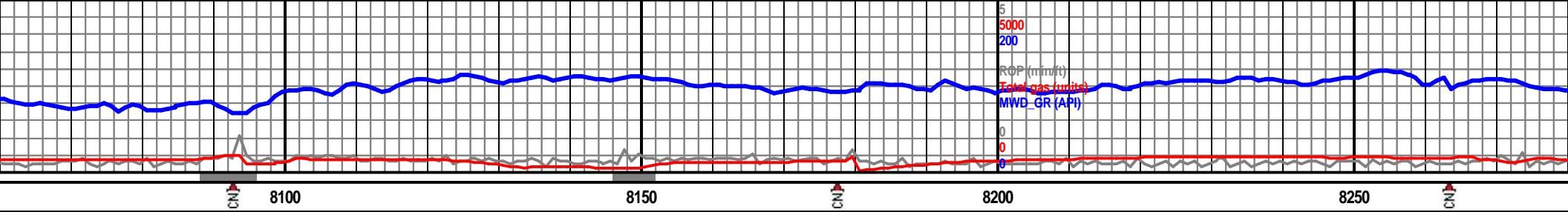


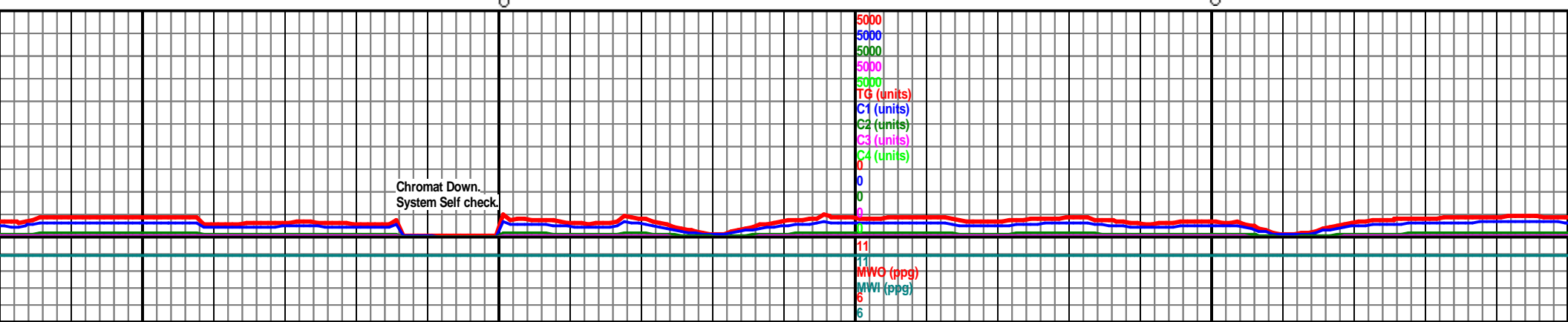
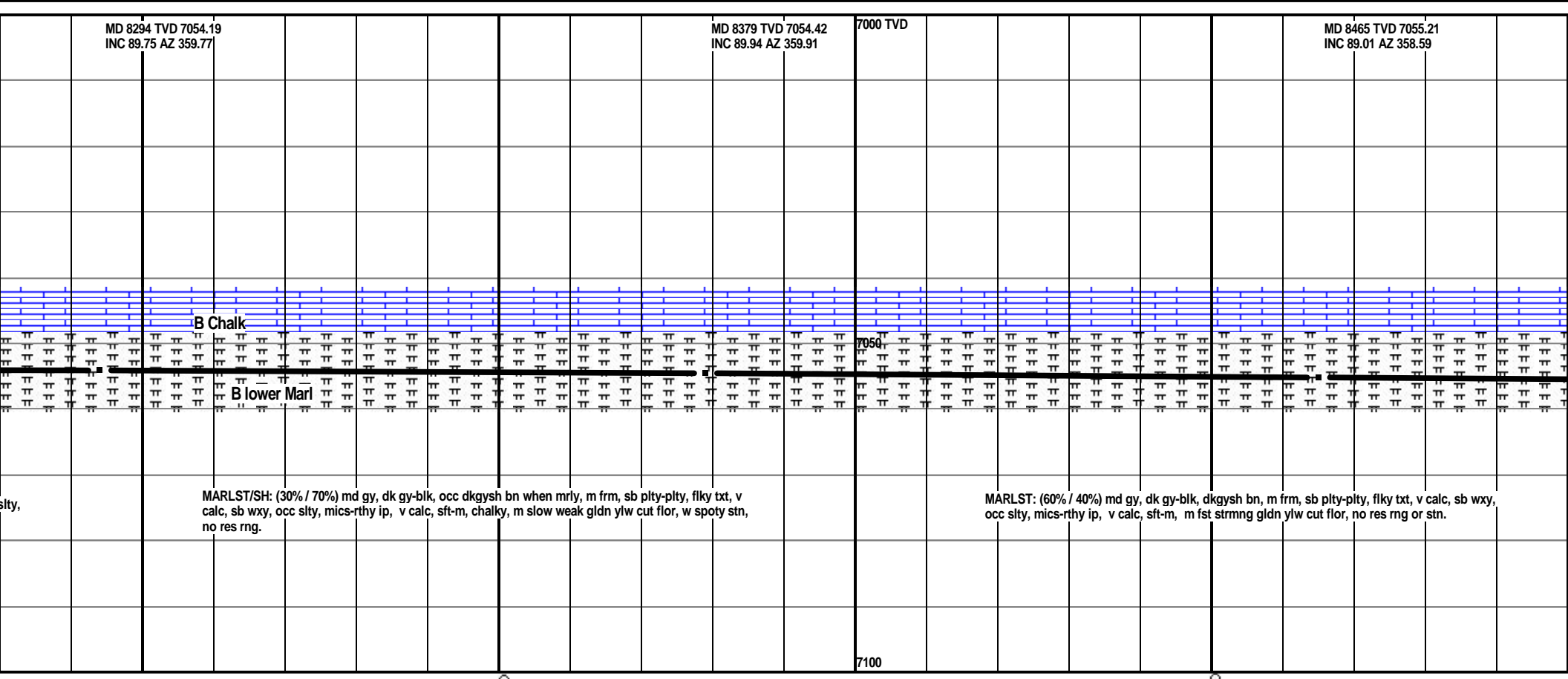
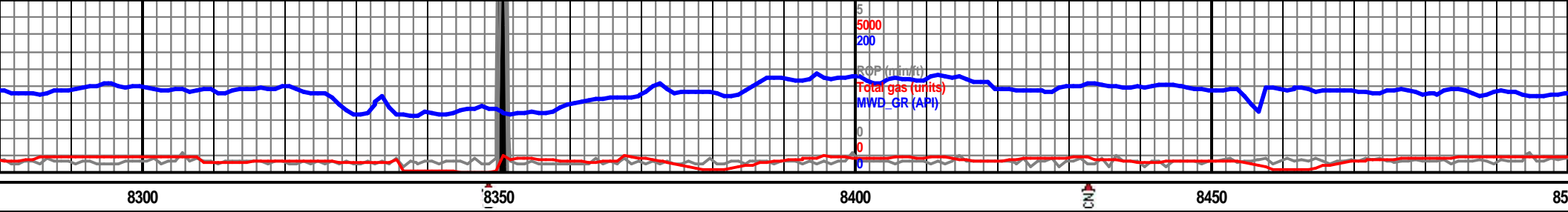


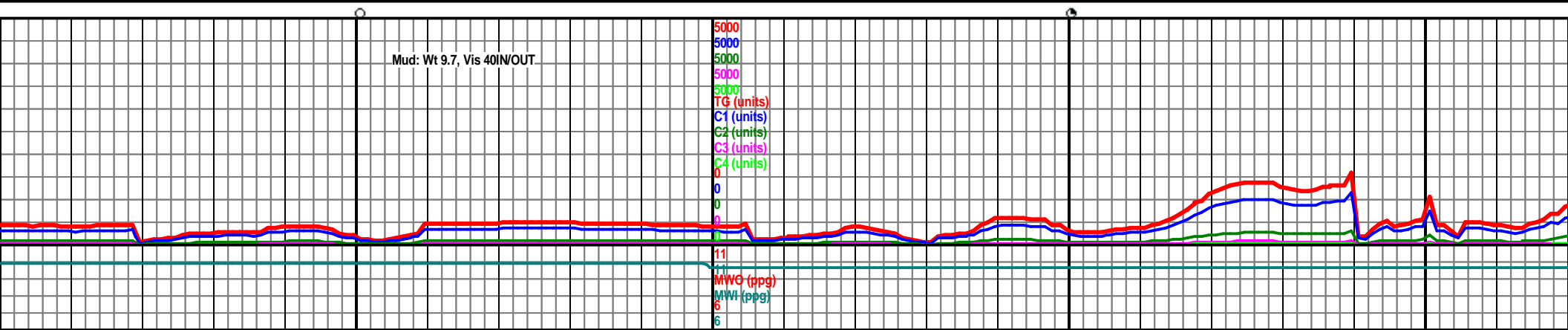
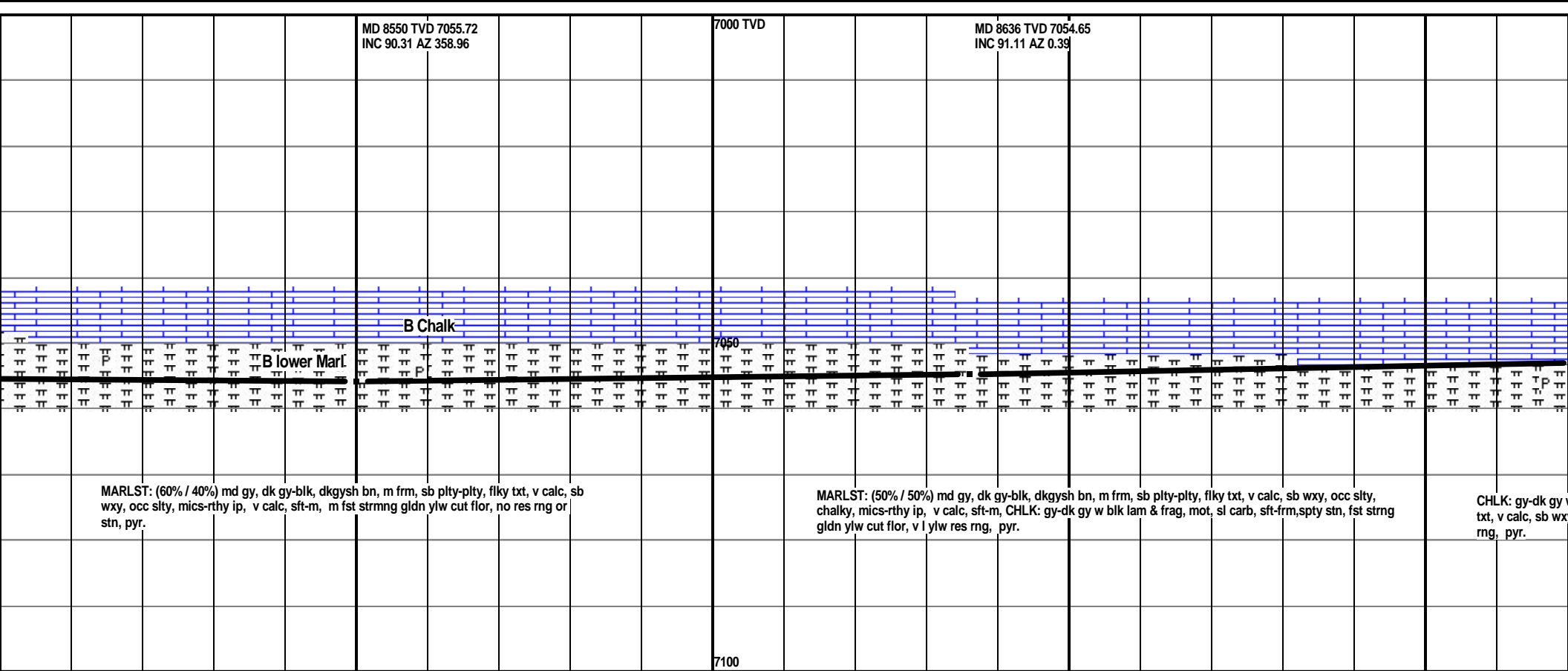
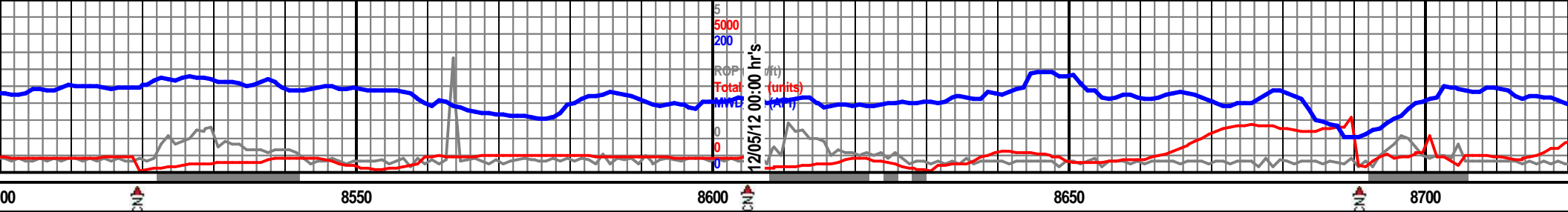


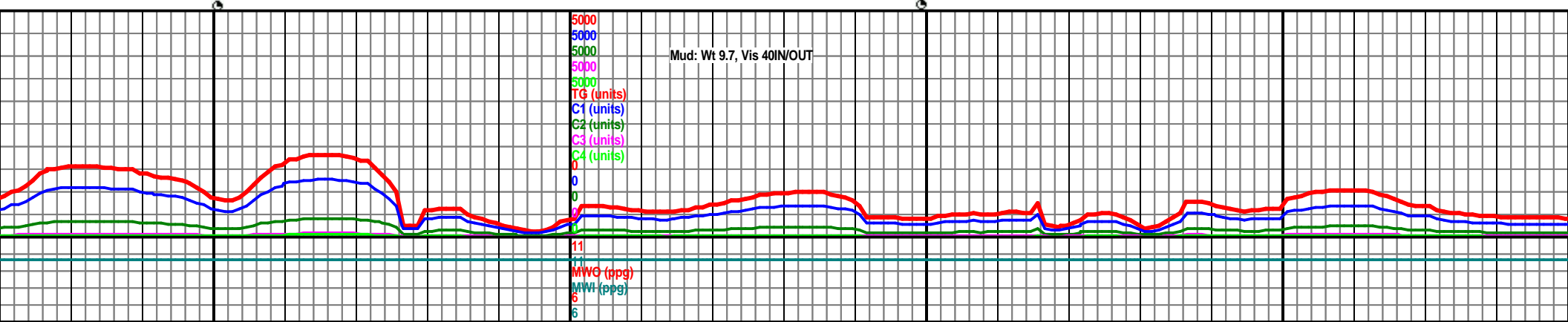
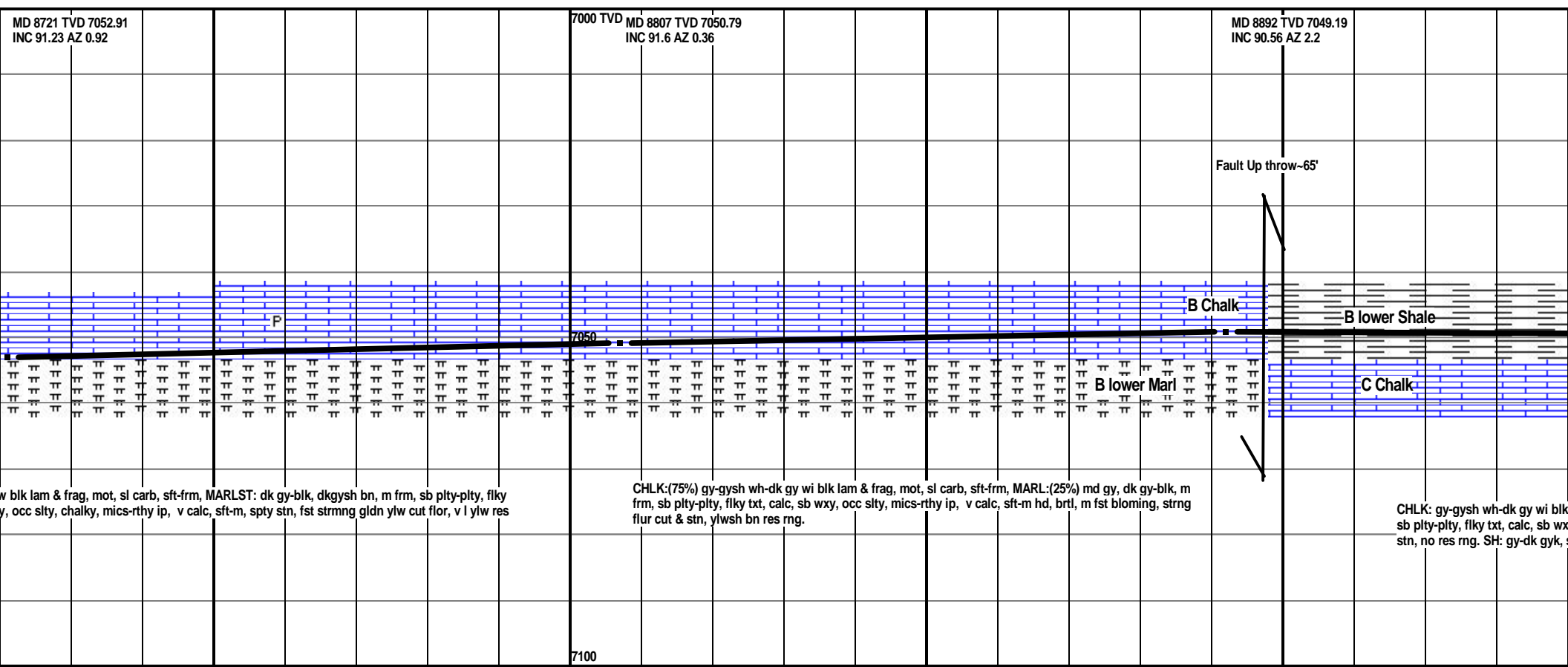
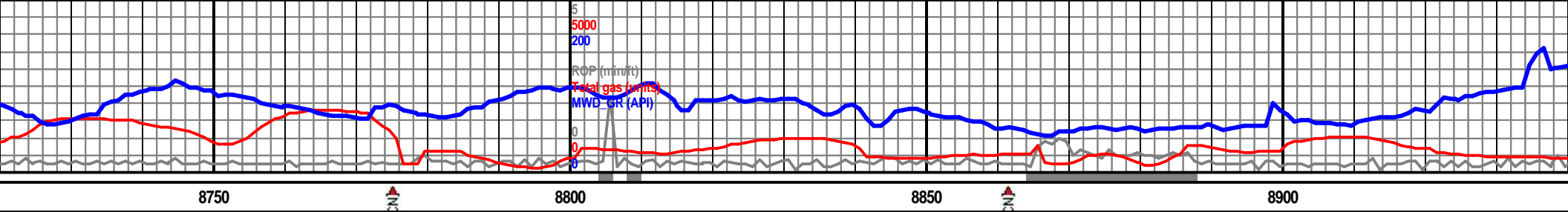


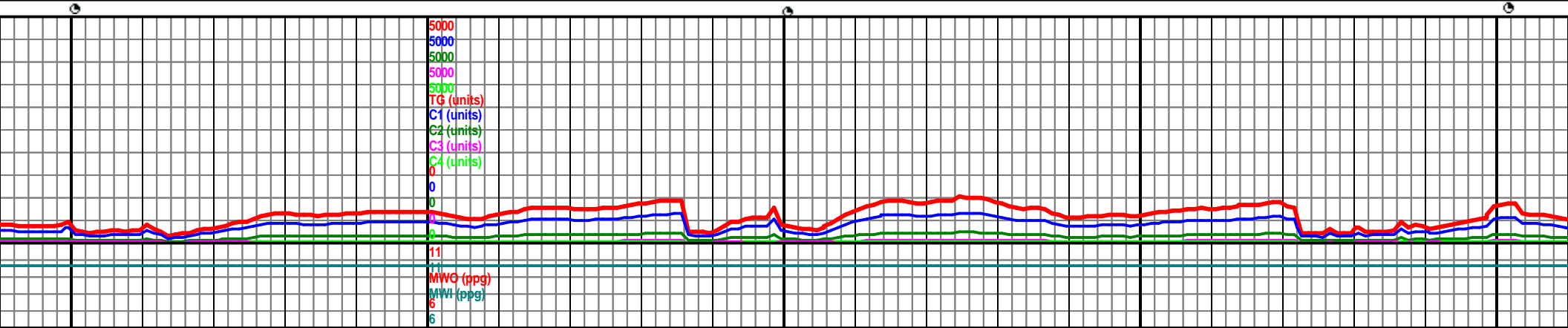
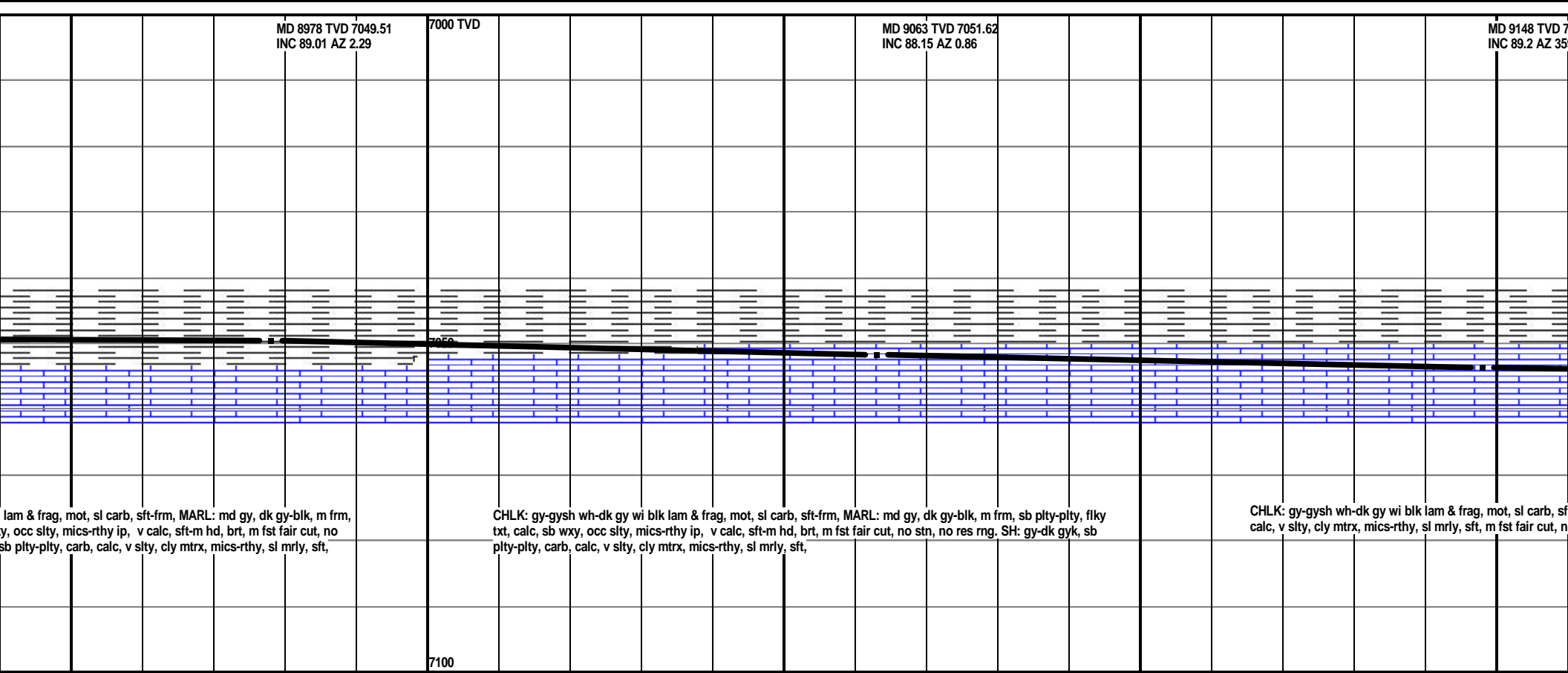


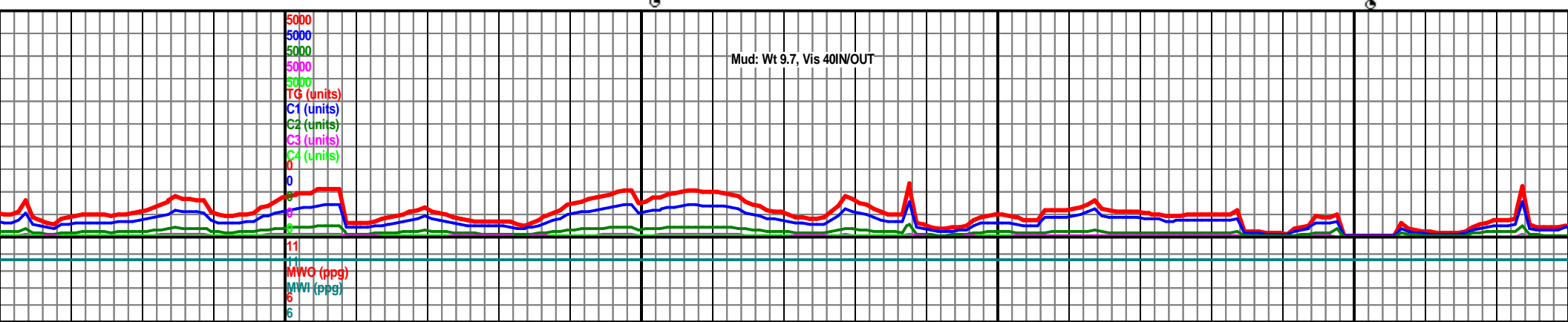
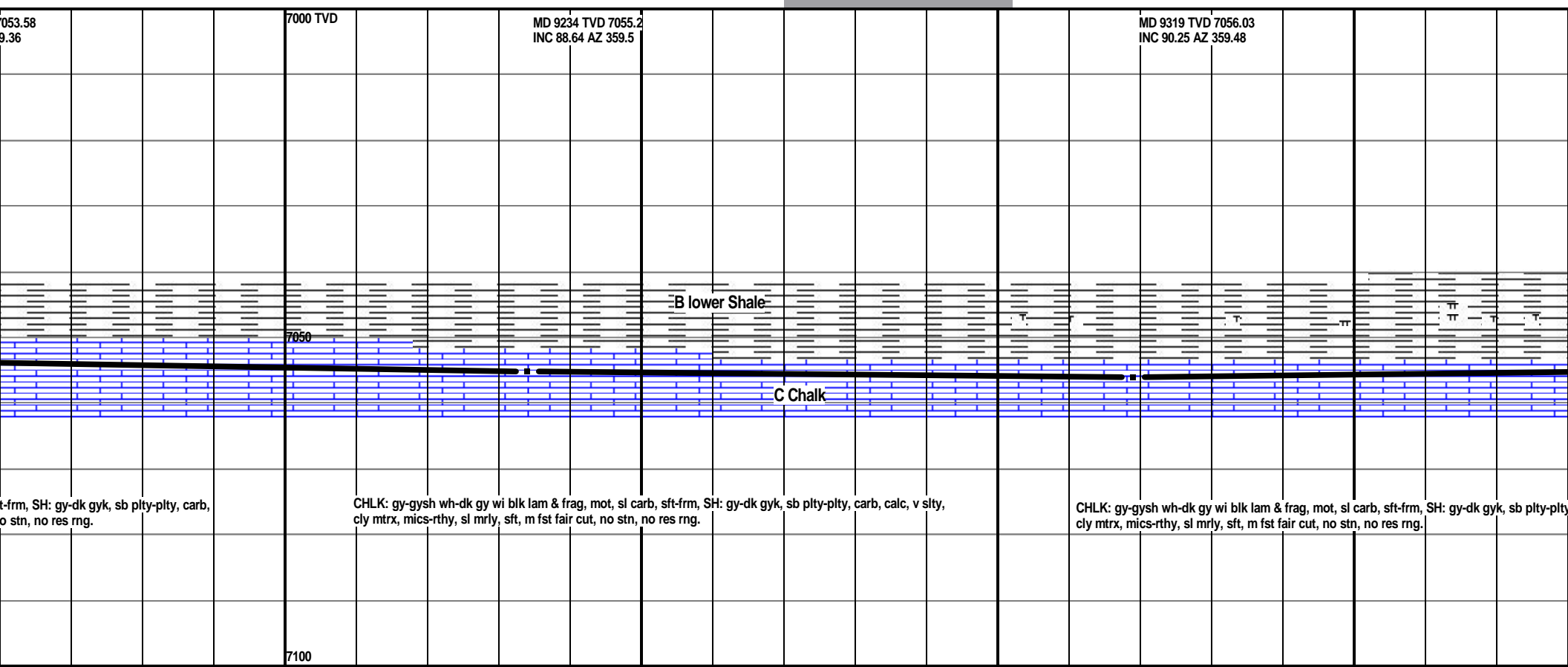
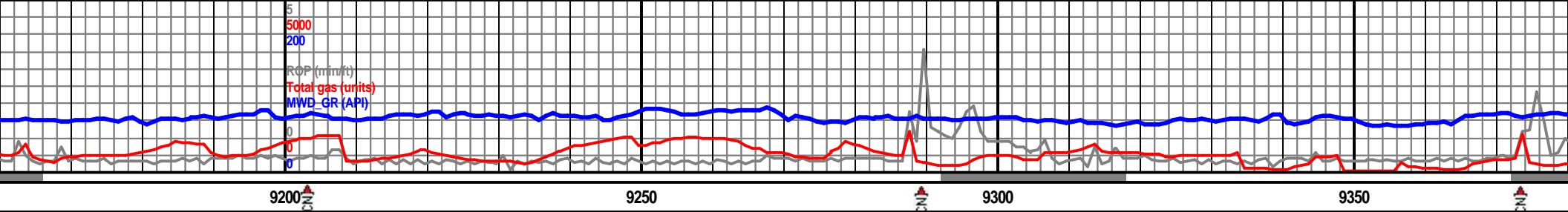






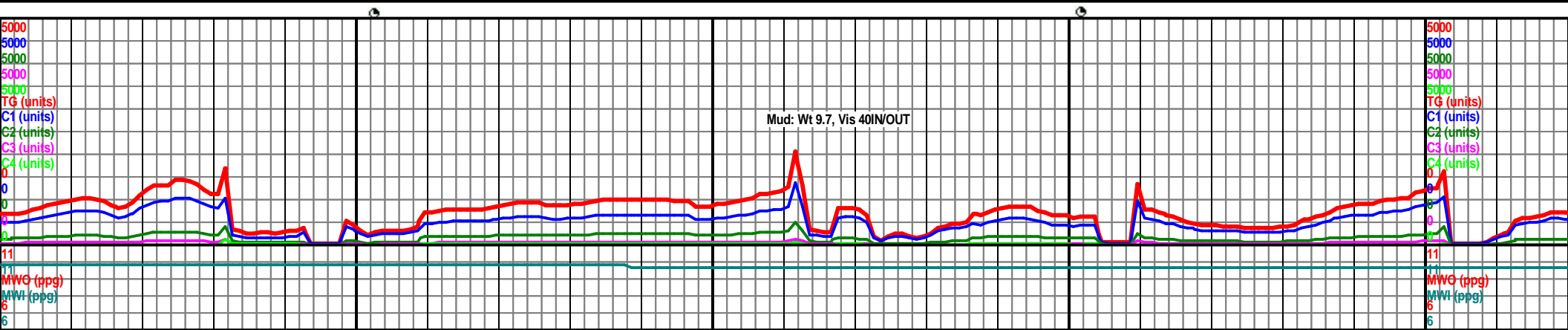
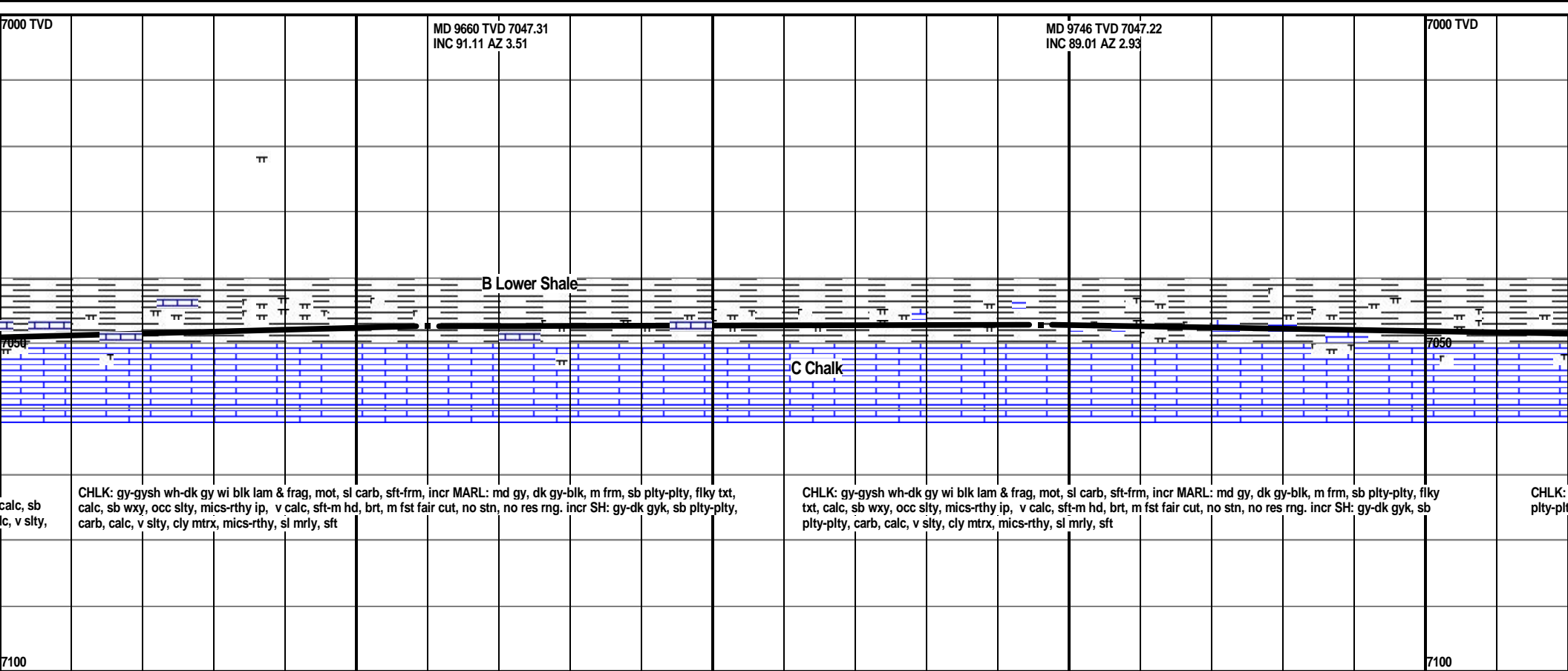


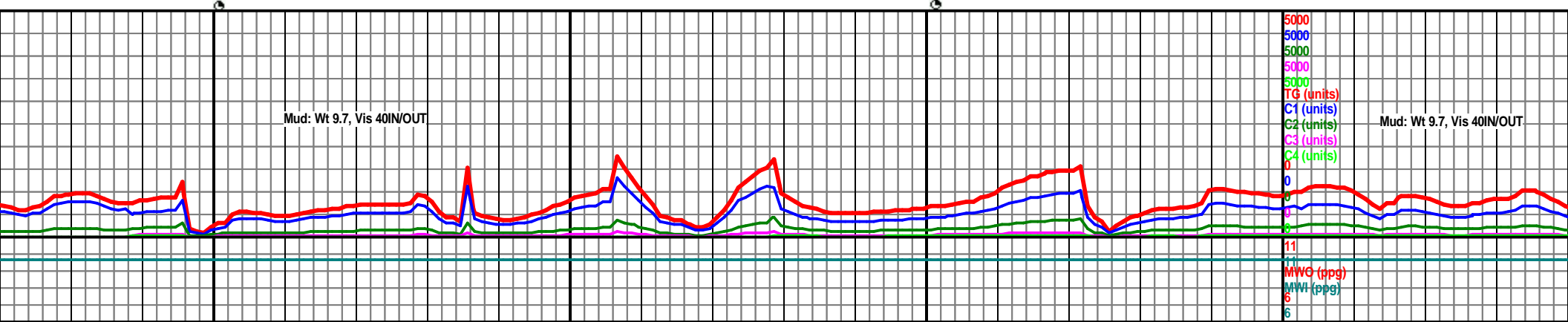
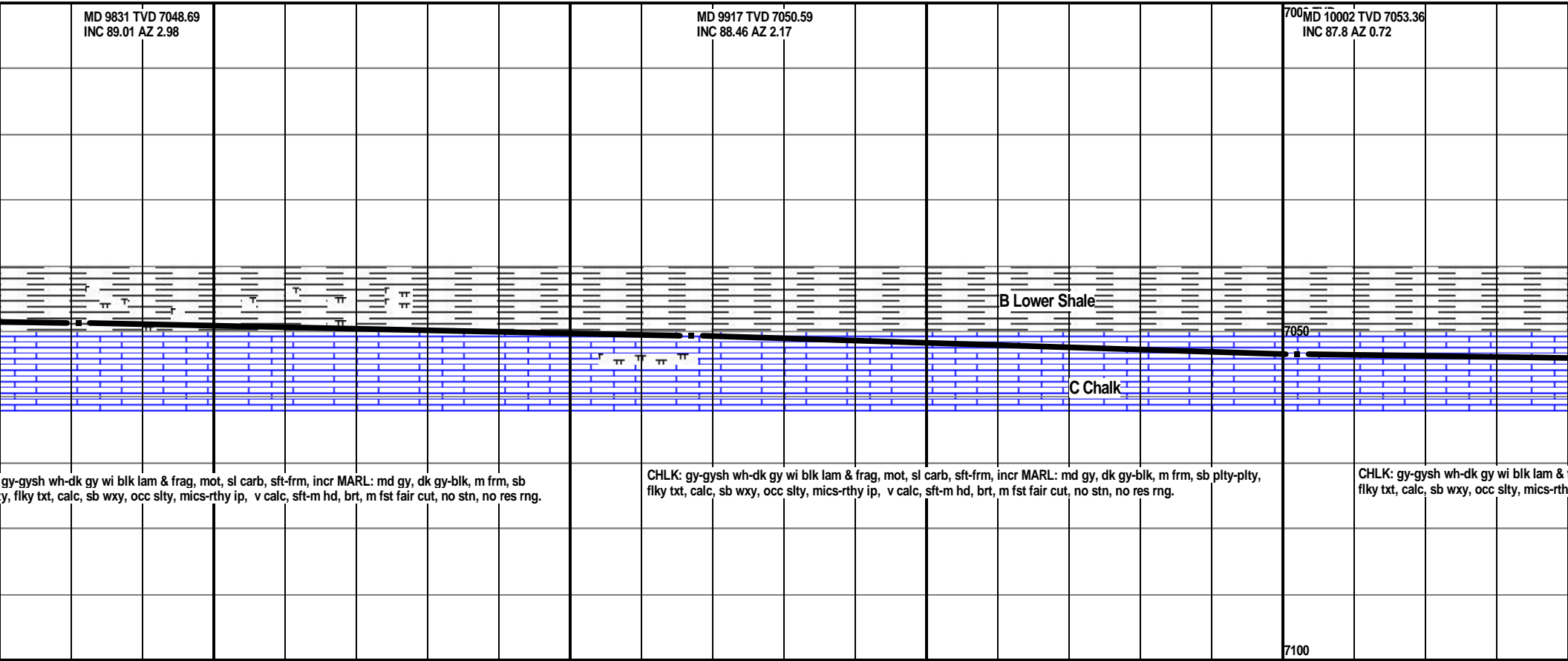
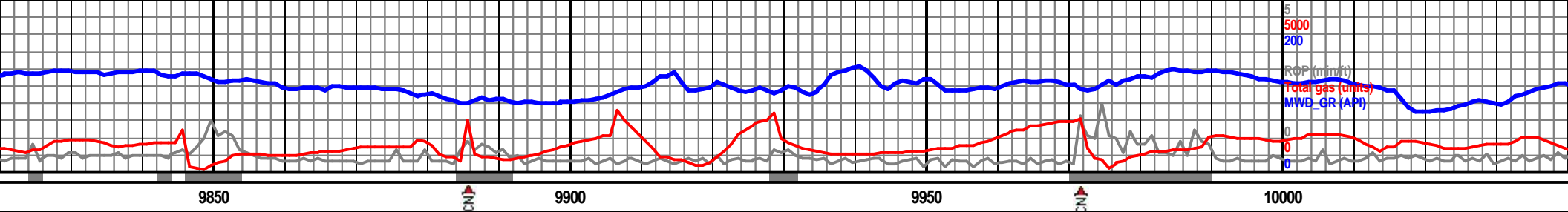


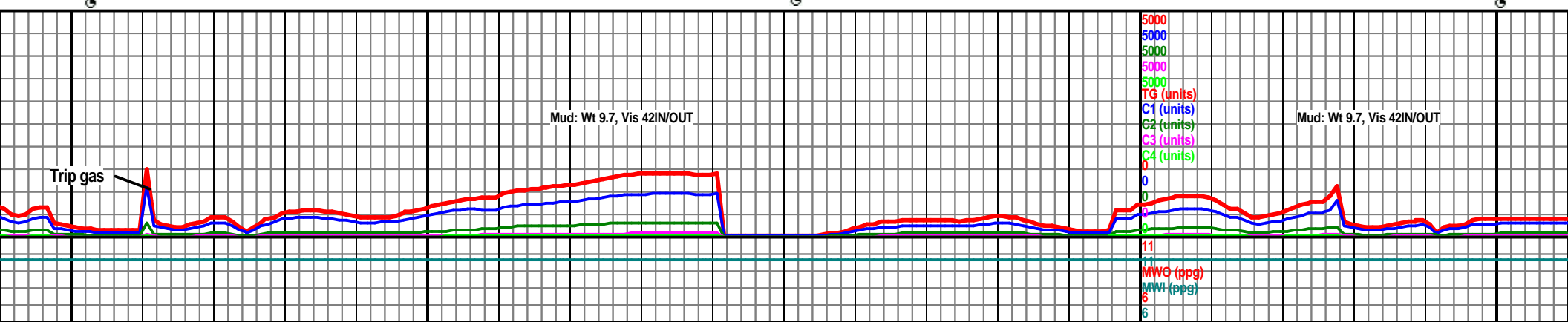
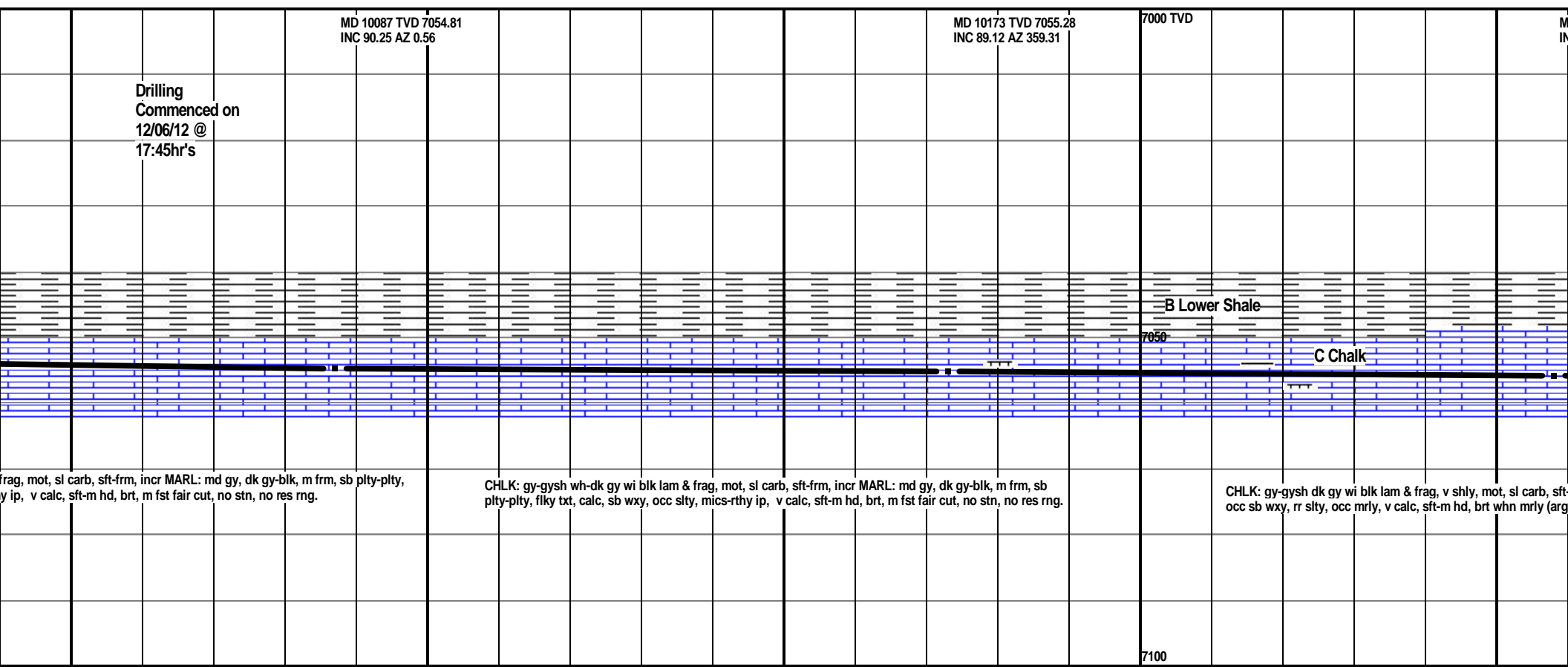
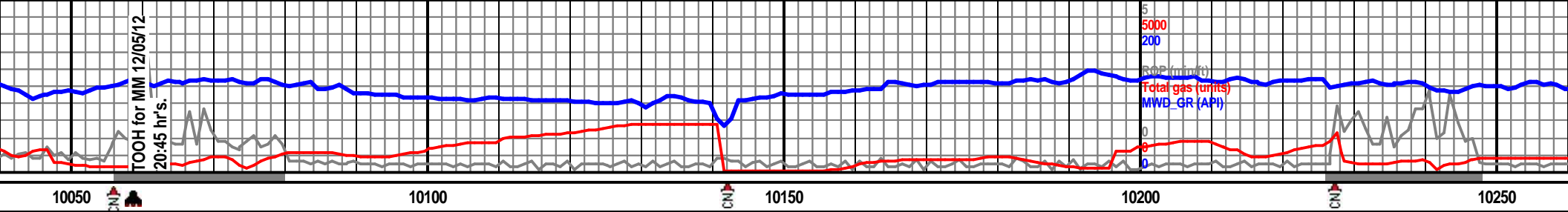


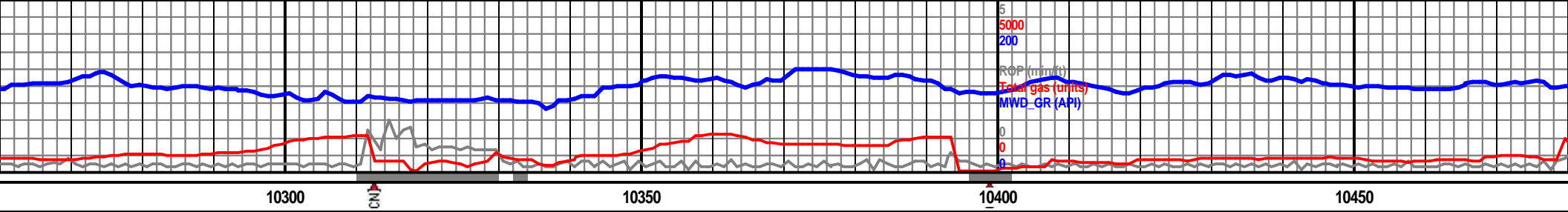










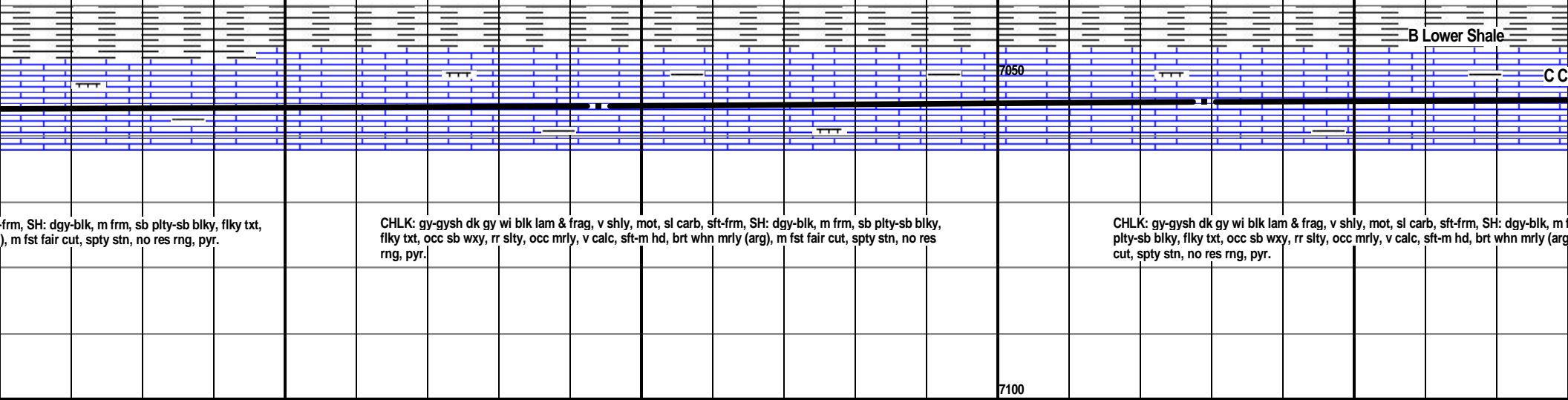


ID 10258 TVD 7055.84  
INC 90.12 AZ 358.4

MD 10344 TVD 7055.39  
INC 90.49 AZ 0.24

7000 TVD

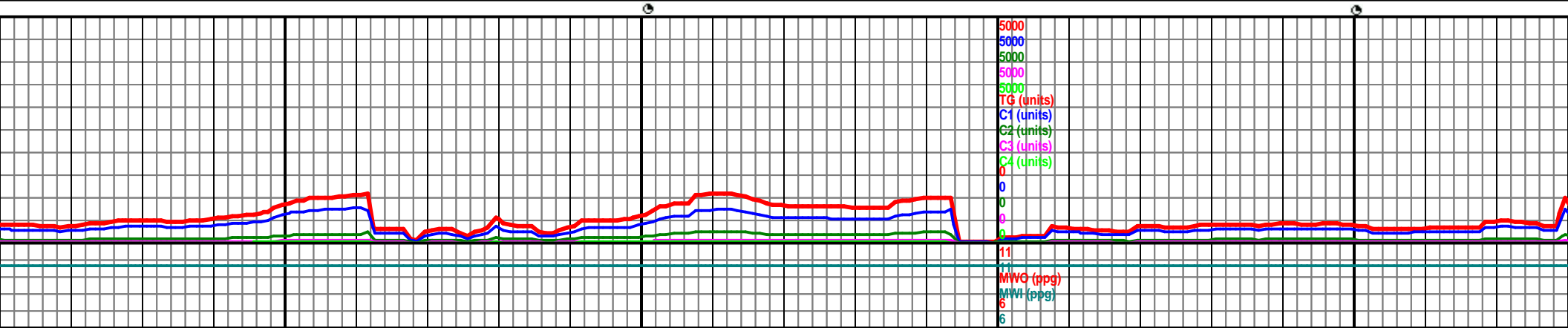
MD 10429 TVD 7054.79  
INC 90.31 AZ 359.47



frm, SH: dgy-blk, m frm, sb plty-sb blk, flky txt,  
, m fst fair cut, spty stn, no res rng, pyr.

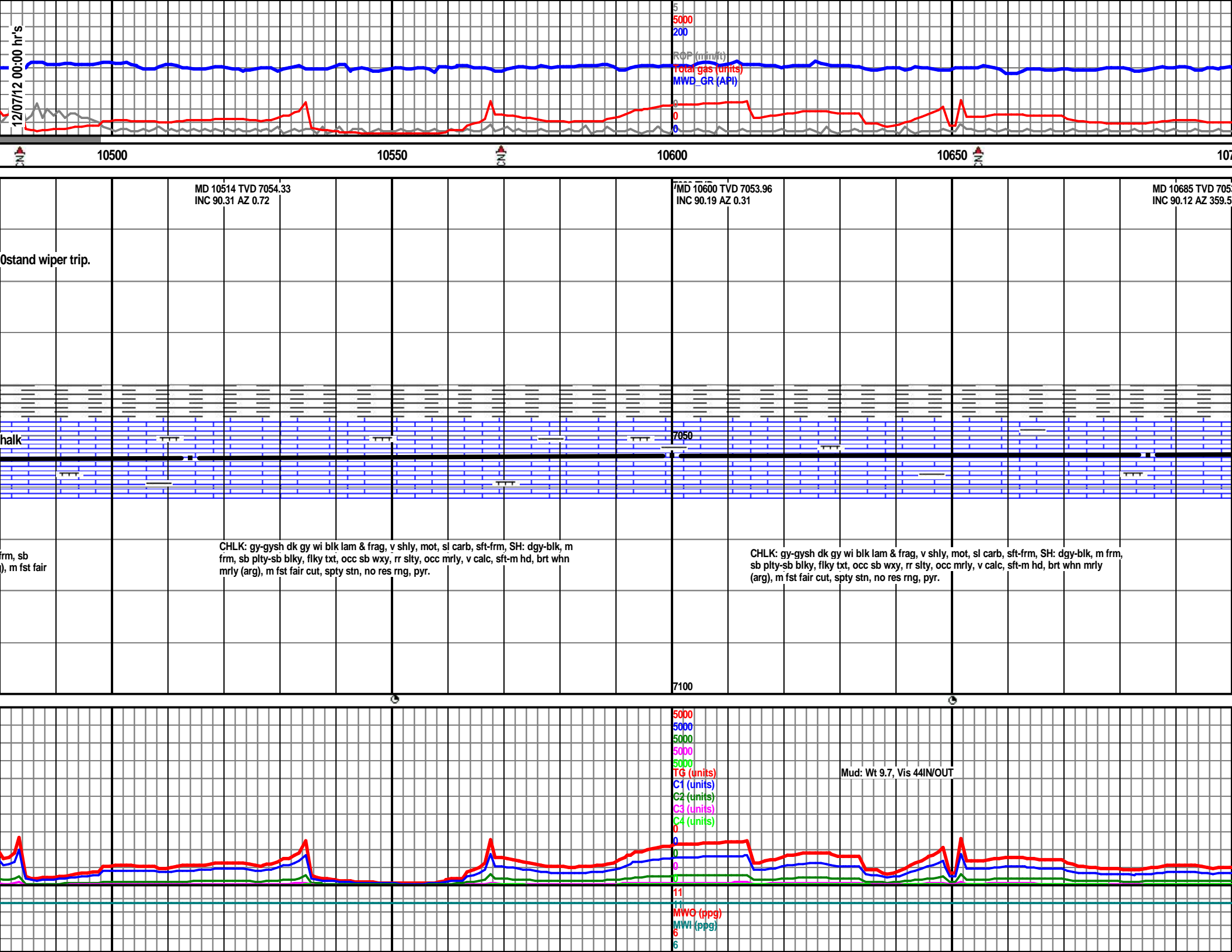
CHLK: gy-gysh dk gy wi blk lam & frag, v shly, mot, sl carb, sft-frm, SH: dgy-blk, m frm, sb plty-sb blk,  
flky txt, occ sb wxy, rr slty, occ mrlly, v calc, sft-m hd, brt whn mrlly (arg), m fst fair cut, spty stn, no res  
rng, pyr.

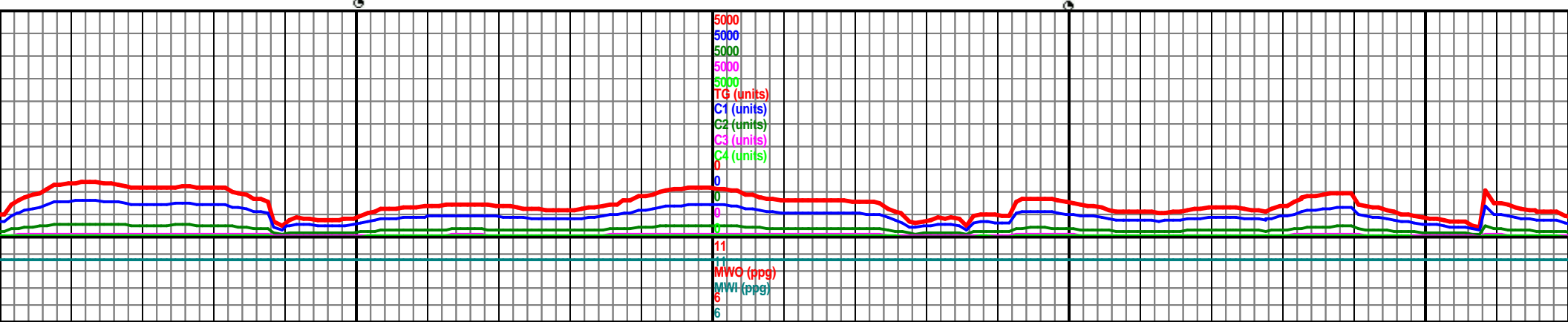
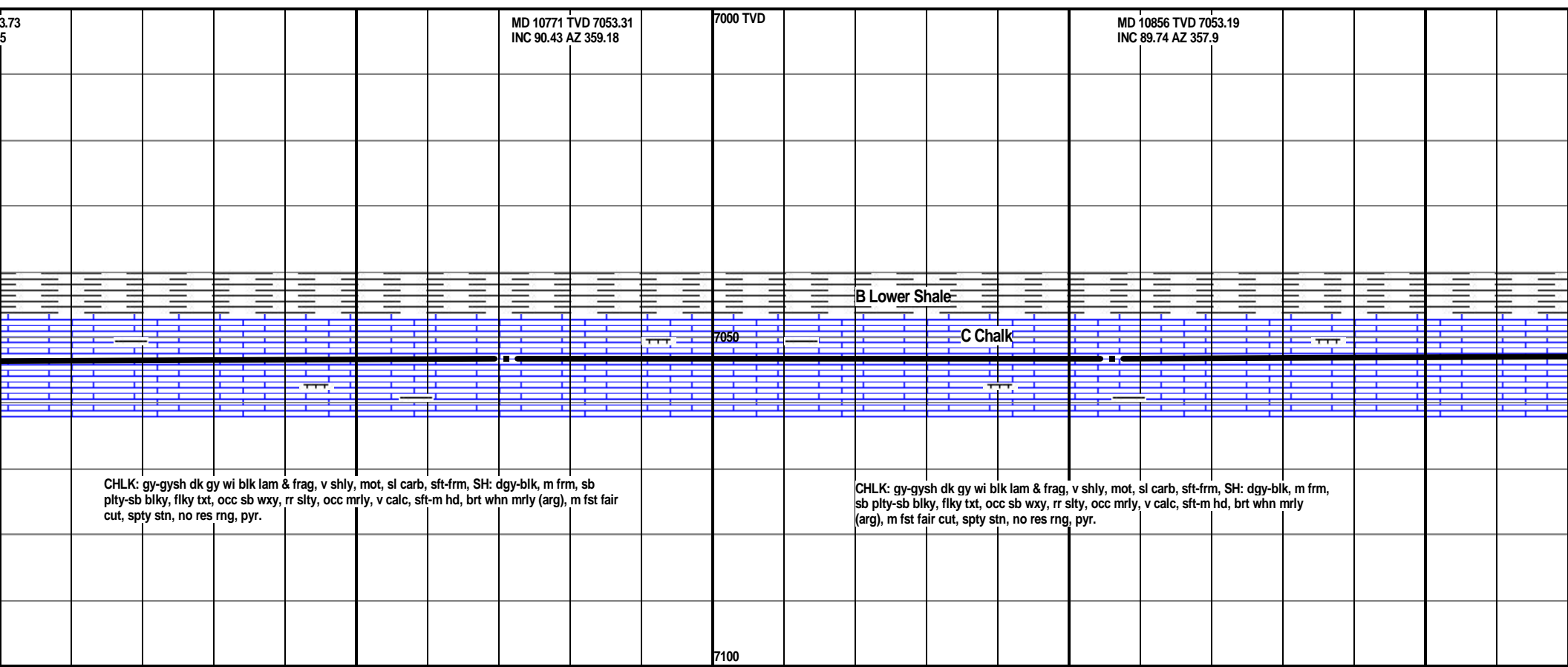
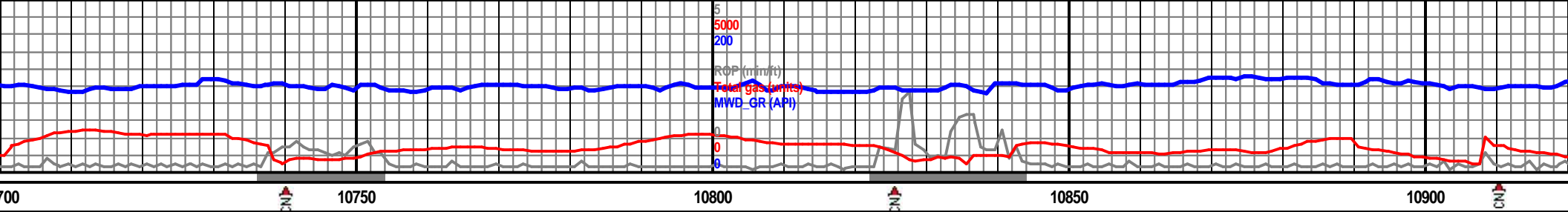
CHLK: gy-gysh dk gy wi blk lam & frag, v shly, mot, sl carb, sft-frm, SH: dgy-blk, m  
plty-sb blk, flky txt, occ sb wxy, rr slty, occ mrlly, v calc, sft-m hd, brt whn mrlly (arg)  
cut, spty stn, no res rng, pyr.

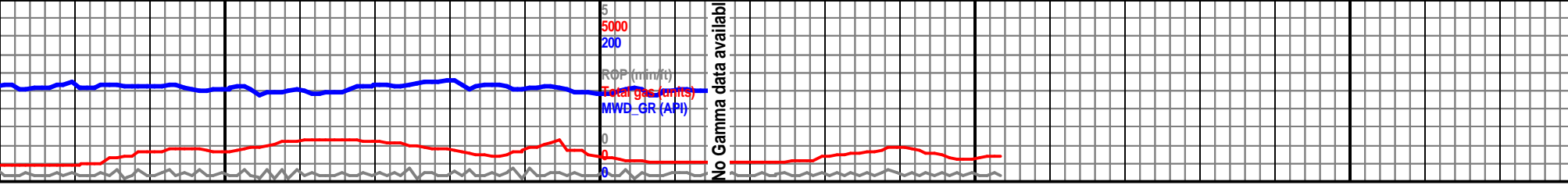


5000  
5000  
5000  
5000  
5000  
5000  
TG (units)  
C1 (units)  
C2 (units)  
C3 (units)  
C4 (units)

11  
MWD (ppg)  
MWD (ppg)  
6  
6







10950 11000 11050 11100

