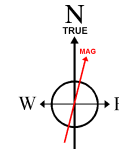
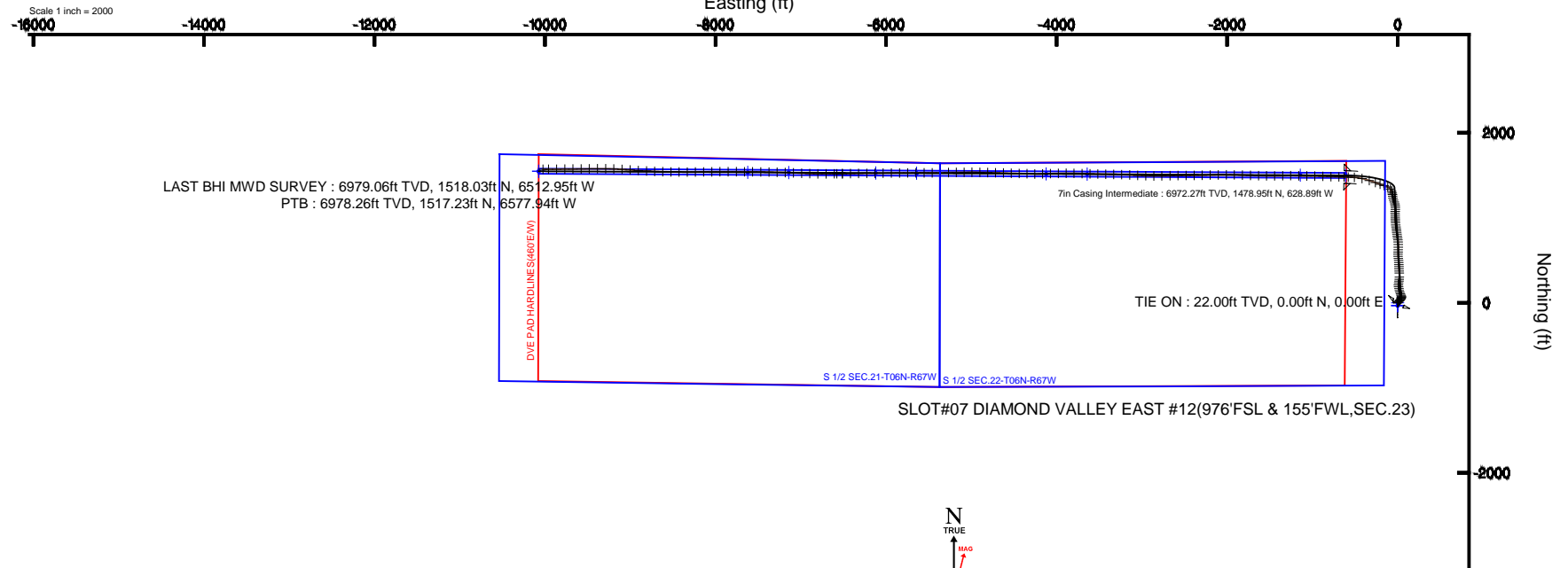


EXTRACTION OIL & GAS

Location: COLORADO Slot: SLOT#07 DIAMOND VALLEY EAST #12(976'FSL & 155'FWL,SEC.23)
Field: WELD COUNTY (NAD83/TRUE NORTH) Well: DIAMOND VALLEY EAST #12
Facility: SEC.23-T06N-R67W Wellbore: DIAMOND VALLEY EAST #12 PWB

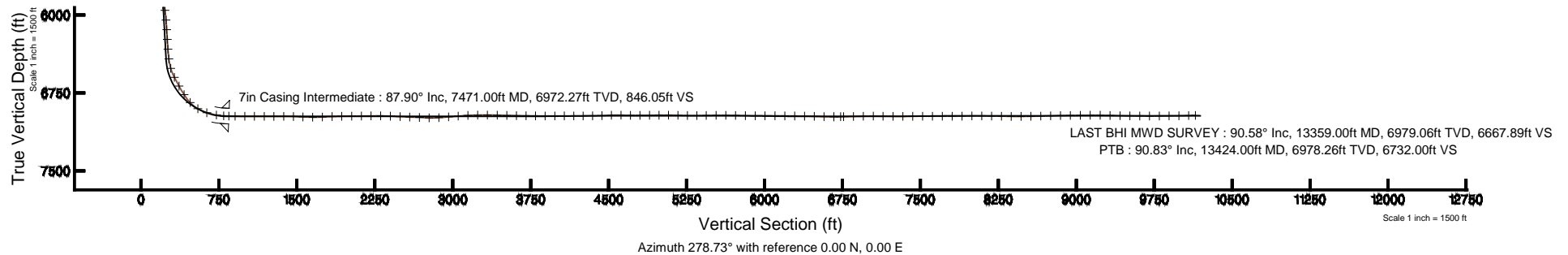


Plot reference wellpath is DIAMOND VALLEY EAST #12 PWB (REV-B.0)	
True vertical depths are referenced to RIG (RKB)	Grid System: NAD83 / Lambert Colorado SP, Northern Zone (501), US feet
Measured depths are referenced to RIG (RKB)	North Reference: True north
RIG (RKB) to Mean Sea Level: 4791 feet	Scale: True distance
Mean Sea Level to Mud line (At Slot: SLOT#07 DIAMOND VALLEY EAST #12(976'FSL & 155'FWL,SEC.23)): 0 feet	Depths are in feet
Coordinates are in feet referenced to Slot	
Created by: painsetr on 11/17/2014	



BGGM (1945.0 to 2016.0) Dip: 66.96° Field: 52737 nT
Magnetic North is 8.57 degrees East of True North (at 10/22/2014)

To correct azimuth from Magnetic to True add 8.57 degrees





Actual Wellpath Report

DIAMOND VALLEY EAST #12 AWP

Page 1 of 11



REFERENCE WELLPATH IDENTIFICATION			
Operator	EXTRACTION OIL & GAS	Slot	SLOT#07 DIAMOND VALLEY EAST #12(976'FSL & 155'FWL,SEC.23)
Area	COLORADO	Well	DIAMOND VALLEY EAST #12
Field	WELD COUNTY (NAD83/TRUE NORTH)	Wellbore	DIAMOND VALLEY EAST #12 AWB
Facility	SEC.23-T06N-R67W		

REPORT SETUP INFORMATION			
Projection System	NAD83 / Lambert Colorado SP, Northern Zone (501), US feet	Software System	WellArchitect® 4.0.0
North Reference	True	User	Painsetr
Scale	0.999964	Report Generated	11/17/2014 at 2:48:24 PM
Convergence at slot	n/a	Database/Source file	WA_Denver/DIAMOND_VALLEY_EAST_#12_AWB.xml

WELLPATH LOCATION						
	Local coordinates		Grid coordinates		Geographic coordinates	
	North[ft]	East[ft]	Easting[US ft]	Northing[US ft]	Latitude	Longitude
Slot Location	160.30	2.78	3175340.01	1413912.11	40°28'04.368"N	104°52'11.280"W
Facility Reference Pt			3175338.36	1413751.81	40°28'02.784"N	104°52'11.316"W
Field Reference Pt			3185481.27	1419166.81	40°28'55.560"N	104°49'59.556"W

WELLPATH DATUM			
Calculation method	Minimum curvature	RIG (RKB) to Facility Vertical Datum	4791.00ft
Horizontal Reference Pt	Slot	RIG (RKB) to Mean Sea Level	4791.00ft
Vertical Reference Pt	RIG (RKB)	RIG (RKB) to Mud Line at Slot (SLOT#07 DIAMOND VALLEY EAST #12(976'FSL & 155'FWL,SEC.23))	4791.00ft
MD Reference Pt	RIG (RKB)	Section Origin	N 0.00, E 0.00 ft
Field Vertical Reference	Mean Sea Level	Section Azimuth	278.73°



Actual Wellpath Report

DIAMOND VALLEY EAST #12 AWP

Page 2 of 11



REFERENCE WELLPATH IDENTIFICATION

Operator	EXTRACTION OIL & GAS	Slot	SLOT#07 DIAMOND VALLEY EAST #12(976'FSL & 155'FWL,SEC.23)
Area	COLORADO	Well	DIAMOND VALLEY EAST #12
Field	WELD COUNTY (NAD83/TRUE NORTH)	Wellbore	DIAMOND VALLEY EAST #12 AWB
Facility	SEC.23-T06N-R67W		

WELLPATH DATA (177 stations) † = interpolated/extrapolated station

MD [ft]	Inclination [°]	Azimuth [°]	TVD [ft]	Vert Sect [ft]	North [ft]	East [ft]	DLS [°/100ft]	Comments
0.00†	0.000	27.160	0.00	0.00	0.00	0.00	0.00	
22.00	0.000	27.160	22.00	0.00	0.00	0.00	0.00	TIE ON
275.00	1.820	27.160	274.96	-1.27	3.57	1.83	0.72	
367.00	2.900	41.050	366.88	-2.98	6.63	4.03	1.32	
549.00	4.690	44.290	548.47	-9.77	15.43	12.25	0.99	
641.00	5.130	44.860	640.13	-14.38	21.04	17.78	0.48	
762.00	5.380	44.160	760.63	-20.86	28.94	25.54	0.21	
911.00	5.060	42.270	909.01	-28.54	38.81	34.83	0.24	
1004.00	5.100	19.280	1001.65	-31.56	45.75	38.95	2.17	
1099.00	4.690	13.120	1096.31	-32.63	53.52	41.23	0.70	
1191.00	4.290	10.590	1188.02	-33.03	60.57	42.72	0.49	
1283.00	3.640	9.930	1279.80	-33.20	66.82	43.85	0.71	
1375.00	3.080	3.720	1371.64	-33.05	72.17	44.52	0.73	
1467.00	6.200	344.000	1463.34	-30.75	79.41	43.31	3.76	
1559.00	8.850	336.780	1554.54	-24.93	90.69	39.15	3.05	
1651.00	10.540	337.140	1645.22	-16.78	104.95	33.09	1.84	
1744.00	13.240	341.110	1736.22	-7.38	122.87	26.33	3.03	
1836.00	14.270	345.350	1825.58	2.00	143.81	20.05	1.57	
1928.00	15.130	350.650	1914.57	10.23	166.63	15.24	1.73	
2020.00	13.460	347.260	2003.72	17.87	188.92	10.92	2.03	
2112.00	14.360	0.300	2093.05	23.46	210.78	8.62	3.54	
2204.00	14.380	13.730	2182.19	24.14	233.29	11.39	3.62	
2296.00	13.180	9.010	2271.55	23.09	254.75	15.75	1.79	
2388.00	15.350	4.480	2360.71	23.94	277.25	18.34	2.65	
2480.00	15.920	2.930	2449.30	26.12	301.99	19.94	0.77	
2665.00	14.410	355.470	2627.87	33.96	350.29	19.42	1.33	
2757.00	15.650	353.930	2716.72	39.76	374.04	17.20	1.42	
2848.00	16.890	0.300	2804.09	44.83	399.46	15.97	2.39	
2944.00	14.480	356.750	2896.51	49.37	425.40	15.36	2.70	
3040.00	13.980	358.310	2989.56	53.96	448.97	14.34	0.66	



Actual Wellpath Report

DIAMOND VALLEY EAST #12 AWP

Page 3 of 11



REFERENCE WELLPATH IDENTIFICATION			
Operator	EXTRACTION OIL & GAS	Slot	SLOT#07 DIAMOND VALLEY EAST #12(976'FSL & 155'FWL,SEC.23)
Area	COLORADO	Well	DIAMOND VALLEY EAST #12
Field	WELD COUNTY (NAD83/TRUE NORTH)	Wellbore	DIAMOND VALLEY EAST #12 AWB
Facility	SEC.23-T06N-R67W		

WELLPATH DATA (177 stations)								
MD [ft]	Inclination [°]	Azimuth [°]	TVD [ft]	Vert Sect [ft]	North [ft]	East [ft]	DLS [°/100ft]	Comments
3135.00	14.890	355.900	3081.56	58.74	472.62	13.13	1.15	
3231.00	16.180	355.530	3174.05	64.54	498.26	11.21	1.35	
3326.00	13.720	350.200	3265.83	71.14	522.56	8.26	2.96	
3422.00	15.020	353.460	3358.83	78.03	546.14	4.90	1.59	
3518.00	15.590	4.230	3451.44	82.32	571.36	4.44	3.02	
3614.00	14.780	1.490	3544.09	84.88	596.47	5.71	1.13	
3710.00	17.700	2.300	3636.25	88.05	623.30	6.61	3.05	
3806.00	19.110	0.690	3727.34	91.89	653.60	7.39	1.56	
3902.00	19.800	358.690	3817.86	96.92	685.57	7.20	1.00	
3997.00	16.900	356.960	3908.02	102.54	715.45	6.10	3.11	
4093.00	13.350	348.890	4000.69	109.15	740.27	3.23	4.29	
4189.00	13.990	350.780	4093.97	116.49	762.60	-0.77	0.81	
4285.00	12.500	350.080	4187.41	123.39	784.29	-4.42	1.56	
4381.00	14.240	353.460	4280.81	129.82	806.25	-7.55	1.99	
4476.00	13.310	351.340	4373.08	136.16	828.67	-10.53	1.11	
4572.00	12.560	358.150	4466.65	141.38	850.03	-12.53	1.77	
4668.00	12.370	347.490	4560.40	147.02	870.51	-15.10	2.40	
4763.00	13.850	348.870	4652.92	154.57	891.60	-19.50	1.59	
4859.00	15.770	355.640	4745.73	161.43	915.88	-22.71	2.69	
4955.00	14.900	354.400	4838.31	167.44	941.18	-24.90	0.97	
5051.00	12.720	356.180	4931.53	172.79	964.01	-26.81	2.31	
5147.00	12.950	358.690	5025.13	176.96	985.31	-27.76	0.63	
5243.00	13.540	359.460	5118.58	180.65	1007.30	-28.11	0.64	
5339.00	13.910	358.320	5211.84	184.54	1030.07	-28.56	0.48	
5434.00	14.840	355.710	5303.86	189.35	1053.62	-29.80	1.19	
5530.00	12.330	10.540	5397.20	191.79	1075.96	-28.85	4.45	
5626.00	14.290	1.460	5490.63	192.97	1097.89	-26.67	2.98	
5721.00	15.080	356.960	5582.53	196.97	1121.95	-27.03	1.46	
5817.00	11.100	352.900	5676.01	202.04	1143.60	-28.83	4.25	
5913.00	12.950	347.460	5769.91	208.47	1163.27	-32.31	2.26	



Actual Wellpath Report

DIAMOND VALLEY EAST #12 AWP

Page 4 of 11



REFERENCE WELLPATH IDENTIFICATION

Operator	EXTRACTION OIL & GAS	Slot	SLOT#07 DIAMOND VALLEY EAST #12(976'FSL & 155'FWL,SEC.23)
Area	COLORADO	Well	DIAMOND VALLEY EAST #12
Field	WELD COUNTY (NAD83/TRUE NORTH)	Wellbore	DIAMOND VALLEY EAST #12 AWB
Facility	SEC.23-T06N-R67W		

WELLPATH DATA (177 stations)

MD [ft]	Inclination [°]	Azimuth [°]	TVD [ft]	Vert Sect [ft]	North [ft]	East [ft]	DLS [°/100ft]	Comments
6009.00	14.890	336.990	5863.10	218.86	1185.13	-39.47	3.30	
6104.00	14.710	338.940	5954.95	231.27	1207.62	-48.57	0.56	
6200.00	14.080	348.960	6047.95	241.28	1230.46	-55.19	2.67	
6296.00	14.410	355.550	6141.00	247.95	1253.83	-58.35	1.72	
6392.00	9.890	349.220	6234.83	253.43	1273.85	-60.82	4.90	
6487.00	10.980	345.990	6328.26	259.65	1290.65	-64.54	1.30	
6583.00	13.580	341.550	6422.06	268.34	1310.21	-70.32	2.88	
6679.00	23.270	324.700	6513.09	286.72	1336.46	-84.89	11.42	
6775.00	28.330	295.800	6599.83	321.83	1361.97	-116.50	13.96	
6871.00	29.350	287.980	6683.95	366.85	1379.15	-159.40	4.07	
6967.00	32.480	288.430	6766.30	415.49	1394.57	-206.25	3.27	
7063.00	43.360	289.620	6841.92	473.43	1413.84	-261.91	11.36	
7159.00	59.580	287.900	6901.53	547.15	1437.79	-332.82	16.95	
7255.00	72.800	283.300	6940.21	634.15	1461.17	-417.24	14.45	
7350.00	80.530	273.660	6962.16	726.40	1474.65	-508.50	12.79	
7421.00	86.830	271.380	6969.97	796.51	1477.75	-578.96	9.43	
7531.00	89.190	271.390	6973.79	905.54	1480.40	-688.86	2.15	
7625.00	89.970	271.990	6974.48	998.82	1483.17	-782.81	1.05	
7719.00	89.970	272.480	6974.53	1092.22	1486.84	-876.74	0.52	
7814.00	89.470	271.260	6974.99	1186.54	1489.94	-971.69	1.39	
7908.00	90.250	269.920	6975.22	1279.59	1490.91	-1065.68	1.65	
8003.00	90.090	272.780	6974.94	1373.79	1493.15	-1160.64	3.02	
8097.00	87.940	269.760	6976.56	1466.96	1495.23	-1254.59	3.94	
8190.00	87.290	268.390	6980.43	1558.57	1493.73	-1347.49	1.63	
8285.00	89.260	269.670	6983.29	1652.16	1492.12	-1442.43	2.47	
8380.00	93.420	271.290	6981.06	1746.13	1492.92	-1537.38	4.70	
8474.00	91.660	271.390	6976.90	1839.25	1495.11	-1631.25	1.88	
8568.00	91.600	271.570	6974.22	1932.46	1497.54	-1725.19	0.20	
8664.00	90.060	272.630	6972.83	2027.81	1501.06	-1821.11	1.95	
8758.00	90.830	271.180	6972.10	2121.13	1504.18	-1915.05	1.75	



Actual Wellpath Report

DIAMOND VALLEY EAST #12 AWP

Page 5 of 11



REFERENCE WELLPATH IDENTIFICATION			
Operator	EXTRACTION OIL & GAS	Slot	SLOT#07 DIAMOND VALLEY EAST #12(976'FSL & 155'FWL,SEC.23)
Area	COLORADO	Well	DIAMOND VALLEY EAST #12
Field	WELD COUNTY (NAD83/TRUE NORTH)	Wellbore	DIAMOND VALLEY EAST #12 AWB
Facility	SEC.23-T06N-R67W		

WELLPATH DATA (177 stations)								
MD [ft]	Inclination [°]	Azimuth [°]	TVD [ft]	Vert Sect [ft]	North [ft]	East [ft]	DLS [°/100ft]	Comments
8852.00	90.650	269.260	6970.89	2214.09	1504.54	-2009.04	2.05	
8946.00	89.880	269.220	6970.46	2306.80	1503.30	-2103.03	0.82	
9041.00	87.260	269.110	6972.83	2400.44	1501.91	-2197.98	2.76	
9136.00	87.010	268.520	6977.57	2493.91	1499.95	-2292.84	0.67	
9230.00	88.000	269.170	6981.67	2586.42	1498.06	-2386.73	1.26	
9325.00	87.530	269.610	6985.37	2680.09	1497.05	-2481.65	0.68	
9420.00	87.570	269.360	6989.43	2773.77	1496.19	-2576.56	0.27	
9514.00	94.970	268.600	6987.35	2866.33	1494.52	-2670.46	7.91	
9610.00	93.790	268.640	6980.02	2960.56	1492.22	-2766.15	1.23	
9704.00	95.210	270.660	6972.64	3053.09	1491.64	-2859.85	2.62	
9798.00	93.080	271.890	6965.85	3146.04	1493.73	-2953.57	2.61	
9893.00	90.220	273.040	6963.11	3240.42	1497.82	-3048.43	3.24	
9987.00	90.400	273.360	6962.60	3333.99	1503.06	-3142.28	0.39	
10082.00	88.030	271.510	6963.91	3428.39	1507.10	-3237.18	3.16	
10175.00	89.540	271.320	6965.88	3520.61	1509.39	-3330.13	1.64	
10269.00	88.210	271.260	6967.72	3613.80	1511.51	-3424.08	1.42	
10361.00	90.030	271.720	6969.14	3705.05	1513.90	-3516.04	2.04	
10454.00	88.610	271.350	6970.24	3797.31	1516.39	-3608.99	1.58	
10546.00	90.250	271.840	6971.16	3888.59	1518.95	-3700.95	1.86	
10641.00	89.940	271.860	6971.00	3982.91	1522.02	-3795.90	0.33	
10733.00	90.250	269.070	6970.85	4073.94	1522.77	-3887.89	3.05	
10825.00	89.350	269.000	6971.17	4164.63	1521.22	-3979.87	0.98	
10917.00	90.650	268.350	6971.17	4255.21	1519.09	-4071.85	1.58	
11009.00	90.550	267.020	6970.20	4345.50	1515.37	-4163.76	1.45	
11101.00	92.310	271.770	6967.91	4436.23	1514.40	-4255.70	5.50	
11193.00	92.400	272.300	6964.13	4527.52	1517.67	-4347.56	0.58	
11285.00	88.150	271.650	6963.68	4618.86	1520.84	-4439.49	4.67	
11377.00	89.570	271.360	6965.51	4710.11	1523.25	-4531.43	1.58	
11469.00	90.490	272.010	6965.47	4801.42	1525.96	-4623.39	1.22	
11562.00	90.650	271.900	6964.54	4893.76	1529.13	-4716.33	0.21	



Actual Wellpath Report

DIAMOND VALLEY EAST #12 AWP

Page 6 of 11



REFERENCE WELLPATH IDENTIFICATION

Operator	EXTRACTION OIL & GAS	Slot	SLOT#07 DIAMOND VALLEY EAST #12(976'FSL & 155'FWL,SEC.23)
Area	COLORADO	Well	DIAMOND VALLEY EAST #12
Field	WELD COUNTY (NAD83/TRUE NORTH)	Wellbore	DIAMOND VALLEY EAST #12 AWB
Facility	SEC.23-T06N-R67W		

WELLPATH DATA (177 stations) † = interpolated/extrapolated station

MD [ft]	Inclination [°]	Azimuth [°]	TVD [ft]	Vert Sect [ft]	North [ft]	East [ft]	DLS [°/100ft]	Comments
11654.00	89.940	270.900	6964.07	4985.01	1531.38	-4808.30	1.33	
11746.00	90.310	271.840	6963.87	5076.25	1533.58	-4900.28	1.10	
11838.00	88.610	269.730	6964.73	5167.35	1534.84	-4992.25	2.95	
11930.00	88.680	269.330	6966.91	5258.14	1534.08	-5084.23	0.44	
12022.00	90.490	269.060	6967.58	5348.87	1532.79	-5176.21	1.99	
12114.00	90.960	268.600	6966.41	5439.49	1530.91	-5268.18	0.71	
12210.00	90.520	269.250	6965.17	5534.08	1529.11	-5364.16	0.82	
12305.00	89.540	269.950	6965.12	5627.88	1528.45	-5459.15	1.27	
12400.00	89.080	269.970	6966.27	5721.76	1528.38	-5554.15	0.48	
12496.00	88.550	269.740	6968.25	5816.59	1528.14	-5650.13	0.60	
12592.00	90.370	269.550	6969.16	5911.38	1527.54	-5746.11	1.91	
12687.00	89.850	269.380	6968.97	6005.14	1526.66	-5841.11	0.58	
12784.00	89.570	269.440	6969.46	6100.85	1525.66	-5938.10	0.30	
12880.00	89.380	269.110	6970.34	6195.55	1524.44	-6034.09	0.40	
12976.00	89.110	269.430	6971.61	6290.23	1523.22	-6130.08	0.44	
13072.00	89.080	269.240	6973.13	6384.93	1522.11	-6226.06	0.20	
13168.00	88.460	269.390	6975.19	6479.62	1520.96	-6322.03	0.66	
13263.00	88.150	269.050	6978.00	6573.27	1519.67	-6416.98	0.48	
13359.00	90.580	269.000	6979.06	6667.89	1518.03	-6512.95	2.53	LAST BHI MWD SURVEY
13424.00†	90.833	269.582	6978.26	6732.00	1517.23	-6577.94	0.98	PTB
13454.00	90.950	269.850	6977.79	6761.63	1517.08	-6607.94	0.98	
13550.00	91.170	269.510	6976.02	6856.42	1516.54	-6703.92	0.42	
13646.00	91.510	270.750	6973.77	6951.31	1516.76	-6799.89	1.34	
13742.00	89.780	272.200	6972.69	7046.53	1519.23	-6895.84	2.35	
13837.00	89.320	272.730	6973.44	7140.96	1523.32	-6990.75	0.74	
13933.00	89.120	272.730	6974.74	7236.42	1527.89	-7086.64	0.21	
14029.00	90.590	271.640	6974.99	7331.79	1531.55	-7182.56	1.91	
14125.00	90.310	271.830	6974.23	7427.08	1534.46	-7278.51	0.35	
14220.00	90.090	271.190	6973.90	7521.32	1536.96	-7373.48	0.71	
14316.00	90.090	271.120	6973.75	7616.48	1538.89	-7469.46	0.07	



Actual Wellpath Report

DIAMOND VALLEY EAST #12 AWP

Page 7 of 11



REFERENCE WELLPATH IDENTIFICATION			
Operator	EXTRACTION OIL & GAS	Slot	SLOT#07 DIAMOND VALLEY EAST #12(976'FSL & 155'FWL,SEC.23)
Area	COLORADO	Well	DIAMOND VALLEY EAST #12
Field	WELD COUNTY (NAD83/TRUE NORTH)	Wellbore	DIAMOND VALLEY EAST #12 AWB
Facility	SEC.23-T06N-R67W		

WELLPATH DATA (177 stations)								
MD [ft]	Inclination [°]	Azimuth [°]	TVD [ft]	Vert Sect [ft]	North [ft]	East [ft]	DLS [°/100ft]	Comments
14412.00	90.120	270.540	6973.57	7711.57	1540.29	-7565.45	0.60	
14508.00	90.060	270.110	6973.42	7806.54	1540.83	-7661.45	0.45	
14603.00	90.650	270.130	6972.83	7900.47	1541.03	-7756.45	0.62	
14699.00	91.020	270.190	6971.44	7995.39	1541.30	-7852.43	0.39	
14795.00	89.080	269.330	6971.35	8090.21	1540.89	-7948.43	2.21	
14891.00	89.480	269.640	6972.56	8184.95	1540.03	-8044.42	0.53	
14987.00	89.350	269.310	6973.54	8279.70	1539.15	-8140.41	0.37	
15083.00	88.610	269.030	6975.25	8374.35	1537.76	-8236.38	0.82	
15179.00	90.620	270.440	6975.89	8469.16	1537.32	-8332.37	2.56	
15275.00	91.020	270.210	6974.52	8564.12	1537.86	-8428.36	0.48	
15370.00	91.450	270.830	6972.47	8658.13	1538.72	-8523.33	0.79	
15466.00	91.690	271.980	6969.84	8753.30	1541.08	-8619.27	1.22	
15562.00	91.010	272.900	6967.58	8848.70	1545.16	-8715.15	1.19	
15657.00	90.590	272.840	6966.25	8943.19	1549.92	-8810.02	0.45	
15753.00	90.430	273.600	6965.40	9038.75	1555.31	-8905.87	0.81	
15849.00	90.830	274.600	6964.34	9134.43	1562.17	-9001.61	1.12	
15945.00	88.800	273.500	6964.65	9230.10	1568.95	-9097.37	2.41	
16041.00	88.920	272.260	6966.56	9325.58	1573.78	-9193.22	1.30	
16137.00	88.680	270.540	6968.57	9420.77	1576.12	-9289.17	1.81	
16233.00	89.170	269.360	6970.37	9515.63	1576.04	-9385.15	1.33	
16329.00	89.510	269.230	6971.48	9610.32	1574.86	-9481.14	0.38	
16425.00	89.850	269.350	6972.02	9705.02	1573.67	-9577.13	0.38	
16521.00	90.680	269.420	6971.57	9799.74	1572.64	-9673.12	0.87	
16616.00	90.620	269.450	6970.49	9893.49	1571.70	-9768.11	0.07	
16712.00	90.860	269.570	6969.25	9988.24	1570.88	-9864.10	0.28	
16807.00	91.230	269.600	6967.52	10082.02	1570.19	-9959.08	0.39	
16872.00	91.230	269.600	6966.13	10146.18	1569.74	-10024.06	0.00	



Actual Wellpath Report

DIAMOND VALLEY EAST #12 AWP

Page 8 of 11



REFERENCE WELLPATH IDENTIFICATION			
Operator	EXTRACTION OIL & GAS	Slot	SLOT#07 DIAMOND VALLEY EAST #12(976'FSL & 155'FWL,SEC.23)
Area	COLORADO	Well	DIAMOND VALLEY EAST #12
Field	WELD COUNTY (NAD83/TRUE NORTH)	Wellbore	DIAMOND VALLEY EAST #12 AWB
Facility	SEC.23-T06N-R67W		

HOLE & CASING SECTIONS - Ref Wellbore: DIAMOND VALLEY EAST #12 AWB Ref Wellpath: DIAMOND VALLEY EAST #12 AWP									
String/Diameter	Start MD [ft]	End MD [ft]	Interval [ft]	Start TVD [ft]	End TVD [ft]	Start N/S [ft]	Start E/W [ft]	End N/S [ft]	End E/W [ft]
9.625in Casing Surface	22.00	796.00	774.00	22.00	794.48	0.00	0.00	31.22	27.74
8.75in Open Hole	796.00	7486.00	6690.00	794.48	6972.77	31.22	27.74	1479.31	-643.88
7in Casing Intermediate	22.00	7471.00	7449.00	22.00	6972.27	0.00	0.00	1478.95	-628.89
6.125in Open Hole	7471.00	16872.00	9401.00	6972.27	6966.13	1478.95	-628.89	1569.74	-10024.06



Actual Wellpath Report

DIAMOND VALLEY EAST #12 AWP

Page 9 of 11



REFERENCE WELLPATH IDENTIFICATION

Operator	EXTRACTION OIL & GAS	Slot	SLOT#07 DIAMOND VALLEY EAST #12(976'FSL & 155'FWL,SEC.23)
Area	COLORADO	Well	DIAMOND VALLEY EAST #12
Field	WELD COUNTY (NAD83/TRUE NORTH)	Wellbore	DIAMOND VALLEY EAST #12 AWB
Facility	SEC.23-T06N-R67W		

TARGETS

Name	MD [ft]	TVD [ft]	North [ft]	East [ft]	Grid East [US ft]	Grid North [US ft]	Latitude	Longitude	Shape
S 1/2 SEC.21-T06N-R67W		0.00	-32.79	0.00	3175340.24	1413879.33	40°28'04.044"N	104°52'11.280"W	polygon
S 1/2 SEC.22-T06N-R67W		0.00	-32.79	0.00	3175340.24	1413879.33	40°28'04.044"N	104°52'11.280"W	polygon
DIAMOND VALLEY EAST #12 BHL ON PLAT REV-1 (2475'FSL & 460'FWL, SEC.21)		6955.00	1546.76	-10074.51	3165255.14	1415387.18	40°28'19.632"N	104°54'21.636"W	point
DIAMOND VALLEY EAST #12 LANDING		6955.00	1497.35	-609.31	3174720.09	1415405.04	40°28'19.164"N	104°52'19.164"W	point
DIAMOND VALLEY EAST #12 BHL ON PLAT REV-2 (2475'FSL & 460'FWL, SEC.21)		6970.00	1546.76	-10074.51	3165255.14	1415387.18	40°28'19.632"N	104°54'21.636"W	point
DVE#12 LATERAL TARGET #4		6970.00	1515.69	-4121.92	3171207.58	1415398.42	40°28'19.342"N	104°53'04.614"W	point
DVE#12 LATERAL TARGET #5		6970.00	1523.62	-5641.54	3169688.00	1415395.55	40°28'19.417"N	104°53'24.277"W	point
DVE#12 LATERAL TARGET #8		6970.00	1533.96	-7621.87	3167707.72	1415391.81	40°28'19.514"N	104°53'49.901"W	point
DIAMOND VALLEY EAST #12 DRILLING CORRIDOR (60')		6975.00	0.00	0.00	3175340.01	1413912.11	40°28'04.368"N	104°52'11.280"W	polygon
DIAMOND VALLEY EAST #12 LANDING (2)		6975.00	1497.35	-609.31	3174720.09	1415405.04	40°28'19.164"N	104°52'19.164"W	point
DVE PAD HARDLINES(460'E/W)		6975.00	-32.79	0.00	3175340.24	1413879.33	40°28'04.044"N	104°52'11.280"W	polygon

TARGETS

Name	MD [ft]	TVD [ft]	North [ft]	East [ft]	Grid East [US ft]	Grid North [US ft]	Latitude	Longitude	Shape
DVE#12 LATERAL TARGET #2		6975.00	1500.13	-1141.60	3174187.82	1415404.04	40°28'19.191"N	104°52'26.051"W	point
DVE#12 LATERAL TARGET #3		6975.00	1513.18	-3641.57	3171687.91	1415399.32	40°28'19.318"N	104°52'58.399"W	point
DVE#12 LATERAL TARGET #6		6975.00	1526.13	-6121.89	3169207.66	1415394.64	40°28'19.441"N	104°53'30.492"W	point
DVE#12 LATERAL TARGET #7		6975.00	1531.45	-7141.52	3168188.06	1415392.72	40°28'19.491"N	104°53'43.685"W	point



Actual Wellpath Report

DIAMOND VALLEY EAST #12 AWP

Page 10 of 11



REFERENCE WELLPATH IDENTIFICATION			
Operator	EXTRACTION OIL & GAS	Slot	SLOT#07 DIAMOND VALLEY EAST #12(976'FSL & 155'FWL,SEC.23)
Area	COLORADO	Well	DIAMOND VALLEY EAST #12
Field	WELD COUNTY (NAD83/TRUE NORTH)	Wellbore	DIAMOND VALLEY EAST #12 AWB
Facility	SEC.23-T06N-R67W		

WELLPATH COMPOSITION - Ref Wellbore: DIAMOND VALLEY EAST #12 AWB Ref Wellpath: DIAMOND VALLEY EAST #12 AWP				
Start MD [ft]	End MD [ft]	Positional Uncertainty Model	Log Name/Comment	Wellbore
22.00	762.00	NaviTrak (Standard)	INTEQ/NAVITRAK MWD 13-1/2" <275-762>	DIAMOND VALLEY EAST #12 AWB
762.00	7421.00	NaviTrak (Standard)	INTEQ/NAVITRAK MWD 8-3/4" <911-7421>	DIAMOND VALLEY EAST #12 AWB
7421.00	16807.00	NaviTrak (Standard)	INTEQ/NAVITRAK MWD 6-1/8" <7531-16807>	DIAMOND VALLEY EAST #12 AWB
16807.00	16872.00	Blind Drilling (std)	Projection to bit	DIAMOND VALLEY EAST #12 AWB



Actual Wellpath Report

DIAMOND VALLEY EAST #12 AWP

Page 11 of 11



REFERENCE WELLPATH IDENTIFICATION			
Operator	EXTRACTION OIL & GAS	Slot	SLOT#07 DIAMOND VALLEY EAST #12(976'FSL & 155'FWL,SEC.23)
Area	COLORADO	Well	DIAMOND VALLEY EAST #12
Field	WELD COUNTY (NAD83/TRUE NORTH)	Wellbore	DIAMOND VALLEY EAST #12 AWB
Facility	SEC.23-T06N-R67W		

WELLPATH COMMENTS				
MD [ft]	Inclination [°]	Azimuth [°]	TVD [ft]	Comment
22.00	0.000	27.160	22.00	TIE ON
13359.00	90.580	269.000	6979.06	LAST BHI MWD SURVEY
13424.00	90.833	269.582	6978.26	PTB