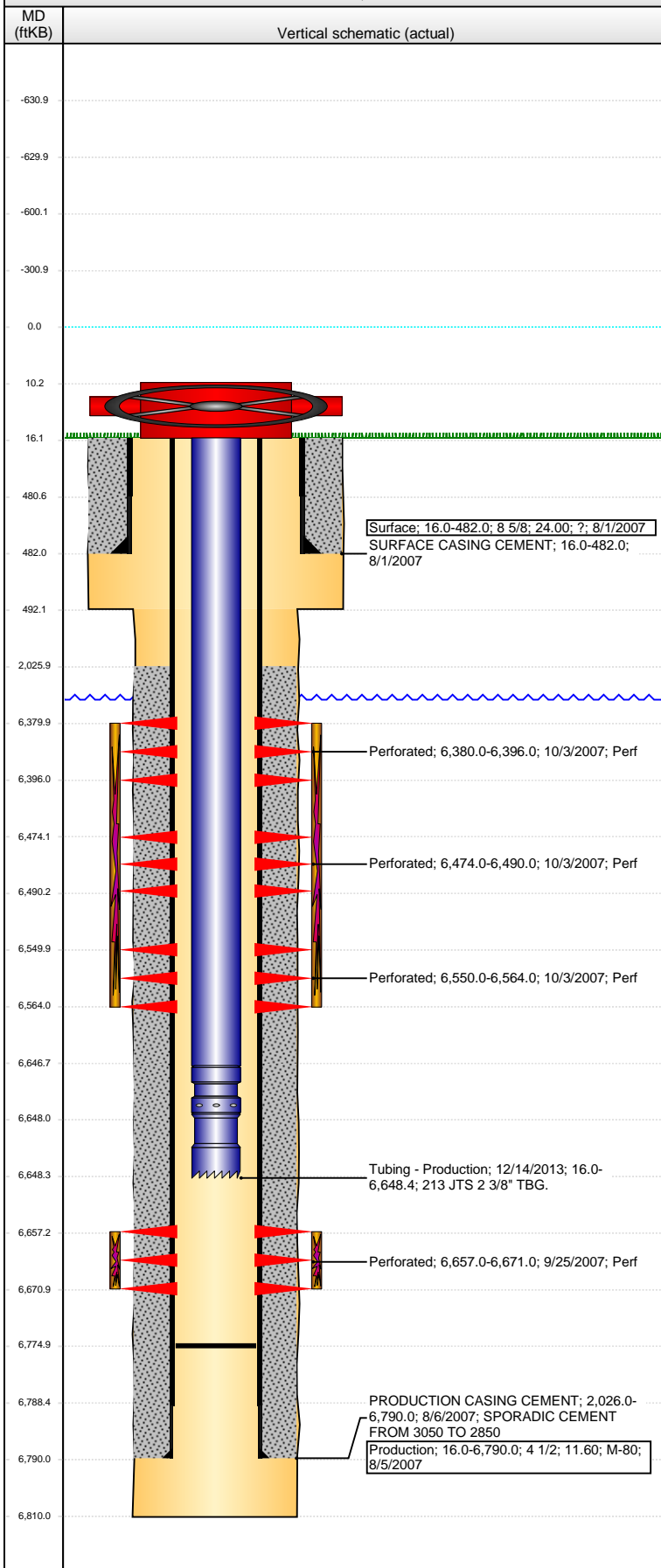


Well Name: FERGUSON B24-30

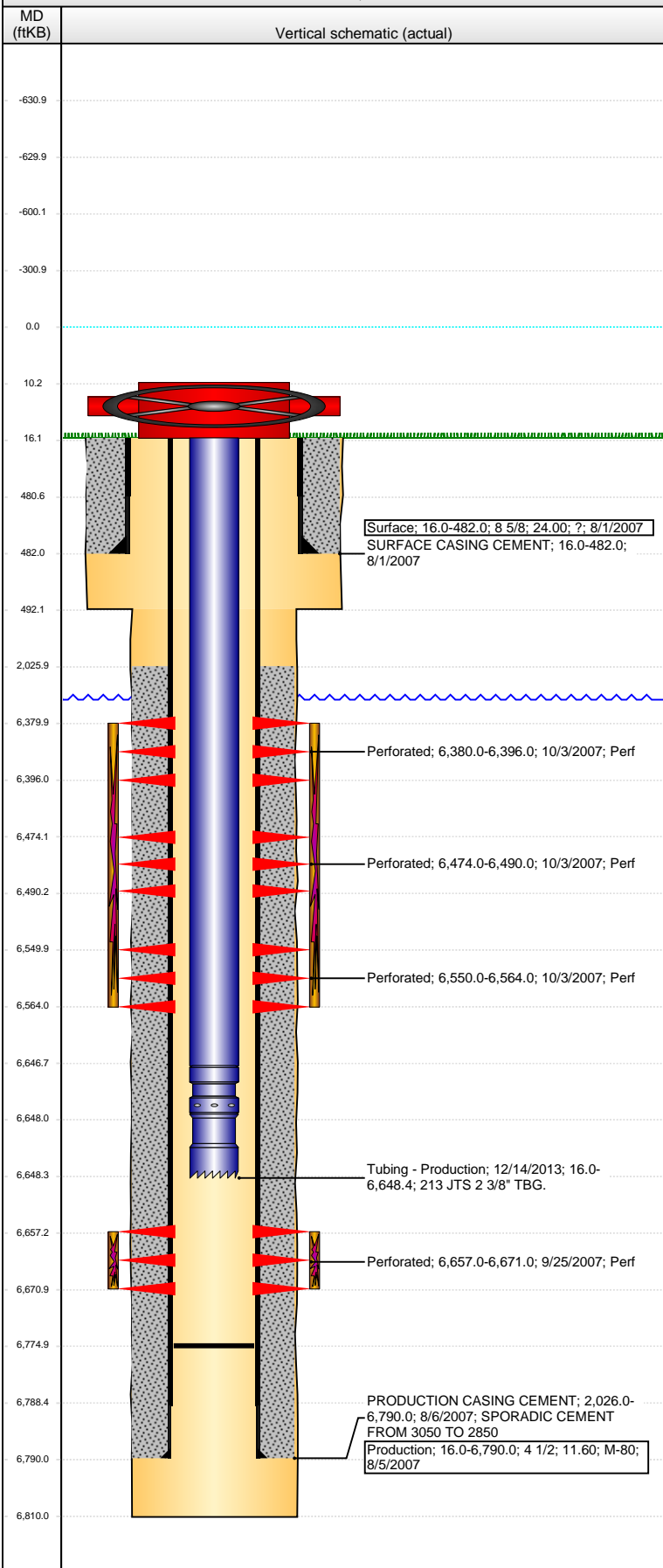
VERTICAL - ORIGINAL HOLE, 1/22/2015 9:11:23 AM



Well Header									
API		Business Unit		District		Well Config			
05-123-25119		DJ BASIN		15		VERTICAL			
Original KB Elevation (ft)		KB - GL / MSL (ftKB)		Spud Date		P & A Date			
4,582.00		16.00		7/31/2007					
Comment									
Directions To Well									
388 & 59, S 4/10 INTO 3 WELL PAD EAST WELL OF 3 WELL PAD									
Congressional Location									
Quarter 1	Quarter 2	Quarter 3	Quarter 4	Section	Township	Twnshp N...	Range	Rng E/W Dir	
		NE	NE	23	5 N		64	W	
Bottom Hole Location									
North-South Distance (ft)		From N or S Line		East-West Distance (ft)		From E or W Line			
Plug Back Total Depths									
Date	Depth (ftKB)	Method		Com					
8/5/2007	6,773.0	CASING TALLY		FLOAT COLLAR ON CASING TALLY					
8/23/2007	6,754.0	CASED HOLE LOG		DEPTH LOGGER ON CBL					
12/12/2007	6,773.0	TAG		CLEAN OUT TO LAND TUBING					
7/18/2013	6,778.0	TAG		TAG W/ PROD TBG PRIOR TO WORK OVER					
12/13/2013	6,775.0	TAG		C/O DOWN TO 6775' KB					
Wellbore Sections									
Section Des		Size (in)		Act Top, MD (ftKB)		Act Btm, MD (ftKB)			
SURFACE		12 1/4		16.0		492.0			
PRODUCTION		7 7/8		492.0		6,810.0			
Zone Statuses									
Zone Name	Status Date	Status		Job					
CODELL	10/8/2007	PR		DRILLING/COMPLETION - ORIGINAL, 7/31/2007 00:00					
NIOBRARA	10/8/2007	PR		DRILLING/COMPLETION - ORIGINAL, 7/31/2007 00:00					
Casing Strings									
Surface, 482.0ftKB									
Casing Description	Run Date	OD (in)	Wt/Len (l...)	Grade	Top, MD (ft...)	MD (ftKB)			
Surface	8/1/2007	8 5/8	24.00	?	16.0	482.0			
Production, 6,790.0ftKB									
Casing Description	Run Date	OD (in)	Wt/Len (l...)	Grade	Top, MD (ft...)	MD (ftKB)			
Production	8/5/2007	4 1/2	11.60	M-80	16.0	6,790.0			
Cement									
Description					Top Depth (ftKB)	Bottom Depth (ftKB)			
SURFACE CASING CEMENT					16.0	482.0			
Description					Top Depth (ftKB)	Bottom Depth (ftKB)			
PRODUCTION CASING CEMENT					2,026.0	6,790.0			
Tubing Strings									
Tubing Description	Run Date	String...	ID (in)	Wt (lb/ft)	Grade	Len (ft)	Set De...		
Tubing	12/12/2007	2 3/8	1.995	4.70	J-55	6,631.00			
Tubing - Production	12/14/2013	2 3/8	1.995	4.70	J-55	6,632.45			
Tubing Components									
Item Des	OD (in)	Wt (lb/ft)	Grade	Jts	Len (ft)	Btm (ftKB)	Btm (TVD) (ftKB)		
EUE 8rd Tubing	2 3/8	4.70	J-55	213	6,630.75	6,646.8			
Pump Seating Nipple	2 3/8	1.10		1	1.10	6,647.9			
Notched collar	2 3/8			1	0.60	6,648.5			
Perforation Data									
Zone	Bnch/St g	Entered Shot Total	Top (ftKB)	Btm (ftKB)	Date				
NIOBRARA, ORIGINAL HOLE	A	64	6,380.00	6,396.00	10/3/2007				
NIOBRARA, ORIGINAL HOLE	B	64	6,474.00	6,490.00	10/3/2007				
NIOBRARA, ORIGINAL HOLE	C	56	6,550.00	6,564.00	10/3/2007				
CODELL, ORIGINAL HOLE		56	6,657.00	6,671.00	9/25/2007				

Well Name: FERGUSON B24-30

VERTICAL - ORIGINAL HOLE, 1/22/2015 9:11:24 AM



Stimulations & Treatments			
Date	Zone	Primary Job Type	
10/3/2007	NIOBRARA, ORIGINAL HOLE	DRILLING/COMPLETION - ORIGINAL	
Technical Result		Tech Result Details	Tech Result Note
Comment			
Date	Zone	Primary Job Type	
10/3/2007	CODELL, ORIGINAL HOLE	DRILLING/COMPLETION - ORIGINAL	
Technical Result		Tech Result Details	Tech Result Note
Comment			
Other In Hole			
Run Date	Des	OD (in)	Top (ftKB) Btm (ftKB)
Logs			
Date	Type	Top, MD (ftKB)	Btm, MD (ftKB)
8/6/2007	COMPENSATED DENSITY	2,400.0	6,783.0
8/6/2007	INDUCTION	482.0	6,803.0
8/23/2007	CBL/CCL/GR	1,920.0	6,747.0