

1 : 600 / 1 : 240

WELL INFORMATION					
MWD Run Number	100	200			
Date run completed	27-Aug-14	28-Aug-14			
Rig Bit Number	2	3			
Bit Size (in)	8.750	8.750			
Tool Nominal OD (in)	6.880	6.880			
Log Start Depth (TVD, ft)	644.00	5,743.61			
Log End Depth (TVD, ft)	5,743.61	7,091.92			
Drill or Wipe	Drill	Drill			
Drill/Wipe Start Date and Time	15-Aug-14 00:06	27-Aug-14 13:17			
Drill/Wipe End Date and Time	15-Aug-14 00:06	28-Aug-14 03:55			
Min Inc (deg) @ Depth (TVD, ft)	0.13 @ 1,090.99	8.04 @ 5,776.29			
Max Inc (deg) @ Depth (TVD, ft)	11.42 @ 4,281.61	82.28 @ 7,086.83			
Bit TFA(in2) / Bit Type	0.91 / PDC	1.74 / PDC			
Flow Rate (gpm)	562.45	585.00			
Max AV (fpm) / CV (fpm) @ MWD	NA / NA	NA / NA			
Fluid Type	Fresh Water Gel	Fresh Water Gel			
Density (ppg) / Viscosity (spqt)	9.00 / 36.00	10.50 / 37.00			
Filtrate CL (ppm)	1,500.00	1,500.00			
pH / Fluid Loss (mptm)	9.40 / 9	9.20 / 8			
PV (cP) / YP (lbf2)	8 / 10.00	8 / 10.00			
% Solids / % Sand	4.20 / 0.40	10.00 / 0.60			
% Oil / Oil:Water Ratio	1.00 / NA	1.00 / NA			
Rm @ Measured Temp (degF)	NA @ NA	NA @ NA			
Rmf @ Measured Temp (degF)	NA @ NA	NA @ NA			
Rmc @ Measured Temp (degF)	NA @ NA	NA @ NA			
Max Tool Temp (in F) / S	145.00 / PDM	170.00 / PDM			

Max Tool Temp (degF) / Source	145.90 / PCM	179.90 / PCM			
Rm @ Max Tool Temp (degF)	NA @ 145.90	NA @ 179.90			
Lead MWD Engineer	Kyle Wass	Kyle Wass			
Customer Representative	Jim Turner	Jim Turner			

SENSOR INFORMATION

Downhole Processor Information

Tool Type	PCM	PCM			
Software Version	5.93	5.93			
Sub Serial Number	241717	241717			
Insert Serial Number	11680785	11680785			
Date and Time Initialized	25-Aug-14 15:31	25-Aug-14 15:31			
Date and Time Read	28-Aug-14 10:56	28-Aug-14 10:56			
ECMB SW Version	N/A	N/A			

Directional Sensor Information

Tool Type	PCDC	PCDC			
Distance From Bit (ft)	57.00	54.00			
Software Version	6.21	6.21			
Sub Serial Number	241717	241717			
Sonde Serial Number	11297590	11297590			
Sensor ID Number	N/A	N/A			
Toolface Offset (deg)	172.27	62.93			

Gamma Ray Sensor Information

Tool Type	PCG	PCG			
Distance From Bit (ft)	49.42	49.66			
Recorded Sample Period (sec)	10	10			
Software Version	8.15	8.15			
Sub Serial Number	241717	241717			
Insert/Sonde Serial Number	11681002	11681002			

REMARKS

1. All depths are calibrated to driller's pipe tally and are true vertical depth from the Drill Floor.
2. No depth corrections have been made for pipe stretch or compression.
3. Critical annular velocities are calculated using the "Power Law" model for water based fluids and the "Brigham Plastic" model for oil and synthetic based fluids.
4. All data presented is recorded data unless otherwise specified.
5. The following smoothing parameters have been applied to the data:
1: 600 Log
PGRC (Gamma CG) and ROPA (Average Rate of Penetration)
Interval Resolution: 1.0 ft

WARRANTY

HALLIBURTON WILL USE ITS BEST EFFORTS TO FURNISH CUSTOMERS WITH ACCURATE INFORMATION AND INTERPRETATIONS

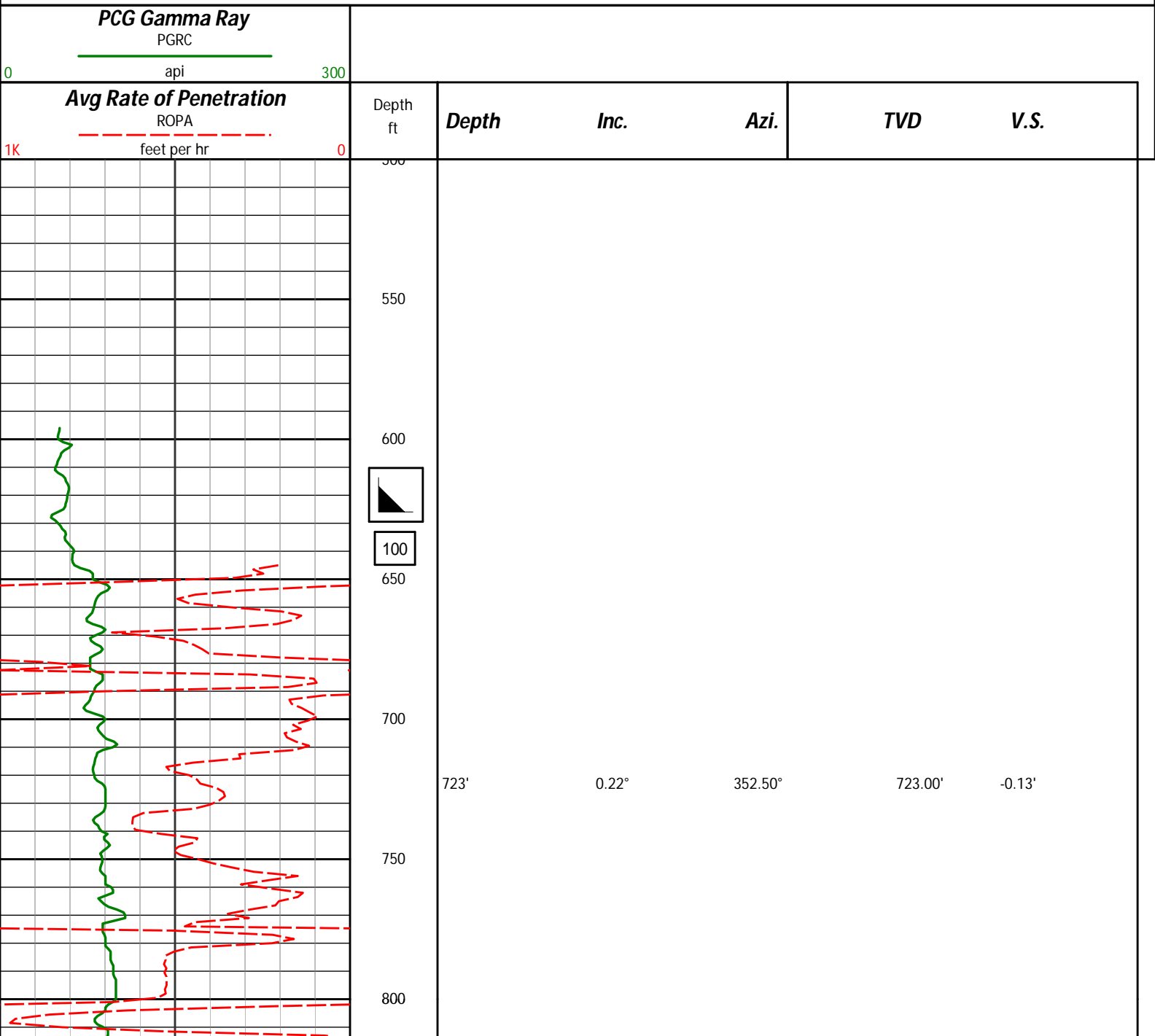
THAT ARE PART OF, AND INCIDENT TO, THE SERVICES PROVIDED. HOWEVER, HALLIBURTON CANNOT AND DOES NOT WARRANT THE ACCURACY OR CORRECTNESS OF SUCH INFORMATION AND INTERPRETATIONS. UNDER NO CIRCUMSTANCES SHOULD ANY SUCH INFORMATION OR INTERPRETATION BE RELIED UPON AS THE SOLE BASIS FOR ANY DRILLING, COMPLETION, PRODUCTION, OR FINANCIAL DECISION OR ANY PROCEDURE INVOLVING ANY RISK TO THE SAFETY OF ANY DRILLING VENTURE, DRILLING RIG OR ITS CREW OR ANY OTHER THIRD PARTY. THE CUSTOMER HAS FULL RESPONSIBILITY FOR ALL DRILLING, COMPLETION AND PRODUCTION OPERATION. HALLIBURTON MAKES NO REPRESENTATIONS OR WARRANTIES, EITHER EXPRESSED OR IMPLIED, INCLUDING, BUT NOT LIMITED TO, THE IMPLIED WARRANTIES OF MERCHANTABILITY OR FITNESS FOR A PARTICULAR PURPOSE, WITH RESPECT TO THE SERVICES RENDERED. IN NO EVENT WILL HALLIBURTON BE LIABLE FOR FAILURE TO OBTAIN ANY PARTICULAR RESULTS OR FOR ANY DAMAGES, INCLUDING, BUT NOT LIMITED TO, INDIRECT, SPECIAL OR CONSEQUENTIAL DAMAGES, RESULTING FROM THE USE OF ANY INFORMATION OR INTERPRETATION PROVIDED BY HALLIBURTON.

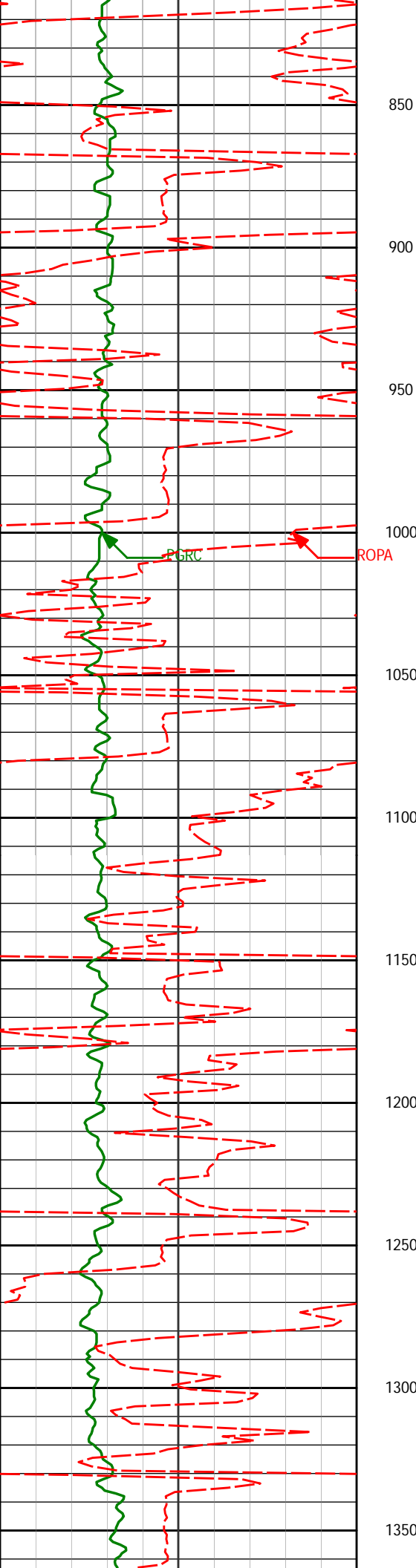
HALLIBURTON

Sperry Drilling Services

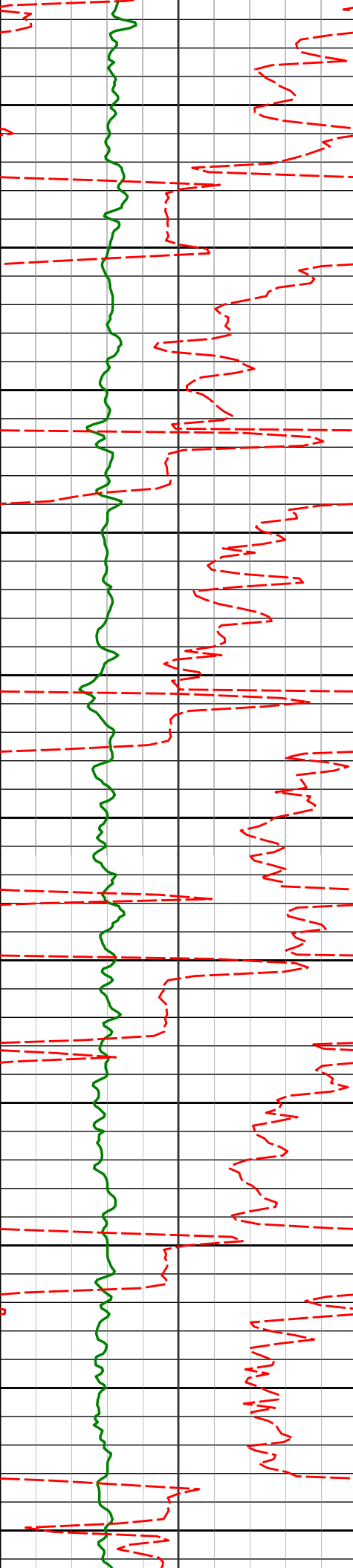
TVD Correlation Log 1:600

Noble Energy
Shable K08-69HN
H&P 321
Sec. 7-T4N-R66W

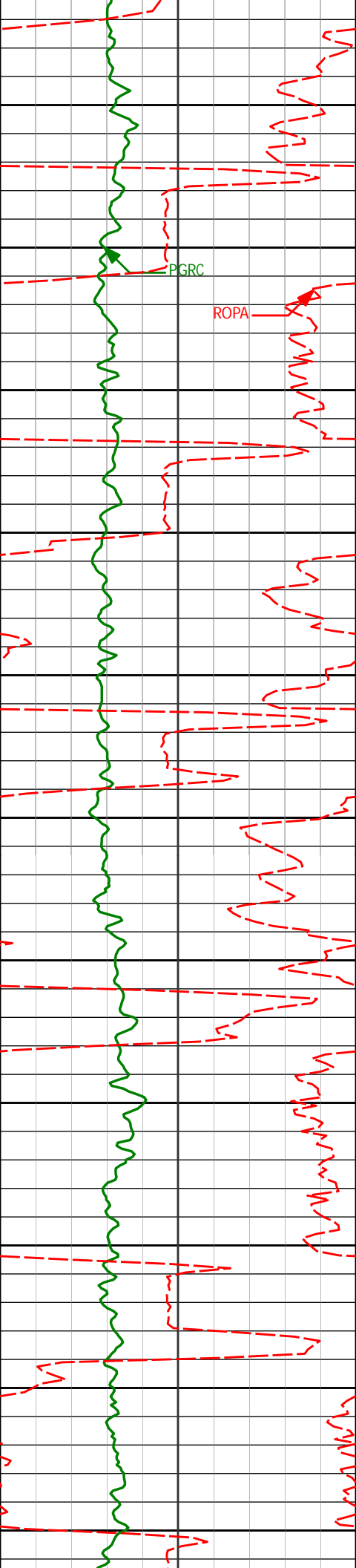




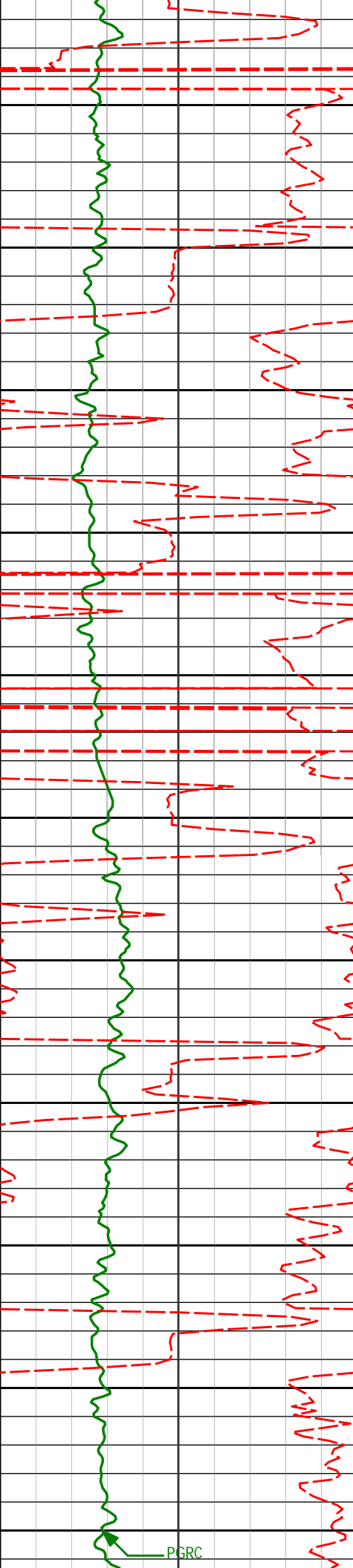
814	0.69	310.81	814.00	-0.55
907'	0.51°	315.63°	906.99'	-1.24'
999'	0.49°	243.37°	998.99'	-1.87'
1091'	0.13°	222.75°	1090.99'	-2.30'
1183'	0.18°	328.07°	1182.99'	-2.45'
1274'	0.22°	312.76°	1273.99'	-2.64'



1367'	0.68°	307.20°	1366.98'	-3.20'
1400				
1450				
1458'	0.75°	294.17°	1457.98'	-4.15'
1500				
1550				
1551'	0.96°	288.05°	1550.96'	-5.42'
1600				
1643'	0.91°	282.89°	1642.95'	-6.85'
1650				
1700				
1736'	0.70°	307.55°	1735.94'	-8.00'
1750				
1800				
1828'	1.05°	327.99°	1827.93'	-8.86'
1850				
1900				

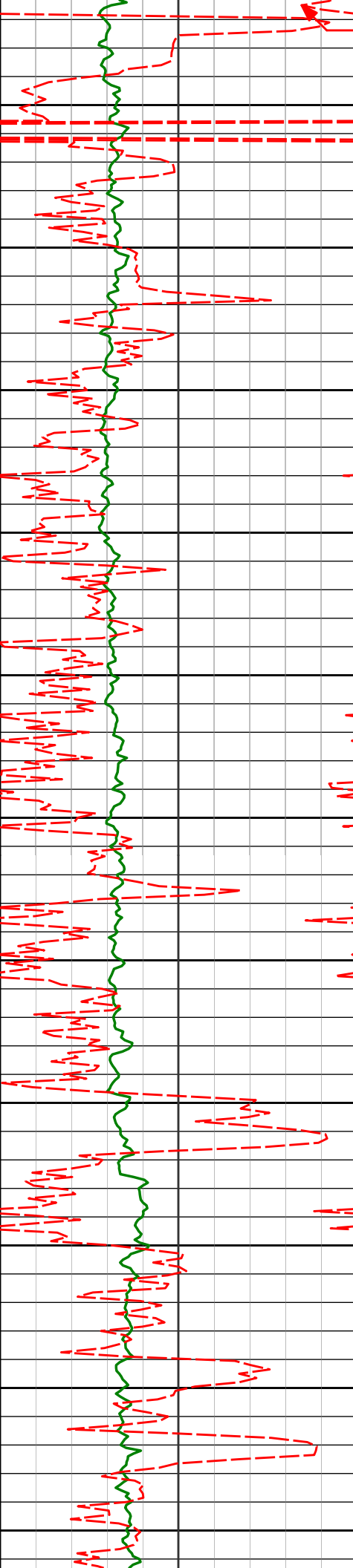


1920'	0.96°	337.00°	1919.92'	-9.55'
1950				
2000				
2015'	1.07°	358.10°	2014.90'	-9.83'
2050				
2100				
2110'	1.06°	348.78°	2109.89'	-9.97'
2150				
2200				
2204'	1.31°	347.76°	2203.87'	-10.29'
2250				
2300				
2299'	1.91°	168.55°	2298.85'	-10.23'
2350				
2394'	1.20°	157.27°	2393.82'	-9.62'
2400				
2450				



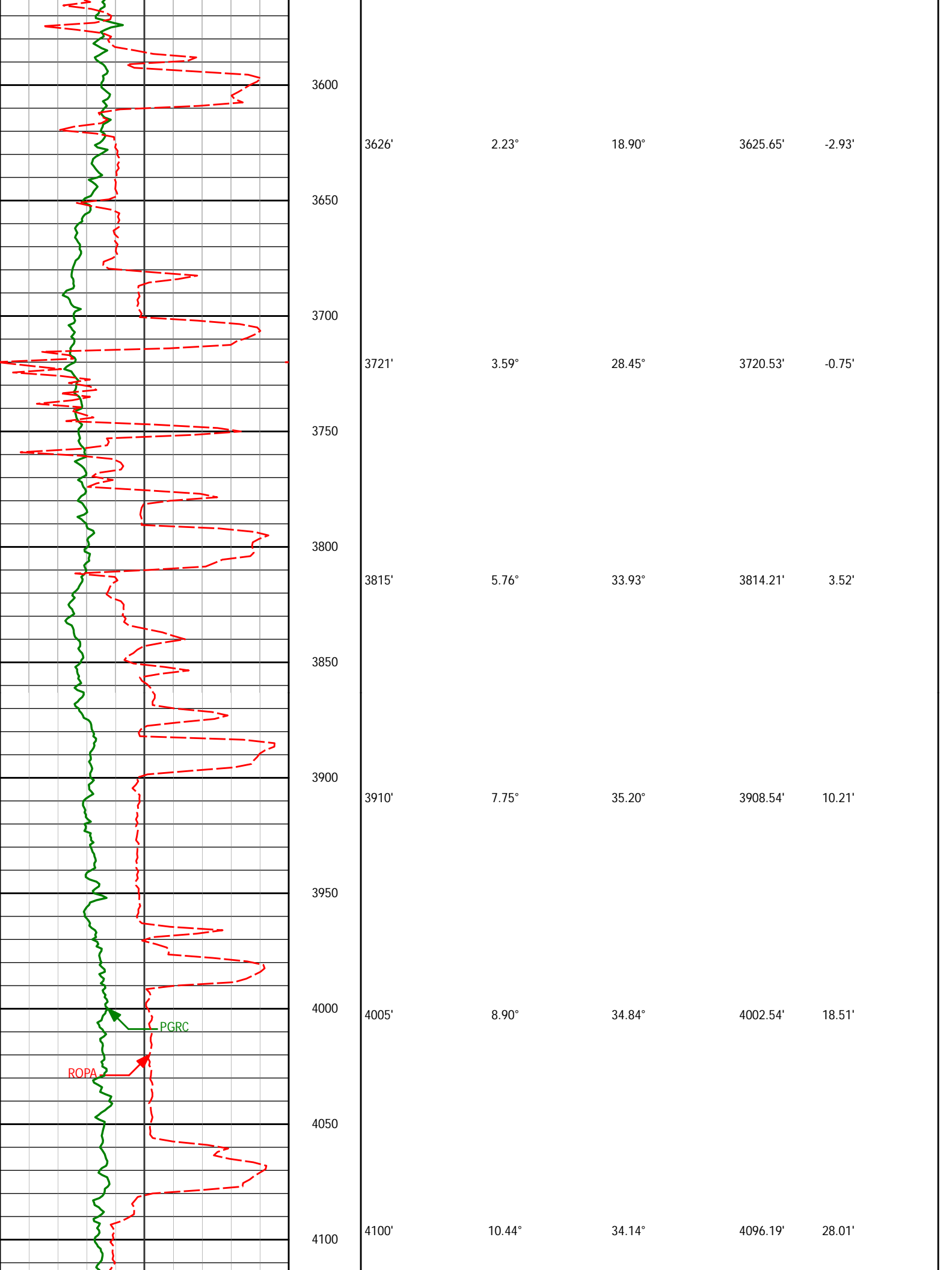
2489'	0.69°	64.22°	2488.81'	-8.75'
2500				
2550				
2584'	0.71°	45.38°	2583.80'	-7.79'
2600				
2650				
2679'	0.80°	49.11°	2678.79'	-6.84'
2700				
2750				
2773'	0.69°	144.32°	2772.79'	-6.01'
2800				
2850				
2868'	1.06°	152.32°	2867.78'	-5.32'
2900				
2950				
2963'	1.05°	158.81°	2962.76'	-4.65'

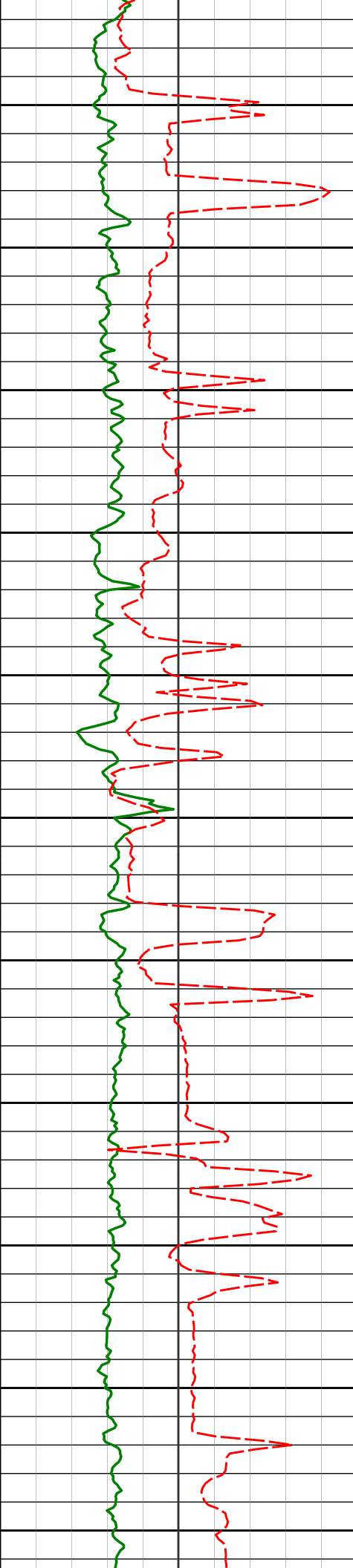
PGRC



ROPA

3058'	1.11°	154.54°	3057.74'	-4.01'
3153'	1.28°	165.16°	3152.72'	-3.41'
3247'	0.93°	160.26°	3246.71'	-2.94'
3342'	1.09°	165.47°	3341.69'	-2.52'
3437'	0.84°	200.99°	3436.68'	-2.60'
3531'	0.44°	266.05°	3530.67'	-3.23'





4150

4194'

11.39°

33.81°

4188.49'

38.50'

4200

4250

4289'

11.42°

32.29°

4281.61'

49.31'

4300

4350

4384'

10.91°

31.37°

4374.81'

59.59'

4400

4450

4479'

10.86°

30.69°

4468.10'

69.39'

4500

4550

4573'

10.21°

29.80°

4560.52'

78.59'

4600

4650

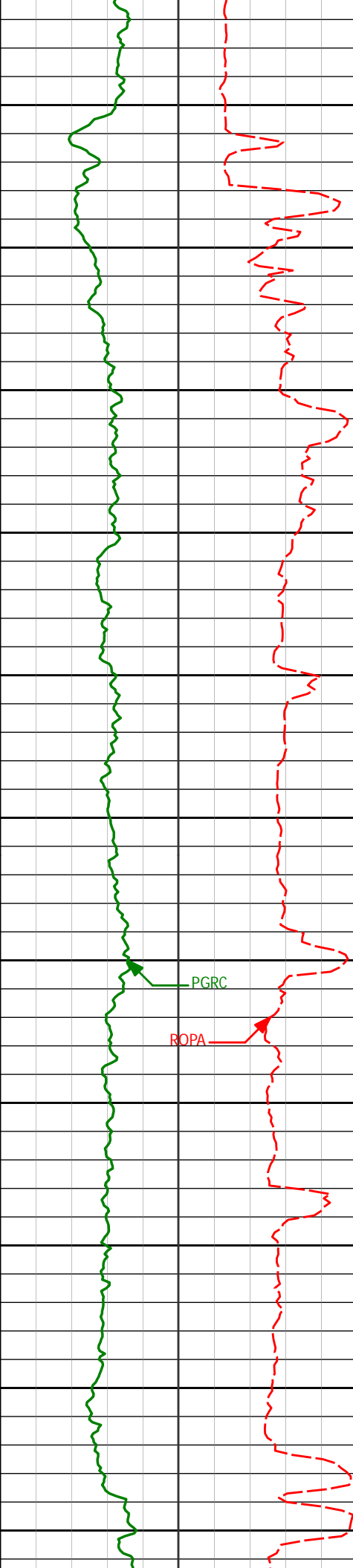
4668'

9.51°

26.84°

4654.12'

86.84'



4700

4750

4800

4850

4900

4950

5000

5050

5100

5150

5200

4763'

4857'

4952'

5047'

5142'

9.70°

10.74°

11.09°

9.45°

8.72°

25.12°

27.51°

27.75°

24.75°

22.32°

4747.79'

4840.29'

4933.57'

5027.05'

5120.86'

94.30'

102.26'

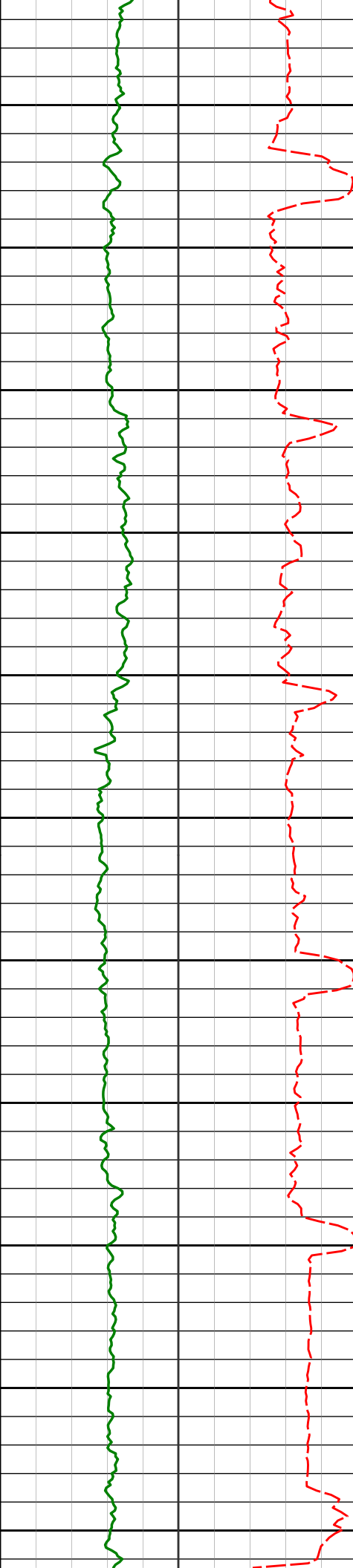
111.18'

119.25'

125.76'

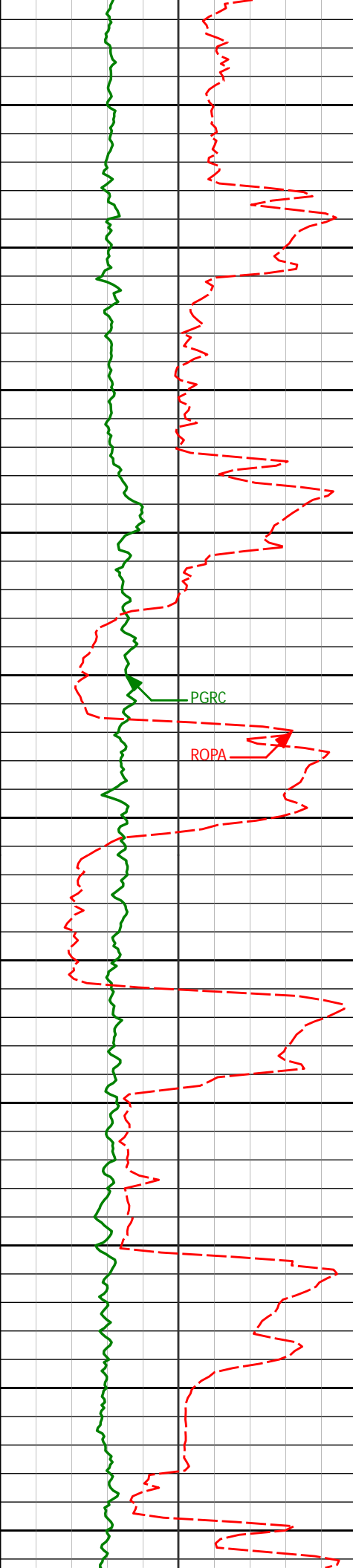
PGRC

ROPA

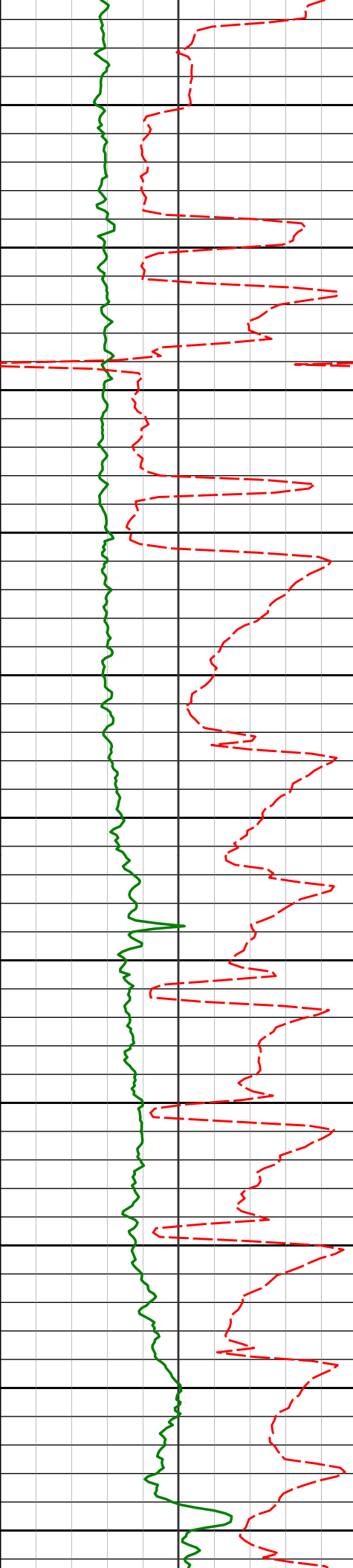


	5236	9.22°	25.02°	5213.71'	132.14'
5250					
5300	5331'	9.87°	30.14°	5307.39'	139.95'
5350					
5400	5426'	8.94°	28.43°	5401.12'	148.05'
5450					
5500	5521'	8.22°	28.83°	5495.05'	155.29'
5550					
5600	5616'	8.22°	25.20°	5589.08'	161.90'
5650					
5700	5710'	7.64°	25.72°	5682.18'	167.90'
5750					

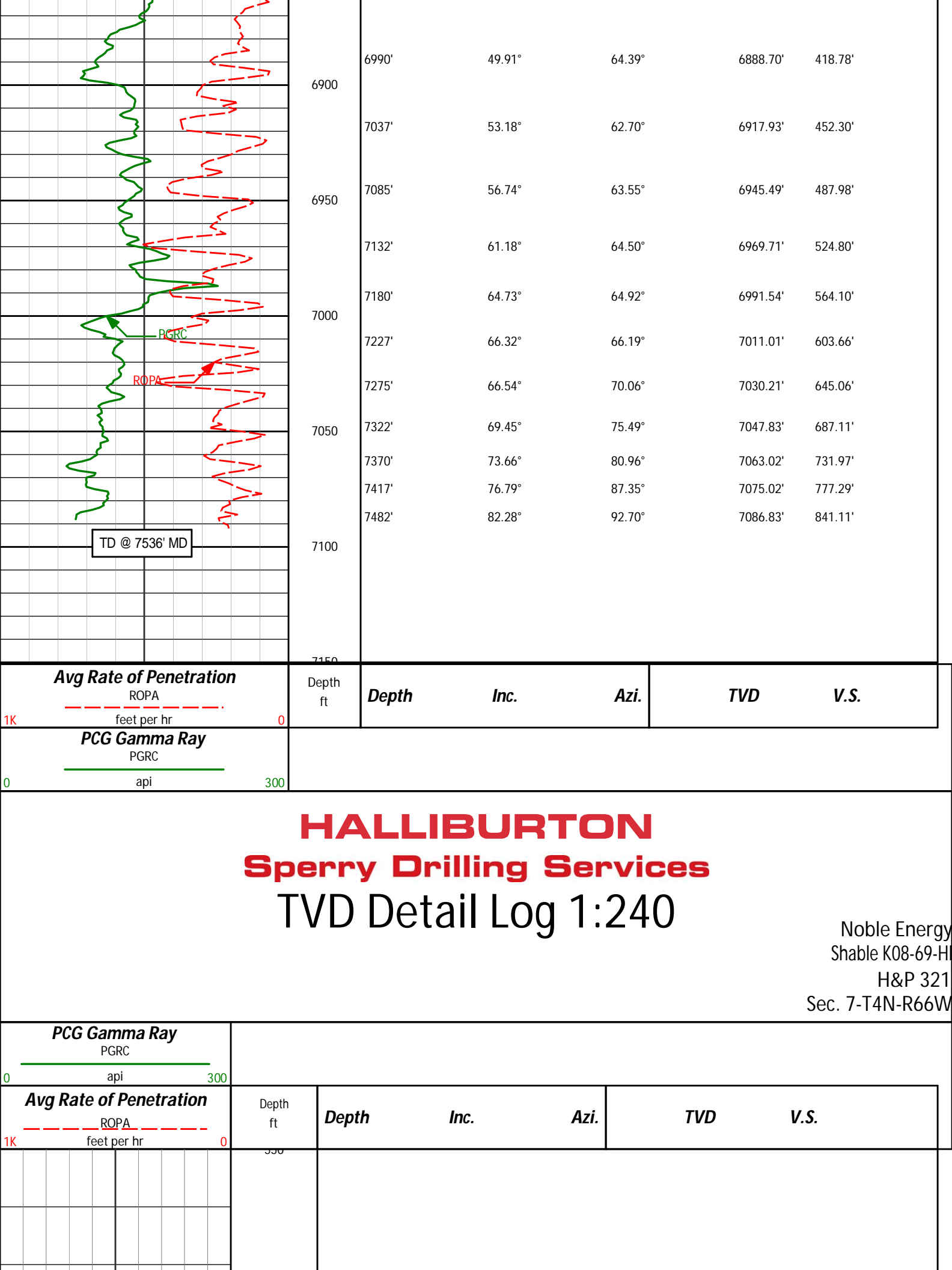
200

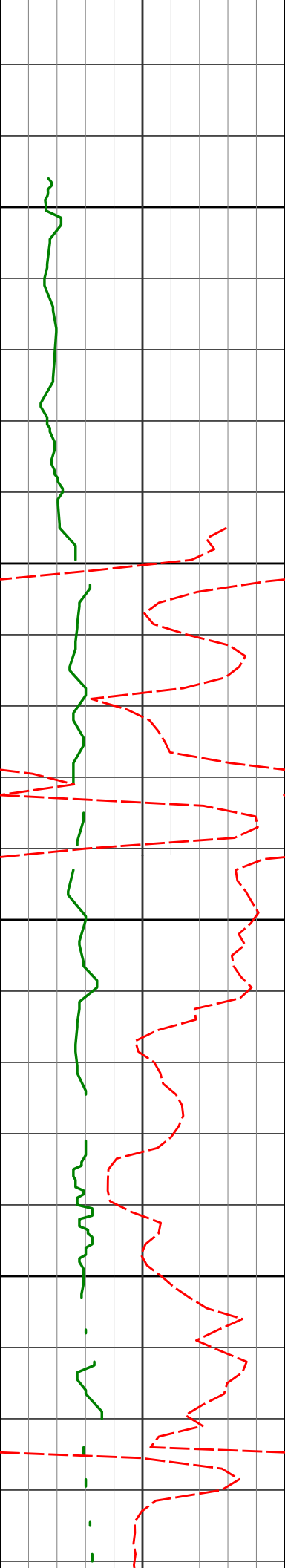


5805'	8.04°	25.32°	5776.29'	173.91'
5800				
5850				
5900'	8.87°	34.05°	5870.26'	181.29'
5900				
5950				
5995'	9.54°	30.73°	5964.04'	189.88'
6000				
6089'	10.08°	33.71°	6056.66'	198.92'
6100				
6184'	10.53°	30.00°	6150.13'	208.40'
6200				
6279'	11.45°	27.22°	6243.39'	217.63'
6300				



	6374'	10.60°	22.82°	6336.64'	225.93'
6350					
6400					
6450	6493'	9.01°	23.86°	6453.89'	234.63'
6500					
	6564'	10.15°	31.51°	6523.91'	240.53'
6550					
	6612'	15.49°	42.27°	6570.70'	247.36'
6600					
	6658'	19.82°	49.04°	6614.53'	257.73'
6650					
	6706'	23.40°	52.69°	6659.15'	271.87'
6700					
	6753'	26.16°	57.72°	6701.82'	288.45'
6750					
	6801'	29.54°	61.29°	6744.26'	308.19'
6800					
	6848'	34.24°	63.62°	6784.15'	330.62'
6850					
	6896'	39.62°	65.67°	6822.51'	357.12'
	6942'	45.45°	66.58°	6856.39'	385.99'





600



Run 100

650

700

750

723'

0.22°

352.50°

723.00'

-0.13'



800

814'

0.69°

310.81°

814.00'

-0.55'

850

900

907'

0.51°

315.63°

906.99'

-1.24'

950

1000

999'

0.49°

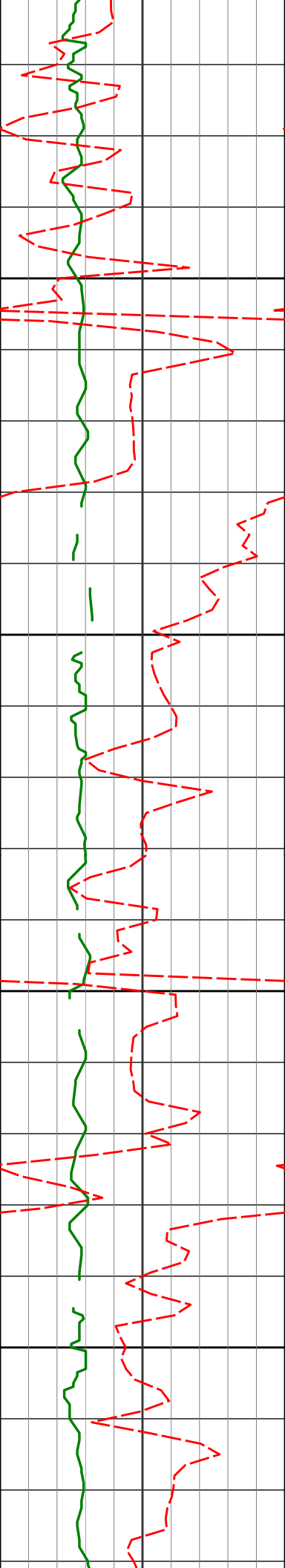
243.37°

998.99'

-1.87'

PGRC

ROPA



1050

1091'

0.13°

222.75°

1090.99'

-2.30'

1100

1150

1183'

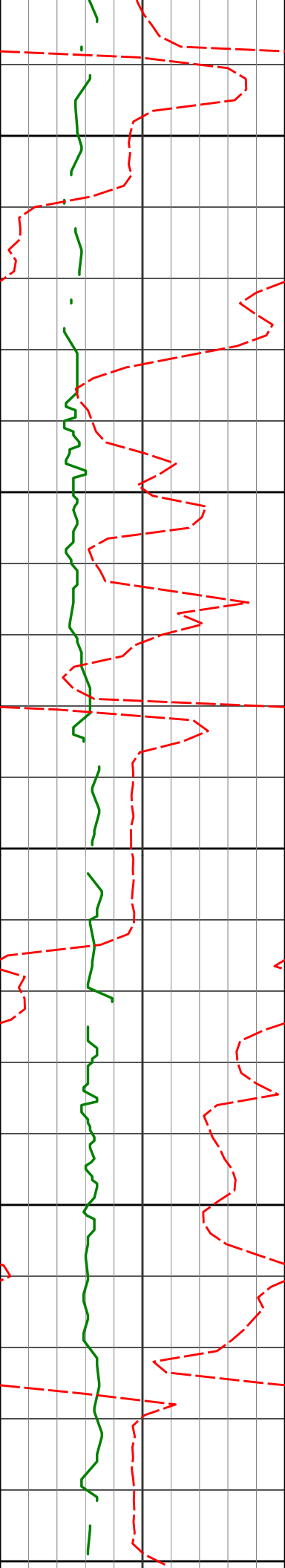
0.18°

328.07°

1182.99'

-2.45'

1200



1250

1300

1350

1400

1450

1274'

0.22°

312.76°

1273.99'

-2.64'

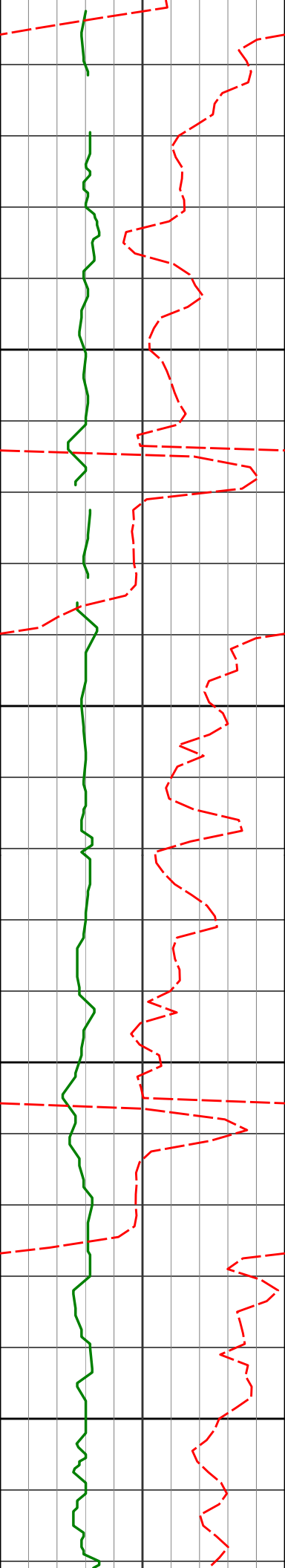
1367'

0.68°

307.20°

1366.98'

-3.20'



1458'

0.75°

294.17°

1457.98'

-4.15'

1500

1550

1551'

0.96°

288.05°

1550.96'

-5.42'

1600

1650

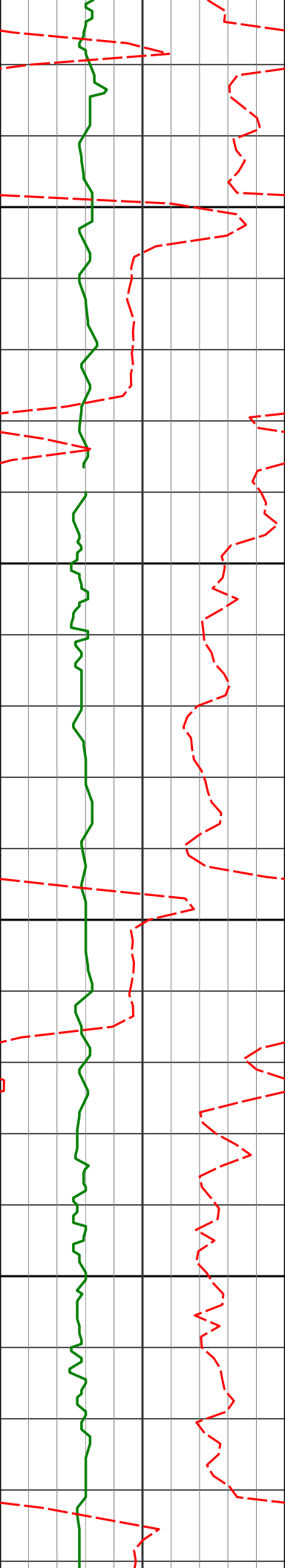
1643'

0.91°

282.89°

1642.95'

-6.85'



1700

1750

1800

1850

1736'

0.70°

307.55°

1735.94'

-8.00'

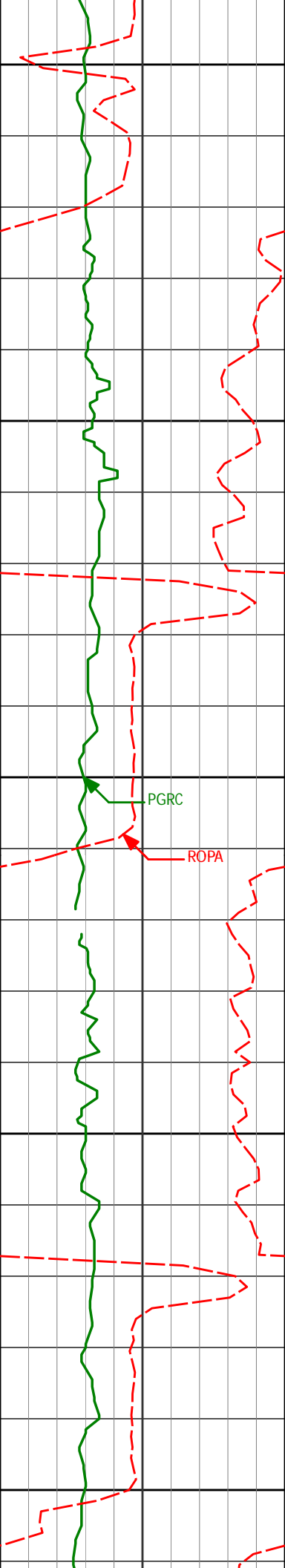
1828'

1.05°

327.99°

1827.93'

-8.86'



1900

1950

2000

2050

2100

1920'

0.96°

337.00°

1919.92'

-9.55'

2015'

1.07°

358.10°

2014.90'

-9.83'

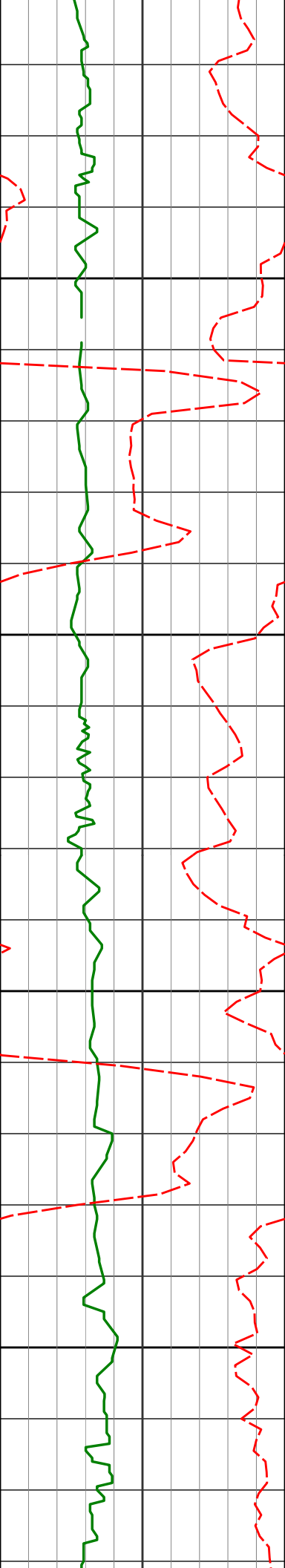
2110'

1.06°

348.78°

2109.89'

-9.97'



2150

2200

2250

2300

2204'

1.31°

347.76°

2203.87'

-10.29'

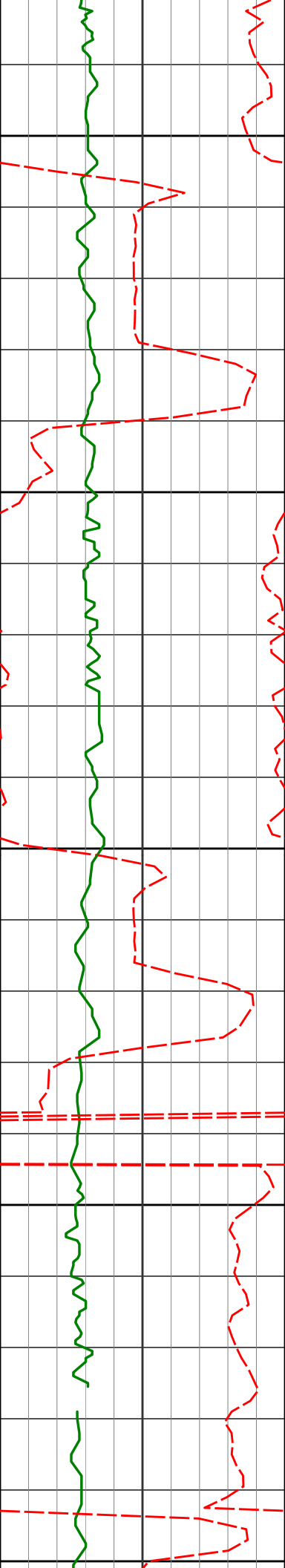
2299'

1.91°

168.55°

2298.85'

-10.23'



2350

2394'

1.20°

157.27°

2393.82'

-9.62'

2400

2450

2489'

0.69°

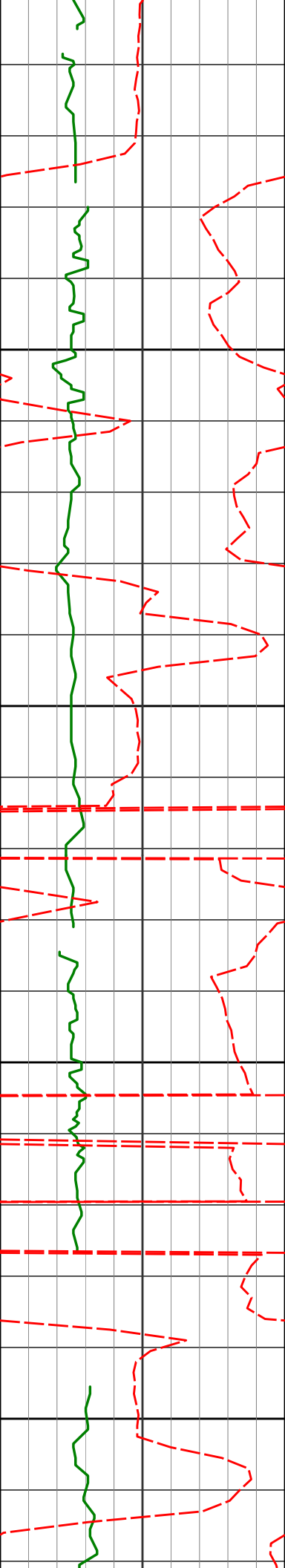
64.22°

2488.81'

-8.75'

2500

2550



2584'

0.71°

45.38°

2583.80'

-7.79'

2600

2650

2700

2750

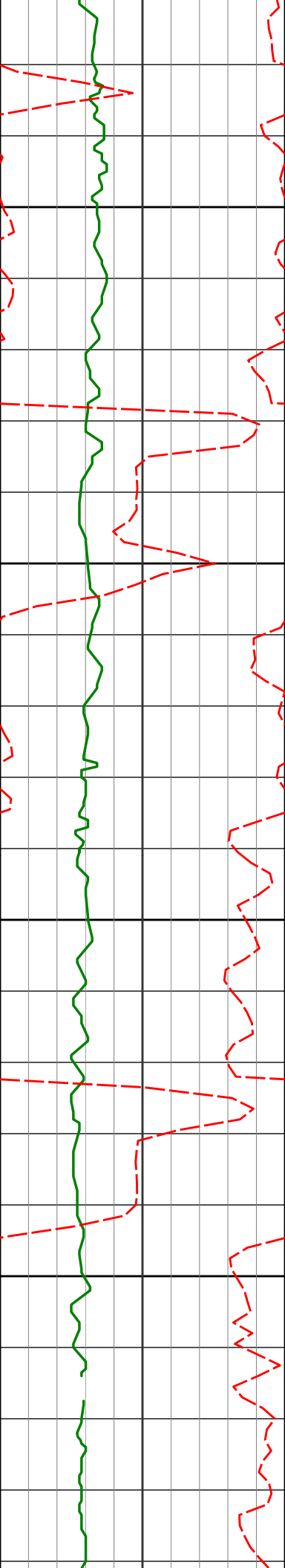
2679'

0.80°

49.11°

2678.79'

-6.84'



2800

2850

2900

2950

2773'

0.69°

144.32°

2772.79'

-6.01'

2868'

1.06°

152.32°

2867.78'

-5.32'

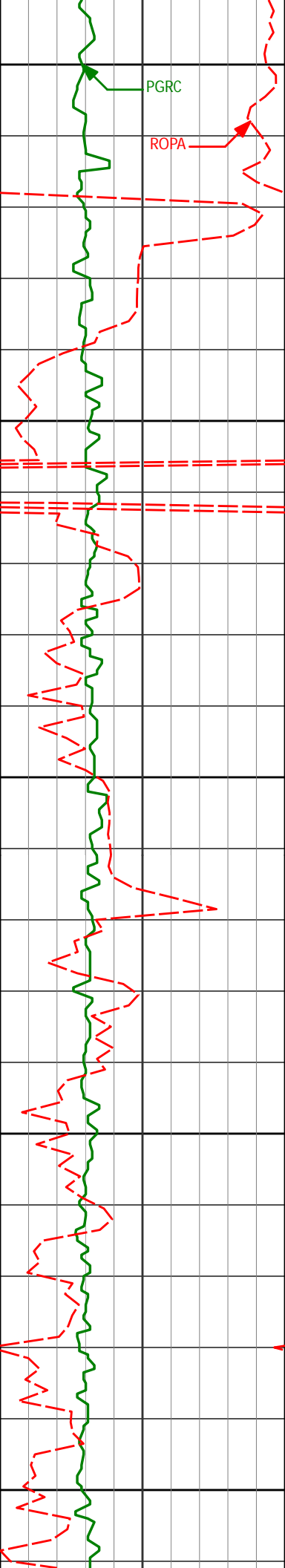
2963'

1.05°

158.81°

2962.76'

-4.65'



3000

PGRC

ROPA

3050

3058'

1.11°

154.54°

3057.74'

-4.01'

3100

3150

3153'

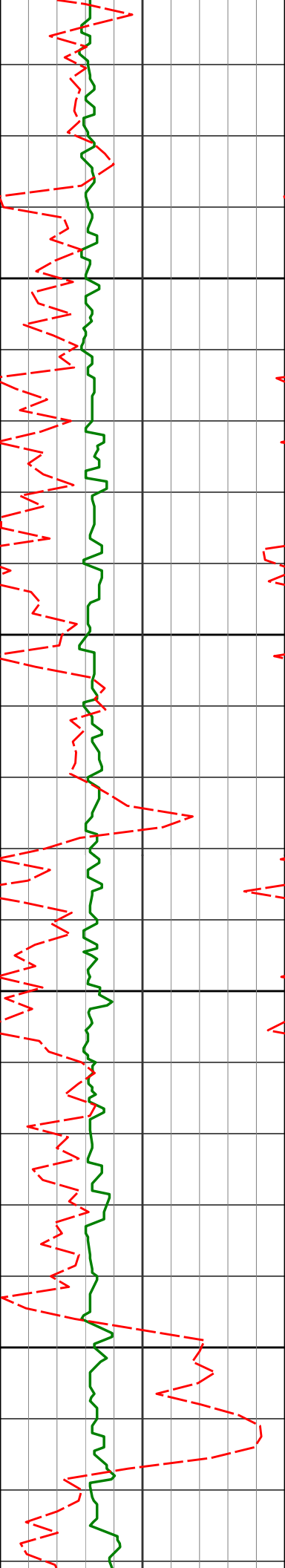
1.28°

165.16°

3152.72'

-3.41'

3200



3250

3300

3350

3400

3247'

0.93°

160.26°

3246.71'

-2.94'

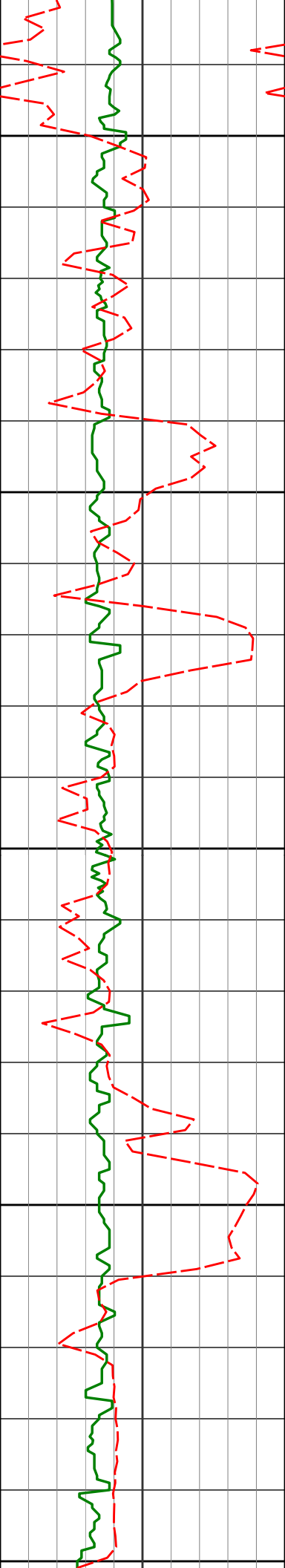
3342'

1.09°

165.47°

3341.69'

-2.52'



3437'

0.84°

200.99°

3436.68'

-2.60'

3450

3500

3531'

0.44°

266.05°

3530.67'

-3.23'

3550

3600

3626'

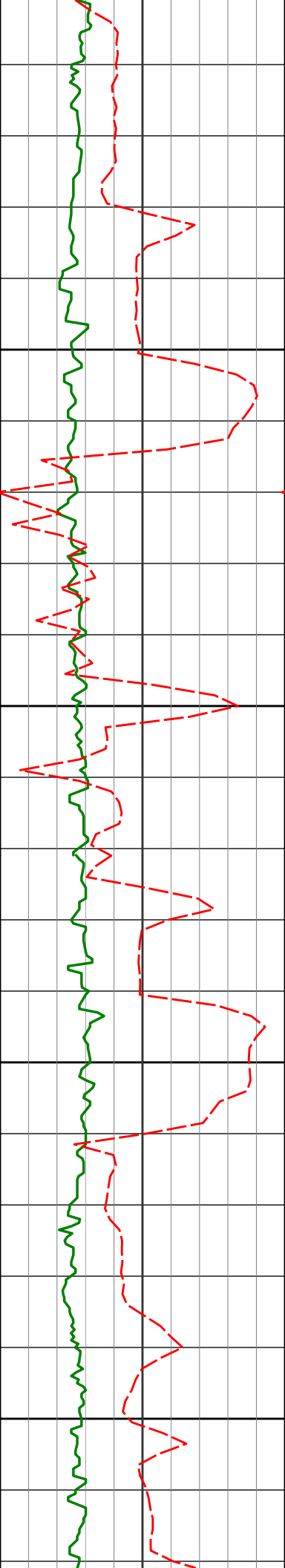
2.23°

18.90°

3625.65'

-2.93'

3650



3700

3721'

3.59°

28.45°

3720.53'

-0.75'

3750

3800

3815'

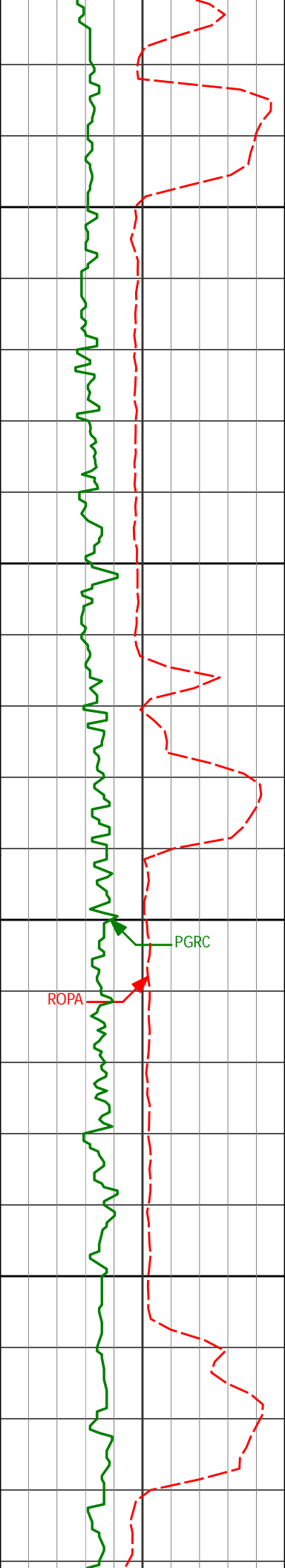
5.76°

33.93°

3814.21'

3.52'

3850



3910'

7.75°

35.20°

3908.54'

10.21'

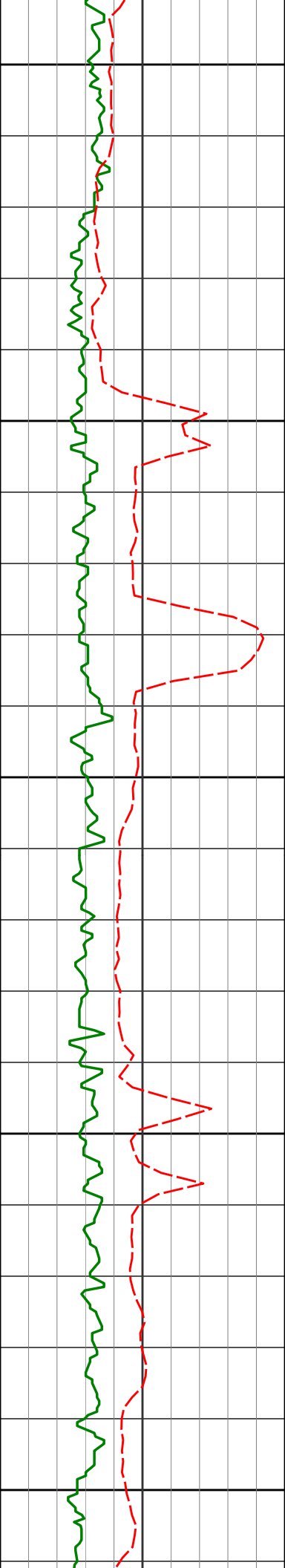
4005'

8.90°

34.84°

4002.54'

18.51'



4100

4150

4200

4250

4300

4100'

10.44°

34.14°

4096.19'

28.01'

4194'

11.39°

33.81°

4188.49'

38.50'

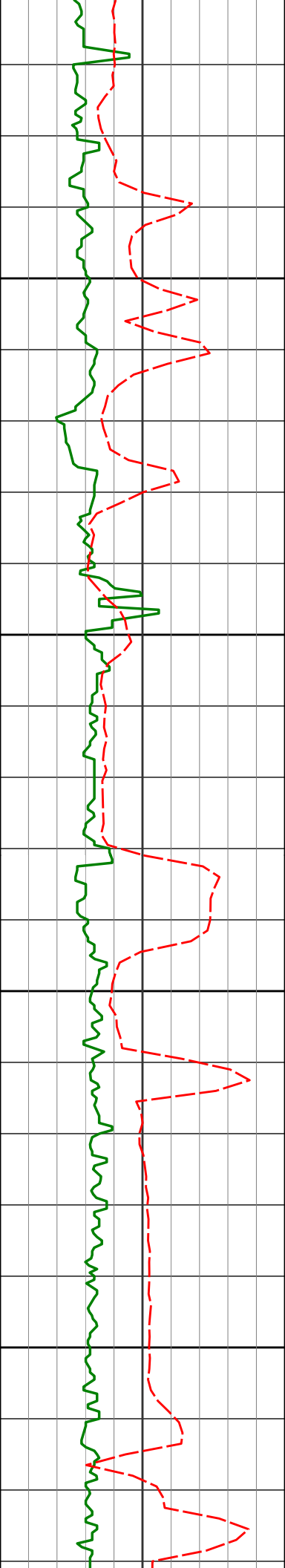
4289'

11.42°

32.29°

4281.61'

49.31'



4350

4384'

10.91°

31.37°

4374.81'

59.59'

4400

4450

4479'

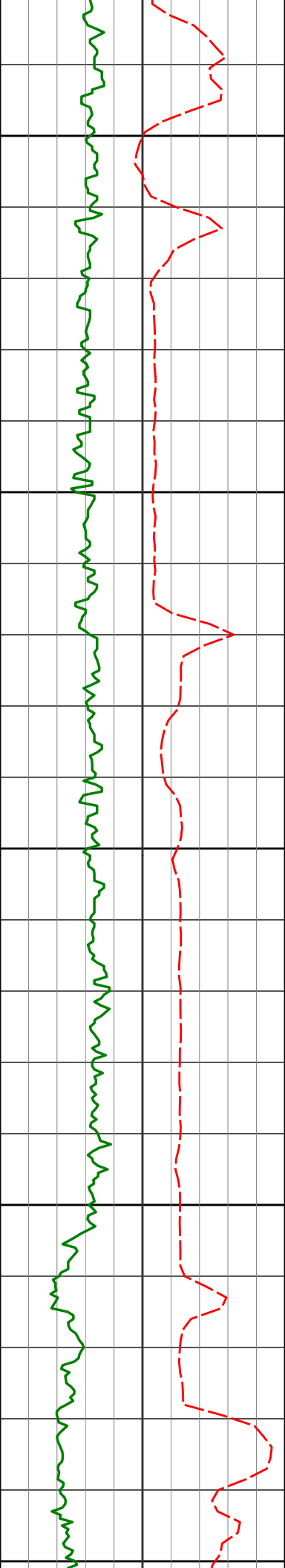
10.86°

30.69°

4468.10'

69.39'

4500



4550

4573'

10.21°

29.80°

4560.52'

78.59'

4600

4650

4668'

9.51°

26.84°

4654.12'

86.84'

4700

4750

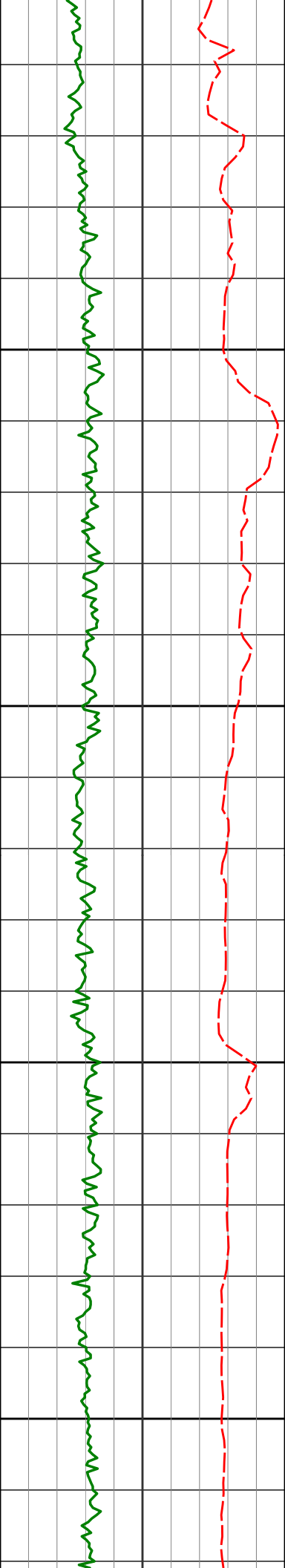
4763'

9.70°

25.12°

4747.79'

94.30'



4800

4857'

10.74°

27.51°

4840.29'

102.26'

4850

4900

4952'

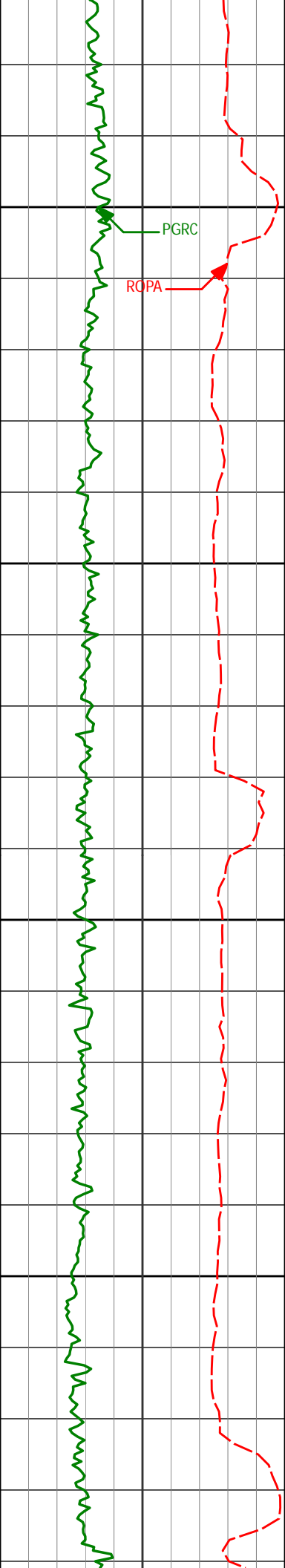
11.09°

27.75°

4933.57'

111.18'

4950



5000

5050

5100

5150

5047'

9.45°

24.75°

5027.05'

119.25'

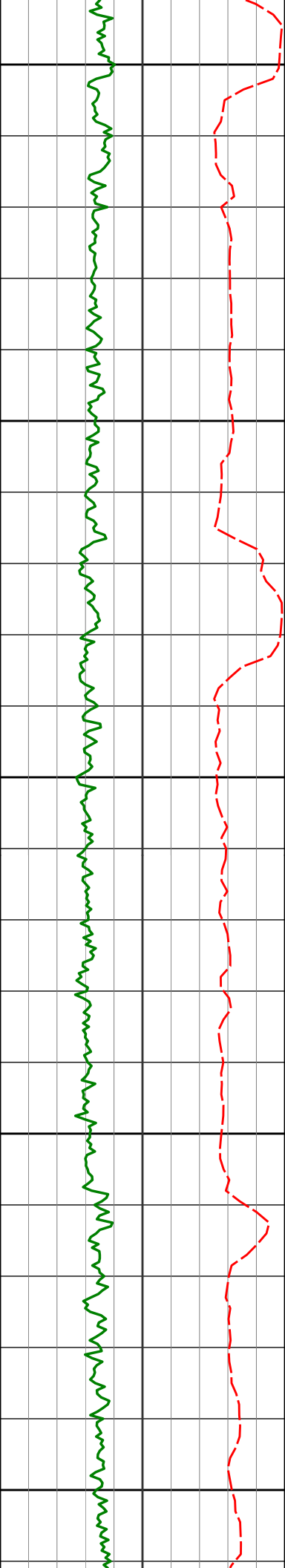
5142'

8.72°

22.32°

5120.86'

125.76'



5200

5236'

9.22°

25.02°

5213.71'

132.14'

5250

5300

5331'

9.87°

30.14°

5307.39'

139.95'

5350

5400

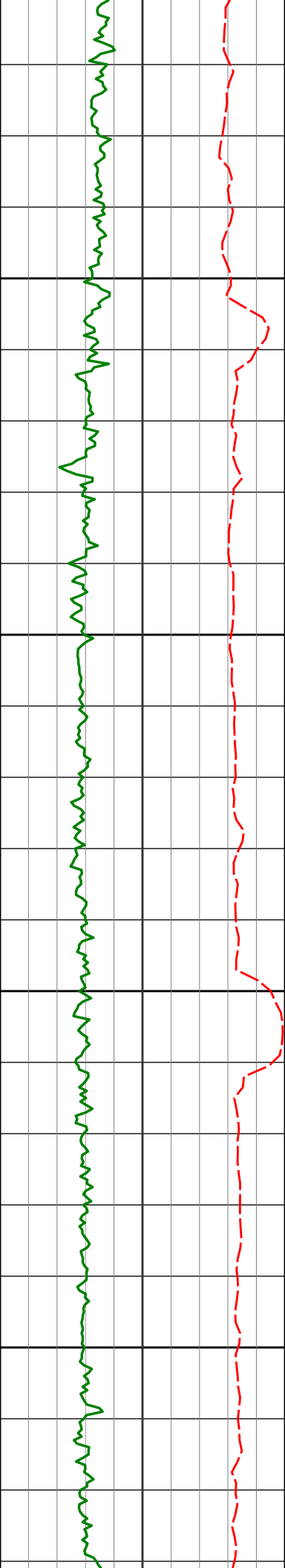
5426'

8.94°

28.43°

5401.12'

148.05'



5450

5521'

8.22°

28.83°

5495.05'

155.29'

5500

5550

5616'

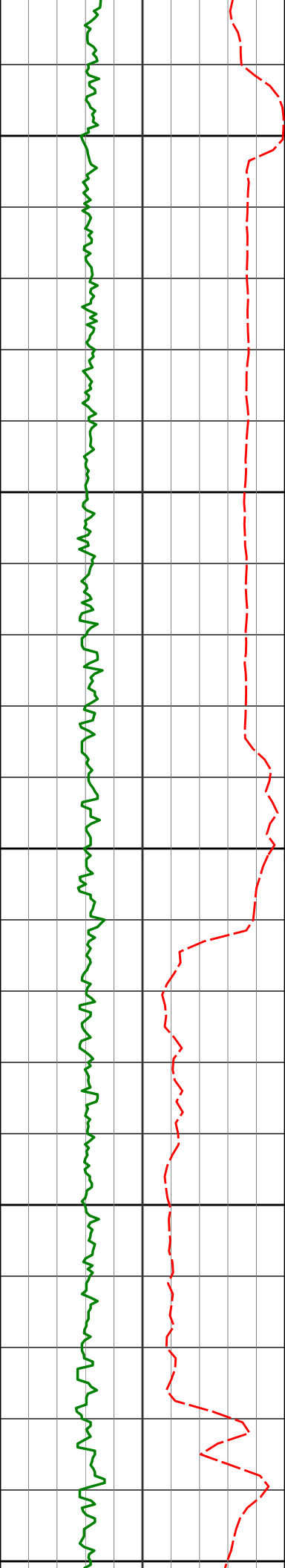
8.22°

25.20°

5589.08'

161.90'

5600



5650

5710'

7.64°

25.72°

5682.18'

167.90'

5700

200

5750

5805'

8.04°

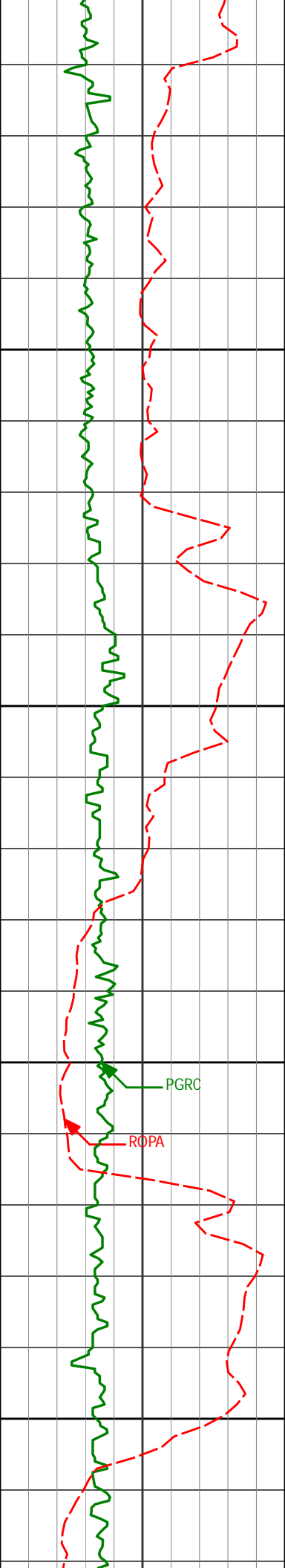
25.32°

5776.29'

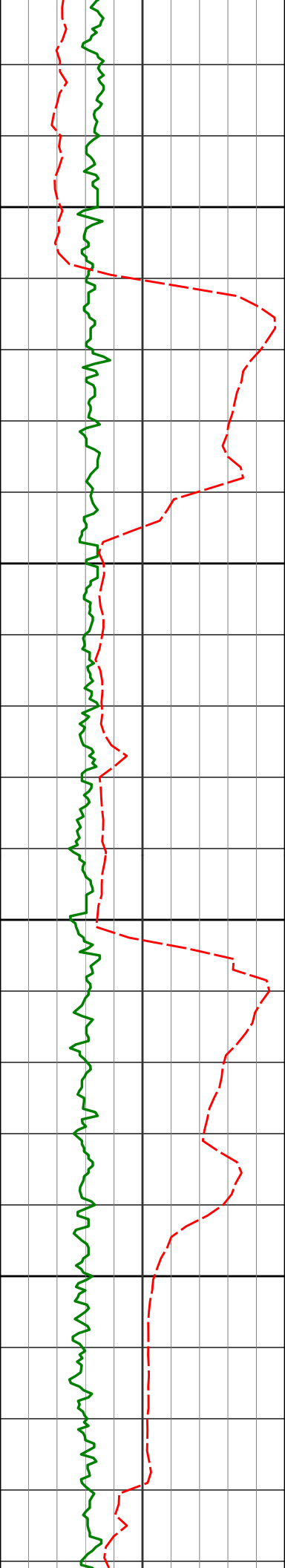
173.91'

5800

5850



5900'	8.87°	34.05°	5870.26'	181.29'
5900				
5900				
5950				
5995'	9.54°	30.73°	5964.04'	189.88'
6000				
6050				
6089'	10.08°	33.71°	6056.66'	198.92'



6100

6150

6200

6250

6184'

10.53°

30.00°

6150.13'

208.40'

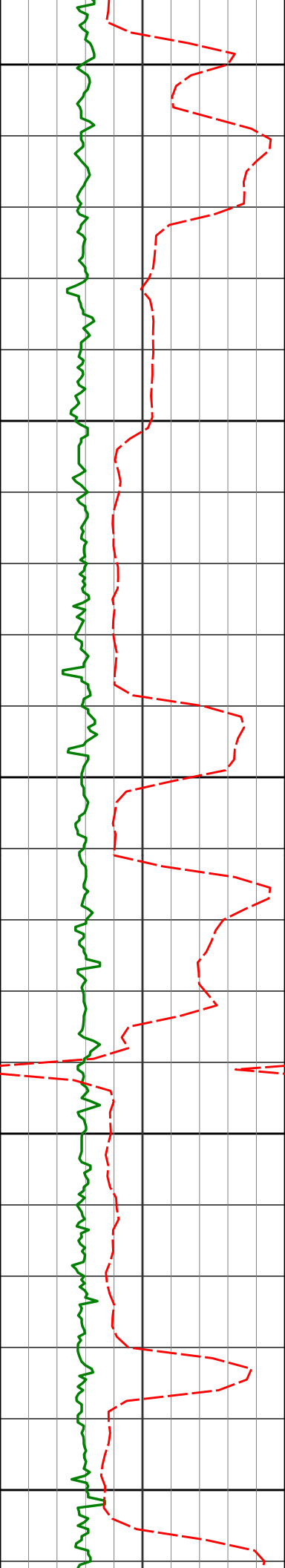
6279'

11.45°

27.22°

6243.39'

217.63'



6300

6350

6400

6450

6500

6374'

10.60°

22.82°

6336.64'

225.93'

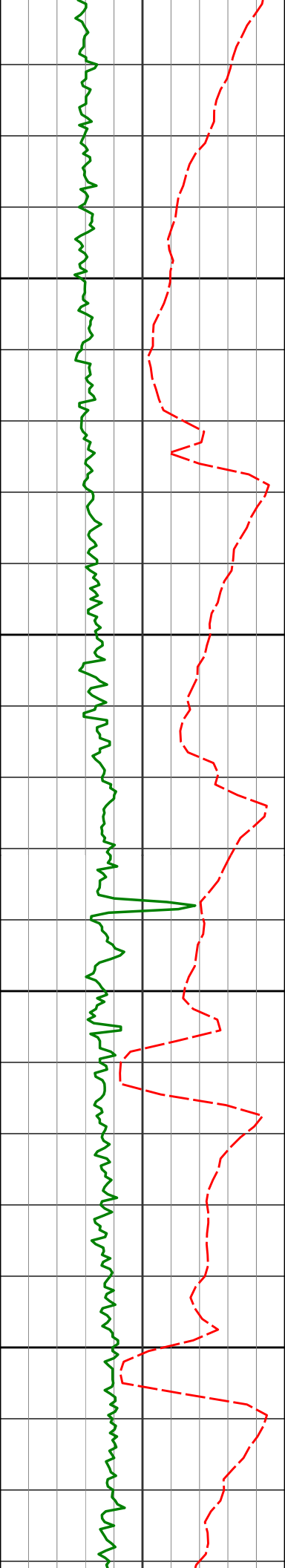
6493'

9.01°

23.86°

6453.89'

234.63'



6550

6600

6650

6700

6564'

10.15°

31.51°

6523.91'

240.53'

6612'

15.49°

42.27°

6570.70'

247.36'

6658'

19.82°

49.04°

6614.53'

257.73'

6706'

23.40°

52.69°

6659.15'

271.87'

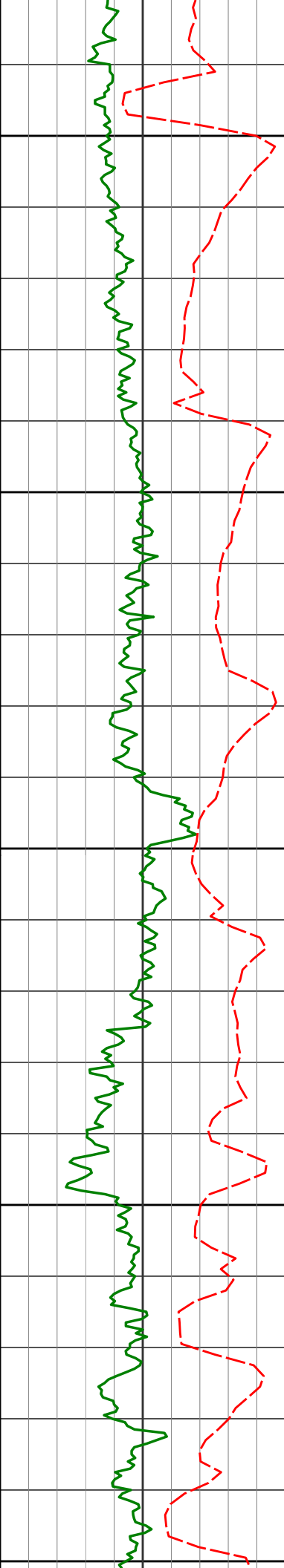
6753'

26.16°

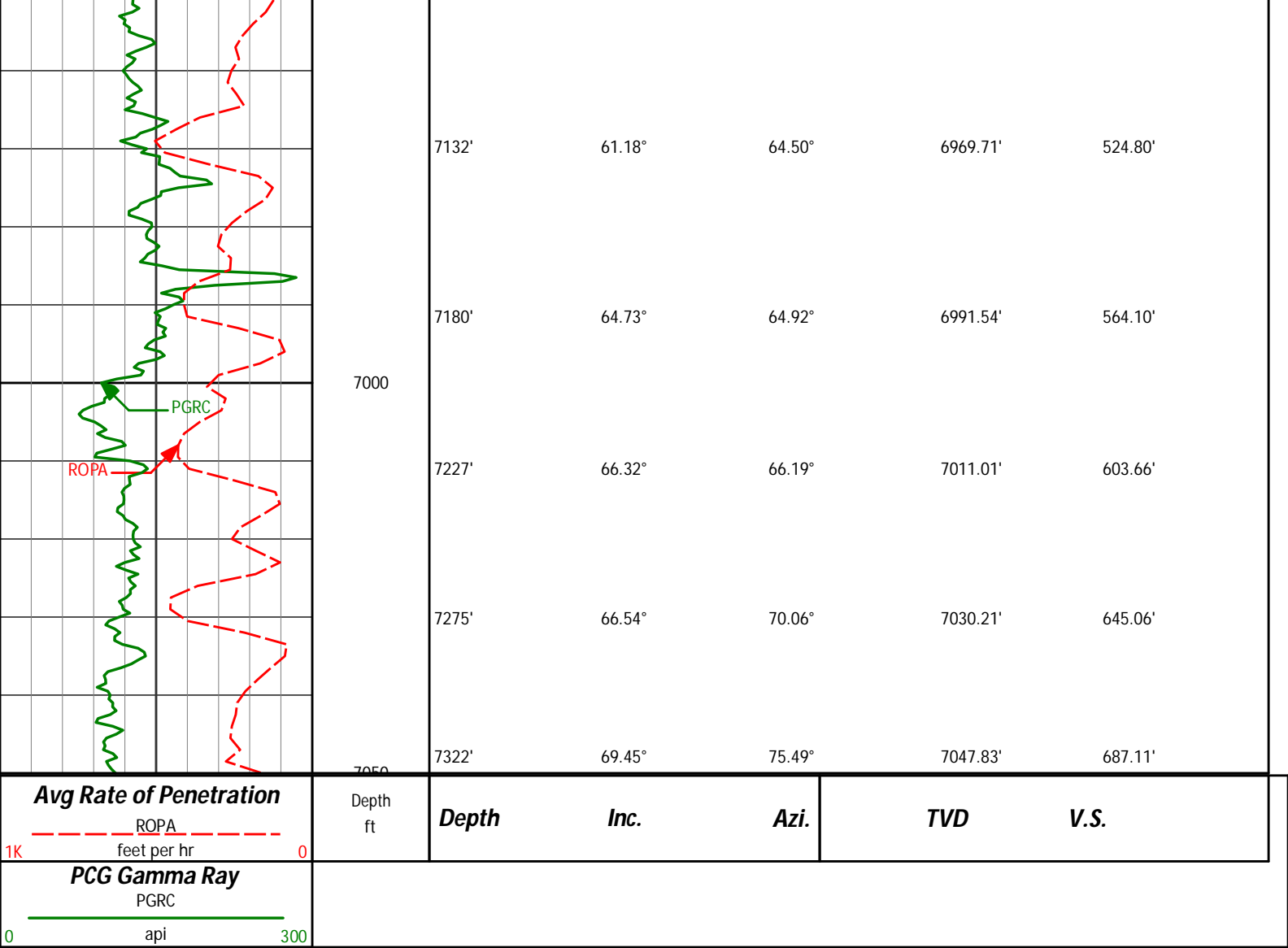
57.72°

6701.82'

288.45'



6750	6801'	29.54°	61.29°	6744.26'	308.19'
	6848'	34.24°	63.62°	6784.15'	330.62'
	6896'	39.62°	65.67°	6822.51'	357.12'
	6942'	45.45°	66.58°	6856.39'	385.99'
	6990'	49.91°	64.39°	6888.70'	418.78'
6800	7037'	53.18°	62.70°	6917.93'	452.30'
	7085'	56.74°	63.55°	6945.49'	487.98'



HALLIBURTON

DIRECTIONAL SURVEY REPORT

Noble
SHABLE K08-69HN
Wattenberg
Weld Colorado
USA
CA-XX-0901584411

Measured Depth (feet)	Inclination (degrees)	Direction (degrees)	Vertical Depth (feet)	Latitude (feet)	Departure (feet)	Vertical Section (feet)	Dogleg (deg/100ft)
0.00	0.00	0.00	0.00	0.00 N	0.00 E	0.00	TIE-IN
723.00	0.22	352.50	723.00	1.38 N	0.18 W	-0.13	0.03
814.00	0.69	310.81	814.00	1.91 N	0.62 W	-0.55	0.60
907.00	0.51	315.63	906.99	2.57 N	1.33 W	-1.24	0.20
999.00	0.49	243.37	998.99	2.69 N	1.97 W	-1.87	0.64
1091.00	0.13	222.75	1090.99	2.43 N	2.39 W	-2.30	0.40
1183.00	0.18	328.07	1182.99	2.48 N	2.54 W	-2.45	0.27
1274.00	0.22	312.76	1273.99	2.72 N	2.74 W	-2.64	0.07
1367.00	0.68	307.20	1366.98	3.17 N	3.31 W	-3.20	0.50
1458.00	0.75	294.17	1457.98	3.74 N	4.29 W	-4.15	0.19
1551.00	0.96	288.05	1550.96	4.23 N	5.58 W	-5.42	0.25
1643.00	0.91	282.89	1642.95	4.64 N	7.03 W	-6.85	0.11
1736.00	0.70	307.55	1735.94	5.15 N	8.20 W	-8.00	0.43

1828.00	1.05	327.99	1827.93	6.20 N	9.09 W	-8.86	0.50
1920.00	0.96	337.00	1919.92	7.63 N	9.84 W	-9.55	0.20
2015.00	1.07	358.10	2014.90	9.25 N	10.18 W	-9.83	0.41
2110.00	1.06	348.78	2109.89	11.00 N	10.38 W	-9.97	0.18
2204.00	1.31	347.76	2203.87	12.90 N	10.78 W	-10.29	0.27
2299.00	1.91	168.55	2298.85	12.41 N	10.69 W	-10.23	3.39
2394.00	1.20	157.27	2393.82	9.94 N	9.99 W	-9.62	0.81
2489.00	0.69	64.22	2488.81	9.27 N	9.09 W	-8.75	1.49
2584.00	0.71	45.38	2583.80	9.93 N	8.16 W	-7.79	0.24
2679.00	0.80	49.11	2678.79	10.78 N	7.24 W	-6.84	0.11
2773.00	0.69	144.32	2772.79	10.75 N	6.41 W	-6.01	1.17
2868.00	1.06	152.32	2867.78	9.51 N	5.67 W	-5.32	0.41
2963.00	1.05	158.81	2962.76	7.92 N	4.95 W	-4.65	0.13
3058.00	1.11	154.54	3057.74	6.28 N	4.24 W	-4.01	0.11
3153.00	1.28	165.16	3152.72	4.42 N	3.57 W	-3.41	0.29
3247.00	0.93	160.26	3246.71	2.69 N	3.05 W	-2.94	0.39
3342.00	1.09	165.47	3341.69	1.09 N	2.56 W	-2.52	0.19
3437.00	0.84	200.99	3436.68	0.44 S	2.58 W	-2.60	0.67
3531.00	0.44	266.05	3530.67	1.11 S	3.19 W	-3.23	0.82
3626.00	2.23	18.90	3625.65	0.62 N	2.95 W	-2.93	2.56
3721.00	3.59	28.45	3720.53	4.98 N	0.94 W	-0.75	1.51
3815.00	5.76	33.93	3814.21	11.48 N	3.10 E	3.52	2.35
3910.00	7.75	35.20	3908.54	20.67 N	9.45 E	10.21	2.10
4005.00	8.90	34.84	4002.54	31.94 N	17.34 E	18.51	1.21
4100.00	10.44	34.14	4096.19	45.10 N	26.37 E	28.01	1.63
4194.00	11.39	33.81	4188.49	59.86 N	36.32 E	38.50	1.01
4289.00	11.42	32.29	4281.61	75.60 N	46.56 E	49.31	0.32
4384.00	10.91	31.37	4374.81	91.23 N	56.26 E	59.59	0.57
4479.00	10.86	30.69	4468.10	106.60 N	65.51 E	69.39	0.15
4573.00	10.21	29.80	4560.52	121.44 N	74.17 E	78.59	0.71
4668.00	9.51	26.84	4654.12	135.75 N	81.90 E	86.84	0.91
4763.00	9.70	25.12	4747.79	150.00 N	88.84 E	94.30	0.36
4857.00	10.74	27.51	4840.29	164.94 N	96.25 E	102.26	1.19
4952.00	11.09	27.75	4933.57	180.88 N	104.59 E	111.18	0.37
5047.00	9.45	24.75	5027.05	196.05 N	112.11 E	119.25	1.82
5142.00	8.72	22.32	5120.86	209.79 N	118.11 E	125.76	0.87
5236.00	9.22	25.02	5213.71	223.21 N	124.00 E	132.14	0.70
5331.00	9.87	30.14	5307.39	237.15 N	131.31 E	139.95	1.12
5426.00	8.94	28.43	5401.12	250.68 N	138.91 E	148.05	1.02
5521.00	8.22	28.83	5495.05	263.12 N	145.70 E	155.29	0.76
5616.00	8.22	25.20	5589.08	275.21 N	151.87 E	161.90	0.55
5710.00	7.64	25.72	5682.18	286.92 N	157.44 E	167.90	0.62
5805.00	8.04	25.32	5776.29	298.62 N	163.02 E	173.91	0.42
5900.00	8.87	34.05	5870.26	310.69 N	169.97 E	181.29	1.61
5995.00	9.54	30.73	5964.04	323.53 N	178.09 E	189.88	0.90
6089.00	10.08	33.71	6056.66	337.07 N	186.64 E	198.92	0.79
6184.00	10.53	30.00	6150.13	351.50 N	195.59 E	208.40	0.84
6279.00	11.45	27.22	6243.39	367.41 N	204.24 E	217.63	1.12
6374.00	10.60	22.82	6336.64	383.84 N	211.95 E	225.93	1.26
6493.00	9.01	23.86	6453.89	402.46 N	219.96 E	234.63	1.34
6564.00	10.15	31.51	6523.91	412.87 N	225.48 E	240.53	2.40
6612.00	15.49	42.27	6570.70	421.23 N	232.01 E	247.36	12.14
6658.00	19.82	49.04	6614.53	430.89 N	242.03 E	257.73	10.40
6706.00	23.40	52.69	6659.15	442.01 N	255.76 E	271.87	7.96
6753.00	26.16	57.72	6701.82	453.20 N	271.95 E	288.45	7.38
6801.00	29.54	61.29	6744.26	464.54 N	291.28 E	308.19	7.85
6848.00	34.24	63.62	6784.15	475.99 N	313.30 E	330.62	10.34
6896.00	39.62	65.67	6822.51	488.31 N	339.37 E	357.12	11.50
6942.00	45.45	66.58	6856.39	500.87 N	367.80 E	385.99	12.74
6990.00	49.91	64.39	6888.70	515.62 N	400.07 E	418.78	9.88
7037.00	53.18	62.70	6917.93	532.02 N	433.01 E	452.30	7.51
7085.00	56.74	63.55	6945.49	549.78 N	468.06 E	487.98	7.56
7132.00	61.18	64.50	6969.71	567.40 N	504.25 E	524.80	9.60
7180.00	64.73	64.92	6991.54	585.66 N	542.90 E	564.10	7.44
7227.00	66.32	66.19	7011.01	603.36 N	581.84 E	603.66	4.18
7275.00	66.54	70.06	7030.21	619.75 N	622.66 E	645.06	7.40
7322.00	69.45	75.49	7047.83	632.62 N	664.26 E	687.11	12.37
7370.00	73.66	80.96	7063.02	641.88 N	708.82 E	731.97	13.92
7417.00	76.79	87.35	7075.02	646.49 N	753.99 E	777.29	14.73
7482.00	82.28	92.70	7086.83	646.43 N	817.86 E	841.11	11.70

CALCULATION BASED ON MINIMUM CURVATURE METHOD

SURVEY COORDINATES RELATIVE TO WELL SYSTEM REFERENCE POINT

TVD VALUES GIVEN RELATIVE TO DRILLING MEASUREMENT POINT

VERTICAL SECTION RELATIVE TO WELL HEAD

VERTICAL SECTION IS COMPUTED ALONG A DIRECTION OF 87.89 DEGREES (GRID)

A TOTAL CORRECTION OF 7.91 DEG FROM MAGNETIC NORTH TO GRID NORTH HAS BEEN APPLIED

HORIZONTAL DISPLACEMENT IS RELATIVE TO THE WELL HEAD.

HORIZONTAL DISPLACEMENT(CLOSURE) AT 7482.00 FEET

IS 1042.49 FEET ALONG 51.68 DEGREES (GRID)

Tied in @ Surface

Date Printed: 28 August 2014