

MD 3153 TVD 3152.72
INC 1.28 AZ 165.16
VS -3.41

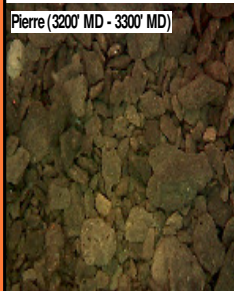
ROP (Ft/Hr)
Gamma (API)

MD 3247 TVD 3246.71
INC 0.93 AZ 160.26
VS -2.94

MD 3342 TVD 3341.69
INC 1.08 AZ 165.47
VS -2.52

3100'- 3200': SLTST: 75% LTGY -
MEDLTGY, FRI, FN TO MED GRN, W
SRTD, CALC CMT, SANDY, SILTY,
IMBD PYR, IMBD SS LAMN, INTGR
POR, NO STN, NO FLOR, NO O
FLOR, NO CUT

Pierre (3200' MD - 3300' MD)

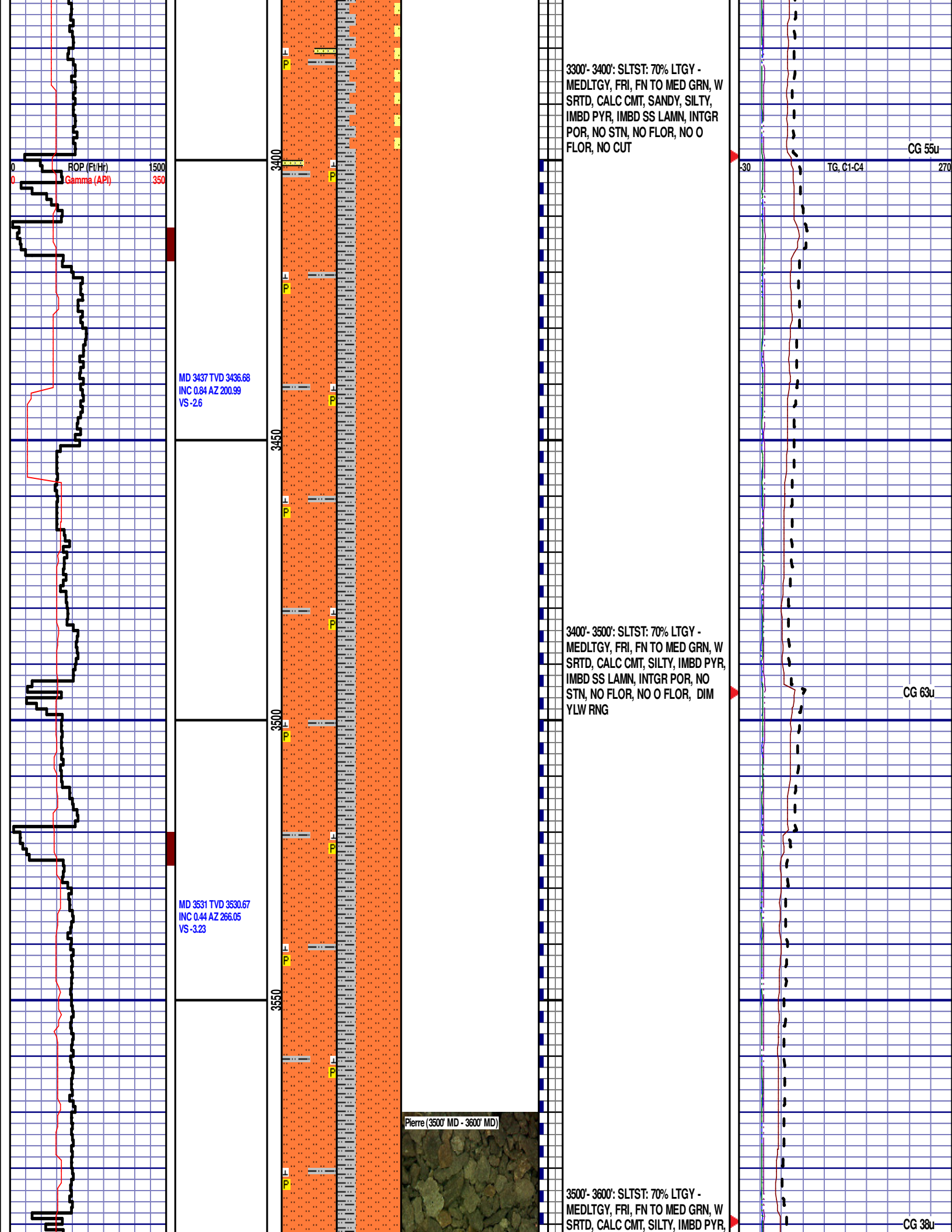


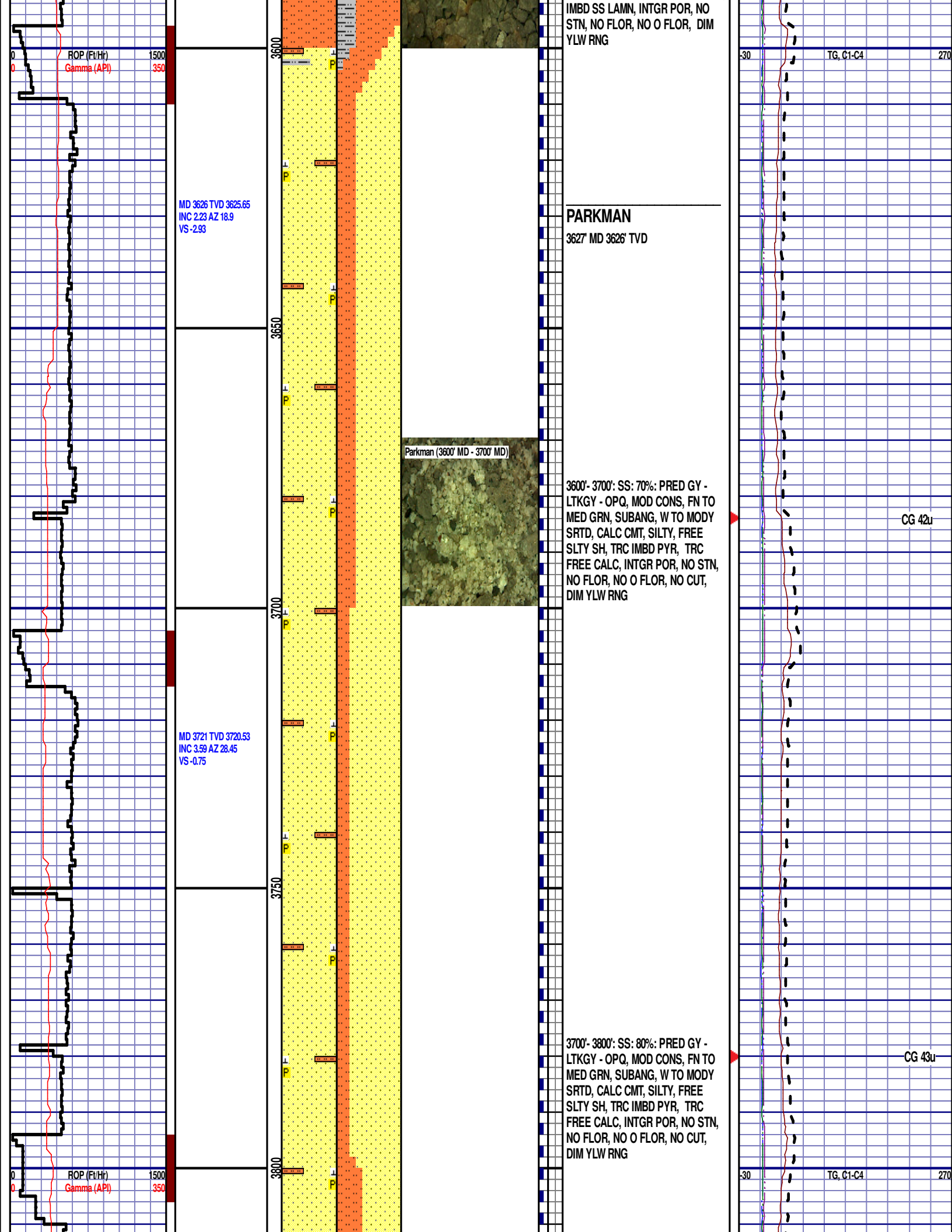
3200'- 3300': SLTST: 80% LTGY -
MEDLTGY, FRI, FN TO MED GRN, W
SRTD, CALC CMT, SILTY, IMBD PYR,
IMBD SS LAMN, INTGR POR, NO
STN, NO FLOR, NO O FLOR, NO
CUT

TG, C1-C4

CG 63u

CG 60u





MD 3815 TVD 3814.21
INC 5.76 AZ 33.93
VS 3.52

MD 3910 TVD 3908.54
INC 7.75 AZ 35.2
VS 10.21

MD 4005 TVD 4002.54
INC 8.9 AZ 34.84
VS 18.51

3850

3900

3950

4000

3800'- 3900': SS: 60%: PRED GY -
LTKGY - OPQ, MOD CONS, FN TO
MED GRN, SUBANG, W TO MODY
SRTD, CALC CMT, SILTY, FREE
SLTY SH, TRC IMBD PYR, TRC
FREE CALC, INTGR POR, NO STN,
NO FLOR, NO O FLOR, NO CUT,
DIM YLW RNG

Parkman (3900' MD - 4000' MD)

3900'- 4000': SLTST: 70% LTGY -
MEDLTGY, FRI, FN TO MED GRN, W
SRTD, CALC CMT, SILTY, SANDY,
IMBD PYR, IMBD SS LAMN, INTGR
POR, NO STN, NO FLOR, SLOW
LZY CUT, DIM YLW RNG

CG 43u

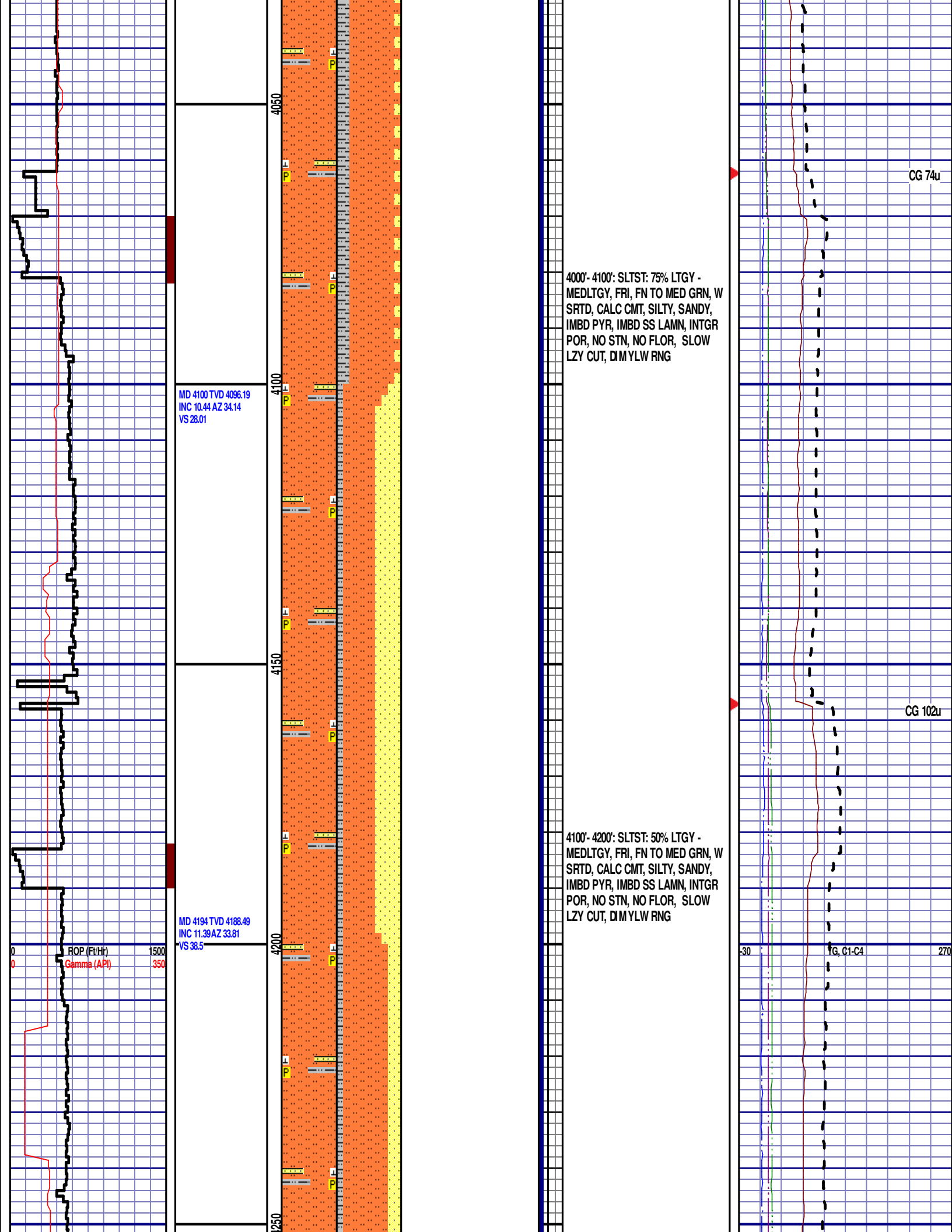
CG 53u

ROP (Ft/Hr)
Gamma (API)

1500
350

TG, C1-C4

270



MD 4289 TVD 4281.61
INC 11.42 AZ 32.29
VS 49.31

Parkman (4200' MD - 4300' MD)

4200'- 4300': SLTST: 70% LTGY -
MEDLTGY, FRI, FN TO MED GRN, W
SRTD, CALC CMT, SILTY, SANDY,
IMBD PYR, IMBD SS LAMN, INTGR
POR, NO STN, NO FLOR, SLOW
LZY CUT, DIM YLW RNG

SUSSEX

4313' MD 4305' TVD

MD 4384 TVD 4374.81
INC 10.91 AZ 31.37
VS 59.59

Sussex (4300' MD - 4400' MD)

4300'- 4400': SS: 90%: PRED GY -
LTKGY - OPQ, MOD CONS, FN TO
MED GRN, SUBANG, W TO MODY
SRTD, CALC CMT, TRC IMBD
GLAUC, SILTY, FREE SLTY SH, TRC
IMBD PYR, TRC FREE CALC, INTGR
POR, NO STN, NO FLOR, NO O
FLOR, SLOW LZY CUT, DIM YLW
RNG

ROP (Ft/Hr) 1500
Gamma (API) 350

30 TG, C1-C4 270

MD 4479 TVD 4468.1
INC 10.86 AZ 30.69
VS 69.39

MD 4573 TVD 4560.52
INC 10.21 AZ 29.8
VS 78.59

MD 4668 TVD 4654.12
INC 9.51 AZ 26.84
VS 86.84

PASON ERROR

ROP (Ft/Hr)
Gamma (API)

1500
350

4500

4550

4600

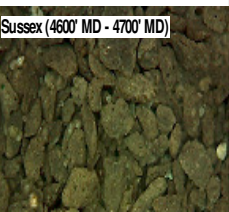
4650

4400'- 4500': SLTST: 60% LTGY -
MEDLTGY, FRI, FN TO MED GRN, W
SRTD, CALC CMT, SILTY, SANDY,
IMBD PYR, IMBD SS LAMN, INTGR
POR, NO STN, NO FLOR, SLOW
LZY CUT, DIM YLW RNG

4500'- 4600': SLTST: 70% LTGY -
MEDLTGY, FRI, FN TO MED GRN, W
SRTD, CALC CMT, SILTY, SANDY,
IMBD PYR, IMBD SS LAMN, INTGR
POR, NO STN, NO FLOR, SLOW
LZY CUT, DIM YLW RNG

4600'- 4700': SLTST: 80% LTGY -
MEDLTGY, FRI, FN TO MED GRN, W
SRTD, CALC CMT, SILTY, SANDY,
IMBD PYR, IMBD SS LAMN, INTGR
POR, NO STN, NO FLOR, SLOW

Sussex (4600' MD - 4700' MD)



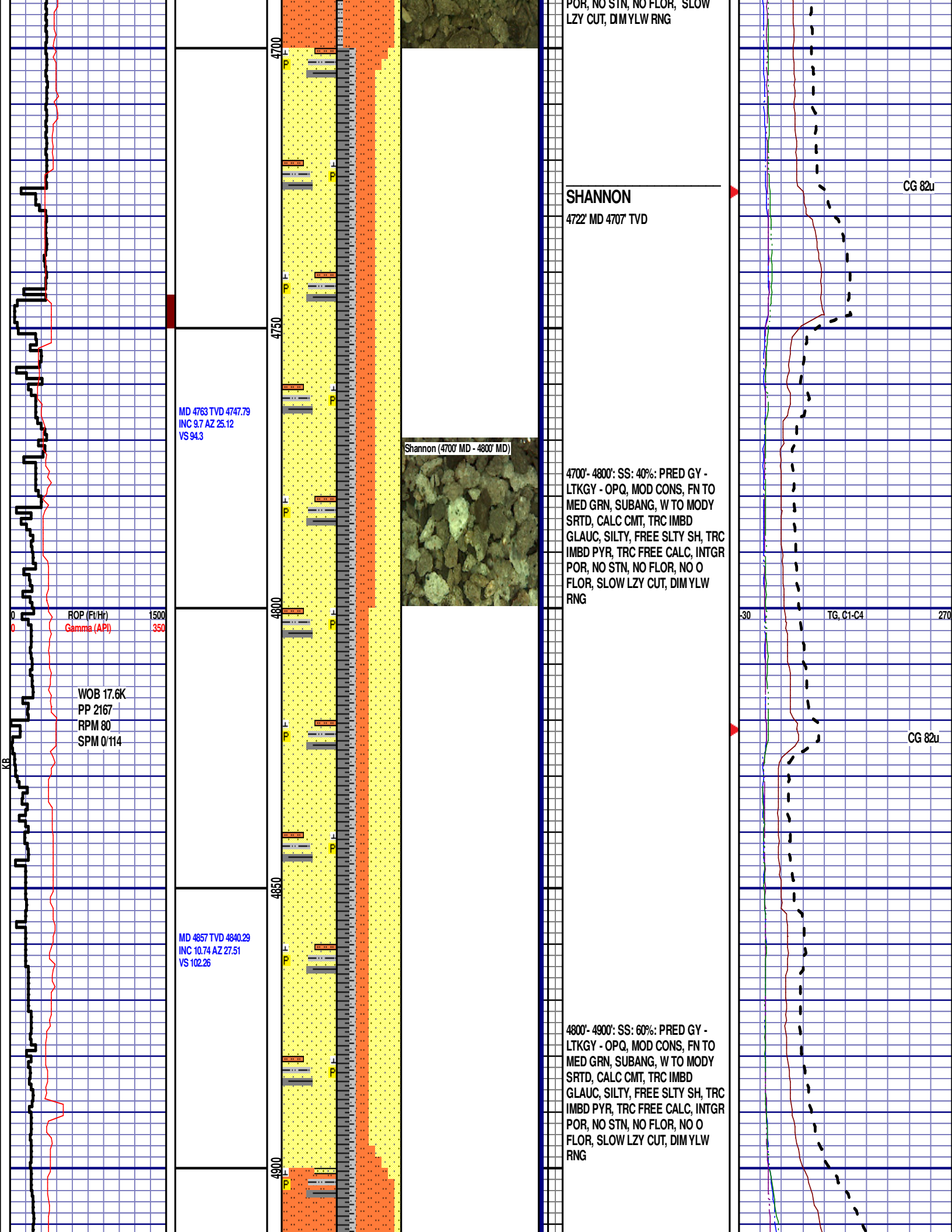
MD 4476'
WT 8.90
VIS 36.0
PH 9.4
FIL 9.5
CL 1500
CAL 60.0
H2O 94.8
OIL 0.0
SOL 3.9
CAKE 1/0
GELS 4/5/6
PV 8.0
YP 10.0

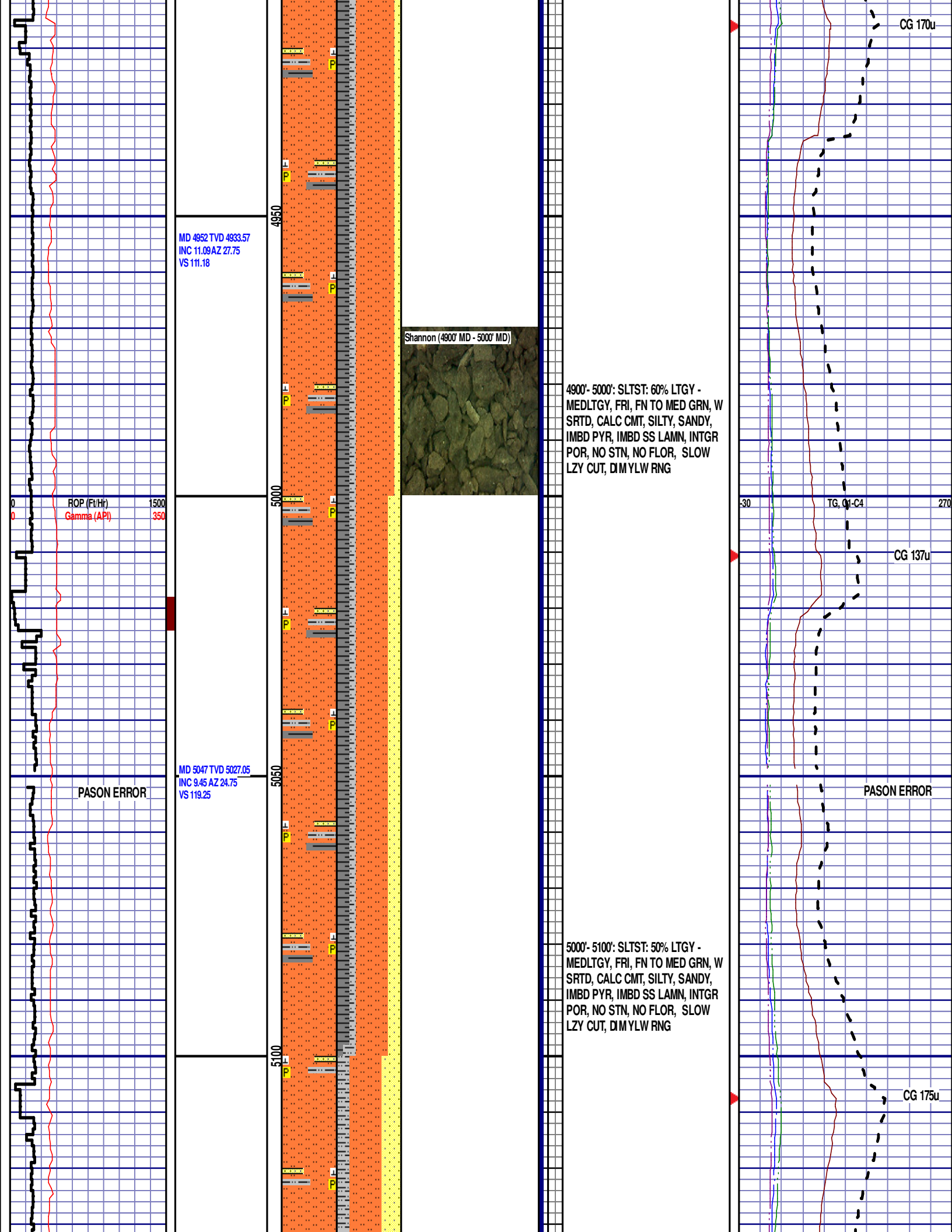
PASON ERROR

CG 107u

TG, C1-C4

CG 74u





MD 5142 TVD 5120.86
INC 8.72 AZ 22.32
VS 125.76

ROP (Ft/Hr) 1500
Gamma (API) 350

MD 5236 TVD 5213.71
INC 9.22 AZ 25.02
VS 132.14

MD 5331 TVD 5307.39
INC 9.87 AZ 30.14
VS 139.95

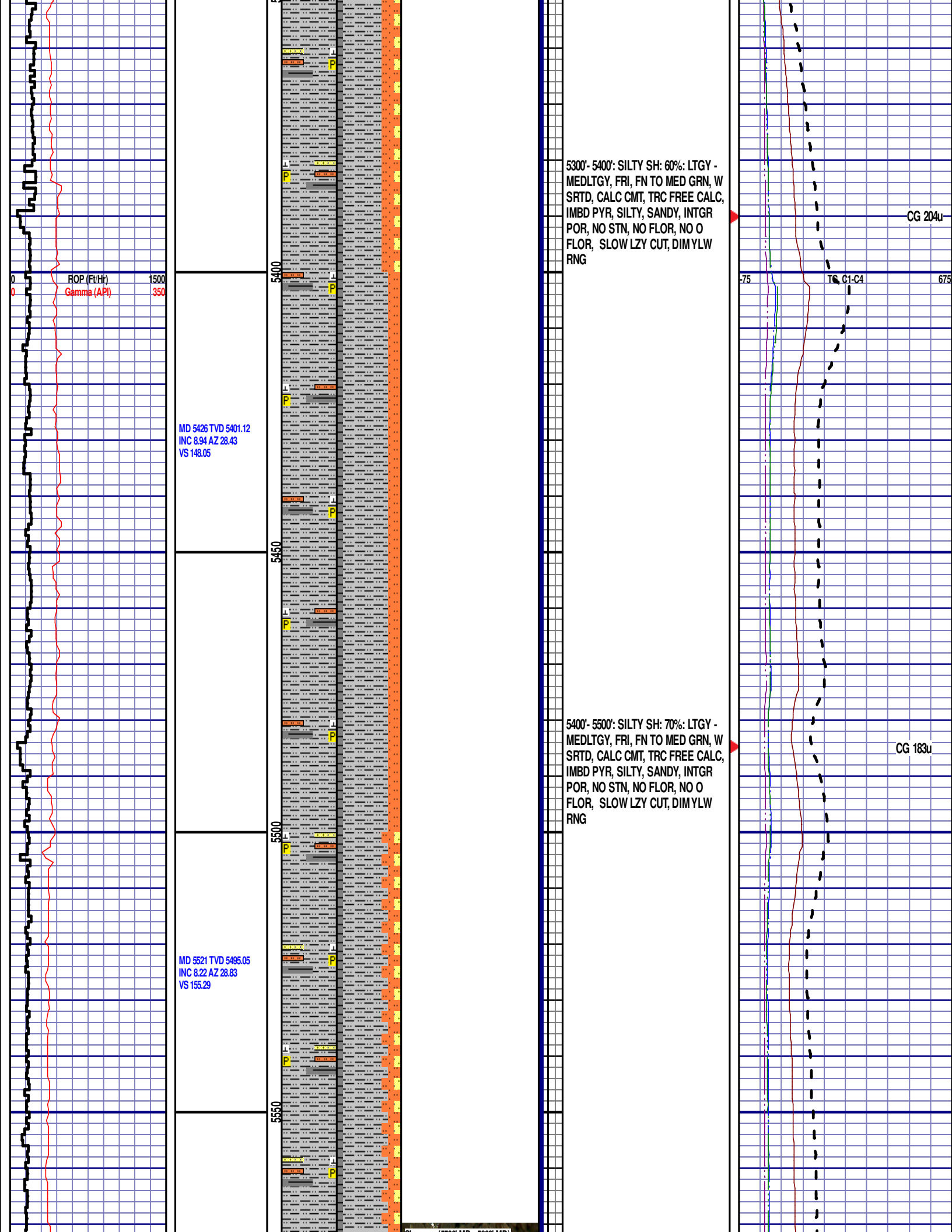
5100'- 5200': SLTST: 50% LTGY -
MEDLTGY, FRI, FN TO MED GRN, W
SRTD, CALC CMT, SILTY, SANDY,
IMBD PYR, IMBD SS LAMN, INTGR
POR, NO STN, NO FLOR, SLOW
LZY CUT, DIM YLW RNG

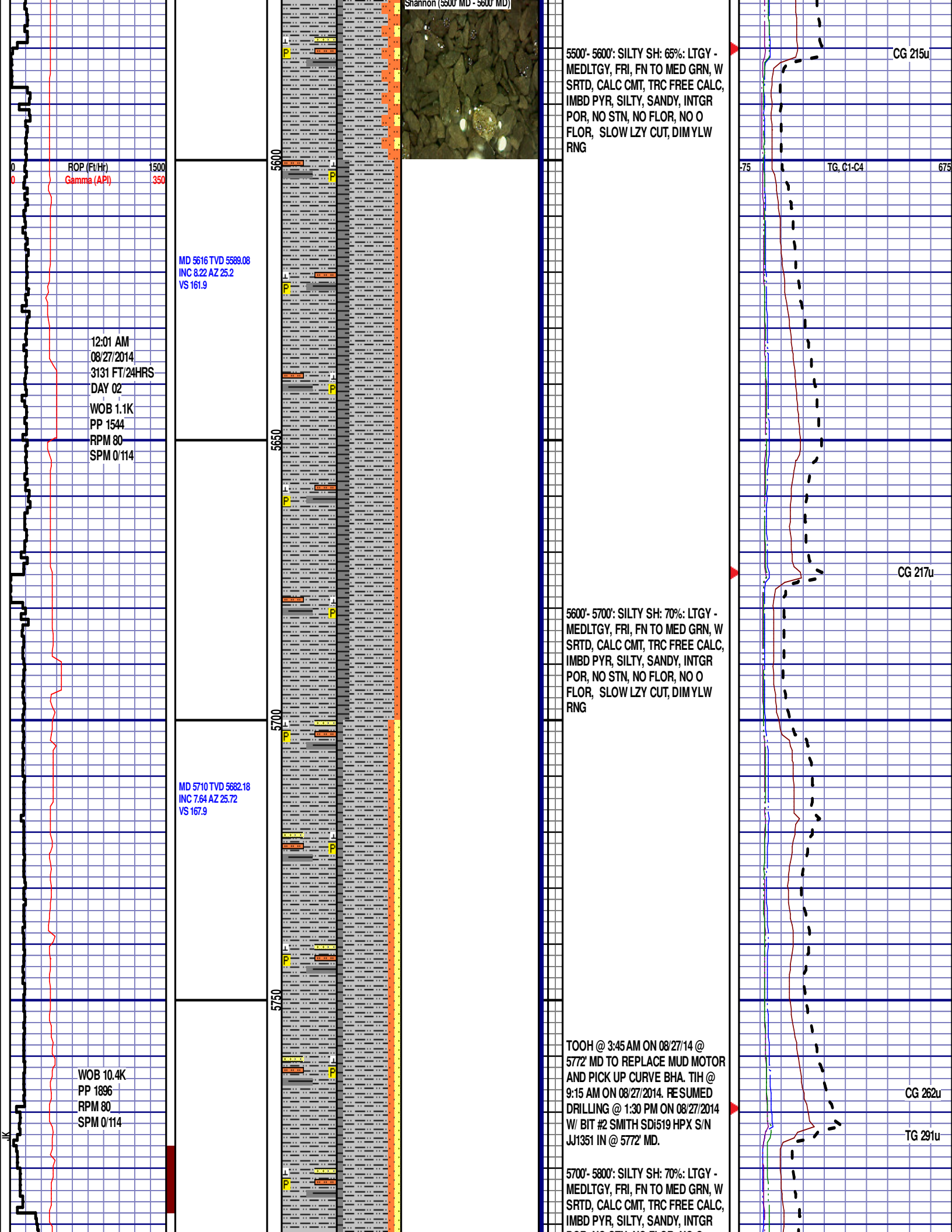
Shannon (5200' MD - 5300' MD)

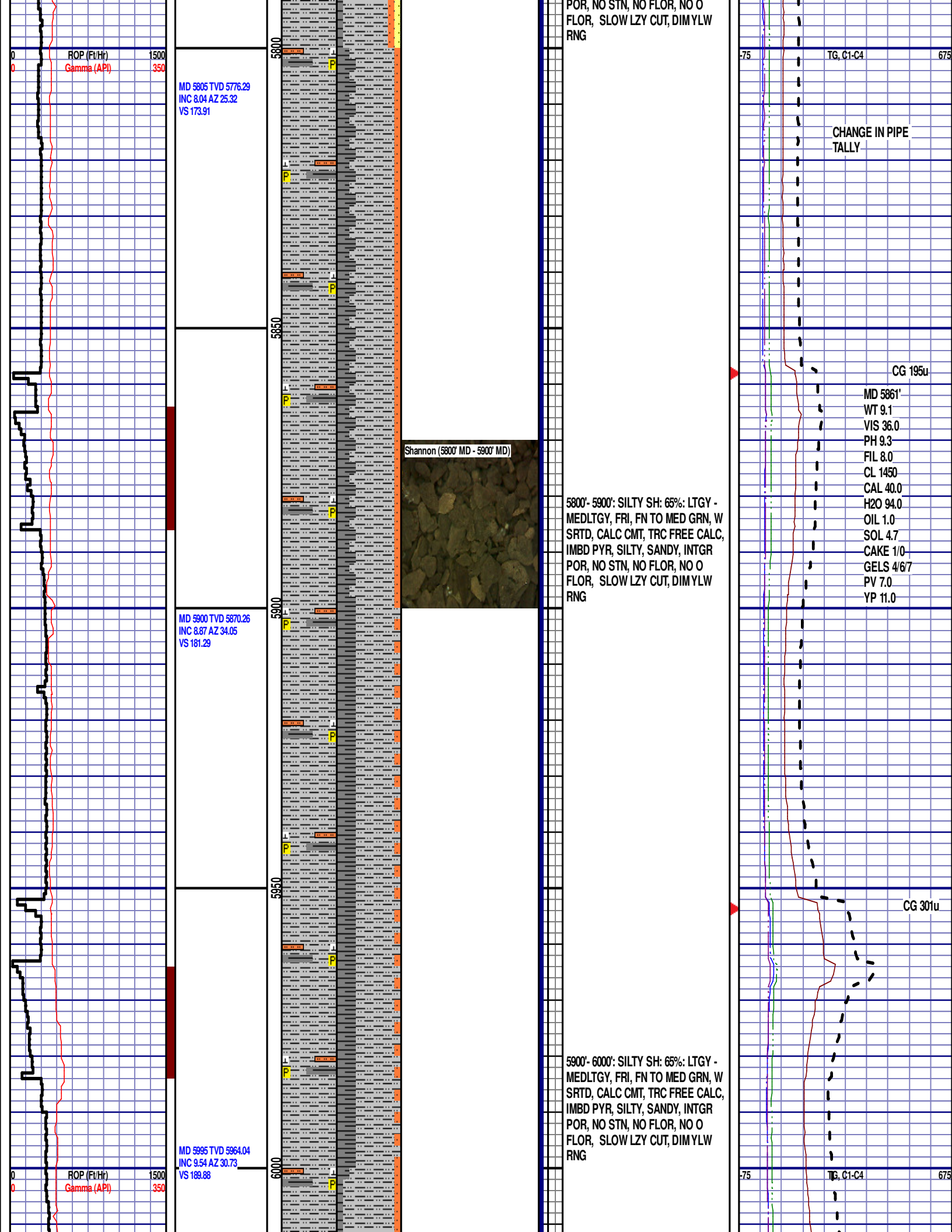
5200'- 5300': SLTST: 70% LTGY -
MEDLTGY, FRI, FN TO MED GRN, W
SRTD, CALC CMT, SILTY, SANDY,
IMBD PYR, IMBD SS LAMN, INTGR
POR, NO STN, NO FLOR, SLOW
LZY CUT, DIM YLW RNG

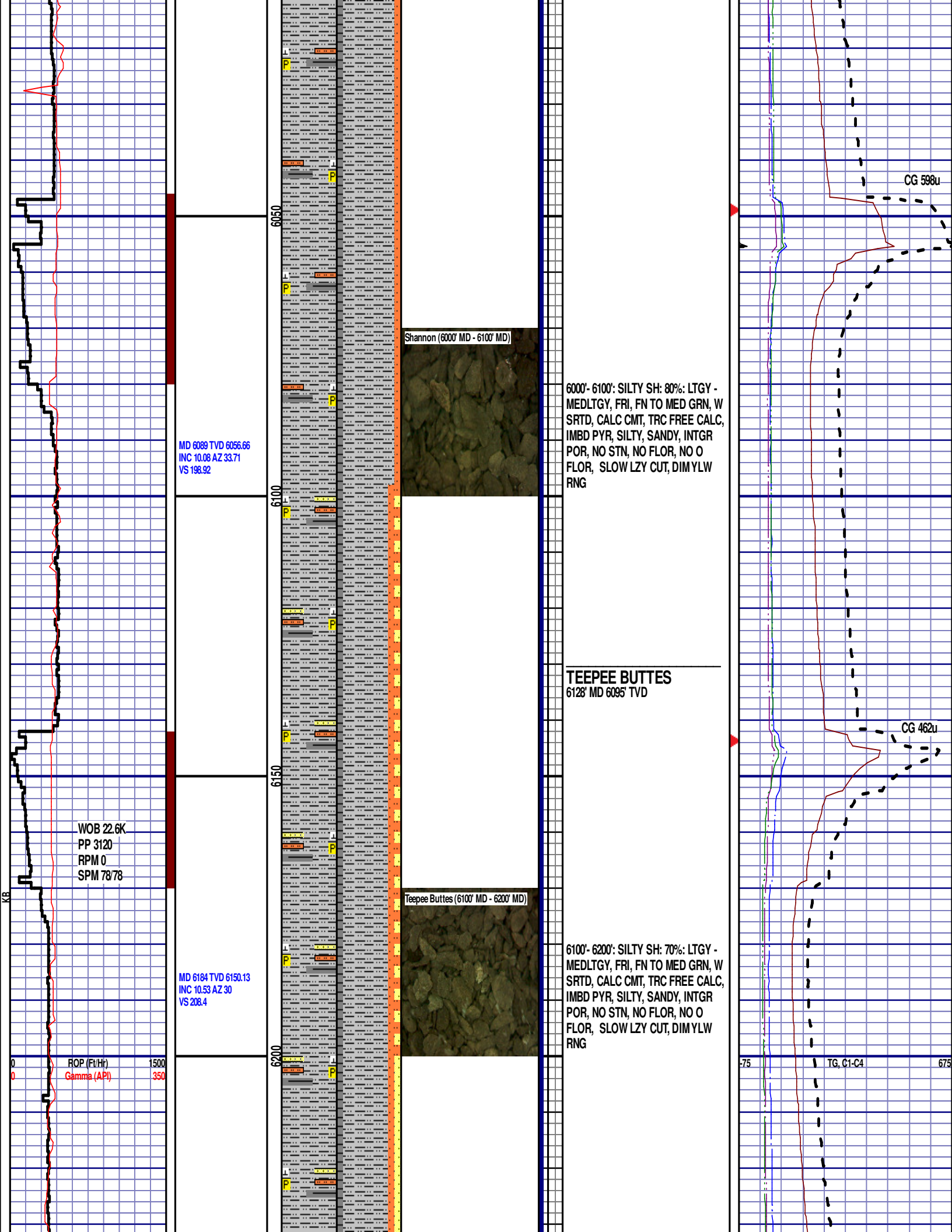
Scale Change
TG, C1-C4
GAS SCALE -75 TO 675
75 UNITS/ DIVISION

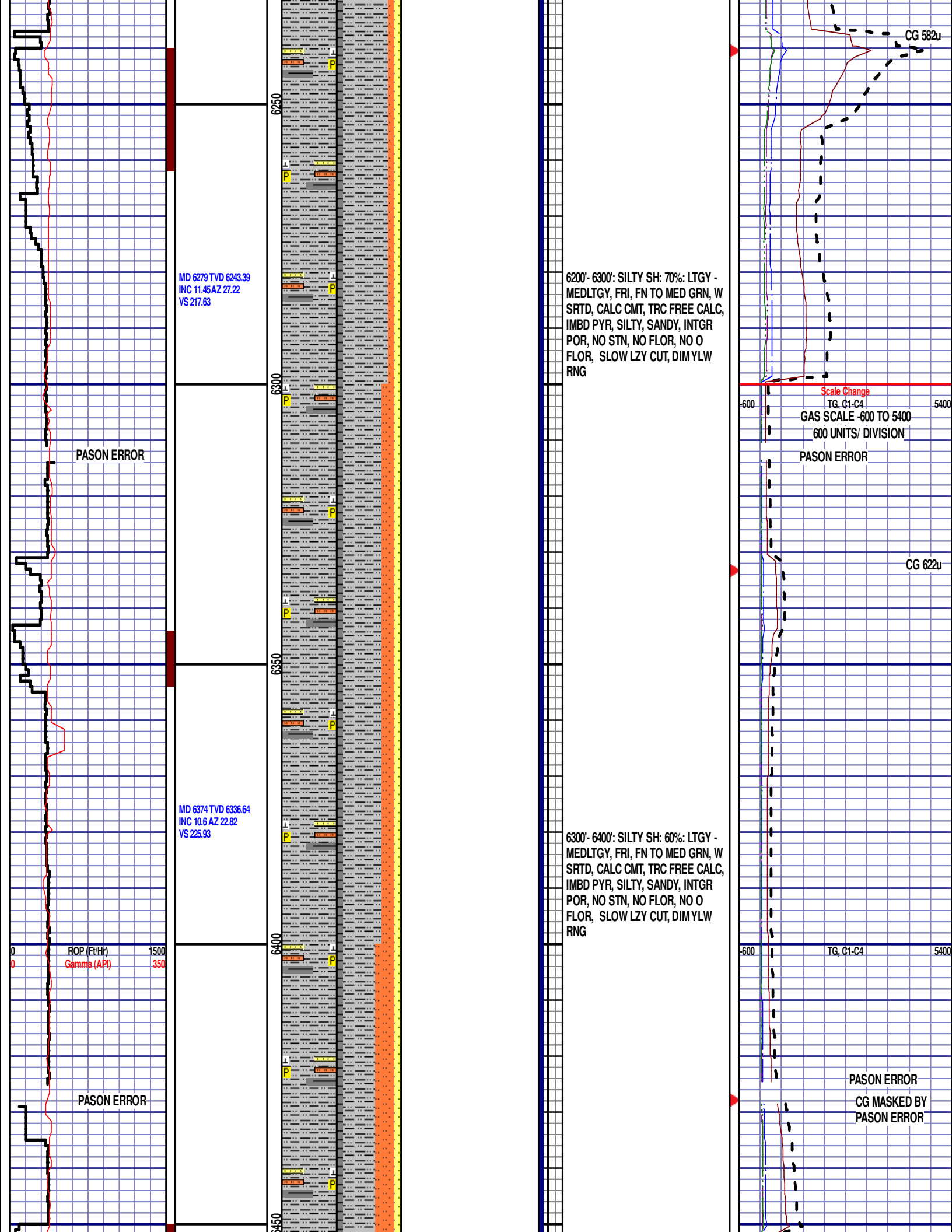
CG 164u

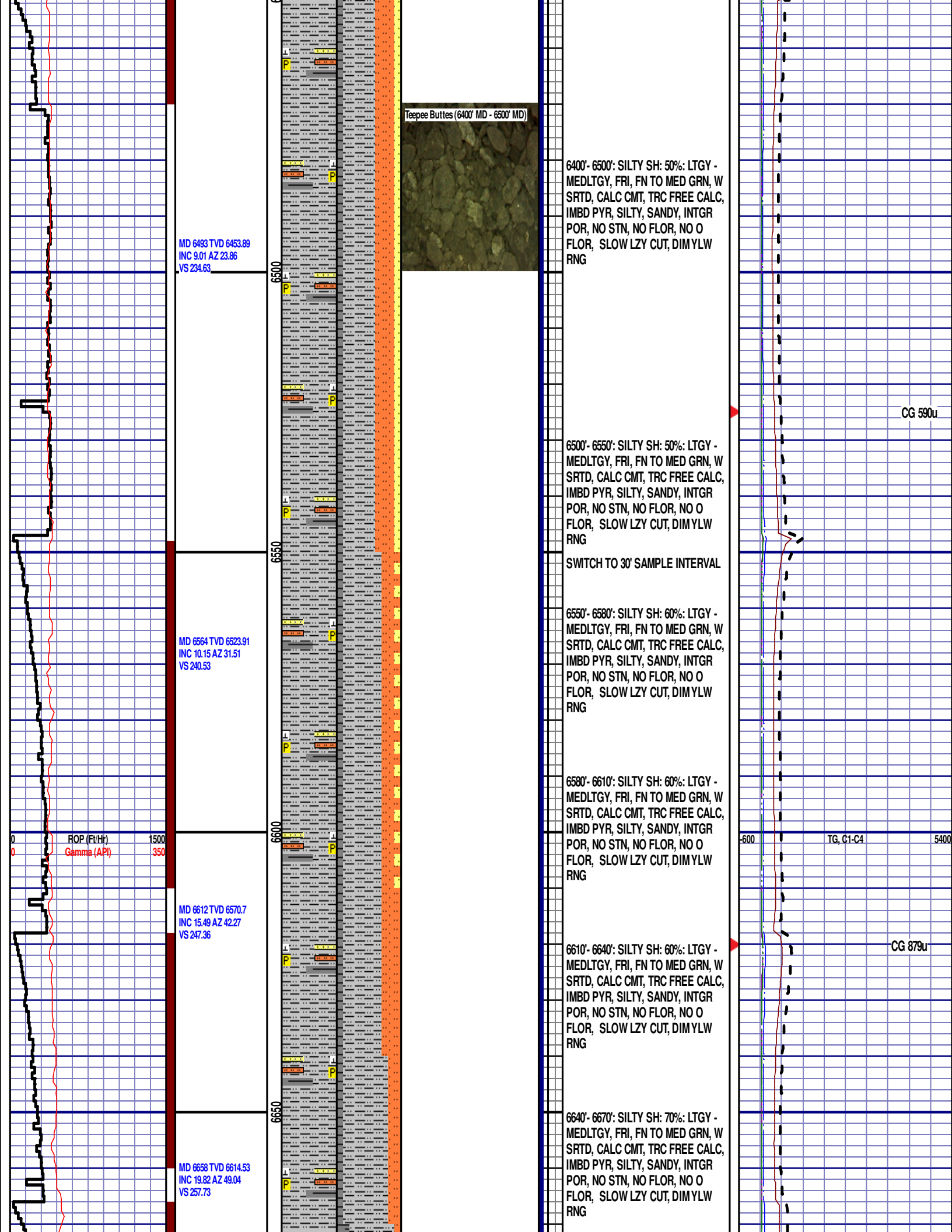


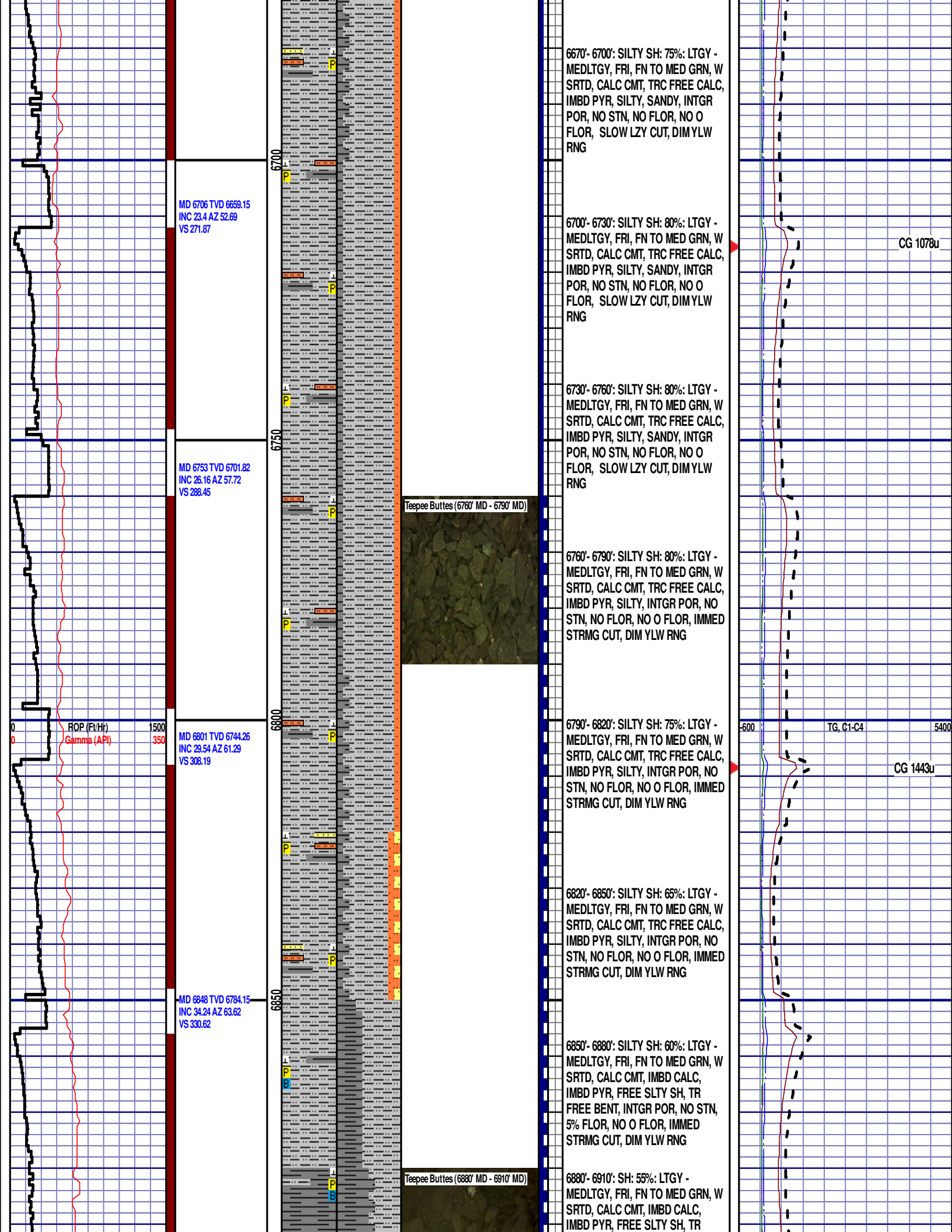


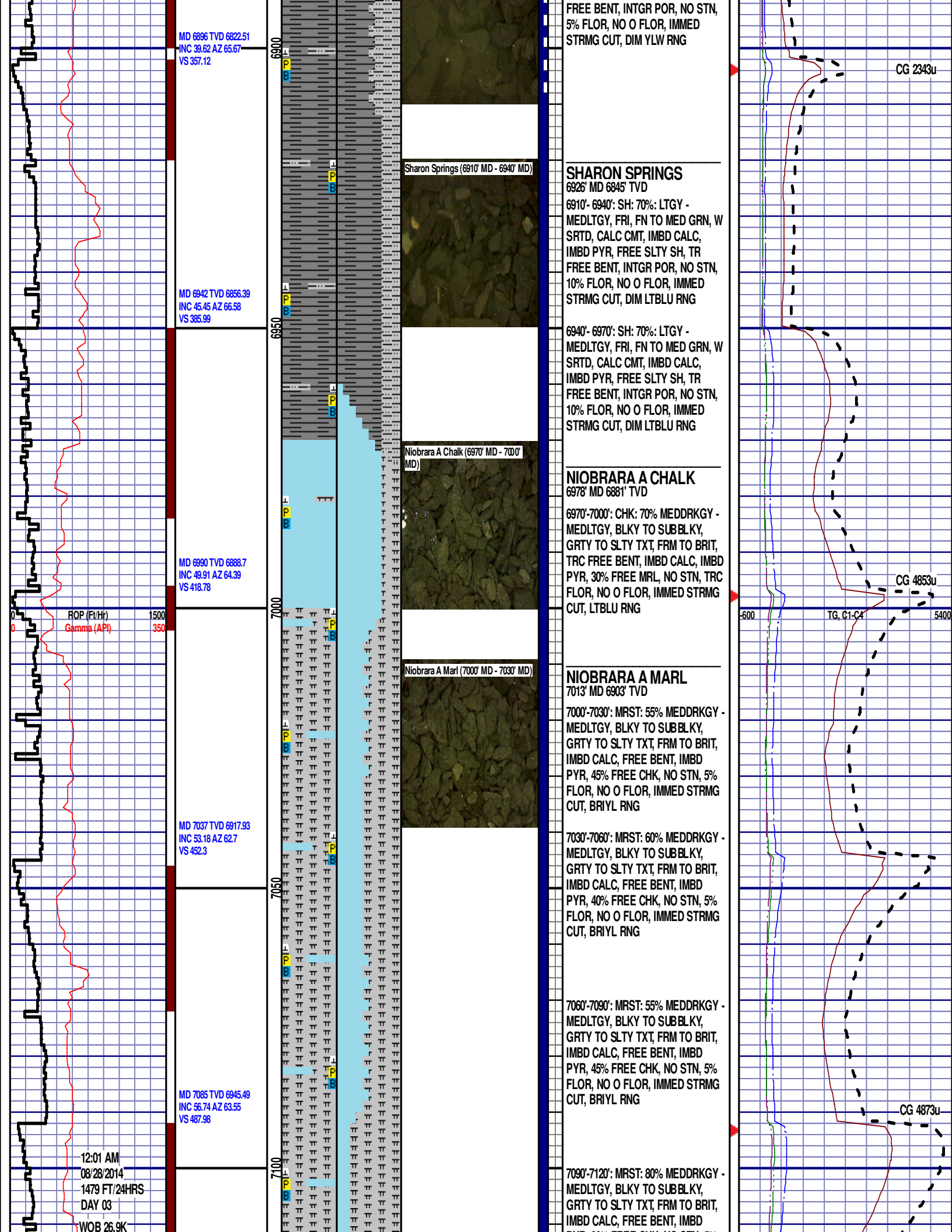












MD 6896 TVD 6822.51
INC 39.62 AZ 65.67
VS 357.12

MD 6942 TVD 6856.39
INC 45.45 AZ 66.58
VS 365.99

MD 6990 TVD 6888.7
INC 49.91 AZ 64.39
VS 418.78

MD 7037 TVD 6917.93
INC 53.18 AZ 62.7
VS 452.3

MD 7085 TVD 6945.49
INC 56.74 AZ 63.55
VS 487.98

12:01 AM
08/28/2014
1479 FT/24HRS
DAY 03

WOB 26.9K

FREE BENT, INTGR POR, NO STN,
5% FLOR, NO O FLOR, IMMED
STRMG CUT, DIM YLW RNG

SHARON SPRINGS

6926' MD 6845' TVD
6910' - 6940': SH: 70%: LTGY -
MEDLTGY, FRI, FN TO MED GRN, W
SRTD, CALC CMT, IMBD CALC,
IMBD PYR, FREE SLTY SH, TR
FREE BENT, INTGR POR, NO STN,
10% FLOR, NO O FLOR, IMMED
STRMG CUT, DIM LTBLU RNG

6940' - 6970': SH: 70%: LTGY -
MEDLTGY, FRI, FN TO MED GRN, W
SRTD, CALC CMT, IMBD CALC,
IMBD PYR, FREE SLTY SH, TR
FREE BENT, INTGR POR, NO STN,
10% FLOR, NO O FLOR, IMMED
STRMG CUT, DIM LTBLU RNG

NIOBRARA A CHALK

6978' MD 6881' TVD
6970' - 7000': CHK: 70% MEDDRKGY -
MEDLTGY, BLKY TO SUBBLKY,
GRTY TO SLTY TXT, FRM TO BRIT,
TRC FREE BENT, IMBD CALC, IMBD
PYR, 30% FREE MRL, NO STN, TRC
FLOR, NO O FLOR, IMMED STRMG
CUT, LTBLU RNG

NIOBRARA A MARL

7013' MD 6903' TVD
7000' - 7030': MRST: 55% MEDDRKGY -
MEDLTGY, BLKY TO SUBBLKY,
GRTY TO SLTY TXT, FRM TO BRIT,
IMBD CALC, FREE BENT, IMBD
PYR, 45% FREE CHK, NO STN, 5%
FLOR, NO O FLOR, IMMED STRMG
CUT, BRIYL RNG

7030' - 7060': MRST: 60% MEDDRKGY -
MEDLTGY, BLKY TO SUBBLKY,
GRTY TO SLTY TXT, FRM TO BRIT,
IMBD CALC, FREE BENT, IMBD
PYR, 40% FREE CHK, NO STN, 5%
FLOR, NO O FLOR, IMMED STRMG
CUT, BRIYL RNG

7060' - 7090': MRST: 55% MEDDRKGY -
MEDLTGY, BLKY TO SUBBLKY,
GRTY TO SLTY TXT, FRM TO BRIT,
IMBD CALC, FREE BENT, IMBD
PYR, 45% FREE CHK, NO STN, 5%
FLOR, NO O FLOR, IMMED STRMG
CUT, BRIYL RNG

7090' - 7120': MRST: 80% MEDDRKGY -
MEDLTGY, BLKY TO SUBBLKY,
GRTY TO SLTY TXT, FRM TO BRIT,
IMBD CALC, FREE BENT, IMBD

CG 2343u

CG 4853u

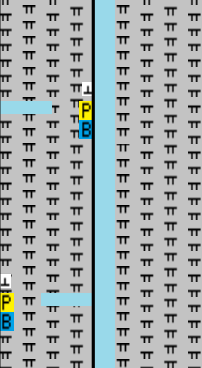
CG 4873u

PP 3971
RPM 0
SPM 78/78

MD 7132 TVD 6969.71
INC 61.18 AZ 64.5
VS 524.8

7150

00



PYR, 20% FREE CHK, NO STN, 5%
FLOR, NO O FLOR, IMMED STRMG
CUT, BRIYL RNG

7120'-7150': MRST: 80% MEDDRKGY -
MEDLTGY, BLKY TO SUBBLKY,
GRTY TO SLTY TXT, FRM TO BRIT,
IMBD CALC, FREE BENT, IMBD
PYR, 20% FREE CHK, NO STN, 5%
FLOR, NO O FLOR, IMMED STRMG
CUT, BRIYL RNG

END OF VERTICAL LOG @ 7150' MD
ON 8/29/14. CONTINUED ON
HORIZONTAL LOG.

