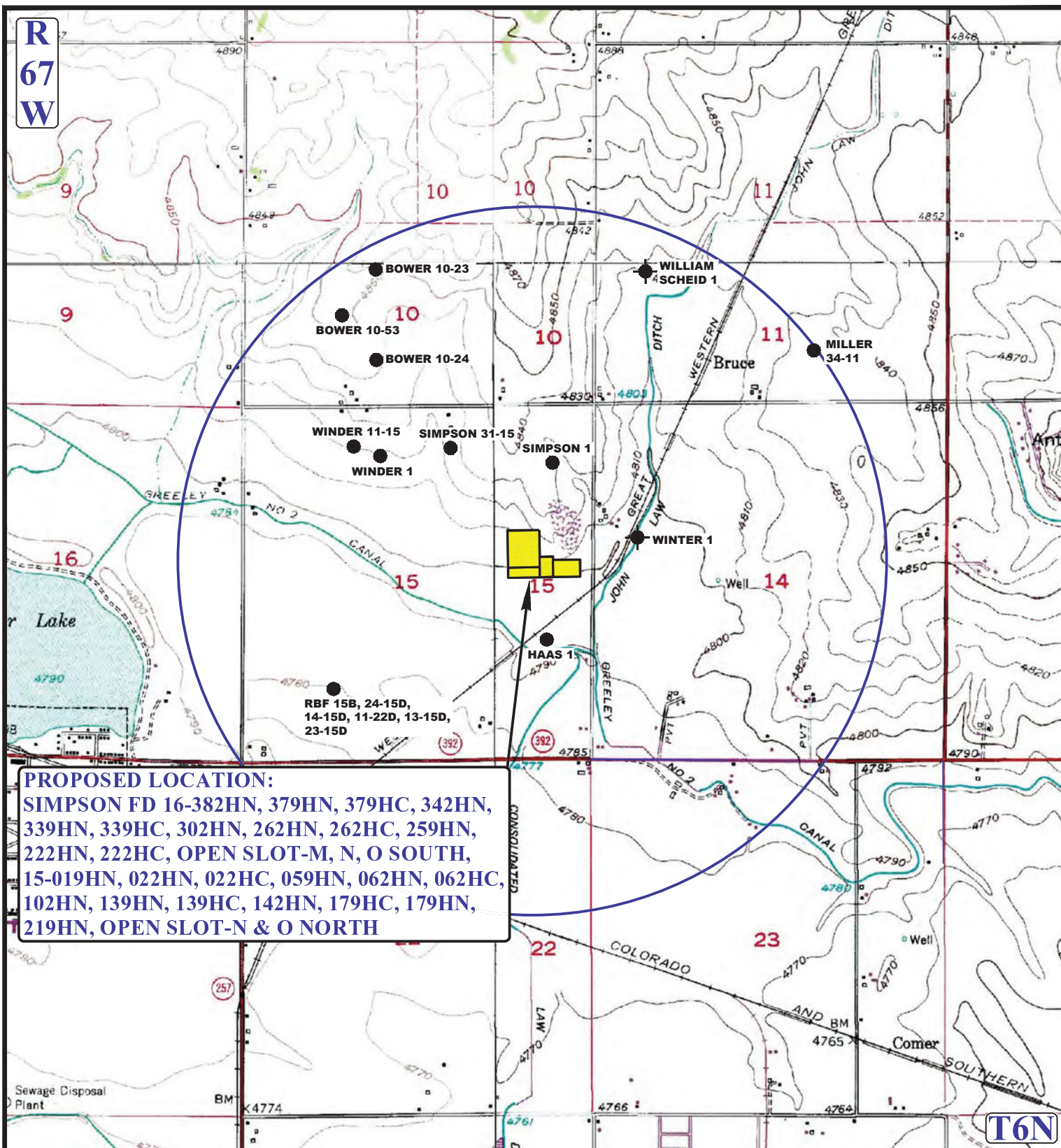


R
67
W



PROPOSED LOCATION:
 SIMPSON FD 16-382HN, 379HN, 379HC, 342HN,
 339HN, 339HC, 302HN, 262HN, 262HC, 259HN,
 222HN, 222HC, OPEN SLOT-M, N, O SOUTH,
 15-019HN, 022HN, 022HC, 059HN, 062HN, 062HC,
 102HN, 139HN, 139HC, 142HN, 179HC, 179HN,
 219HN, OPEN SLOT-N & O NORTH

LEGEND:

- ⊗ DISPOSAL WELLS
- PRODUCING WELLS
- SHUT IN WELLS
- ABANDONED WELLS
- TEMPORARILY ABANDONED

GREAT WESTERN OIL & GAS COMPANY

SIMPSON FD 16-382HN, 379HN, 379HC, 342HN, 339HN,
 339HC, 302HN, 262HN, 262HC, 259HN, 222HN, 222HC,
 OPEN SLOT-M, N, O SOUTH, 15-019HN, 022HN, 022HC,
 059HN, 062HN, 062HC, 102HN, 139HN, 139HC, 142HN,
 179HC, 179HN, 219HN, OPEN SLOT-N & O NORTH
 SECTION 15, T6N, R67W, 6th P.M.
 SE 1/4 NE 1/4



UELS, LLC
 Corporate Office * 85 South 200 East
 Vernal, UT 84078 * (435) 789-1017

DRAWN BY: J.L.G.

DATE DRAWN: 12-31-14

SCALE: 1" = 2000'

REV: 00-00-00

WELL PROXIMITY MAP

TOPO C