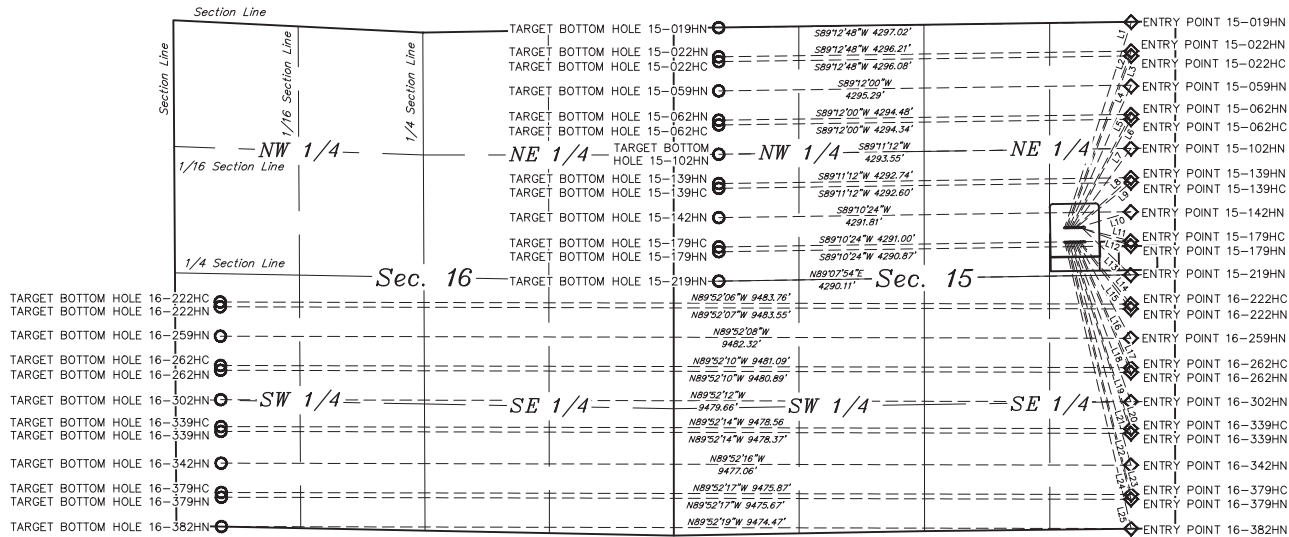




- WELLHEAD
- ◊ Entry Point
- Target Bottom Hole



LINE TABLE		
LINE	DIRECTION	LENGTH
L1	N17°55'37"E	2254.46'
L2	N20°13'31"E	1961.74'
L3	N20°19'15"E	1909.26'
L4	N23°32'13"E	1621.14'
L5	N28°08'09"E	1339.30'
L6	N28°36'14"E	1287.86'
L7	N36°01'10"E	1021.77'
L8	N48°17'52"E	783.55'
L9	N50°25'56"E	739.37'
L10	N73°15'02"E	578.72'
L11	S75°34'21"E	556.07'
L12	S70°10'14"E	556.45'
L13	S45°52'59"E	707.21'
L14	S38°52'18"E	830.08'
L15	S37°36'17"E	878.49'
L16	S28°49'53"E	1143.59'
L17	S23°27'26"E	1424.22'
L18	S23°13'37"E	1475.97'
L19	S19°46'19"E	1766.29'
L20	S17°31'08"E	2036.37'
L21	S17°30'14"E	2088.41'
L22	S15°29'27"E	2410.06'
L23	S14°05'01"E	2708.74'
L24	S14°08'20"E	2760.63'
L25	S13°01'28"E	3060.54'

NOTES

GREAT WESTERN OIL & GAS COMPANY
SIMPSON FD 16-382HN, 379HN, 379HC, 342HN, 339HN,
339HC, 302HN, 262HN, 259HN, 222HN, 222HC,
OPEN SLOT-M, N, O SOUTH, 15-019HN, 022HN, 022HC,
059HN, 062HN, 062HC, 102HN, 139HN, 139HC, 142HN,
179HC, 179HN, 219HN, OPEN SLOT-N & O NORTH
SECTION 15, 16N, R67W, 6th P.M.
SE 1/4 NE 1/4



UELS, LLC
Corporate Office * 85 South 200 East
Vernal, UT 84078 * (435) 789-1017

DRAWN BY: J.W.	DATE DRAWN: 12-29-14
SCALE: 1" = 1000'	REVISED: 00-00-00
MULTI-Well PLAN	FIGURE #6