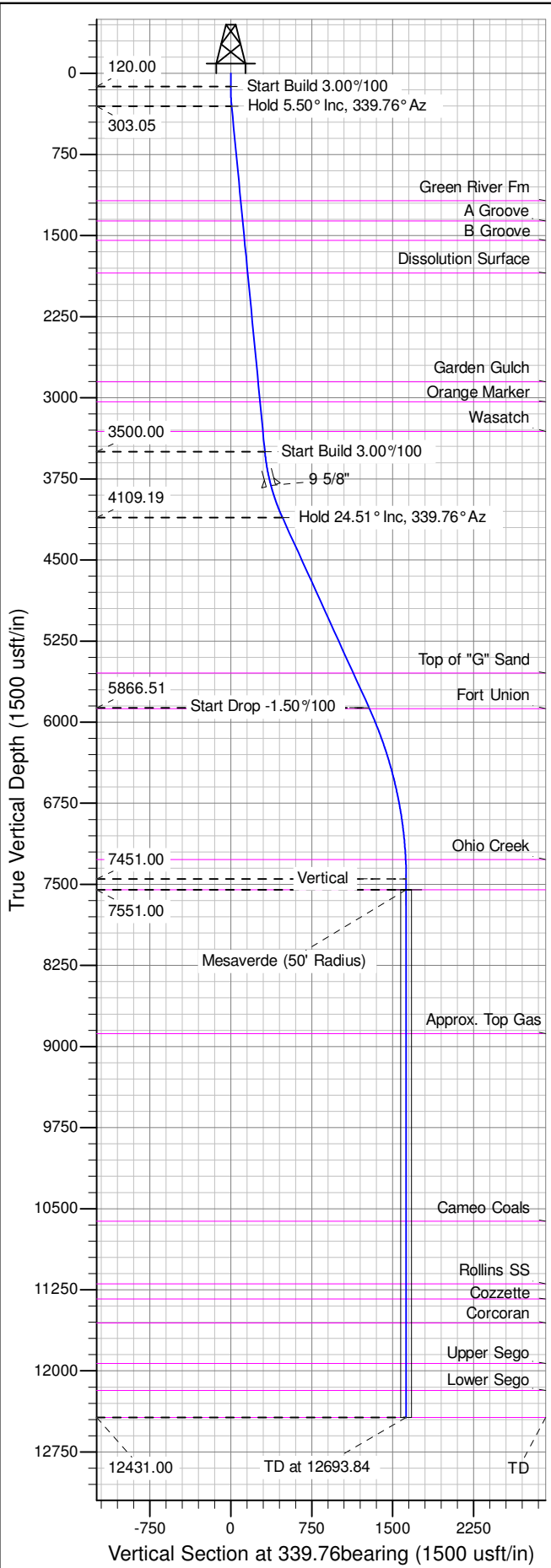
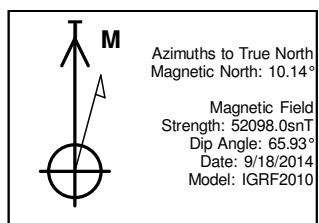
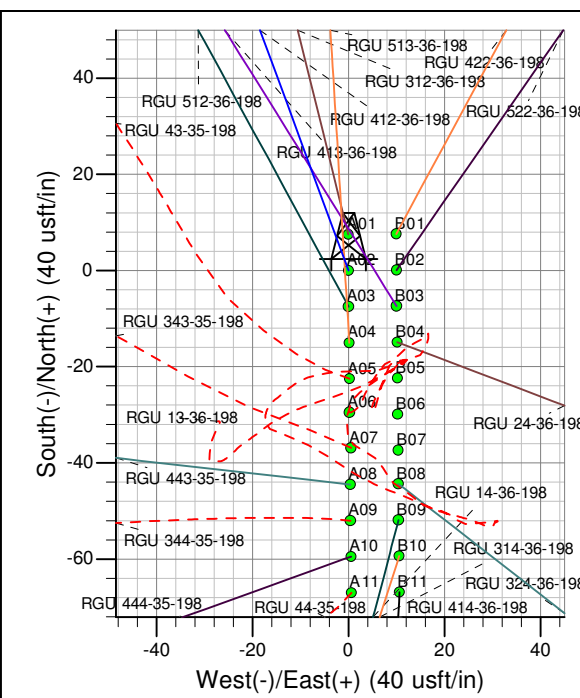
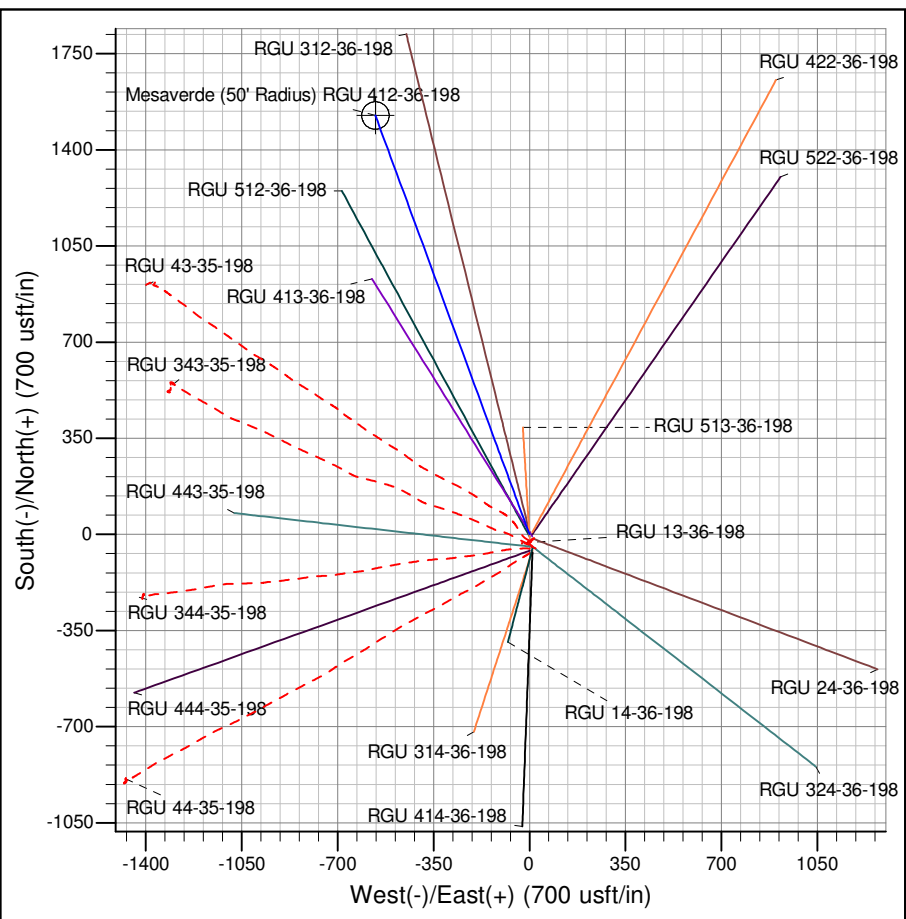




Well Name: RGU 412-36-198  
Surface Location: RGU 13-36-198 Pad  
North American Datum 1983 , US State Plane 1983 , Colorado Central Zone  
Ground Elevation: 6680.00  
+N/-S +E/-W Northing Easting Latitude Longitude Slot  
0.00 0.00 1771356.40 2201047.50 39.916798 -108.348648 A02  
KELLY BUSHING @ 6706.00usft (Cyclone 29 (26' RKB) mab)



ANNOTATIONS									
TVD	MD	Inc	Azi	+N/-S	+E/-W	Vsect	Departure	Annotation	
120.00	120.00	0.00	0.00	0.00	0.00	0.00	0.00	0.00	Start Build 3.00°/100
303.05	303.33	5.50	339.76	8.25	-3.04	8.79	8.79	8.79	Hold 5.50° Inc, 339.76° Az
3500.00	3515.07	5.50	339.76	297.07	-109.54	316.62	316.62	316.62	Start Build 3.00°/100
4109.19	4148.67	24.51	339.76	450.27	-166.01	479.90	479.90	479.90	Hold 24.51° Inc, 339.76° Az
5866.51	6079.98	24.51	339.76	1201.97	-443.13	1281.05	1281.05	1281.05	Start Drop -1.50°/100
7451.00	7713.84	0.00	0.00	1524.87	-562.16	1625.19	1625.19	1625.19	Vertical
7551.00	7813.84	0.00	0.00	1524.87	-562.16	1625.19	1625.19	1625.19	Mesaverde
12431.00	12693.84	0.00	0.00	1524.87	-562.16	1625.19	1625.19	1625.19	TD at 12693.84



Project: RG 36-01S-098W  
Site: RGU 13-36-198 Pad  
Well: RGU 412-36-198  
Design #1 18Sep14 mab