



Kerr-McGee Oil & Gas Onshore LP

A subsidiary of Anadarko Petroleum Corporation

1099 18th Street
Denver, CO 80202
720-929-6000

January 5, 2015

Matt Lepore
Director, Colorado Oil and Gas Conservation Commission
Department of Natural Resources
The Chancery Building
1120 Lincoln Street, Suite 801
Denver, CO 80203

Re: **30 Day Certification Letter - 318A.e**
ICEMAN STATE 12C-16HZ (Doc No. 400762297)
Township 3 North, Range 67 West
Section 15: SWNW
Unit Acreage: 480
Unit Spacing: 03N-67W-Sec 15 NWSW, SWNW
03N-67W-Sec 16 N2S2, S2N2
03N-67W-Sec 17 NESE, SENE
Weld County, Colorado

Dear Director Lepore:

Kerr McGee Oil and Gas Onshore LP ("KMG") hereby certifies that KMG owns one hundred percent (100%) of the leasehold interest in the mineral rights in the proposed spacing unit. KMG hereby respectfully requests approval of this boundary well.

If you have any questions or issues regarding this permit, please contact Cheryl Light at (720) 929-6461.

Very truly yours,

Kerr-McGee Oil and Gas Onshore LP

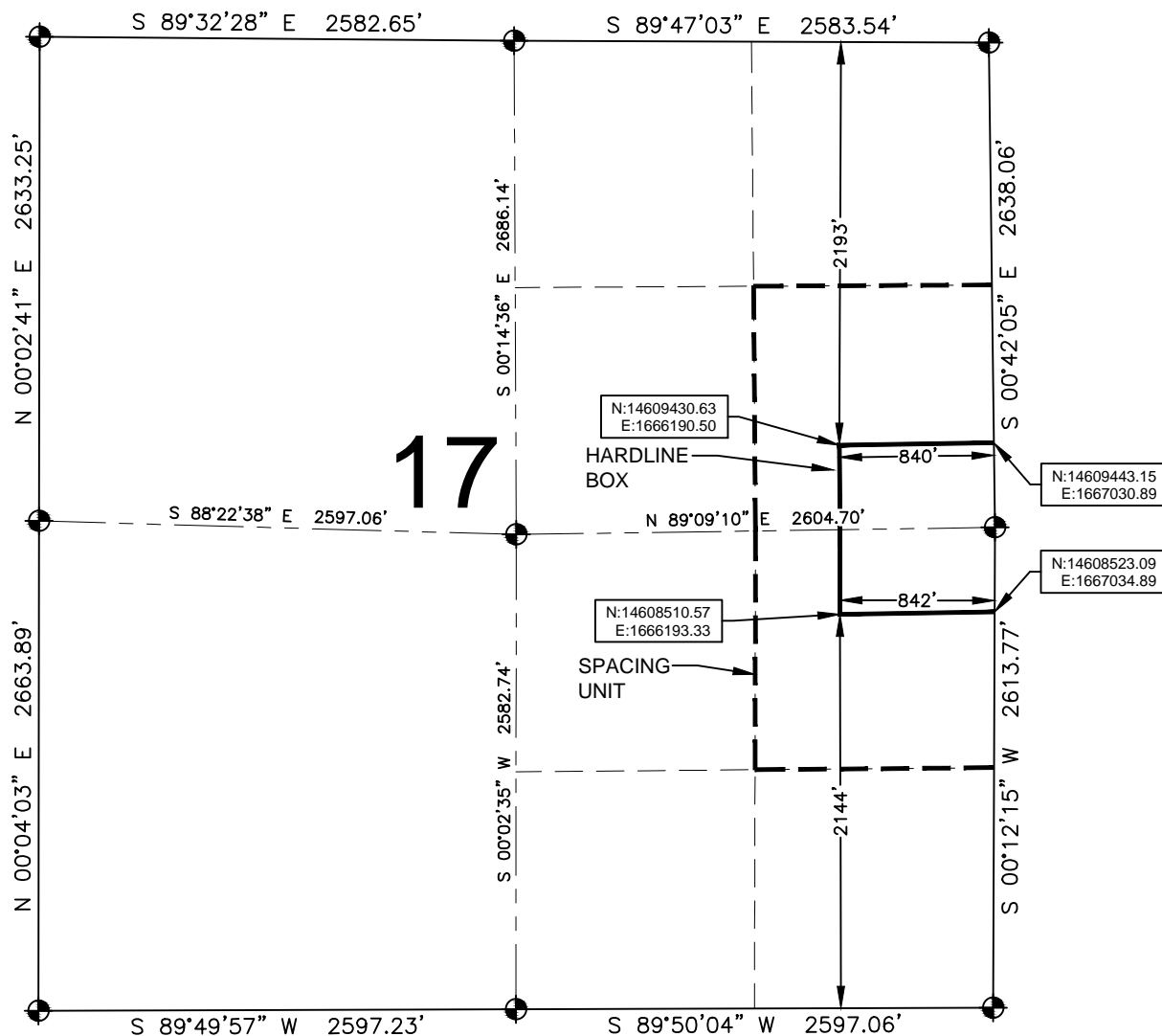
A handwritten signature in black ink, appearing to read 'Mike McConaughy'.

Mike McConaughy
Sr. Regulatory Analyst

Enclosure

HARDLINE EXHIBIT: ICEMAN STATE 12C-16HZ

SECTION 17, TOWNSHIP 3 NORTH, RANGE 67 WEST, 6TH P.M.



LEGEND

- = EXISTING MONUMENT
- = PROPOSED HEEL
- = CALCULATED POSITION
- ◆ = BOTTOM HOLE
- BH = BOTTOM HOLE

HEEL LOCATION

NAD83
 LATITUDE= 40.224700°
 LONGITUDE= 104.885299°
 LATITUDE= 40°13'28.919"
 LONGITUDE= 104°53'07.077"

QRT/QRT SECTIONS WITHIN PATH OF THE HARDLINE

SENE, SEC. 17
 NESE, SEC. 17

BOTTOM HOLE LOCATION

NAD83
 LATITUDE= 40.224882°
 LONGITUDE= 104.903383°
 LATITUDE= 40°13'29.575"
 LONGITUDE= 104°54'12.179"

AVAILABLE FOOTAGE

6830'

NOTES:

- THIS DOCUMENT IS NOT A LAND SURVEY PLAT OR IMPROVEMENT SURVEY PLAT. THIS DOCUMENT DOES NOT REFLECT A FIELD SURVEY. SECTION BREAKDOWN, MONUMENTATION AND HORIZONTAL POSITIONS SHOWN ARE BASED ON THE HEEL AND BOTTOM HOLE LOCATION PROVIDED BY ANADARKO PETROLEUM CORPORATION

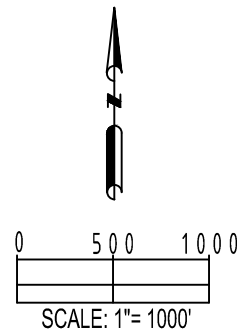
PREPARED BY:



SHEET 1 OF 3

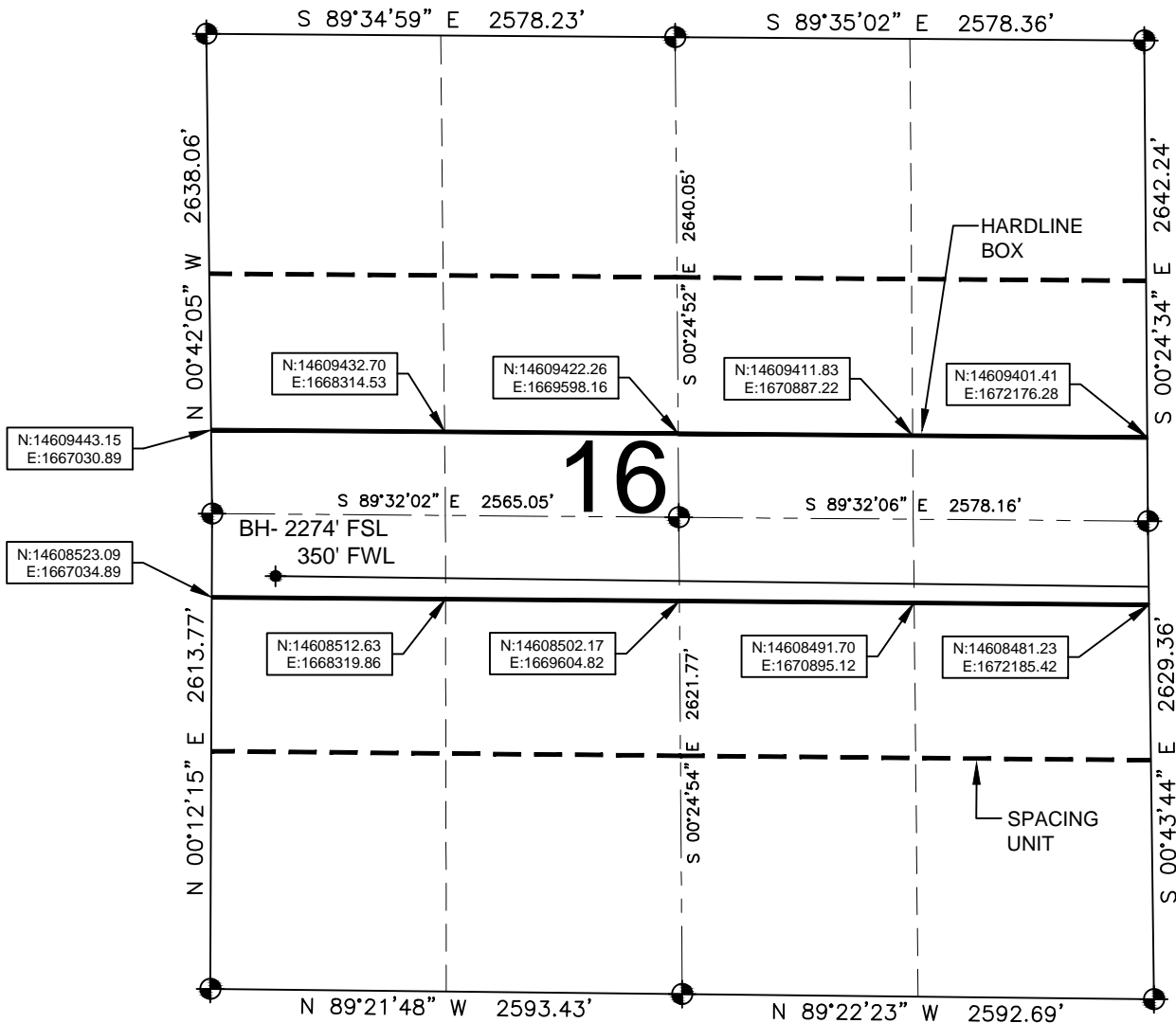
DRAWING DATE:
12-09-14
BY: DRF
CHECKED: SMF

HEEL LOCATION:
NW 1/4 SW 1/4,
SEC. 15, T3N, R67W, 6TH P.M.
WELD COUNTY, COLORADO



HARDLINE EXHIBIT: ICEMAN STATE 12C-16HZ

SECTION 16, TOWNSHIP 3 NORTH, RANGE 67 WEST, 6TH P.M.



LEGEND

- = EXISTING MONUMENT
- = PROPOSED HEEL
- ◆ = BOTTOM HOLE
- BH = BOTTOM HOLE

QRT/QRT SECTIONS WITHIN PATH OF THE HARDLINE

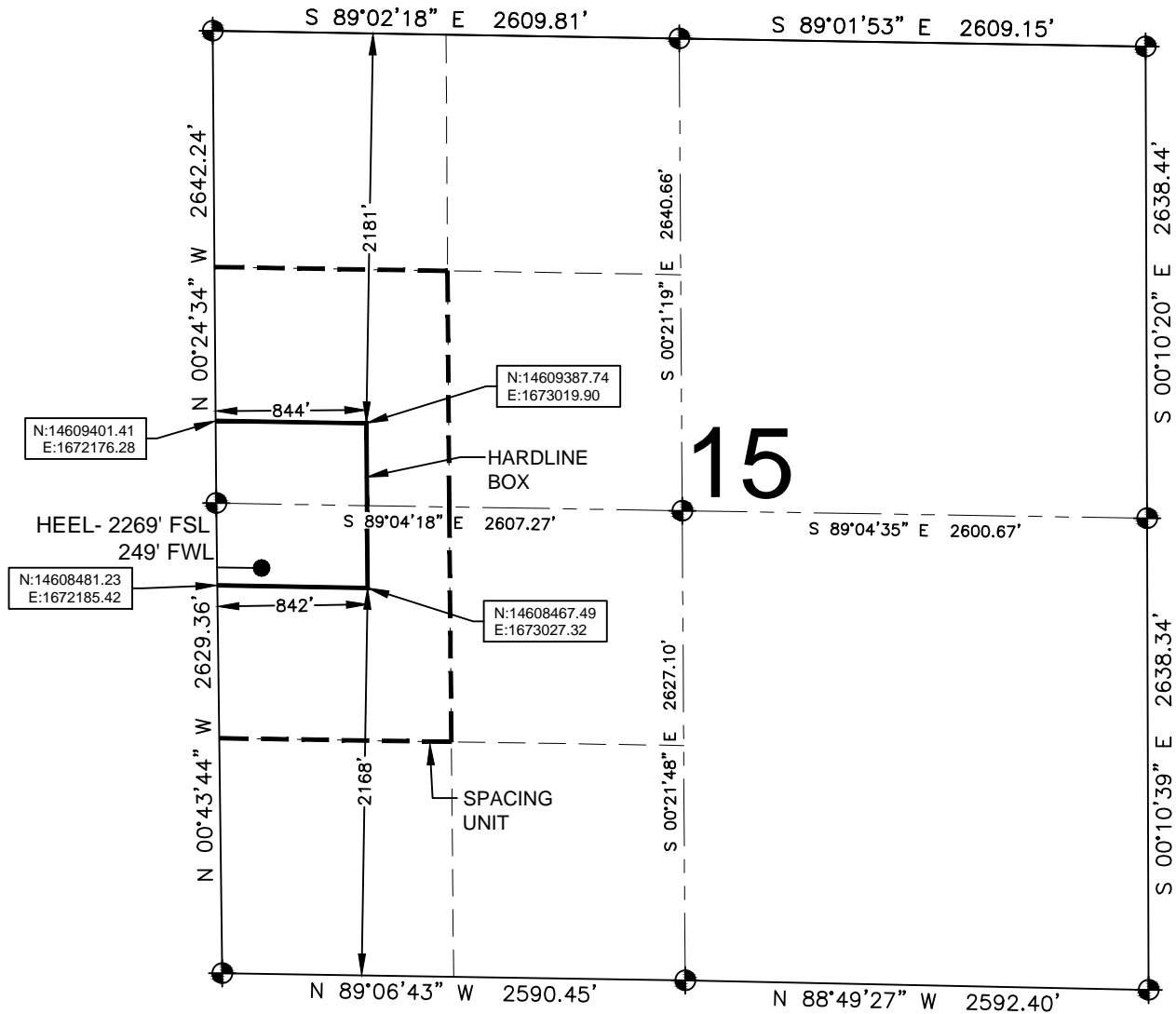
- SWNW, SEC. 16
- SENW, SEC. 16
- SWNE, SEC. 16
- SENE, SEC. 16
- NWSW, SEC. 16
- NESW, SEC. 16
- NWSE, SEC. 16
- NESE, SEC. 16

NOTES:

- THIS DOCUMENT IS NOT A LAND SURVEY PLAT OR IMPROVEMENT SURVEY PLAT. THIS DOCUMENT DOES NOT REFLECT A FIELD SURVEY. SECTION BREAKDOWN, MONUMENTATION AND HORIZONTAL POSITIONS SHOWN ARE BASED ON THE HEEL AND BOTTOM HOLE LOCATION PROVIDED BY ANADARKO PETROLEUM CORPORATION

HARDLINE EXHIBIT: ICEMAN STATE 12C-16HZ

SECTION 15, TOWNSHIP 3 NORTH, RANGE 67 WEST, 6TH P.M.



LEGEND

- = EXISTING MONUMENT
- = PROPOSED HEEL
- ◆ = BOTTOM HOLE
- BH = BOTTOM HOLE

QRT/QRT SECTIONS WITHIN PATH OF THE HARDLINE

- SWNW, SEC. 15
- NWSW, SEC. 15

NOTES:

- THIS DOCUMENT IS NOT A LAND SURVEY PLAT OR IMPROVEMENT SURVEY PLAT. THIS DOCUMENT DOES NOT REFLECT A FIELD SURVEY. SECTION BREAKDOWN, MONUMENTATION AND HORIZONTAL POSITIONS SHOWN ARE BASED ON THE HEEL AND BOTTOM HOLE LOCATION PROVIDED BY ANADARKO PETROLEUM CORPORATION