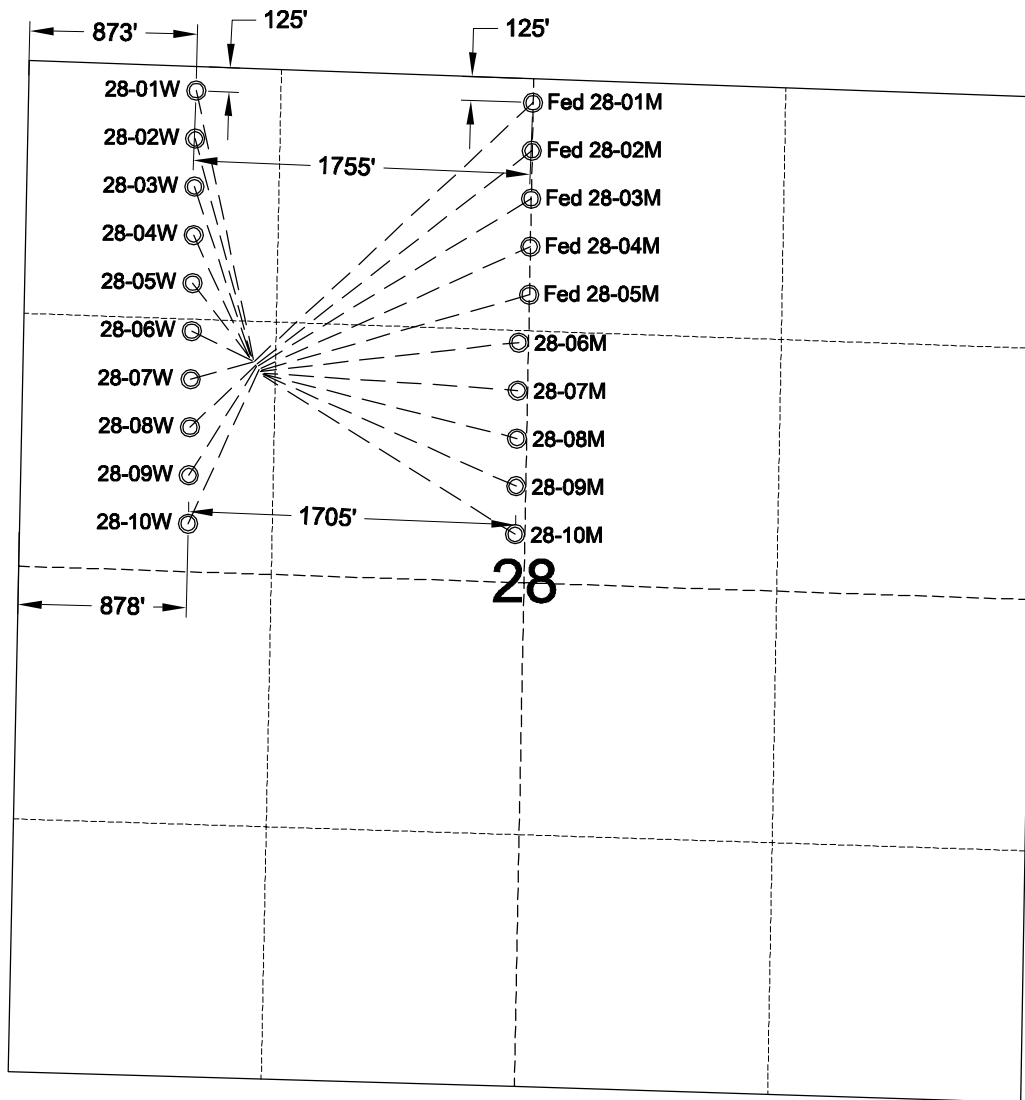
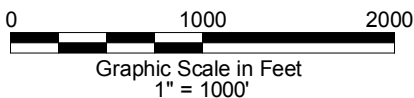


MULTI-WELL PLAN



○ PROPOSED BOTTOM HOLE LOCATION

12/18/14



GEO SURV

LAND SURVEYING AND MAPPING
LAFAYETTE - WINTER PARK
Ph 303 666 0379 Fx 303 665 6320

PICEANCE ENERGY, LLC
PICEANCE 28-05 PAD

SW1/4 NW1/4 SECTION 28 T9S R93W
6th PM MESA COUNTY COLORADO