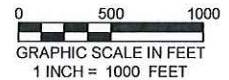
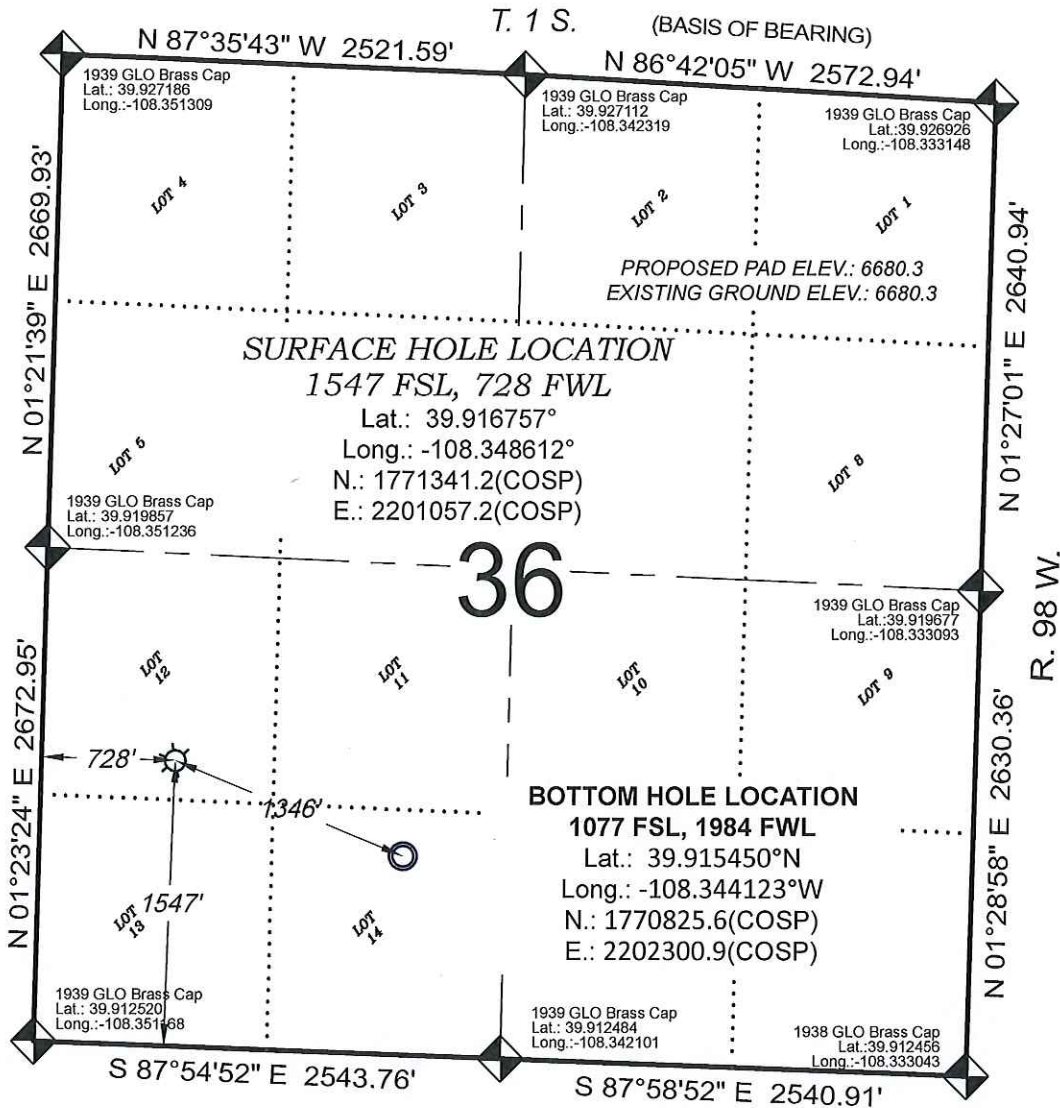


# Federal RGU 24-36-198



THERE ARE NO VISIBLE  
IMPROVEMENTS WITHIN 500'  
OF THIS LOCATION

## SURVEYORS STATEMENT

I, MICHAEL J. LANGHORNE, A REGISTERED LAND SURVEYOR IN THE STATE OF COLORADO DO HEREBY CERTIFY THAT THE SURVEY SHOWN HEREON WAS PREPARED UNDER MY DIRECT SUPERVISION AND HAS BEEN STAKED ON THE GROUND AS SHOWN ON THE PLAT AND CHECKING THAT THIS MAP IS A TRUE REPRESENTATION THEREOF.

MICHAEL J. LANGHORNE, COLORADO REGISTRATION NO. 36572  
FOR AND ON BEHALF OF  
BOOKCLIFF SURVEY SERVICES, INC.

## REFERENCES

- 1) DEPENDENT RESURVEY AND SUBDIVISION OF CERTAIN SECTIONS  
T. 1 S., R. 98 W., 6th P.M (GLO PLAT)
- 2) U.S.G.S. QUAD: Rock School and Square S Ranch, CO

136 East Third Street  
Rifle, Colorado  
81650 Ph. (970)  
625-2720 Fax (970)  
625-2773

**BOOKCLIFF**  
Survey Services, Inc.

SURVEY DATE: 6/20/14  
MAP DATE: 11/4/14  
SCALE: 1" = 1000'  
PLAT: 1 of 1  
PROJECT: Highlands

## - LEGEND -

FIELD LOCATED SECTION  
MONUMENTS AS DESCRIBED

FIELD SURVEYED  
WELL LOCATION

CALCULATED BOTTOM  
HOLE LOCATION

CALCULATED SECTION  
CORNER LOCATION

## NOTES

- 1) ELEVATIONS BASED ON N.A.V.D. 1988 PUBLISHED COORDINATES.
- 2) LATITUDES AND LONGITUDES ARE BASED ON NAD 83, PUBLISHED COORDINATES.
- 3) STATE PLANE COORDINATES ARE BASED ON COLORADO CENTRAL ZONE, U.S. SURVEY FEET.
- 4) ELEVATION MASK SET TO 15°
- 5) GPS OPERATOR J. KIRKPATRICK, OBSERVED A PDOP OF 2.0 FOR SURVEY POINT NUMBER 80438.
- 6) SURFACE AND BOTTOM HOLE LOCATIONS ARE MEASURED 90° FROM SECTION LINES.

**WELL LOCATION PLAT Prepared for:**  
**WPXENERGY**

WPX Energy Rocky Mountain, LLC

NW1/4 SW1/4, SECTION 36  
T. 1 S., R. 98 W. of the 6th. P.M.  
Rio BLANCO COUNTY, COLORADO