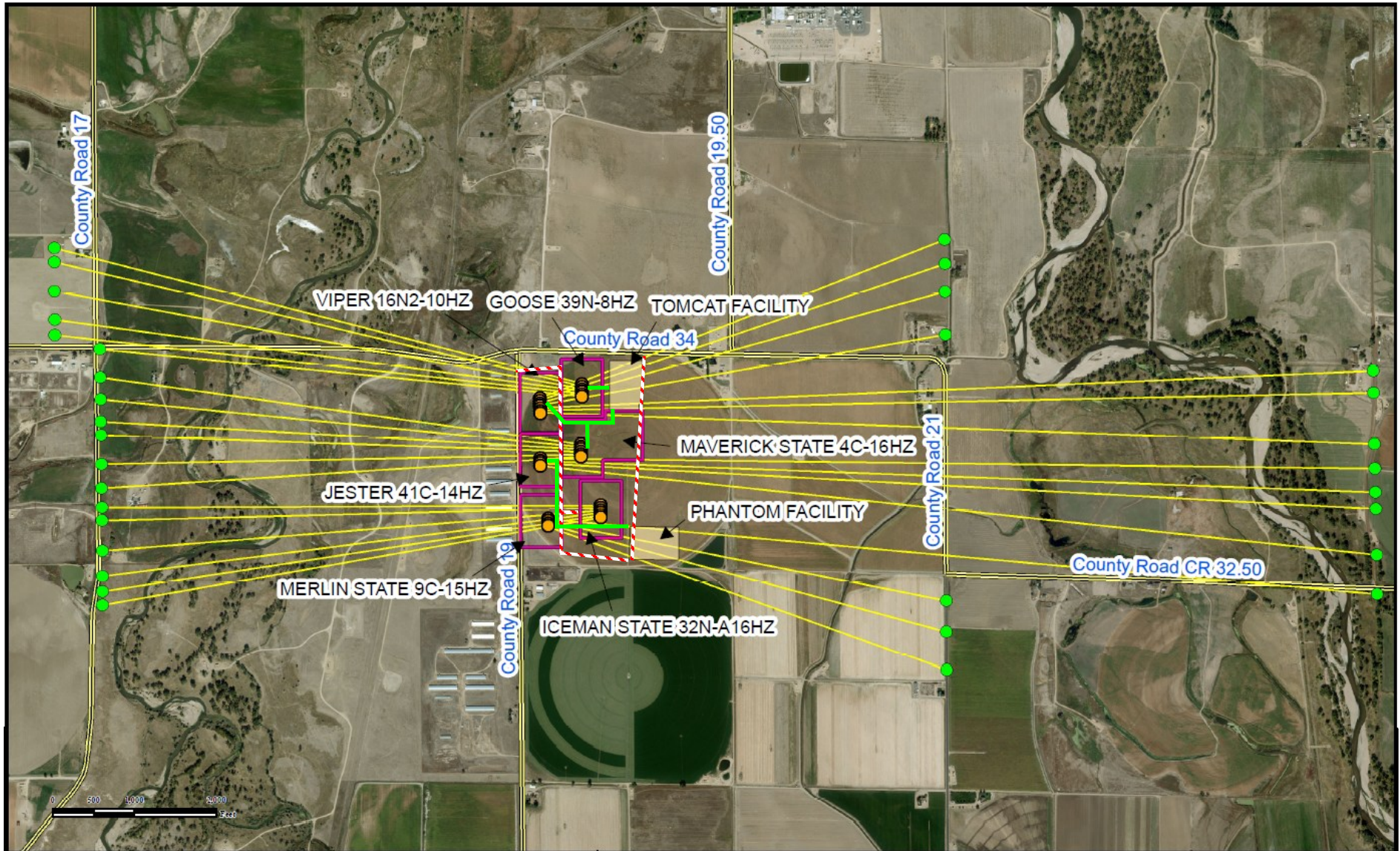


ACCESS ROAD MAP



Legend

- Proposed Well
- Proposed Bottom Hole
- Disturbance Area
- Proposed Facility
- Proposed Bore Path
- Proposed Flowlines
- - - - Proposed Access

Location Analysis

TOPGUN

Horizontal Multi Well Pad

SECTION 15, TOWNSHIP 3 NORTH, RANGE 67 WEST OF THE 6TH PRINCIPAL MERIDIAN



Use our resources to find yours!
www.petro-fs.com
 (303) 928-7128

Field Date: 09/02/2014
 Drafting Date: 01/08/2015
 Drafter: FMB
 Revision:

Data Sources:
 - Aerial courtesy of Anadarko Petroleum Corporation (2010)

Prepared for:



KERR-MCGEE OIL & GAS ONSHORE LP