



Kerr-McGee Oil & Gas Onshore LP

A subsidiary of Anadarko Petroleum Corporation

1099 18th Street
Denver, CO 80202
720-929-6000

January 5, 2015

Matt Lepore
Director, Colorado Oil and Gas Conservation Commission
Department of Natural Resources
The Chancery Building
1120 Lincoln Street, Suite 801
Denver, CO 80203

Re: **30 Day Certification Letter - 318A.e**
GOOSE 9C-8HZ (Doc No. 400762170)
Township 3 North, Range 67 West
Section 15: NWNW
Unit Acreage: 480
Unit Spacing: 03N-67W-Sec 08 E2SE
03N-67W-Sec 09 S2
03N-67W-Sec 10 W2SW
Weld County, Colorado

Dear Director Lepore:

Kerr-McGee Oil and Gas Onshore LP ("KMG") hereby certifies that a thirty (30) day notice has been given by certified mail to all mineral owners in the proposed wellbore spacing unit. We have not received any objections to such well location, proposed spacing unit, or additional producing formation. KMG hereby respectfully requests approval of this boundary well.

If you have any questions or issues regarding this permit, please contact Cheryl Light at (720) 929-6461.

Very truly yours,

Kerr-McGee Oil and Gas Onshore LP

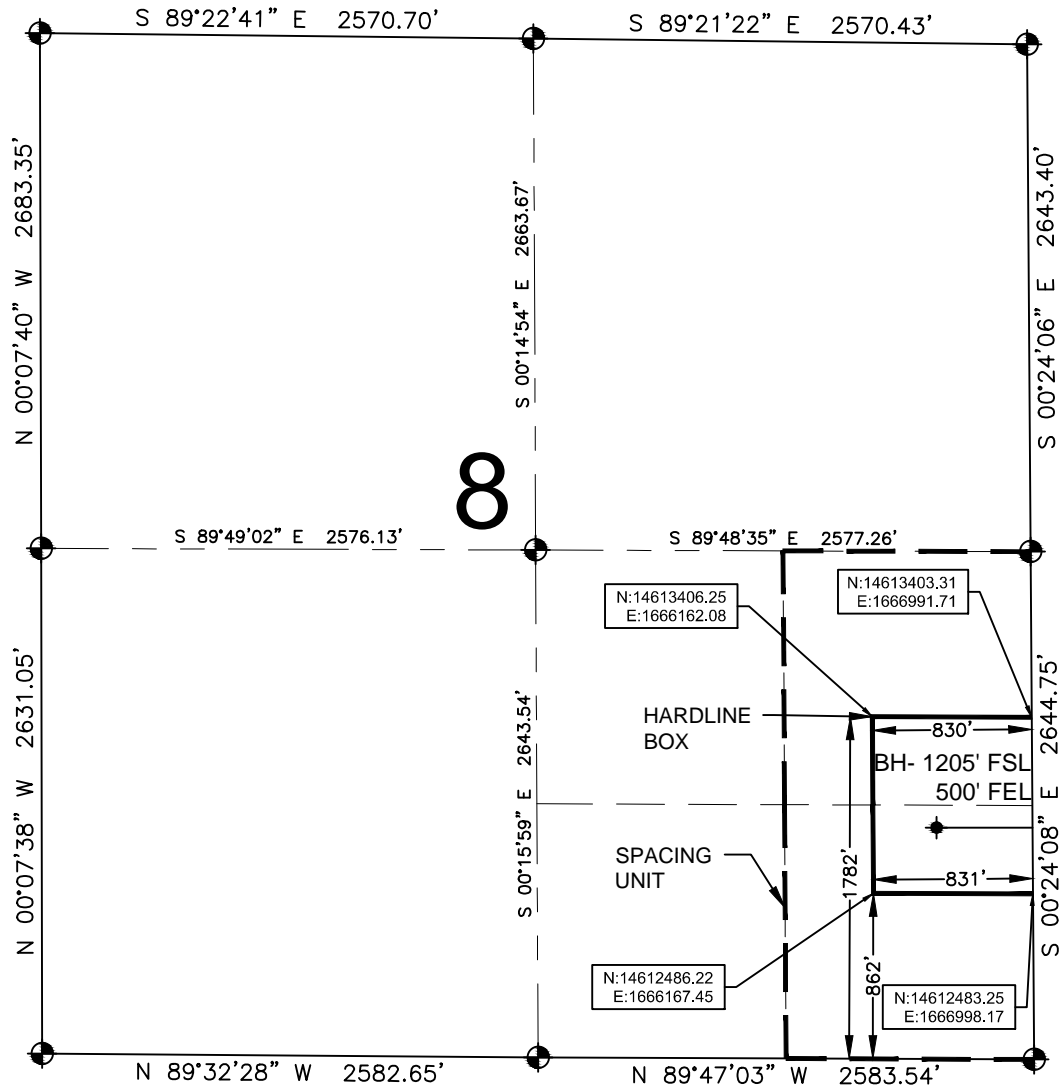
A handwritten signature in black ink, appearing to read 'Mike McConaughy'.

Mike McConaughy
Sr. Regulatory Analyst

Enclosure

HARDLINE EXHIBIT: GOOSE 9C-8HZ

SECTION 8, TOWNSHIP 3 NORTH, RANGE 67 WEST, 6TH P.M.



LEGEND

- = EXISTING MONUMENT ● = PROPOSED HEEL ○ = CALCULATED POSITION
BH = BOTTOM HOLE

HEEL LOCATION

NAD83
LATITUDE= 40.236403°
LONGITUDE= 104.886264°

LATITUDE= 40°14'11.051"
LONGITUDE= 104°53'10.550"

QRT/QRT SECTIONS WITHIN PATH OF THE HARDLINE

NESE, SEC. 8
SESE, SEC. 8

BOTTOM HOLE LOCATION

NAD83
LATITUDE= 40.236388°
LONGITUDE= 104.906554°

LATITUDE= 40°14'10.997"
LONGITUDE= 104°54'23.593"

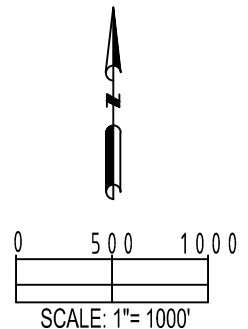
AVAILABLE FOOTAGE

6837'

NOTES:

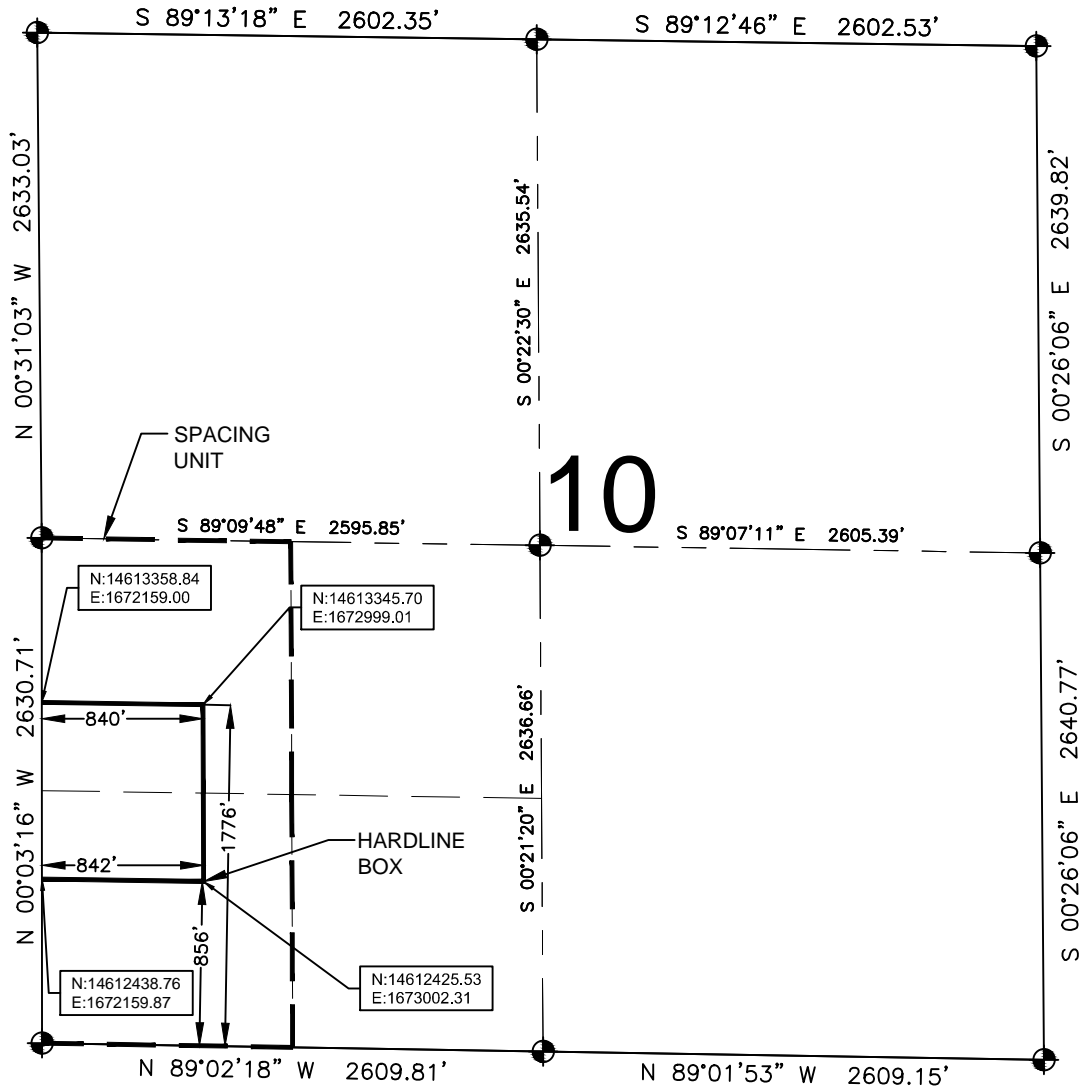
1. THIS DOCUMENT IS NOT A LAND SURVEY PLAT OR IMPROVEMENT SURVEY PLAT. THIS DOCUMENT DOES NOT REFLECT A FIELD SURVEY. SECTION BREAKDOWN, MONUMENTATION AND HORIZONTAL POSITIONS SHOWN ARE BASED ON THE HEEL AND BOTTOM HOLE LOCATION PROVIDED BY ANADARKO PETROLEUM CORPORATION

SECTION 9, TOWNSHIP 3 NORTH, RANGE 67 WEST, 6TH P.M.



HARDLINE EXHIBIT: GOOSE 9C-8HZ

SECTION 10, TOWNSHIP 3 NORTH, RANGE 67 WEST, 6TH P.M.



LEGEND

- = EXISTING MONUMENT ● = BOTTOM HOLE
● = PROPOSED HEEL BH = BOTTOM HOLE

QRT/QRT SECTIONS WITHIN PATH OF THE HARDLINE

SWSW, SEC. 10
NWSW, SEC. 10

NOTES:

- THIS DOCUMENT IS NOT A LAND SURVEY PLAT OR IMPROVEMENT SURVEY PLAT. THIS DOCUMENT DOES NOT REFLECT A FIELD SURVEY. SECTION BREAKDOWN, MONUMENTATION AND HORIZONTAL POSITIONS SHOWN ARE BASED ON THE HEEL AND BOTTOM HOLE LOCATION PROVIDED BY ANADARKO PETROLEUM CORPORATION