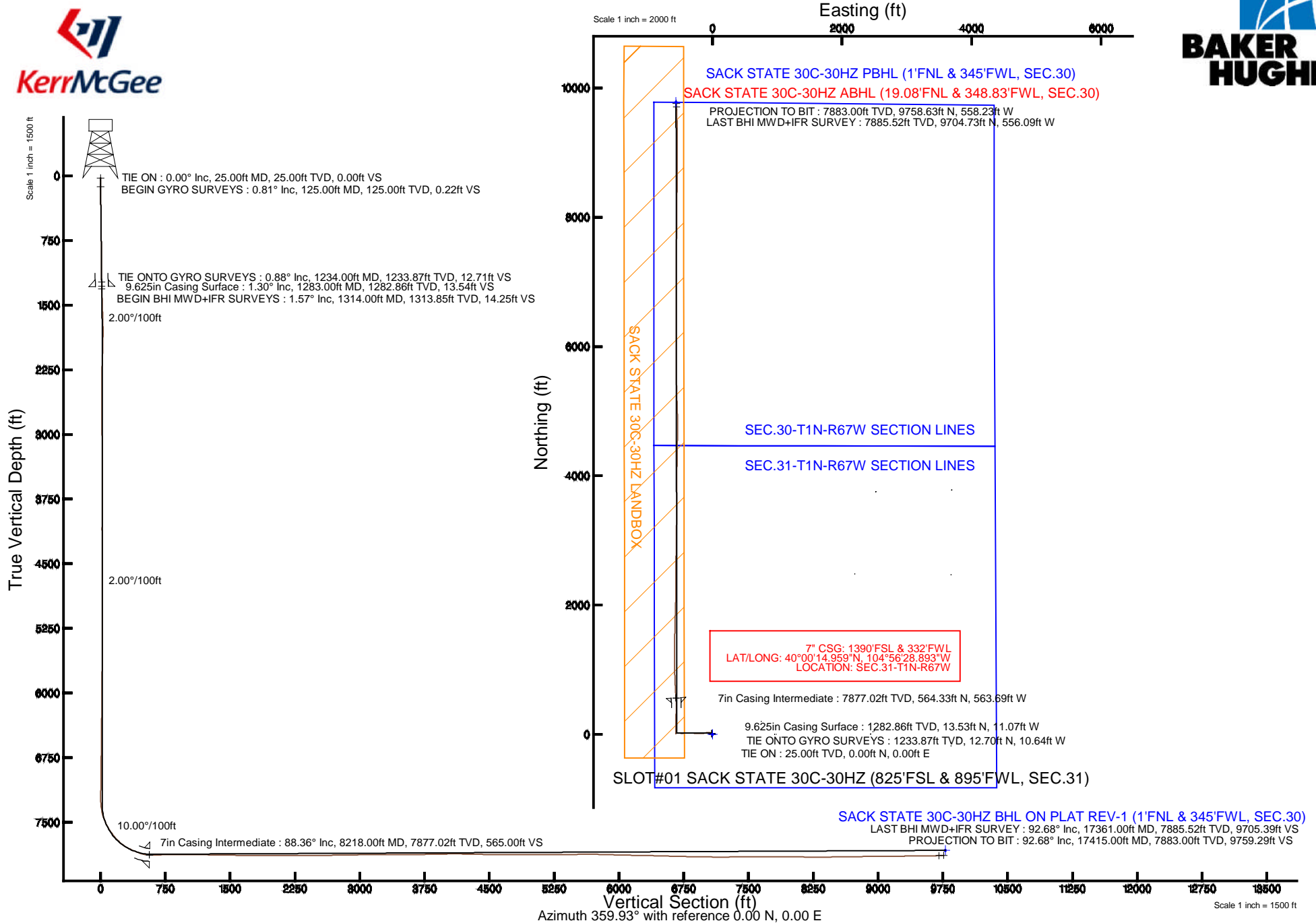


# KERR-MCGEE OIL & GAS ONSHORE LP

Location: COLORADO Slot: SLOT#01 SACK STATE 30C-30HZ (825'FSL & 895'FWL, SEC.31)  
 Field: WELD COUNTY (KERR MCGEE) Well: SACK STATE 30C-30HZ  
 Facility: SEC.31-T1N-R67W Wellbore: SACK STATE 30C-30HZ PWB

Plot reference wellpath is SACK STATE 30C-30HZ (REV-A.0) PWP

True vertical depths are referenced to PRECISION 595 (25KB) (RKB)	Grid System: NAD83 / Lambert Colorado SP, Northern Zone (501), US feet
Measured depths are referenced to PRECISION 595 (25KB) (RKB)	North Reference: True north
PRECISION 595 (25KB) (RKB) to Mean Sea Level: 5090 feet	Scale: True distance
Mean Sea Level to Mud line (At Slot: SLOT#01 SACK STATE 30C-30HZ (825'FSL & 895'FWL, SEC.31)): 0 feet	Depths are in feet
Coordinates are in feet referenced to Slot	Created by: robiale01 on 11/19/2014



REFERENCE WELLPATH IDENTIFICATION			
Operator	KERR-MCGEE OIL & GAS ONSHORE LP	Slot	SLOT#01 SACK STATE 30C-30HZ (825'FSL & 895'FWL, SEC.31)
Area	COLORADO	Well	SACK STATE 30C-30HZ
Field	WELD COUNTY (KERR MCGEE)	Wellbore	SACK STATE 30C-30HZ AWB <125-17415>
Facility	SEC.31-T1N-R67W		

REPORT SETUP INFORMATION			
Projection System	NAD83 / Lambert Colorado SP, Northern Zone (501), US feet	Software System	WellArchitect® 4.0.0
North Reference	True	User	Robiale01
Scale	0.999966	Report Generated	11/18/2014 at 12:34:56 PM
Convergence at slot	n/a	Database/Source file	WellArchitectDB/SACK_STATE_30C-30HZ_AWB_125-17415_.xml

WELLPATH LOCATION						
	Local coordinates		Grid coordinates		Geographic coordinates	
	North[ft]	East[ft]	Easting[US ft]	Northing[US ft]	Latitude	Longitude
Slot Location	0.00	0.00	3157061.92	1244292.69	40°00'09.382"N	104°56'21.649"W
Facility Reference Pt			3157061.92	1244292.69	40°00'09.382"N	104°56'21.649"W
Field Reference Pt			3197771.84	1268891.29	40°04'09.600"N	104°47'36.000"W

WELLPATH DATUM			
Calculation method	Minimum curvature	PRECISION 595 (25'KB) (RKB) to Facility Vertical Datum	5090.00ft
Horizontal Reference Pt	Slot	PRECISION 595 (25'KB) (RKB) to Mean Sea Level	5090.00ft
Vertical Reference Pt	PRECISION 595 (25'KB) (RKB)	PRECISION 595 (25'KB) (RKB) to Mud Line at Slot (SLOT#01 SACK STATE 30C-30HZ (825'FSL & 895'FWL, SEC.31))	5090.00ft
MD Reference Pt	PRECISION 595 (25'KB) (RKB)	Section Origin	N 0.00, E 0.00 ft
Field Vertical Reference	Mean Sea Level	Section Azimuth	356.73°

REFERENCE WELLPATH IDENTIFICATION			
Operator	KERR-MCGEE OIL & GAS ONSHORE LP	Slot	SLOT#01 SACK STATE 30C-30HZ (825'FSL & 895'FWL, SEC.31)
Area	COLORADO	Well	SACK STATE 30C-30HZ
Field	WELD COUNTY (KERR MCGEE)	Wellbore	SACK STATE 30C-30HZ AWP <125-17415>
Facility	SEC.31-T1N-R67W		

WELLPATH DATA (134 stations) † = interpolated/extrapolated station										
MD [ft]	Inclination [°]	Azimuth [°]	TVD [ft]	Vert Sect [ft]	North [ft]	East [ft]	Latitude	Longitude	DLS [°/100ft]	Comments
0.00†	0.000	288.130	0.00	0.00	0.00	0.00	40°00'09.382"N	104°56'21.649"W	0.00	
25.00	0.000	288.130	25.00	0.00	0.00	0.00	40°00'09.382"N	104°56'21.649"W	0.00	TIE ON
125.00	0.810	288.130	125.00	0.26	0.22	-0.67	40°00'09.384"N	104°56'21.658"W	0.81	BEGIN GYRO SURVEYS
225.00	0.510	334.390	224.99	0.93	0.84	-1.54	40°00'09.390"N	104°56'21.669"W	0.59	
325.00	1.120	333.780	324.98	2.24	2.12	-2.16	40°00'09.403"N	104°56'21.677"W	0.61	
425.00	1.040	303.500	424.96	3.68	3.50	-3.35	40°00'09.417"N	104°56'21.692"W	0.57	
525.00	0.690	314.540	524.95	4.67	4.42	-4.53	40°00'09.426"N	104°56'21.707"W	0.39	
625.00	0.960	339.810	624.94	5.92	5.63	-5.25	40°00'09.438"N	104°56'21.717"W	0.45	
725.00	0.950	317.670	724.93	7.36	7.03	-6.10	40°00'09.451"N	104°56'21.727"W	0.37	
825.00	0.610	291.540	824.92	8.23	7.84	-7.15	40°00'09.459"N	104°56'21.741"W	0.48	
925.00	0.720	351.280	924.91	9.08	8.65	-7.74	40°00'09.468"N	104°56'21.749"W	0.67	
1025.00	1.170	321.030	1024.90	10.54	10.07	-8.48	40°00'09.481"N	104°56'21.758"W	0.66	
1125.00	0.890	309.600	1124.88	11.89	11.36	-9.72	40°00'09.494"N	104°56'21.774"W	0.35	
1225.00	0.880	340.080	1224.87	13.16	12.57	-10.58	40°00'09.506"N	104°56'21.785"W	0.47	
1234.00	0.880	329.290	1233.87	13.28	12.70	-10.64	40°00'09.507"N	104°56'21.786"W	1.84	TIE ONTO GYRO SURVEYS
1314.00	1.570	337.390	1313.85	14.86	14.24	-11.38	40°00'09.523"N	104°56'21.795"W	0.89	BEGIN BHI MWD+IFR SURVEYS
1377.00	2.860	316.210	1376.81	16.87	16.17	-12.80	40°00'09.542"N	104°56'21.813"W	2.39	
1472.00	5.220	286.630	1471.57	20.15	19.12	-18.58	40°00'09.571"N	104°56'21.888"W	3.24	
1567.00	7.070	285.760	1566.02	23.53	21.94	-28.35	40°00'09.599"N	104°56'22.013"W	1.95	
1661.00	7.920	282.750	1659.22	27.20	24.94	-40.23	40°00'09.628"N	104°56'22.166"W	1.00	
1756.00	9.680	277.920	1753.10	30.56	27.49	-54.53	40°00'09.654"N	104°56'22.350"W	2.01	
1851.00	9.190	263.730	1846.82	31.71	27.76	-69.98	40°00'09.656"N	104°56'22.548"W	2.50	
1945.00	8.990	261.000	1939.64	30.59	25.79	-84.69	40°00'09.637"N	104°56'22.737"W	0.51	
2040.00	9.670	259.180	2033.39	28.80	23.13	-99.86	40°00'09.611"N	104°56'22.932"W	0.78	
2135.00	10.870	259.240	2126.86	26.58	19.96	-116.50	40°00'09.579"N	104°56'23.146"W	1.26	
2229.00	10.490	256.600	2219.24	23.92	16.32	-133.53	40°00'09.543"N	104°56'23.365"W	0.66	
2324.00	10.910	263.860	2312.59	21.95	13.36	-150.88	40°00'09.514"N	104°56'23.588"W	1.49	
2418.00	10.130	275.140	2405.02	22.72	13.15	-167.96	40°00'09.512"N	104°56'23.807"W	2.34	
2513.00	9.760	272.960	2498.59	24.82	14.31	-184.33	40°00'09.523"N	104°56'24.018"W	0.56	
2608.00	10.420	272.480	2592.12	26.55	15.10	-200.95	40°00'09.531"N	104°56'24.231"W	0.70	
2702.00	9.780	270.330	2684.66	27.91	15.51	-217.43	40°00'09.535"N	104°56'24.443"W	0.79	
2797.00	11.370	269.780	2778.05	28.91	15.52	-234.86	40°00'09.535"N	104°56'24.667"W	1.68	
2891.00	10.130	266.140	2870.40	29.32	14.93	-252.38	40°00'09.530"N	104°56'24.892"W	1.50	
2984.00	10.050	279.540	2961.97	31.04	15.73	-268.54	40°00'09.537"N	104°56'25.100"W	2.52	
3074.00	9.310	279.480	3050.69	34.39	18.23	-283.47	40°00'09.562"N	104°56'25.292"W	0.82	
3164.00	9.620	273.220	3139.47	36.84	19.85	-298.15	40°00'09.578"N	104°56'25.480"W	1.19	
3253.00	10.130	271.800	3227.15	38.38	20.51	-313.40	40°00'09.585"N	104°56'25.676"W	0.63	
3343.00	9.230	270.580	3315.86	39.56	20.83	-328.53	40°00'09.588"N	104°56'25.871"W	1.03	
3433.00	9.680	270.810	3404.64	40.59	21.01	-343.31	40°00'09.590"N	104°56'26.061"W	0.50	
3522.00	10.920	271.990	3492.21	41.89	21.41	-359.22	40°00'09.594"N	104°56'26.265"W	1.41	
3612.00	10.000	270.900	3580.71	43.24	21.83	-375.55	40°00'09.598"N	104°56'26.475"W	1.05	
3702.00	10.360	269.040	3669.29	44.14	21.82	-391.46	40°00'09.598"N	104°56'26.679"W	0.54	
3792.00	9.000	266.580	3758.01	44.45	21.26	-406.58	40°00'09.592"N	104°56'26.874"W	1.58	
3881.00	9.940	267.130	3845.80	44.48	20.46	-421.20	40°00'09.584"N	104°56'27.061"W	1.06	
3971.00	9.120	265.260	3934.55	44.36	19.48	-436.07	40°00'09.575"N	104°56'27.253"W	0.97	

REFERENCE WELLPATH IDENTIFICATION			
Operator	KERR-MCGEE OIL & GAS ONSHORE LP	Slot	SLOT#01 SACK STATE 30C-30HZ (825'FSL & 895'FWL, SEC.31)
Area	COLORADO	Well	SACK STATE 30C-30HZ
Field	WELD COUNTY (KERR MCGEE)	Wellbore	SACK STATE 30C-30HZ AWP <125-17415>
Facility	SEC.31-T1N-R67W		

WELLPATH DATA (134 stations) † = interpolated/extrapolated station										
MD [ft]	Inclination [°]	Azimuth [°]	TVD [ft]	Vert Sect [ft]	North [ft]	East [ft]	Latitude	Longitude	DLS [°/100ft]	Comments
4061.00	9.640	260.620	4023.35	43.37	17.67	-450.61	40°00'09.557"N	104°56'27.439"W	1.02	
4151.00	9.490	273.170	4112.11	43.40	16.85	-465.45	40°00'09.548"N	104°56'27.630"W	2.32	
4240.00	8.290	272.720	4200.04	44.90	17.56	-479.19	40°00'09.555"N	104°56'27.807"W	1.35	
4330.00	7.500	273.970	4289.19	46.32	18.27	-491.53	40°00'09.563"N	104°56'27.965"W	0.90	
4420.00	8.370	270.240	4378.32	47.46	18.71	-503.94	40°00'09.567"N	104°56'28.125"W	1.12	
4509.00	7.500	268.690	4466.47	48.05	18.60	-516.22	40°00'09.566"N	104°56'28.283"W	1.01	
4599.00	7.000	269.660	4555.75	48.54	18.44	-527.58	40°00'09.564"N	104°56'28.428"W	0.57	
4689.00	6.400	266.360	4645.14	48.78	18.08	-538.07	40°00'09.561"N	104°56'28.563"W	0.79	
4779.00	3.840	292.430	4734.78	50.06	18.92	-545.87	40°00'09.569"N	104°56'28.663"W	3.77	
4869.00	3.260	277.780	4824.61	51.86	20.41	-551.19	40°00'09.584"N	104°56'28.732"W	1.19	
4958.00	2.070	287.180	4913.51	52.90	21.23	-555.23	40°00'09.592"N	104°56'28.784"W	1.42	
5048.00	0.380	236.590	5003.49	53.32	21.55	-557.03	40°00'09.595"N	104°56'28.807"W	2.06	
5496.00	0.680	230.990	5451.47	51.02	19.05	-560.34	40°00'09.570"N	104°56'28.849"W	0.07	
5945.00	0.660	218.080	5900.44	47.53	15.34	-564.00	40°00'09.534"N	104°56'28.897"W	0.03	
6394.00	0.600	197.740	6349.41	43.39	11.07	-566.31	40°00'09.491"N	104°56'28.926"W	0.05	
6843.00	0.770	164.090	6798.38	38.25	5.93	-566.20	40°00'09.440"N	104°56'28.925"W	0.10	
7202.00	0.720	188.520	7157.35	33.69	1.38	-565.88	40°00'09.396"N	104°56'28.921"W	0.09	
7292.00	0.130	269.790	7247.35	33.14	0.82	-566.06	40°00'09.390"N	104°56'28.923"W	0.79	
7381.00	8.910	358.520	7335.99	40.05	7.72	-566.34	40°00'09.458"N	104°56'28.927"W	10.01	
7471.00	16.330	2.200	7423.76	59.64	27.36	-566.04	40°00'09.652"N	104°56'28.923"W	8.29	
7561.00	24.650	3.070	7507.99	90.94	58.80	-564.54	40°00'09.963"N	104°56'28.903"W	9.25	
7651.00	32.850	0.770	7586.83	134.02	102.02	-563.21	40°00'10.390"N	104°56'28.886"W	9.19	
7741.00	39.700	0.880	7659.34	187.10	155.23	-562.44	40°00'10.916"N	104°56'28.876"W	7.61	
7830.00	45.050	359.980	7725.07	246.94	215.19	-562.01	40°00'11.509"N	104°56'28.871"W	6.05	
7875.00	51.060	0.030	7755.13	280.34	248.65	-562.01	40°00'11.839"N	104°56'28.871"W	13.36	
7965.00	64.450	0.590	7803.04	356.14	324.59	-561.57	40°00'12.590"N	104°56'28.865"W	14.89	
8010.00	66.400	1.450	7821.76	396.94	365.51	-560.84	40°00'12.994"N	104°56'28.856"W	4.67	
8055.00	67.900	1.040	7839.23	438.28	406.97	-559.94	40°00'13.404"N	104°56'28.844"W	3.44	
8100.00	70.410	0.750	7855.24	480.22	449.01	-559.28	40°00'13.819"N	104°56'28.836"W	5.61	
8144.00	76.790	358.280	7867.66	522.35	491.19	-559.65	40°00'14.236"N	104°56'28.841"W	15.47	
8171.00	80.550	356.530	7872.97	548.82	517.64	-560.85	40°00'14.497"N	104°56'28.856"W	15.31	
8208.00	87.870	356.530	7876.70	585.61	554.35	-563.08	40°00'14.860"N	104°56'28.885"W	19.78	
8218.00†	88.362	356.534	7877.02	595.60	564.33	-563.69	40°00'14.959"N	104°56'28.893"W	4.92	7" CASING POINT
8257.00	90.280	356.550	7877.49	634.60	603.25	-566.04	40°00'15.343"N	104°56'28.923"W	4.92	
8437.00	90.870	357.100	7875.68	814.59	782.97	-576.01	40°00'17.119"N	104°56'29.051"W	0.45	
8616.00	89.970	358.340	7874.37	993.55	961.82	-583.13	40°00'18.887"N	104°56'29.143"W	0.86	
8706.00	90.300	359.490	7874.16	1083.48	1051.80	-584.83	40°00'19.776"N	104°56'29.164"W	1.33	
8885.00	88.360	0.350	7876.25	1262.18	1230.78	-585.08	40°00'21.545"N	104°56'29.168"W	1.19	
9065.00	89.720	0.370	7879.26	1441.79	1410.74	-583.95	40°00'23.323"N	104°56'29.153"W	0.76	
9154.00	88.700	1.040	7880.49	1530.56	1499.73	-582.86	40°00'24.203"N	104°56'29.139"W	1.37	
9334.00	90.030	1.420	7882.49	1709.99	1679.67	-578.99	40°00'25.981"N	104°56'29.090"W	0.77	
9514.00	89.880	1.590	7882.63	1889.37	1859.61	-574.26	40°00'27.759"N	104°56'29.029"W	0.13	
9693.00	90.090	2.080	7882.68	2067.66	2038.51	-568.53	40°00'29.527"N	104°56'28.955"W	0.30	
9872.00	90.250	0.110	7882.14	2246.13	2217.47	-565.11	40°00'31.296"N	104°56'28.911"W	1.10	
10052.00	89.750	0.000	7882.14	2425.82	2397.47	-564.94	40°00'33.074"N	104°56'28.909"W	0.28	

REFERENCE WELLPATH IDENTIFICATION			
Operator	KERR-MCGEE OIL & GAS ONSHORE LP	Slot	SLOT#01 SACK STATE 30C-30HZ (825'FSL & 895'FWL, SEC.31)
Area	COLORADO	Well	SACK STATE 30C-30HZ
Field	WELD COUNTY (KERR MCGEE)	Wellbore	SACK STATE 30C-30HZ AWP <125-17415>
Facility	SEC.31-T1N-R67W		

WELLPATH DATA (134 stations)										
MD [ft]	Inclination [°]	Azimuth [°]	TVD [ft]	Vert Sect [ft]	North [ft]	East [ft]	Latitude	Longitude	DLS [°/100ft]	Comments
10231.00	90.090	0.670	7882.39	2604.47	2576.47	-563.89	40°00'34.843"N	104°56'28.896"W	0.42	
10411.00	91.100	0.740	7880.52	2784.02	2756.44	-561.68	40°00'36.622"N	104°56'28.867"W	0.56	
10590.00	90.980	1.230	7877.28	2962.50	2935.38	-558.60	40°00'38.390"N	104°56'28.828"W	0.28	
10680.00	90.300	1.050	7876.27	3052.22	3025.36	-556.81	40°00'39.279"N	104°56'28.805"W	0.78	
10769.00	90.300	0.370	7875.80	3141.01	3114.35	-555.71	40°00'40.159"N	104°56'28.791"W	0.76	
10949.00	89.810	0.320	7875.63	3320.65	3294.35	-554.62	40°00'41.938"N	104°56'28.777"W	0.27	
11128.00	90.980	359.930	7874.40	3499.32	3473.34	-554.23	40°00'43.707"N	104°56'28.772"W	0.69	
11308.00	90.250	359.880	7872.47	3679.03	3653.33	-554.53	40°00'45.485"N	104°56'28.776"W	0.41	
11488.00	90.830	0.190	7870.77	3858.73	3833.32	-554.42	40°00'47.264"N	104°56'28.774"W	0.37	
11667.00	91.760	1.560	7866.72	4037.20	4012.25	-551.69	40°00'49.032"N	104°56'28.739"W	0.92	
11847.00	88.030	1.260	7867.05	4216.57	4192.16	-547.26	40°00'50.810"N	104°56'28.683"W	2.08	
12026.00	89.290	1.090	7871.24	4394.98	4371.07	-543.59	40°00'52.578"N	104°56'28.635"W	0.71	
12206.00	90.030	0.190	7872.31	4574.55	4551.05	-541.58	40°00'54.357"N	104°56'28.610"W	0.65	
12296.00	89.010	0.130	7873.06	4664.39	4641.05	-541.33	40°00'55.246"N	104°56'28.606"W	1.14	
12475.00	90.490	0.490	7873.84	4843.03	4820.04	-540.36	40°00'57.015"N	104°56'28.594"W	0.85	
12655.00	90.000	358.130	7873.07	5022.83	5000.01	-542.53	40°00'58.794"N	104°56'28.622"W	1.34	
12834.00	88.520	357.710	7875.38	5201.77	5178.87	-549.03	40°01'00.561"N	104°56'28.706"W	0.86	
13014.00	91.350	359.030	7875.59	5381.68	5358.78	-554.14	40°01'02.339"N	104°56'28.771"W	1.73	
13193.00	91.480	359.370	7871.17	5560.46	5537.70	-556.64	40°01'04.107"N	104°56'28.804"W	0.20	
13373.00	88.800	0.130	7870.73	5740.19	5717.68	-557.43	40°01'05.886"N	104°56'28.814"W	1.55	
13552.00	88.180	359.320	7875.45	5918.88	5896.62	-558.29	40°01'07.654"N	104°56'28.825"W	0.57	
13731.00	88.730	0.460	7880.27	6097.54	6075.55	-558.63	40°01'09.422"N	104°56'28.829"W	0.71	
13821.00	88.390	0.030	7882.53	6187.34	6165.52	-558.25	40°01'10.311"N	104°56'28.824"W	0.61	
14000.00	89.440	0.450	7885.92	6365.97	6344.48	-557.50	40°01'12.080"N	104°56'28.815"W	0.63	
14180.00	87.970	359.340	7889.99	6545.64	6524.43	-557.83	40°01'13.858"N	104°56'28.819"W	1.02	
14359.00	88.820	0.200	7895.00	6724.31	6703.35	-558.54	40°01'15.627"N	104°56'28.828"W	0.68	
14539.00	88.860	359.980	7898.65	6903.96	6883.32	-558.26	40°01'17.405"N	104°56'28.825"W	0.12	
14718.00	89.290	359.340	7901.54	7082.70	7062.29	-559.32	40°01'19.174"N	104°56'28.838"W	0.43	
14898.00	90.430	0.010	7901.98	7262.46	7242.28	-560.34	40°01'20.952"N	104°56'28.852"W	0.73	
15077.00	90.520	0.820	7900.49	7441.08	7421.27	-559.05	40°01'22.721"N	104°56'28.835"W	0.46	
15256.00	90.240	1.100	7899.31	7619.59	7600.24	-556.05	40°01'24.490"N	104°56'28.796"W	0.22	
15346.00	90.550	1.090	7898.69	7709.33	7690.22	-554.33	40°01'25.379"N	104°56'28.774"W	0.34	
15525.00	89.780	0.220	7898.17	7887.90	7869.20	-552.28	40°01'27.148"N	104°56'28.748"W	0.65	
15704.00	88.860	0.200	7900.30	8066.56	8048.19	-551.63	40°01'28.917"N	104°56'28.740"W	0.51	
15883.00	89.720	0.740	7902.51	8245.16	8227.17	-550.16	40°01'30.685"N	104°56'28.721"W	0.57	
16062.00	90.490	0.690	7902.19	8423.72	8406.15	-547.92	40°01'32.454"N	104°56'28.692"W	0.43	
16240.00	90.460	0.840	7900.71	8601.27	8584.13	-545.55	40°01'34.213"N	104°56'28.662"W	0.09	
16419.00	91.350	0.750	7897.88	8779.80	8763.09	-543.06	40°01'35.981"N	104°56'28.630"W	0.50	
16599.00	90.120	359.660	7895.57	8959.45	8943.07	-542.42	40°01'37.760"N	104°56'28.622"W	0.91	
16778.00	90.360	359.570	7894.82	9138.22	9122.06	-543.62	40°01'39.529"N	104°56'28.637"W	0.14	
16958.00	91.600	0.050	7891.75	9317.93	9302.03	-544.22	40°01'41.307"N	104°56'28.645"W	0.74	
17137.00	89.570	357.870	7889.92	9496.76	9480.97	-547.47	40°01'43.076"N	104°56'28.687"W	1.66	
17361.00	92.680	357.720	7885.52	9720.65	9704.73	-556.09	40°01'45.287"N	104°56'28.798"W	1.39	LAST BHI MWD+IFR SURVEY
17415.00	92.680	357.720	7883.00	9774.58	9758.63	-558.23	40°01'45.820"N	104°56'28.825"W	0.00	PROJECTION TO BIT

REFERENCE WELLPATH IDENTIFICATION			
Operator	KERR-MCGEE OIL & GAS ONSHORE LP	Slot	SLOT#01 SACK STATE 30C-30HZ (825'FSL & 895'FWL, SEC.31)
Area	COLORADO	Well	SACK STATE 30C-30HZ
Field	WELD COUNTY (KERR MCGEE)	Wellbore	SACK STATE 30C-30HZ AWB <125-17415>
Facility	SEC.31-T1N-R67W		

HOLE & CASING SECTIONS - Ref Wellbore: SACK STATE 30C-30HZ AWB <125-17415> Ref Wellpath: SACK STATE 30C-30HZ AWP									
String/Diameter	Start MD [ft]	End MD [ft]	Interval [ft]	Start TVD [ft]	End TVD [ft]	Start N/S [ft]	Start E/W [ft]	End N/S [ft]	End E/W [ft]
13.5in Open Hole	25.00	1283.00	1258.00	25.00	1282.86	0.00	0.00	13.53	-11.07
9.625in Casing Surface	25.00	1283.00	1258.00	25.00	1282.86	0.00	0.00	13.53	-11.07
8.75in Open Hole	1283.00	8228.00	6945.00	1282.86	7877.27	13.53	-11.07	574.31	-564.29
7in Casing Intermediate	25.00	8218.00	8193.00	25.00	7877.02	0.00	0.00	564.33	-563.69
6.125in Open Hole	8228.00	17415.00	9187.00	7877.27	7883.00	574.31	-564.29	9758.63	-558.23

WELLPATH COMPOSITION - Ref Wellbore: SACK STATE 30C-30HZ AWB <125-17415> Ref Wellpath: SACK STATE 30C-30HZ AWP					
Start MD [ft]	End MD [ft]	Positional Uncertainty Model	Log Name/Comment	Wellbore	
25.00	1234.00	Generic gyro - continuous (Standard)	MS GYRO SURVEYS <125-1234>	SACK STATE 30C-30HZ AWB <125-17415>	
1234.00	8171.00	NaviTrak (MAGCORR,IFR)	BHI NAVITRAK MWD+IFR 8 3/4" <1314-8171>	SACK STATE 30C-30HZ AWB <125-17415>	
8171.00	17361.00	NaviTrak (MAGCORR,IFR)	BHI NAVITRAK MWD+IFR 6 1/8" <8208-17361>	SACK STATE 30C-30HZ AWB <125-17415>	
17361.00	17415.00	Blind Drilling (std)	Projection to bit	SACK STATE 30C-30HZ AWB <125-17415>	



# Actual Wellpath Report

## SACK STATE 30C-30HZ AWP

Page 6 of 6



REFERENCE WELLPATH IDENTIFICATION			
Operator	KERR-MCGEE OIL & GAS ONSHORE LP	Slot	SLOT#01 SACK STATE 30C-30HZ (825'FSL & 895'FWL, SEC.31)
Area	COLORADO	Well	SACK STATE 30C-30HZ
Field	WELD COUNTY (KERR MCGEE)	Wellbore	SACK STATE 30C-30HZ AWB <125-17415>
Facility	SEC.31-T1N-R67W		

WELLPATH COMMENTS				
MD [ft]	Inclination [°]	Azimuth [°]	TVD [ft]	Comment
25.00	0.000	288.130	25.00	TIE ON
125.00	0.810	288.130	125.00	BEGIN GYRO SURVEYS
1234.00	0.880	329.290	1233.87	TIE ONTO GYRO SURVEYS
1314.00	1.570	337.390	1313.85	BEGIN BHI MWD+IFR SURVEYS
8218.00	88.362	356.534	7877.02	7" CASING POINT
17361.00	92.680	357.720	7885.52	LAST BHI MWD+IFR SURVEY
17415.00	92.680	357.720	7883.00	PROJECTION TO BIT