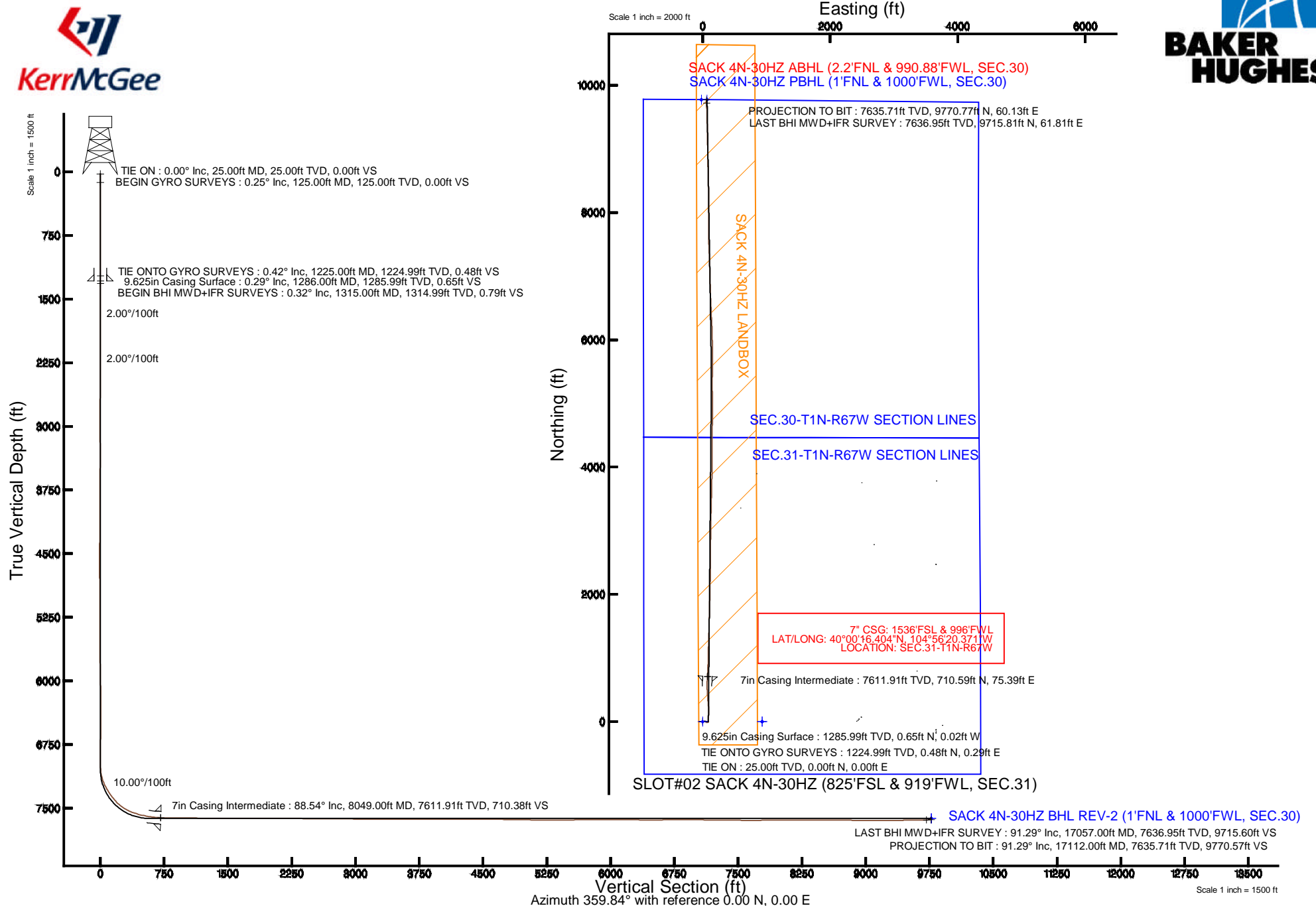


KERR-MCGEE OIL & GAS ONSHORE LP

Location: COLORADO Slot: SLOT#02 SACK 4N-30HZ (825'FSL & 919'FWL, SEC.31)
 Field: WELD COUNTY (KERR MCGEE) Well: SACK 4N-30HZ
 Facility: SEC.31-T1N-R67W Wellbore: SACK 4N-30HZ PWB

Plot reference wellpath is SACK 4N-30HZ (REV-A.0) PWP

True vertical depths are referenced to PRECISION 595 (25'KB) (RKB)	Grid System: NAD83 / Lambert Colorado SP, Northern Zone (501), US feet
Measured depths are referenced to PRECISION 595 (25'KB) (RKB)	North Reference: True north
PRECISION 595 (25'KB) (RKB) to Mean Sea Level: 5090 feet	Scale: True distance
Mean Sea Level to Mud line (At Slot: SLOT#02 SACK 4N-30HZ (825'FSL & 919'FWL, SEC.31)): 0 feet	Depths are in feet
Coordinates are in feet referenced to Slot	Created by: robiale01 on 11/4/2014



Actual Wellpath Report

SACK 4N-30HZ AWP

Page 1 of 6

REFERENCE WELLPATH IDENTIFICATION

Operator	KERR-MCGEE OIL & GAS ONSHORE LP	Slot	SLOT#02 SACK 4N-30HZ (825'FSL & 919'FWL, SEC.31)
Area	COLORADO	Well	SACK 4N-30HZ
Field	WELD COUNTY (KERR MCGEE)	Wellbore	SACK 4N-30HZ AWB <125-17112>
Facility	SEC.31-T1N-R67W		

REPORT SETUP INFORMATION

Projection System	NAD83 / Lambert Colorado SP, Northern Zone (501), US feet	Software System	WellArchitect® 4.0.0
North Reference	True	User	Robiale01
Scale	0.999966	Report Generated	11/4/2014 at 3:16:55 PM
Convergence at slot	n/a	Database/Source file	WellArchitectDB/SACK_4N-30HZ_AWB__125-17112_.xml

WELLPATH LOCATION

	Local coordinates		Grid coordinates		Geographic coordinates	
	North[ft]	East[ft]	Easting[US ft]	Northing[US ft]	Latitude	Longitude
Slot Location	0.00	24.05	3157085.96	1244292.84	40°00'09.382"N	104°56'21.340"W
Facility Reference Pt			3157061.92	1244292.69	40°00'09.382"N	104°56'21.649"W
Field Reference Pt			3197771.84	1268891.29	40°04'09.600"N	104°47'36.000"W

WELLPATH DATUM

Calculation method	Minimum curvature	PRECISION 595 (25'KB) (RKB) to Facility Vertical Datum	5090.00ft
Horizontal Reference Pt	Slot	PRECISION 595 (25'KB) (RKB) to Mean Sea Level	5090.00ft
Vertical Reference Pt	PRECISION 595 (25'KB) (RKB)	PRECISION 595 (25'KB) (RKB) to Mud Line at Slot (SLOT#02 SACK 4N-30HZ (825'FSL & 919'FWL, SEC.31))	5090.00ft
MD Reference Pt	PRECISION 595 (25'KB) (RKB)	Section Origin	N 0.00, E 0.00 ft
Field Vertical Reference	Mean Sea Level	Section Azimuth	0.35°

Actual Wellpath Report

SACK 4N-30HZ AWP

Page 2 of 6

REFERENCE WELLPATH IDENTIFICATION			
Operator	KERR-MCGEE OIL & GAS ONSHORE LP	Slot	SLOT#02 SACK 4N-30HZ (825'FSL & 919'FWL, SEC.31)
Area	COLORADO	Well	SACK 4N-30HZ
Field	WELD COUNTY (KERR MCGEE)	Wellbore	SACK 4N-30HZ AWB <125-17112>
Facility	SEC.31-T1N-R67W		

WELLPATH DATA (126 stations) † = interpolated/extrapolated station										
MD [ft]	Inclination [°]	Azimuth [°]	TVD [ft]	Vert Sect [ft]	North [ft]	East [ft]	Latitude	Longitude	DLS [°/100ft]	Comments
0.00†	0.000	89.080	0.00	0.00	0.00	0.00	40°00'09.382"N	104°56'21.340"W	0.00	
25.00	0.000	89.080	25.00	0.00	0.00	0.00	40°00'09.382"N	104°56'21.340"W	0.00	TIE ON
125.00	0.250	89.080	125.00	0.00	0.00	0.22	40°00'09.382"N	104°56'21.337"W	0.25	BEGIN GYRO SURVEYS
225.00	0.270	205.930	225.00	-0.20	-0.20	0.33	40°00'09.380"N	104°56'21.336"W	0.44	
325.00	0.500	133.030	325.00	-0.71	-0.71	0.55	40°00'09.375"N	104°56'21.333"W	0.49	
425.00	0.370	57.560	425.00	-0.83	-0.84	1.14	40°00'09.374"N	104°56'21.325"W	0.54	
525.00	0.190	258.480	524.99	-0.69	-0.70	1.25	40°00'09.375"N	104°56'21.324"W	0.55	
625.00	0.210	129.350	624.99	-0.84	-0.85	1.23	40°00'09.374"N	104°56'21.324"W	0.36	
725.00	0.450	346.280	724.99	-0.58	-0.58	1.28	40°00'09.376"N	104°56'21.324"W	0.63	
825.00	0.320	212.400	824.99	-0.43	-0.44	1.04	40°00'09.378"N	104°56'21.327"W	0.71	
925.00	0.500	356.510	924.99	-0.23	-0.24	0.86	40°00'09.380"N	104°56'21.329"W	0.78	
1025.00	0.320	262.300	1024.99	0.16	0.16	0.56	40°00'09.384"N	104°56'21.333"W	0.61	
1125.00	0.270	51.610	1124.99	0.27	0.27	0.46	40°00'09.385"N	104°56'21.334"W	0.57	
1225.00	0.420	280.030	1224.99	0.48	0.48	0.29	40°00'09.387"N	104°56'21.336"W	0.63	TIE ONTO GYRO SURVEYS
1315.00	0.320	353.040	1314.99	0.79	0.79	-0.07	40°00'09.390"N	104°56'21.341"W	0.50	BEGIN BHI MWD+IFR SURVEYS
1378.00	0.830	62.770	1377.98	1.17	1.17	0.32	40°00'09.394"N	104°56'21.336"W	1.24	
1473.00	3.450	96.010	1472.91	1.21	1.19	3.77	40°00'09.394"N	104°56'21.292"W	2.94	
1567.00	5.840	95.940	1566.60	0.46	0.39	11.34	40°00'09.386"N	104°56'21.194"W	2.54	
1662.00	5.620	93.750	1661.12	-0.28	-0.41	20.79	40°00'09.378"N	104°56'21.073"W	0.33	
1757.00	5.310	87.400	1755.69	-0.33	-0.51	29.82	40°00'09.377"N	104°56'20.957"W	0.71	
1851.00	4.980	83.240	1849.31	0.40	0.16	38.22	40°00'09.384"N	104°56'20.849"W	0.53	
1946.00	4.620	79.890	1943.98	1.60	1.32	46.08	40°00'09.395"N	104°56'20.748"W	0.48	
2041.00	4.580	97.210	2038.68	1.85	1.52	53.61	40°00'09.397"N	104°56'20.651"W	1.46	
2135.00	4.170	99.730	2132.40	0.84	0.47	60.70	40°00'09.387"N	104°56'20.560"W	0.48	
2230.00	4.070	97.560	2227.16	-0.15	-0.56	67.45	40°00'09.376"N	104°56'20.473"W	0.19	
2324.00	3.240	94.790	2320.97	-0.77	-1.22	73.41	40°00'09.370"N	104°56'20.397"W	0.90	
2419.00	2.780	93.000	2415.83	-1.08	-1.57	78.38	40°00'09.367"N	104°56'20.333"W	0.49	
2514.00	2.570	85.750	2510.73	-1.02	-1.53	82.81	40°00'09.367"N	104°56'20.276"W	0.42	
2608.00	2.340	104.870	2604.65	-1.33	-1.87	86.76	40°00'09.364"N	104°56'20.225"W	0.90	
2703.00	0.370	131.900	2699.62	-2.02	-2.57	88.87	40°00'09.357"N	104°56'20.198"W	2.12	
3074.00	0.270	40.180	3070.61	-2.14	-2.70	90.32	40°00'09.355"N	104°56'20.179"W	0.13	
3523.00	1.150	263.080	3519.59	-1.90	-2.43	86.53	40°00'09.358"N	104°56'20.228"W	0.30	
3613.00	0.620	237.370	3609.57	-2.28	-2.81	85.22	40°00'09.354"N	104°56'20.245"W	0.72	
4061.00	2.090	252.870	4057.44	-6.06	-6.52	75.38	40°00'09.318"N	104°56'20.371"W	0.34	
4151.00	0.840	288.770	4147.41	-6.34	-6.79	73.18	40°00'09.315"N	104°56'20.400"W	1.66	
4241.00	0.650	98.310	4237.41	-6.20	-6.65	73.06	40°00'09.316"N	104°56'20.401"W	1.65	
4510.00	1.680	238.020	4506.37	-8.52	-8.96	71.23	40°00'09.293"N	104°56'20.425"W	0.82	
4600.00	0.240	329.560	4596.36	-9.07	-9.50	70.01	40°00'09.288"N	104°56'20.440"W	1.89	
4690.00	1.920	67.140	4686.34	-8.31	-8.75	71.31	40°00'09.296"N	104°56'20.424"W	2.18	
5049.00	0.810	55.110	5045.24	-4.48	-4.96	78.93	40°00'09.333"N	104°56'20.326"W	0.32	
5497.00	0.910	204.980	5493.22	-5.88	-6.37	80.03	40°00'09.319"N	104°56'20.312"W	0.37	
5587.00	0.860	286.880	5583.21	-6.34	-6.83	79.08	40°00'09.315"N	104°56'20.324"W	1.29	
5677.00	1.650	344.650	5673.19	-4.90	-5.38	78.09	40°00'09.329"N	104°56'20.337"W	1.55	
5766.00	1.720	28.530	5762.15	-2.49	-2.97	78.39	40°00'09.353"N	104°56'20.333"W	1.42	
6035.00	1.030	42.540	6031.08	2.86	2.36	81.95	40°00'09.405"N	104°56'20.287"W	0.28	

Actual Wellpath Report

SACK 4N-30HZ AWP

Page 3 of 6

REFERENCE WELLPATH IDENTIFICATION

Operator	KERR-MCGEE OIL & GAS ONSHORE LP	Slot	SLOT#02 SACK 4N-30HZ (825'FSL & 919'FWL, SEC.31)
Area	COLORADO	Well	SACK 4N-30HZ
Field	WELD COUNTY (KERR MCGEE)	Wellbore	SACK 4N-30HZ AWB <125-17112>
Facility	SEC.31-T1N-R67W		

WELLPATH DATA (126 stations) † = interpolated/extrapolated station

MD [ft]	Inclination [°]	Azimuth [°]	TVD [ft]	Vert Sect [ft]	North [ft]	East [ft]	Latitude	Longitude	DLS [°/100ft]	Comments
6304.00	0.300	60.800	6300.06	5.00	4.48	84.20	40°00'09.426"N	104°56'20.258"W	0.28	
6574.00	0.480	224.810	6570.05	4.54	4.02	84.02	40°00'09.422"N	104°56'20.260"W	0.29	
6664.00	1.140	139.870	6660.05	3.59	3.07	84.33	40°00'09.412"N	104°56'20.256"W	1.33	
6933.00	0.710	130.210	6929.01	0.49	-0.05	87.33	40°00'09.382"N	104°56'20.218"W	0.17	
7023.00	2.240	10.130	7018.99	1.86	1.32	88.06	40°00'09.395"N	104°56'20.208"W	2.96	
7113.00	12.180	2.200	7108.17	13.12	12.57	88.74	40°00'09.506"N	104°56'20.200"W	11.07	
7203.00	21.470	0.880	7194.22	39.13	38.58	89.36	40°00'09.763"N	104°56'20.192"W	10.33	
7292.00	30.270	2.020	7274.22	77.92	77.36	90.40	40°00'10.147"N	104°56'20.178"W	9.90	
7382.00	35.860	1.710	7349.62	126.98	126.42	91.99	40°00'10.631"N	104°56'20.158"W	6.21	
7472.00	42.600	0.200	7419.30	183.86	183.30	92.88	40°00'11.193"N	104°56'20.146"W	7.56	
7562.00	53.070	355.500	7479.64	250.37	249.82	90.16	40°00'11.851"N	104°56'20.181"W	12.25	
7651.00	63.910	355.050	7526.09	325.84	325.33	83.90	40°00'12.597"N	104°56'20.262"W	12.19	
7696.00	68.770	355.920	7544.14	366.89	366.40	80.66	40°00'13.003"N	104°56'20.303"W	10.94	
7741.00	71.750	355.790	7559.34	409.11	408.64	77.60	40°00'13.420"N	104°56'20.343"W	6.63	
7786.00	75.240	355.720	7572.12	452.11	451.66	74.41	40°00'13.845"N	104°56'20.384"W	7.76	
7831.00	76.660	355.920	7583.05	495.63	495.20	71.22	40°00'14.276"N	104°56'20.425"W	3.18	
7876.00	78.190	357.950	7592.85	539.47	539.05	68.88	40°00'14.709"N	104°56'20.455"W	5.56	
7921.00	81.470	1.940	7600.79	583.74	583.33	68.84	40°00'15.147"N	104°56'20.455"W	11.37	
7965.00	83.800	3.000	7606.43	627.35	626.92	70.73	40°00'15.577"N	104°56'20.431"W	5.81	
8010.00	86.520	3.260	7610.23	672.13	671.69	73.17	40°00'16.020"N	104°56'20.400"W	6.07	
8049.00†	88.543	3.260	7611.91	711.04	710.59	75.39	40°00'16.404"N	104°56'20.371"W	5.19	7" CASING POINT
8058.00	89.010	3.260	7612.10	720.03	719.57	75.90	40°00'16.493"N	104°56'20.365"W	5.19	
8168.00	89.290	2.460	7613.73	829.91	829.42	81.39	40°00'17.579"N	104°56'20.294"W	0.77	
8258.00	89.290	1.630	7614.85	919.86	919.36	84.60	40°00'18.467"N	104°56'20.253"W	0.92	
8438.00	89.690	1.060	7616.45	1099.83	1099.30	88.83	40°00'20.246"N	104°56'20.199"W	0.39	
8617.00	89.930	1.870	7617.04	1278.79	1278.24	93.40	40°00'22.014"N	104°56'20.140"W	0.47	
8797.00	89.960	1.870	7617.22	1458.73	1458.14	99.28	40°00'23.792"N	104°56'20.064"W	0.02	
8976.00	89.960	1.080	7617.34	1637.69	1637.08	103.88	40°00'25.560"N	104°56'20.005"W	0.44	
9066.00	89.720	1.700	7617.59	1727.68	1727.06	106.07	40°00'26.449"N	104°56'19.977"W	0.74	
9245.00	89.350	1.410	7619.05	1906.63	1905.98	110.92	40°00'28.218"N	104°56'19.915"W	0.26	
9335.00	89.690	1.240	7619.80	1996.61	1995.96	113.00	40°00'29.107"N	104°56'19.888"W	0.42	
9425.00	89.810	1.250	7620.19	2086.60	2085.93	114.96	40°00'29.996"N	104°56'19.863"W	0.13	
9515.00	89.660	1.150	7620.61	2176.59	2175.91	116.84	40°00'30.885"N	104°56'19.838"W	0.20	
9604.00	89.750	0.840	7621.07	2265.58	2264.90	118.39	40°00'31.764"N	104°56'19.819"W	0.36	
9783.00	89.630	0.870	7622.04	2444.58	2443.88	121.06	40°00'33.533"N	104°56'19.784"W	0.07	
9963.00	90.030	0.370	7622.57	2624.57	2623.86	123.01	40°00'35.312"N	104°56'19.759"W	0.36	
10142.00	89.100	0.140	7623.93	2803.56	2802.86	123.81	40°00'37.081"N	104°56'19.749"W	0.54	
10322.00	89.100	0.800	7626.76	2983.54	2982.83	125.28	40°00'38.859"N	104°56'19.730"W	0.37	
10501.00	89.380	1.110	7629.13	3162.51	3161.79	128.26	40°00'40.628"N	104°56'19.692"W	0.23	
10681.00	90.240	1.570	7629.73	3342.48	3341.73	132.47	40°00'42.406"N	104°56'19.637"W	0.54	
10860.00	90.300	1.570	7628.88	3521.44	3520.66	137.38	40°00'44.174"N	104°56'19.574"W	0.03	
10950.00	89.350	0.850	7629.16	3611.43	3610.64	139.28	40°00'45.063"N	104°56'19.550"W	1.32	
11129.00	89.660	1.700	7630.71	3790.40	3789.59	143.26	40°00'46.832"N	104°56'19.499"W	0.51	
11309.00	90.340	1.130	7630.71	3970.37	3969.53	147.71	40°00'48.610"N	104°56'19.442"W	0.49	
11399.00	90.060	0.430	7630.39	4060.36	4059.52	148.93	40°00'49.499"N	104°56'19.426"W	0.84	

Actual Wellpath Report

SACK 4N-30HZ AWP

Page 4 of 6

REFERENCE WELLPATH IDENTIFICATION

Operator	KERR-MCGEE OIL & GAS ONSHORE LP	Slot	SLOT#02 SACK 4N-30HZ (825'FSL & 919'FWL, SEC.31)
Area	COLORADO	Well	SACK 4N-30HZ
Field	WELD COUNTY (KERR MCGEE)	Wellbore	SACK 4N-30HZ AWB <125-17112>
Facility	SEC.31-T1N-R67W		

WELLPATH DATA (126 stations)

MD [ft]	Inclination [°]	Azimuth [°]	TVD [ft]	Vert Sect [ft]	North [ft]	East [ft]	Latitude	Longitude	DLS [°/100ft]	Comments
11578.00	89.600	0.180	7630.92	4239.36	4238.52	149.88	40°00'51.268"N	104°56'19.414"W	0.29	
11758.00	90.280	359.930	7631.11	4419.36	4418.52	150.06	40°00'53.047"N	104°56'19.411"W	0.40	
11848.00	90.030	0.210	7630.87	4509.36	4508.52	150.17	40°00'53.937"N	104°56'19.410"W	0.42	
12027.00	89.780	0.150	7631.16	4688.35	4687.52	150.73	40°00'55.705"N	104°56'19.403"W	0.14	
12117.00	88.980	0.600	7632.14	4778.35	4777.51	151.32	40°00'56.595"N	104°56'19.395"W	1.02	
12207.00	89.320	0.150	7633.47	4868.34	4867.49	151.91	40°00'57.484"N	104°56'19.388"W	0.63	
12387.00	88.730	359.730	7636.54	5048.31	5047.47	151.72	40°00'59.263"N	104°56'19.390"W	0.40	
12566.00	89.590	359.360	7639.16	5227.27	5226.44	150.30	40°01'01.031"N	104°56'19.408"W	0.52	
12745.00	90.950	0.730	7638.32	5406.25	5405.43	150.44	40°01'02.800"N	104°56'19.406"W	1.08	
12925.00	90.150	0.860	7636.59	5586.24	5585.40	152.94	40°01'04.579"N	104°56'19.374"W	0.45	
13105.00	90.330	0.000	7635.83	5766.23	5765.39	154.29	40°01'06.357"N	104°56'19.357"W	0.49	
13284.00	90.800	358.410	7634.07	5945.18	5944.36	151.80	40°01'08.126"N	104°56'19.389"W	0.93	
13374.00	89.840	358.880	7633.57	6035.14	6034.33	149.67	40°01'09.015"N	104°56'19.416"W	1.19	
13553.00	89.110	357.470	7635.21	6214.00	6213.23	143.97	40°01'10.783"N	104°56'19.489"W	0.89	
13732.00	89.690	357.350	7637.08	6392.75	6392.04	135.89	40°01'12.550"N	104°56'19.593"W	0.33	
13912.00	90.430	357.420	7636.89	6572.51	6571.85	127.67	40°01'14.327"N	104°56'19.699"W	0.41	
14091.00	89.910	358.390	7636.36	6751.34	6750.72	121.13	40°01'16.095"N	104°56'19.783"W	0.61	
14181.00	89.970	358.220	7636.46	6841.28	6840.69	118.47	40°01'16.984"N	104°56'19.817"W	0.20	
14360.00	90.150	358.450	7636.27	7020.17	7019.61	113.27	40°01'18.752"N	104°56'19.884"W	0.16	
14450.00	88.890	358.750	7637.02	7110.13	7109.58	111.07	40°01'19.641"N	104°56'19.912"W	1.44	
14630.00	89.720	358.180	7639.21	7290.01	7289.50	106.25	40°01'21.419"N	104°56'19.974"W	0.56	
14809.00	89.220	357.150	7640.86	7468.81	7468.34	98.96	40°01'23.186"N	104°56'20.068"W	0.64	
14988.00	90.000	359.650	7642.08	7647.68	7647.25	93.96	40°01'24.954"N	104°56'20.132"W	1.46	
15167.00	90.490	359.870	7641.32	7826.67	7826.24	93.21	40°01'26.723"N	104°56'20.142"W	0.30	
15347.00	90.830	359.850	7639.24	8006.65	8006.23	92.77	40°01'28.502"N	104°56'20.148"W	0.19	
15526.00	89.040	359.890	7639.44	8185.64	8185.22	92.36	40°01'30.271"N	104°56'20.153"W	1.00	
15705.00	90.000	359.320	7640.94	8364.61	8364.21	91.13	40°01'32.040"N	104°56'20.169"W	0.62	
15884.00	89.750	358.980	7641.33	8543.57	8543.19	88.47	40°01'33.808"N	104°56'20.203"W	0.24	
16063.00	90.220	358.220	7641.38	8722.49	8722.14	84.10	40°01'35.577"N	104°56'20.259"W	0.50	
16241.00	89.170	359.050	7642.33	8900.40	8900.08	79.86	40°01'37.335"N	104°56'20.313"W	0.75	
16420.00	89.850	359.040	7643.86	9079.35	9079.05	76.88	40°01'39.104"N	104°56'20.352"W	0.38	
16600.00	90.400	358.900	7643.47	9259.29	9259.02	73.64	40°01'40.882"N	104°56'20.393"W	0.32	
16779.00	90.770	358.550	7641.64	9438.21	9437.96	69.66	40°01'42.651"N	104°56'20.445"W	0.28	
16959.00	90.980	358.320	7638.89	9618.09	9617.87	64.74	40°01'44.429"N	104°56'20.508"W	0.17	
17057.00	91.290	358.250	7636.95	9716.01	9715.81	61.81	40°01'45.397"N	104°56'20.545"W	0.32	LAST BHI MWD+IFR SURVEY
17112.00	91.290	358.250	7635.71	9770.95	9770.77	60.13	40°01'45.940"N	104°56'20.567"W	0.00	PROJECTION TO BIT

Actual Wellpath Report

SACK 4N-30HZ AWP

Page 5 of 6

REFERENCE WELLPATH IDENTIFICATION			
Operator	KERR-MCGEE OIL & GAS ONSHORE LP	Slot	SLOT#02 SACK 4N-30HZ (825'FSL & 919'FWL, SEC.31)
Area	COLORADO	Well	SACK 4N-30HZ
Field	WELD COUNTY (KERR MCGEE)	Wellbore	SACK 4N-30HZ AWB <125-17112>
Facility	SEC.31-T1N-R67W		

HOLE & CASING SECTIONS - Ref Wellbore: SACK 4N-30HZ AWB <125-17112>						Ref Wellpath: SACK 4N-30HZ AWP			
String/Diameter	Start MD [ft]	End MD [ft]	Interval [ft]	Start TVD [ft]	End TVD [ft]	Start N/S [ft]	Start E/W [ft]	End N/S [ft]	End E/W [ft]
13.5in Open Hole	25.00	1297.00	1272.00	25.00	1296.99	0.00	0.00	0.69	-0.04
9.625in Casing Surface	25.00	1286.00	1261.00	25.00	1285.99	0.00	0.00	0.65	-0.02
8.75in Open Hole	1297.00	8058.00	6761.00	1296.99	7612.10	0.69	-0.04	719.57	75.90
7in Casing Intermediate	25.00	8049.00	8024.00	25.00	7611.91	0.00	0.00	710.59	75.39
6.125in Open Hole	8058.00	17112.00	9054.00	7612.10	7635.71	719.57	75.90	9770.77	60.13

WELLPATH COMPOSITION - Ref Wellbore: SACK 4N-30HZ AWB <125-17112>				Ref Wellpath: SACK 4N-30HZ AWP	
Start MD [ft]	End MD [ft]	Positional Uncertainty Model	Log Name/Comment	Wellbore	
25.00	1225.00	Generic gyro - continuous (Standard)	MS GYRO SURVEYS <125-1225>	SACK 4N-30HZ AWB <125-17112>	
1225.00	8010.00	NaviTrak (MAGCORR,IFR)	BHI NAVITRAK MWD+IFR 8 3/4" <1315-8010>	SACK 4N-30HZ AWB <125-17112>	
8010.00	17057.00	NaviTrak (MAGCORR,IFR)	BHI NAVITRAK MWD+IFR 6 1/8" <8058-17057>	SACK 4N-30HZ AWB <125-17112>	
17057.00	17112.00	Blind Drilling (std)	Projection to bit	SACK 4N-30HZ AWB <125-17112>	

REFERENCE WELLPATH IDENTIFICATION			
Operator	KERR-MCGEE OIL & GAS ONSHORE LP	Slot	SLOT#02 SACK 4N-30HZ (825'FSL & 919'FWL, SEC.31)
Area	COLORADO	Well	SACK 4N-30HZ
Field	WELD COUNTY (KERR MCGEE)	Wellbore	SACK 4N-30HZ AWB <125-17112>
Facility	SEC.31-T1N-R67W		

WELLPATH COMMENTS				
MD [ft]	Inclination [°]	Azimuth [°]	TVD [ft]	Comment
25.00	0.000	89.080	25.00	TIE ON
125.00	0.250	89.080	125.00	BEGIN GYRO SURVEYS
1225.00	0.420	280.030	1224.99	TIE ONTO GYRO SURVEYS
1315.00	0.320	353.040	1314.99	BEGIN BHI MWD+IFR SURVEYS
8049.00	88.543	3.260	7611.91	7" CASING POINT
17057.00	91.290	358.250	7636.95	LAST BHI MWD+IFR SURVEY
17112.00	91.290	358.250	7635.71	PROJECTION TO BIT