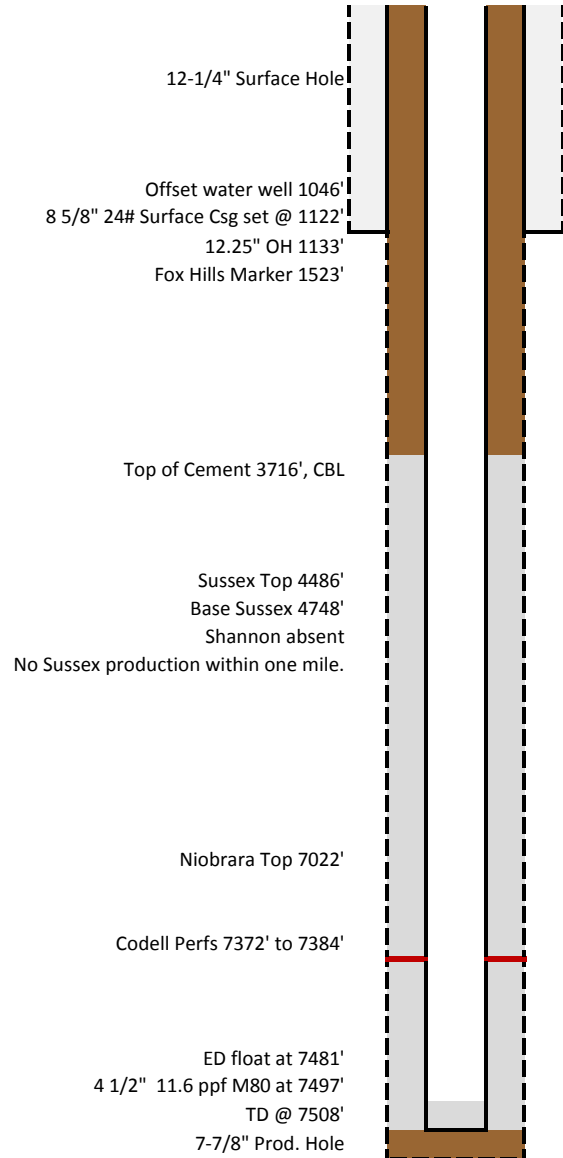


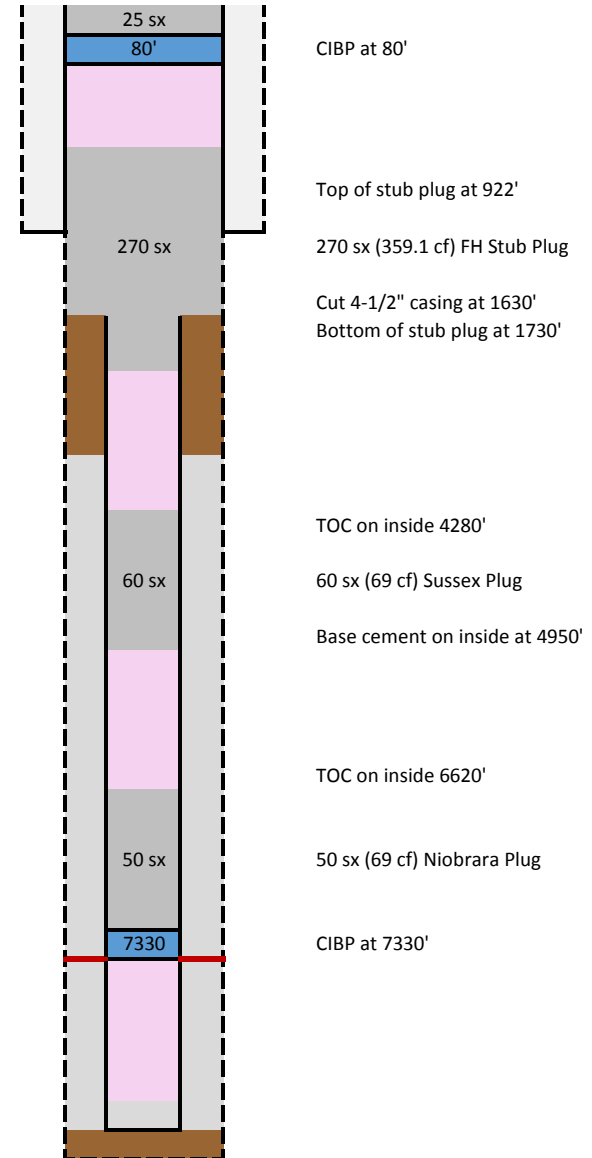
ROSSI XX 18-8 Existing and Planned WBD (P&A)
 API 05-123-25955 WINS F2664
 SE NE 18 1N 65W
 SPUD 07/13/2007

KB: 4994'
 GL 4980'

EXISTING - 01/07/2015



PLANNED



LEGEND

- Open hole
- Perfs
- Biocide water
- Mud
- Existing Cement
- New Cement
- Cast Iron Cement Retainer
- NEW CIBP