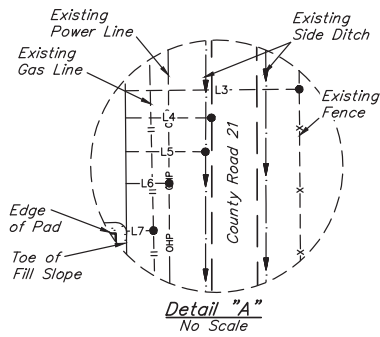


LINE TABLE		
LINE	DIRECTION	LENGTH
L1	EAST	47'
L2	N28°E	314'
L3	EAST	84'
L4	EAST	41'
L5	EAST	38'
L6	EAST	21'
L7	N89°E	11'
L8	EAST	289'
L9	EAST	246'
L10	EAST	242'
L11	EAST	226'
L12	N89°E	219'



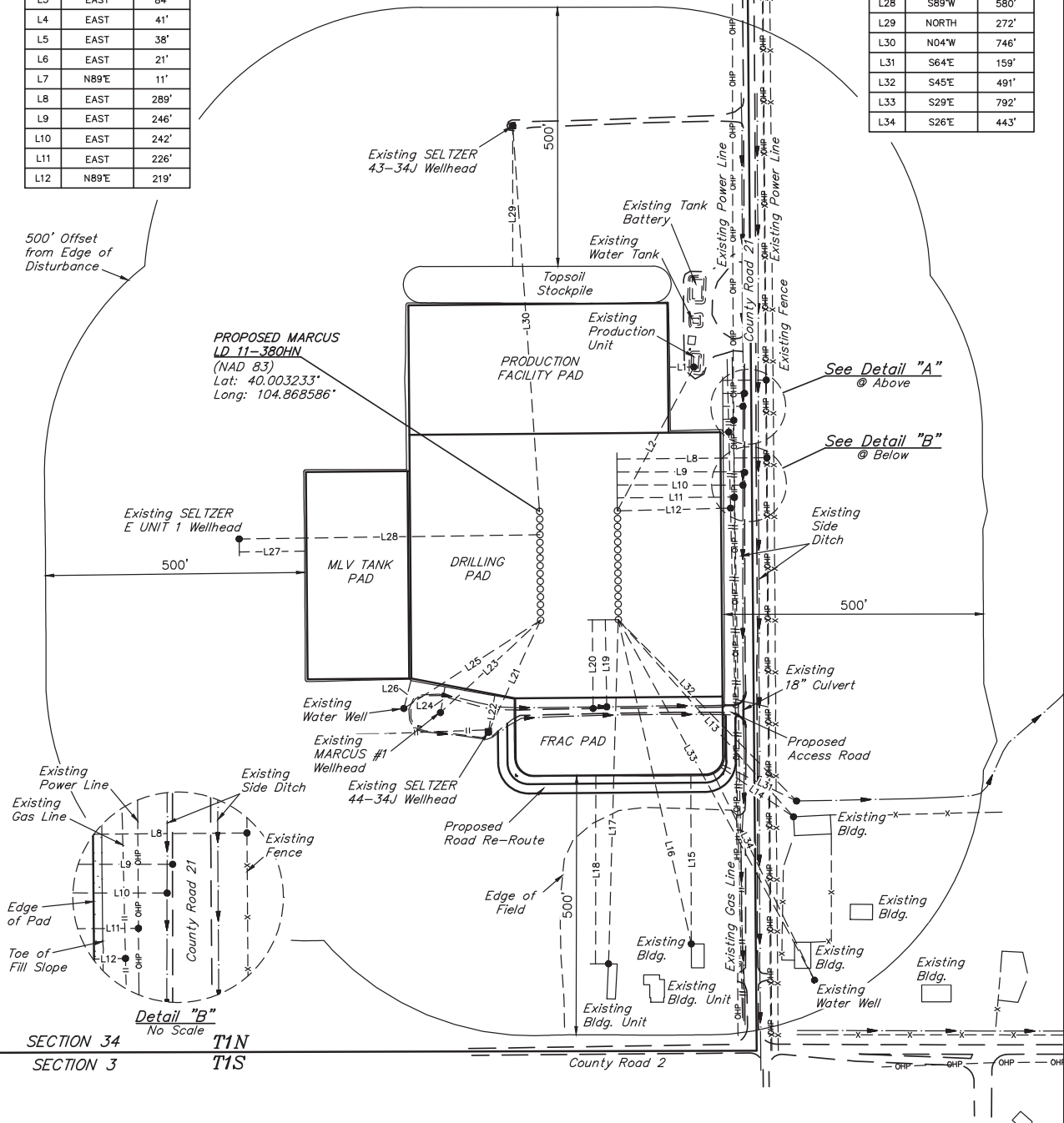
LINE TABLE		
LINE	DIRECTION	LENGTH
L13	S42°E	509'
L14	S56°E	169'
L15	SOUTH	324'
L16	S13°E	641'
L17	S02°W	664'
L18	SOUTH	363'
L19	S01°E	168'
L20	S01°E	171'
L21	S25°W	238'
L22	S10°W	71'
L23	S47°W	263'
L24	S10°W	50'



LINE TABLE		
LINE	DIRECTION	LENGTH
L25	S57°W	314'
L26	S14°W	55'
L27	S89°W	126'
L28	S89°W	580'
L29	NORTH	272'
L30	N04°W	746'
L31	S64°E	159'
L32	S45°E	491'
L33	S29°E	792'
L34	S26°E	443'

500' Offset
from Edge of
Disturbance

PROPOSED MARCUS
LD 11-380HN
(NAD 83)
Lat: 40.003233°
Long: 104.868586°



NOTES:

GREAT WESTERN OIL & GAS COMPANY

MARCUS LD 02-361HN, 362HN, 362HC, 363HN, 364HN, 364HC, 365HN, 367HN, 367HC, 368HN, 369HN, 369HC, OPEN SLOT-O EAST, N EAST, M EAST, 11-371HN, 372HN, 372HC, 373HN, 374HN, 374HC, 376HN, 377HN, 377HC, 378HN, 379HN, 379HC, 380HN, OPEN SLOT-O WEST & N WEST SECTION 34, T1N, R67W, 6th P.M. SE 1/4 SE 1/4



UELS, LLC
Corporate Office * 85 South 200 East
Vernal, UT 84078 * (435) 789-1017

SURVEYED BY: JARED CHRISTOPHER, J.C. SURVEY DATE: 11-20-14
DRAWN BY: J.W. DATE DRAWN: 12-15-14
SCALE: 1" = 200' REVISED: 01-08-15

LOCATION DRAWING

FIGURE #5