

**PROPOSED LOCATION:**  
 MARCUS LD 02-361HN, 362HN, 362HC, 363HN,  
 364HN, 364HC, 365HN, 367HN, 367HC, 368HN,  
 369HN, 369HC, OPEN SLOT-O EAST, N EAST,  
 M EAST, 11-371HN, 372HN, 372HC, 373HN,  
 374HN, 374HC, 376HN, 377HN, 377HC, 378HN,  
 379HN, 379HC, 380HN, OPEN SLOT-O WEST  
 & N WEST

**SEE TOPO "B"**  
 2.4 MI. +/-  
 CR 2/168TH AVE.

0.7 MI. +/-  
 US HIGHWAY 85

0.2 MI. +/-

R  
68  
W

R  
67  
W

R  
67  
W

R  
66  
W

T2N  
T1N

T1N

T1S

T1S

T2S

**LEGEND:**

PROPOSED LOCATION

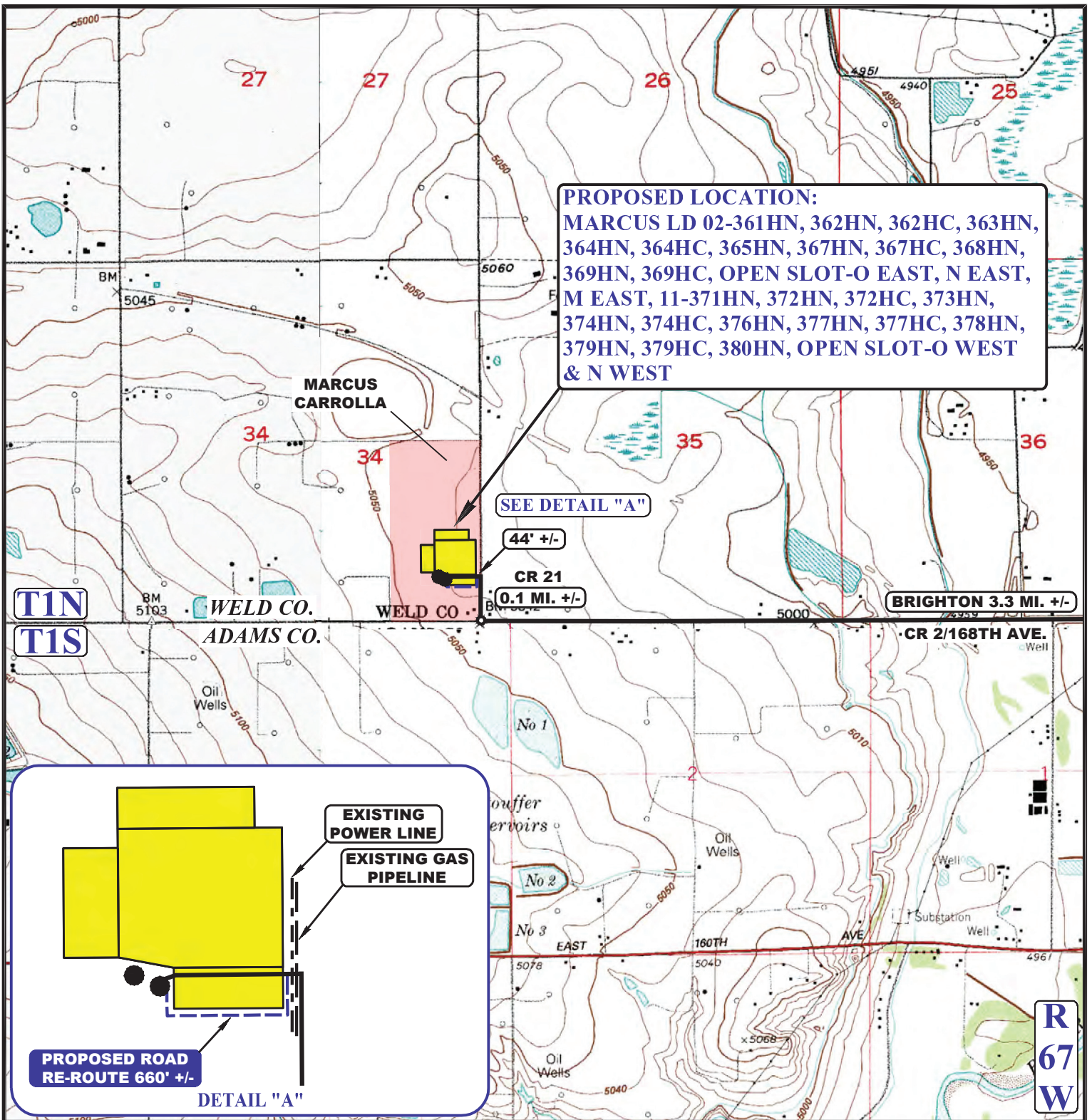
**GREAT WESTERN OIL & GAS COMPANY**

MARCUS LD 02-361HN, 362HN, 362HC, 363HN, 364HN, 364HC,  
 365HN, 367HN, 367HC, 368HN, 369HN, 369HC,  
 OPEN SLOT-O EAST, N EAST, M EAST,  
 11-371HN, 372HN, 372HC, 373HN, 374HN, 374HC,  
 376HN, 377HN, 377HC, 378HN, 379HN, 379HC, 380HN,  
 OPEN SLOT-O WEST & N WEST  
 SECTION 34, T1N, R67W, 6th P.M.  
 SE 1/4 SE 1/4



**UELS, LLC**  
 Corporate Office \* 85 South 200 East  
 Vernal, UT 84078 \* (435) 789-1017

DRAWN BY: J.L.G.	DATE DRAWN: 12-09-14
SCALE: 1:100,000	REVISED: 00-00-00
<b>ACCESS ROAD MAP</b>	<b>TOPO A</b>



NOTE: PARCEL DATA SHOWN HAS BEEN OBTAINED FROM VARIOUS SOURCES AND SHOULD BE USED FOR MAPPING, GRAPHIC AND PLANNING PURPOSES ONLY. NO WARRANTY IS MADE BY UINAH ENGINEERING AND LAND SURVEYING (UELS) FOR ACCURACY OF THE PARCEL DATA.

**LEGEND:**

- EXISTING ROAD
- PROPOSED ROAD
- EXISTING PIPELINE
- EXISTING POWER LINE

**GREAT WESTERN OIL & GAS COMPANY**

MARCUS LD 02-361HN, 362HN, 362HC, 363HN, 364HN, 364HC, 365HN, 367HN, 367HC, 368HN, 369HN, 369HC, OPEN SLOT-O EAST, N EAST, M EAST, 11-371HN, 372HN, 372HC, 373HN, 374HN, 374HC, 376HN, 377HN, 377HC, 378HN, 379HN, 379HC, 380HN, OPEN SLOT-O WEST & N WEST  
SECTION 34, T1N, R67W, 6th P.M.  
SE 1/4 SE 1/4



**UELS, LLC**  
Corporate Office \* 85 South 200 East  
Vernal, UT 84078 \* (435) 789-1017

DRAWN BY: J.L.G.	DATE DRAWN: 12-09-14
SCALE: 1" = 2000'	REVISED: 00-00-00
<b>ACCESS ROAD MAP</b>	<b>TOPO B</b>