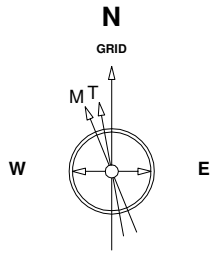


Great Western Operating Company, LLC

Location Colorado
Field Wattenberg
Installation DeTienne 10

Slot Slot #2
Well DeTienne FD 10-239HN
Wellbore DeTienne FD 10-239HN (PWB)

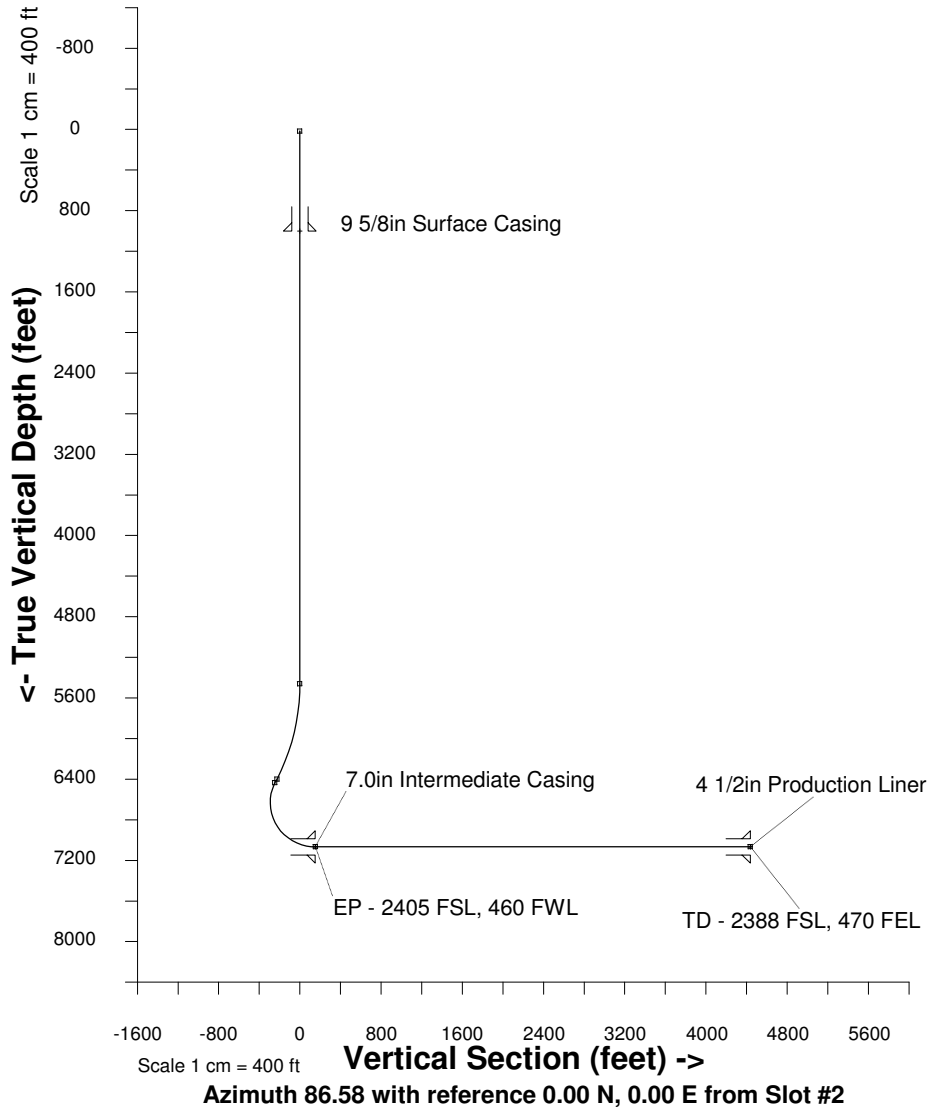
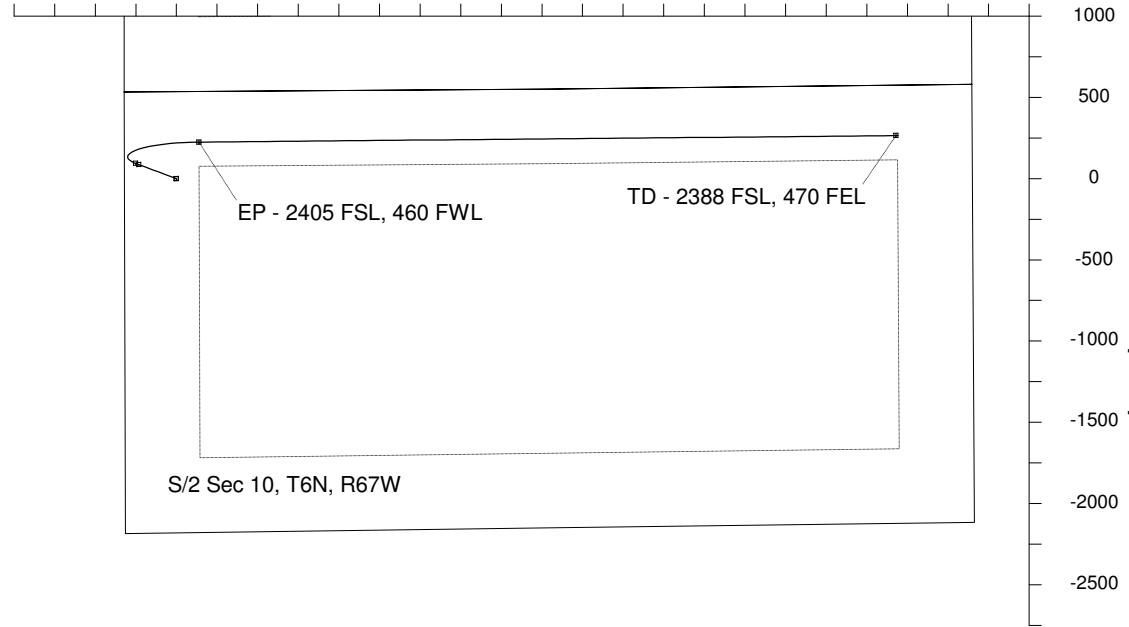


12-Nov-2014
IGRF Model [1900.0-2015.0] Dip: -29.76 deg Field: 32232.1 nT
Magnetic North is 4.43 deg West of True North
GRID North is 0.40 deg East of True North
To correct azimuth from True to GRID subtract 0.40 deg
To correct azimuth from Magnetic to GRID subtract 4.83 deg

Scale 1 cm = 250 ft

East (feet) ->

-1000 -500 0 500 1000 1500 2000 2500 3000 3500 4000 4500 5000



WELL PROFILE DATA

Point	MD	Inc	Azi	TVD	North	East	deg/100ft	V. Sect
Tie on	16.20	0.00	0.00	16.20	0.00	0.00	0.00	0.00
KOP	5460.00	-0.00	0.00	5460.00	0.00	0.00	0.00	0.00
End of Build	6441.78	29.45	290.44	6399.10	86.21	-231.29	3.00	-225.74
End of Hold	6484.90	29.45	290.44	6436.65	93.61	-251.16	0.00	-245.13
Target EP - 2405 FSL,	7387.45	90.00	89.47	7067.00	224.66	139.17	13.00	152.32
T.D. & Target TD - 2388	11677.25	90.00	89.47	7067.00	264.51	4428.79	0.00	4436.68

Created by admin
Date plotted 12-Nov-2014
Plot reference is DeTienne FD 10-239HN (PWB).
Ref wellpath is DeTienne FD 10-239HN (PWP#1).
Coordinates are in feet reference Slot #2.
True Vertical Depths are reference Rig Datum.
Measured Depths are reference Rig Datum.
Rig Datum: Planned Datum #1
Rig Datum to Mean Sea Level: 4854.80 ft.
Plot North is aligned to GRID North.