

LEGEND:

- = 90° SYMBOL
- = PROPOSED WELLHEAD.
- = TARGET BOTTOM HOLE.
- ◇ = ENTRY POINT
- ▲ = SECTION CORNERS LOCATED.

T6N, R67W, 6th P.M.

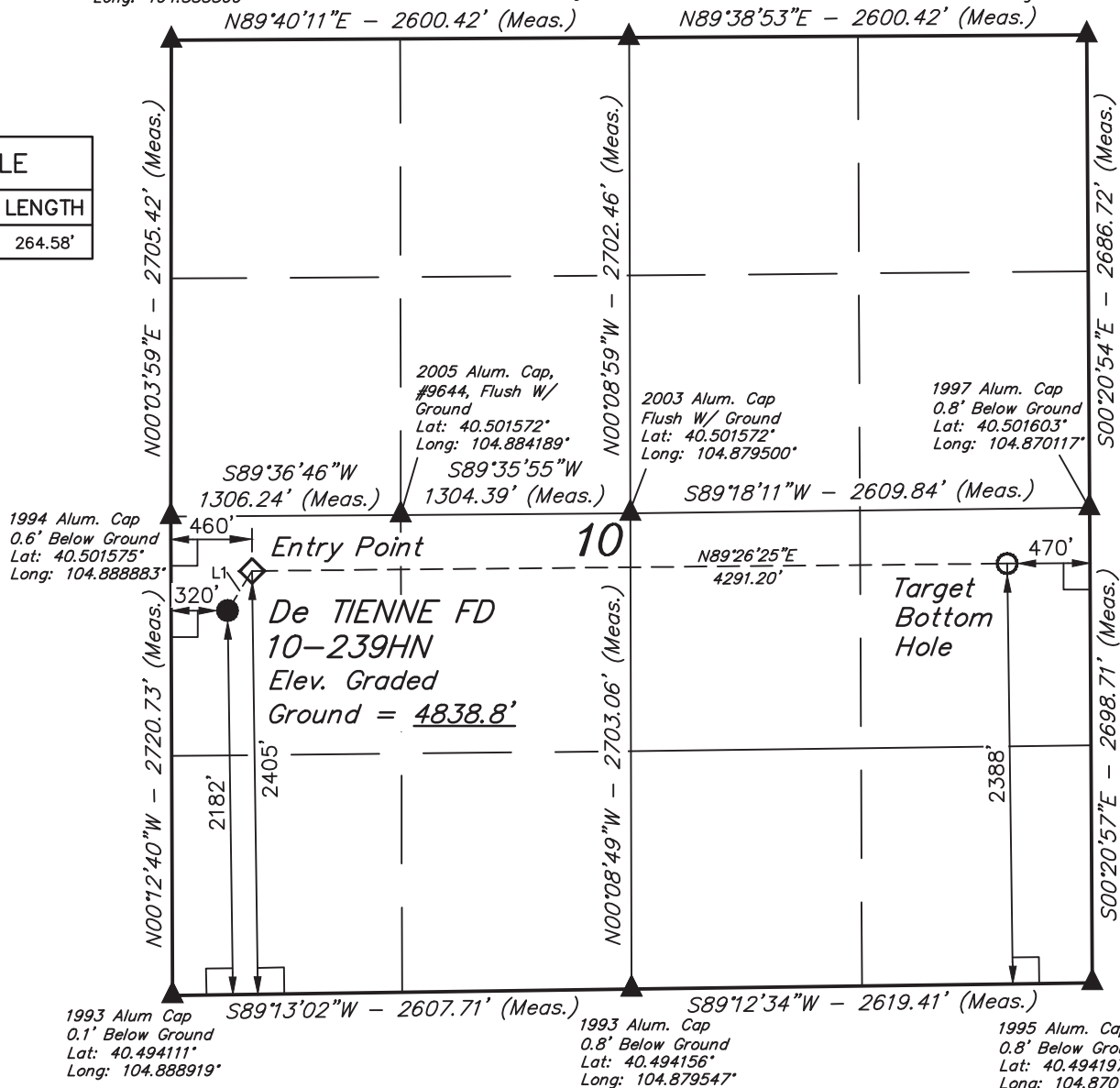
1994 Alum. Cap
0.6' Below Ground
Lat: 40.509000°
Long: 104.888800°

1997 Alum. Cap
0.5' Below Ground
Lat: 40.508986°
Long: 104.879450°

2000 Alum. Cap
0.5' Below Ground
Lat: 40.508975°
Long: 104.870100°

LINE TABLE

LINE	DIRECTION	LENGTH
L1	N31°43'16"E	264.58'



PDOP = 1.4

NAD 83 (TARGET BOTTOM HOLE)

LATITUDE = 40°30'02.68" (40.500744)
LONGITUDE = 104°52'18.51" (104.871808)

NAD 27 (TARGET BOTTOM HOLE)

LATITUDE = 40°30'02.74" (40.500761)
LONGITUDE = 104°52'16.61" (104.871281)

NAD 83 (ENTRY POINT)

LATITUDE = 40°30'02.58" (40.500717)
LONGITUDE = 104°53'14.04" (104.887233)

NAD 27 (ENTRY POINT)

LATITUDE = 40°30'02.65" (40.500736)
LONGITUDE = 104°53'12.14" (104.886706)

NAD 83 (SURFACE LOCATION)

LATITUDE = 40°30'00.37" (40.500103)
LONGITUDE = 104°53'15.86" (104.887739)

NAD 27 (SURFACE LOCATION)

LATITUDE = 40°30'00.44" (40.500122)
LONGITUDE = 104°53'13.96" (104.887211)

BASIS OF BEARINGS

BASIS OF BEARINGS IS A G.P.S. OBSERVATION

BASIS OF ELEVATION

USGS COOPERATIVE BASE NETWORK CONTROL STATION,
DESIGNATION "VERMILYEA". NGS DATA SHEET LISTS THE
NAVD 88 ELEVATION AS BEING 5026 FEET.

GREAT WESTERN OIL & GAS COMPANY

De TIENNE FD 10-239HN
NW 1/4 SW 1/4, SECTION 10, T6N, R67W, 6th P.M.
WELD COUNTY, COLORADO

SURVEYED BY: DALAS NEILSEN	DATE: 10-17-14
DRAWN BY: J.W.	DATE DRAWN: 05-22-14
SCALE: 1" = 1000'	REVISED: 10-18-14

WELL LOCATION PLAT



UELS, LLC
Corporate Office * 85 South 200 East
Vernal, UT 84078 * (435) 789-1017

