

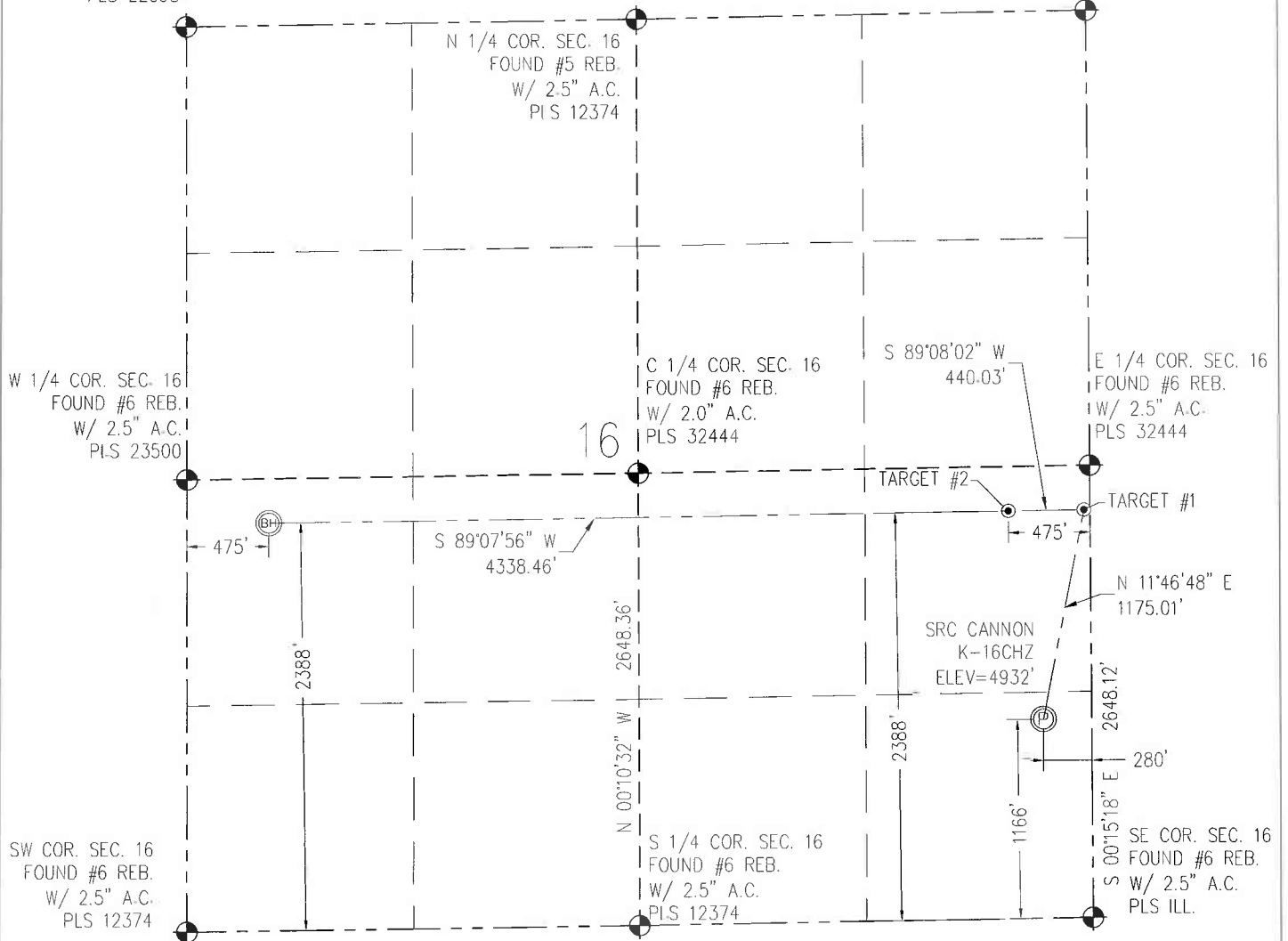
# WELL LOCATION CERTIFICATE

THIS MAP DOES NOT REPRESENT A BOUNDARY SURVEY

SECTION 16  
TOWNSHIP 4 NORTH  
RANGE 68 WEST

NW COR. SEC. 16  
FOUND #6 REB.  
W/ 3.25" A.C.  
PLS 22098

NE COR. SEC. 16  
FOUND #6 REB.  
W/ 3.25" A.C.  
PLS 22098



N IN ACCORDANCE WITH A REQUEST FROM CRAIG RASMUSON - SYNERGY RESOURCES, BASELINE ENGINEERING CORP. HAS DETERMINED THE LOCATION OF THE SRC CANNON K-16CHZ TO BE 1166' FSL AND 280' FEL, AS MEASURED AT NINETY (90) DEGREES FROM THE SECTION LINE OF SECTION 16, TOWNSHIP 4 NORTH, RANGE 68 WEST AND THE BOTTOM HOLE LOCATION TO BE 2388' FSL AND 475' FWL OF SECTION 16, TOWNSHIP 4 NORTH, RANGE 68 WEST, 6TH PRINCIPAL MERIDIAN, WELD COUNTY, COLORADO.

I HEREBY CERTIFY THAT THIS WELL LOCATION CERTIFICATE WAS PREPARED BY ME, OR UNDER MY DIRECT SUPERVISION, THAT THE FIELD WORK WAS COMPLETED ON 07/08/2013, THAT IT IS NOT A LAND SURVEY PLAT OR AN IMPROVEMENT SURVEY PLAT, AND THAT IT IS NOT TO BE RELIED UPON FOR ESTABLISHMENT OF FENCE, BUILDING, OR OTHER FUTURE IMPROVEMENT LINES.

0 1000  
Scale 1" = 1000 ft

## NOTES:

- 1) LAT/LONG SHOWN ARE BASED ON A GPS OBSERVATION (NAD83).
- 2) BEARINGS SHOWN ARE GRID BEARINGS OF THE COLORADO STATE PLANE COORDINATE SYSTEM, NORTH ZONE, NORTH AMERICAN DATUM 1983/2007.
- 3) GROUND ELEVATIONS ARE BASED ON A GPS OBSERVATION (NAVD 88 DATUM).
- 4) ALL DISTANCES SHOWN ARE FIELD MEASURED UNLESS OTHERWISE NOTED.
- 5) THE NEAREST EXISTING WELL IS: NONE IN QUARTER SECTION
- 6) IMPROVEMENTS: SEE LOCATION DRAWING EXHIBIT FOR ALL VISIBLE IMPROVEMENTS WITHIN 600' OF WELL HEAD.
- 7) SURFACE USE: AGRICULTURAL FIELD
- 8) OPERATOR NAME: BRETT BIRCH

NOTICE: According to Colorado law you MUST commence any legal action based upon any defect in this W.L.C. within three years after you first discover such defect. In no event may any action based upon any defect in this W.L.C. be commenced more than ten years from this said date of the certification shown hereon.

## SURFACE HOLE:

LATITUDE: 40.309346° N  
LONGITUDE: 104.999848° W  
PDOP: 0.8  
1/4, 1/4: SE1/4SE1/4  
NEAREST PROPERTY LINE: 280' E

## BOTTOM HOLE:

LATITUDE: 40.312579° N  
LONGITUDE: 105.016094° W

## TARGET #1:

LATITUDE: 40.312705° N  
LONGITUDE: 104.998964° W

## TARGET #2:

LATITUDE: 40.312693° N  
LONGITUDE: 105.000542° W

## LEGEND

- ⊗ - FOUND/SET SURVEY MONUMENT PER MONUMENT RECORD EXCEPTIONS NOTED.
- - CALCULATED SURVEY MONUMENT POSITION
- (C) - CALCULATED DIMENSION



AARON ALVIN DEMO  
Professional Land Surveyor Registration No. 38285  
State of Colorado  
FOR AND ON BEHALF OF BASELINE ENGINEERING CORP.

Completed  
1/14/2015

PROJECT #: SYN04N68W16-01