

LEGEND:

- = 90° SYMBOL
- = PROPOSED WELLHEAD.
- = TARGET BOTTOM HOLE.
- ◆ = ENTRY POINT
- ▲ = SECTION CORNERS LOCATED.

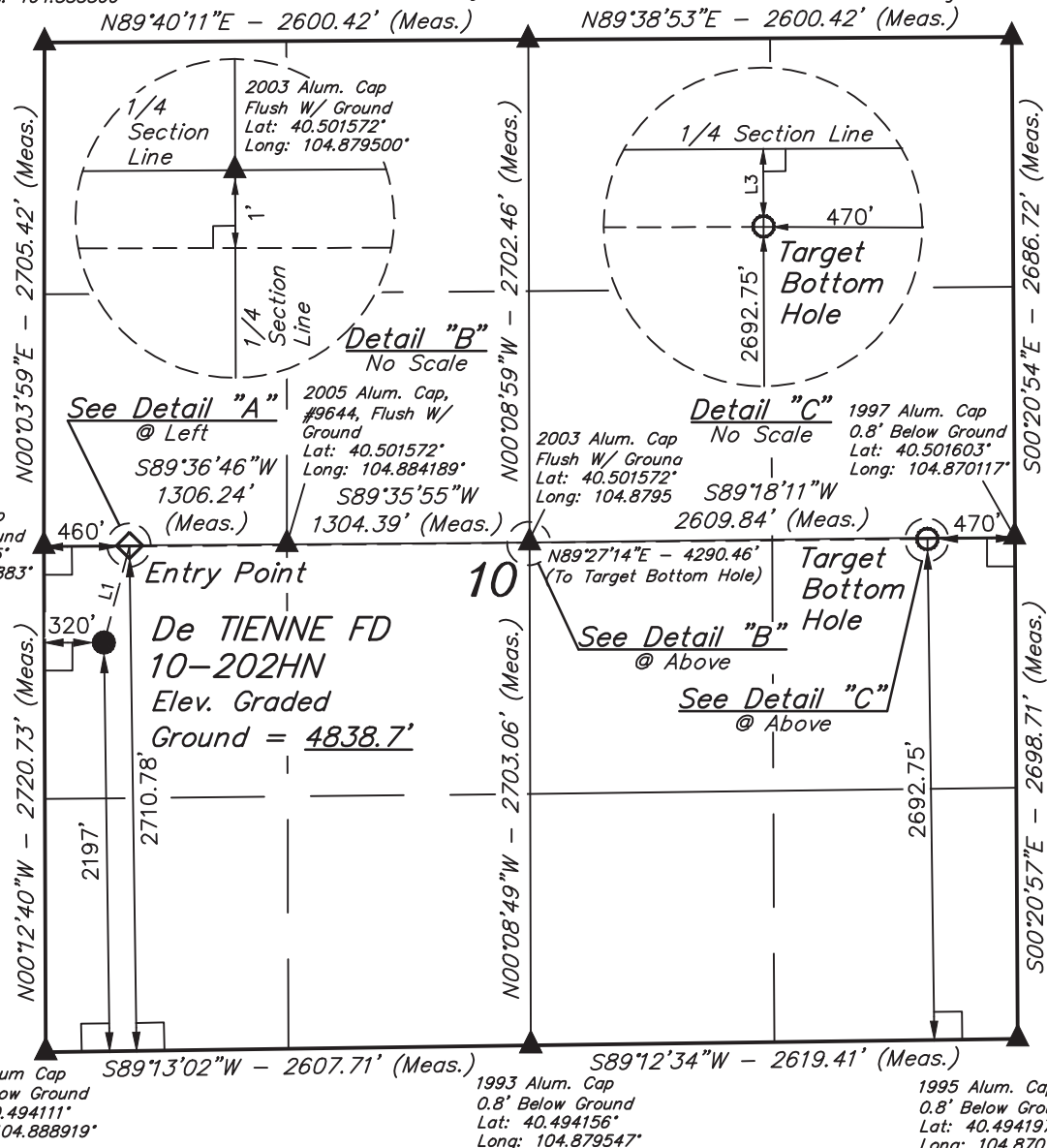
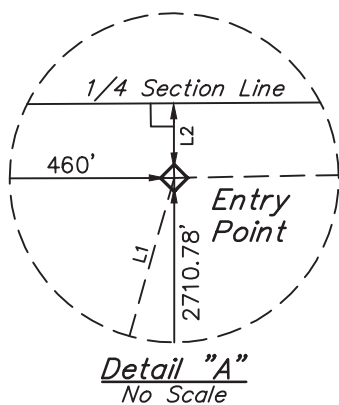
LINE TABLE		
LINE	DIRECTION	LENGTH
L1	N14°58'56"E	533.96'
L2	N00°23'14"W	6.64'
L3	N00°41'49"W	6.64'

T6N, R67W, 6th P.M.

1994 Alum. Cap
0.6' Below Ground
Lat: 40.509000°
Long: 104.888800°

1997 Alum. Cap
0.5' Below Ground
Lat: 40.508986°
Long: 104.879450°

2000 Alum. Cap
0.5' Below Ground
Lat: 40.508975°
Long: 104.870100°



PDOP = 1.4

NAD 83 (TARGET BOTTOM HOLE)
LATITUDE = 40°30'05.69" (40.501581)
LONGITUDE = 104°52'18.50" (104.871806)
NAD 27 (TARGET BOTTOM HOLE)
LATITUDE = 40°30'05.75" (40.501597)
LONGITUDE = 104°52'16.61" (104.871281)

NAD 83 (ENTRY POINT)	NAD 83 (SURFACE LOCATION)
LATITUDE = 40°30'05.61" (40.501558)	LATITUDE = 40°30'00.52" (40.500144)
LONGITUDE = 104°53'14.03" (104.887231)	LONGITUDE = 104°53'15.86" (104.887739)
NAD 27 (ENTRY POINT)	NAD 27 (SURFACE LOCATION)
LATITUDE = 40°30'05.67" (40.501575)	LATITUDE = 40°30'00.59" (40.500164)
LONGITUDE = 104°53'12.13" (104.886703)	LONGITUDE = 104°53'13.96" (104.887211)

BASIS OF BEARINGS
BASIS OF BEARINGS IS A G.P.S. OBSERVATION
BASIS OF ELEVATION

USGS COOPERATIVE BASE NETWORK CONTROL STATION,
DESIGNATION "VERMILYEA". NGS DATA SHEET LISTS THE
NAVD 88 ELEVATION AS BEING 5026 FEET.



UELS, LLC
Corporate Office * 85 South 200 East
Vernal, UT 84078 * (435) 789-1017

CERTIFICATE
THIS IS TO CERTIFY THAT THE ABOVE PLAT WAS PREPARED FROM FIELD
NOTES OF ACTUAL SURVEYS MADE BY ME OR UNDER MY SUPERVISION
AND THAT THE SAME ARE TRUE AND CORRECT TO THE BEST OF MY
KNOWLEDGE AND BELIEF.

REGISTERED LAND SURVEYOR
REGISTRATION NO. 28285
STATE OF COLORADO

GREAT WESTERN OIL & GAS COMPANY

De TIENNE FD 10-202HN
NW 1/4 SW 1/4, SECTION 10, T6N, R67W, 6th P.M.
WELD COUNTY, COLORADO

SURVEYED BY: DALAS NEILSEN	DATE: 10-17-14
DRAWN BY: J.W.	DATE DRAWN: 05-22-14
SCALE: 1" = 1000'	REVISED: 10-18-14

WELL LOCATION PLAT