

Cynosure Energy LLC

Fed 14/15-8-21

Frontier 28

Post Job Summary

Cement Surface Casing

Date Prepared: 12/27/2014

Job Date: 12/13/2014

Submitted by: Patrick Ealey – Grand Junction Cement Engineer

The Road to Excellence Starts with Safety

Sold To #: 373950		Ship To #: 3543092		Quote #:		Sales Order #: 0901927485	
Customer: CYNOSURE ENERGY LLC				Customer Rep: PAT BLACKMER			
Well Name: FEDERAL			Well #: 14/15-8-21			API/UWI #: 05-045-22451-00	
Field: KOKOPELLI		City (SAP): NEW CASTLE		County/Parish: GARFIELD		State: COLORADO	
Legal Description: SE NE-21-6S-91W-2379FNL-742FEL							
Contractor:				Rig/Platform Name/Num: Frontier 28			
Job BOM: 7521							
Well Type: DIRECTIONAL GAS							
Sales Person: HALAMERICA\HB50180				Srvc Supervisor: Eric Carter			
Job							

Formation Name			
Formation Depth (MD)	Top	0 FT	Bottom 1535 FT
Form Type			BHST
Job depth MD	1512ft		Job Depth TVD
Water Depth			Wk Ht Above Floor 4 FT
Perforation Depth (MD)	From		To

Well Data										
Description	New / Used	Size in	ID in	Weight lbm/ft	Thread	Grade	Top MD ft	Bottom MD ft	Top TVD ft	Bottom TVD ft
Casing		9.625	8.921	36	STC	J-55	0	1512	0	0
Open Hole Section			13.5				0	1535	0	0

Tools and Accessories									
Type	Size in	Qty	Make	Depth ft		Type	Size in	Qty	Make
Guide Shoe						Top Plug	9.625	1	HES
Float Shoe						Bottom Plug			
Float Collar						SSR plug set			
Insert Float						Plug Container	9.625	1	HES
Stage Tool						Centralizers			

Miscellaneous Materials											
Gelling Agt		Conc		Surfactant		Conc		Acid Type		Qty	Conc
Treatment Fld		Conc		Inhibitor		Conc		Sand Type		Size	Qty

Fluid Data										
Stage/Plug #: 1										
Fluid #	Stage Type	Fluid Name	Qty	Qty UoM	Mixing Density lbm/gal	Yield ft3/sack	Mix Fluid Gal	Rate bbl/min	Total Mix Fluid Gal	
1	Fresh Water Spacer	Fresh Water Spacer	20	bbl	8.33			4		
Fluid #	Stage Type	Fluid Name	Qty	Qty UoM	Mixing Density lbm/gal	Yield ft3/sack	Mix Fluid Gal	Rate bbl/min	Total Mix Fluid Gal	
2	VariCem GJ5	VARICEM (TM) CEMENT	260	sack	12.3	2.45	14.17	6		

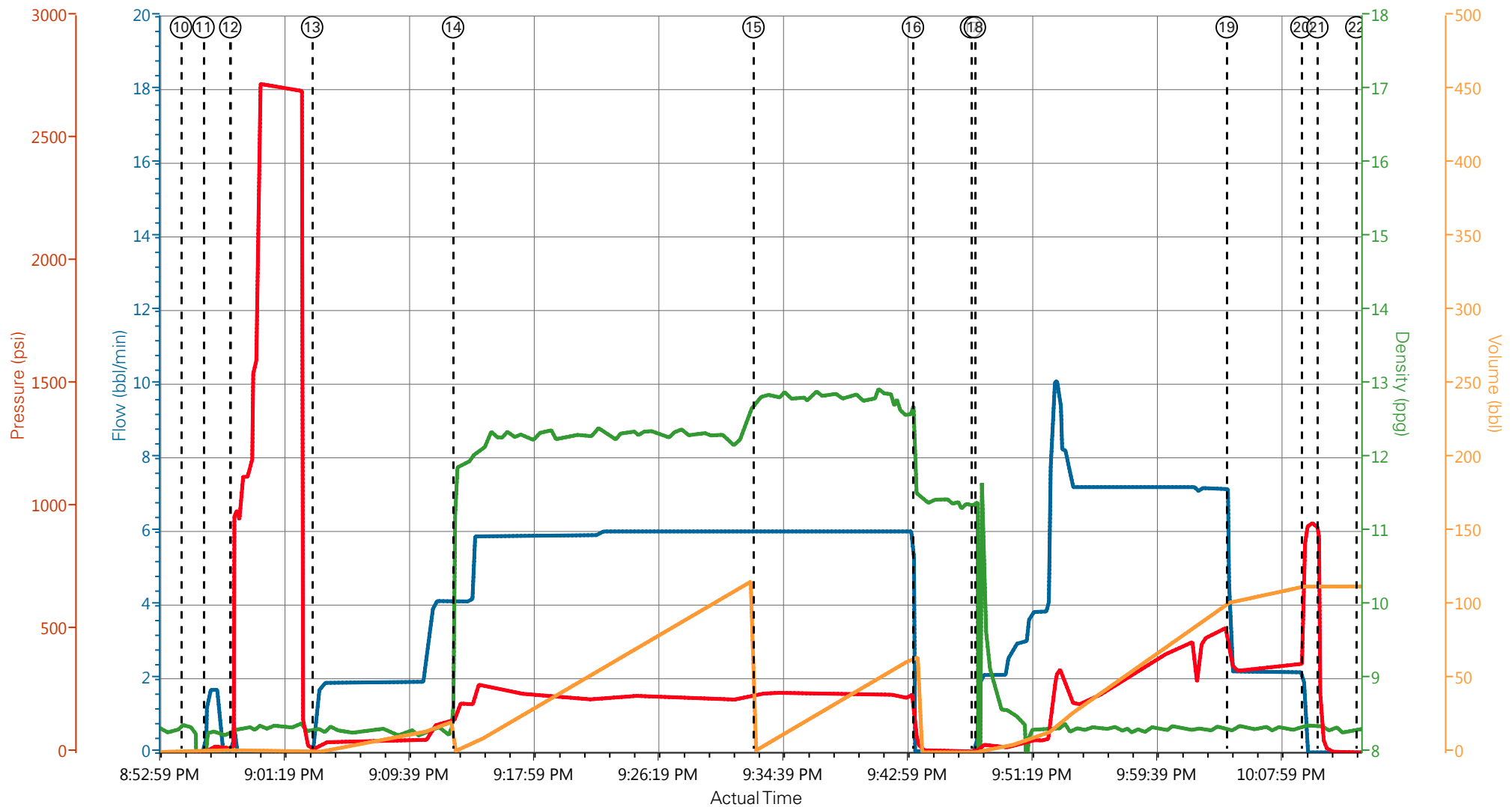
14.10 Gal		FRESH WATER							
Fluid #	Stage Type	Fluid Name	Qty	Qty UoM	Mixing Density lbm/gal	Yield ft3/sack	Mix Fluid Gal	Rate bbl/mi n	Total Mix Fluid Gal
3	VariCem GJ5	VARICEM (TM) CEMENT	160	sack	12.8	2.18	12.11	6	
12.05 Gal		FRESH WATER							
Fluid #	Stage Type	Fluid Name	Qty	Qty UoM	Mixing Density lbm/gal	Yield ft3/sack	Mix Fluid Gal	Rate bbl/mi n	Total Mix Fluid Gal
4	Displacement		113.4	bbl	8.3			7	
Fluid #	Stage Type	Fluid Name	Qty	Qty UoM	Mixing Density lbm/gal	Yield ft3/sack	Mix Fluid Gal	Rate bbl/mi n	Total Mix Fluid Gal
5	Top Out Cement	HALCEM (TM) SYSTEM	0	sack	15.6	1.19			
94 lbm		TYPE I / II CEMENT, BULK (101439798)							
5.11 Gal		FRESH WATER							
Cement Left In Pipe		Amount	44 ft		Reason		Shoe Joint		
Comment									

3.5 Job Event Log

Type	Seq. No.	Activity	Date	Time	Source	Downhole Density (ppg)	Pass-Side Pump Pressure (psi)	Combined Pump Rate (bbl/min)	Pump Stage Total (bbl)	Comment
Event	1	Call Out	12/13/2014	07:00	USER					
Event	2	Depart Yard Safety Meeting	12/13/2014	10:50	USER					ATTENDED BY ALL HES CREW
Event	3	Crew Leave Yard	12/13/2014	11:00	USER					
Event	4	Arrive At Loc	12/13/2014	13:00	USER					RIG RUNNING CASING
Event	5	Assessment Of Location Safety Meeting	12/13/2014	13:10	USER					ATTENDED BY ALL HES CREW
Event	6	Other	12/13/2014	13:20	USER					SPOT EQUIPMENT
Event	7	Pre-Rig Up Safety Meeting	12/13/2014	18:50	USER					ATTENDED BY ALL HES CREW
Event	8	Rig-Up Equipment	12/13/2014	19:00	USER					
Event	9	Pre-Job Safety Meeting	12/13/2014	20:00	USER					ATTENDED BY ALL HES CREW, RIG CREW AND COMPANY REP.
Event	10	Other	12/13/2014	20:54:36	USER					TP 1512', TD 1535', MW 9.7 PPG, CASING 9.625", 36#, J55, HOLE 13.5", RIG CIRCULATED FOR 3 HR'S PRIOR TO JOB
Event	11	Other	12/13/2014	20:56:07	USER	8.34	70	2	2	FRESH WATER
Event	12	Test Lines	12/13/2014	20:57:54	USER					PRESSURED UP TO 2750 PSI, PRESSURE HELD
Event	13	Pump Spacer	12/13/2014	21:03:23	USER	8.34	125	4	20	FRESH WATER
Event	14	Pump Lead Cement	12/13/2014	21:12:48	USER	12.3	270	6	113.4	260 SKS VARICEM MIXED AT 12.3 PPG, 2.45 YIELD, 14.17 GL/SK
Event	15	Pump Tail Cement	12/13/2014	21:32:53	USER	12.8	240	6	62.1	160 SKS VARICEM MIXED AT 12.8 PPG, 2.18 YIELD, 12.11 GL/SK
Event	16	Shutdown	12/13/2014	21:43:33	USER					
Event	17	Drop Top Plug	12/13/2014	21:47:26	USER					PLUG LAUNCHED

Event	18	Pump Displacement	12/13/2014	21:47:41	USER	8.34	520	7	103.4	FRESH WATER
Event	19	Slow Rate	12/13/2014	22:04:32	USER	8.34	350	2	10	
Event	20	Bump Plug	12/13/2014	22:09:31	USER		940			PLUG LANDED
Event	21	Check Floats	12/13/2014	22:10:36	USER					FLOATS HELD
Event	22	Other	12/13/2014	22:13:12	USER					GOOD CIRCULATION THROUGHOUT JOB, 20 BBLS CEMENT TO SURFACE, PIPE NOT MOVED DURING JOB.
Event	23	Post-Job Safety Meeting (Pre Rig-Down)	12/13/2014	22:20	USER					ATTENDED BY ALL HES CREW
Event	24	Rig-Down Equipment	12/13/2014	22:30	USER					
Event	25	Depart Location Safety Meeting	12/13/2014	23:20	USER					ATTENDED BY ALL HES CREW
Event	26	Crew Leave Location	12/13/2014	23:30	USER					THANK YOU USING HALLIBURTON CEMENT, ERIC CARTER AND CREW.

CYNOSURE - FEDERAL 14-15-8-21 - SURFACE



① Call Out n/a;n/a;n/a;n/a	⑥ Other n/a;n/a;n/a;n/a	⑪ Fill Lines 1.7;8.27;3;0.1	⑯ Shutdown 0;11.51;64;64.4	21 Check Float
② Depart Yard Safety Meeting n/a;n/a;n/a;n/a	⑦ Pre-Rig Up Safety Meeting n/a;n/a;n/a;n/a	⑫ Test Lines 0.7;8.32;904;1.5	⑰ Drop Top Plug 0;11.39;4;0	22 End Job 0;8
③ Crew Leave Yard n/a;n/a;n/a;n/a	⑧ Rig-Up Equipment n/a;n/a;n/a;n/a	⑬ Pump Spacer 0.6;8.33;12;0	⑱ Pump Displacement 1.56;11.36;9.06;0.1	23 Post-Job Sa
④ Arrive At Loc n/a;n/a;n/a;n/a	⑨ Pre-Job Safety Meeting n/a;n/a;n/a;n/a	⑭ Pump Lead Cement 4.1;11.85;166;1.3	⑲ Slow Rate 2.2;8.28;384;102	24 Rig-Down E
⑤ Assessment Of Location Safety Meeting n/a;n/a;n/a;n/a	⑩ Start Job 0;8.37;-1;0	⑮ Pump Tail Cement 6;12.74;235;1.8	20 Bump Plug 0;8.36;852;112.7	25 Depart Loca

HALLIBURTON | iCem® Service

Created: 2014-12-13 15:00:56, Version: 3.0.121

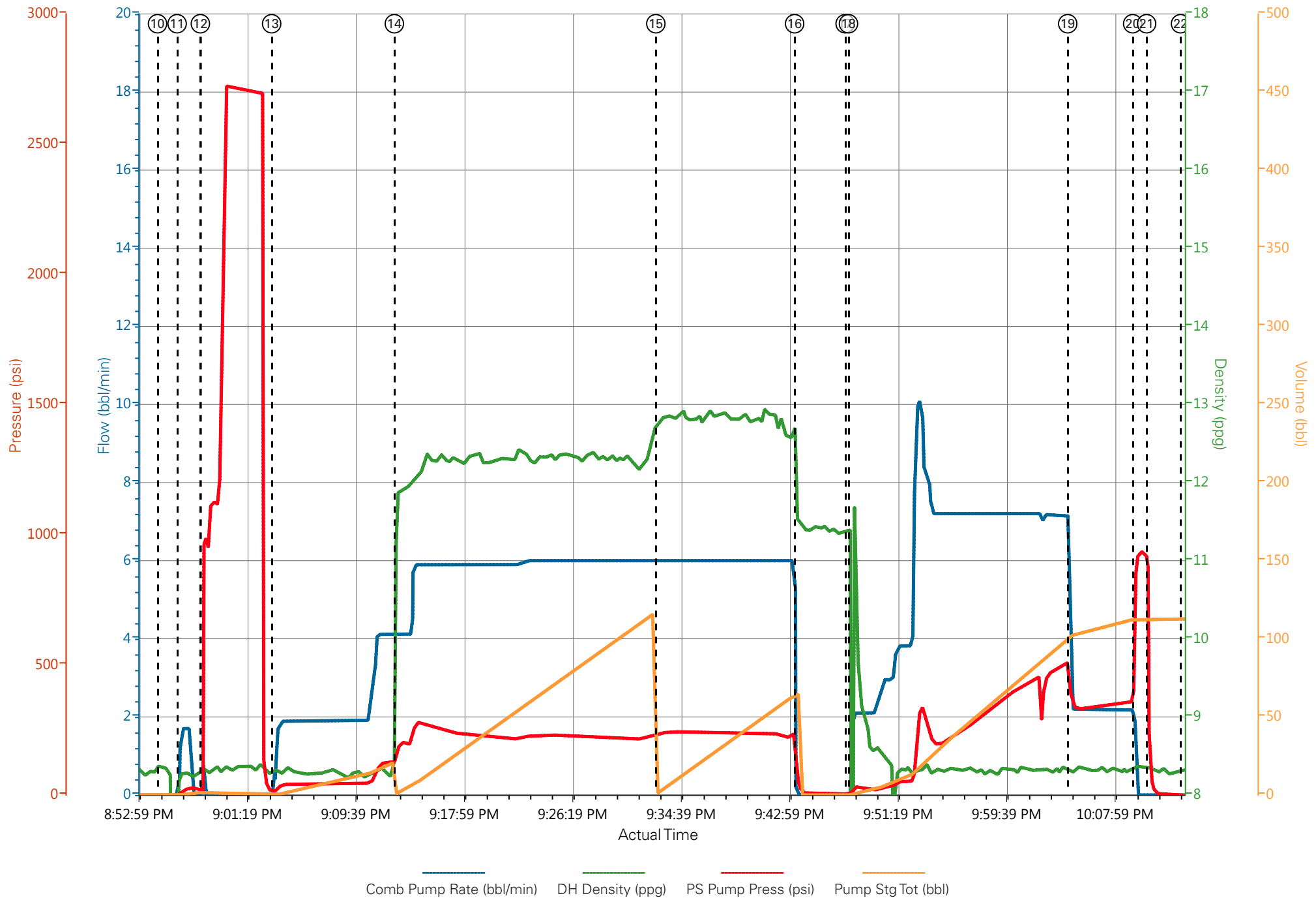
Edit

Customer: DEJOUR ENERGY (USA) CORP
Representative: PAT BLACKMER

Job Date: 12/13/2014 7:55:28 PM
Sales Order #: 0901927485

Well: FEDERAL 14/15-8-21
ERIC CARTER: KEVIN BENNETT/ELITE 2

CYNOSURE - FEDERAL 14-15-8-21 - SURFACE



HALLIBURTON

Water Analysis Report

Company: CYNOSURE
Submitted by: ERIC CARTER
Attention: J.Trout
Lease: FRONTIER 28
Well #: FED 14/15-8-21

Date: 12/13/2014
Date Rec.: 12/13/2014
S.O.#: 901927485
Job Type: SURFACE

Specific Gravity	<i>MAX</i>	<i>1</i>
pH	<i>8</i>	<i>7</i>
Potassium (K)	<i>5000</i>	<i>1000</i> Mg / L
Hardness	<i>500</i>	<i>250</i> Mg / L
Iron (FE2)	<i>300</i>	<i>10</i> Mg / L
Chlorides (Cl)	<i>3000</i>	<i>500</i> Mg / L
Sulfates (SO ₄)	<i>1500</i>	<i><200</i> Mg / L
Temp	<i>40-80</i>	<i>60</i> Deg
Total Dissolved Solids		<i>OR</i> Mg / L

Respectfully: ERIC CARTER

Title: CEMENTING SUPERVISOR

Location: Grand Junction, CO

NOTICE:

This report is limited to the described sample tested. Any person using or relying on this report agrees that Halliburton shall not be liable for any loss or damage whether due to act or omission resulting from such report or its

Sales Order #: 0901927485	Line Item: 10	Survey Conducted Date: 12/13/2014
Customer: CYNOSURE ENERGY LLC		Job Type (BOM): CMT SURFACE CASING BOM
Customer Representative: PAT BLACKMER		API / UWI: (leave blank if unknown) 05-045-22451-00
Well Name: FEDERAL		Well Number: 0080618208
Well Type: DIRECTIONAL GAS	Well Country: USA	
H2S Present: No	Well State: COLORADO	Well County: GARFIELD

Dear Customer,

We hope that you were satisfied with the service quality of this job performed by Halliburton. It is the aim of our management and service personnel to deliver equipment and service of a standard unmatched in the service sector of the energy industry.

Please take the time to let us know if our performance met with your satisfaction. Please be as critical as possible to ensure we constantly improve our service. Your comments are of great value to us and are intended for the exclusive use of Halliburton.

CUSTOMER SATISFACTION SURVEY

CATEGORY	CUSTOMER SATISFACTION RESPONSE	
Survey Conducted Date	The date the survey was conducted	12/13/2014
Survey Interviewer	The survey interviewer is the person who initiated the survey.	HX15491
Customer Participation	Did the customer participate in this survey? (Y/N)	Yes
Customer Representative	Enter the Customer representative name	PAT BLACKMER
HSE	Was our HSE performance satisfactory? Circle Y or N	Yes
Equipment	Were you satisfied with our Equipment? Circle Y or N	Yes
Personnel	Were you satisfied with our people? Circle Y or N	Yes
Customer Comment	Customer's Comment	

CUSTOMER SIGNATURE

Sales Order #: 0901927485	Line Item: 10	Survey Conducted Date: 12/13/2014
Customer: CYNOSURE ENERGY LLC		Job Type (BOM): CMT SURFACE CASING BOM
Customer Representative: PAT BLACKMER		API / UWI: (leave blank if unknown) 05-045-22451-00
Well Name: FEDERAL		Well Number: 0080618208
Well Type: DIRECTIONAL GAS	Well Country: USA	
H2S Present: No	Well State: COLORADO	Well County: GARFIELD

KEY PERFORMANCE INDICATORS

General	
Survey Conducted Date	12/13/2014
The date the survey was conducted	

Cementing KPI Survey	
Type of Job	0
Select the type of job. (Cementing or Non-Cementing)	
Select the Maximum Deviation range for this Job	Vertical
What is the highest deviation for the job you just completed? This may not be the maximum well deviation.	
Total Operating Time (hours)	4
Total Operating Hours Including Rig-up, Pumping, Rig-down. Enter in decimal format.	
HSE Incident, Accident, Injury	No
HSE Incident, Accident, Injury. This should be recordable incidents only.	
Was the job purpose achieved?	Yes
Was the job delivered correctly as per customer agreed design?	
Pumping Hours	1
Total number of hours pumping fluid on this job. Enter in decimal format.	
Type of Rig Classification Job Was Performed	Drilling Rig (Portable)
Type Of Rig (classification) Job Was Performed On	
Number Of JSAs Performed	5
Number Of Jsas Performed	
Was this a Primary Cement Job (Yes / No)	Yes
Primary Cement Job= Casing job, Liner job, or Tie-back job.	
Number of Unplanned Shutdowns	0
Unplanned shutdown is when injection stops for any period of time.	
Customer Non-Productive Rig Time (hrs)	0

Sales Order #: 0901927485	Line Item: 10	Survey Conducted Date: 12/13/2014
Customer: CYNOSURE ENERGY LLC		Job Type (BOM): CMT SURFACE CASING BOM
Customer Representative: PAT BLACKMER		API / UWI: (leave blank if unknown) 05-045-22451-00
Well Name: FEDERAL		Well Number: 0080618208
Well Type: DIRECTIONAL GAS	Well Country: USA	
H2S Present: No	Well State: COLORADO	Well County: GARFIELD

Lost time due to Halliburton in the start, execution, or completion of an ordered service or product, or delays in a follow-on service. Enter in decimal format. 0 if none.	
Did We Run Wiper Plugs? Did We Run Top And Bottom Casing Wiper Plugs?	Top
If a top plug was run, was the plug bumped? (Yes/No/N/A) If a top plug was run, was the plug bumped? (Yes/No/N/A)	Yes
If applicable, did the floats hold? (Yes/No/N/A) If applicable, did the floats hold? (Yes/No/N/A)	Yes
Mixing Density of Job Stayed in Designed Density Range (0-100%) Density Range defined as +/- .20 ppg. Calculation: Total BBLs cement mixed at designed density divided by total BBLs of cement multiplied by 100	98
Pump Rate (percent) of Job Stayed At Designed Pump Rate Pump Rate range defined as +/- 1bbl/min. Calculation: Total BBLs of fluid pumped at the designed rate divided by Total BBLs of fluid pumped, multiplied by 100	98
If applicable, were there returns throughout the job? (Yes/No/N/A) If applicable, were there returns throughout the job? (Yes/No/N/A)	YES
Nbr of Remedial Plug Jobs Rqd - HES Number Of Remedial Plug Jobs Needed After Primary Plug Pumped By HES	0
Nbr of Remedial Sqz Jobs Rqd - HES Number Of Remedial Squeeze Jobs Required After Primary Job Performed By HES	0