

OPERATOR: **WPX ENERGY**

WELL NAME: SG 412-27
FIELD NAME: SOUTH GRAND VALLEY
DRILLING RIG: H&P 318
API #: 05-045-21948

LOCATION: SEC. 27 T7S R96W
SURFACE HOLE: 2291' FSL , 496' FEL
BOTTOM HOLE: 1476' FNL , 296' FWL
SCALE: 1"=100'



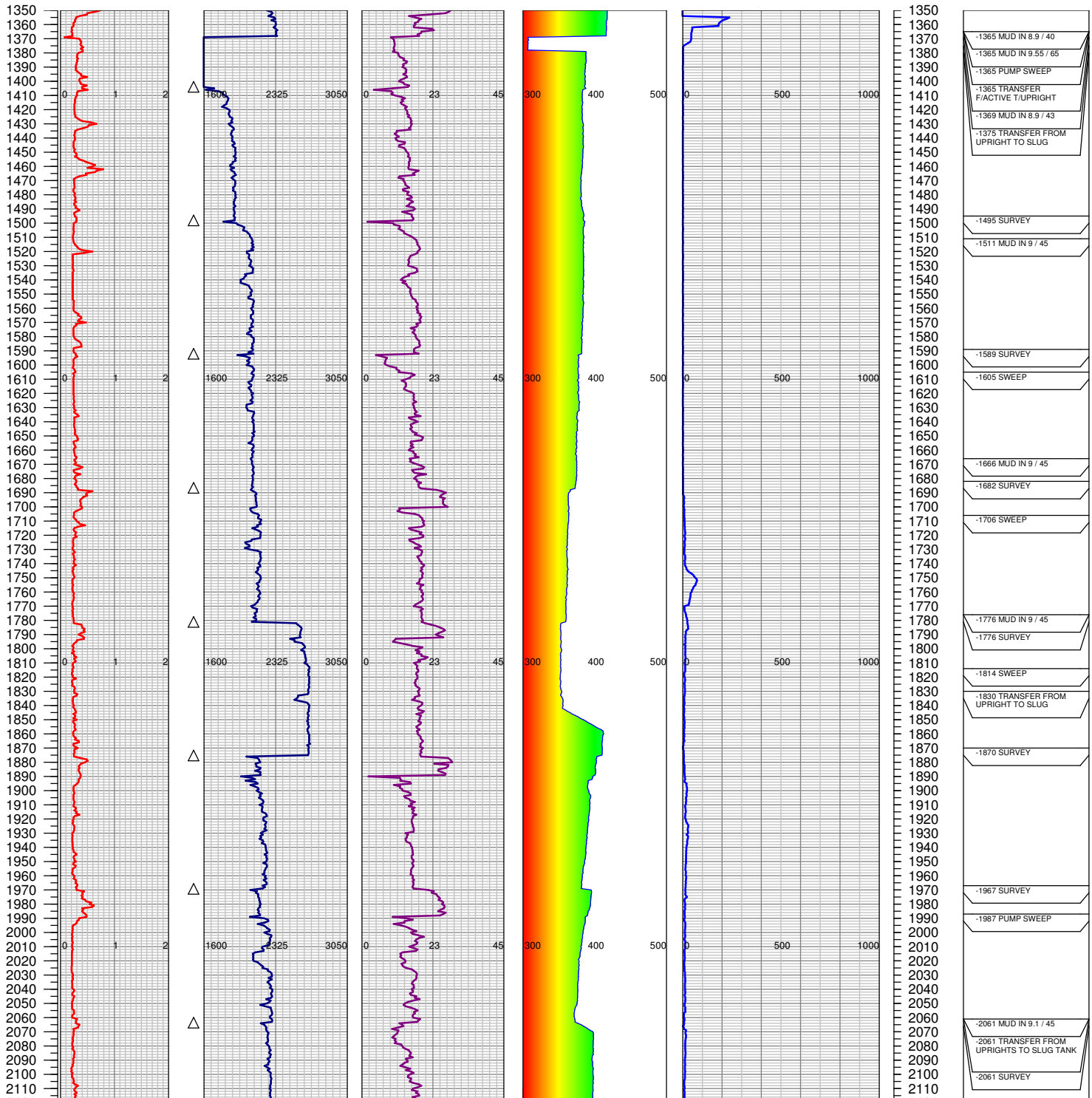
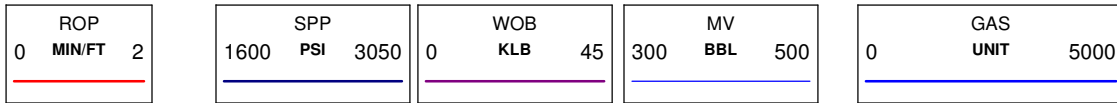
533 Bogart Lane, Unit A
Grand Junction, CO 81505
Office (970) 424-5162

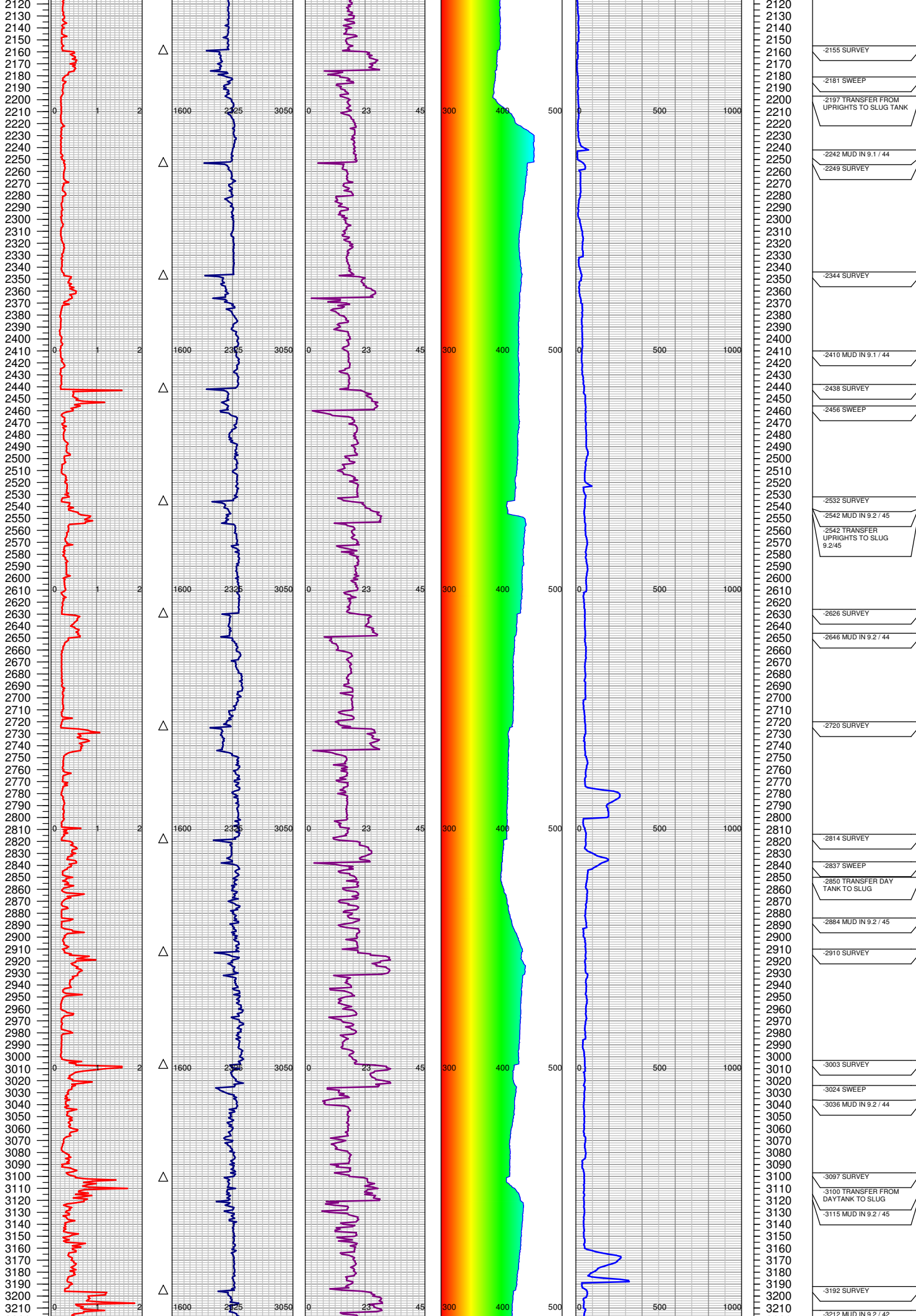
SG 412-27

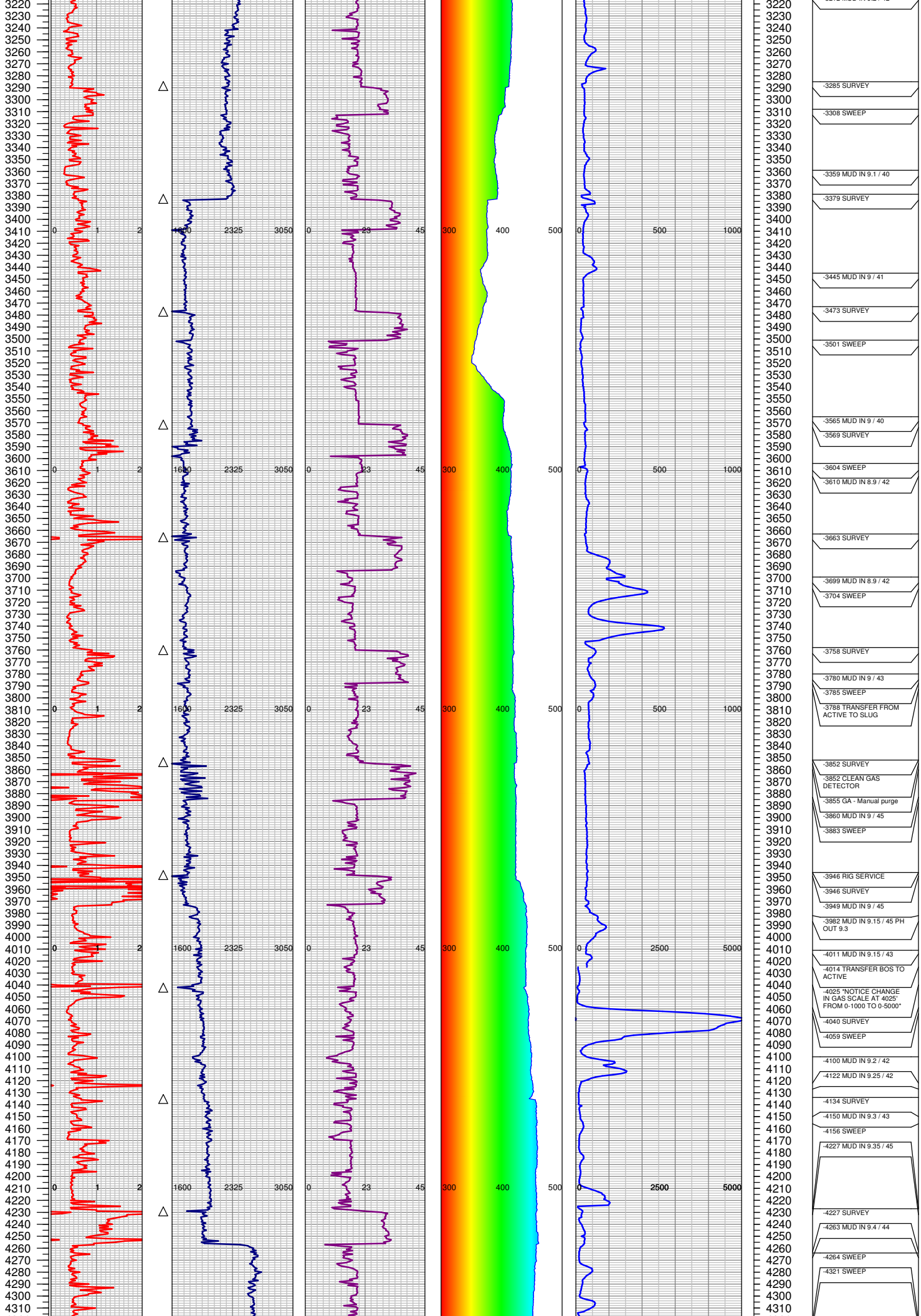
COUNTY: GARFIELD
STATE: COLORADO
DRILLING FLUID: LSND
LOGGER: LUKE DAVENPORT

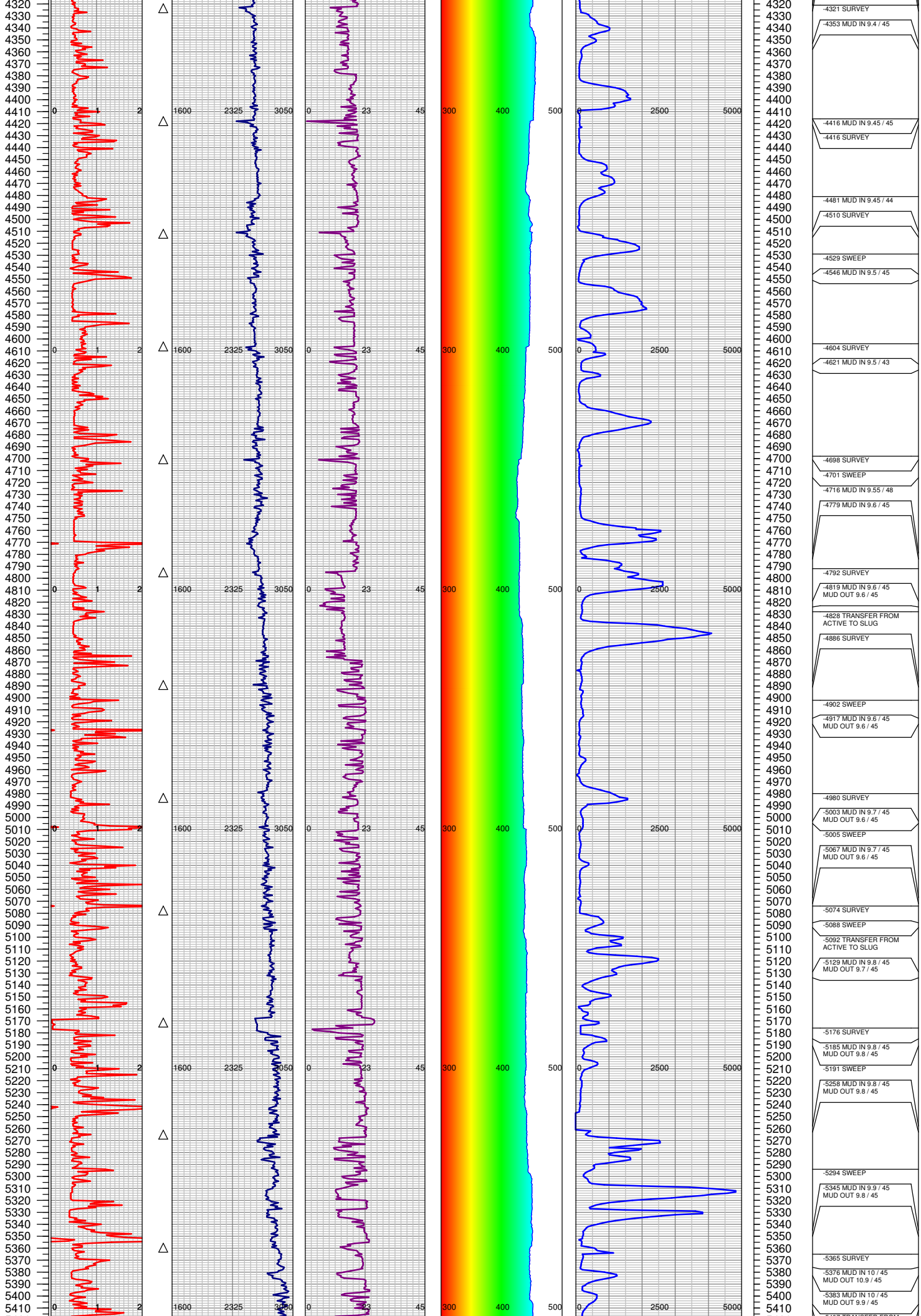
GROUND ELEVATION: 5119'
KELLY BUSHING: 5143'
TVD VS. MD = -486'
DEPTHS LOGGED: 1350'-5635'

SPUD DATE: 10/13/2014
FGS BEGIN LOGGING: 10/15/2014
TD DATE: 10/17/2014
DATES LOGGED: 10/15/2014-10/17/2014

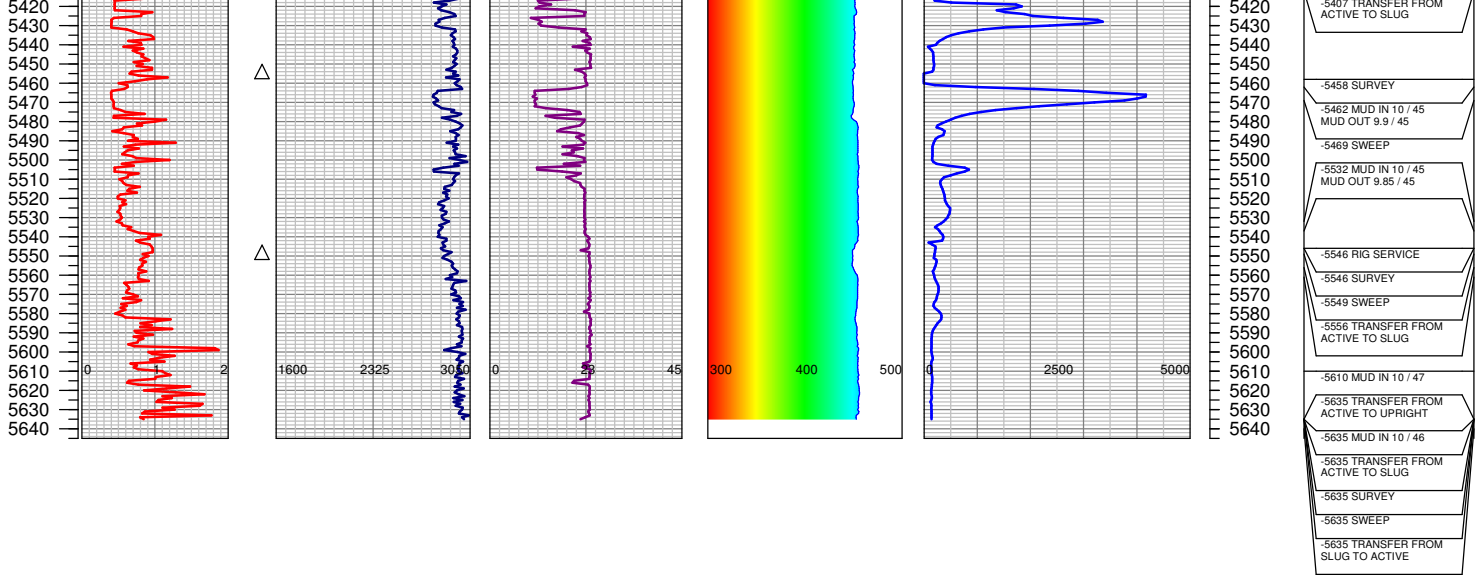








4320 SURVEY
4330
4340 -4353 MUD IN 9.4 / 45
4350
4360
4370
4380
4390
4400
4410
4420 -4416 MUD IN 9.45 / 45
4430 -4416 SURVEY
4440
4450
4460
4470
4480
4481 MUD IN 9.45 / 44
4490 -4510 SURVEY
4500
4510
4520
4530 -4529 SWEEP
4540 -4546 MUD IN 9.5 / 45
4550
4560
4570
4580
4590
4600
4604 SURVEY
4610 -4621 MUD IN 9.5 / 43
4620
4630
4640
4650
4660
4670
4680
4690
4700
4701 SURVEY
4710 -4701 SWEEP
4720 -4716 MUD IN 9.55 / 48
4730
4740 -4779 MUD IN 9.6 / 45
4750
4760
4770
4780
4790
4792 SURVEY
4800 -4819 MUD IN 9.6 / 45
4810 MUD OUT 9.6 / 45
4820
4830 -4828 TRANSFER FROM
ACTIVE TO SLUG
4840
4850 -4886 SURVEY
4860
4870
4880
4890
4900
4902 SWEEP
4910 -4917 MUD IN 9.6 / 45
4920 MUD OUT 9.6 / 45
4930
4940
4950
4960
4970
4980
4990
5000 -5003 MUD IN 9.7 / 45
5010 MUD OUT 9.6 / 45
5020 -5005 SWEEP
5030 -5067 MUD IN 9.7 / 45
5040 MUD OUT 9.6 / 45
5050
5060
5070
5080 -5074 SURVEY
5090 -5088 SWEEP
5100
5102 TRANSFER FROM
ACTIVE TO SLUG
5110
5120 -5129 MUD IN 9.8 / 45
5130 MUD OUT 9.7 / 45
5140
5150
5160
5170
5180
5190
5200
5210
5220 -5185 MUD IN 9.8 / 45
5230 MUD OUT 9.8 / 45
5240
5250
5260
5270
5280
5290
5294 SWEEP
5300
5310 -5345 MUD IN 9.9 / 45
5320 MUD OUT 9.8 / 45
5330
5340
5350
5360
5370
5380 -5365 SURVEY
5390
5400
5410



TOTAL DEPTH = 5635'

FGS RELEASED: 10/17/2014