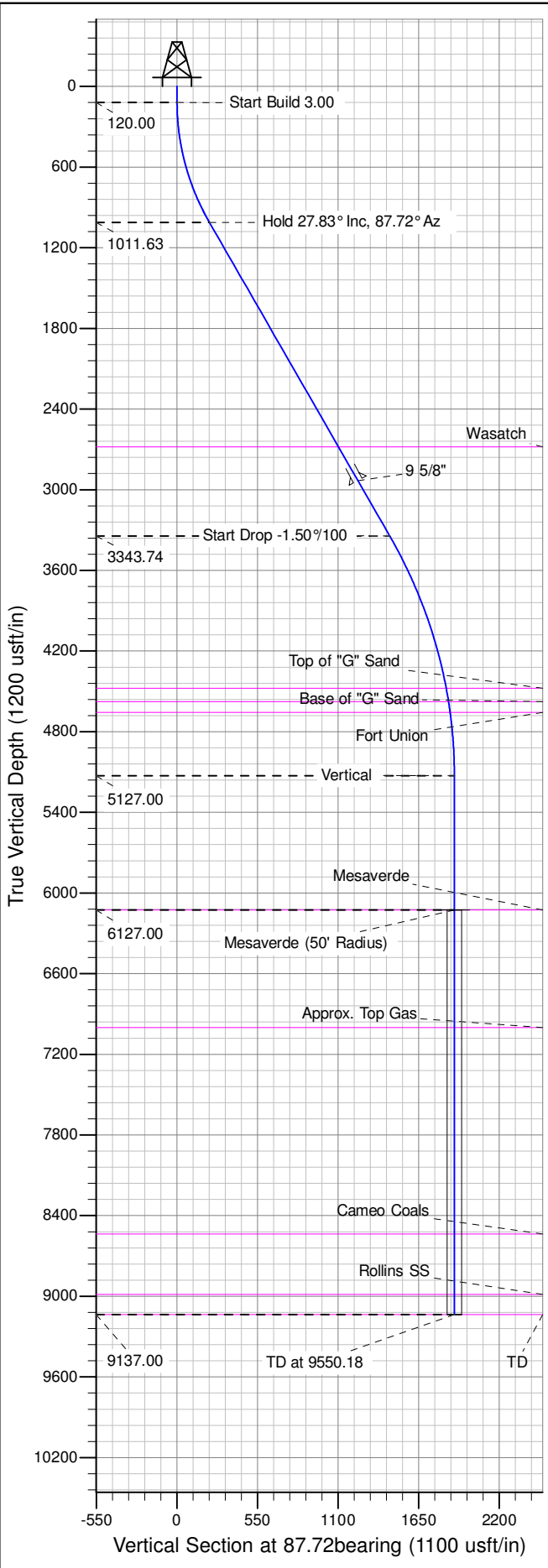
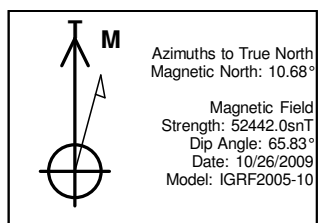
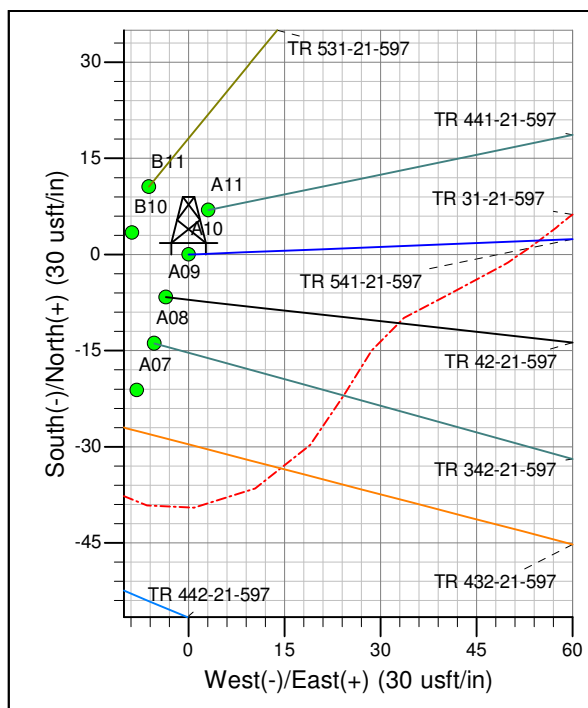
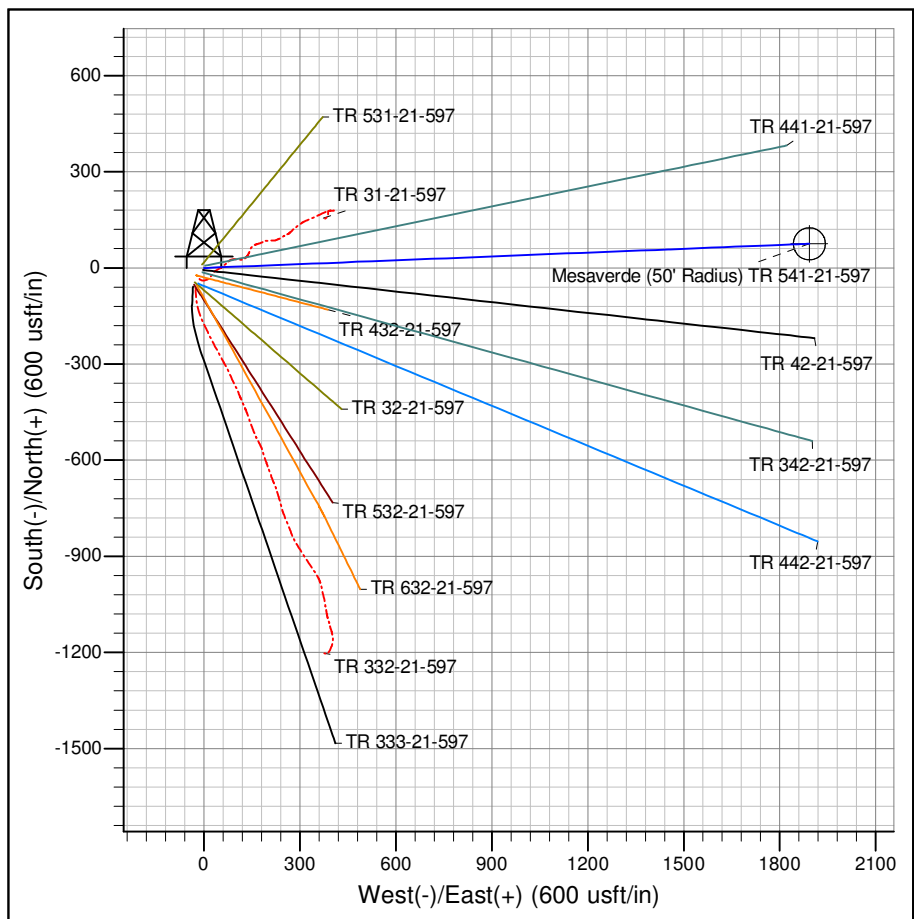




Well Name: TR 541-21-597
Surface Location: TR 32-21-597 Pad
North American Datum 1983 , US State Plane 1983 , Colorado Central Zone
Ground Elevation: 8576.00
+N/-S +E/-W Northing Easting Latitude Longitude Slot
0.00 0.00 1656440.93508 2216180.78760 39.602771 -108.282181 A10
KELLY BUSHING @ 8602.00usft (Nabors 573 (26' RKB) mab)



ANNOTATIONS									
TVD	MD	Inc	Azi	+N/-S	+E/-W	Vsect	Departure	Annotation	
120.00	120.00	0.00	0.00	0.00	0.00	0.00	0.00	Start Build 3.00	Start Build 3.00
1011.63	1047.68	27.83	87.72	8.78	220.73	220.91	220.91	Hold 27.83° Inc, 87.72° Az	Hold 27.83° Inc, 87.72° Az
3343.74	3684.82	27.83	87.72	57.69	1450.93	1452.07	1452.07	Start Drop -1.50%/100	Start Drop -1.50%/100
5127.00	5540.18	0.00	0.00	75.25	1892.40	1893.89	1893.89	Vertical	Vertical
6127.00	6540.18	0.00	0.00	75.25	1892.40	1893.89	1893.89	Mesaverde	Mesaverde
9137.00	9550.18	0.00	0.00	75.25	1892.40	1893.89	1893.89	TD at 9550.18	TD at 9550.18



Azimuths to True North
Magnetic North: 10.68°

Magnetic Field
Strength: 52442.0snT
Dip Angle: 65.83°
Date: 10/26/2009
Model: IGRF2005-10

Project: TR 21-05S-097W
Site: TR 32-21-597 Pad
Well: TR 541-21-597
Plan #3 29Jul14 mab