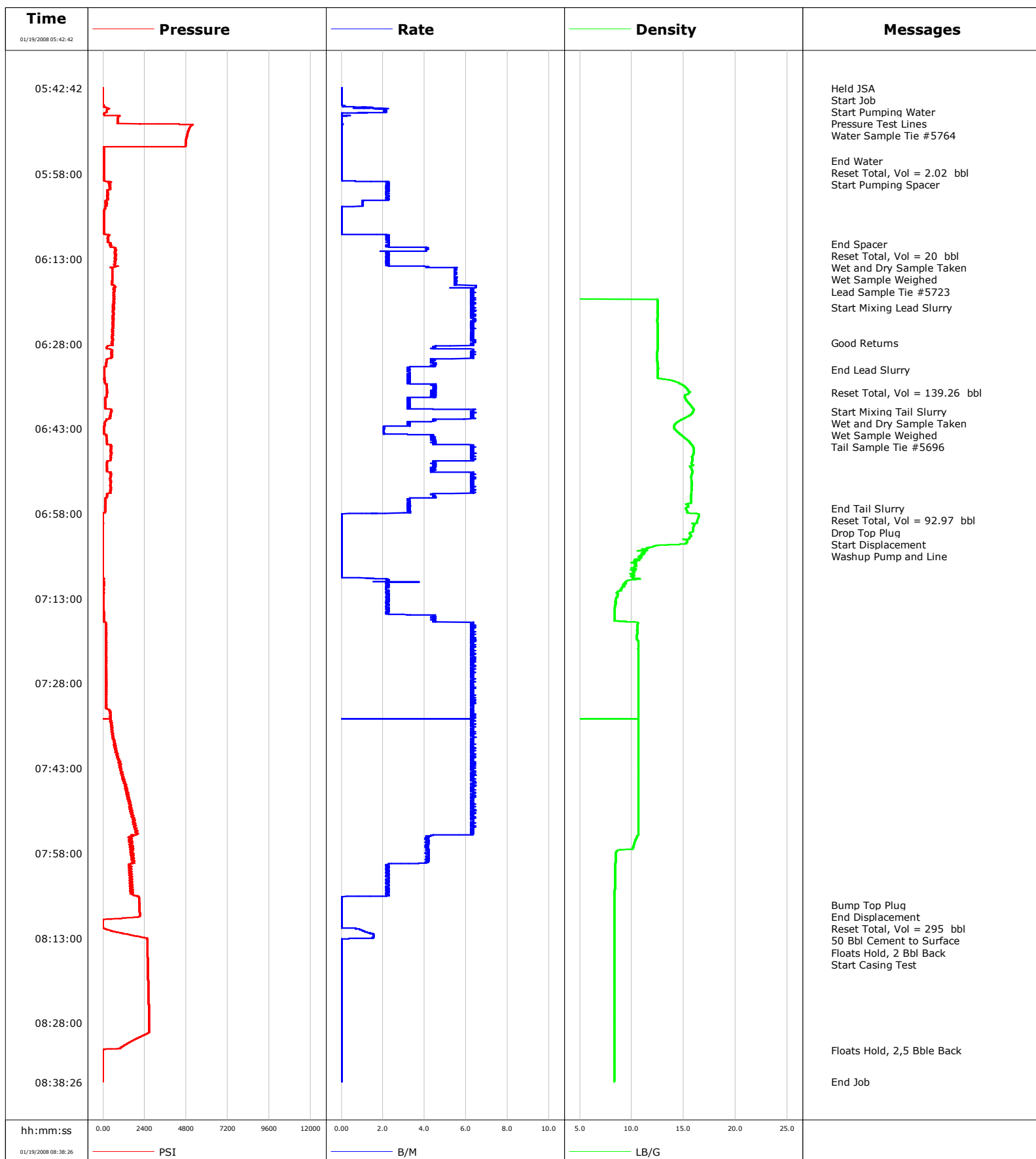


Well Windsor LV B-14H
Field Wattenberg
Engineer Ryan Drilling
Country United States

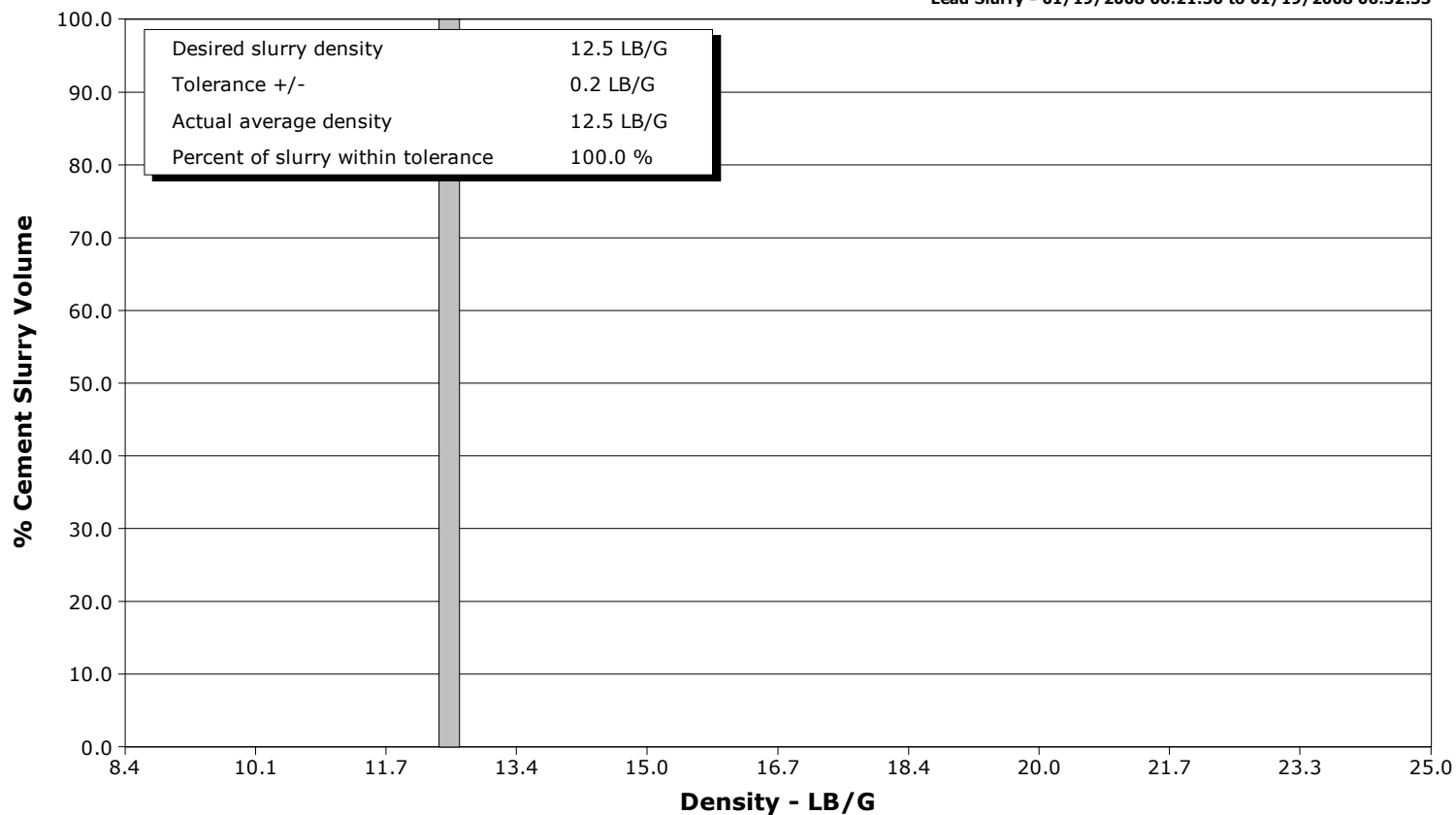
Client Extraction
SIR No. D2IK-00582
Job Type 7" Intermediate
Job Date 12-18-2014



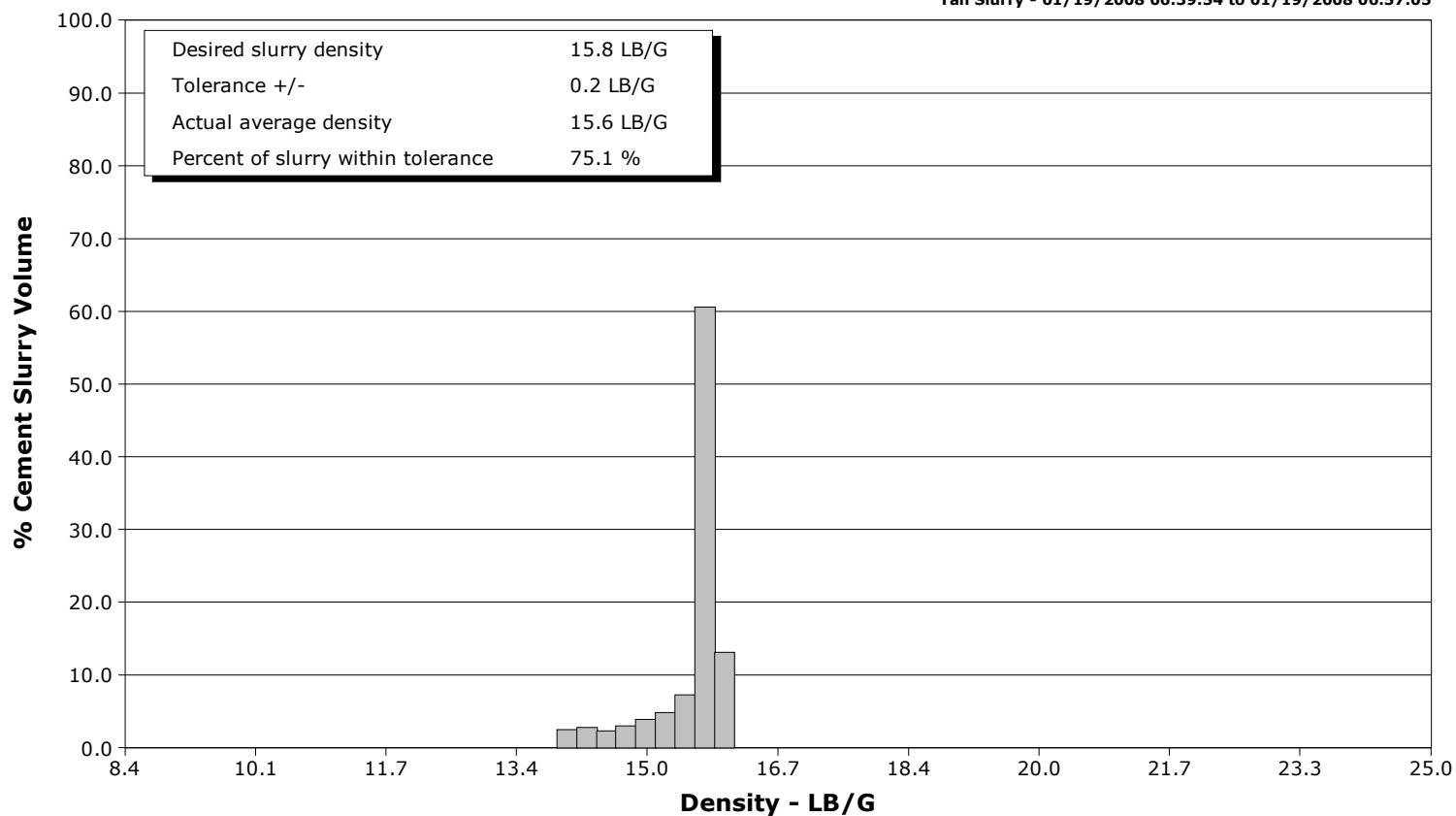
Well Windsor LV B-14H
Field Wattenberg
Engineer Ryan Drilling
Country United States

Client Extraction
SIR No. D2IK-00582
Job Type 7" Intermediate
Job Date 12-18-2014

Lead Slurry - 01/19/2008 06:21:30 to 01/19/2008 06:32:33



Tail Slurry - 01/19/2008 06:39:54 to 01/19/2008 06:57:05



Page 1 of 5

Well			Field		Job Start	Customer	Job Number
Windsor LV B-14H B-14H			Wattenberg		Dec/18/2014	Extraction	D2IK-00582
Date	Time 24-hr clock	Treating Pressure PSI	Flow Rate B/M	Density LB/G	Volume BBL	Solid Fraction NULL	Message
01/19/2008	05:57:42	37	0.0	0.00	2.0	0	
01/19/2008	05:58:42	38	0.0	0.00	2.0	0	
01/19/2008	05:59:05	43	0.0	0.00	2.0	0	Start Pumping Spacer
01/19/2008	05:59:42	402	2.3	0.00	3.0	16	
01/19/2008	06:00:42	395	2.2	0.00	5.2	19	
01/19/2008	06:01:42	259	2.2	0.00	7.4	23	
01/19/2008	06:02:42	126	1.0	0.00	9.5	14	
01/19/2008	06:03:42	101	0.8	0.00	10.5	14	
01/19/2008	06:04:42	53	0.0	0.00	10.6	0	
01/19/2008	06:05:42	50	0.0	0.00	10.6	0	
01/19/2008	06:06:42	50	0.0	0.00	10.6	0	
01/19/2008	06:07:42	50	0.0	0.00	10.6	0	
01/19/2008	06:08:42	278	2.2	0.00	10.7	4	
01/19/2008	06:09:42	302	2.3	0.00	12.9	10	
01/19/2008	06:10:22	422	2.3	0.00	14.4	14	End Spacer
01/19/2008	06:10:24	433	2.3	0.00	14.5	15	Reset Total, Vol = 20 bbl
01/19/2008	06:10:42	467	2.2	0.00	15.1	16	
01/19/2008	06:11:35	686	4.1	0.00	18.3	20	Wet and Dry Sample Taken
01/19/2008	06:11:36	767	4.1	0.00	18.4	20	Wet Sample Weighed
01/19/2008	06:11:38	698	4.1	0.00	18.5	20	Lead Sample Tie #5723
01/19/2008	06:11:42	643	2.3	0.00	18.7	20	
01/19/2008	06:12:42	722	2.3	0.00	20.9	24	
01/19/2008	06:13:42	700	2.3	0.00	23.1	26	
01/19/2008	06:14:42	551	5.4	0.00	26.3	28	
01/19/2008	06:15:42	530	5.6	0.00	31.8	30	
01/19/2008	06:16:42	535	5.4	0.00	37.3	30	
01/19/2008	06:17:42	614	6.5	0.00	42.8	29	
01/19/2008	06:18:42	645	6.2	0.00	49.1	28	
01/19/2008	06:19:42	609	6.2	0.00	55.4	28	
01/19/2008	06:20:42	595	6.4	12.49	61.7	28	
01/19/2008	06:21:30	601	6.4	12.50	66.8	28	Start Mixing Lead Slurry
01/19/2008	06:21:42	645	6.4	12.50	68.0	28	
01/19/2008	06:22:42	606	6.2	12.49	74.3	28	
01/19/2008	06:23:42	602	6.4	12.47	80.7	29	
01/19/2008	06:24:42	580	6.2	12.48	87.0	29	
01/19/2008	06:25:42	542	6.4	12.49	93.3	29	
01/19/2008	06:26:42	506	6.2	12.49	99.6	29	
01/19/2008	06:27:42	523	6.4	12.50	105.9	28	
01/19/2008	06:27:45	531	6.4	12.50	106.2	28	Good Returns
01/19/2008	06:28:42	193	4.4	12.51	111.6	28	
01/19/2008	06:29:42	472	6.4	12.43	117.5	28	
01/19/2008	06:30:42	223	4.3	12.42	123.6	28	
01/19/2008	06:31:42	167	4.5	12.48	128.1	29	
01/19/2008	06:32:33	69	3.2	12.50	131.2	15	End Lead Slurry
01/19/2008	06:32:42	77	3.2	12.50	131.7	15	
01/19/2008	06:33:42	73	3.2	12.50	134.9	11	
01/19/2008	06:34:42	99	3.2	14.22	138.2	29	
01/19/2008	06:35:42	215	4.5	15.20	142.2	36	
01/19/2008	06:36:34	237	4.5	15.54	146.1	35	Reset Total, Vol = 139.26 bbl
01/19/2008	06:36:42	228	4.4	15.50	146.7	35	
01/19/2008	06:37:42	123	3.2	15.17	150.9	34	
01/19/2008	06:38:42	124	3.3	15.60	154.1	37	
01/19/2008	06:39:42	451	6.4	15.98	157.9	40	
01/19/2008	06:39:54	504	6.4	15.93	159.2	40	Start Mixing Tail Slurry

Well			Field		Job Start	Customer	Job Number
Windsor LV B-14H B-14H			Wattenberg		Dec/18/2014	Extraction	D2IK-00582
Date	Time 24-hr clock	Treating Pressure PSI	Flow Rate B/M	Density LB/G	Volume BBL	Solid Fraction NULL	Message
01/19/2008	06:40:09	461	6.4	15.85	160.7	40	Tail Sample Tie #5696
01/19/2008	06:40:42	387	6.4	15.54	164.2	39	
01/19/2008	06:41:42	166	4.4	14.51	169.8	34	
01/19/2008	06:42:42	42	2.0	14.07	172.9	33	
01/19/2008	06:43:42	47	2.0	14.52	174.9	35	
01/19/2008	06:44:42	190	4.4	15.15	178.6	37	
01/19/2008	06:45:42	218	4.4	15.72	183.1	40	
01/19/2008	06:46:42	476	6.4	15.99	189.2	41	
01/19/2008	06:47:42	432	6.2	15.89	195.5	42	
01/19/2008	06:48:42	232	4.6	15.82	201.8	41	
01/19/2008	06:49:42	224	4.4	15.64	206.2	38	
01/19/2008	06:50:42	440	6.4	15.83	210.7	39	
01/19/2008	06:51:42	392	6.2	15.72	217.0	39	
01/19/2008	06:52:42	410	6.4	15.78	223.3	40	
01/19/2008	06:53:42	472	6.4	15.77	229.7	40	
01/19/2008	06:54:42	235	4.4	15.71	235.4	40	
01/19/2008	06:55:42	147	3.2	15.69	239.4	40	
01/19/2008	06:56:42	127	3.3	15.41	242.6	24	
01/19/2008	06:57:05	120	3.2	15.22	243.8	45	End Tail Slurry
01/19/2008	06:57:42	127	3.3	15.37	245.8	67	
01/19/2008	06:58:22	-9	0.0	16.45	246.7	0	Reset Total, Vol = 92.97 bbl
01/19/2008	06:58:42	-9	0.0	16.42	246.7	0	
01/19/2008	06:58:44	-9	0.0	16.41	246.7	0	Drop Top Plug
01/19/2008	06:58:45	-9	0.0	16.40	246.7	0	Washup Pump and Line
01/19/2008	06:59:42	-3	0.0	16.25	246.7	0	
01/19/2008	07:00:42	-5	0.0	15.92	246.7	0	
01/19/2008	07:01:42	-11	0.0	15.63	246.7	0	
01/19/2008	07:02:42	-10	0.0	15.27	246.7	0	
01/19/2008	07:03:42	-11	0.0	12.24	246.7	0	
01/19/2008	07:04:42	-10	0.0	11.23	246.7	0	
01/19/2008	07:05:42	-11	0.0	10.89	246.7	0	
01/19/2008	07:06:42	-11	0.0	9.92	246.7	0	
01/19/2008	07:07:42	-17	0.0	10.22	246.7	0	
01/19/2008	07:08:42	-12	0.0	9.96	246.7	0	
01/19/2008	07:09:42	24	2.3	10.04	247.3	45	
01/19/2008	07:10:42	30	2.2	9.19	249.5	45	
01/19/2008	07:11:42	25	2.3	8.84	251.7	20	
01/19/2008	07:12:42	23	2.2	8.57	254.0	9	
01/19/2008	07:13:42	10	2.2	8.43	256.2	5	
01/19/2008	07:14:42	22	2.2	8.36	258.4	3	
01/19/2008	07:15:42	31	2.2	8.34	260.6	16	
01/19/2008	07:16:42	49	4.4	8.34	264.6	51	
01/19/2008	07:17:42	167	6.4	10.56	270.1	0	
01/19/2008	07:18:42	163	6.2	10.53	276.4	0	
01/19/2008	07:19:42	159	6.2	10.51	282.7	0	
01/19/2008	07:20:42	174	6.4	10.64	289.0	0	
01/19/2008	07:21:42	183	6.2	10.62	295.3	0	
01/19/2008	07:22:42	178	6.5	10.63	301.6	0	
01/19/2008	07:23:42	169	6.4	10.63	307.9	0	
01/19/2008	07:24:42	167	6.2	10.63	314.2	0	
01/19/2008	07:25:42	164	6.2	10.64	320.6	0	
01/19/2008	07:26:42	181	6.4	10.64	326.9	0	
01/19/2008	07:27:42	179	6.4	10.64	333.2	0	
01/19/2008	07:28:42	161	6.2	10.64	339.5	0	

Well Windsor LV B-14H B-14H			Field Wattenberg		Job Start Dec/18/2014	Customer Extraction	Job Number D2IK-00582
Date	Time 24-hr clock	Treating Pressure PSI	Flow Rate B/M	Density LB/G	Volume BBL	Solid Fraction NULL	Message
01/19/2008	07:30:42	166	6.2	10.65	352.1	0	
01/19/2008	07:31:42	187	6.4	10.65	358.4	0	
01/19/2008	07:32:42	377	6.4	10.65	364.7	0	
01/19/2008	07:33:42	467	6.2	10.65	371.0	0	
01/19/2008	07:34:42	428	6.4	10.65	377.3	0	
01/19/2008	07:35:42	469	6.4	10.65	383.6	0	
01/19/2008	07:36:42	533	6.2	10.65	390.0	0	
01/19/2008	07:37:42	596	6.4	10.66	396.3	0	
01/19/2008	07:38:42	698	6.4	10.65	402.6	0	
01/19/2008	07:39:42	671	6.2	10.65	408.9	0	
01/19/2008	07:40:42	767	6.4	10.65	415.2	0	
01/19/2008	07:41:42	938	6.4	10.65	421.5	0	
01/19/2008	07:42:42	1035	6.2	10.65	427.8	0	
01/19/2008	07:43:42	1117	6.4	10.65	434.1	0	
01/19/2008	07:44:42	1093	6.4	10.65	440.5	0	
01/19/2008	07:45:42	1239	6.4	10.65	446.8	0	
01/19/2008	07:46:42	1371	6.4	10.65	453.1	0	
01/19/2008	07:47:42	1447	6.2	10.64	459.4	0	
01/19/2008	07:48:42	1550	6.4	10.65	465.7	0	
01/19/2008	07:49:42	1536	6.4	10.64	472.0	0	
01/19/2008	07:50:42	1640	6.2	10.64	478.4	0	
01/19/2008	07:51:42	1727	6.4	10.64	484.7	0	
01/19/2008	07:52:42	1844	6.2	10.64	491.0	0	
01/19/2008	07:53:42	1934	6.2	10.64	497.3	0	
01/19/2008	07:54:42	1920	6.2	10.64	503.6	0	
01/19/2008	07:55:42	1615	4.1	10.36	508.0	0	
01/19/2008	07:56:42	1686	4.1	10.18	512.1	0	
01/19/2008	07:57:42	1603	4.2	8.55	516.2	0	
01/19/2008	07:58:42	1643	4.1	8.44	520.4	0	
01/19/2008	07:59:42	1742	4.0	8.43	524.6	0	
01/19/2008	08:00:42	1584	2.2	8.42	527.0	0	
01/19/2008	08:01:42	1573	2.3	8.42	529.3	0	
01/19/2008	08:02:42	1657	2.2	8.41	531.5	0	
01/19/2008	08:03:42	1544	2.3	8.41	533.7	0	
01/19/2008	08:04:42	1585	2.3	8.32	535.9	0	
01/19/2008	08:05:42	2050	0.0	8.31	538.0	0	
01/19/2008	08:06:42	2085	0.0	8.31	538.0	0	
01/19/2008	08:07:10	2094	0.0	8.32	538.0	0	Bump Top Plug
01/19/2008	08:07:11	2094	0.0	8.31	538.0	0	End Displacement
01/19/2008	08:07:12	2095	0.0	8.31	538.0	0	Reset Total, Vol = 295 bbl
01/19/2008	08:07:13	2094	0.0	8.32	538.0	0	50 Bbl Cement to Surface
01/19/2008	08:07:42	2102	0.0	8.31	538.0	0	
01/19/2008	08:08:42	2117	0.0	8.31	538.0	0	
01/19/2008	08:09:42	203	0.0	8.31	538.0	0	
01/19/2008	08:10:41	-24	0.0	8.31	538.0	0	Floats Hold, 2 Bbl Back
01/19/2008	08:10:42	-24	0.0	8.31	538.0	0	
01/19/2008	08:11:42	437	1.0	8.32	538.4	0	
01/19/2008	08:12:42	1974	1.5	8.32	539.8	0	
01/19/2008	08:13:12	2547	0.0	8.32	540.4	0	Start Casing Test
01/19/2008	08:13:42	2549	0.0	8.32	540.4	0	
01/19/2008	08:14:42	2557	0.0	8.32	540.4	0	
01/19/2008	08:15:42	2565	0.0	8.32	540.4	0	
01/19/2008	08:16:42	2574	0.0	8.32	540.4	0	
01/19/2008	08:17:42	2581	0.0	8.31	540.4	0	

Well Windsor LV B-14H B-14H			Field Wattenberg		Job Start Dec/18/2014	Customer Extraction		Job Number D2IK-00582
Date	Time 24-hr clock	Treating Pressure PSI	Flow Rate B/M	Density LB/G	Volume BBL	Solid Fraction NULL	Message	
01/19/2008	08:19:42	2594	0.0	8.31	540.4	0		
01/19/2008	08:20:42	2602	0.0	8.31	540.4	0		
01/19/2008	08:21:42	2609	0.0	8.31	540.4	0		
01/19/2008	08:22:42	2614	0.0	8.31	540.4	0		
01/19/2008	08:23:42	2621	0.0	8.31	540.4	0		
01/19/2008	08:24:42	2628	0.0	8.32	540.4	0		
01/19/2008	08:25:42	2634	0.0	8.31	540.4	0		
01/19/2008	08:26:42	2640	0.0	8.31	540.4	0		
01/19/2008	08:27:42	2648	0.0	8.31	540.4	0		
01/19/2008	08:28:42	2652	0.0	8.32	540.4	0		
01/19/2008	08:29:42	2658	0.0	8.31	540.4	0		
01/19/2008	08:30:42	1994	0.0	8.32	540.4	0		
01/19/2008	08:31:42	1390	0.0	8.32	540.4	0		
01/19/2008	08:32:42	67	0.0	8.32	540.4	0		
01/19/2008	08:32:52	-25	0.0	8.32	540.4	0	Floats Hold, 2,5 Bble Back	
01/19/2008	08:33:42	-23	0.0	8.31	540.4	0		
01/19/2008	08:34:42	-23	0.0	8.32	540.4	0		
01/19/2008	08:35:42	-22	0.0	8.32	540.4	0		
01/19/2008	08:36:42	-21	0.0	8.31	540.4	0		
01/19/2008	08:37:42	-22	0.0	8.31	540.4	0		

Post Job Summary

Average Pump Rates, bbl/min					Volume of Fluid Injected, bbl							
Slurry 4.7	N2	Mud	Maximum Rate 6.5		Total Slurry 232.0	Mud 0.0	Spacer 20.0	N2				
Treating Pressure Summary, psi					Breakdown Fluid							
Maximum 5207	Final -22	Average 941	Bump Plug to	Breakdown	Type	Volume bbl		Density lb/gal				
Avg. N2 Percent %	Designed Slurry Volume 236.4 bbl	Displacement 295.0 bbl	Mix Water Temp 65 degF	Cement Circulated to Surface? <input checked="" type="checkbox"/>		Volume 50.0 bbl						
				Washed Thru Perfs <input type="checkbox"/>		To ft						
Customer or Authorized Representative Sean McIntyre			Schlumberger Supervisor Ryan Drilling			Circulation Lost <input type="checkbox"/>	Job Completed <input checked="" type="checkbox"/>					
						-	-					