

1801 Broadway  
Suite 500  
Denver, Colorado 80202



Callie Fiddes  
Regulatory Technician  
Tel: 303.398.0550  
E-mail: cfiddes@gwogco.com

November 20, 2014

Colorado Oil and Gas Conservation Commission  
1120 Lincoln Street, Suite 801  
Denver, Colorado 80203

RE: **Proposed Wellbore Spacing Unit**  
DeTienne FD 10-322HC

Codell New Drill  
Township 6 North, Range 67 West, 6<sup>th</sup> P.M.  
Section 10  
Weld County, Colorado

Dear Director:

Great Western Operating Company, LLC is planning to drill the above captioned well in accordance with the provisions of COGCC Rule 318A.e.

Great Western proposed wellbore spacing unit consists of:

- **S2 Sec 10**
- **320 acres**

The 30 day notification time period has passed and we have not received any objections to such well locations or proposed spacing unit, therefore Great Western hereby requests the Director to approve the above mentioned well. Great Western Operating Company, LLC respectfully requests that the COGCC review the enclosed map illustrating the proposed wellbore spacing unit.

Respectfully,

*Callie Fiddes*

Callie Fiddes  
Regulatory Technician  
Great Western Operating Company, LLC

# LEGEND:

- = 90° SYMBOL
- = PROPOSED WELLHEAD.
- = TARGET BOTTOM HOLE.
- ◆ = ENTRY POINT
- ▲ = SECTION CORNERS LOCATED.

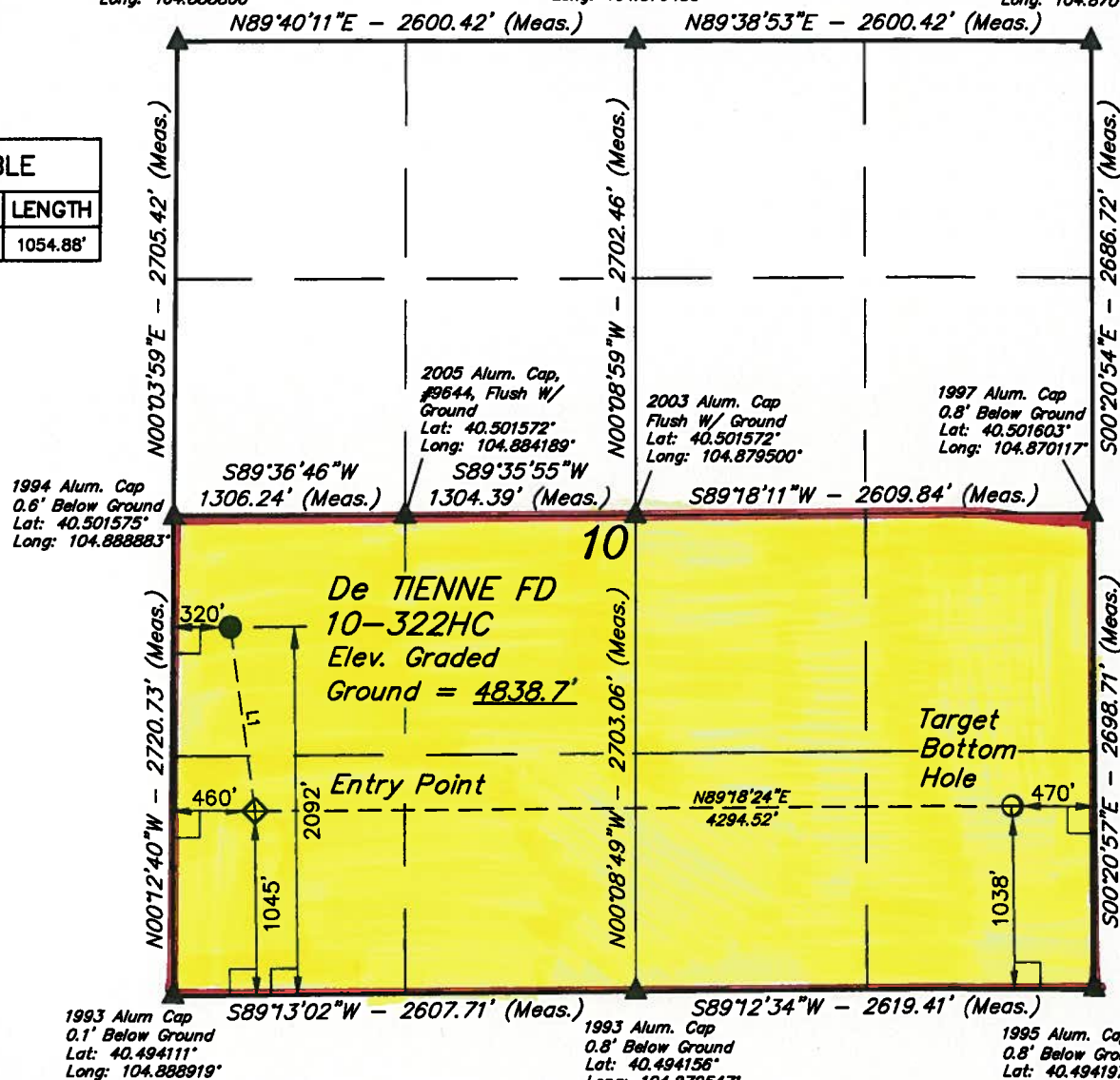
T6N, R67W, 6th P.M.

1994 Alum. Cap  
0.6' Below Ground  
Lat: 40.509000°  
Long: 104.888800°

1997 Alum. Cap  
0.5' Below Ground  
Lat: 40.508986°  
Long: 104.879450°

2000 Alum. Cap  
0.5' Below Ground  
Lat: 40.508975°  
Long: 104.870100°

LINE TABLE		
LINE	DIRECTION	LENGTH
L1	S07°50'09"E	1054.88'



PDOP = 1.4

## NAD 83 (TARGET BOTTOM HOLE)

LATITUDE = 40°29'49.34" (40.497039)  
LONGITUDE = 104°52'18.54" (104.871817)

## NAD 27 (TARGET BOTTOM HOLE)

LATITUDE = 40°29'49.41" (40.497058)  
LONGITUDE = 104°52'16.64" (104.871289)

## NAD 83 (ENTRY POINT)

LATITUDE = 40°29'49.15" (40.496986)  
LONGITUDE = 104°53'14.11" (104.887253)

## NAD 27 (ENTRY POINT)

LATITUDE = 40°29'49.22" (40.497006)  
LONGITUDE = 104°53'12.21" (104.886725)

## NAD 83 (SURFACE LOCATION)

LATITUDE = 40°29'59.48" (40.499856)  
LONGITUDE = 104°53'15.87" (104.887742)

## NAD 27 (SURFACE LOCATION)

LATITUDE = 40°29'59.55" (40.499875)  
LONGITUDE = 104°53'13.97" (104.887214)

## BASIS OF BEARINGS

BASIS OF BEARINGS IS A GPS OBSERVATION

## BASIS OF ELEVATION

USGS COOPERATIVE BASE NETWORK CONTROL STATION,  
DESIGNATION "VERMILYEA". NGS DATA SHEET LISTS THE  
NAVD 88 ELEVATION AS BEING 5026 FEET.



**UELS, LLC**  
Corporate Office \* 85 South 200 East  
Vernal, UT 84078 \* (435) 789-1017

CERTIFICATE  
THIS IS TO CERTIFY THAT THE ABOVE PLAT WAS PREPARED FROM FIELD  
NOTES OF ACTUAL SURVEYS MADE BY ME OR UNDER MY SUPERVISION  
AND THAT THE SAME ARE TRUE AND CORRECT TO THE BEST OF MY  
KNOWLEDGE AND BELIEF.

REGISTERED LAND SURVEYOR  
REGISTRATION NO. 28285  
STATE OF COLORADO

## GREAT WESTERN OIL & GAS COMPANY

De TIENNE FD 10-322HC  
NW 1/4 SW 1/4, SECTION 10, T6N, R67W, 6th P.M.  
WELD COUNTY, COLORADO

SURVEYED BY: DALAS NEILSEN	DATE: 10-17-14
DRAWN BY: J.W.	DATE DRAWN: 05-22-14
SCALE: 1" = 1000'	REVISED: 10-18-14

## WELL LOCATION PLAT