

# LEGEND:

- = 90° SYMBOL
- = PROPOSED WELLHEAD.
- = TARGET BOTTOM HOLE.
- ◆ = ENTRY POINT
- ▲ = SECTION CORNERS LOCATED.

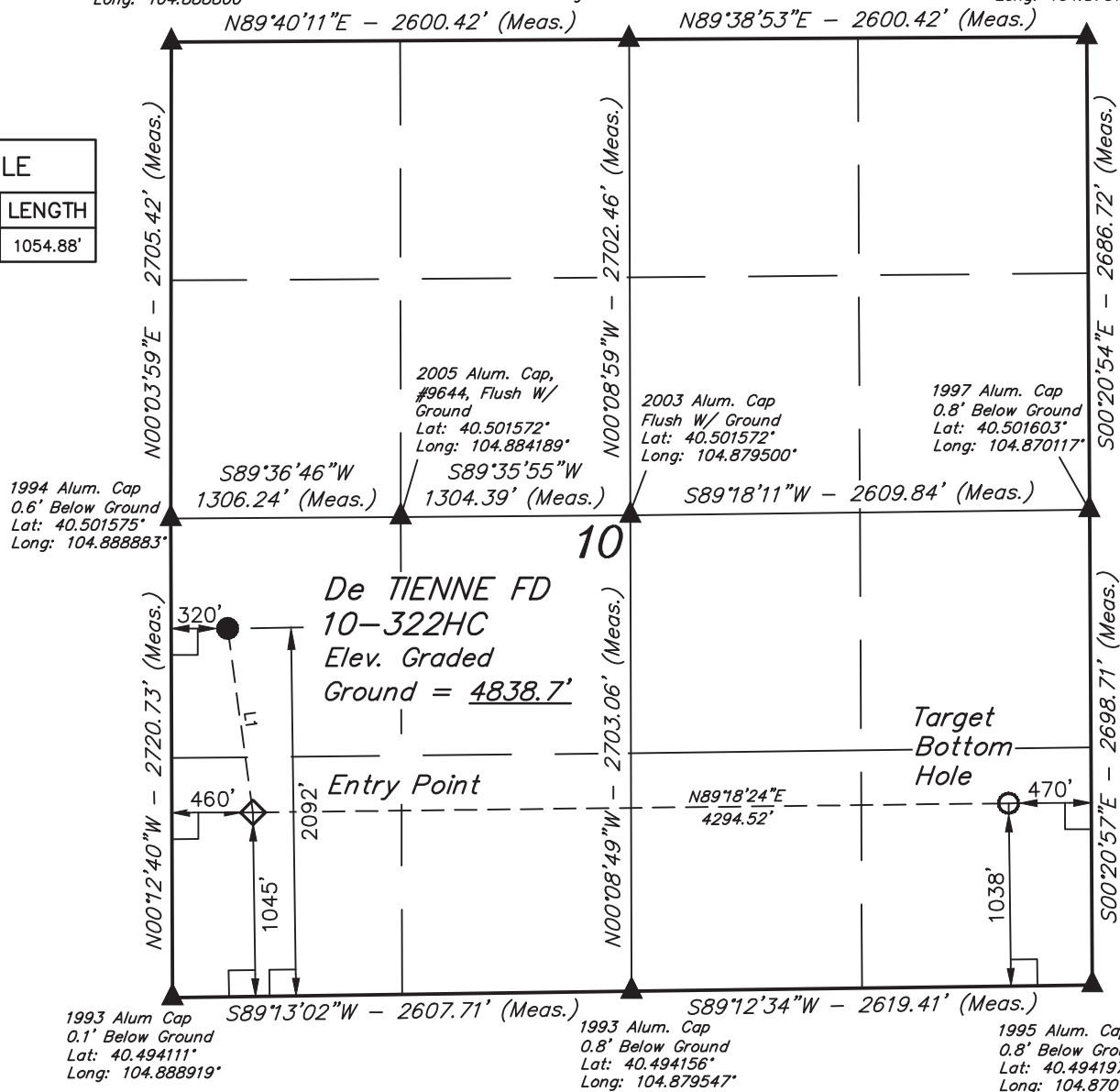
T6N, R67W, 6th P.M.

1994 Alum. Cap  
0.6' Below Ground  
Lat: 40.509000°  
Long: 104.888800°

1997 Alum. Cap  
0.5' Below Ground  
Lat: 40.508986°  
Long: 104.879450°

2000 Alum. Cap  
0.5' Below Ground  
Lat: 40.508975°  
Long: 104.870100°

LINE TABLE		
LINE	DIRECTION	LENGTH
L1	S07°50'09"E	1054.88'



PDOP = 1.4

<b>NAD 83 (TARGET BOTTOM HOLE)</b>
LATITUDE = 40°29'49.34" (40.497039)
LONGITUDE = 104°52'18.54" (104.871817)
<b>NAD 27 (TARGET BOTTOM HOLE)</b>
LATITUDE = 40°29'49.41" (40.497058)
LONGITUDE = 104°52'16.64" (104.871289)

<b>NAD 83 (ENTRY POINT)</b>	<b>NAD 83 (SURFACE LOCATION)</b>
LATITUDE = 40°29'49.15" (40.496986)	LATITUDE = 40°29'59.48" (40.499856)
LONGITUDE = 104°53'14.11" (104.887253)	LONGITUDE = 104°53'15.87" (104.887742)
<b>NAD 27 (ENTRY POINT)</b>	<b>NAD 27 (SURFACE LOCATION)</b>
LATITUDE = 40°29'49.22" (40.497006)	LATITUDE = 40°29'59.55" (40.499875)
LONGITUDE = 104°53'12.21" (104.886725)	LONGITUDE = 104°53'13.97" (104.887214)

**BASIS OF BEARINGS**  
BASIS OF BEARINGS IS A G.P.S. OBSERVATION  
**BASIS OF ELEVATION**

USGS COOPERATIVE BASE NETWORK CONTROL STATION,  
DESIGNATION "VERMILYEA". NGS DATA SHEET LISTS THE  
NAVD 88 ELEVATION AS BEING 5026 FEET.



**UELS, LLC**  
Corporate Office \* 85 South 200 East  
Vernal, UT 84078 \* (435) 789-1017



**CERTIFICATE**  
THIS IS TO CERTIFY THAT THE ABOVE PLAT WAS PREPARED FROM FIELD  
NOTES OF ACTUAL SURVEYS MADE BY ME OR UNDER MY SUPERVISION  
AND THAT THE SAME ARE TRUE AND CORRECT TO THE BEST OF MY  
KNOWLEDGE AND BELIEF.  
*[Signature]*  
REGISTERED LAND SURVEYOR  
REGISTRATION NO. 28285  
STATE OF COLORADO  
10-17-14

**GREAT WESTERN OIL & GAS COMPANY**

**De TIENNE FD 10-322HC**  
**NW 1/4 SW 1/4, SECTION 10, T6N, R67W, 6th P.M.**  
**WELD COUNTY, COLORADO**

SURVEYED BY: DALAS NEILSEN	DATE: 10-17-14
DRAWN BY: J.W.	DATE DRAWN: 05-22-14
SCALE: 1" = 1000'	REVISED: 10-18-14

**WELL LOCATION PLAT**