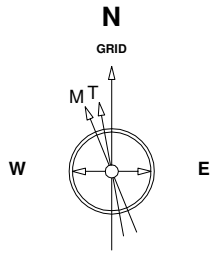


Great Western Operating Company, LLC

Location Colorado
Field Wattenberg
Installation DeTienne 10

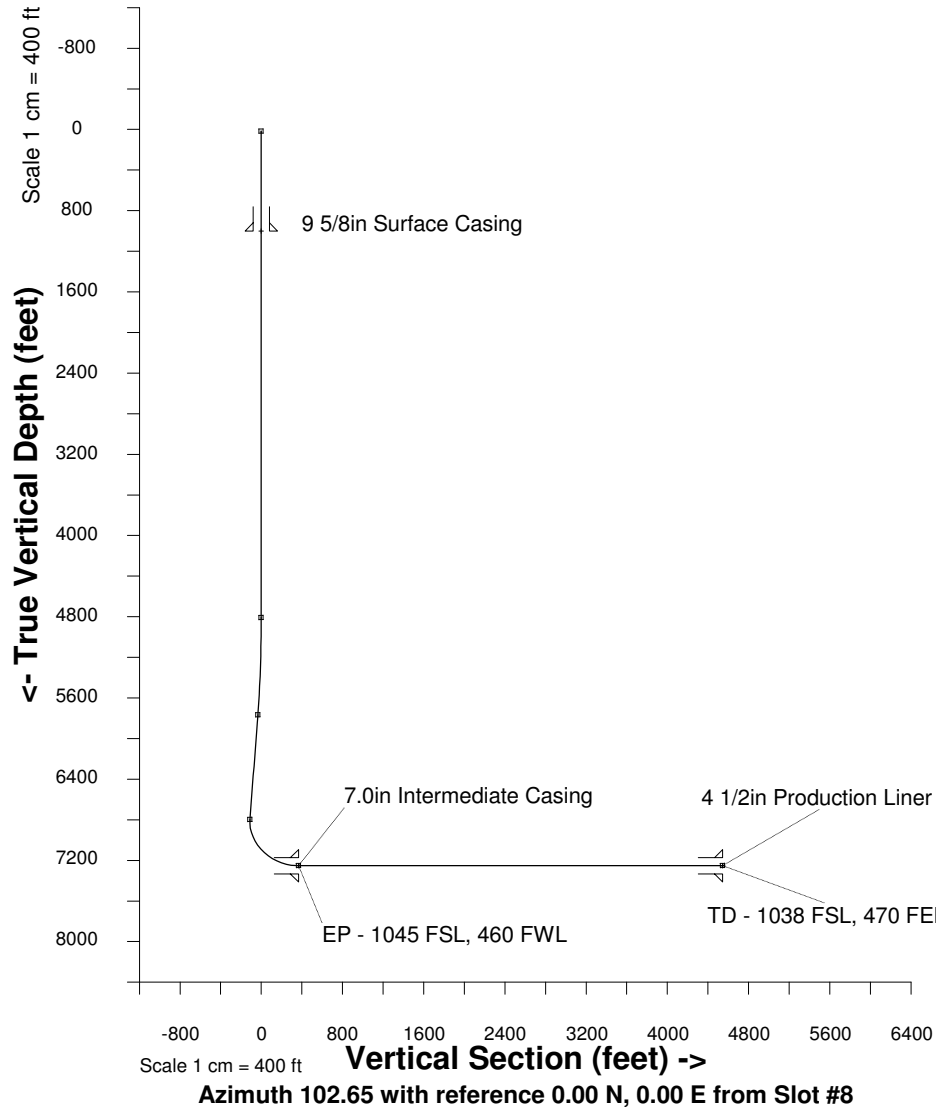
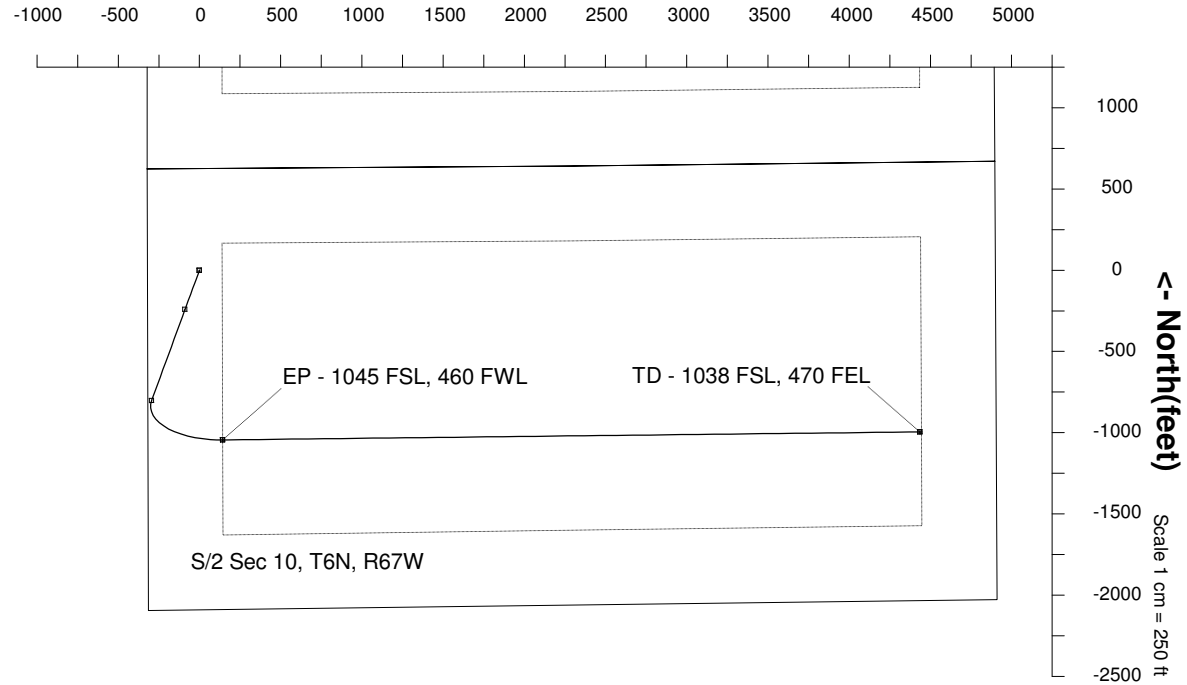
Slot Slot #8
Well DeTienne FD 10-322HC
Wellbore DeTienne FD 10-322HC (PWB)



12-Nov-2014
IGRF Model [1900.0-2015.0] Dip: -29.76 deg Field: 32232.1 nT
Magnetic North is 4.43 deg West of True North
GRID North is 0.40 deg East of True North
To correct azimuth from True to GRID subtract 0.40 deg
To correct azimuth from Magnetic to GRID subtract 4.83 deg

Scale 1 cm = 250 ft

East (feet) ->



WELL PROFILE DATA

Point	MD	Inc	Azi	TVD	North	East	deg/100ft	V. Sect
Tie on	16.20	0.00	0.00	16.20	0.00	0.00	0.00	0.00
KOP	4810.00	0.00	0.00	4810.00	0.00	0.00	0.00	0.00
End of Build	5813.95	30.12	200.14	5768.35	-242.09	-88.77	3.00	-33.61
End of Hold	7002.63	30.12	200.14	6796.55	-802.09	-294.12	0.00	-111.36
Target EP - 1045 FSL	7773.88	90.00	89.34	7253.00	-1044.63	142.38	13.00	367.66
T.D. & Target TD - 1038	12067.01	90.00	89.34	7253.00	-995.29	4435.23	0.00	4545.53

Created by admin
Date plotted 12-Nov-2014
Plot reference is DeTienne FD 10-322HC (PWB).
Ref wellpath is DeTienne FD 10-322HC (PWP#1).
Coordinates are in feet reference Slot #8.
True Vertical Depths are reference Rig Datum.
Measured Depths are reference Rig Datum.
Rig Datum: Planned Datum #1
Rig Datum to Mean Sea Level: 4854.80 ft.
Plot North is aligned to GRID North.