

1801 Broadway
Suite 500
Denver, Colorado 80202



Callie Fiddes
Regulatory Technician
Tel: 303.398.0550
E-mail: cfiddes@gwogco.com

November 20, 2014

Colorado Oil and Gas Conservation Commission
1120 Lincoln Street, Suite 801
Denver, Colorado 80203

RE: **Proposed Wellbore Spacing Unit**
DeTienne FD 10-239HC

Codell New Drill
Township 6 North, Range 67 West, 6th P.M.
Section 10
Weld County, Colorado

Dear Director:

Great Western Operating Company, LLC is planning to drill the above captioned well in accordance with the provisions of COGCC Rule 318A.e.

Great Western proposed wellbore spacing unit consists of:

- **S2/N2, N2/S2 Sec 10**
- **320 acres**

The 30 day notification time period has passed and we have not received any objections to such well locations or proposed spacing unit, therefore Great Western hereby requests the Director to approve the above mentioned well. Great Western Operating Company, LLC respectfully requests that the COGCC review the enclosed map illustrating the proposed wellbore spacing unit.

Respectfully,

Callie Fiddes

Callie Fiddes
Regulatory Technician
Great Western Operating Company, LLC

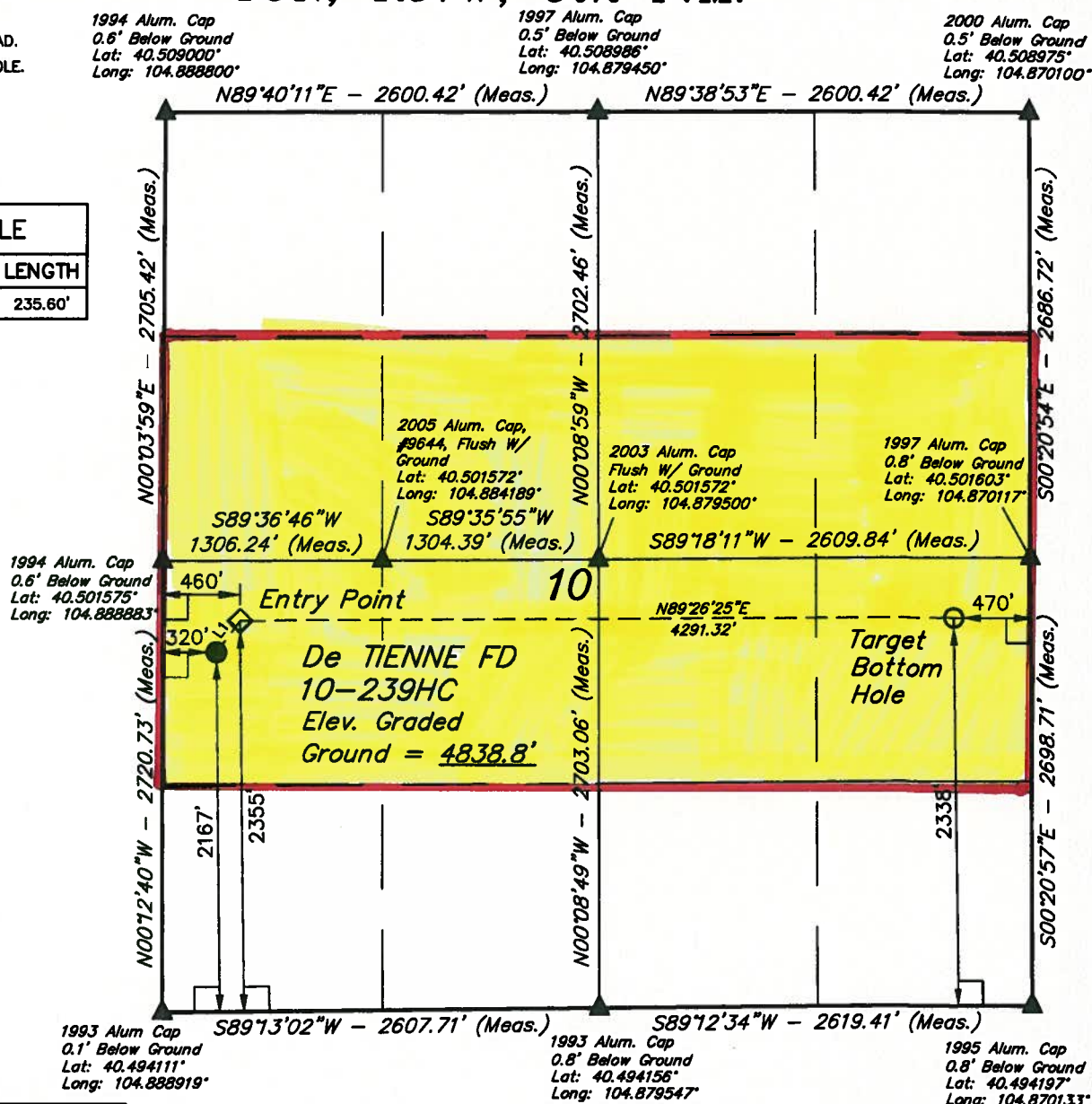
LEGEND:

- = 90° SYMBOL
- = PROPOSED WELLHEAD.
- = TARGET BOTTOM HOLE.
- ◆ = ENTRY POINT
- ▲ = SECTION CORNERS LOCATED.

LINE TABLE

LINE	DIRECTION	LENGTH
L1	N36°13'59"E	235.60'

T6N, R67W, 6th P.M.



PDOP = 1.6

NAD 83 (TARGET BOTTOM HOLE)

LATITUDE = 40°30'02.18" (40.500606)
LONGITUDE = 104°52'18.51" (104.871808)

NAD 27 (TARGET BOTTOM HOLE)

LATITUDE = 40°30'02.25" (40.500625)
LONGITUDE = 104°52'16.61" (104.871281)

NAD 83 (ENTRY POINT)

LATITUDE = 40°30'02.09" (40.500581)
LONGITUDE = 104°53'14.04" (104.887233)

NAD 27 (ENTRY POINT)

LATITUDE = 40°30'02.16" (40.500600)
LONGITUDE = 104°53'12.14" (104.886706)

NAD 83 (SURFACE LOCATION)

LATITUDE = 40°30'00.22" (40.500061)
LONGITUDE = 104°53'15.86" (104.887739)

NAD 27 (SURFACE LOCATION)

LATITUDE = 40°30'00.29" (40.500081)
LONGITUDE = 104°53'13.96" (104.887211)

BASIS OF BEARINGS

BASIS OF BEARINGS IS A G.P.S. OBSERVATION

BASIS OF ELEVATION

USGS COOPERATIVE BASE NETWORK CONTROL STATION,
DESIGNATION "VERMILYEA". NGS DATA SHEET LISTS THE
NAVD 88 ELEVATION AS BEING 5026 FEET.



CERTIFICATE
THIS IS TO CERTIFY THAT THE ABOVE PLAT WAS PREPARED FROM FIELD
NOTES OF ACTUAL SURVEYS MADE BY ME OR UNDER MY SUPERVISION
AND THAT THE SAME ARE TRUE AND CORRECT TO THE BEST OF MY
KNOWLEDGE AND BELIEF.

REGISTERED LAND SURVEYOR
REGISTRATION NO 28285
STATE OF COLORADO

GREAT WESTERN OIL & GAS COMPANY

De TIENNE FD 10-239HC
NW 1/4 SW 1/4, SECTION 10, T6N, R67W, 6th P.M.
WELD COUNTY, COLORADO

SURVEYED BY: DALAS NEILSEN	DATE: 10-17-14
DRAWN BY: J.W.	DATE DRAWN: 05-22-14
SCALE: 1" = 1000'	REVISED: 10-18-14

WELL LOCATION PLAT



UELS, LLC
Corporate Office * 85 South 200 East
Vernal, UT 84078 * (435) 789-1017