



RADIAL CEMENT BOND
GAMMA RAY
CCL

Company KERR McGEE OIL AND GAS
Well RASMUSSEN 23-29
Field WATTENBERG
County WELD State CO

Location: API # : 05-123-30874
SHL: 712' FSL & 1962' FEL SW/SE
SEC 29 TWP 2N RGE 68W
Permanent Datum GL Elevation 4935'
Log Measured From KB 15'
Drilling Measured From KB
Other Services
K.B. 4950'
D.F. 4949'
G.L. 4935'

Company KERR McGEE OIL AND GAS
Well RASMUSSEN 23-29
Field WATTENBERG
County WELD
State CO

Date 12-15-2014
Run Number ONE
Depth Driller 7870'
Depth Logger 1794'
Bottom Logged Interval 1785'
Top Log Interval SURFACE
Open Hole Size 7.875
Type Fluid WATER
Density / Viscosity 1.0
Max. Recorded Temp. 78 DEG F
Estimated Cement Top 459'
Time Well Ready N/A
Time Logger on Bottom N/A
Equipment Number 4310
Location GREELEY
Recorded By N. BREHMER
Witnessed By J. CHANDLER

Borehole Record			Tubing Record				
Run Number	Bit	From	To	Size	Weight	From	To
ONE	12.25"	SURFACE	870'				
TWO	7.88"	870'	7870'				

Casing Record	Size	Wgt/Ft	Top	Bottom
Surface String	8.63	24#	SURFACE	859'
Prot. String				
Production String	4.5	11.6#	SURFACE	7857'
Liner				

<<< Fold Here >>>

All interpretations are opinions based on inferences from electrical or other measurements and we cannot and do not guarantee the accuracy or correctness of any interpretation, and we shall not, except in the case of gross or willful negligence on our part, be liable or responsible for any loss, costs, damages, or expenses incurred or sustained by anyone resulting from any interpretation made by any of our officers, agents or employees. These interpretations are also subject to our general terms and conditions set out in our current Price Schedule.

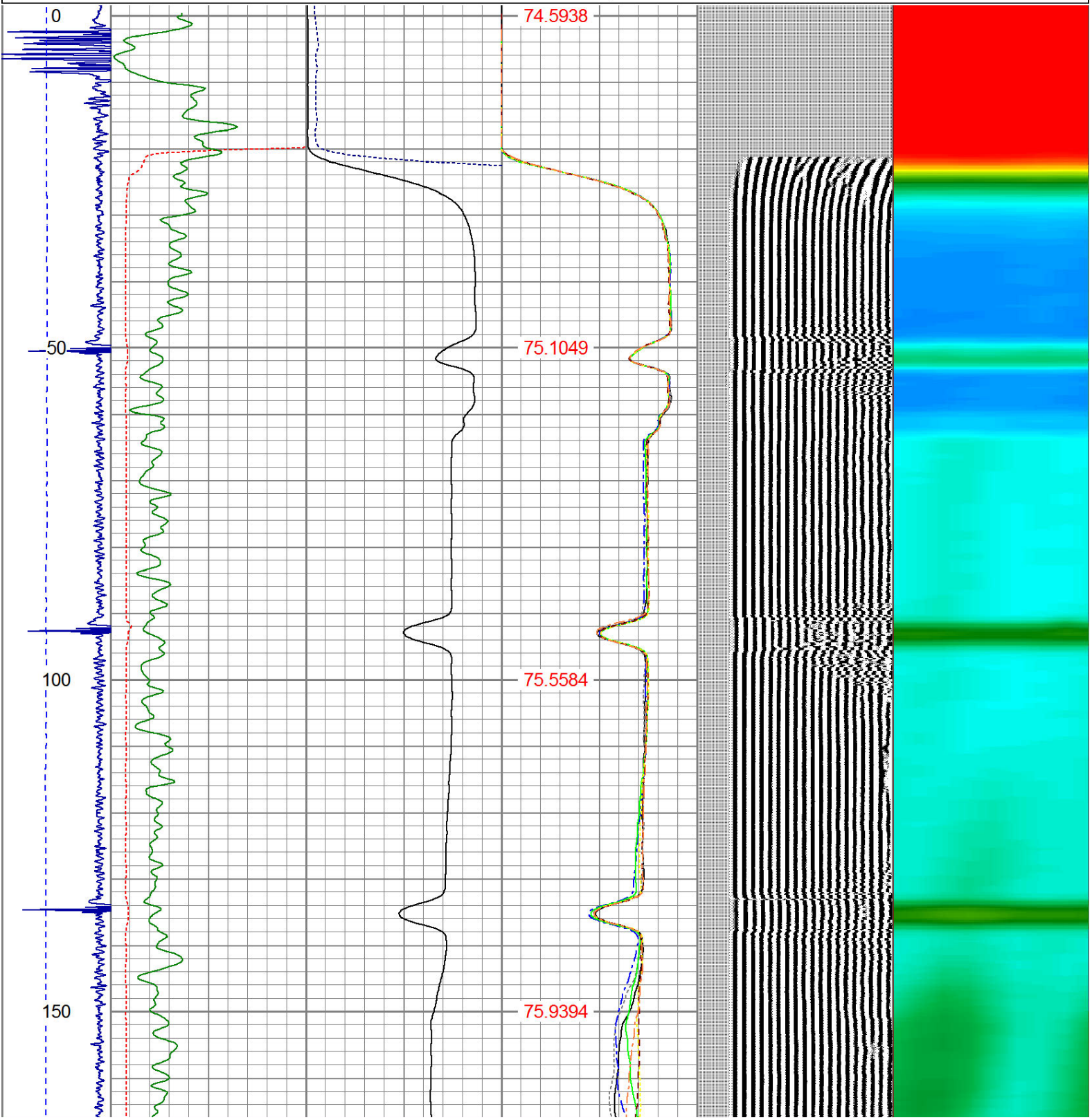
Comments

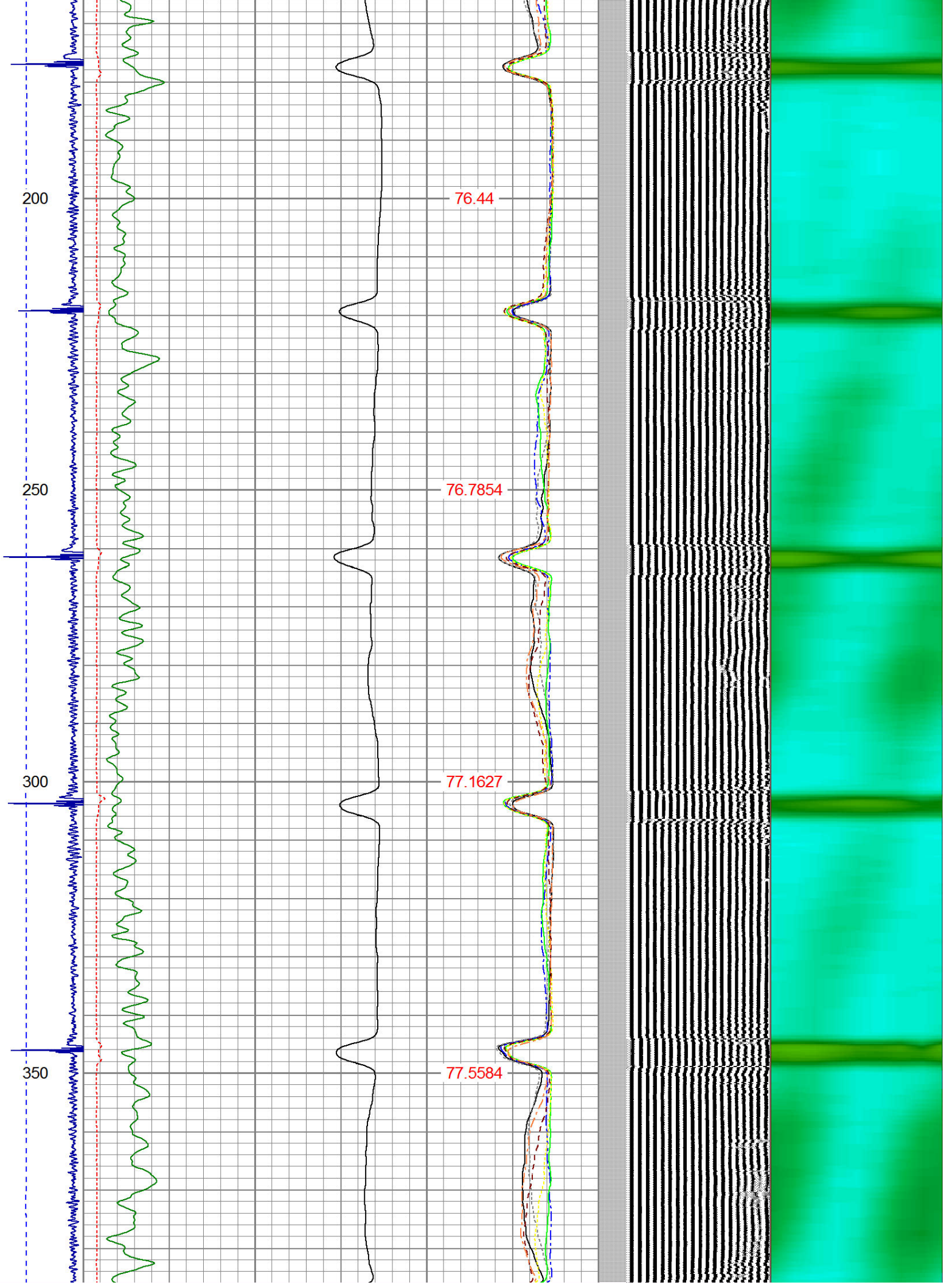
RAN CBL TO VERIFY CEMENT BOND
THANK YOU FOR USING WARRIOR !!!!!!!

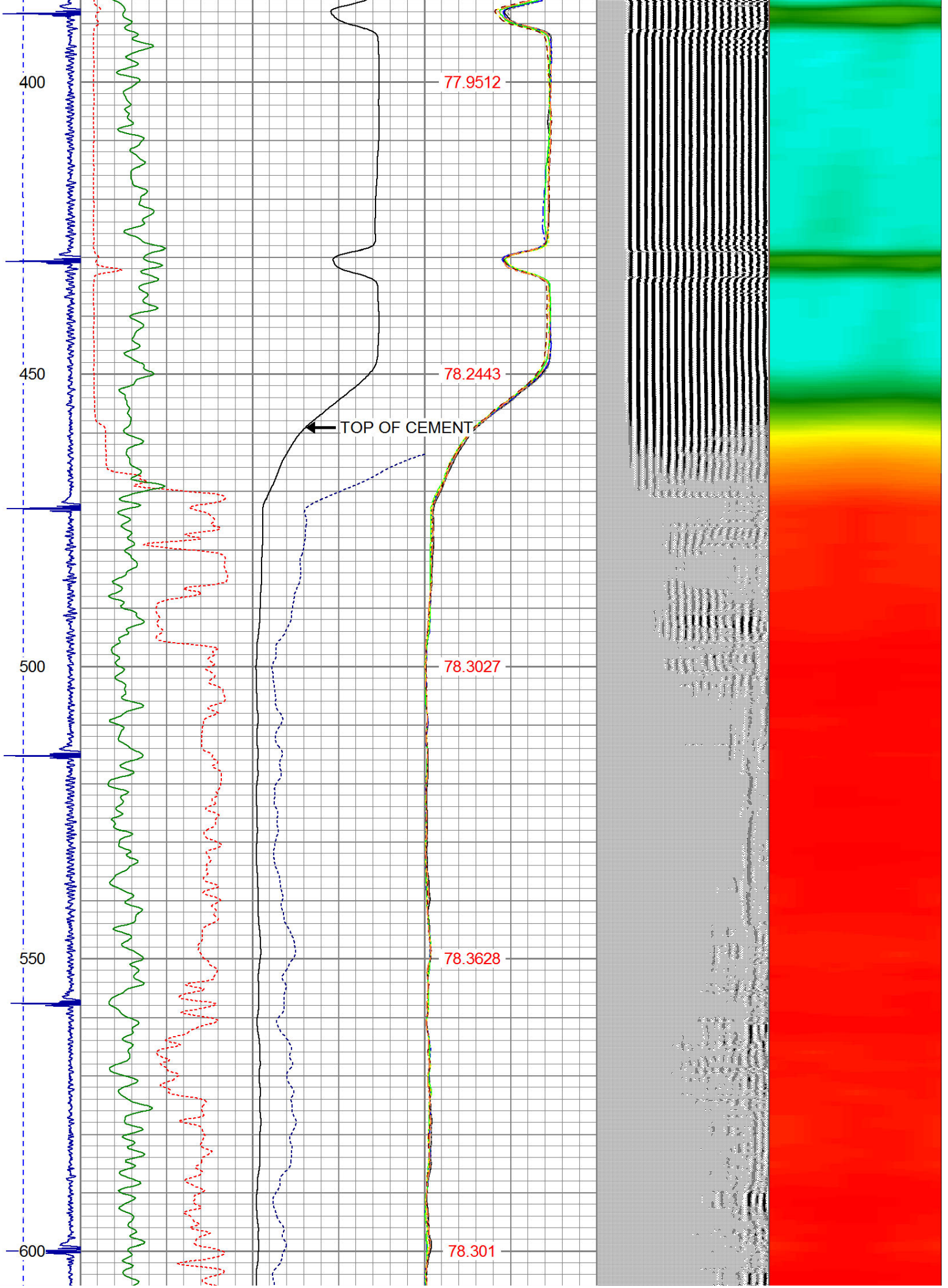
Sensor	Offset (ft)	Schematic	Description	Len (ft)	OD (in)	Wt (lb)
				1.00	1.36	5.00

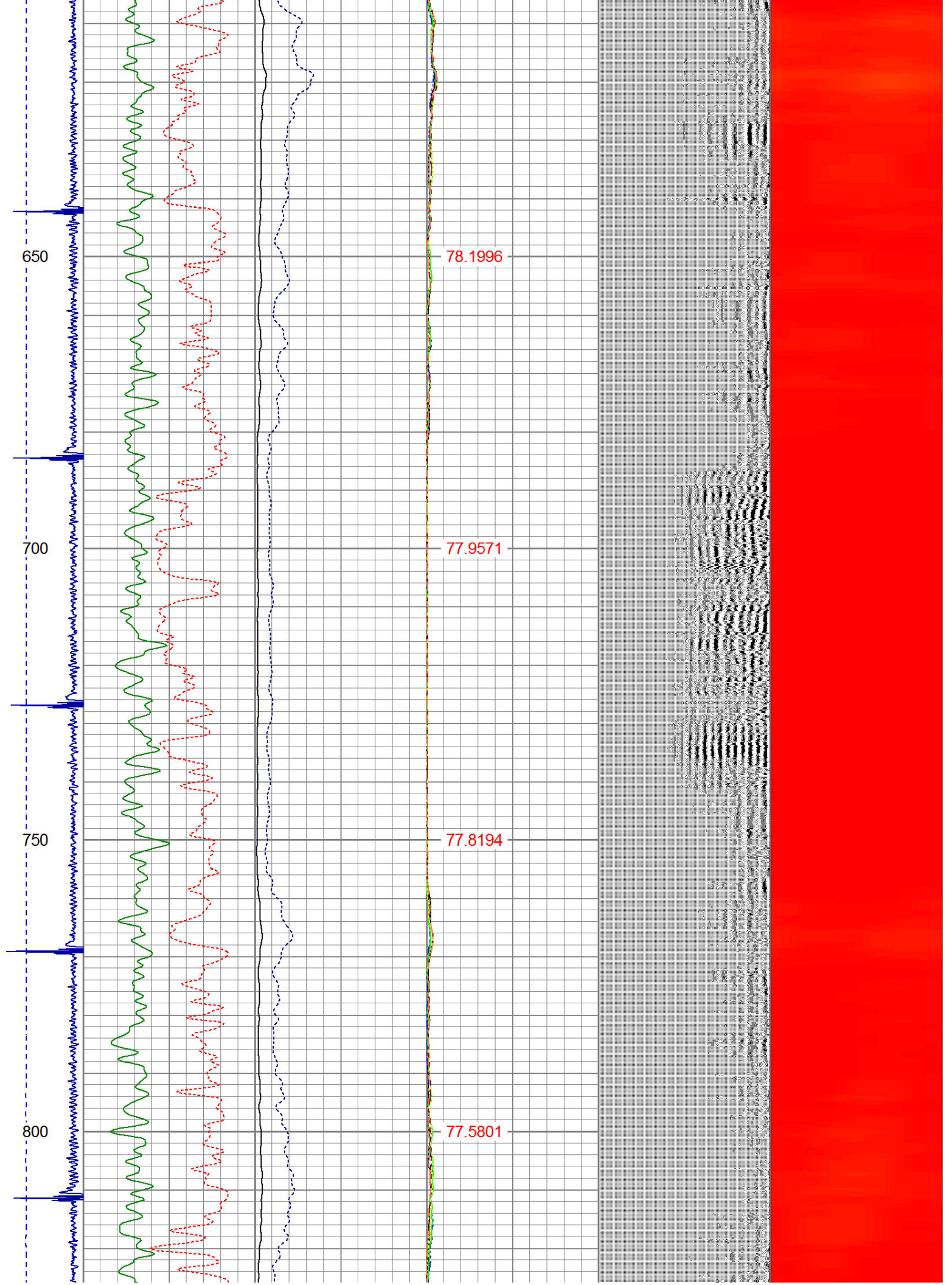
				PTS275	2.83	2.75	
HEADVOLT	16.13						
IntTemp	14.71						
WVF3FT	11.46			RBT-Probe (Base)	8.92	2.75	90.00
WVFCAL	11.46			Probe Radii Bond Tool with Digital Telemetry			
WVFS1	11.46						
WVFS2	11.46						
WVFS3	11.46						
WVFS4	11.46						
WVFS5	11.46						
WVFS6	11.46						
WVFS7	11.46						
WVFS8	11.46						
WVF5FT	10.46						
CNLSC	6.00			CNT-Probe_B (275)	2.88	2.75	40.00
CNSSC	5.17			6 bow centralizer			
CCL	3.64						
				GR-Probe (275)	4.33	2.75	30.00
				Probe 2.75"			
GR	0.90						
Dataset: rasmussen 23-29.db: field/well/run1/pass3 Total Length: 19.96 ft Total Weight: 165.00 lb O.D. 2.75 in							

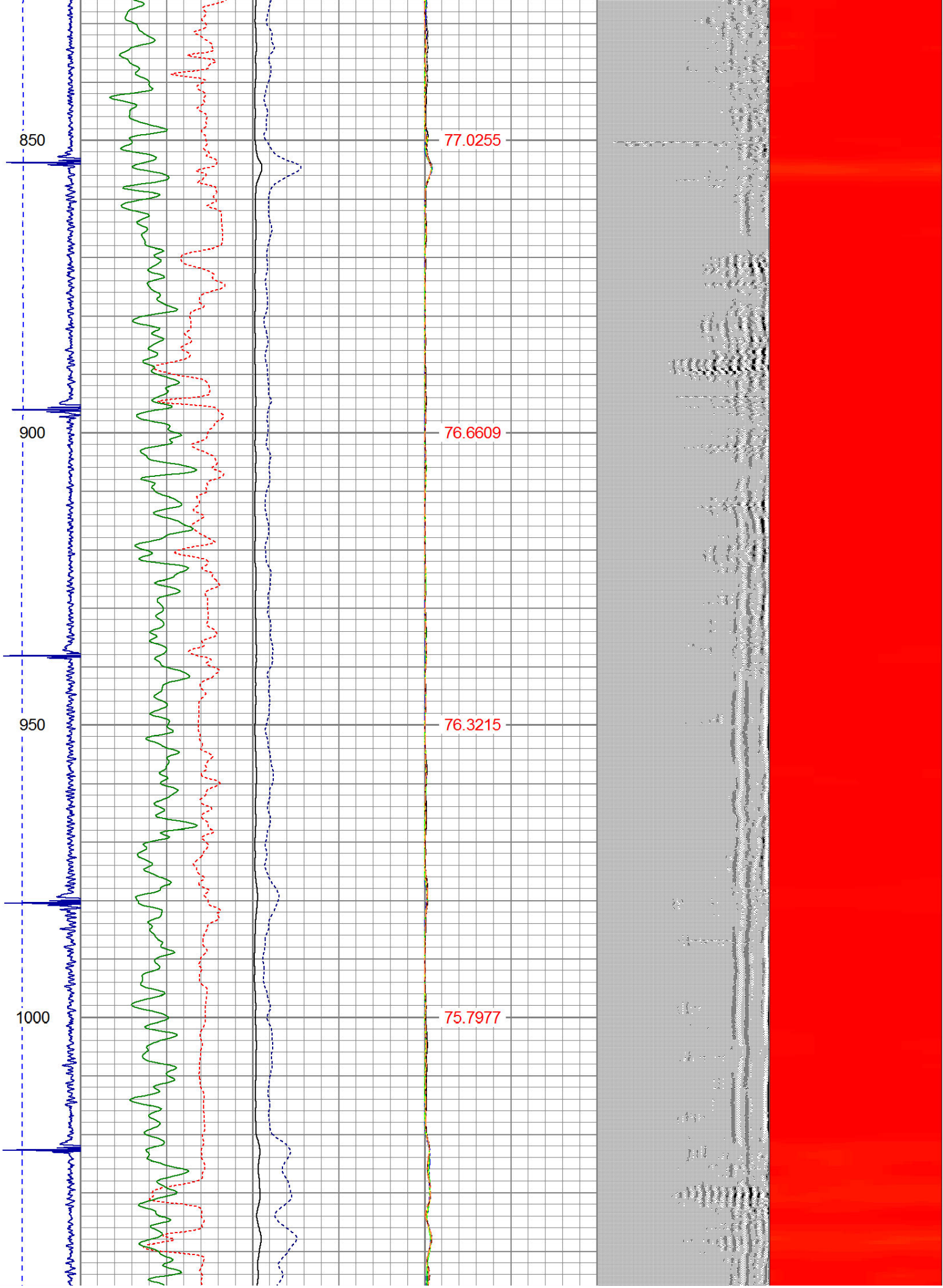
-9	CCL	1	200	TT (usec)	1000	0	AMP (mV)	100	0	AMPS1	100	200	VDL	1200	1	Cement Map	8								
LSPD (ft/min)	0	250	0	GR (GAPI)	200	0	AMPx5 (mV)	20	0	AMPS2	100				1		100								
			200	GR (GAPI)	400				0	AMPS4	100														
									0	AMPS5	100														
									0	AMPS6	100														
									0	AMPS7	100														
									0	AMPS8	100														
									IntTemp																
									(degF)																

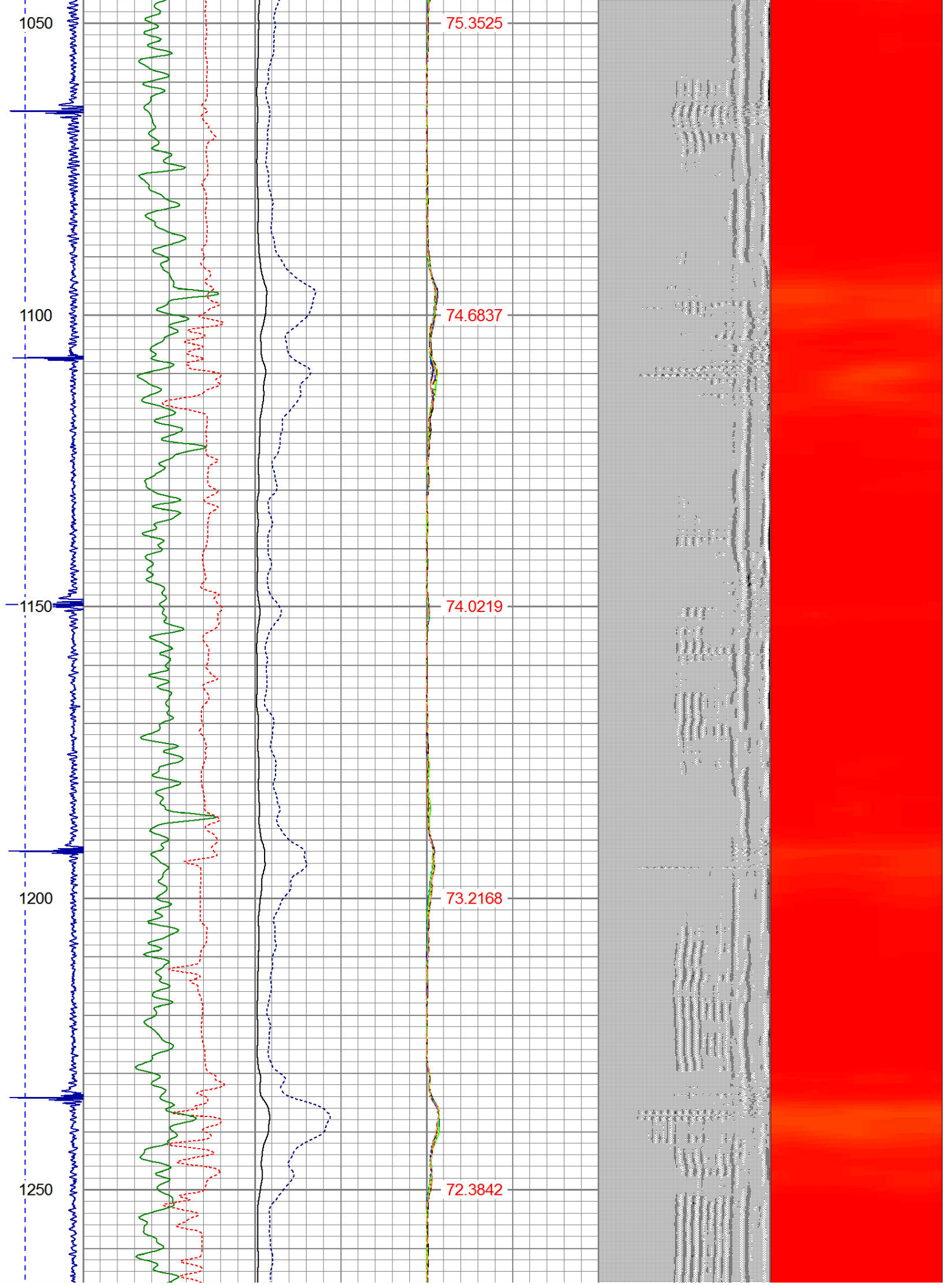


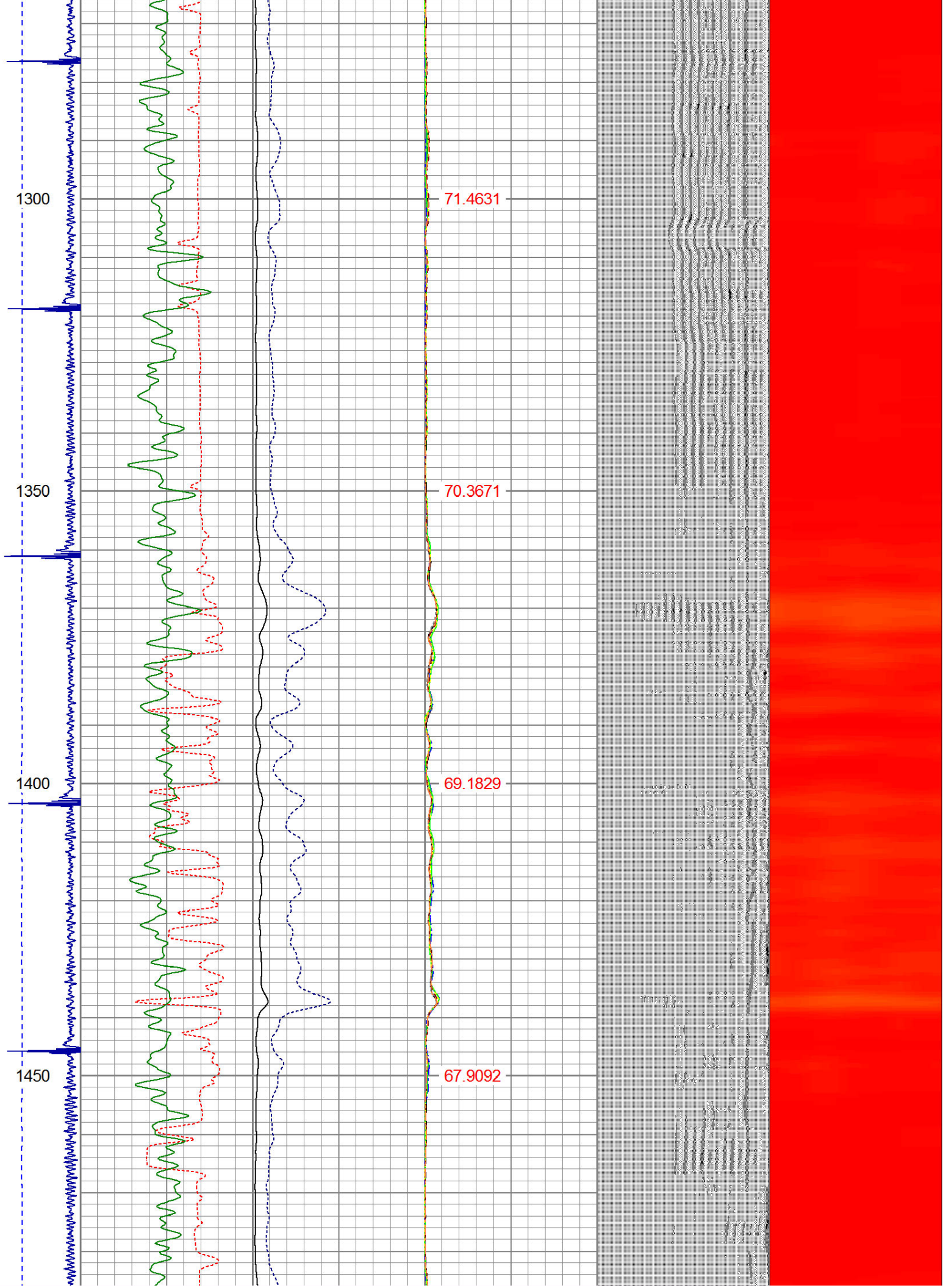


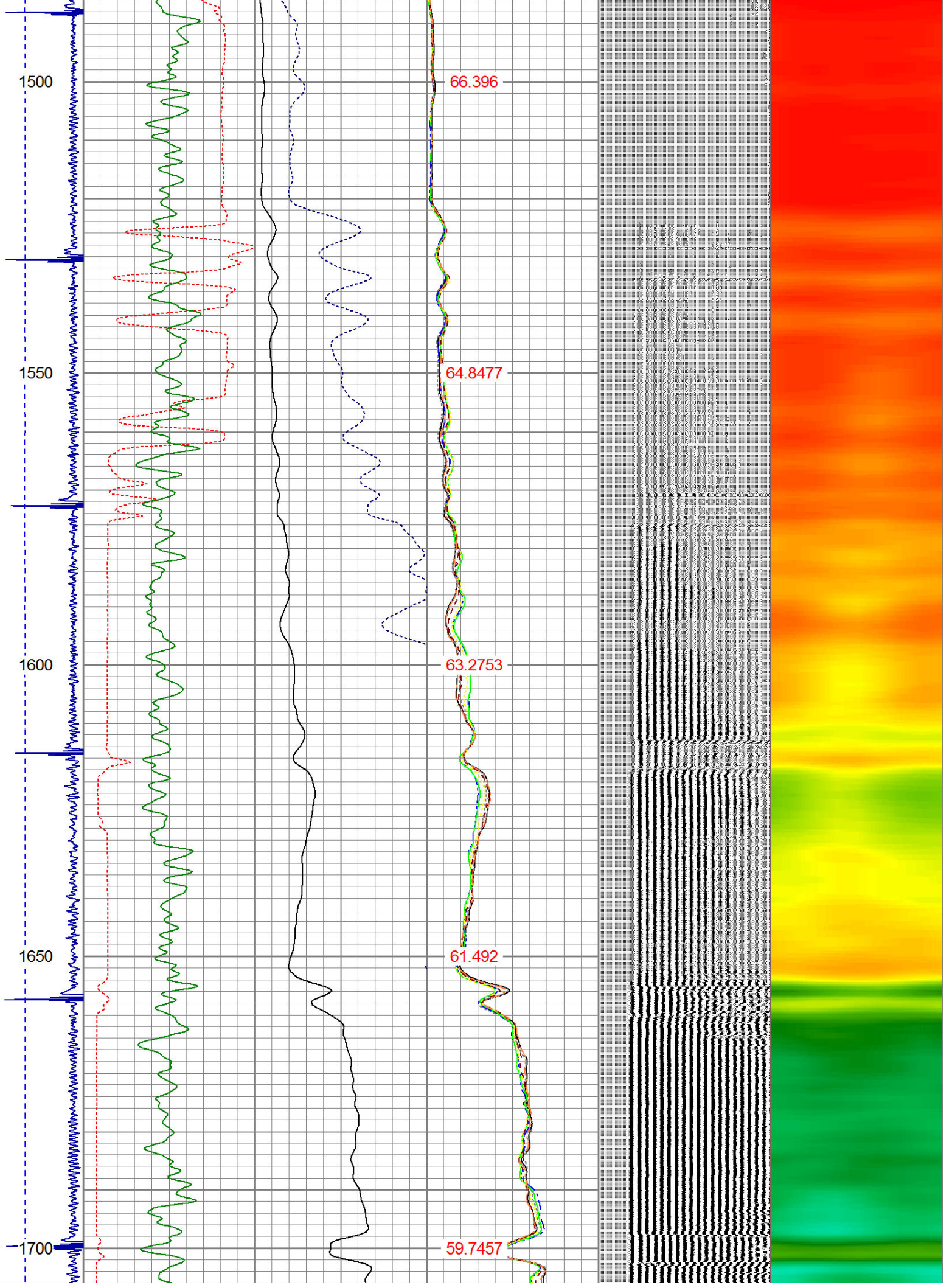


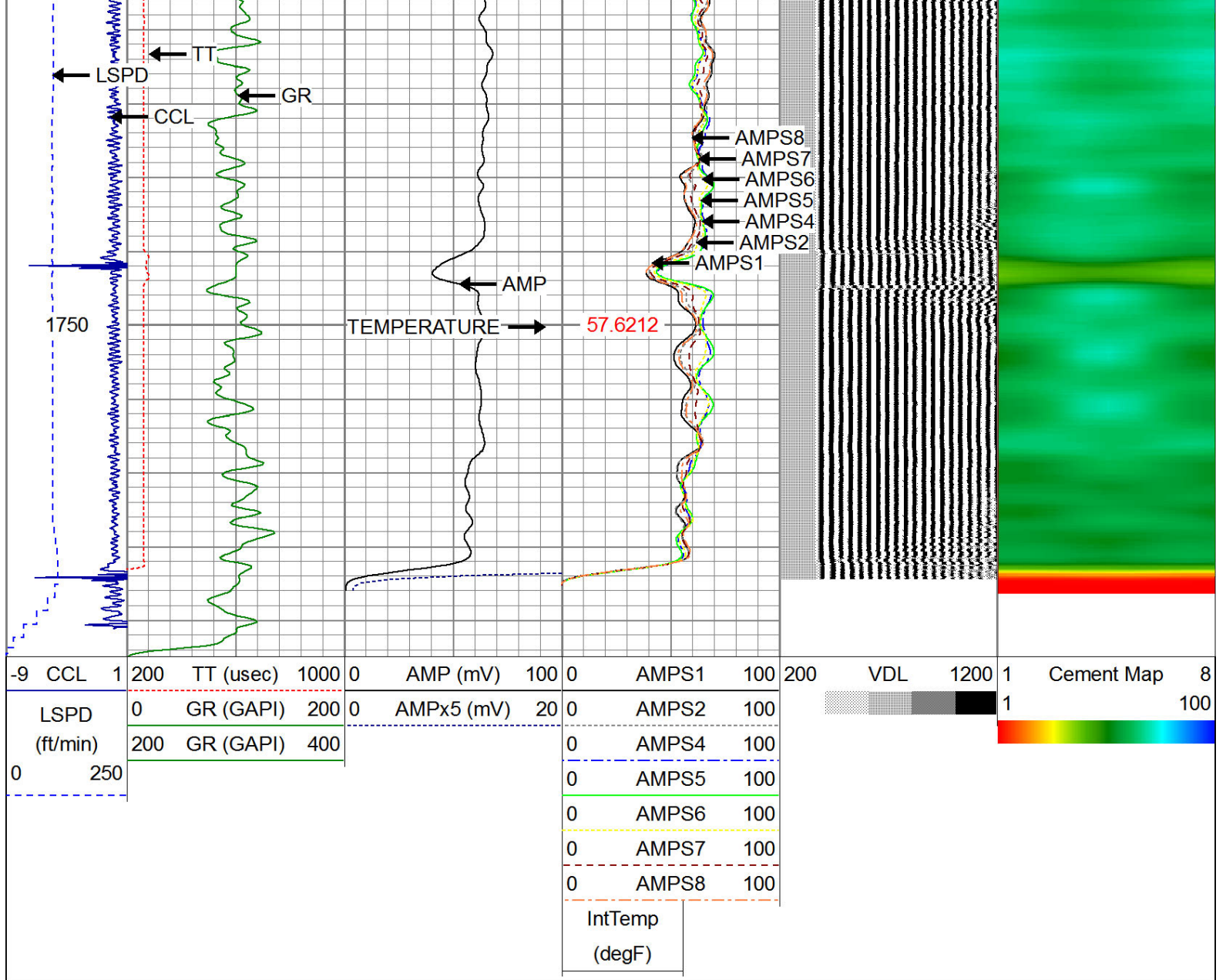












WARRIOR
ENERGY SERVICES

Company KERR McGEE OIL AND GAS

Well RASMUSSEN 23-29

Field WATTENBERG

County WELD

State CO