

LEGEND:

- = 90° SYMBOL
- = PROPOSED WELLHEAD.
- = TARGET BOTTOM HOLE.
- ◆ = ENTRY POINT
- ▲ = SECTION CORNERS LOCATED.

LINE TABLE

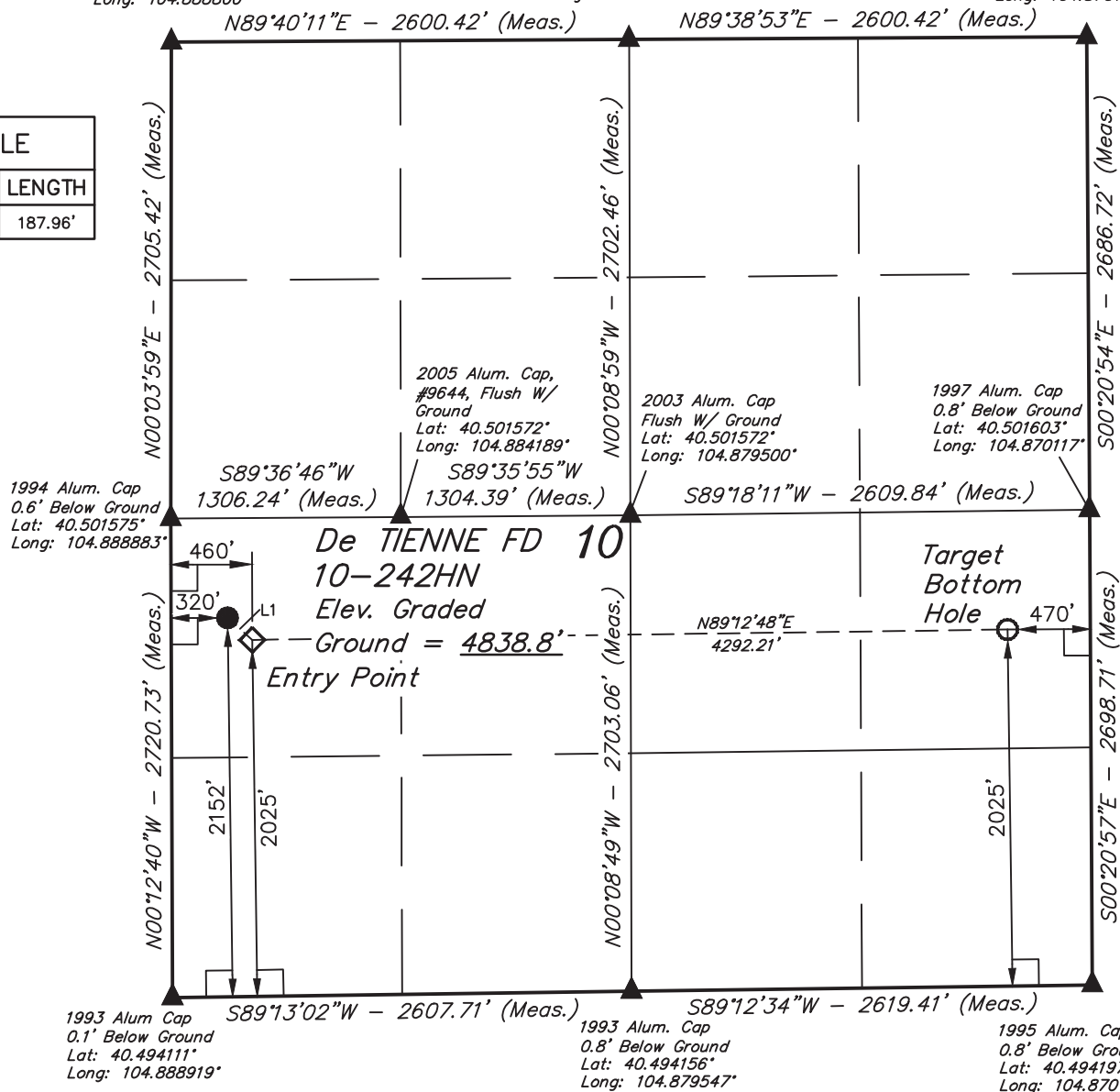
LINE	DIRECTION	LENGTH
L1	S48°19'51"E	187.96'

T6N, R67W, 6th P.M.

1994 Alum. Cap
0.6' Below Ground
Lat: 40.509000°
Long: 104.888800°

1997 Alum. Cap
0.5' Below Ground
Lat: 40.508986°
Long: 104.879450°

2000 Alum. Cap
0.5' Below Ground
Lat: 40.508975°
Long: 104.870100°



PDOP = 1.6

NAD 83 (TARGET BOTTOM HOLE)
LATITUDE = 40°29'59.09" (40.499747)
LONGITUDE = 104°52'18.52" (104.871811)
NAD 27 (TARGET BOTTOM HOLE)
LATITUDE = 40°29'59.16" (40.499767)
LONGITUDE = 104°52'16.62" (104.871283)

NAD 83 (ENTRY POINT)	NAD 83 (SURFACE LOCATION)
LATITUDE = 40°29'58.83" (40.499675)	LATITUDE = 40°30'00.08" (40.500022)
LONGITUDE = 104°53'14.06" (104.887239)	LONGITUDE = 104°53'15.87" (104.887742)
NAD 27 (ENTRY POINT)	NAD 27 (SURFACE LOCATION)
LATITUDE = 40°29'58.90" (40.499694)	LATITUDE = 40°30'00.14" (40.500039)
LONGITUDE = 104°53'12.16" (104.886711)	LONGITUDE = 104°53'13.97" (104.887214)

BASIS OF BEARINGS
BASIS OF BEARINGS IS A G.P.S. OBSERVATION
BASIS OF ELEVATION

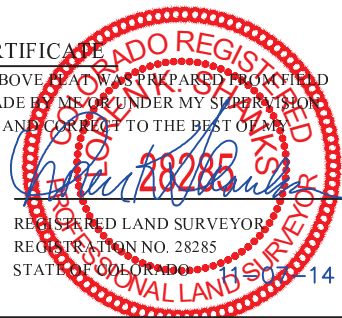
USGS COOPERATIVE BASE NETWORK CONTROL STATION,
DESIGNATION "VERMILYEA". NGS DATA SHEET LISTS THE
NAVD 88 ELEVATION AS BEING 5026 FEET.



UELS, LLC
Corporate Office * 85 South 200 East
Vernal, UT 84078 * (435) 789-1017



CERTIFICATE
THIS IS TO CERTIFY THAT THE ABOVE PLAT WAS PREPARED FROM FIELD
NOTES OF ACTUAL SURVEYS MADE BY ME OR UNDER MY SUPERVISION
AND THAT THE SAME ARE TRUE AND CORRECT TO THE BEST OF MY
KNOWLEDGE AND BELIEF.



GREAT WESTERN OIL & GAS COMPANY

De TIENNE FD 10-242HN
NW 1/4 SW 1/4, SECTION 10, T6N, R67W, 6th P.M.
WELD COUNTY, COLORADO

SURVEYED BY: DALAS NEILSEN	DATE: 10-17-14
DRAWN BY: J.W.	DATE DRAWN: 05-22-14
SCALE: 1" = 1000'	REVISED: 10-18-14

WELL LOCATION PLAT