



0299014

II 1428428

**McCuilough**

# BOND CEMENT AND/OR SONIC SEISMOGRAM LOG

# GAMMA RAY

FILING NO.

RBC-GR-SS-572

COMPANY COSEKA RESOURCES, U.S.A., LTD.

COLUMBINE SPRINGS #16-2-5-104

ORIGINAL

FIELD WILDCAT

COUNTY GARFIELD STATE COLORADO

LOCATION	DATE	TIME	DESCRIPTION
OS-045-06281-0000			

NE - NE

## OTHER SERVICES

SEC. 2 TWP. 5S RGE. 104W

ELEVATIONS:  
KB 6768'

PERMANENT DATUM	GL	ELEV.
LOG MEASURED FROM	KB	6754'

DF	--
GL	6754

DRILLING MEASURED FROM

DATE	6-14-82
------	---------

RUN NO.	ONE
---------	-----

[illegible]

DEPTH--DRILLER	3192'
----------------	-------

DEPTH-LOGGER 1744'

BOTTOM LOGGED INTERVAL	1740'
------------------------	-------

TOP LOGGED INTERVAL	600'
---------------------	------

TYPE FLUID IN HOLE	WATER

SALINITY PPM CL.

DENSITY LB./GAL.

LEVEL	FULL

MAX. REC. TEMP. DEG. F.	90
-------------------------	----

OPR. RIG TIME	3 HRS
---------------	-------

RECORDED BY	NOMAK
-------------	-------

WITNESSED BY	MR. M
--------------	-------

RUN	BORE HOLE RECORD
-----	------------------

BORE HOLE RECORD

## CASING RECORD

NO.	BIT	FROM	TO	SIZE	WGT.	FROM	TO
1	--	--	--	9-5/8	--	0'	214'

8-3/4	214'	3192'	7"	20-23	0'	1D
-------	------	-------	----	-------	----	----

[illegible]



% RETARDER

SLURRY WEIGHT

BREAKDOWN PRESSURE

SURFACE MAX. PRESS.

BOTTOM MAX. PRESS.

GAMMA RAY

RUN NO. ONE  
TOOL MODEL NO. 5547-0-1  
DIAM. 3.5"  
DETECT. MODEL NO. 5547-18  
TYPE SCINT/DEWAR  
LENGTH 3"  
DIST. TO N. SOURCE

NEUTRON

RUN NO.  
LOG TYPE  
TOOL MODEL NO.  
DIAM.  
DETECT. MODEL NO.  
TYPE  
LENGTH  
SOURCE MODEL NO.  
SERIAL NO.  
SPACING  
TYPE  
STRENGTH

GENERAL

HOIST TRUCK NO. 1400  
INST. TRUCK NO. 1400  
TOOL SERIAL NO. 385  
LOG TICKET NO. 118690

LOGGING DATA

GENERAL

GAMMA RAY

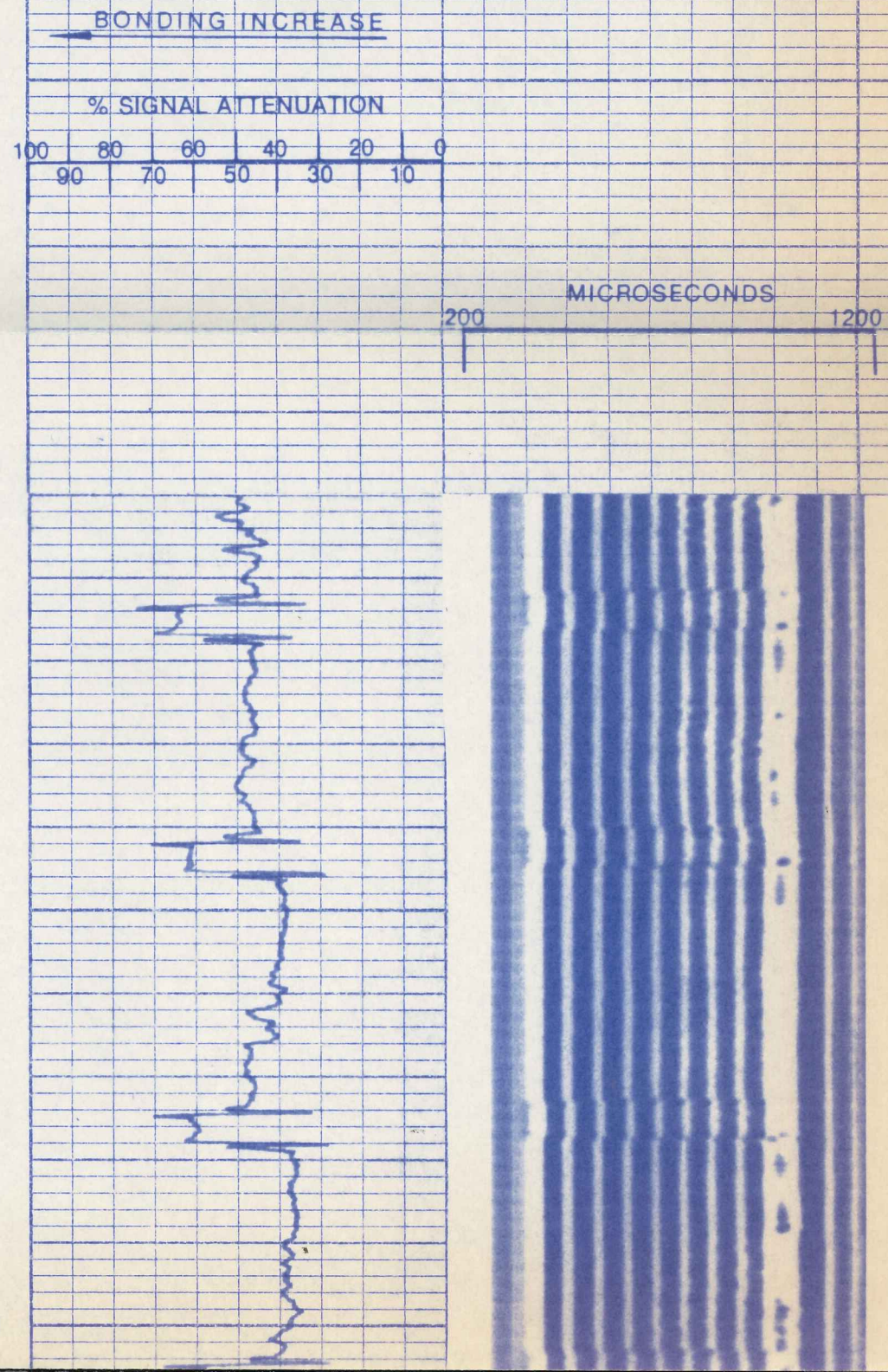
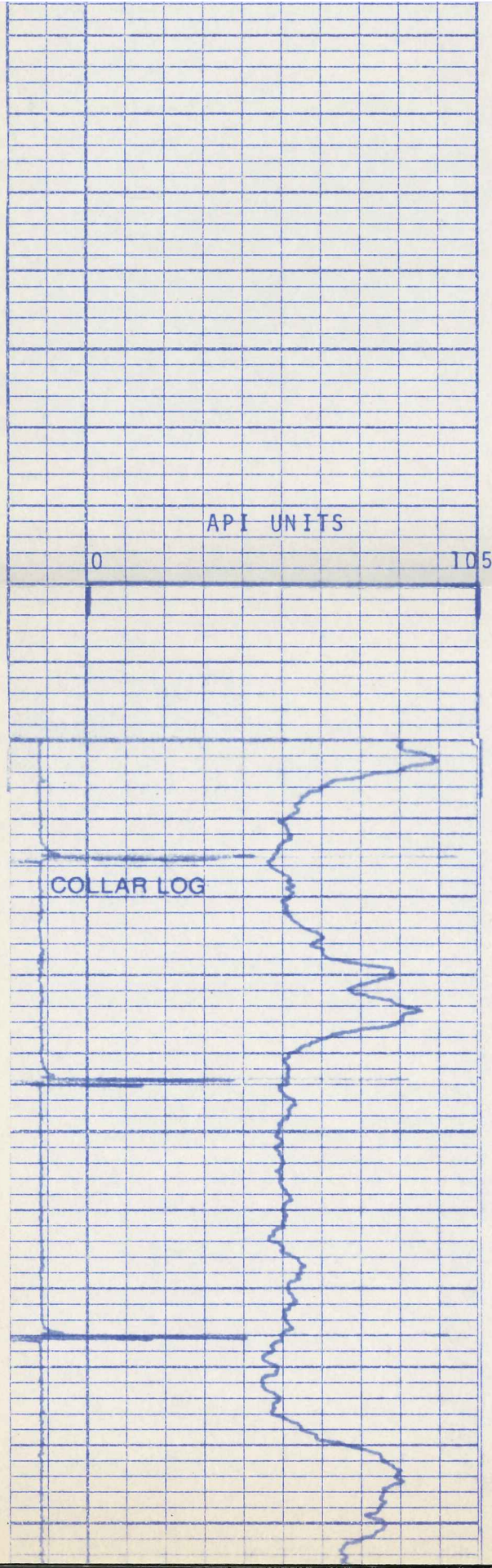
NEUTRON

RUN NO.	DEPTH		SPEED FT./MIN.	T. C. SEC.	SENS. SETTINGS	ZERO DIV. L. OR R.	API GR. UNITS PER LOG DIV.	T. C. SEC.	SENS. SETTINGS	ZERO DIV. L. OR R.	API N. UNITS PER LOG DIV.
	FROM	TO									
1	1740'	600'	30	3	G-500 D-200 R-5	-0-	10.5				

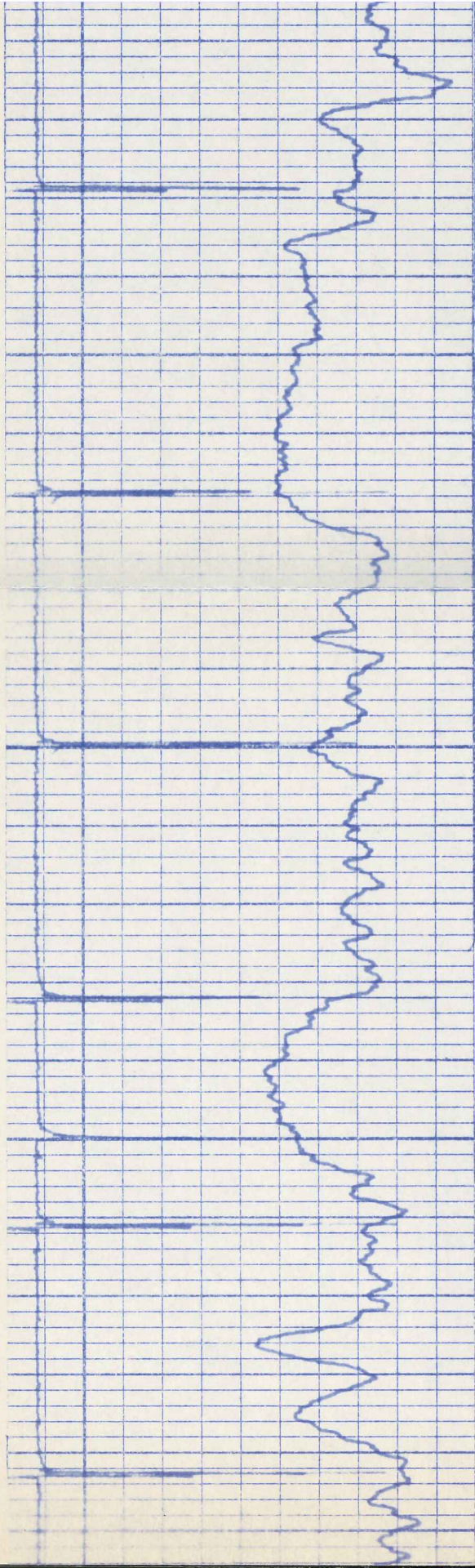
REMARKS:

GAMMA RAY ZERO AND STATISTICAL TAKEN AT 820'



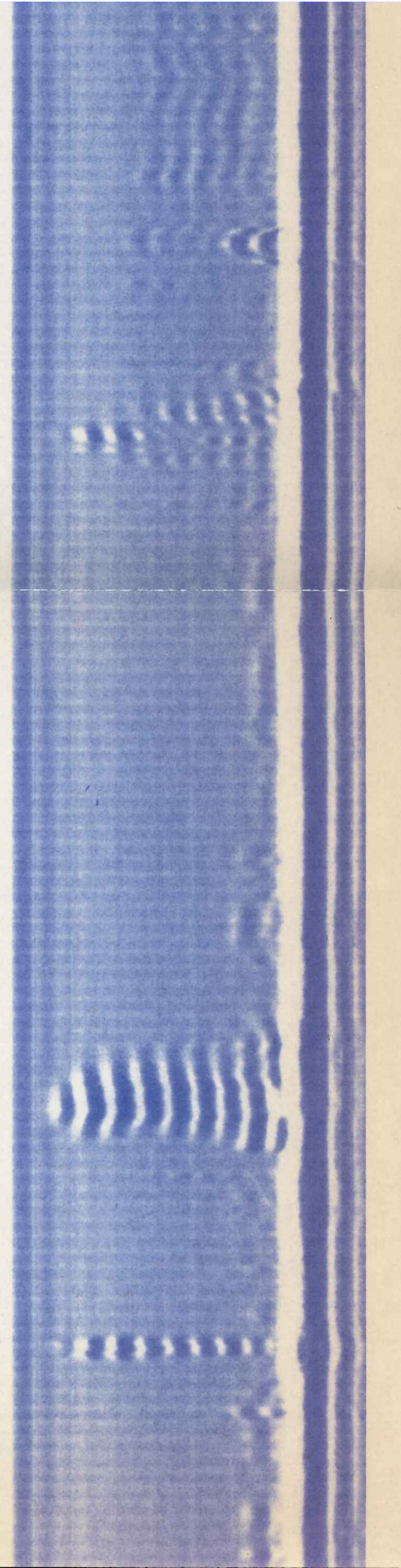
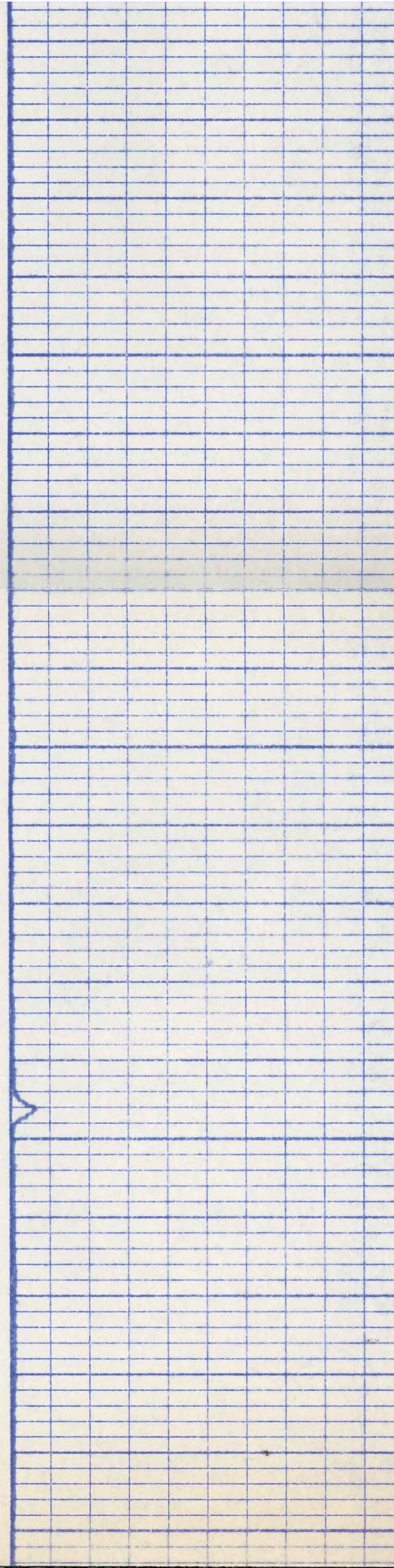






800

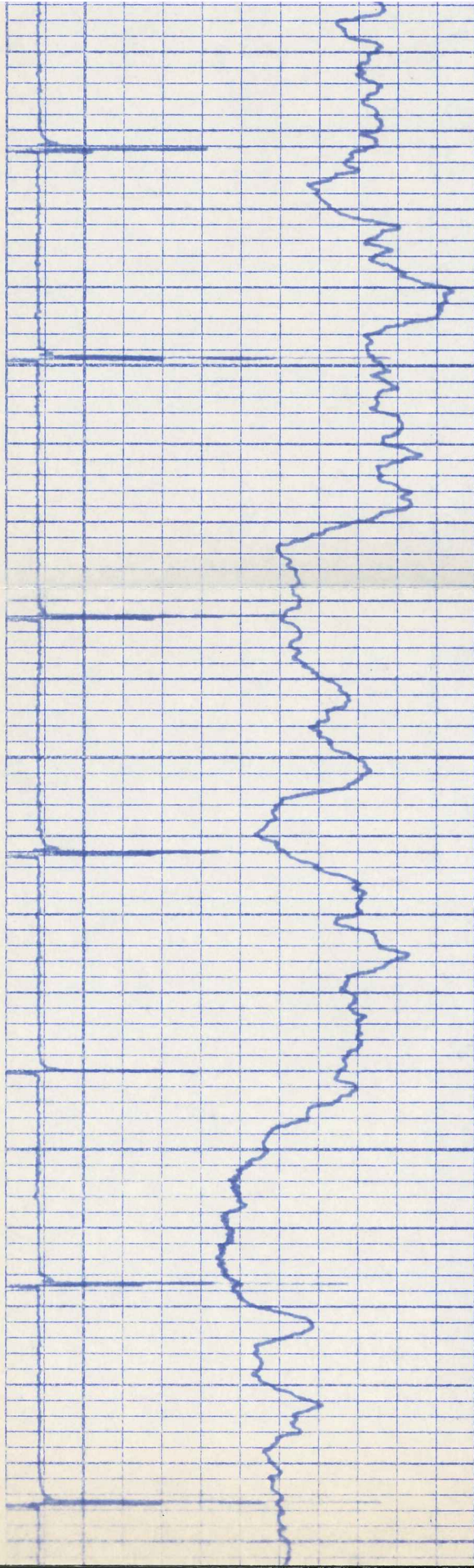
900





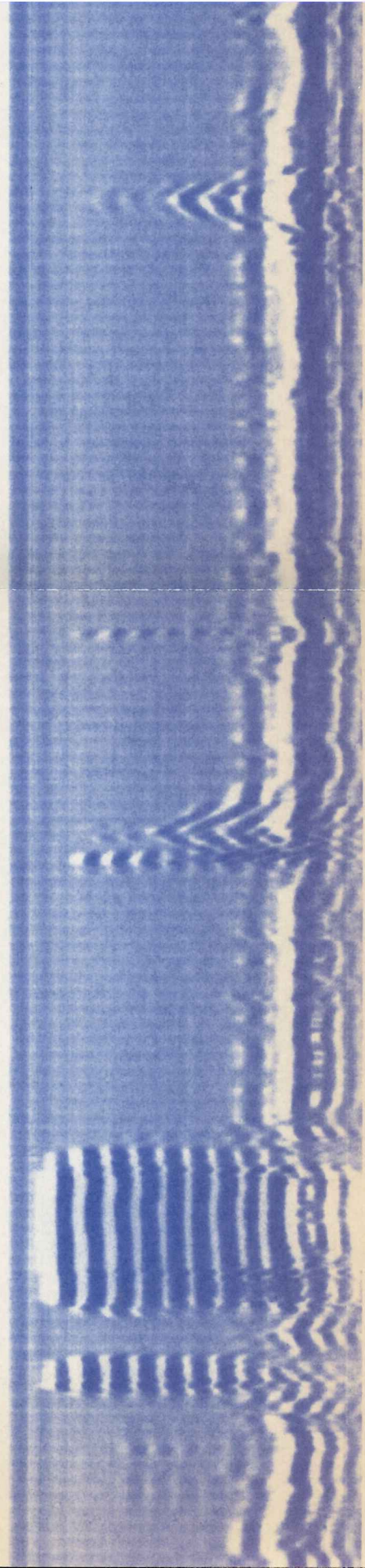
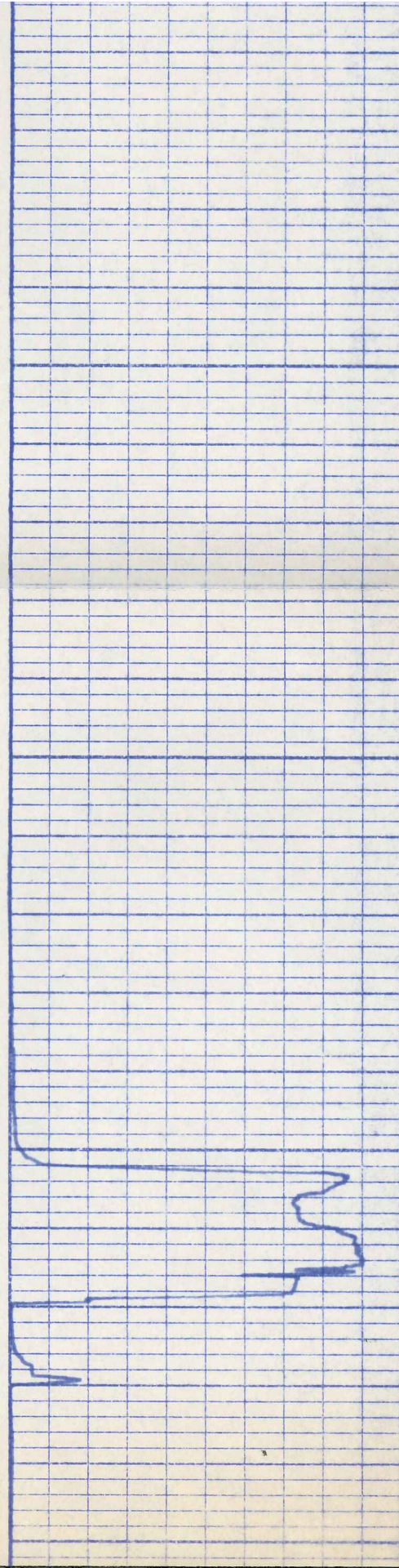




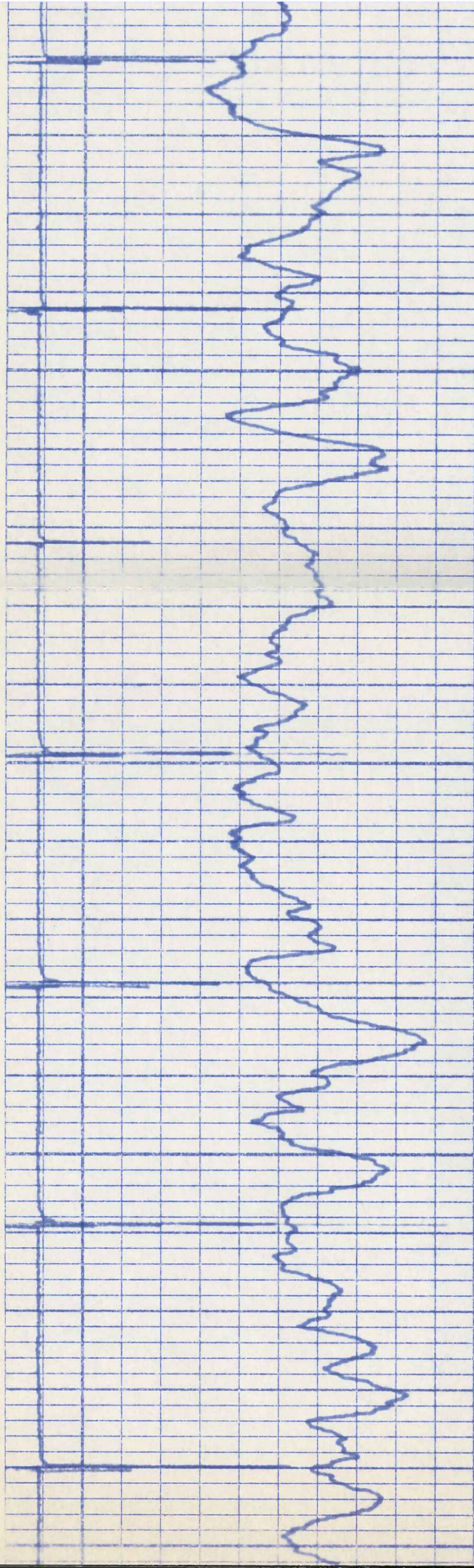


1300

1400

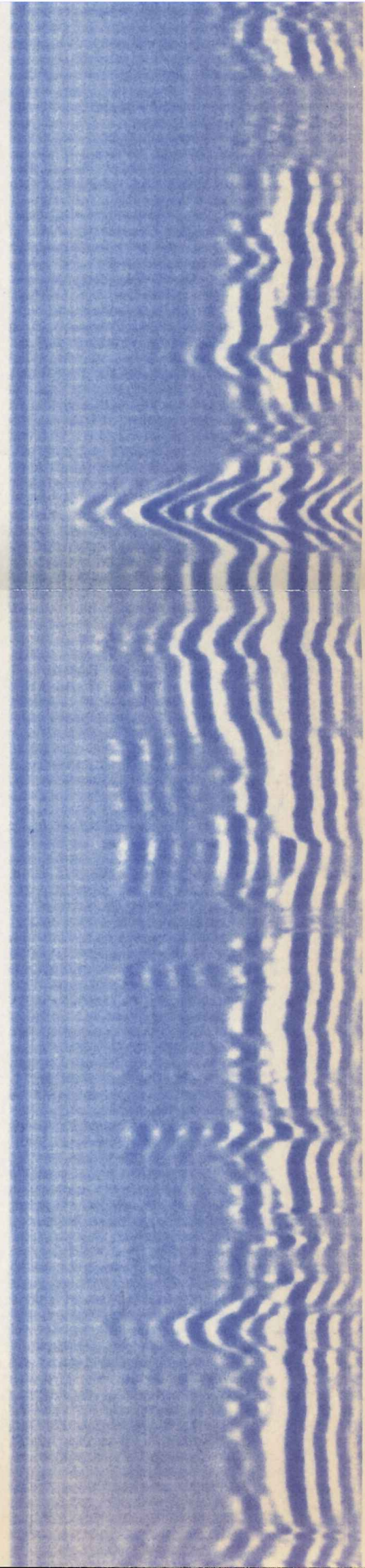
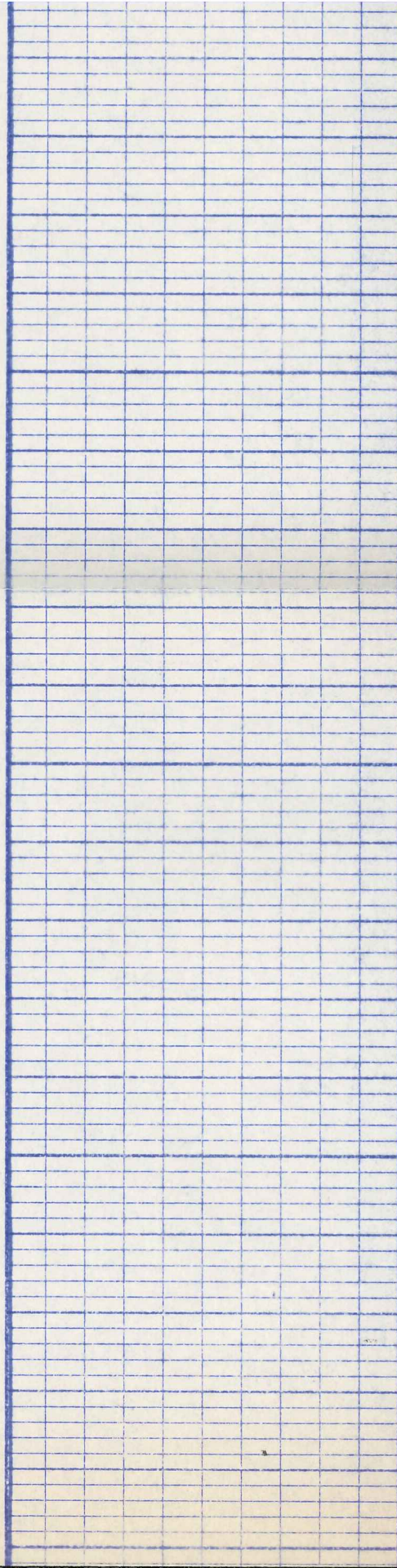






1600

1700





0 105  
API UNITS

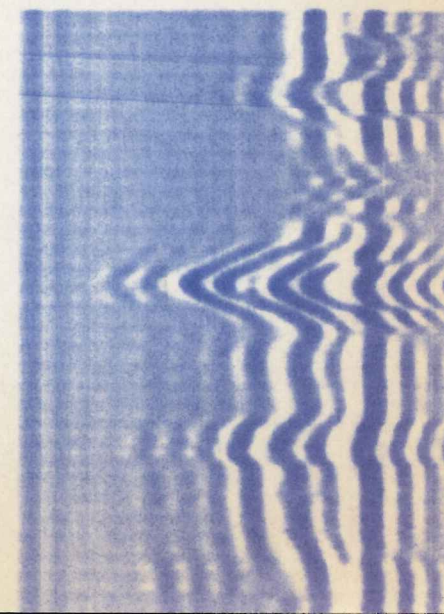
200 1200  
MICROSECONDS

90 70 50 30 10 0  
100 80 60 40 20 0  
% SIGNAL ATTENUATION  
BONDING INCREASE

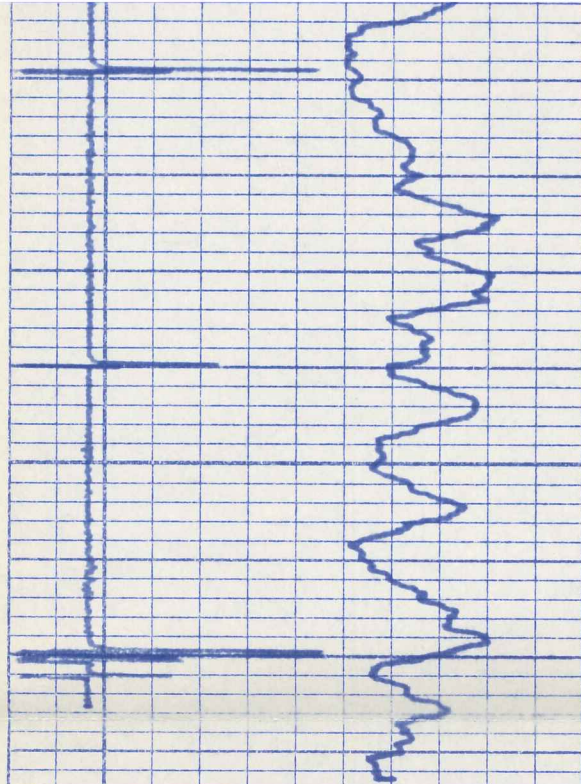
REPEAT SECTION

1550

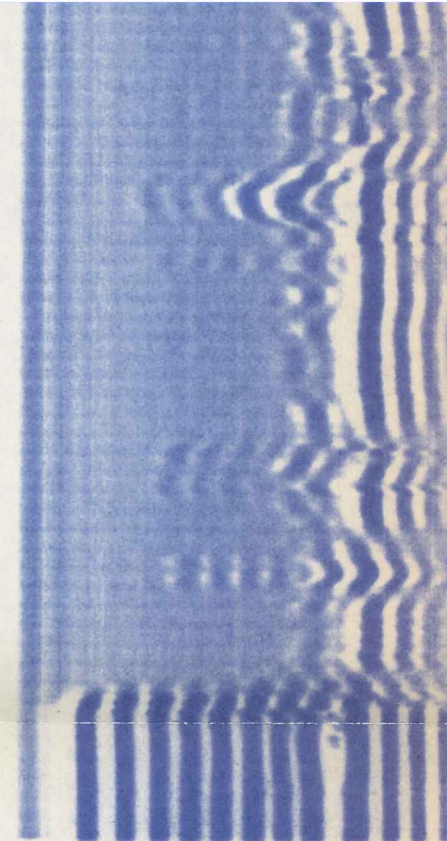
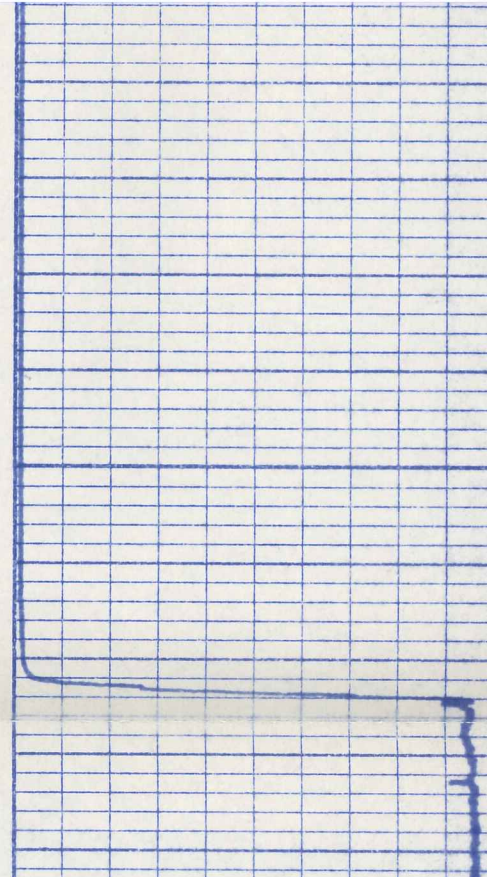
1600







1700



SCOPE PICTURES

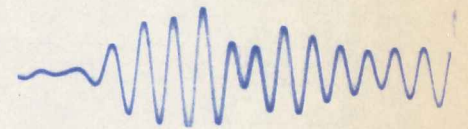
MICROSECONDS

0

1000



FREE PIPE AT 1411'

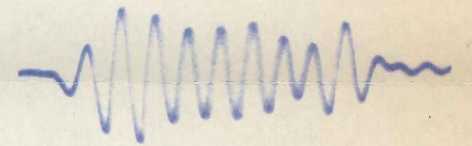


MICROSECONDS

200

1200

FREE PIPE AT 1411'



BONDED PIPE AT 1468'





