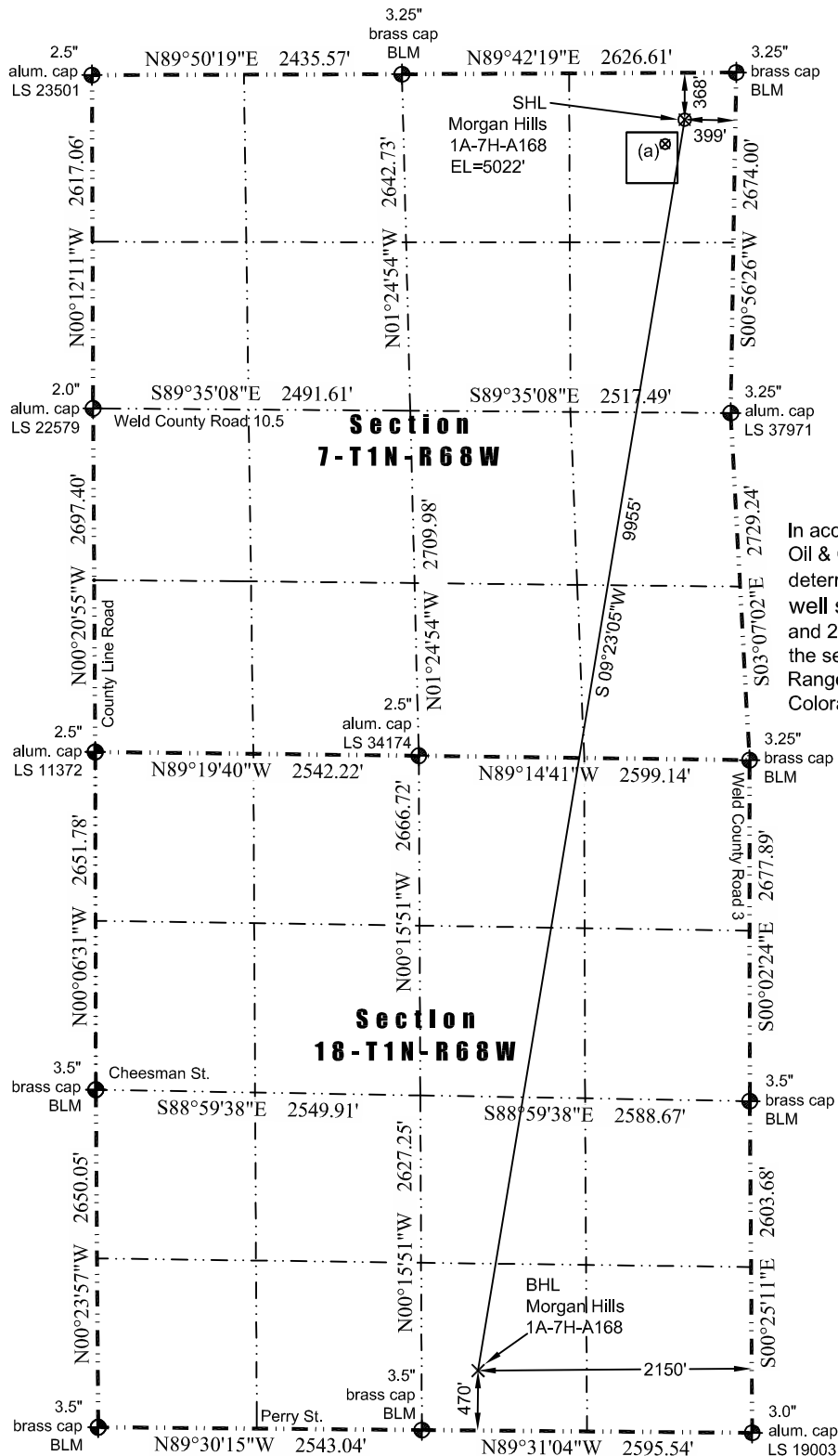




# WELL LOCATION CERTIFICATE

THIS MAP DOES NOT REPRESENT A BOUNDARY SURVEY

Washburn Land Surveying  
www.WashburnSurveying.com  
970-232-9645



Scale 1" = 1400'

0 1400

approximate scale

## LEGEND

◆ - found survey monument

## (a) Existing Well Data:

Woolley 41-7  
Latitude: N 40.071463°  
Longitude: W 105.039372°  
FNL: 559'  
FEL: 549'  
ELEV: 5034'  
PDOP: 2.0

In accordance with a request from Jay Knutson of EnCana Oil & Gas (USA) Inc., Washburn Land Surveying, LLC has determined the location of the **Morgan Hills 1A-7H-A168** well site to be SHL: 368' FNL and 399' FEL, (BHL: 470' FSL and 2150' FEL), as measured at ninety (90) degrees from the section lines of Sections 7 and 18, Township 1 North, Range 68 West of the 6th Principal Meridian, Weld County Colorado.

## Proposed Surface Hole Data:

Latitude: N 40.071988° (BHL: 40.045048°)  
Longitude: W 105.038820° (BHL: 105.044801°)  
PDOP: 1.9

## Nearest:

Building Unit: 506' northwest  
Building: 506' northwest  
Above Ground Utility: 559' northeast  
Public Road: 384' east  
Railroad: 3,647' southeast  
Property Line: 358' east  
Well Window: SHL is 114' outside  
High Occupancy Building Unit: 4,476' northwest  
Existing Well: Woolley 41-7, 246' southwest

## Notes:

- 1) Bearings and distances based on NAD 83 Colorado North State Plane Coordinate, using RTK GPS observations taken 8/25/14 by operator Ryan Christi.
- 2) Conversion factor to ground (1.0002746380).
- 3) Elevations based on NAVD 88 GPS heights and Geoid 2009 corrections.
- 4) See Location Drawing for visible improvements within 500 feet of Pad Site.
- 5) The surface use is a cultivated field.

NOTICE: According to Colorado law you must commence any legal action based upon any defect in this W.L.C. within three years after you first discover such defect. In no event may any action based upon any defect in this W.L.C. be commenced more than ten years from this said date of the certification shown hereon.

I hereby certify that this Well Location Certificate was prepared by me or under my direct supervision on 8/25/2014 for and on behalf of EnCana Oil & Gas (USA) Inc. That it is not a Land Survey Plat or an Improvement Survey Plat and that it is not to be relied upon for establishment of fences, buildings, or other future improvement lines.

John Robert McGee LS#38219  
Well: Morgan Hills 1A-7H-A168 WLC