

1801 Broadway
Suite 500
Denver, Colorado 80202



Callie Fiddes
Regulatory Technician
Tel: 303.398.0550
E-mail: cfiddes@gwogco.com

December 15, 2014

Colorado Oil and Gas Conservation Commission
1120 Lincoln Street, Suite 801
Denver, Colorado 80203

RE: **Proposed Wellbore Spacing Unit**
Marcus LD 11-377HC

Codell New Drill
Township 1 North, Range 67 West, 6th P.M.
Section 34
Weld County, Colorado

Dear Director:

Great Western Operating Company, LLC is planning to drill the above captioned well in accordance with the provisions of COGCC Rule 318A.e.

Great Western proposed wellbore spacing unit consists of:

- **W/2 Sec 2, W/2 Sec 11**
- **640 acres**

The 30 day notification time period has passed and we have not received any objections to such well locations or proposed spacing unit, therefore Great Western hereby requests the Director to approve the above mentioned well. Great Western Operating Company, LLC respectfully requests that the COGCC review the enclosed map illustrating the proposed wellbore spacing unit.

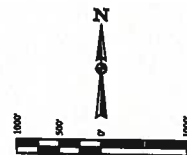
Respectfully,

Callie Fiddes

Callie Fiddes
Regulatory Technician
Great Western Operating Company, LLC

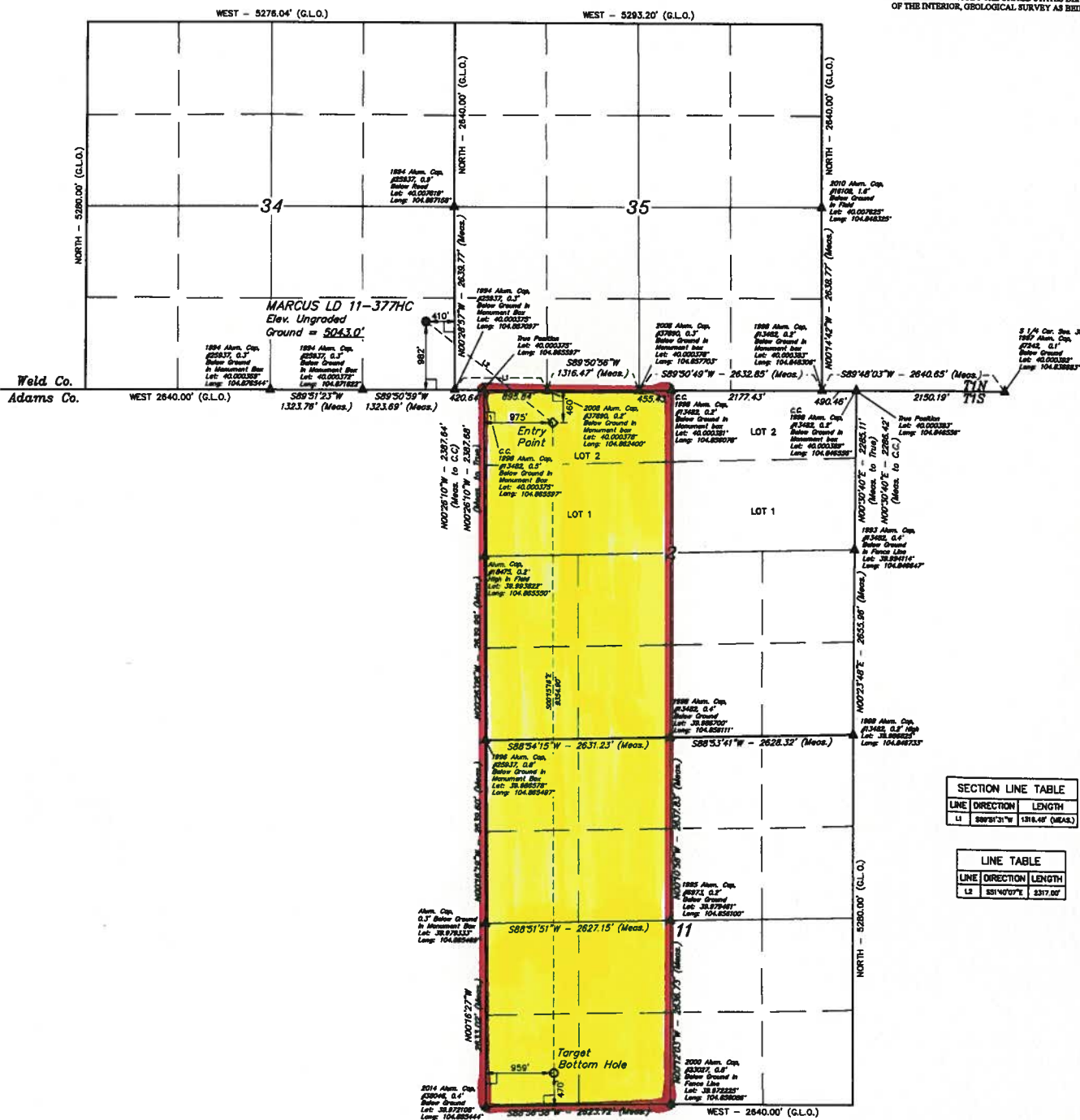
LEGEND:
 - 90° SYMBOL
 - PROPOSED WELLHEAD
 - ENTRY POINT
 - TARGET BOTTOM HOLE
 - SECTION CORNERS LOCATED

T1N, R67W, 6th P.M.



BASIS OF BEARINGS
 BASIS OF ELEVATION

BENCHMARK JR 53 9026 LOCATED IN THE SW 1/4 SE 1/4 OF SECTION 18, T1N, R67W, 6th P.M. TAKEN FROM 1928 PUBLISHED DATUM BY THE UNITED STATES DEPARTMENT OF THE INTERIOR, GEOLOGICAL SURVEY AS BEING 5022 FEET.



SECTION LINE TABLE		
LINE	DIRECTION	LENGTH
L1	S89°31'W	1316.40' (MEAS.)

LINE TABLE		
LINE	DIRECTION	LENGTH
L2	S51°40'W	2317.00'

THIS IS TO CERTIFY THAT THE ABOVE SET BY MEASUREMENT FROM THE NOTES OF ACTUAL SURVEYS MADE BY ME OR UNDER MY SUPERVISION AND THAT THE SAME ARE TRUE AND CORRECT TO THE BEST OF MY KNOWLEDGE AND BELIEF.

[Signature]
 JARED CHRISTOPHER, L.C.
 REGISTERED LAND SURVEYOR
 LICENSE NO. 7881
 STATE OF COLORADO

GREAT WESTERN OIL & GAS COMPANY
 MARCUS LD 11-377HC
 SE 1/4 SE 1/4, SECTION 34, T1N, R67W, 6th P.M.
 WELD COUNTY, COLORADO

UWLS, LLC
 Corporate Office: 10 South 200 East
 Vernal, UT 84078 • (435) 789-1817

UWLS
 SURVEYED BY: JARED CHRISTOPHER, L.C. DATE: 11-26-14
 DRAWN BY: J.W. DATE DRAWN: 11-26-14
 SCALE: 1" = 1000' REVISION: 05-28-05
 WELL LOCATION PLAN

FOOP - L3		
NAD 83 (FUTURE) BOTTOM HOLE	NAD 83 (FUTURE) POINT	NAD 83 (FUTURE) LOCATION
LATITUDE = 39°54'34.39" (N 994442)	LATITUDE = 39°54'34.31" (N 999116)	LATITUDE = 39°54'34.31" (N 999116)
LONGITUDE = 104°51'43.39" (W 104 86258)	LONGITUDE = 104°51'43.39" (W 104 86258)	LONGITUDE = 104°51'43.39" (W 104 86258)
NAD 83 (FUTURE) BOTTOM HOLE	NAD 83 (FUTURE) POINT	NAD 83 (FUTURE) LOCATION
LATITUDE = 39°54'34.44" (N 994446)	LATITUDE = 39°54'34.44" (N 999118)	LATITUDE = 39°54'34.44" (N 999118)
LONGITUDE = 104°51'41.39" (W 104 86149)	LONGITUDE = 104°51'41.39" (W 104 86149)	LONGITUDE = 104°51'41.39" (W 104 86149)