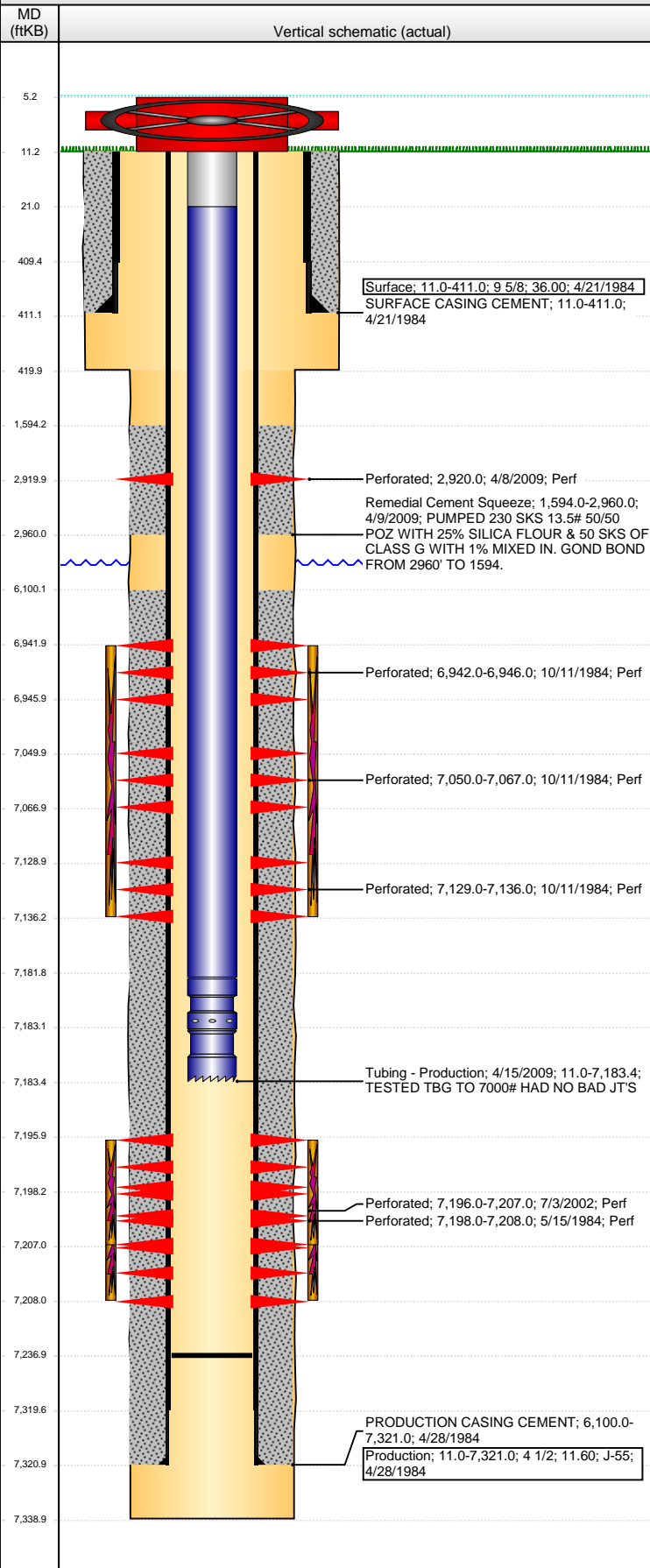


Well Name: DAVIS, W. 02-33

VERTICAL - ORIGINAL HOLE, 1/13/2015 8:40:48 AM



Well Header

API	Business Unit	District	Well Config
05-123-11782	DJ BASIN	15	VERTICAL
Original KB Elevation (ft)	KB - GL / MSL (ftKB)	Spud Date	P & A Date
4,711.00	11.00	4/20/1984	

Comment
RECOMMEND RUNNING CBL DURING P&A, CBL RAN IN 2009, BUT IT IS NOT AVAILABLE.

RECORDS INDICATE CEMENT FROM 2960' TO 1594'.

RECORDS ALSO SAY SLIDING SLEEVE @ 2932'.

Directions To Well

59 ST. & F ST WEST 3/10. NORTH 1/10. EAST INTO.

Congressional Location

Quarter 1	Quarter 2	Quarter 3	Quarter 4	Section	Township	Twnshp N...	Range	Rng E/W Dir
		SW	SE	33	6	N	66	W

Bottom Hole Location

North-South Distance (ft)	From N or S Line	East-West Distance (ft)	From E or W Line

Plug Back Total Depths

Date	Depth (ftKB)	Method	Com
4/28/1984	7,241.0	TAG	
4/15/2009	7,237.0	TAG	C/O WITH NC/SN

Wellbore Sections

Section Des	Size (in)	Act Top, MD (ftKB)	Act Btm, MD (ftKB)
SURFACE	12 1/4	11.0	420.0
PRODUCTION	7 7/8	420.0	7,339.0

Zone Statuses

Zone Name	Status Date	Status	Job
NIOBRARA	11/29/1984	PR	RECOMPLETION, 10/21/1984 00:00
CODELL	6/26/1984	PR	DRILLING/COMPLETION - ORIGINAL, 4/20/1984 00:00
CODELL	11/29/1984	SI	RECOMPLETION, 10/21/1984 00:00
CODELL	7/16/2002	PR	COMMINGLE ZONES, 5/20/2002 00:00

Casing Strings

Surface, 411.0ftKB

Casing Description	Run Date	OD (in)	Wt/Len (l...)	Grade	Top, MD (ft...)	MD (ftKB)
Surface	4/21/1984	9 5/8	36.00		11.0	411.0

Production, 7,321.0ftKB

Casing Description	Run Date	OD (in)	Wt/Len (l...)	Grade	Top, MD (ft...)	MD (ftKB)
Production	4/28/1984	4 1/2	11.60	J-55	11.0	7,321.0

Cement

Description	Top Depth (ftKB)	Bottom Depth (ftKB)
SURFACE CASING CEMENT	11.0	411.0
PRODUCTION CASING CEMENT	6,100.0	7,321.0
Remedial Cement Squeeze	1,594.0	2,960.0

Tubing Strings

Tubing Description	Run Date	String...	ID (in)	Wt (lb/ft)	Grade	Len (ft)	Set De...
Tubing - Production	7/22/2002	2 3/8	1.995	4.70	J-55	7,171.00	
Tubing Description	Run Date	String...	ID (in)	Wt (lb/ft)	Grade	Len (ft)	Set De...
Tubing - Production	4/15/2009	2 3/8	1.995	4.70	J-55	7,172.39	

Tubing Components

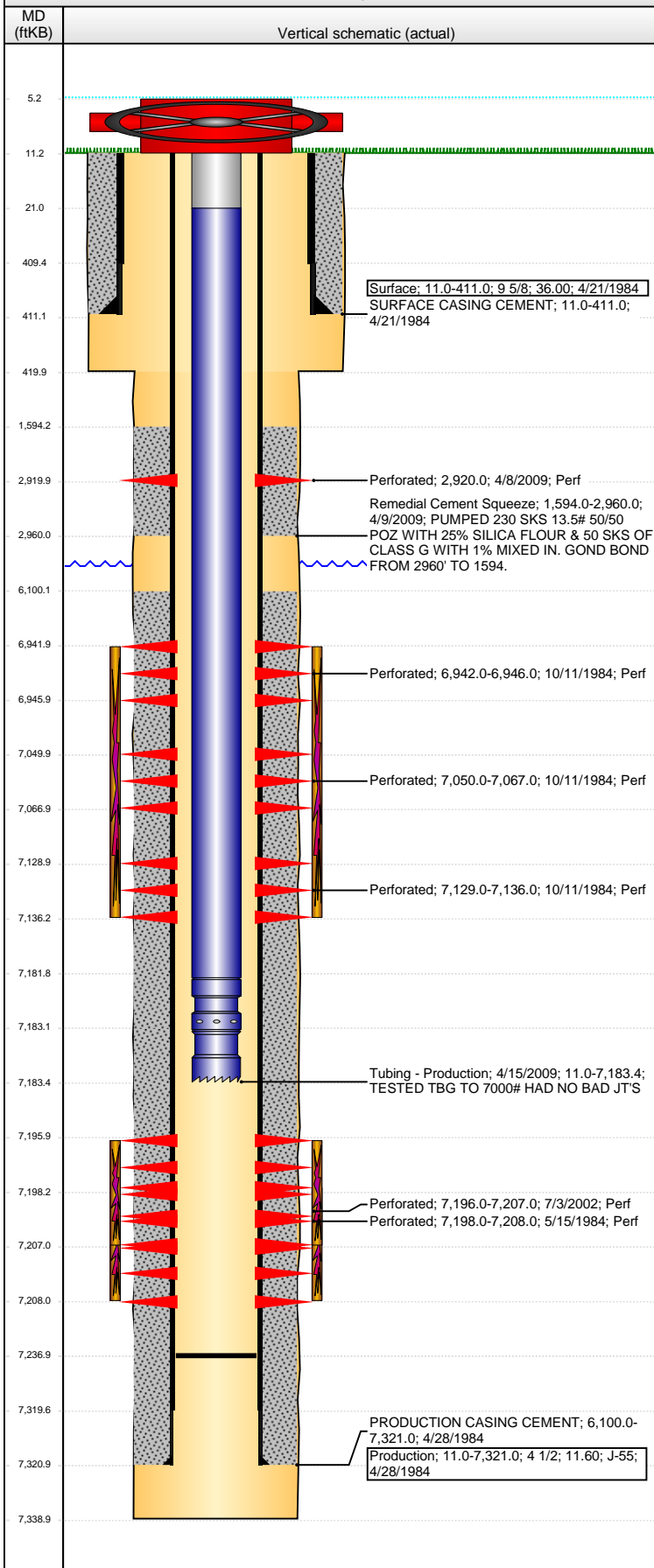
Item Des	OD (in)	Wt (lb/ft)	Grade	Jts	Len (ft)	Btm (ftKB)	Btm (TVD) (ftKB)
Tubing Pup Joint	2 3/8	4.70	J-55	1	10.00	21.0	
Tubing	2 3/8	4.70	J-55	228	7,160.89	7,181.9	
Seal Nipple	2 3/8	4.70	J-55	1	1.20	7,183.1	
Notched collar	2 3/8	4.70	J-55	1	0.30	7,183.4	

Perforation Data

Zone	Bnch/St g	Entered Shot Total	Top (ftKB)	Btm (ftKB)	Date
NIOBRARA, ORIGINAL HOLE	A	2	2,920.00	2,920.00	4/8/2009
NIOBRARA, ORIGINAL HOLE	B	3	6,942.00	6,946.00	10/11/1984
NIOBRARA, ORIGINAL HOLE	B	8	7,050.00	7,067.00	10/11/1984
NIOBRARA, ORIGINAL HOLE	C	6	7,129.00	7,136.00	10/11/1984

Well Name: DAVIS, W. 02-33

VERTICAL - ORIGINAL HOLE, 1/13/2015 8:40:51 AM



Perforation Data						
Zone	Bnch/St g	Entered Shot Total	Top (ftKB)	Btm (ftKB)	Date	
CODELL, ORIGINAL HOLE		44	7,196.00	7,207.00	7/3/2002	
CODELL, ORIGINAL HOLE		40	7,198.00	7,208.00	5/15/1984	
Stimulations & Treatments						
Date	Zone		Primary Job Type			
5/16/1984	CODELL, ORIGINAL HOLE		DRILLING/COMPLETION - ORIGINAL			
Technical Result		Tech Result Details		Tech Result Note		
Comment						
Date	Zone		Primary Job Type			
11/9/1984	NIOBRARA, ORIGINAL HOLE		RECOMPLETION			
Technical Result		Tech Result Details		Tech Result Note		
Comment						
Date	Zone		Primary Job Type			
7/15/2002	CODELL, ORIGINAL HOLE		COMMINGLE ZONES			
Technical Result		Tech Result Details		Tech Result Note		
Comment						
Other In Hole						
Run Date	Des		OD (in)	Top (ftKB)	Btm (ftKB)	
Logs						
Date	Type		Top, MD (ftKB)	Btm, MD (ftKB)		
4/28/1984	COMPENSATED NEUTRON		2,550.0	7,336.0		
4/28/1984	FIL/OMRL		6,800.0	7,338.0		
4/28/1984	INDUCTION		411.0	7,333.0		
5/11/1984	CBL/CCL/GR		6,000.0	7,266.0		
11/5/1984	CALIPER		6,760.0	7,230.0		
11/6/1984	CEMENT BOND		6,700.0	7,234.0		
11/27/1984	TEMPERATURE SURVEY		6,800.0	7,158.0		
4/8/2009	CBL/CCL/GR		2,490.0	6,722.0		
4/14/2009	CBL/CCL/GR		1,470.0	3,027.0		