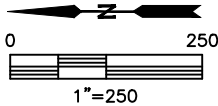
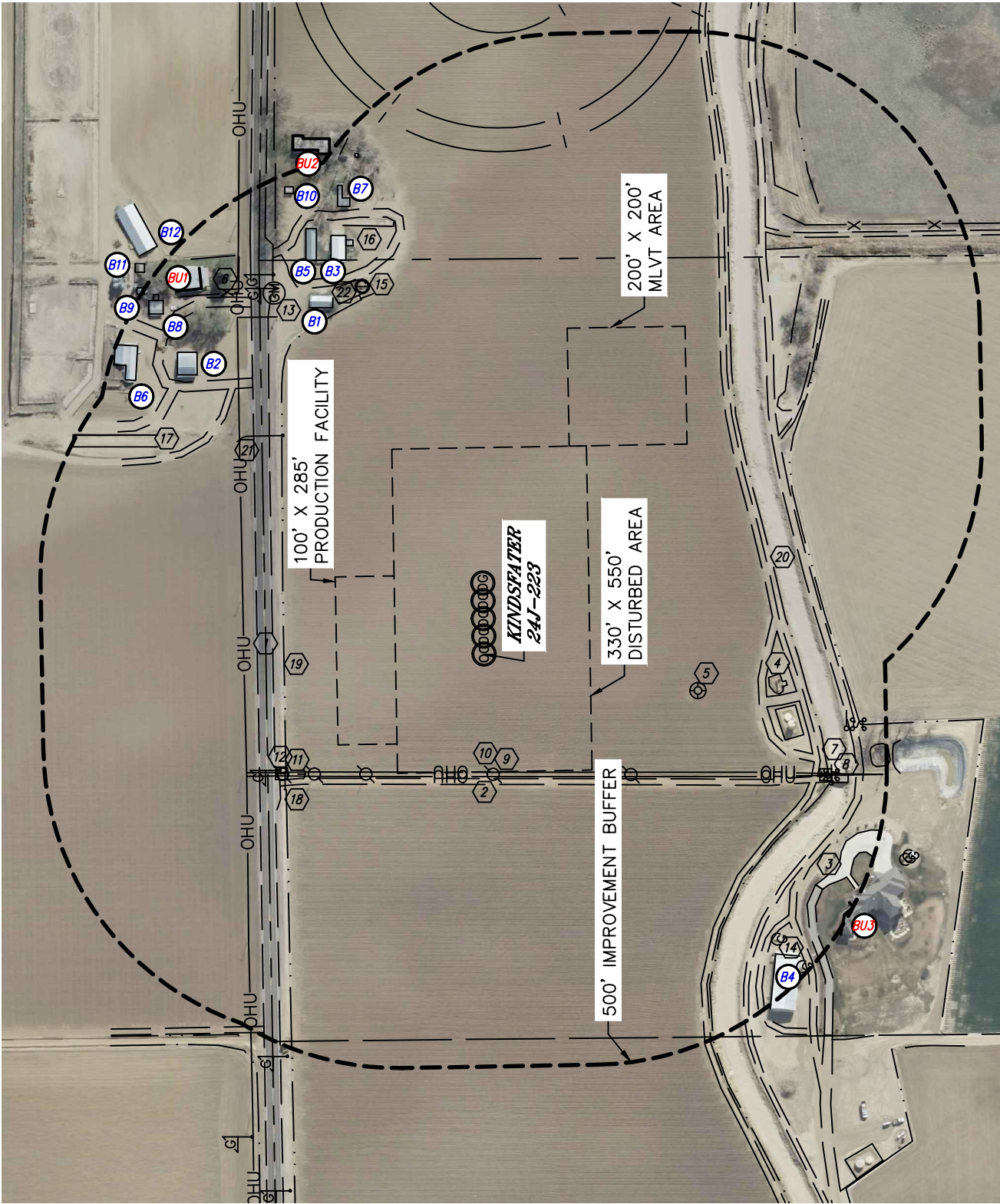




LOCATION DRAWING
KINDSFATER 24JM-HZ PAD

SECTION: 24
TOWNSHIP: 6N
RANGE: 66W





LOCATION DRAWING

KINDSFATER 24JM—HZ PAD

SECTION: 24
TOWNSHIP: 6N
RANGE: 66W

IMPROVEMENTS:
(MEASURED FROM THE PROPOSED KINDSFATER 24J—223 WELL LOCATION)

- BU1** BUILDING UNIT **BU1** 783' NE, **BU2** 888' NE, **BU3** 750' SW
- B1** BUILDING **B1** 640' NE, **B2** 679' NE, **B3** 708' NE, **B4** 710' SW, **B5** 725' NE, **B6** 751' NE, **B7** 792' NE, **B8** 793' NE, **B9** 839' NE, **B10** 845' NE, **B11** 867' NE, **B12** 886' NE
- 1** HIGHWAY 392 358' N
- 2** ACCESS ROAD 211' W, 467' & 675' SW, 493', 559', 618' SE, 598', 674' & 708' NE, 734' NW
- 3** CONCRETE DRIVEWAY 691' SW
- 4** EX. PRODUCTION EQUIPMENT 484' & 503' SW (PDC)
- 5** EX. WELL HEAD 368' SW
- 6** FENCE 742' NE
- 7** GATE 629' & 628' SW
- 8** BRIDGE 624' SW
- 9** OVERHEAD UTILITY LINE 200' & 208' W, 407' N, 671' NE
- 10** UTILITY POLE 205' W, 286', 353' & 398' NW, 322' SW
- 11** TELEPHONE PEDESTAL 398' NW, 615' SW
- 12** GAS MARKER 399' NW, 715' & 736' NE
- 13** GAS METER 708' NE
- 14** PROPANE TANK 694' SW
- 15** DOMESTIC WELL 657' NE
- 16** CONCRETE SLAB 741' NE
- 17** SILAGE PIT 657' NE
- 18** CULVERT 393' NW, 504' & 638' NE
- 19** CONCRETE DITCH 339' N, 576' SE
- 20** CANAL 512' SE
- 21** DITCH 546', 638', 797' & 804' NE, 651', 833' SE
- 22** POND 643' NE

NEAREST CULTURAL ITEMS			
MEASURED FROM THE NEAREST	PROPOSED WELL HEAD	EDGE OF PRODUCTION FACILITY	EDGE OF MLVT AREA
BUILDING	±532' NE	±456' E	±389' NE
BUILDING UNIT	±691' NE	±541' NE	±500' NE
HIGH OCCUPANCY BUILDING UNIT	5280'+	5280'+	5280'+
DESIGNATED OUTSIDE ACTIVITY AREA	5280'+	5280'+	5280'+
PUBLIC ROAD (HIGHWAY 392)	±358' N	±108' N	±507' N
ABOVEGROUND UTILITY	±200' W	±46' W	±492' NE
RAILROAD	5280'+	5280'+	5280'+
PROPERTY LINE	±370' N	±120' N	±521' N

SHEET 2 OF 2

DATE: 10/28/2014
PROJECT#: 2014003