

Company: Omimex Petroleum Inc

Well: Sagehorn 14 34 6 45

Field: Ballyneal

County: Phillips

State: Colorado

CEMENT BOND

GAMMA RAY

CASING COLLAR LOG

County: Phillips

Field: Ballyneal

Location: 733' FSL & 1899" FWL

Well: Sagehorn 14 34 6 45

Company: Omimex Petroleum Inc

LOCATION		Elev.:	
733' FSL & 1899" FWL		K.B.	3871.00 ft
		G.L.	3865.00 ft
		D.F.	3870.00 ft
Permanent Datum:	GROUND LEVEL	Elev.: 3865.00 ft	
Log Measured From:	KELLY BUSHING	6.00 ft	above Perm. Datum
Drilling Measured From:	KELLY BUSHING		
API Serial No.	Section	Township	Range
05-095-0	34	6N	45W

Run 1		Run 2		Run 3	
Oil Density					
Water Salinity					
Gas Gravity					
Bo					
Bw					
1/Bg					
Bubble Point Pressure					
Bubble Point Temperature					
Solution GOR					
Maximum Deviation					
CEMENTING DATA					
Primary/Squeeze		Primary			
Casing String No					
Lead Cement Type					
Volume					
Density					
Water Loss					
Additives					
Tail Cement Type					
Volume					
Density					
Water Loss					
Additives					
Expected Cement Top					

Logging Date	16-Dec-2014				
--------------	-------------	--	--	--	--

Run Number	1				
------------	---	--	--	--	--

Depth Driller	2698 ft				
---------------	---------	--	--	--	--

Schlumberger Depth	2610 ft				
--------------------	---------	--	--	--	--

Bottom Log Interval	2595 ft				
---------------------	---------	--	--	--	--

Top Log Interval	0 ft				
------------------	------	--	--	--	--

Casing Fluid Type	WATER				
-------------------	-------	--	--	--	--

Salinity					
----------	--	--	--	--	--

Density	8.4 lbm/gal				
---------	-------------	--	--	--	--

Fluid Level					
-------------	--	--	--	--	--

BIT/CASING/TUBING STRING					
--------------------------	--	--	--	--	--

Bit Size	6.250 in				
----------	----------	--	--	--	--

From					
------	--	--	--	--	--

To					
----	--	--	--	--	--

Casing/Tubing Size	4.500 in				
--------------------	----------	--	--	--	--

Weight	10.5 lbm/ft				
--------	-------------	--	--	--	--

Grade					
-------	--	--	--	--	--

From					
------	--	--	--	--	--

To					
----	--	--	--	--	--

Maximum Recorded Temperatures	118 degF				
-------------------------------	----------	--	--	--	--

Logger On Bottom	16-Dec-2014	Time	11:30		
------------------	-------------	------	-------	--	--

Unit Number	354	Location	FORT MORGAN		
-------------	-----	----------	-------------	--	--

Recorded By	C. Onigkeit				
-------------	-------------	--	--	--	--

Witnessed By	JEREMY FISHER				
--------------	---------------	--	--	--	--

Logging Date					
--------------	--	--	--	--	--

Run Number					
------------	--	--	--	--	--

Depth Driller					
---------------	--	--	--	--	--

Schlumberger Depth					
--------------------	--	--	--	--	--

Bottom Log Interval					
---------------------	--	--	--	--	--

Top Log Interval					
------------------	--	--	--	--	--

Casing Fluid Type					
-------------------	--	--	--	--	--

Salinity					
----------	--	--	--	--	--

Density					
---------	--	--	--	--	--

Fluid Level					
-------------	--	--	--	--	--

BIT/CASING/TUBING STRING					
--------------------------	--	--	--	--	--

Bit Size					
----------	--	--	--	--	--

From					
------	--	--	--	--	--

To					
----	--	--	--	--	--

Casing/Tubing Size					
--------------------	--	--	--	--	--

Weight					
--------	--	--	--	--	--

Grade					
-------	--	--	--	--	--

From					
------	--	--	--	--	--

To					
----	--	--	--	--	--

Maximum Recorded Temperatures					
-------------------------------	--	--	--	--	--

Logger On Bottom		Time			
------------------	--	------	--	--	--

Unit Number		Location			
-------------	--	----------	--	--	--

Recorded By					
-------------	--	--	--	--	--

Witnessed By					
--------------	--	--	--	--	--

## DEPTH SUMMARY LISTING

Date Created: 18-DEC-2014 10:31:50

## Depth System Equipment

Depth Measuring Device		Tension Device		Logging Cable	
Type:	IDW-B	Type:	CMTD-B/A	Type:	1-25ZT
Serial Number:	6216	Serial Number:	1163	Serial Number:	354
Calibration Date:	21-JAN-2014	Calibration Date:	31-OCT-2014	Length:	16000 FT
Calibrator Serial Number:	1	Calibrator Serial Number:	1	Conveyance Method:	Wireline
Calibration Cable Type:	1-25ZT	Number of Calibration Points:	0	Rig Type:	LAND
Wheel Correction 1:	-5				
Wheel Correction 2:	-5				

## Depth Control Parameters

Log Sequence:	First Log In the Well
Rig Up Length At Surface:	0.00 FT
Rig Up Length At Bottom:	0.00 FT
Rig Up Length Correction:	0.00 FT
Stretch Correction:	
Tool Zero Check At Surface:	

### Depth Control Remarks

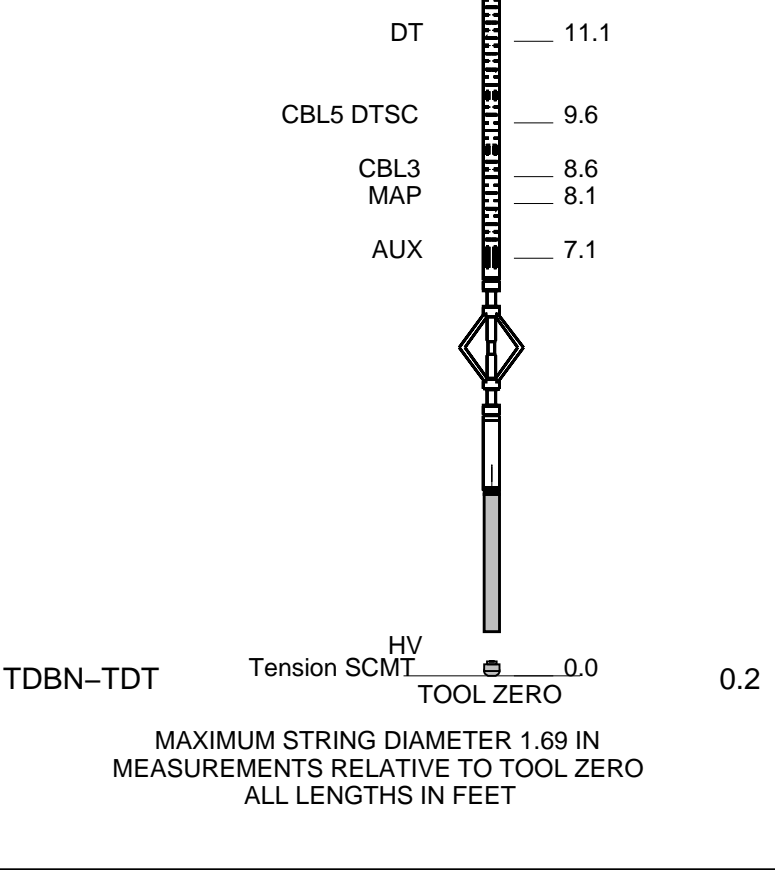
1. IDW WHEELS USED AS PRIMARY DEPTH CONTROL
2. DRUM COUNTER USED AS SECONDARY DEPTH CONTROL
- 3.
- 4.
- 5.
- 6.

## DISCLAIMER

THE USE OF AND RELIANCE UPON THIS RECORDED-DATA BY THE HEREIN NAMED COMPANY (AND ANY OF ITS AFFILIATES, PARTNERS, REPRESENTATIVES, AGENTS, CONSULTANTS AND EMPLOYEES) IS SUBJECT TO THE TERMS AND CONDITIONS AGREED UPON BETWEEN SCHLUMBERGER AND THE COMPANY, INCLUDING: (a) RESTRICTIONS ON USE OF THE RECORDED-DATA; (b) DISCLAIMERS AND WAIVERS OF WARRANTIES AND REPRESENTATIONS REGARDING COMPANY'S USE OF AND RELIANCE UPON THE RECORDED-DATA; AND (c) CUSTOMER'S FULL AND SOLE RESPONSIBILITY FOR ANY INFERENCE DRAWN OR DECISION MADE IN CONNECTION WITH THE USE OF THIS RECORDED-DATA.

OTHER SERVICES1	OTHER SERVICES2
OS1: PERF	OS1:
OS2:	OS2:
OS3:	OS3:
OS4:	OS4:
OS5:	OS5:
REMARKS: RUN NUMBER 1	REMARKS: RUN NUMBER 2
CORRELATED TO TRIPLE COMBO RAN	
ON 06-DEC-2014 BY SCHLUMBERGER	

REPEAT AND MAIN PASS RAN					
UNDER 0 PSI					
CRW: GOBLE, HOFFMAN					
THANK YOU					
RUN 1			RUN 2		
SERVICE ORDER #: PROGRAM VERSION: 19C0-187 FLUID LEVEL:			SERVICE ORDER #: PROGRAM VERSION: FLUID LEVEL:		
LOGGED INTERVAL	START	STOP	LOGGED INTERVAL	START	STOP
EQUIPMENT DESCRIPTION					
RUN 1			RUN 2		
SURFACE EQUIPMENT					
WITM-A PSC_16MHZ					
DOWNHOLE EQUIPMENT					
MH-22 MH-22			30.3		
AH-38 Detail MT TelStatus CTEM			28.7		
PSPT PSC-A PSPT-A 1765 PSTC-A PBMS-A 10k_Sapphire_Mano RTD_Thermometer GR CCL PBMS			28.4		
GR			24.7		
Well_Temp Manometer CCL PBMS PSTC			21.7 21.5 20.9 20.2		
SCMT-CB SCMC-CA SECH-CA CMIR-AG SCMS-CB 8160 SCMX-CA			20.2		



# MAIN PASS

MAXIS Field Log

Company: Omimex Petroleum Inc Well: Sagehorn 14-34-6-4

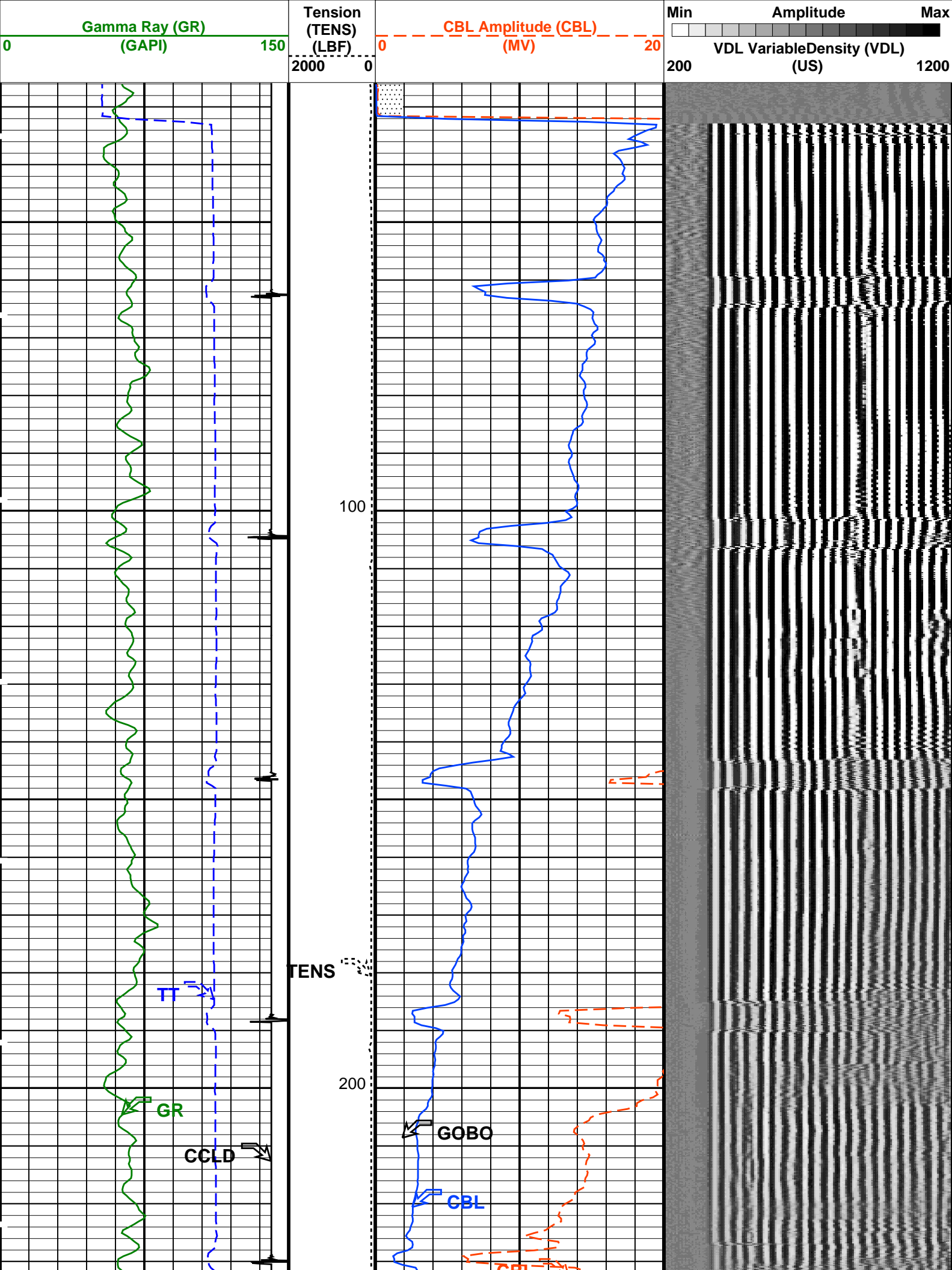
Input DLIS Files						
DEFAULT	SCMT_PSP_005LUP	FN:4	PRODUCER	16-Dec-2014 11:25	2654.0 FT	25.5 FT
Output DLIS Files						
DEFAULT	SCMT_PSP_006PUP	FN:5	PRODUCER	16-Dec-2014 13:00	2654.0 FT	25.5 FT

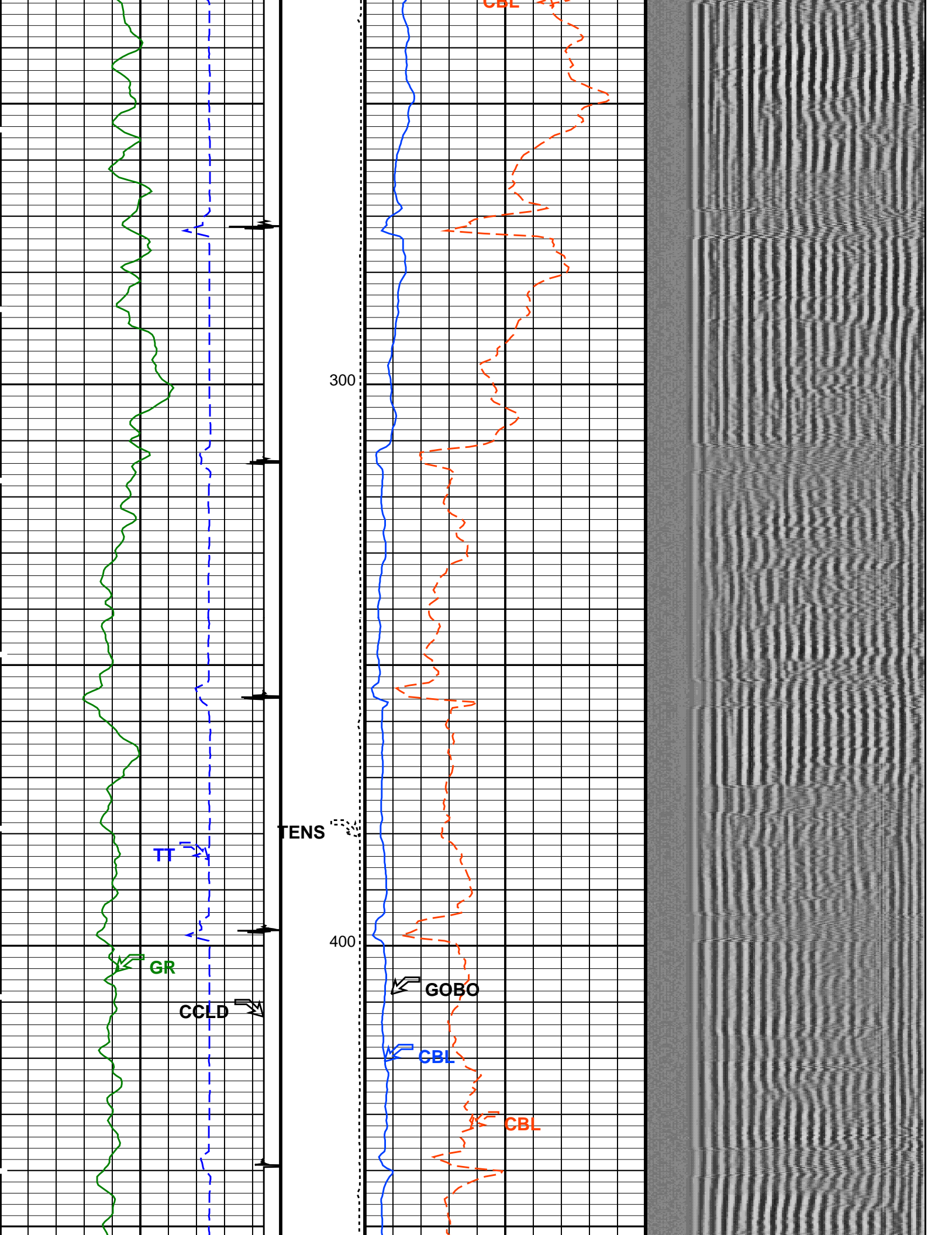
OP System Version: 19C0-187			
SCMT-CB	19C0-187	PSPT	19C0-187

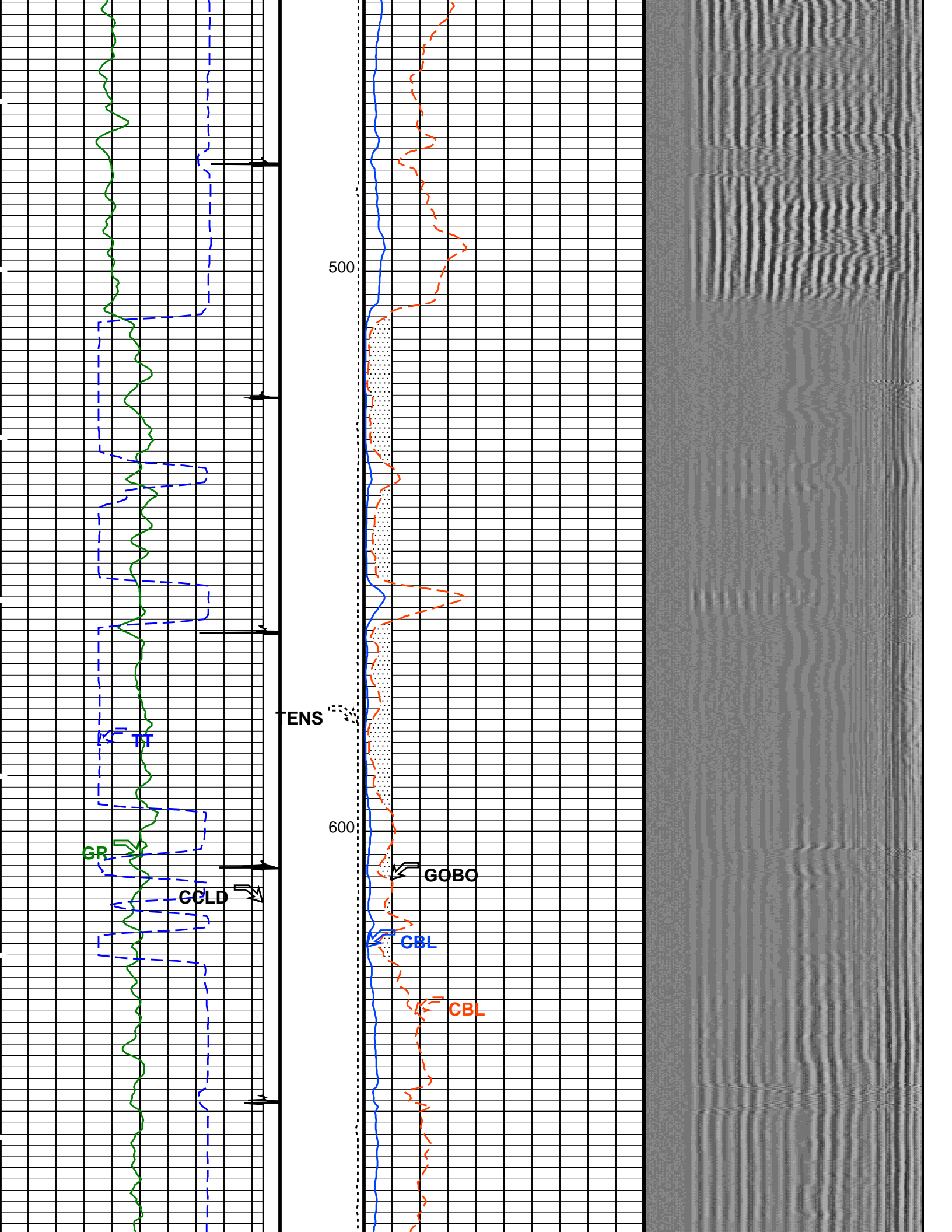
## PIP SUMMARY

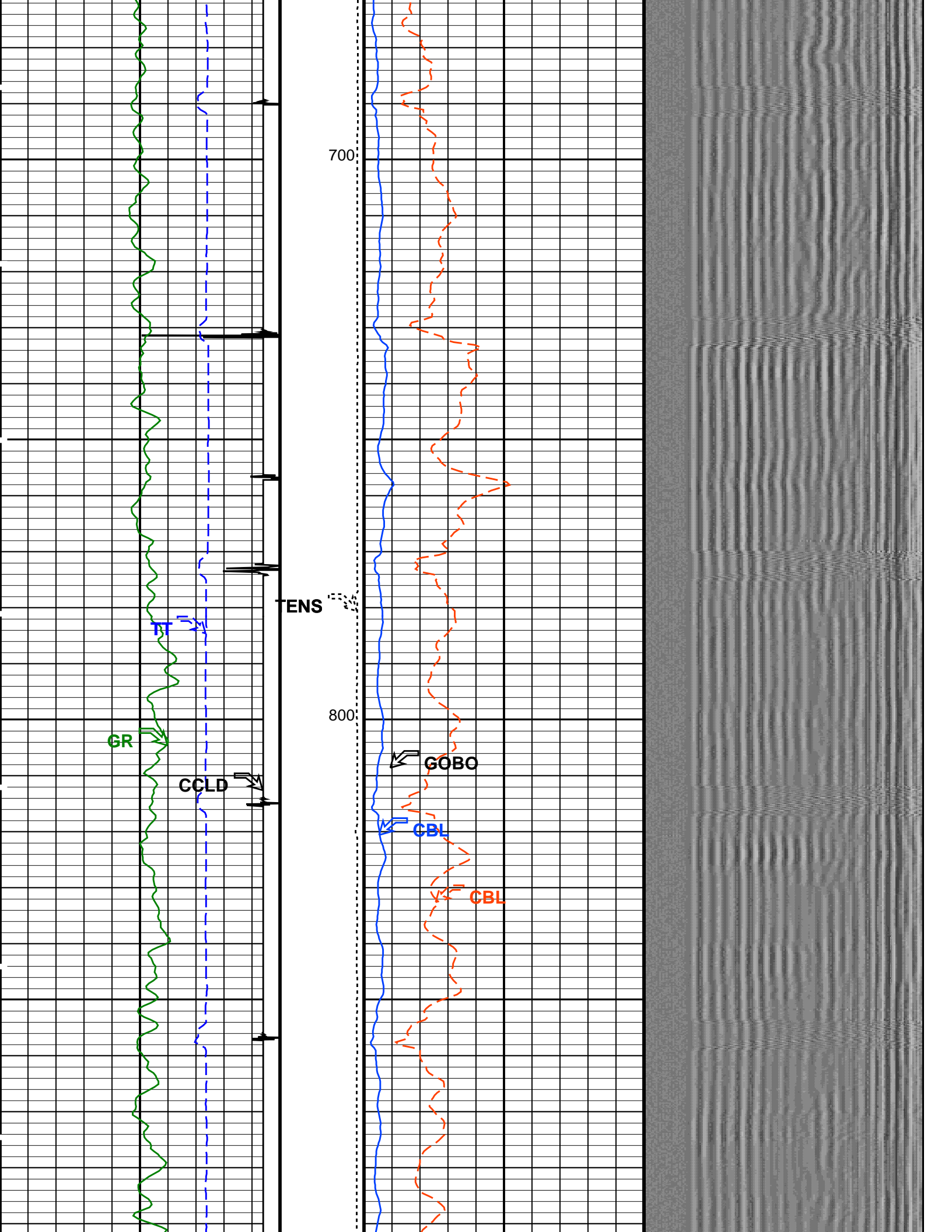
<div>Time Mark Every 60 S</div>	Discriminated CCL (CCLD)	<div>GOOD BOND From ACBL to GOBO</div>
	-3.5 (V) 0.5	
	COLLARS From CCLD to T1	
Transit Time (TT)		CBL Amplitude (CBL)
400 (US) 200		0 (MV) 100



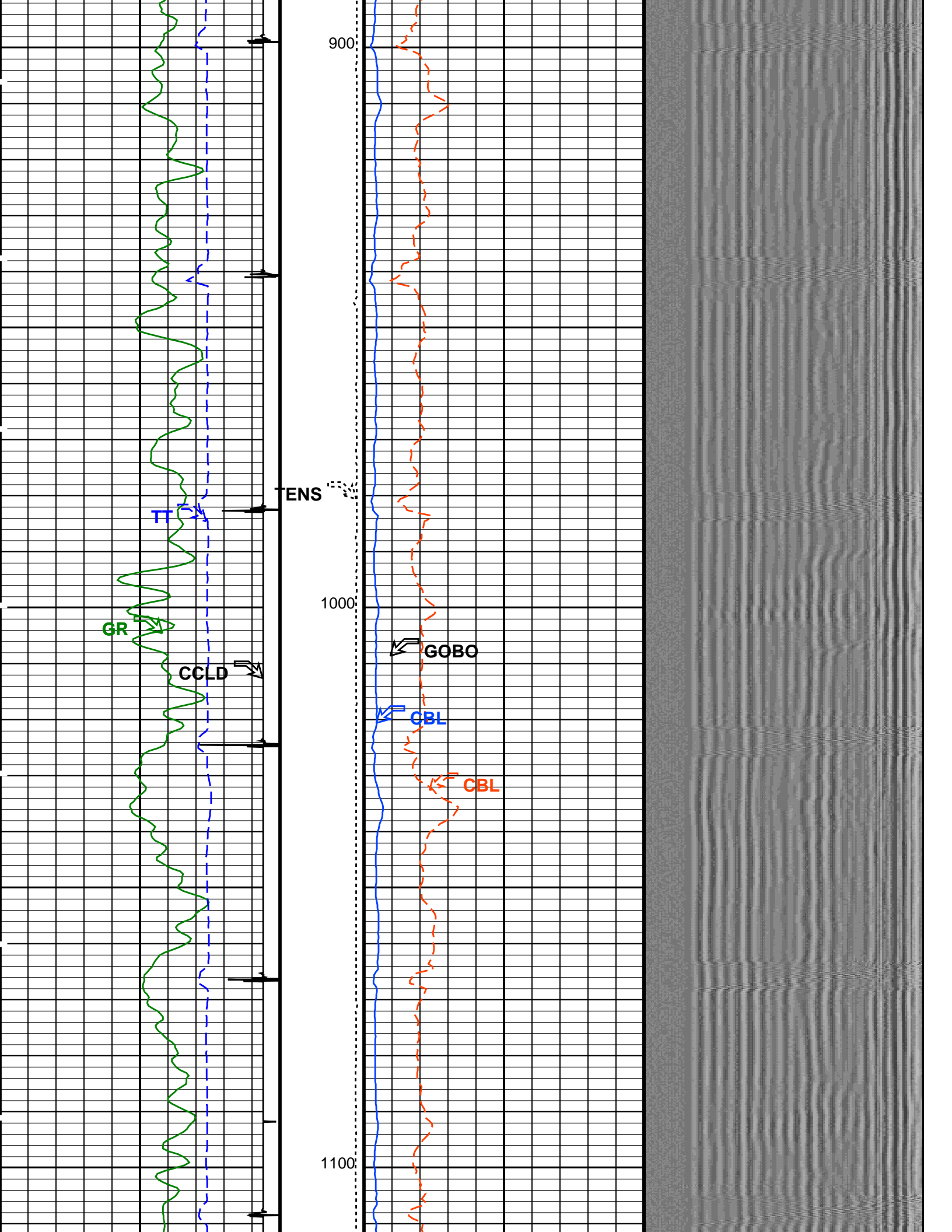


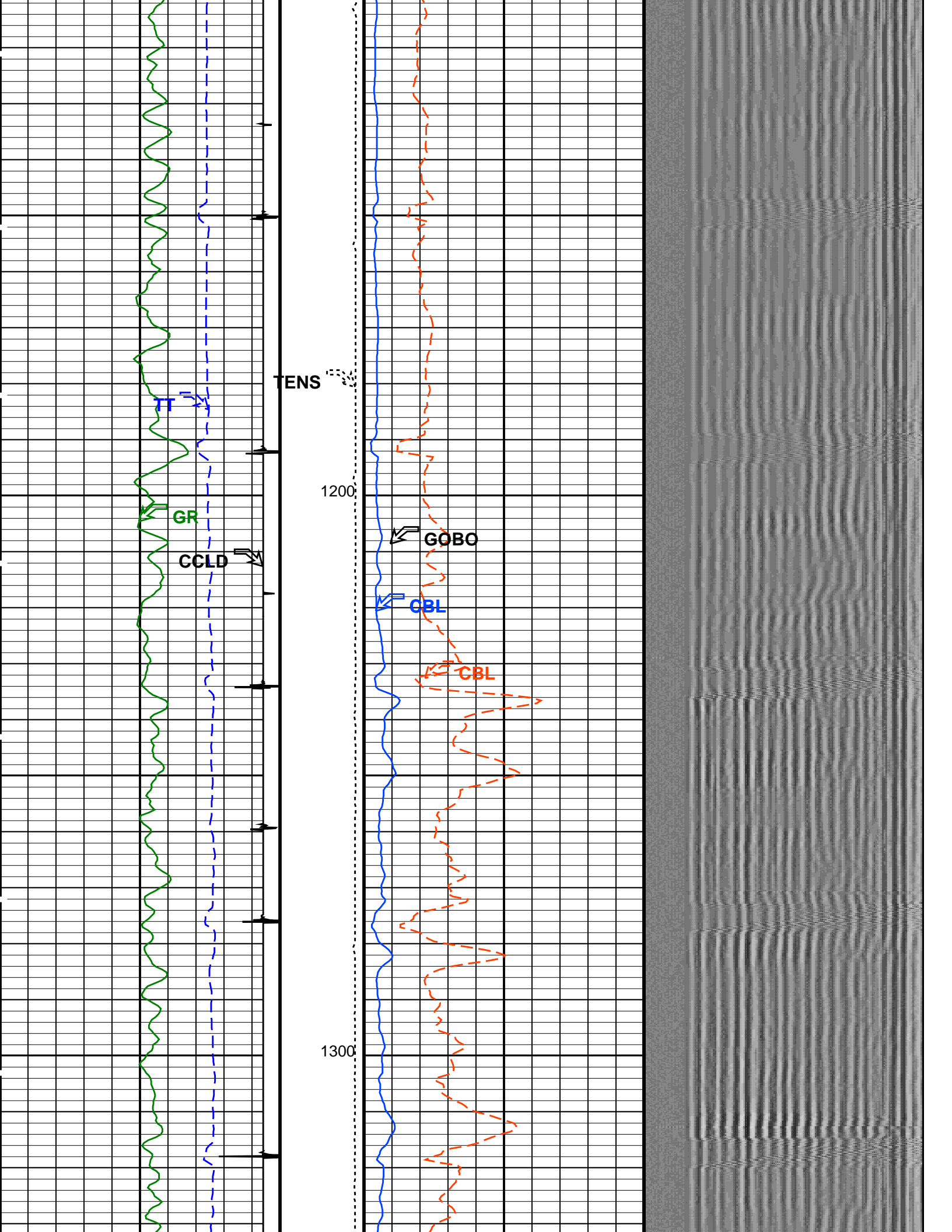


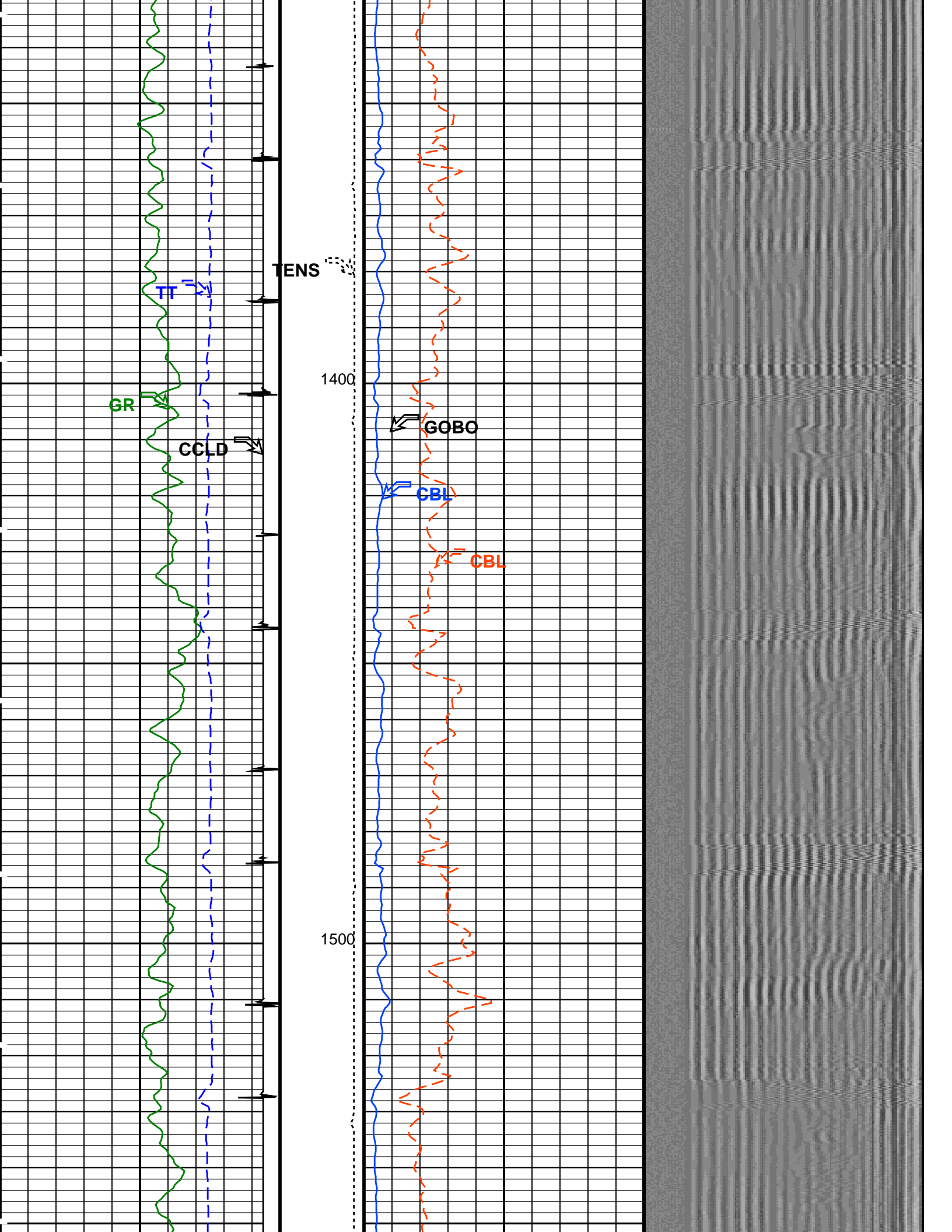


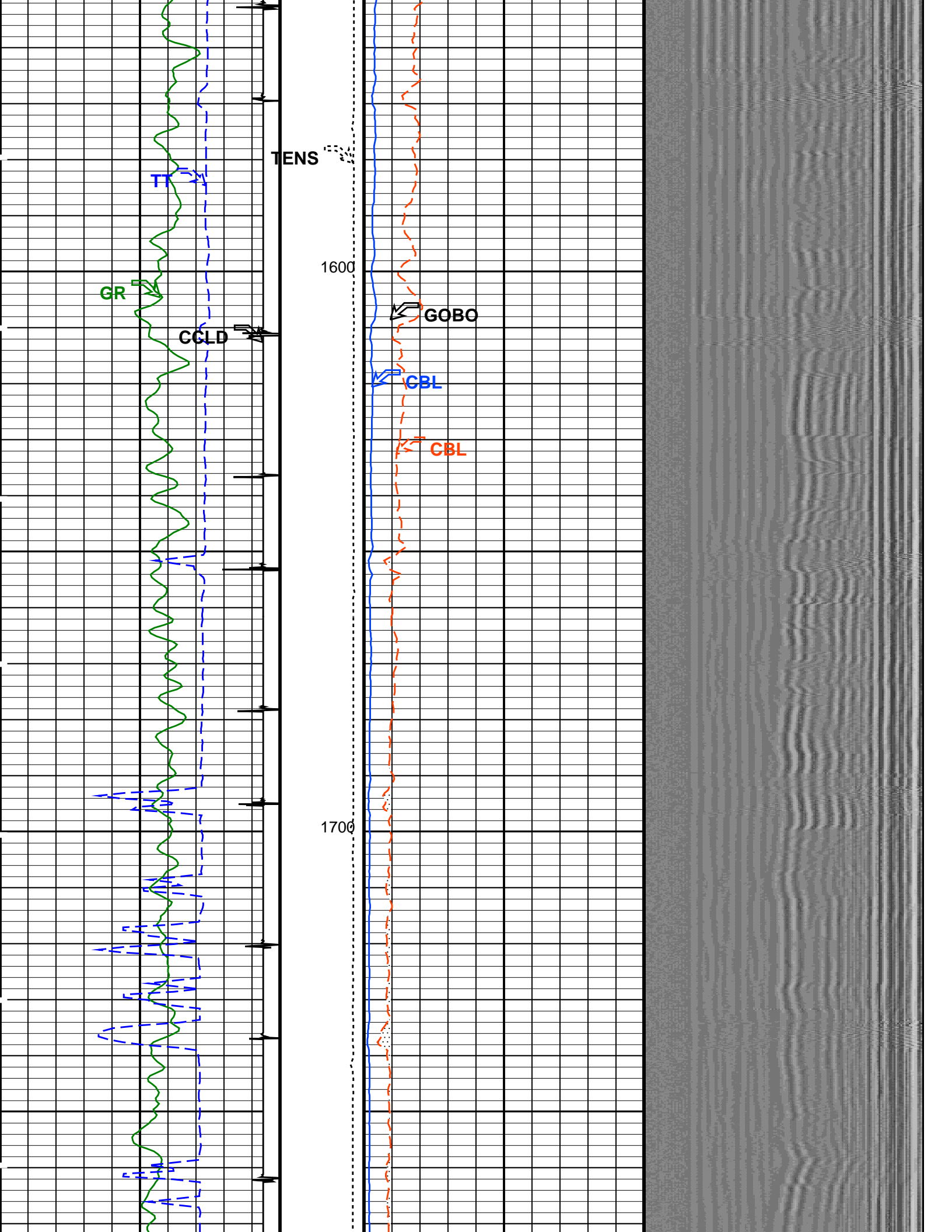




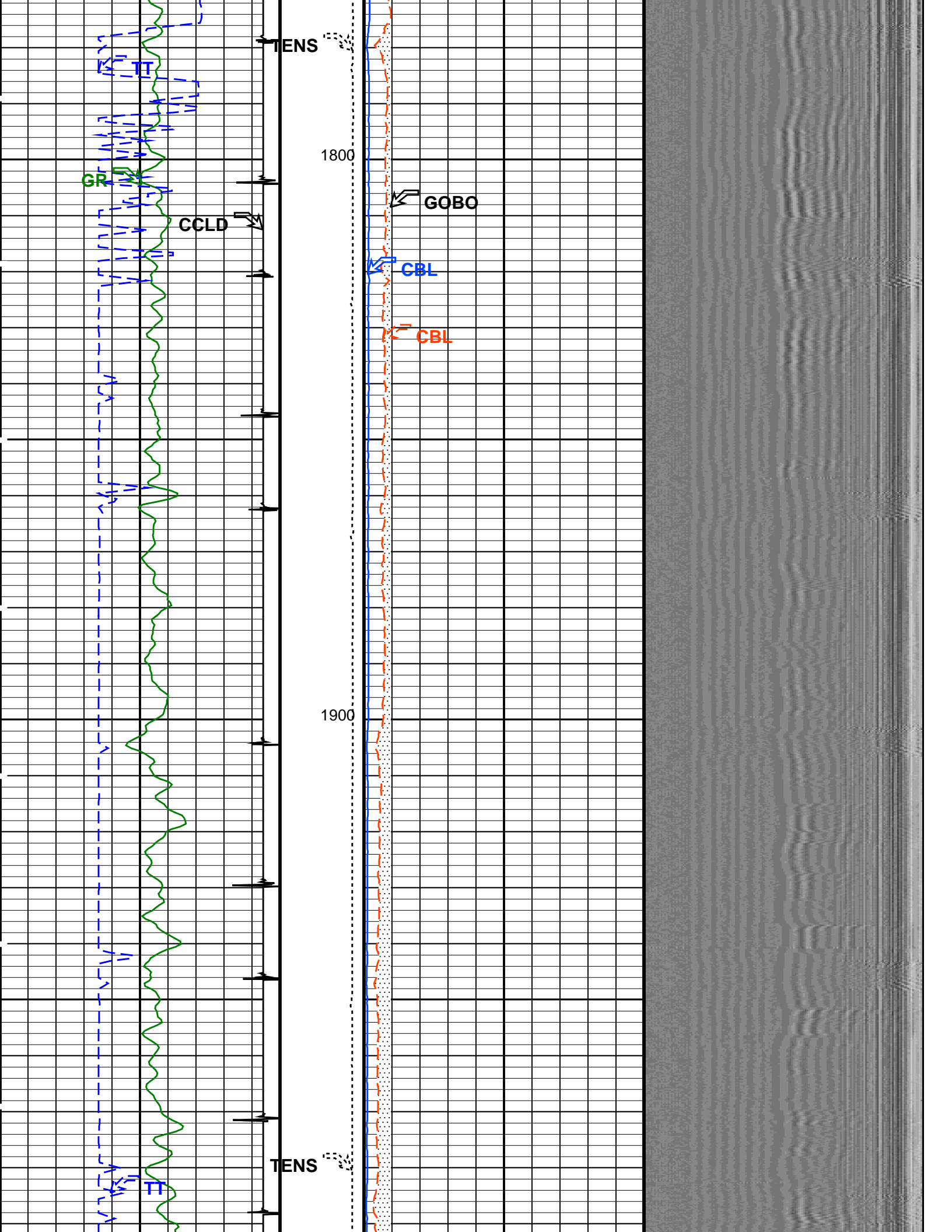


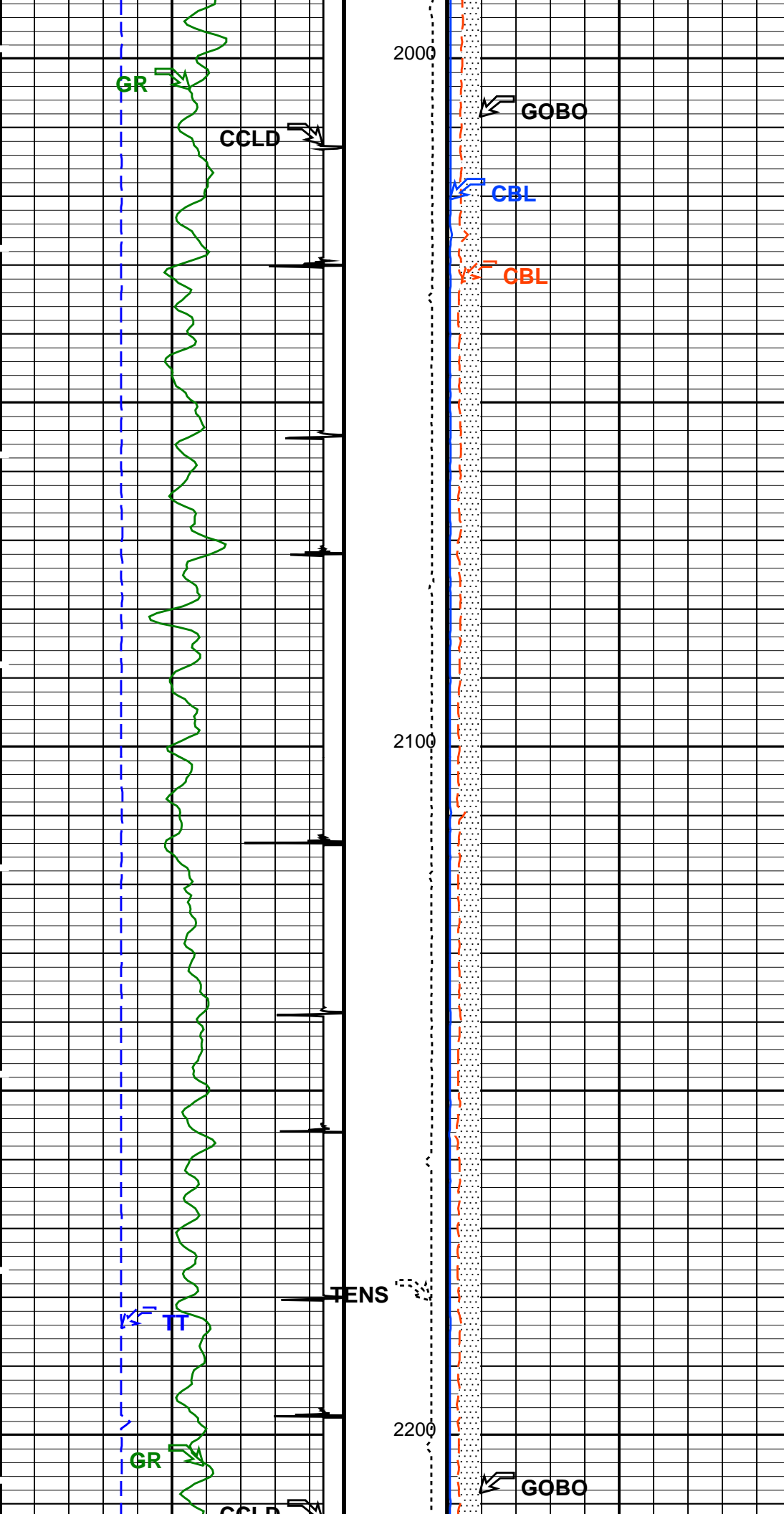


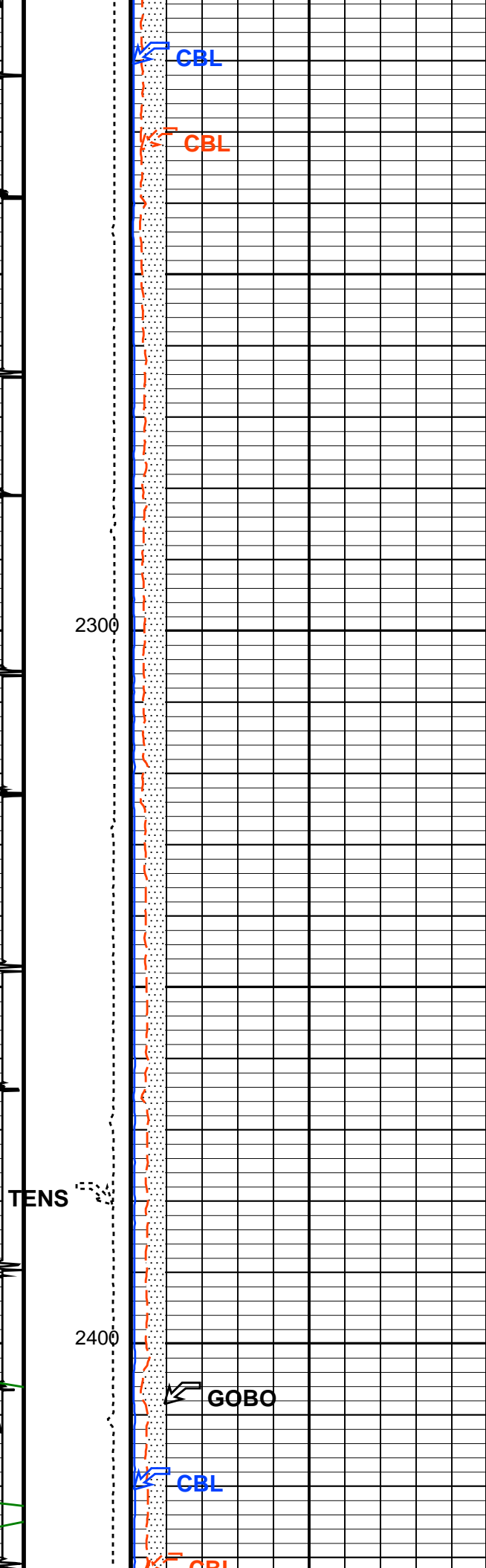
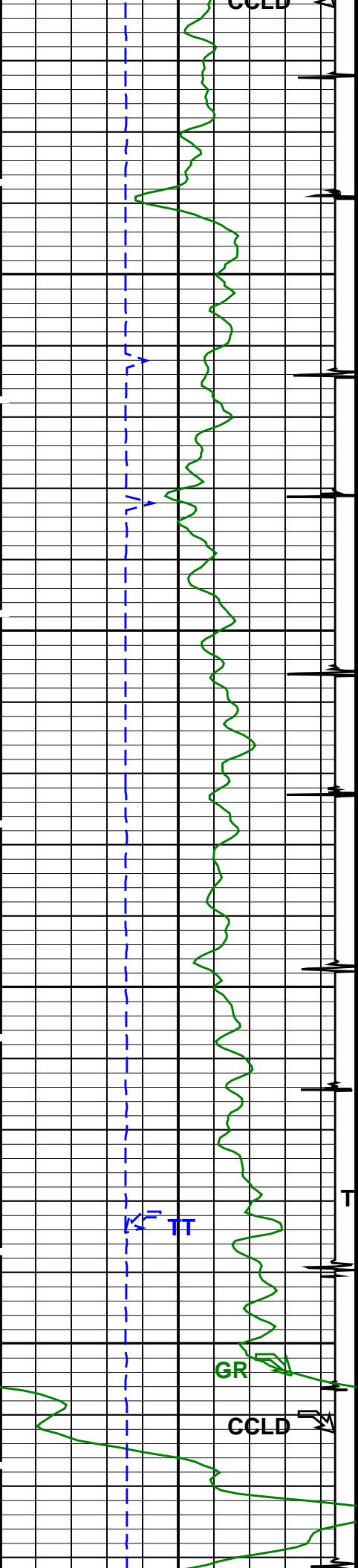


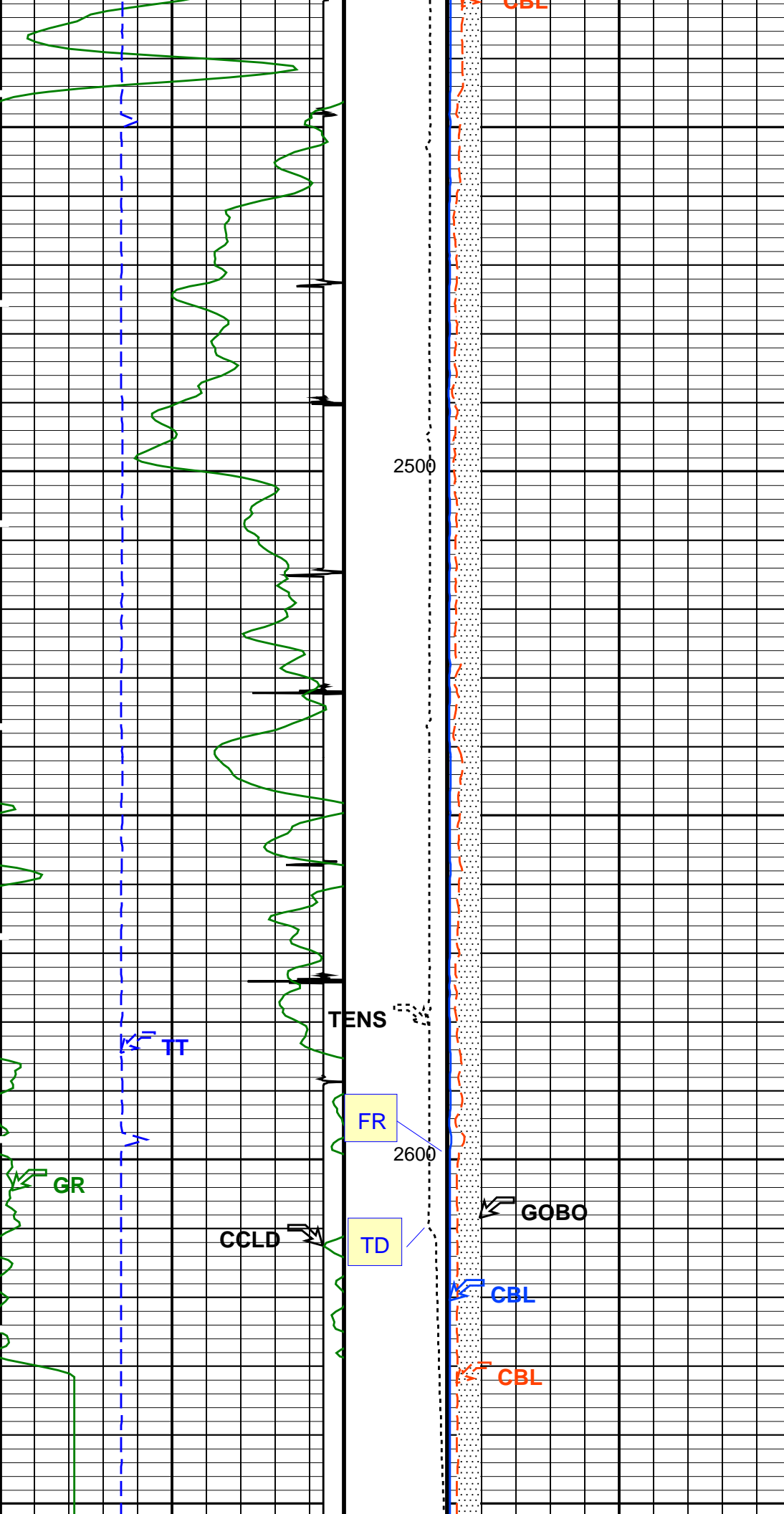














<p><b>Gamma Ray (GR)</b> (GAPI)</p> <p>0 150</p>		<p><b>Tension (TENS)</b> (LBF)</p> <p>2000 0</p>	<p><b>CBL Amplitude (CBL)</b> (MV)</p> <p>0 20</p>		<p><b>Min</b> <b>Amplitude</b> <b>Max</b></p> <p>200 1200</p> <p><b>VDL Variable Density (VDL)</b> (US)</p>
<p><b>Transit Time (TT)</b> (US)</p> <p>400 200</p>			<p><b>CBL Amplitude (CBL)</b> (MV)</p> <p>0 100</p>		
<p><b>COLLARS</b> From CCLD to T1</p> <p><b>Discriminated CCL (CCLD)</b></p> <p>-3.5 (V) 0.5</p>		<p><b>GOOD BOND</b> From ACBL to GOBO</p>			

## Parameters

Format: CBL\_VDL    Vertical Scale: 5" per 100'    Graphics File Created: 16-Dec-2014 13:00

**OP System Version: 19C0-187**

## MAXIS Field Log

Company: Omimex Petroleum Inc

Well: Sagehorn 14-34-6-4

## Input DLIS Files

DEFAULT	SCMT_PSP_004LUP	FN:3	PRODUCER	16-Dec-2014 11:08	2661.5 FT	2395.1 FT
---------	-----------------	------	----------	-------------------	-----------	-----------

## Output DLIS Files

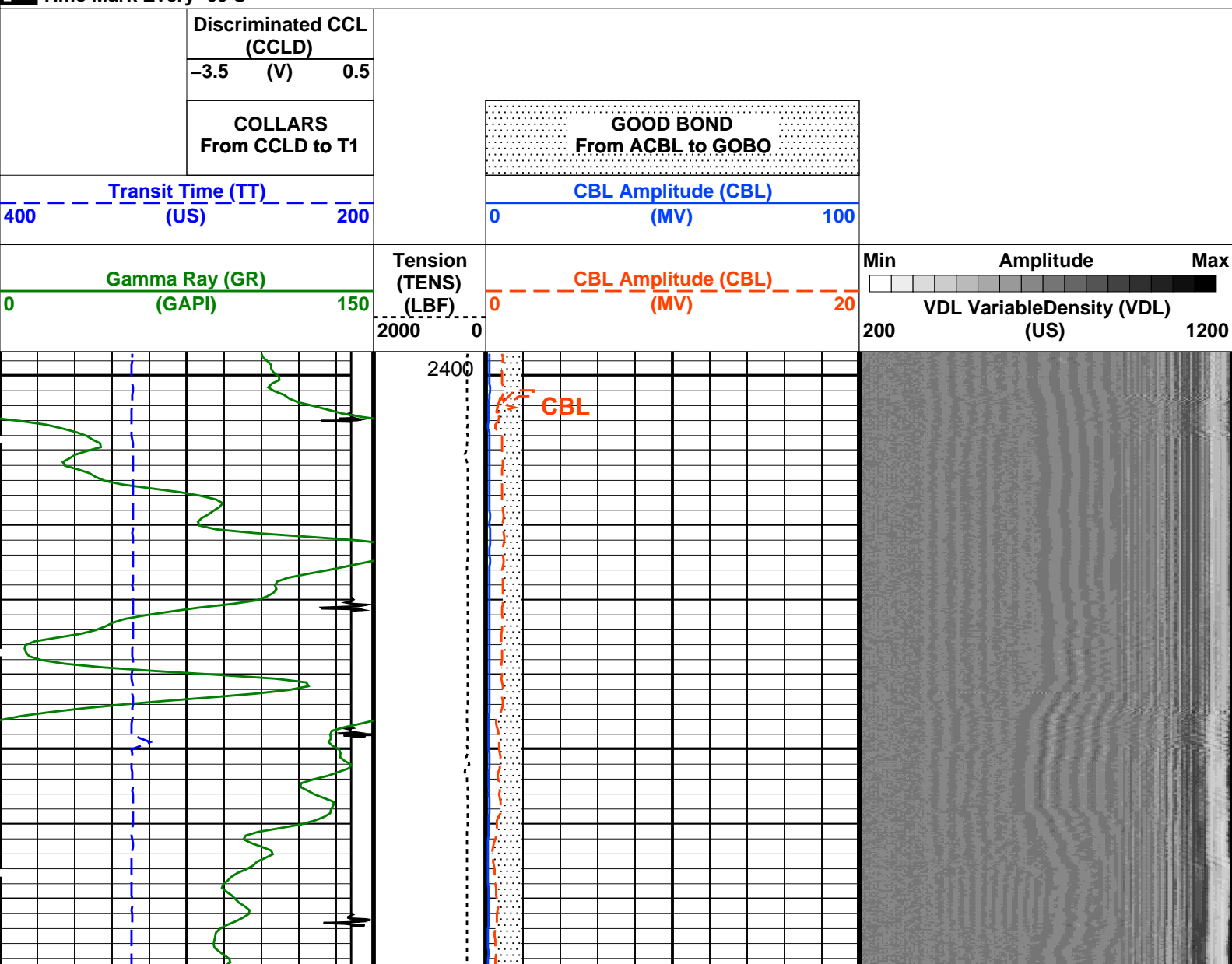
DEFAULT	SCMT_PSP_007PUP	FN:6	PRODUCER	16-Dec-2014 13:10	2662.5 FT	2396.5 FT
---------	-----------------	------	----------	-------------------	-----------	-----------

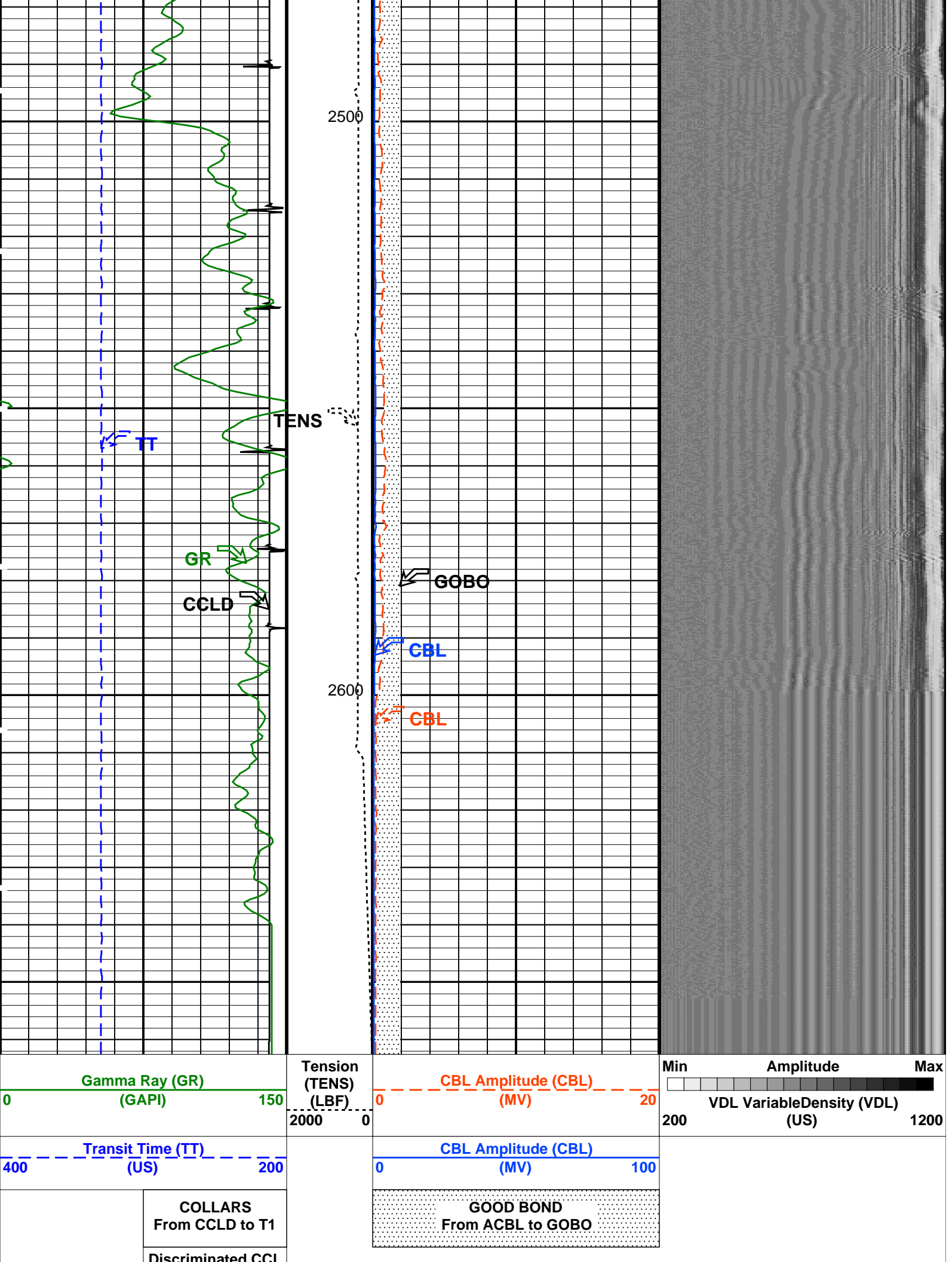
## OP System Version: 19C0-187

SCMT-CB	19C0-187	PSPT	19C0-187
---------	----------	------	----------

## PIP SUMMARY

Time Mark Every 60 S





Discriminated CCLD	(CCLD)
-3.5	(V) 0.5

## PIP SUMMARY

Time Mark Every 60 S

### Parameters

DLIS Name	Description	Value
SCMT-CB: Slim Cement Mapping Tool, 1-11/16 OD		
BILI	Bond Index Level for Zone Isolation	0.8
CB3D	SCMT CBL 3 ft Peak Detection Mode	PEAK
CB3G	SCMT CBL 3 ft Peak Detection T0_Delay and Noise Gate	229.263 US
CB3T	SCMT CBL 3 ft Fixed Threshold Level	20 MV
CB5D	SCMT CBL 5 ft Peak Detection Mode	PEAK
CB5G	SCMT CBL 5 ft Peak Detection T0_Delay and Noise Gate	343.263 US
CB5T	SCMT CBL 5 ft Fixed Threshold Level	20 MV
CBLG	CBL Gate Width	40 US
CBRA	CBL LQC Reference Amplitude in Free Pipe	79 MV
CMCF	CBL Cement Type Compensation Factor	1
CMTC	SCMT Slow Channel Multiplexer Mode	SCAN
CMTM	SCMT Operating Mode	LOG
CSCS	SCMT Slow Channel Index	VCC
CTHI	Casing Thickness	0.229988 IN
DTF	Delta-T Fluid	204.5 US/F
FATT	Acoustic Attenuation due to Fluid	0 DB/F
FCF	CBL Fluid Compensation Factor	1
GOBO	Good Bond	0.935443 MV
MAPD	SCMT MAP Peak Detection Mode	PEAK
MAPG	SCMT MAP Peak Detection T0_Delay and Noise Gate	172.263 US
MAPT	SCMT MAP Fixed Threshold Level	30 MV
MATT	Maximum Attenuation	18.4392 DB/F
MCCF	MAP Cement Type Compensation Factor	1
MCI	Minimum Cemented Interval for Isolation	1.25 FT
MMSA	MAP Minimum Sonic Amplitude	2.90666 MV
MSA	Minimum Sonic Amplitude	0.308578 MV
PEDE	Peak Detection On/Off Switch in Playback	OFF
VDLG	VDL Manual Gain	5
ZCMT	Acoustic Impedance of Cement	6.8 MRAY
System and Miscellaneous		
CSIZ	Current Casing Size	4.500 IN
CWEI	Casing Weight	10.50 LB/F
DO	Depth Offset for Playback	1.0 FT
PP	Playback Processing	NORMAL
TD	Total Depth	20000 FT

Format: CBL\_VDL Vertical Scale: 5" per 100' Graphics File Created: 16-Dec-2014 13:10

### OP System Version: 19C0-187

SCMT-CB 19C0-187 PSPT 19C0-187

#### Input DLIS Files

DEFAULT SCMT\_PSP\_004LUP FN:3 PRODUCER 16-Dec-2014 11:08 2661.5 FT 2395.1 FT

#### Output DLIS Files

DEFAULT SCMT\_PSP\_007PUP FN:6 PRODUCER 16-Dec-2014 13:10

Company: Omimex Petroleum Inc

**Schlumberger**

Well: Sagehorn 14 34 6 45

Field: Ballyneal

County: Phillips

State: Colorado

CEMENT BOND

GAMMA RAY

CASING COLLAR LOG



