



Company : Extraction Oil & Gas
Well : Diamond Valley East #13
Interval : 5004.00 - 17122.00 feet
Created : 29/Nov/2014 8:37:12 AM

INTEQ

Gamma Ray Apparent 1.0 ft Avg GRAX

0 150

API

Rate of Penetration 3.0 ft Avg ROPAVG3

1000 0

ft/hr

MD feet 1:600

Res PD LS 2MHz Corr RPCHX

0.1 100

ohm.m

Res AT LS 400kHz Corr RACLX

0.1 100

ohm.m

Neutron Porosity NPSX

30 0

pu

DRHX

-0.25 0.25

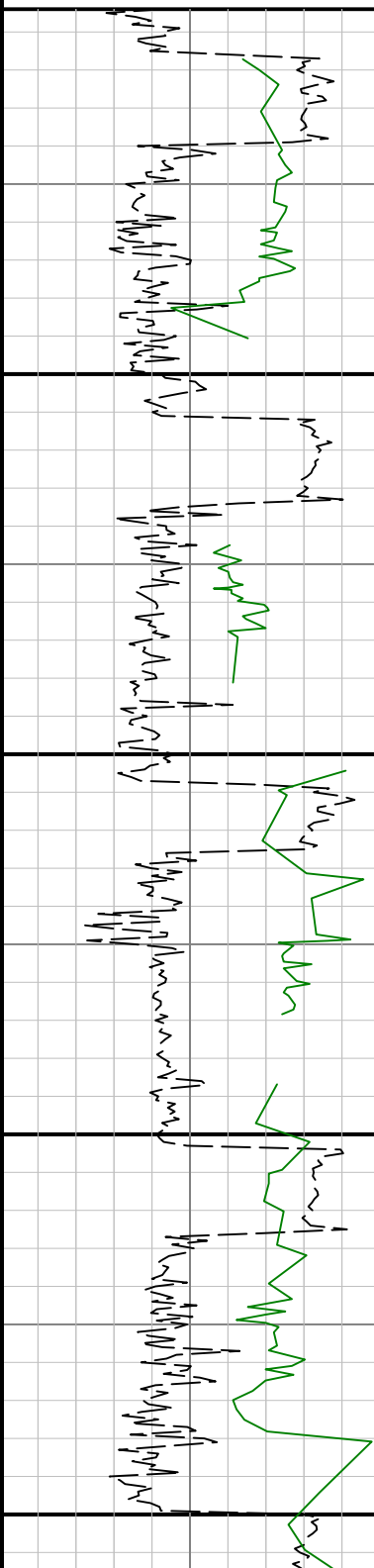
g/cc

Density Porosity DPSX

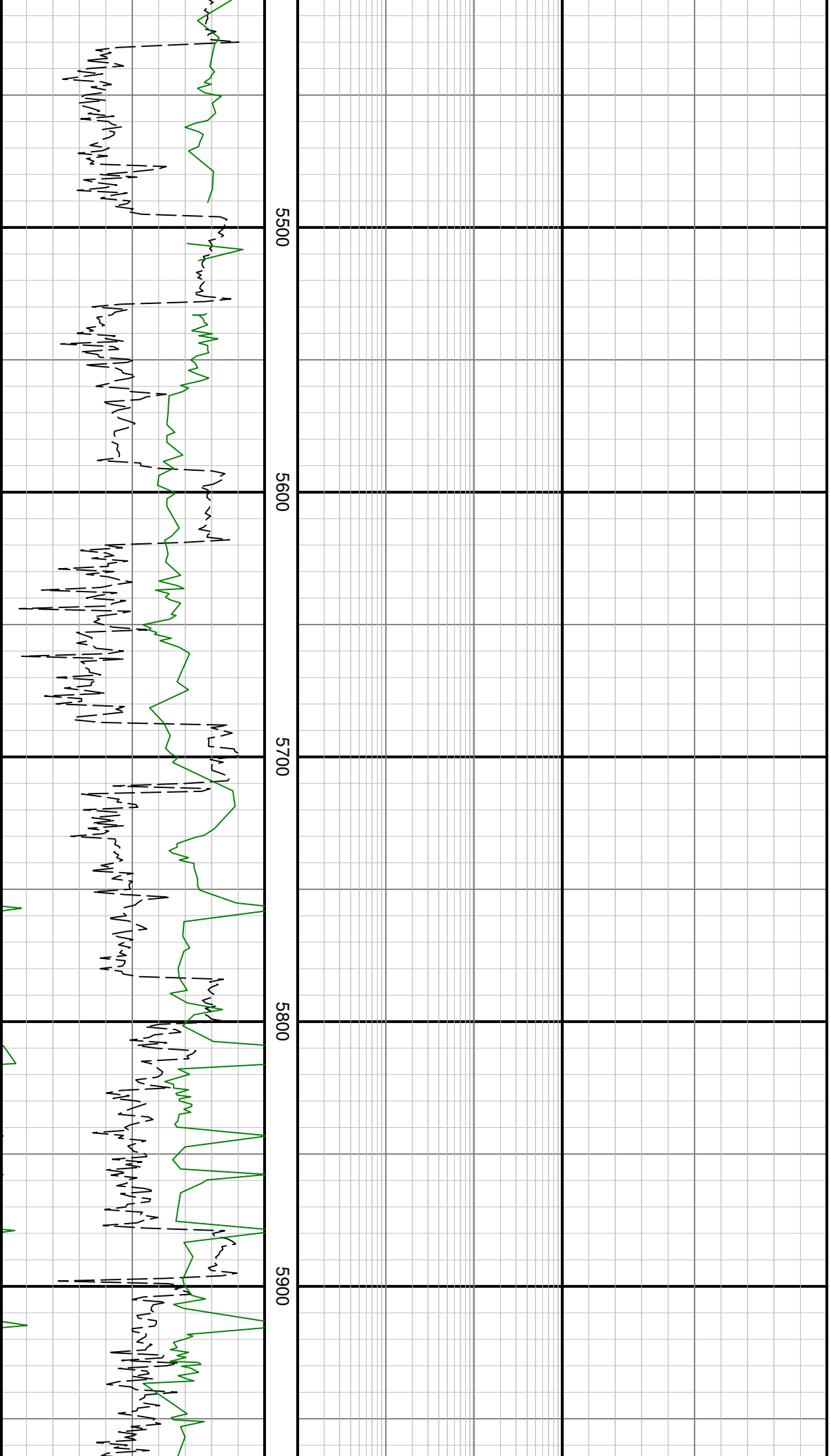
30 0

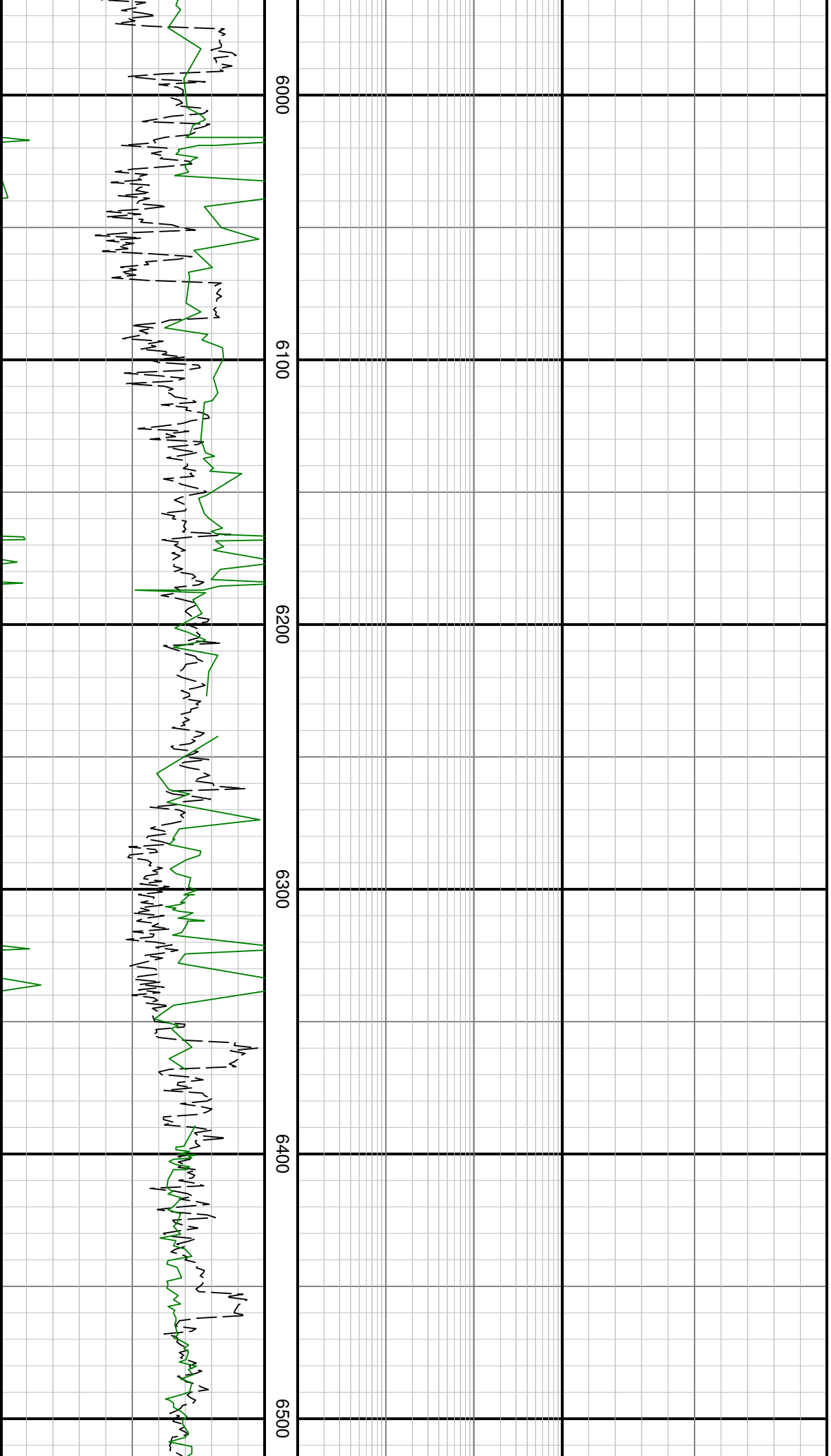
pu

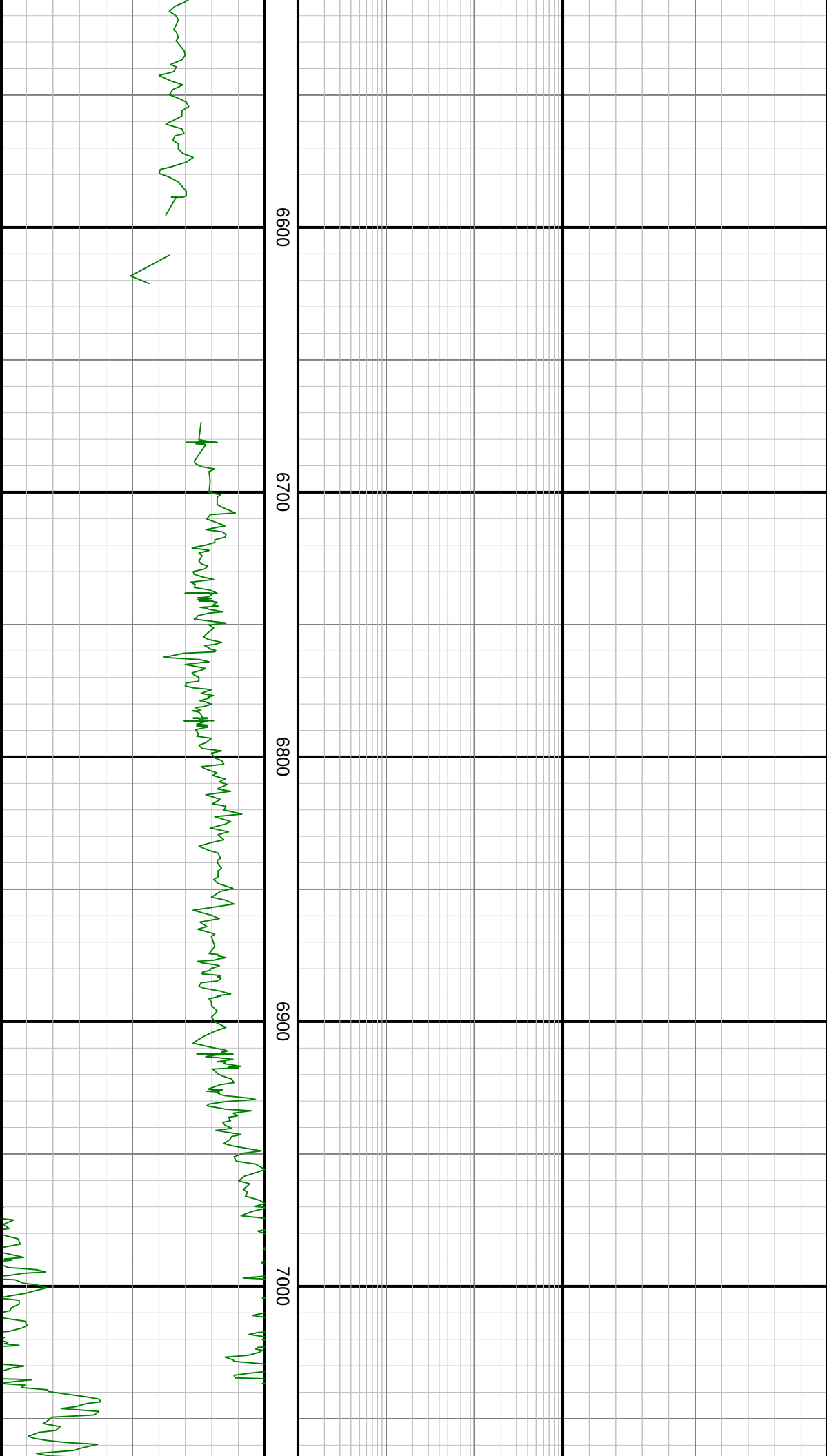
Surveys

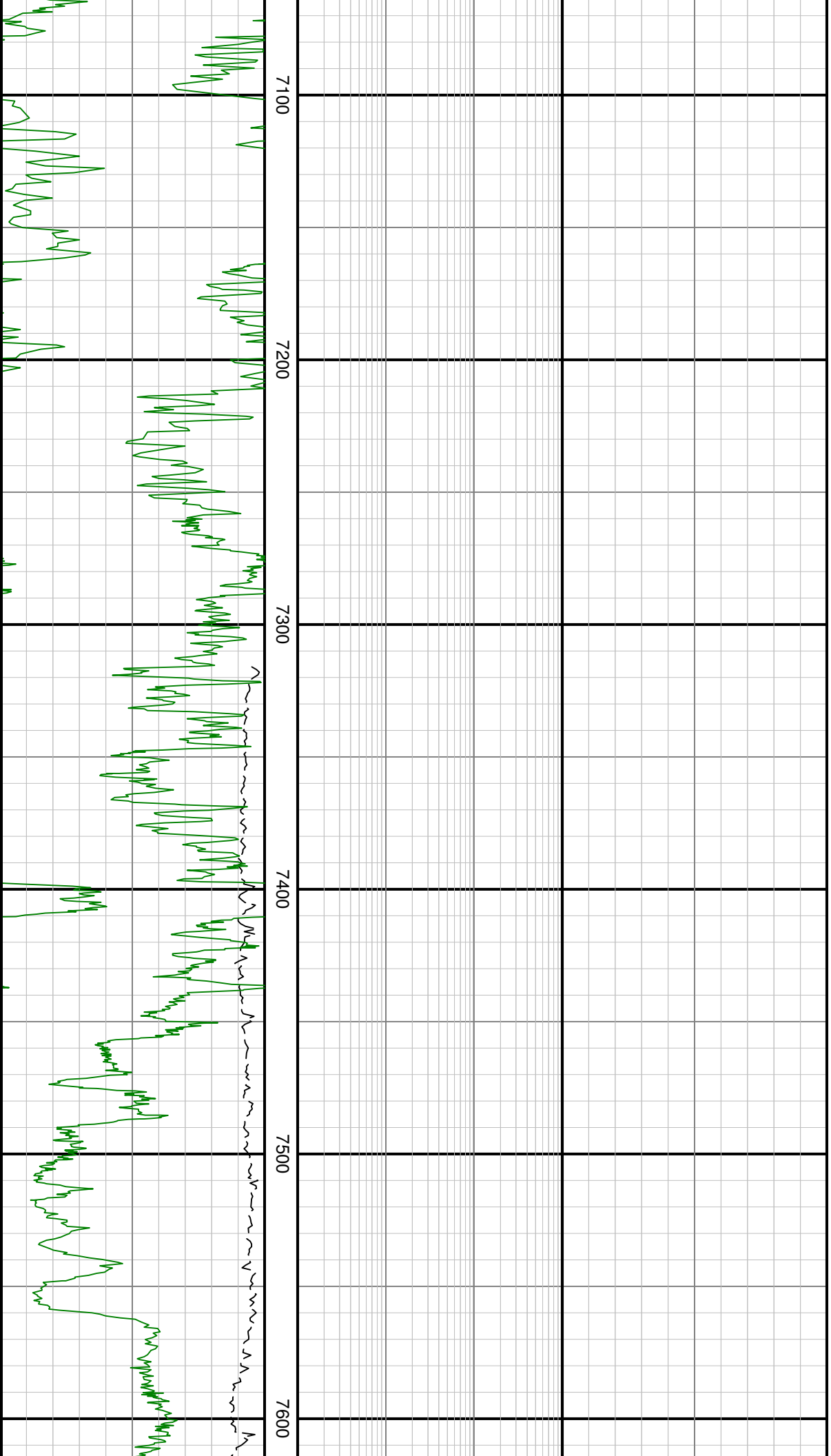


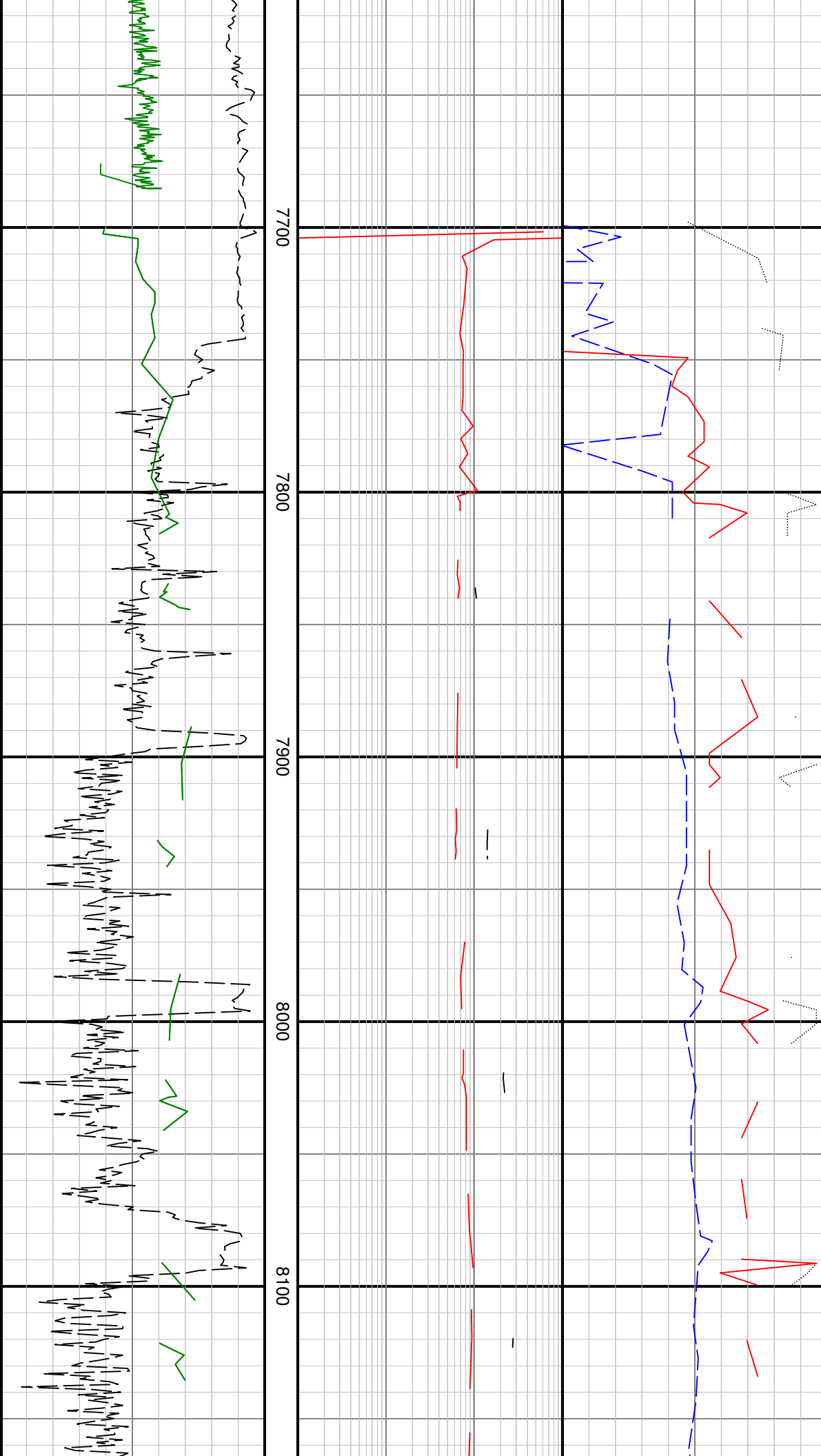
0 5100 5200 5300 5400



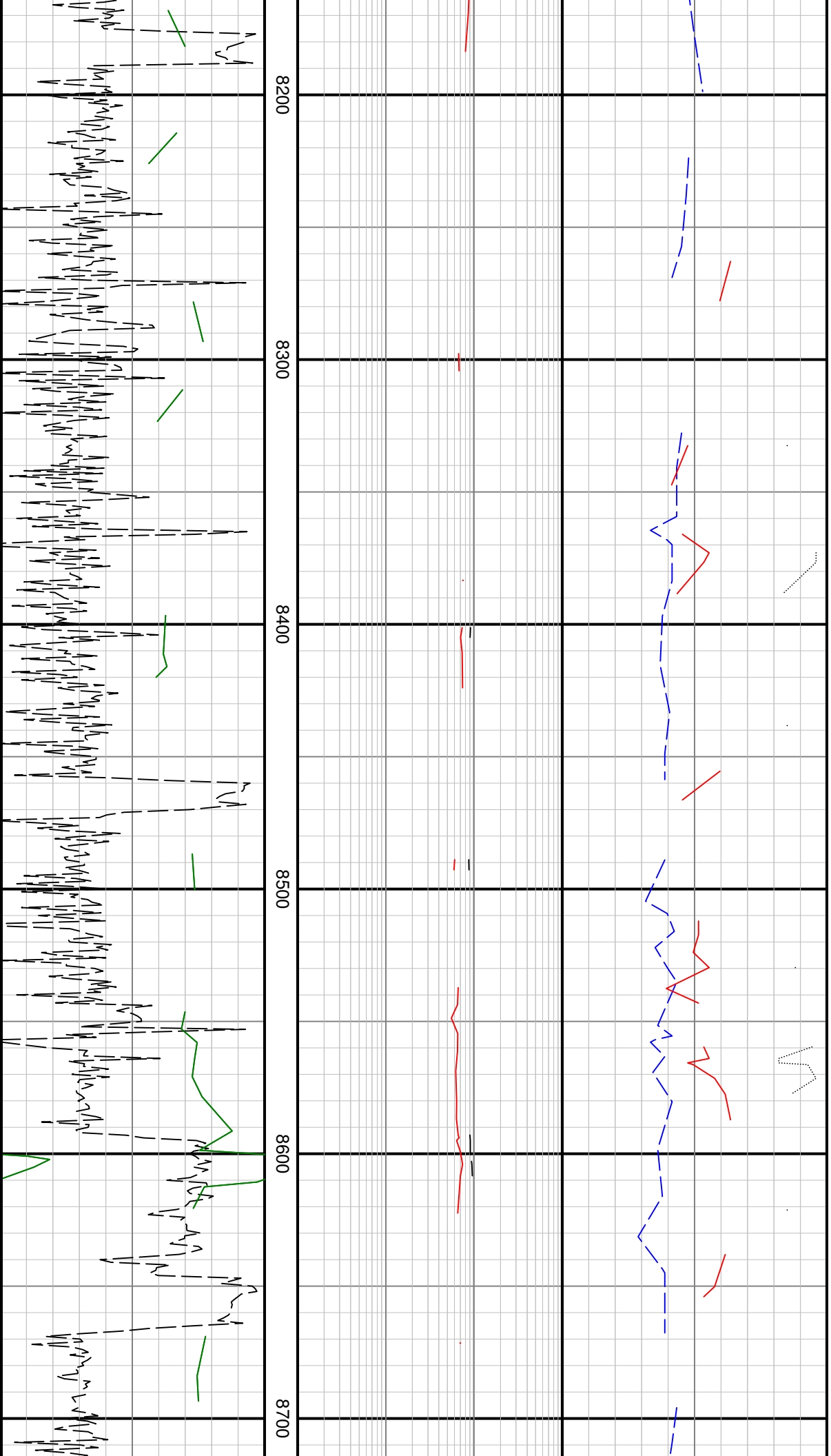


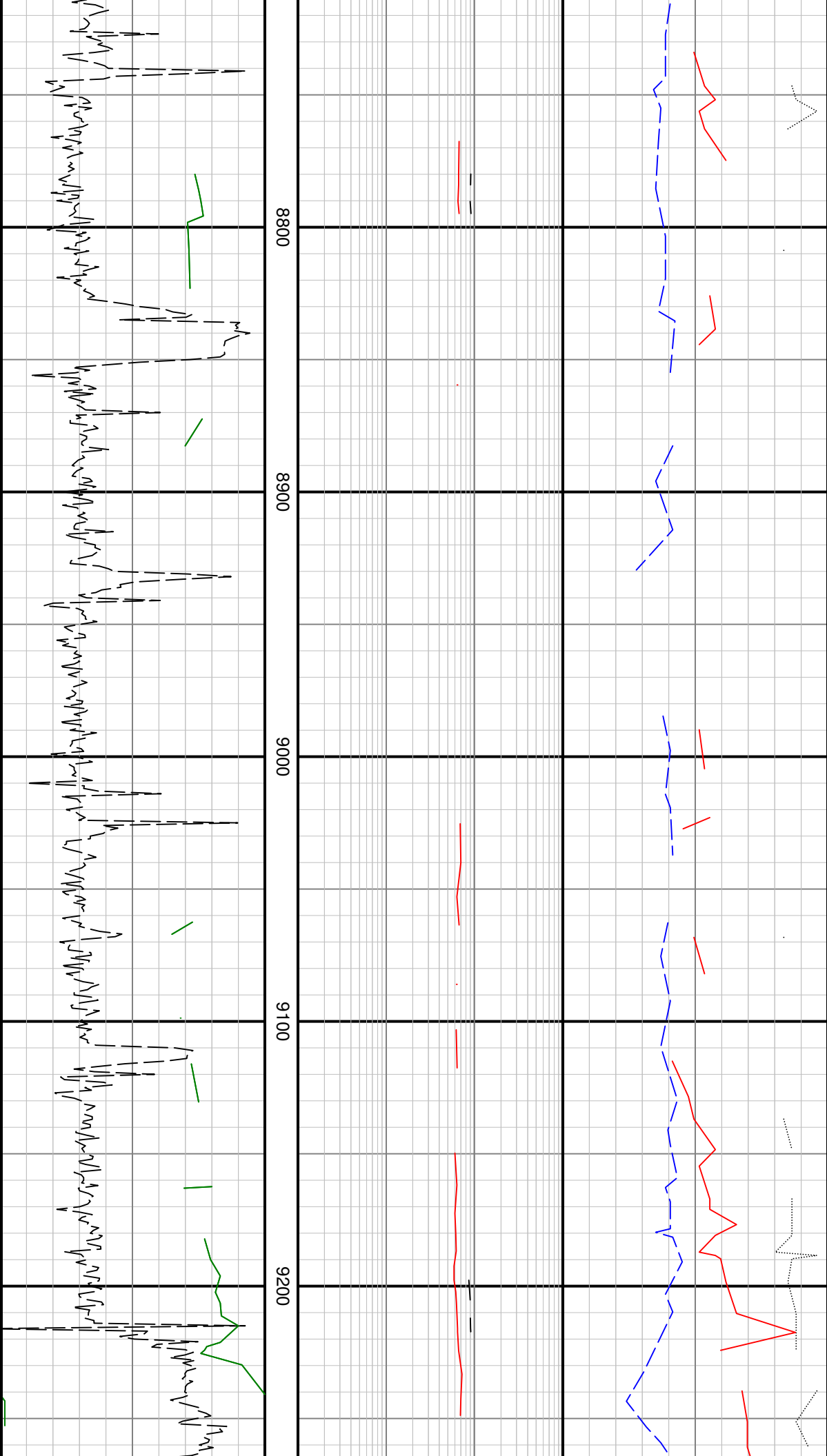


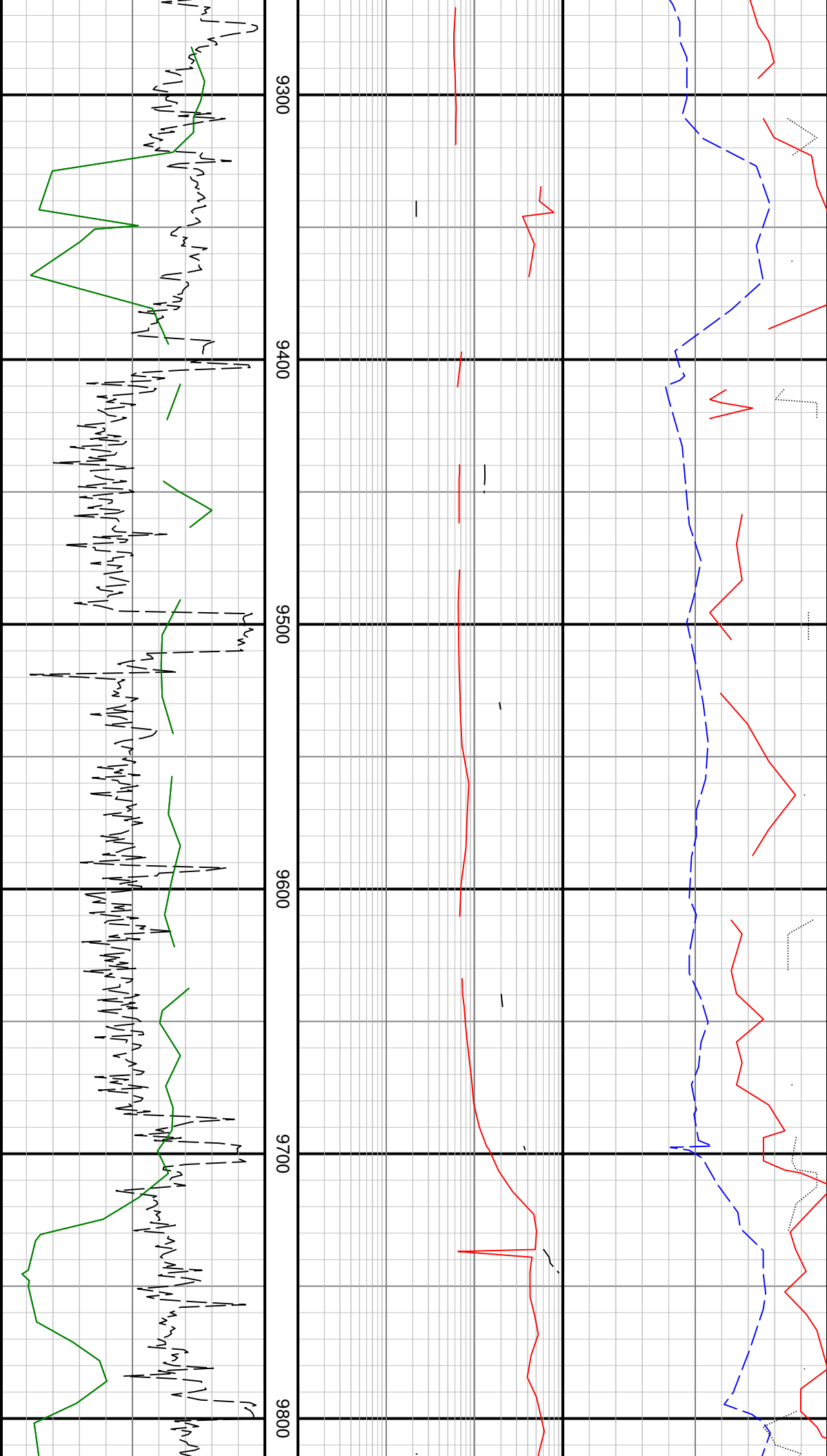


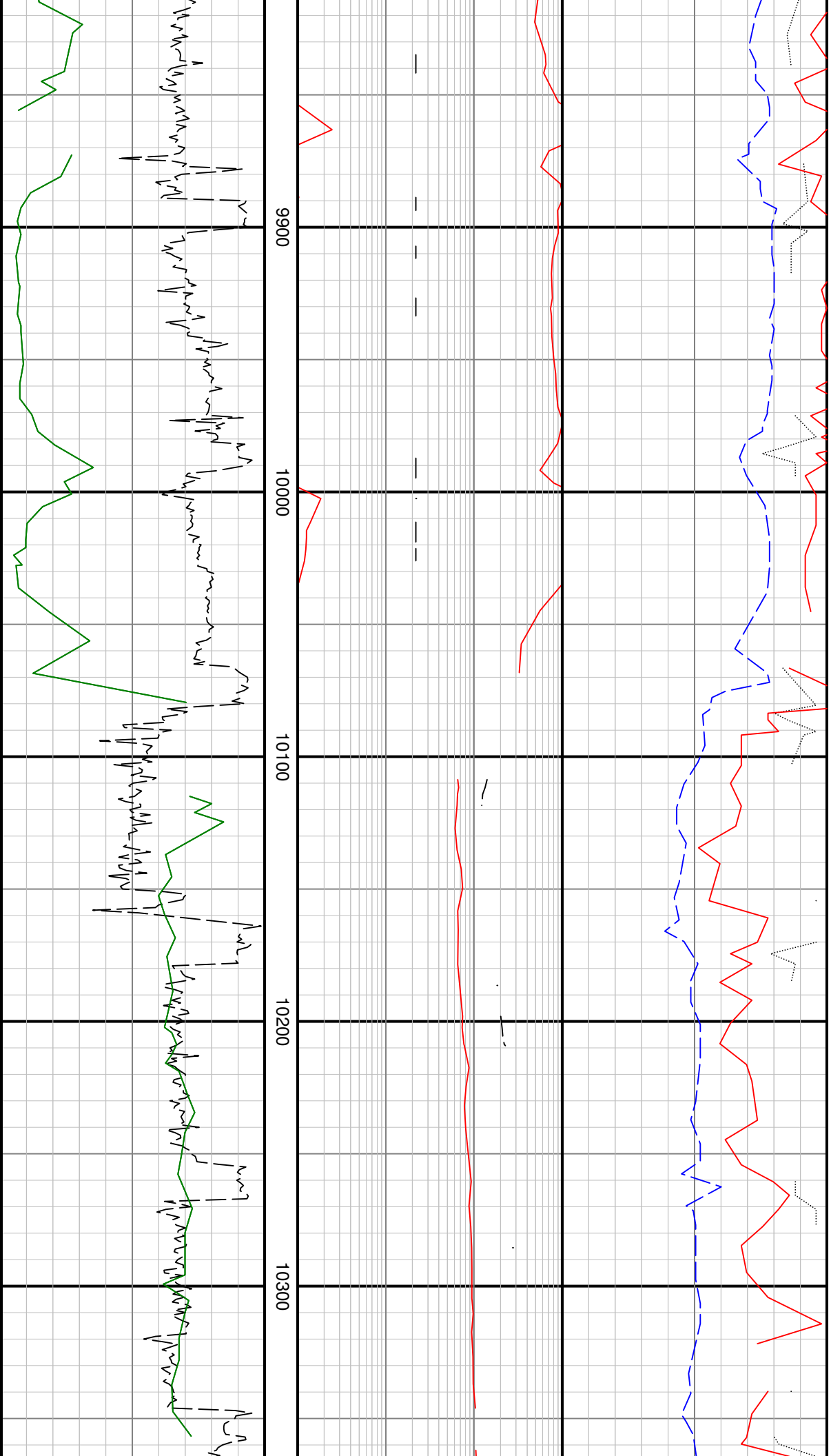


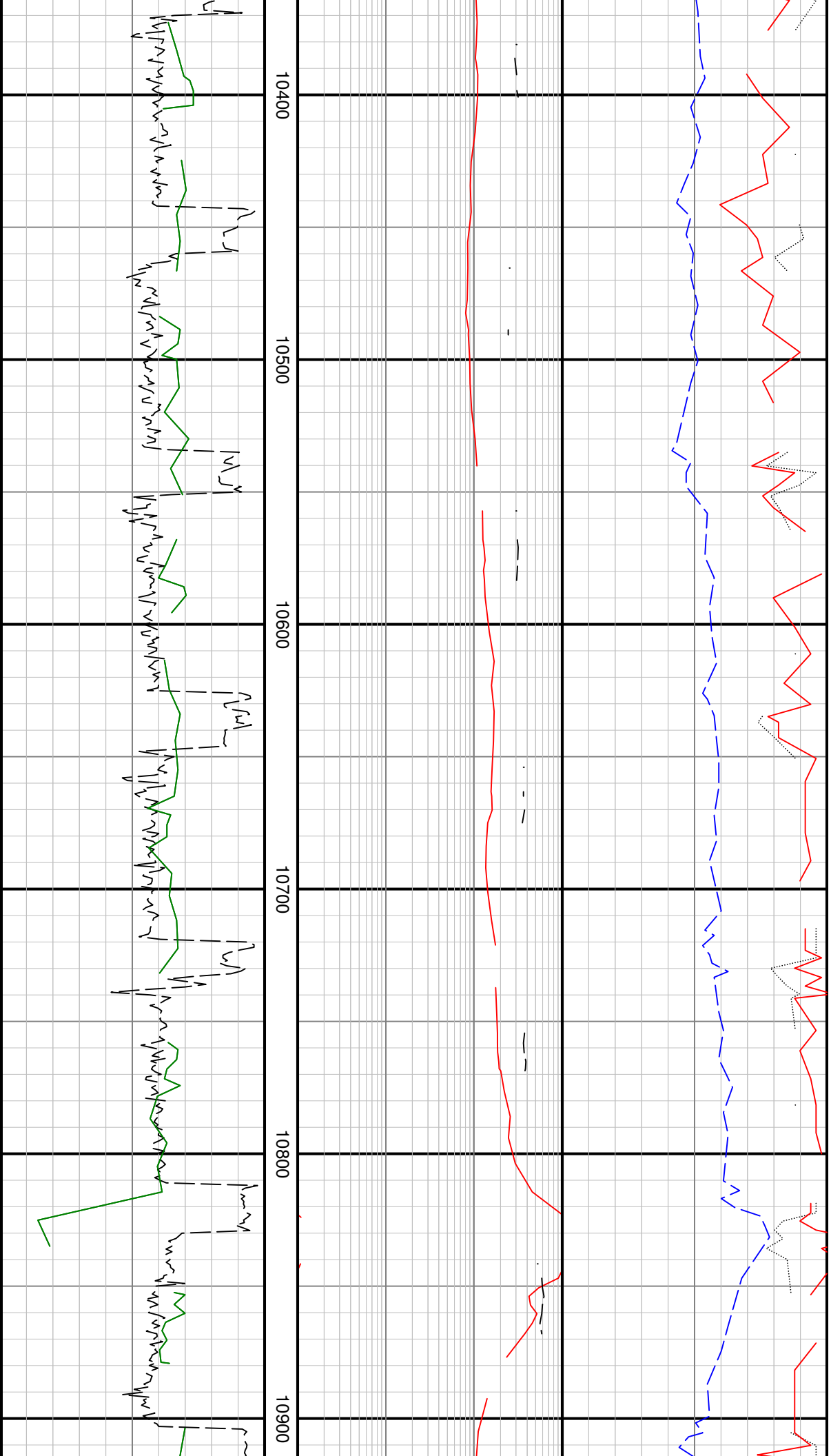
Survey @ 7827 MD 91.38 INC
275.35 AZI 7156.00 TVD

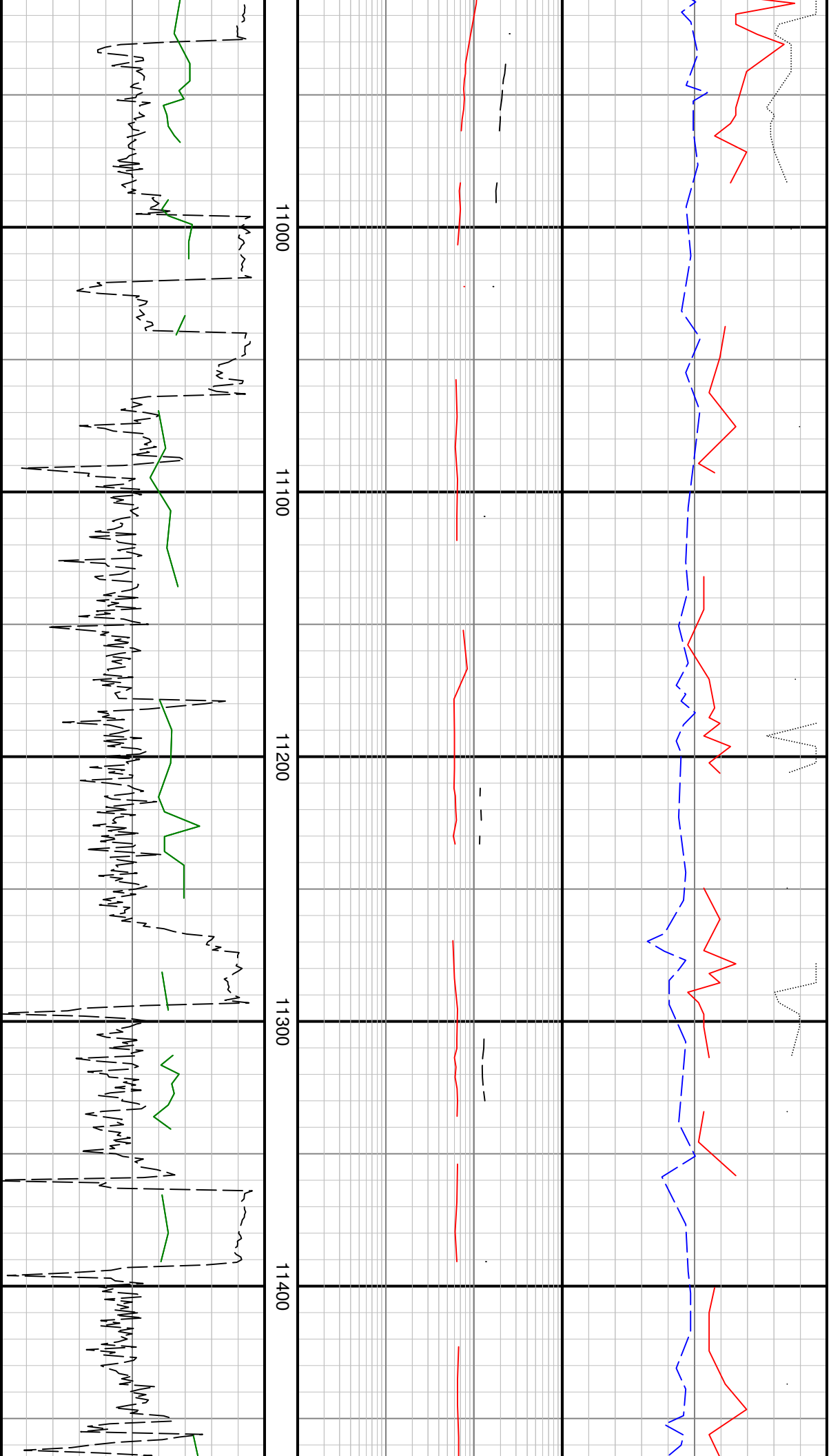


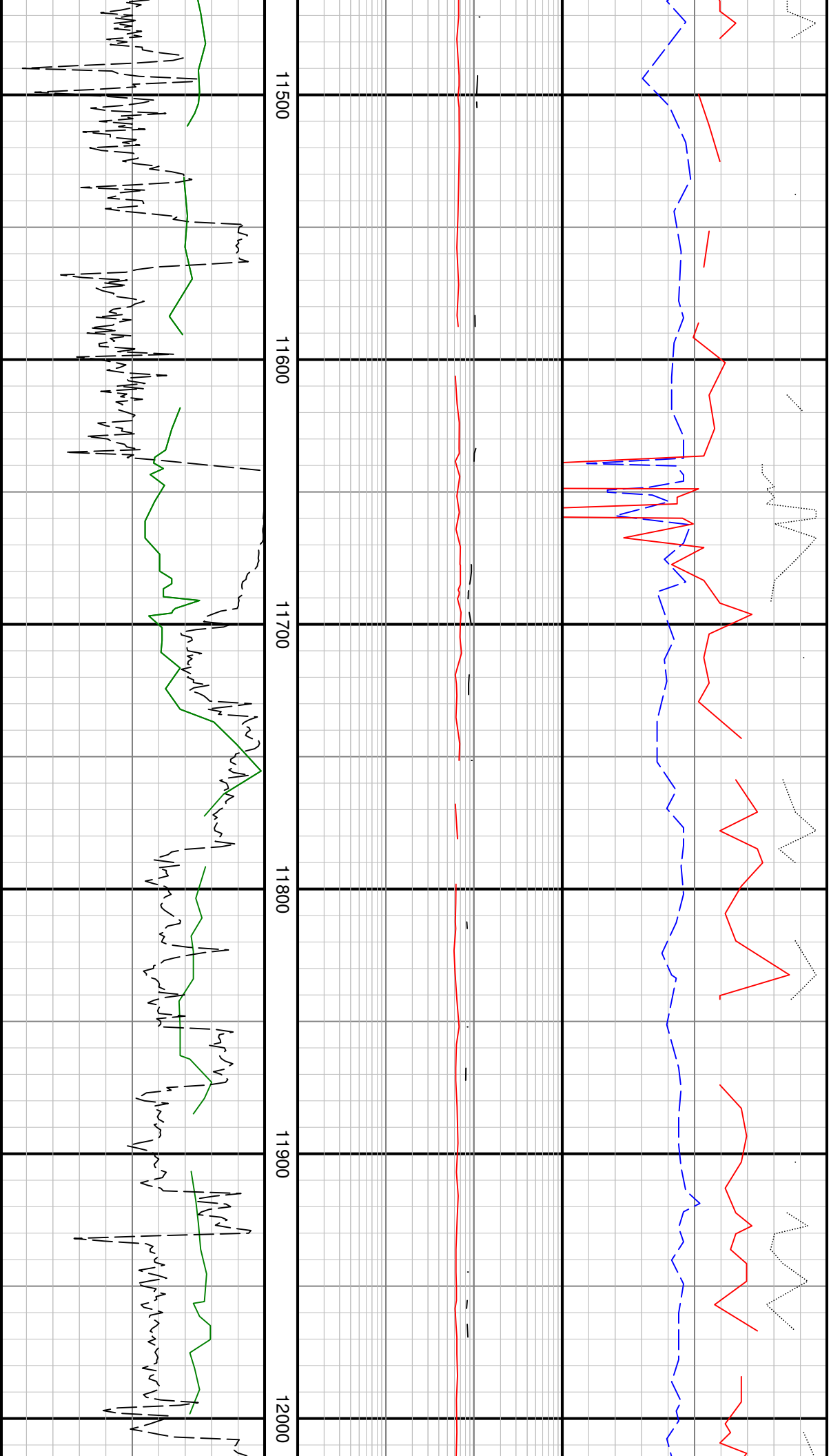


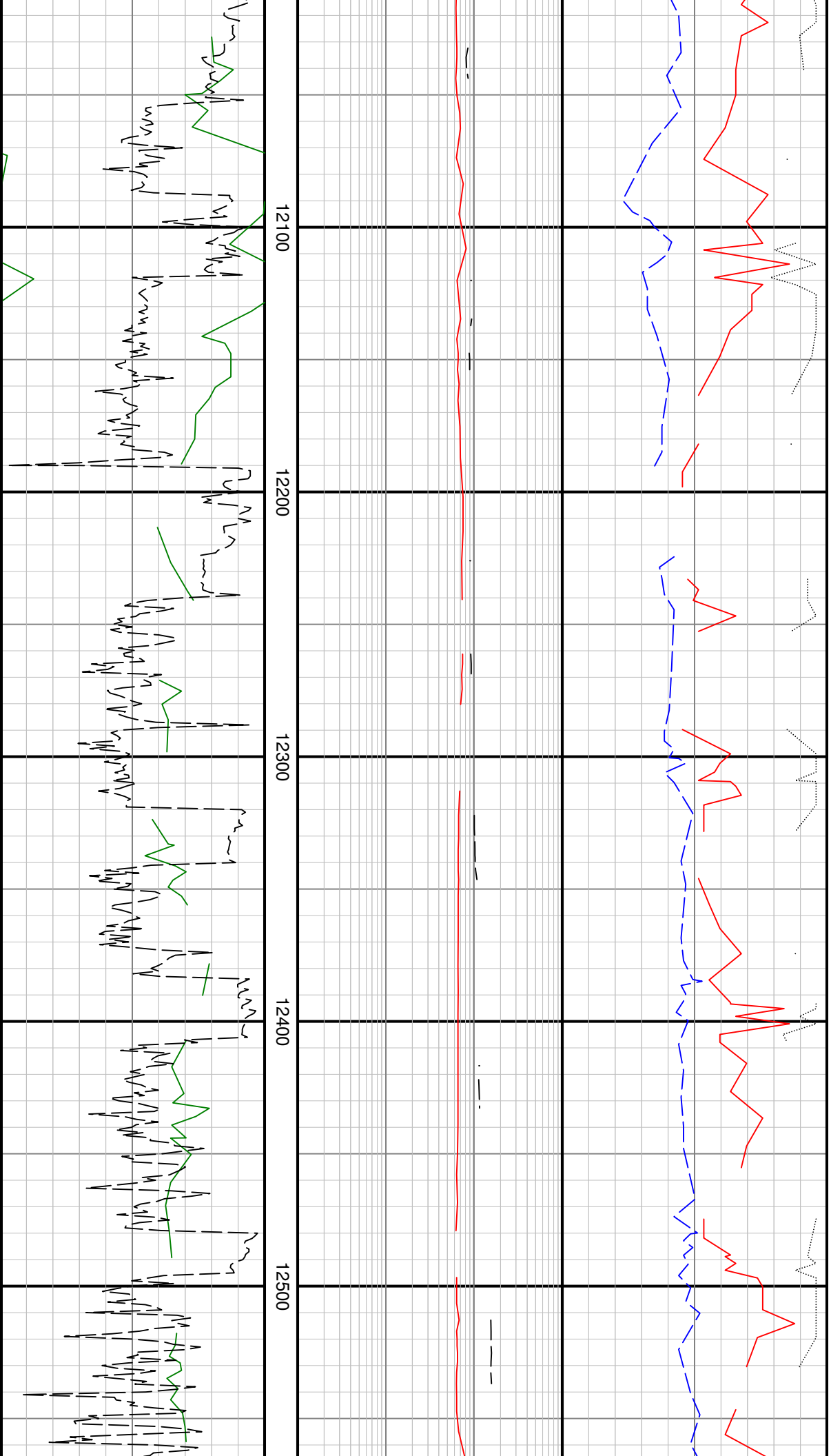


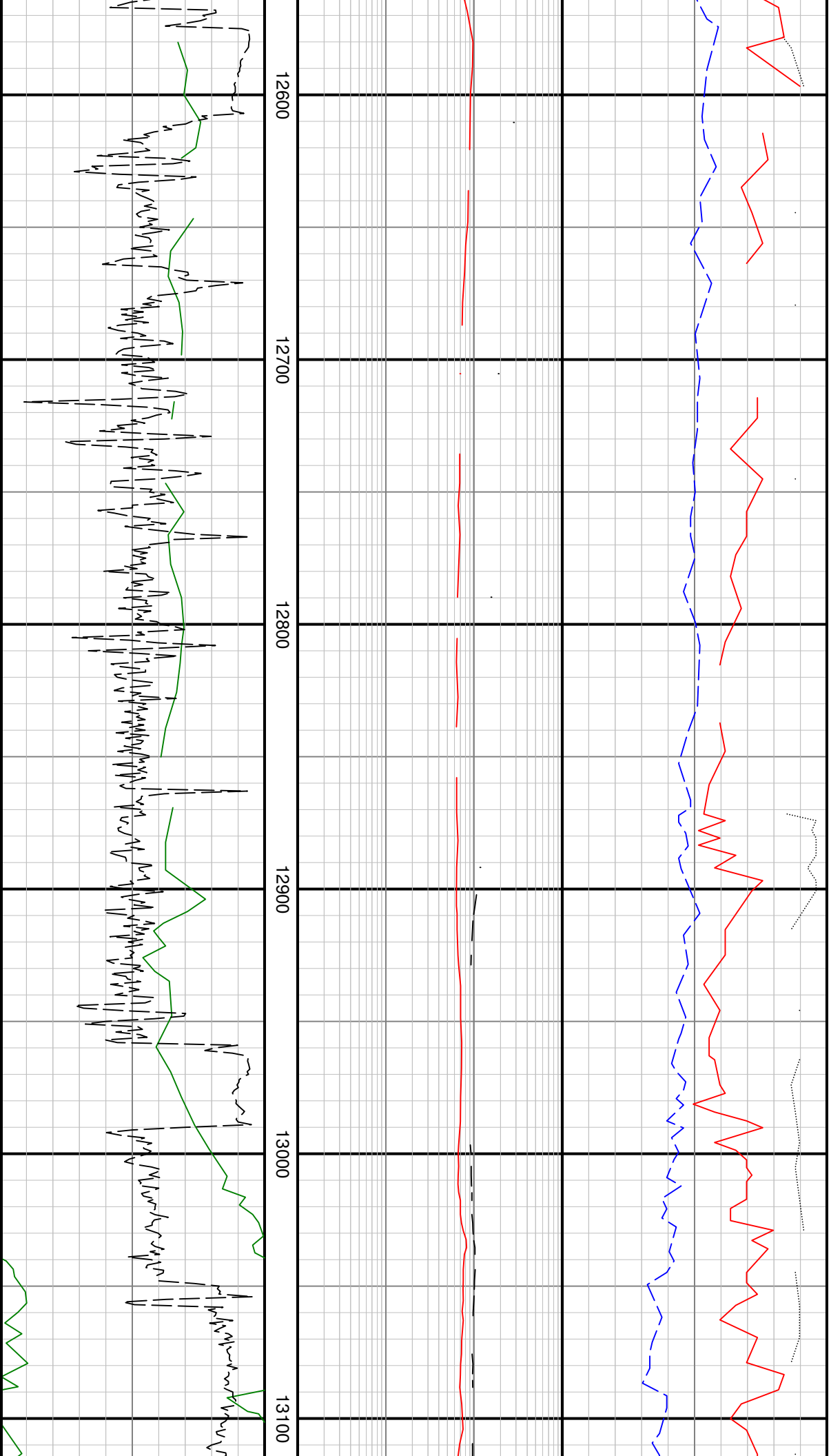


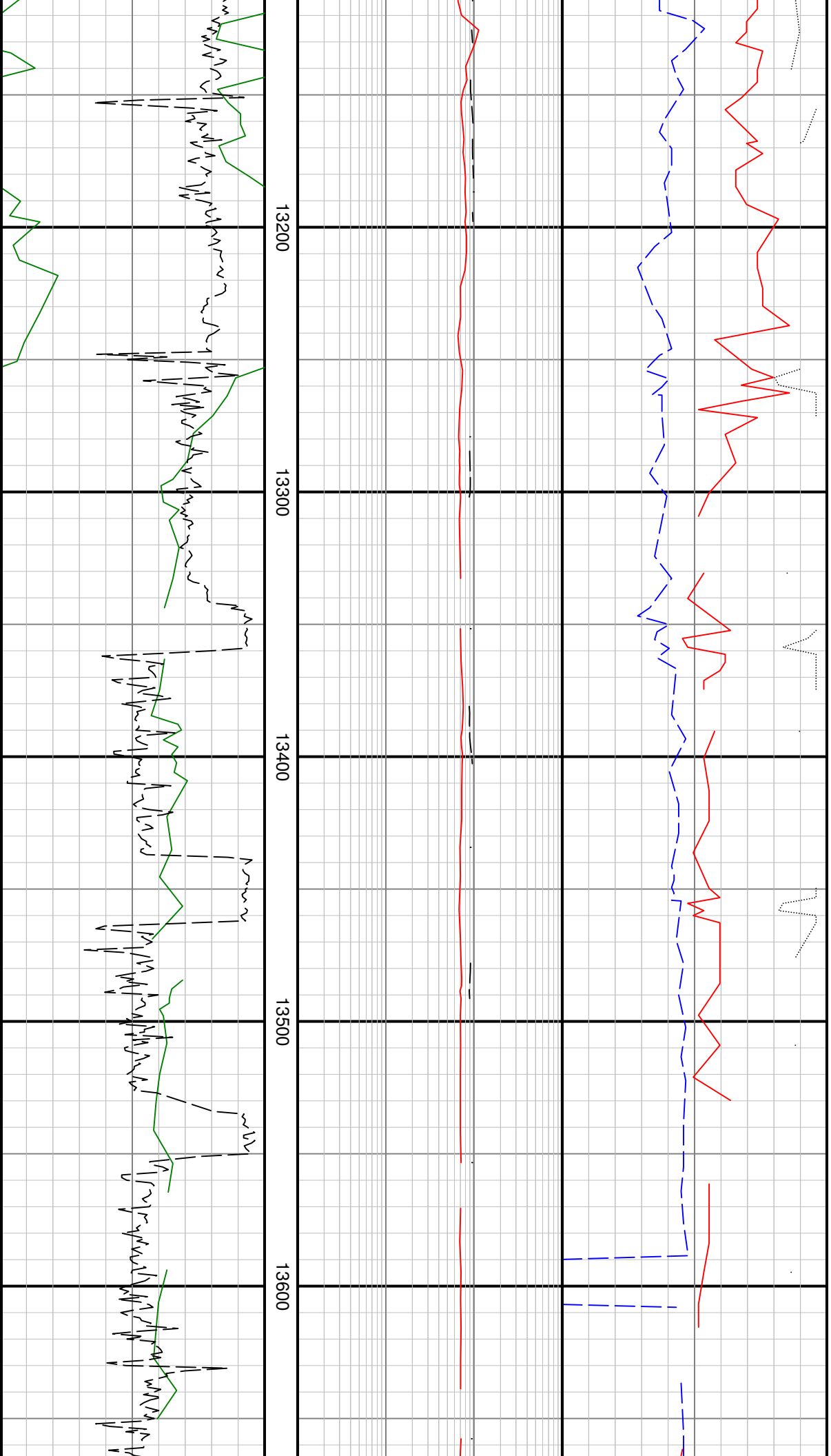


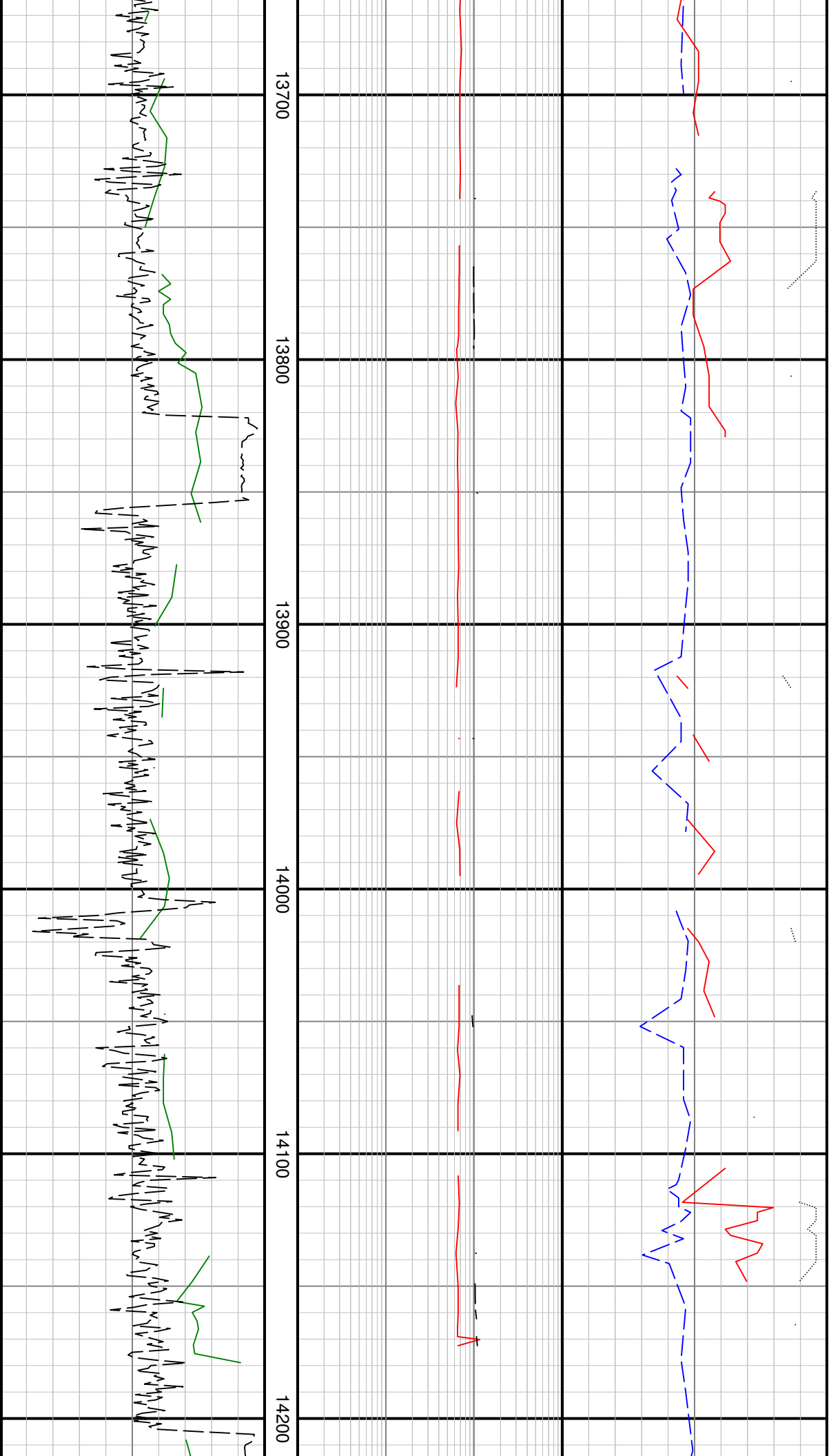


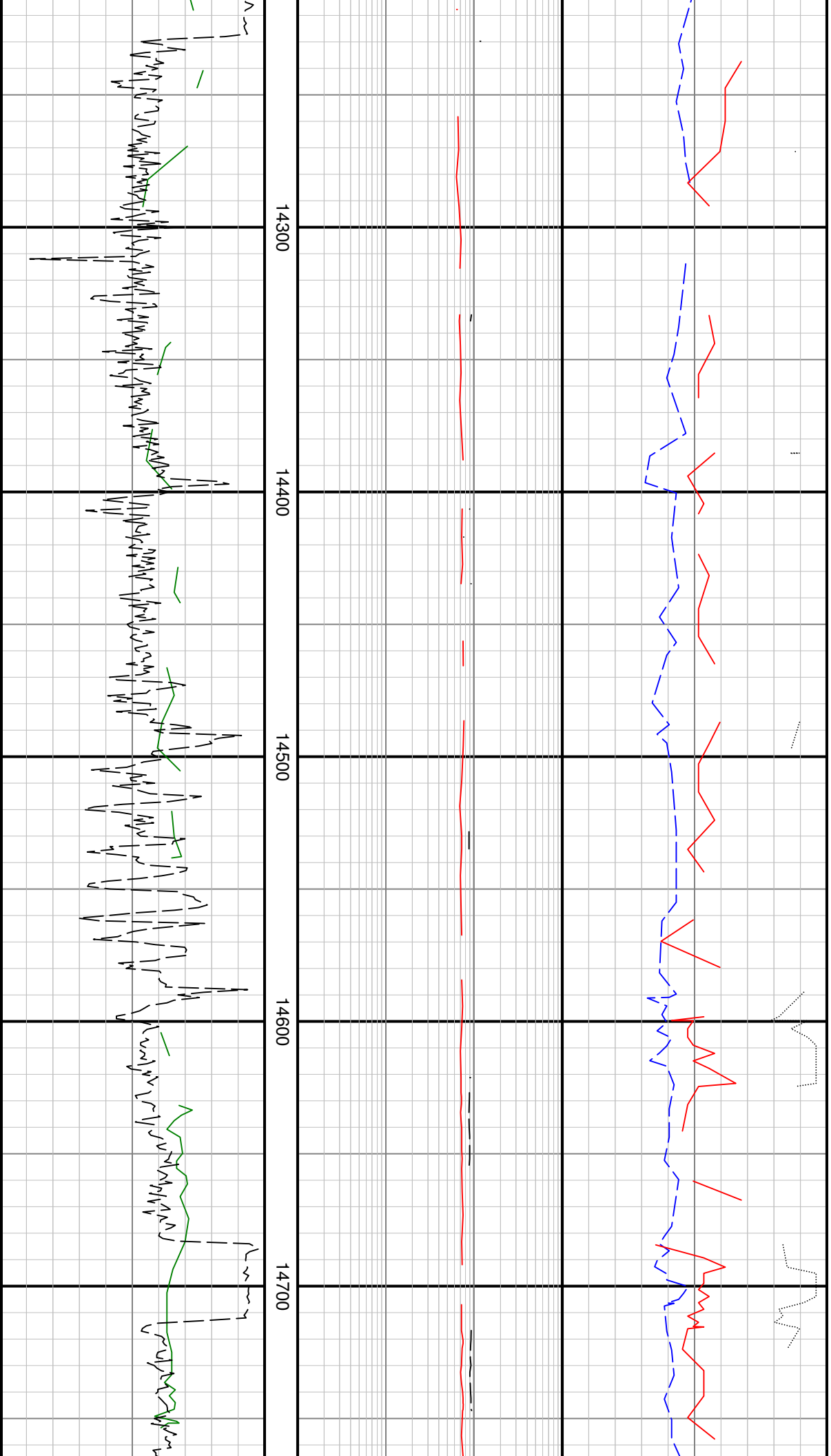


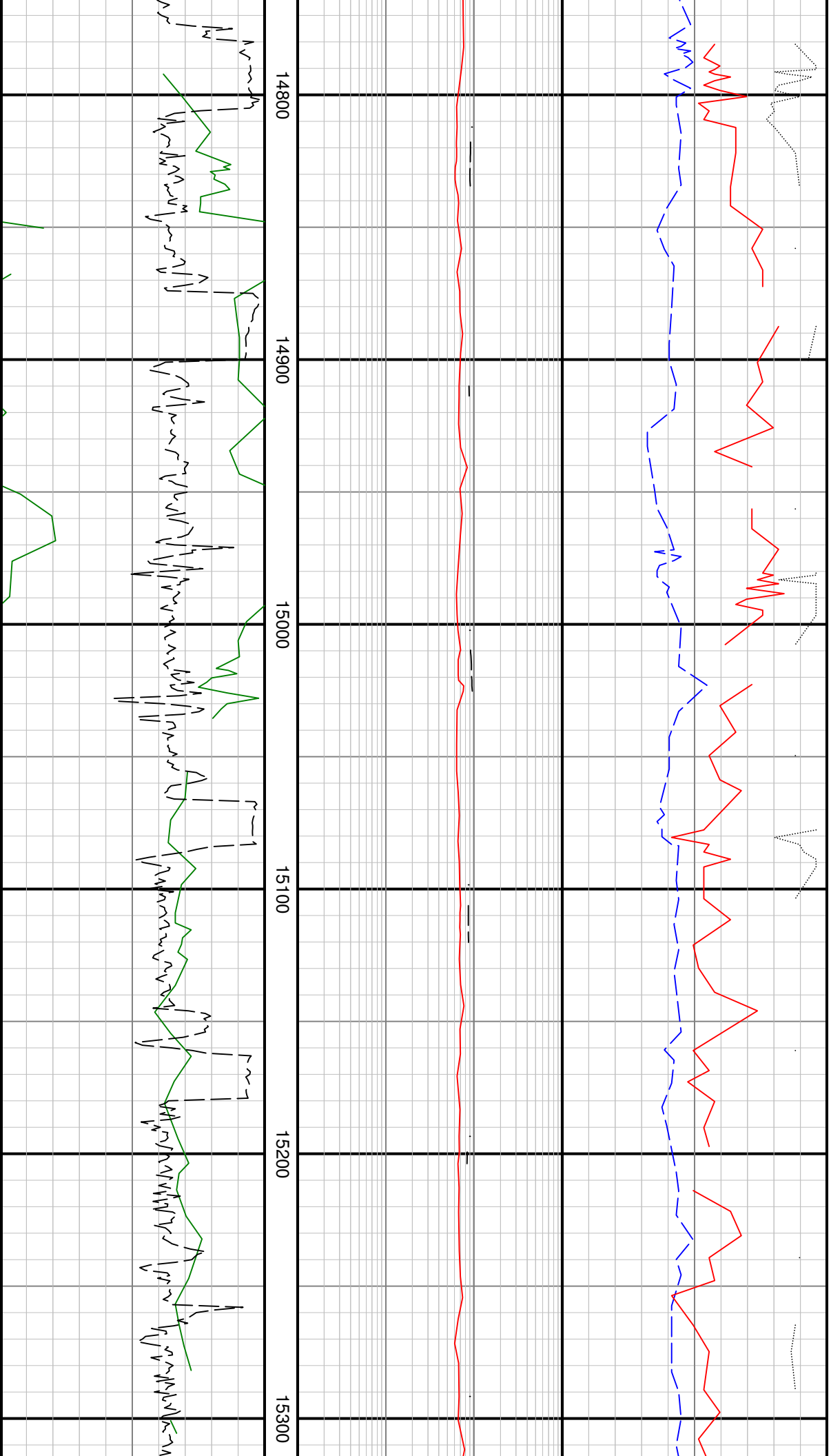


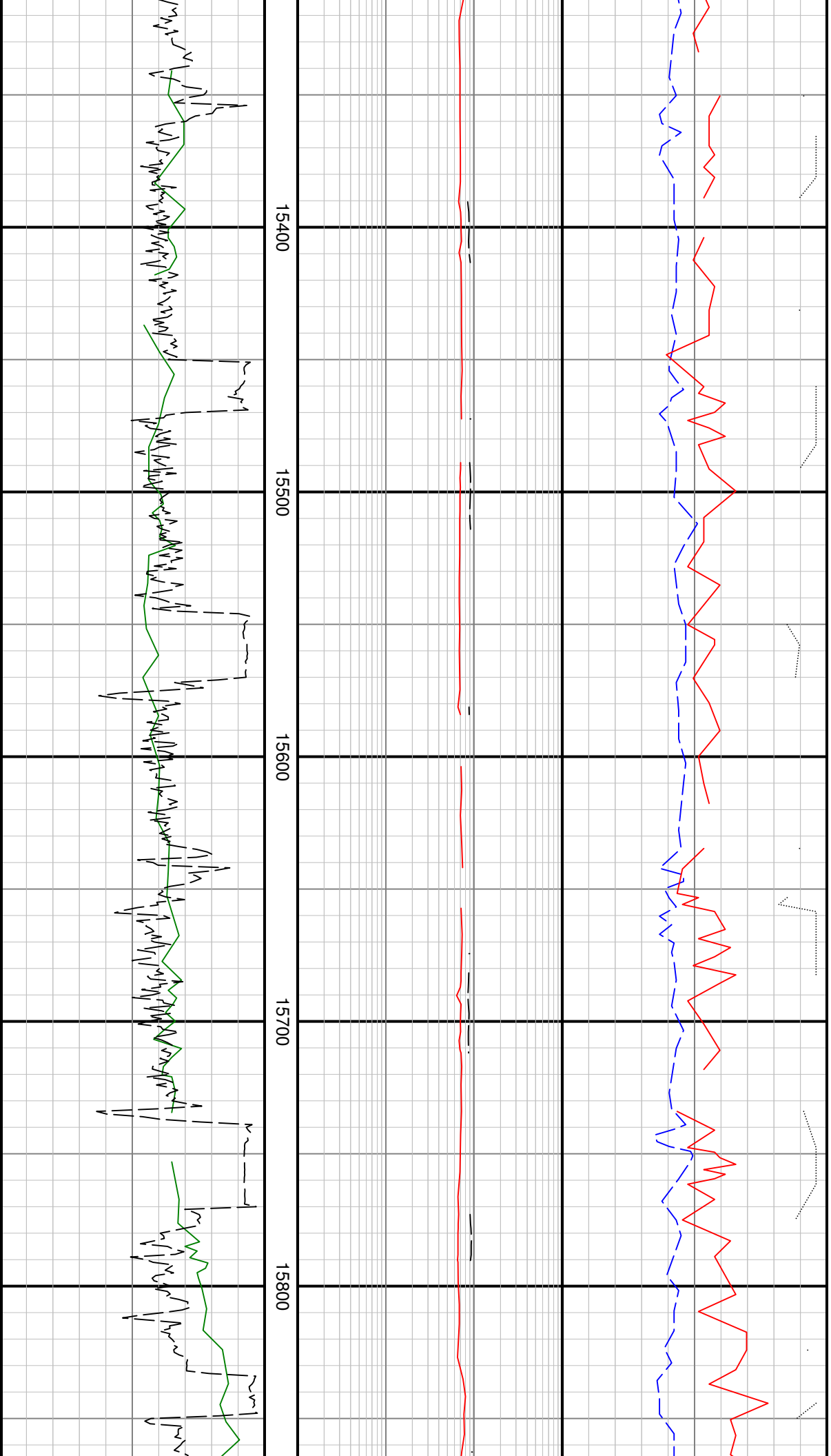


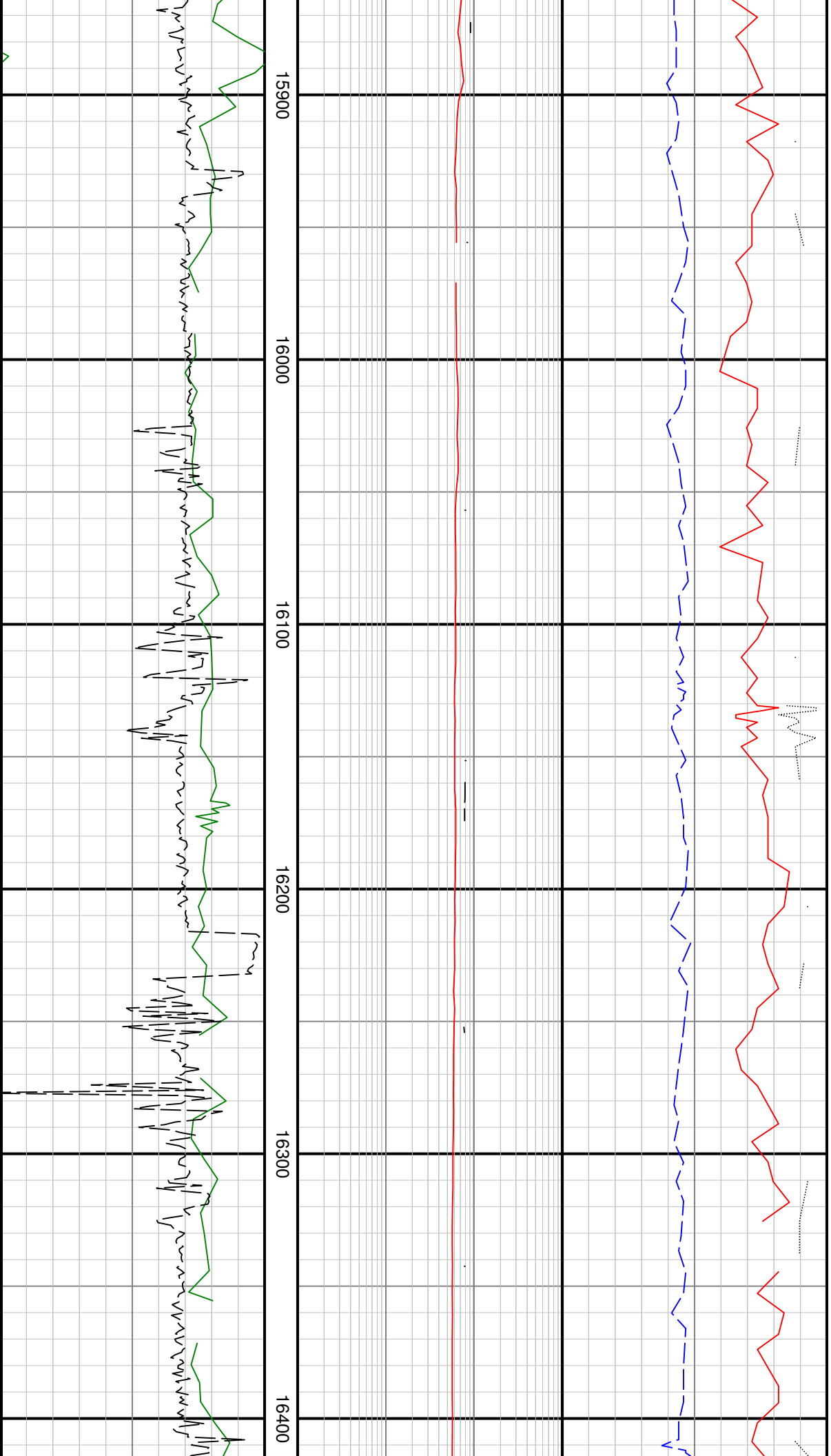


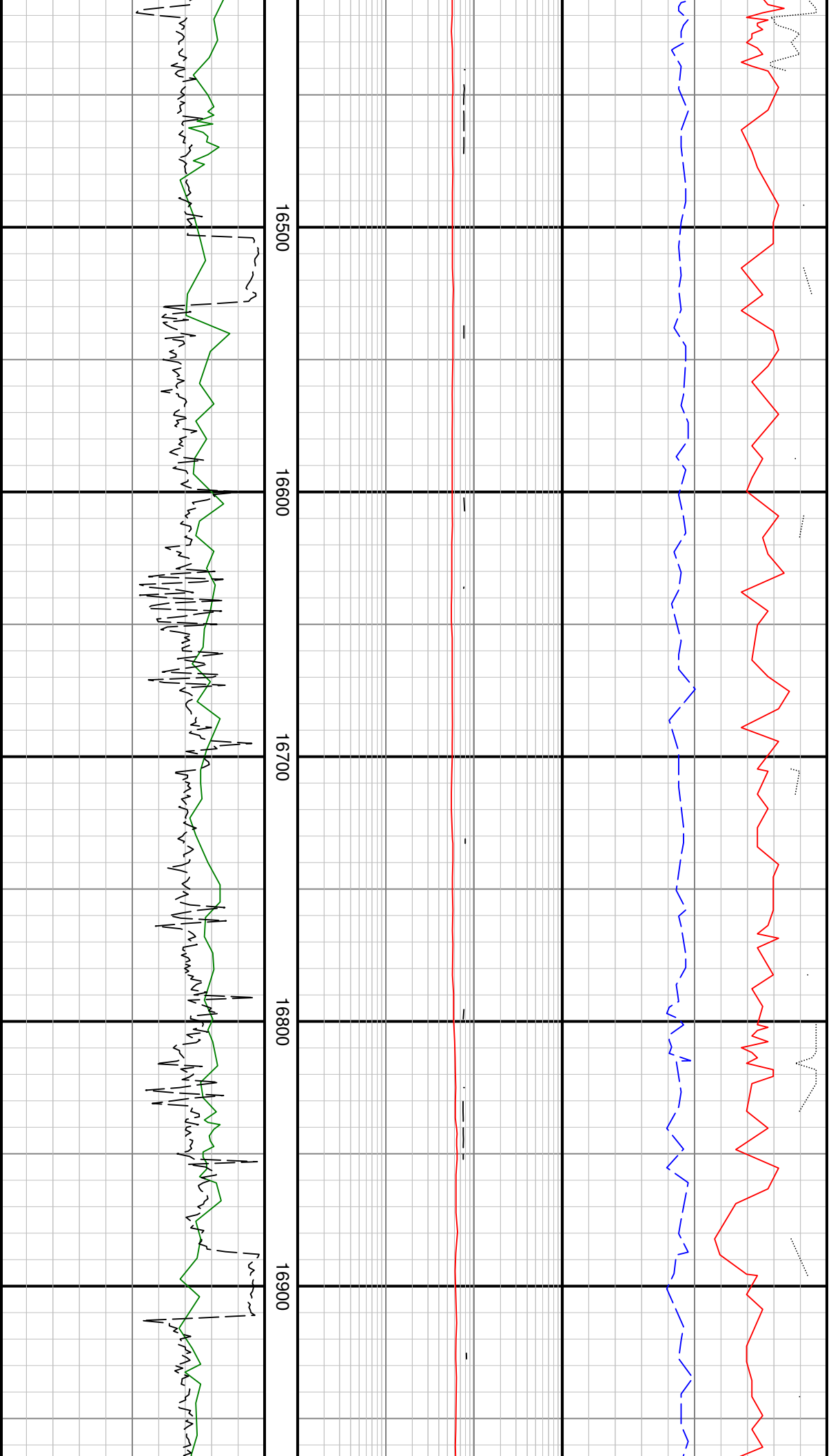


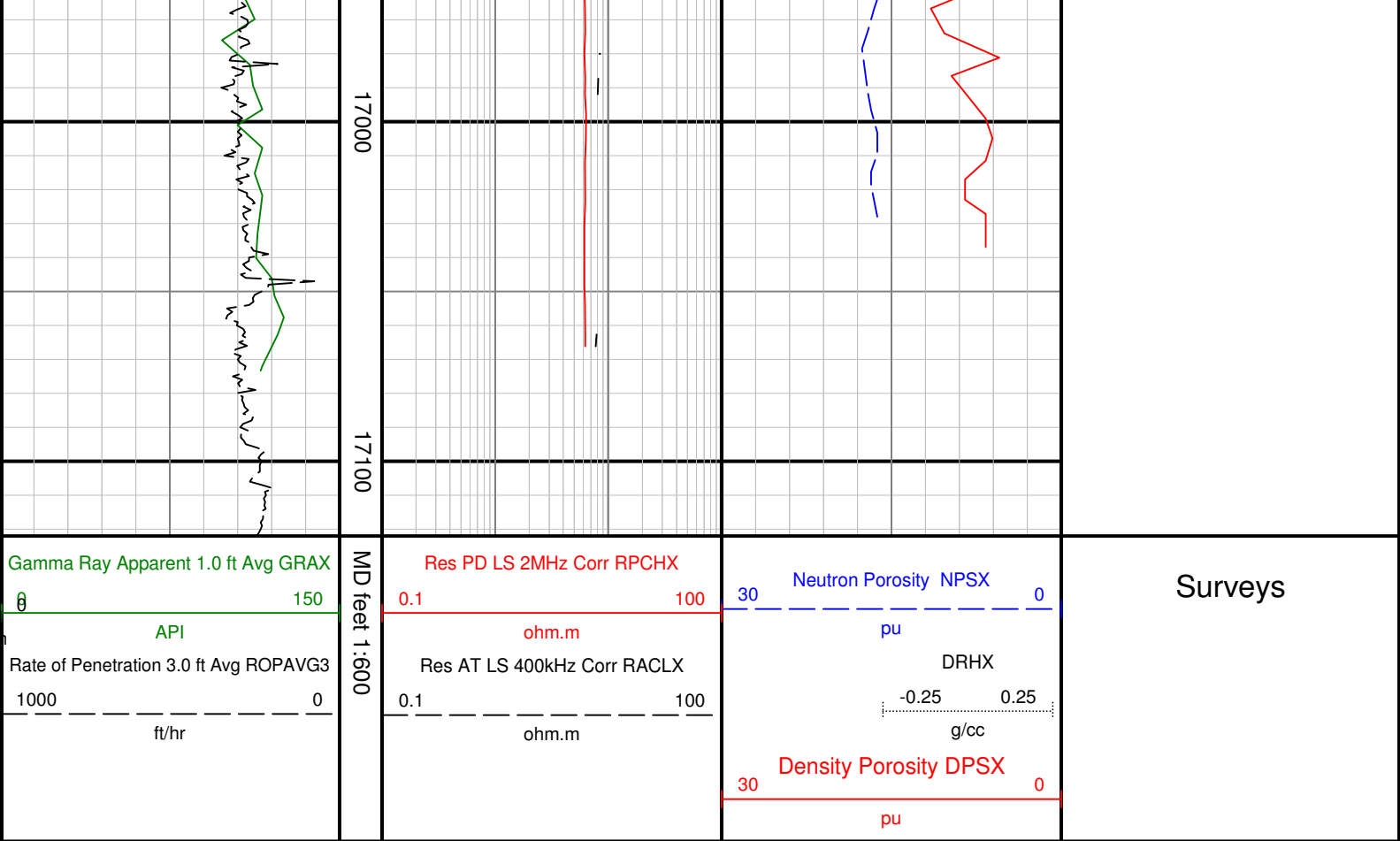












Surveys