

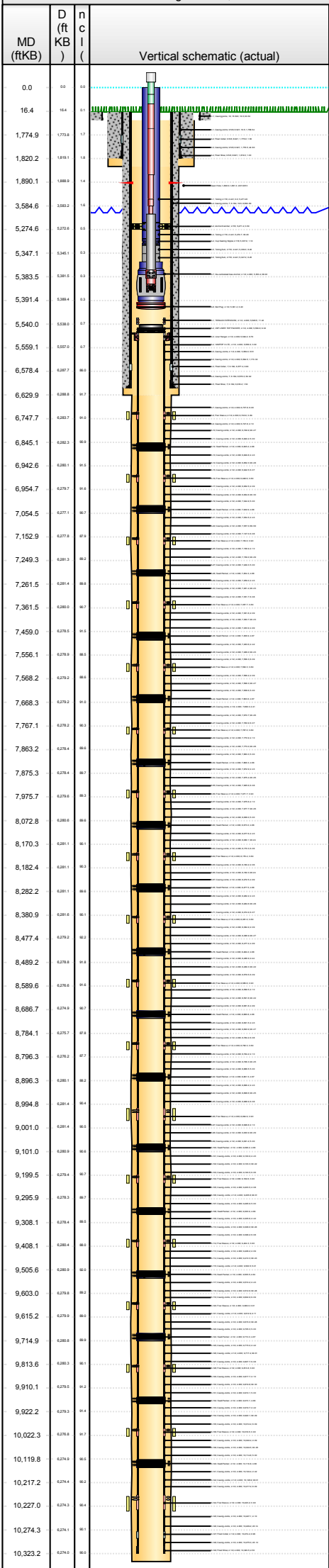


Lease Review

Well Name: WILDHORSE 18-1844H

API Number 051233612700		WPC ID 1CO076866			Well Permit Number			Field Name DJ Horizontal Niobrara			County Weld		State CO	
Well Configuration Type Lateral/Horizontal				Orig KB Elv (ft) 5,042.50		Ground Elevation (ft) 5,026.00		Casing Flange Elevation (ft)		Tubing Head Elevation (ft)		Total Depth (ftKB) 10,333.0		
Original Spud Date 2/5/2013		Completion Date 3/8/2013		Asset Group Redtail			Responsible Engineer Andrew Fish			N/S Dist (ft) 320.0		N/S Ref FNL	E/W Dist (ft) 660.0	E/W Ref FEL
Lot	Quarter 1 NE	Quarter 2 NE	Quarter 3	Quarter 4	Section 18	Section Suffix	Section Type		Township 9 N	Township N/S Dir		Range 59	Range E/W Dir W	Meridian 6TH

Lateral/Horizontal - Original Hole, 1/12/2015 1:46:02 PM



Wellbore Sections

Section Des	Wellbore Name	Start Date	Size (in)	Act Top (ftKB)	Act Btm (ftKB)
Conductor	Original Hole	2/3/2015	24	16.5	80.0
Surface	Original Hole	2/4/2013	13 1/2	80.0	1,830.0
Intermediate	Original Hole	2/8/2013	8 3/4	1,830.0	6,630.0
Lateral	Original Hole	2/12/2013	6	6,630.0	10,333.0

Conductor Pipe, 80.0ftKB

OD (in)	Wt (lb/ft)	Grade	Top (ftKB)	Btm (ftKB)	Len (ft)	Item Des
16	42.09	J-55	16.5	80.0	63.50	Casing joints

Surface Csg, 1,820.3ftKB

OD (in)	Wt (lb/ft)	Grade	Top (ftKB)	Btm (ftKB)	Len (ft)	Item Des
9 5/8	36.00	J-55	16.5	1,775.0	1,758.54	Casing Joints
9 5/8	36.00	J-55	1,775.0	1,776.5	1.50	Float Collar
9 5/8	36.00	J-55	1,776.5	1,819.3	42.80	Casing Joints
9 5/8	36.00	J-55	1,819.3	1,820.3	1.00	Float Shoe

Intermediate Csg, 6,619.7ftKB

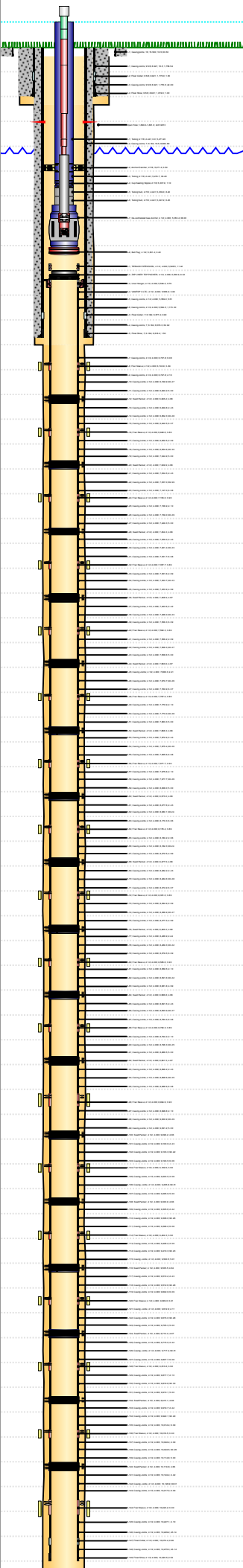
OD (in)	Wt (lb/ft)	Grade	Top (ftKB)	Btm (ftKB)	Len (ft)	Item Des
7	29.00		16.5	16.5	0.00	Landing Joint
7	29.00	HCP-110	16.5	6,577.4	6,560.89	Casing Joints
7	29.00	HCP-110	6,577.4	6,578.3	0.90	Float Collar
7	29.00	HCP-110	6,578.3	6,618.2	39.92	Casing Joints
7	29.00	HCP-110	6,618.2	6,619.7	1.50	Float Shoe

Liner, 10,323.0ftKB

OD (in)	Wt (lb/ft)	Grade	Top (ftKB)	Btm (ftKB)	Len (ft)	Item Des
4 1/2	11.60		5,528.5	5,539.9	11.42	TIEBACK EXTENSION
4 1/2	11.60		5,539.9	5,549.2	9.32	ZXP LINER TOP PACKER
4 1/2	11.60		5,549.2	5,556.0	6.79	Liner Hanger
4 1/2	11.60		5,556.0	5,559.0	3.00	VAMTOP X LTC
4 1/2	11.60	P-110	5,559.0	5,564.5	5.51	Casing Joints
4 1/2	11.60	SeAH-90	5,564.5	6,737.8	1,173.30	Casing Joints
4 1/2	11.60	P-110	6,737.8	6,743.9	6.08	Casing Joints
4 1/2	11.60		6,743.9	6,747.8	3.89	Frac Sleeve
4 1/2	11.60	P-110	6,747.8	6,749.9	2.10	Casing Joints
4 1/2	11.60	SeAH-90	6,749.9	6,840.2	90.27	Casing Joints
4 1/2	11.60	P-110	6,840.2	6,845.2	5.00	Casing Joints
4 1/2	11.60		6,845.2	6,849.8	4.66	Swell Packer
4 1/2	11.60	P-110	6,849.8	6,852.3	2.43	Casing Joints
4 1/2	11.60	SeAH-90	6,852.3	6,942.5	90.28	Casing Joints
4 1/2	11.60	P-110	6,942.5	6,948.6	6.07	Casing Joints
4 1/2	11.60		6,948.6	6,952.5	3.89	Frac Sleeve
4 1/2	11.60	P-110	6,952.5	6,954.6	2.09	Casing Joints
4 1/2	11.60	SeAH-90	6,954.6	7,044.9	90.30	Casing Joints
4 1/2	11.60	P-110	7,044.9	7,049.9	5.00	Casing Joints
4 1/2	11.60		7,049.9	7,054.5	4.66	Swell Packer
4 1/2	11.60	P-110	7,054.5	7,057.0	2.43	Casing Joints
4 1/2	11.60	SeAH-90	7,057.0	7,147.0	89.99	Casing Joints
4 1/2	11.60	P-110	7,147.0	7,153.0	6.08	Casing Joints
4 1/2	11.60		7,153.0	7,156.9	3.90	Frac Sleeve
4 1/2	11.60	P-110	7,156.9	7,159.0	2.10	Casing Joints
4 1/2	11.60	SeAH-90	7,159.0	7,249.3	90.29	Casing Joints
4 1/2	11.60	P-110	7,249.3	7,254.3	5.00	Casing Joints
4 1/2	11.60		7,254.3	7,259.0	4.66	Swell Packer
4 1/2	11.60	P-110	7,259.0	7,261.4	2.43	Casing Joints
4 1/2	11.60	SeAH-90	7,261.4	7,351.7	90.23	Casing Joints
4 1/2	11.60	P-110	7,351.7	7,357.7	6.08	Casing Joints
4 1/2	11.60		7,357.7	7,361.6	3.89	Frac Sleeve
4 1/2	11.60	P-110	7,361.6	7,363.7	2.09	Casing Joints
4 1/2	11.60	SeAH-90	7,363.7	7,453.9	90.23	Casing Joints
4 1/2	11.60	P-110	7,453.9	7,458.9	4.99	Casing Joints
4 1/2	11.60		7,458.9	7,463.6	4.67	Swell Packer
4 1/2	11.60	P-110	7,463.6	7,466.0	2.42	Casing Joints
4 1/2	11.60	SeAH-90	7,466.0	7,556.3	90.23	Casing Joints
4 1/2	11.60	P-110	7,556.3	7,562.3	6.09	Casing Joints



Lease Review  
Well Name: WILDHORSE 18-1844H

WPC ID 1CO076866				Well Permit Number				Field Name DJ Horizontal Niobrara				County Weld		State CO		
Well Configuration Type Lateral/Horizontal				Orig KB Elv (ft) 5,042.50		Ground Elevation (ft) 5,026.00		Casing Flange Elevation (ft)		Tubing Head Elevation (ft)		Total Depth (ftKB) 10,333.0				
Original Spud Date 2/5/2013		Completion Date 3/8/2013		Asset Group Redtail		Responsible Engineer Andrew Fish		N/S Dist (ft) 320.0		N/S Ref FNL		E/W Dist (ft) 660.0		E/W Ref FEL		
Lot		Quarter 1 NE	Quarter 2 NE	Quarter 3	Quarter 4	Section 18	Section Suffix	Section Type		Township 9 N	Township N/S Dir N		Range 59	Range E/W Dir W		Meridian 6TH
Lateral/Horizontal - Original Hole, 1/12/2015 1:46:02 PM							OD (in)	Wt (lb/ft)	Grade	Top (ftKB)	Btm (ftKB)	Len (ft)	Item Des			
MD (ftKB)	D (ft KB )	n ( KB )	c ( KB )	l ( KB )	Vertical schematic (actual)	Logs	4 1/2	11.60		7,562.3	7,566.2	3.89	Frac Sleeve			
							4 1/2	11.60	P-110	7,566.2	7,568.3	2.09	Casing Joints			
							4 1/2	11.60	SeAH-90	7,568.3	7,658.6	90.27	Casing Joints			
0.0	0.0	0.0					4 1/2	11.60	P-110	7,658.6	7,663.6	5.00	Casing Joints			
16.4	16.4	0.1				4 1/2	11.60		7,663.6	7,668.3	4.67	Swell Packer				
1,774.9	1,775.8	1.7				4 1/2	11.60	P-110	7,668.3	7,670.7	2.41	Casing Joints				
1,820.2	1,819.1	1.8				4 1/2	11.60	SeAH-90	7,670.7	7,760.9	90.26	Casing Joints				
1,890.1	1,889.9	1.4					4 1/2	11.60	P-110	7,760.9	7,767.0	6.07	Casing Joints			
3,584.6	3,583.2	1.6				4 1/2	11.60		7,767.0	7,770.9	3.89	Frac Sleeve				
5,274.6	5,272.8	0.5				4 1/2	11.60	P-110	7,770.9	7,773.0	2.10	Casing Joints				
5,347.1	5,345.1	0.3				4 1/2	11.60	SeAH-90	7,773.0	7,863.3	90.28	Casing Joints				
5,383.5	5,381.5	0.3					4 1/2	11.60	P-110	7,863.3	7,868.3	5.00	Casing Joints			
5,391.4	5,389.4	0.3				4 1/2	11.60		7,868.3	7,872.9	4.66	Swell Packer				
5,540.0	5,538.6	0.7				4 1/2	11.60	P-110	7,872.9	7,875.4	2.43	Casing Joints				
5,559.1	5,557.0	0.7				4 1/2	11.60	SeAH-90	7,875.4	7,965.6	90.26	Casing Joints				
6,578.4	6,587.7	0.6					4 1/2	11.60	P-110	7,965.6	7,971.7	6.08	Casing Joints			
6,629.9	6,628.8	0.7				4 1/2	11.60		7,971.7	7,975.6	3.90	Frac Sleeve				
6,747.7	6,739.3	0.8				4 1/2	11.60	P-110	7,975.6	7,977.7	2.10	Casing Joints				
6,845.1	6,839.1	0.5				4 1/2	11.60	SeAH-90	7,977.7	8,068.0	90.26	Casing Joints				
6,942.6	6,942.6	0.5					4 1/2	11.60	P-110	8,068.0	8,073.0	5.00	Casing Joints			
6,954.7	6,954.7	0.6				4 1/2	11.60		8,073.0	8,077.6	4.66	Swell Packer				
7,054.5	7,054.5	0.7				4 1/2	11.60	P-110	8,077.6	8,080.1	2.43	Casing Joints				
7,152.9	7,152.9	0.8				4 1/2	11.60	SeAH-90	8,080.1	8,170.3	90.24	Casing Joints				
7,249.3	7,249.3	0.9					4 1/2	11.60	P-110	8,170.3	8,176.4	6.06	Casing Joints			
7,261.5	7,261.5	0.8				4 1/2	11.60		8,176.4	8,180.2	3.89	Frac Sleeve				
7,361.5	7,361.5	0.7				4 1/2	11.60	P-110	8,180.2	8,182.3	2.06	Casing Joints				
7,459.0	7,459.0	0.5				4 1/2	11.60	SeAH-90	8,182.3	8,272.5	90.24	Casing Joints				
7,556.1	7,556.1	0.8					4 1/2	11.60	P-110	8,272.5	8,277.5	4.99	Casing Joints			
7,568.2	7,568.2	0.8				4 1/2	11.60		8,277.5	8,282.2	4.66	Swell Packer				
7,668.3	7,668.3	0.5				4 1/2	11.60	P-110	8,282.2	8,284.6	2.43	Casing Joints				
7,767.1	7,767.1	0.5				4 1/2	11.60	SeAH-90	8,284.6	8,374.9	90.28	Casing Joints				
7,863.2	7,863.2	0.6					4 1/2	11.60	P-110	8,374.9	8,381.0	6.07	Casing Joints			
7,875.3	7,875.3	0.7				4 1/2	11.60		8,381.0	8,384.9	3.89	Frac Sleeve				
7,975.7	7,975.7	0.8				4 1/2	11.60	P-110	8,384.9	8,387.0	2.09	Casing Joints				
8,072.8	8,072.8	0.6				4 1/2	11.60	SeAH-90	8,387.0	8,477.2	90.27	Casing Joints				
8,170.3	8,170.3	0.6					4 1/2	11.60	P-110	8,477.2	8,482.2	4.99	Casing Joints			
8,182.4	8,182.4	0.5				4 1/2	11.60		8,482.2	8,486.9	4.66	Swell Packer				
8,282.2	8,282.2	0.8				4 1/2	11.60	P-110	8,486.9	8,489.3	2.44	Casing Joints				
8,380.9	8,380.9	0.6				4 1/2	11.60	SeAH-90	8,489.3	8,579.5	90.22	Casing Joints				
8,477.4	8,477.4	0.2					4 1/2	11.60	P-110	8,579.5	8,585.6	6.09	Casing Joints			
8,489.2	8,489.2	0.8				4 1/2	11.60		8,585.6	8,589.5	3.90	Frac Sleeve				
8,589.6	8,589.6	0.8				4 1/2	11.60	P-110	8,589.5	8,591.6	2.10	Casing Joints				
8,686.7	8,686.7	0.7				4 1/2	11.60	SeAH-90	8,591.6	8,681.8	90.22	Casing Joints				
8,784.1	8,784.1	0.6					4 1/2	11.60	P-110	8,681.8	8,686.8	4.99	Casing Joints			
8,796.3	8,796.3	0.7				4 1/2	11.60		8,686.8	8,691.5	4.66	Swell Packer				
8,896.3	8,896.3	0.5				4 1/2	11.60	P-110	8,691.5	8,693.9	2.43	Casing Joints				
8,994.8	8,994.8	0.4				4 1/2	11.60	SeAH-90	8,693.9	8,784.2	90.27	Casing Joints				
9,001.0	9,001.0	0.5					4 1/2	11.60	P-110	8,784.2	8,790.3	6.08	Casing Joints			
9,101.0	9,101.0	0.6				4 1/2	11.60		8,790.3	8,794.2	3.89	Frac Sleeve				
9,199.5	9,199.5	0.7				4 1/2	11.60	P-110	8,794.2	8,796.3	2.10	Casing Joints				
9,295.9	9,295.9	0.7				4 1/2	11.60	SeAH-90	8,796.3	8,886.5	90.25	Casing Joints				
9,308.1	9,308.1	0.5				4 1/2	11.60	P-110	8,886.5	8,891.5	5.00	Casing Joints				
9,408.1	9,408.1	0.8			4 1/2	11.60		8,891.5	8,896.2	4.67	Swell Packer					
9,505.6	9,505.6	0.8			4 1/2	11.60	P-110	8,896.2	8,898.6	2.43	Casing Joints					
9,603.0	9,603.0	0.8			4 1/2	11.60	SeAH-90	8,898.6	8,988.9	90.25	Casing Joints					
9,615.2	9,615.2	0.8				4 1/2	11.60	P-110	8,988.9	8,994.9	6.08	Casing Joints				
9,714.9	9,714.9	0.8			4 1/2	11.60		8,994.9	8,998.8	3.90	Frac Sleeve					
9,813.6	9,813.6	0.7			4 1/2	11.60	P-110	8,998.8	9,000.9	2.10	Casing Joints					
9,910.1	9,910.1	0.2			4 1/2	11.60	SeAH-90	9,000.9	9,091.2	90.29	Casing Joints					
9,922.2	9,922.2	0.4				4 1/2	11.60	P-110								
10,022.3	10,022.3	0.7				4 1/2	11.60	P-110								
10,119.8	10,119.8	0.6				4 1/2	11.60	P-110								
10,217.2	10,217.2	0.6				4 1/2	11.60	P-110								
10,227.0	10,227.0	0.4				4 1/2	11.60	P-110								
10,274.3	10,274.3	0.6				4 1/2	11.60	P-110								
10,323.2	10,323.2	0.8				4 1/2	11.60	P-110								



Lease Review  
Well Name: WILDHORSE 18-1844H

API Number 051233612700				WPC ID 1CO076866				Well Permit Number				Field Name DJ Horizontal Niobrara				County Weld		State CO						
Well Configuration Type Lateral/Horizontal						Orig KB Elv (ft) 5,042.50		Ground Elevation (ft) 5,026.00		Casing Flange Elevation (ft)		Tubing Head Elevation (ft)		Total Depth (ftKB) 10,333.0										
Original Spud Date 2/5/2013			Completion Date 3/8/2013		Asset Group Redtail			Responsible Engineer Andrew Fish			N/S Dist (ft) 320.0		N/S Ref FNL		E/W Dist (ft) 660.0		E/W Ref FEL							
Lot		Quarter 1 NE	Quarter 2 NE	Quarter 3	Quarter 4	Section 18	Section Suffix	Section Type		Township 9 N	Township N/S Dir	Range 59		Range E/W Dir W		Meridian 6TH								
Lateral/Horizontal - Original Hole, 1/12/2015 1:46:03 PM							OD (in)	Wt (lb/ft)	Grade	Top (ftKB)	Btm (ftKB)	Len (ft)	Item Des											
<div><div>MD (ftKB)</div><div>D (ft KB)</div><div>n c l (</div></div>	<div><div>Vertical schematic (actual)</div><div>Logs</div></div>	4 1/2	11.60	P-110	9,091.2	9,096.2	5.00	Casing Joints																
		4 1/2	11.60		9,096.2	9,100.9	4.66	Swell Packer																
		4 1/2	11.60	P-110	9,100.9	9,103.3	2.43	Casing Joints																
		4 1/2	11.60	SeAH-90	9,103.3	9,193.5	90.22	Casing Joints																
		4 1/2	11.60	P-110	9,193.5	9,199.6	6.06	Casing Joints																
		4 1/2	11.60		9,199.6	9,203.5	3.90	Frac Sleeve																
		4 1/2	11.60	P-110	9,203.5	9,205.6	2.08	Casing Joints																
		4 1/2	11.60	SeAH-90	9,205.6	9,295.9	90.31	Casing Joints																
		4 1/2	11.60	P-110	9,295.9	9,300.9	5.00	Casing Joints																
		4 1/2	11.60		9,300.9	9,305.6	4.66	Swell Packer																
		4 1/2	11.60	P-110	9,305.6	9,308.0	2.42	Casing Joints																
		4 1/2	11.60	SeAH-90	9,308.0	9,398.2	90.26	Casing Joints																
		4 1/2	11.60	P-110	9,398.2	9,404.3	6.08	Casing Joints																
		4 1/2	11.60		9,404.3	9,408.2	3.90	Frac Sleeve																
		4 1/2	11.60	P-110	9,408.2	9,410.3	2.09	Casing Joints																
		4 1/2	11.60	SeAH-90	9,410.3	9,500.5	90.23	Casing Joints																
		4 1/2	11.60	P-110	9,500.5	9,505.5	5.01	Casing Joints																
		4 1/2	11.60		9,505.5	9,510.2	4.64	Swell Packer																
		4 1/2	11.60	P-110	9,510.2	9,512.6	2.43	Casing Joints																
		4 1/2	11.60	SeAH-90	9,512.6	9,602.9	90.28	Casing Joints																
			4 1/2	11.60	P-110	9,602.9	9,609.0	6.09	Casing Joints															
			4 1/2	11.60		9,609.0	9,612.9	3.91	Frac Sleeve															
			4 1/2	11.60	P-110	9,612.9	9,615.0	2.11	Casing Joints															
			4 1/2	11.60	SeAH-90	9,615.0	9,705.3	90.28	Casing Joints															
			4 1/2	11.60	P-110	9,705.3	9,710.3	5.00	Casing Joints															
			4 1/2	11.60		9,710.3	9,715.0	4.67	Swell Packer															
			4 1/2	11.60	P-110	9,715.0	9,717.4	2.42	Casing Joints															
			4 1/2	11.60	SeAH-90	9,717.4	9,807.7	90.31	Casing Joints															
			4 1/2	11.60	P-110	9,807.7	9,813.8	6.08	Casing Joints															
			4 1/2	11.60		9,813.8	9,817.7	3.90	Frac Sleeve															
			4 1/2	11.60	P-110	9,817.7	9,819.8	2.10	Casing Joints															
			4 1/2	11.60	SeAH-90	9,819.8	9,910.1	90.30	Casing Joints															
			4 1/2	11.60	P-110	9,910.1	9,915.1	5.00	Casing Joints															
			4 1/2	11.60		9,915.1	9,919.7	4.66	Swell Packer															
			4 1/2	11.60	P-110	9,919.7	9,922.1	2.42	Casing Joints															
			4 1/2	11.60	SeAH-90	9,922.1	10,012.4	90.29	Casing Joints															
			4 1/2	11.60	P-110	10,012.4	10,018.5	6.09	Casing Joints															
			4 1/2	11.60		10,018.5	10,022.4	3.90	Frac Sleeve															
			4 1/2	11.60	P-110	10,022.4	10,024.5	2.09	Casing Joints															
			4 1/2	11.60	SeAH-90	10,024.5	10,114.8	90.26	Casing Joints															
			4 1/2	11.60	P-110	10,114.8	10,119.8	5.00	Casing Joints															
			4 1/2	11.60		10,119.8	10,124.4	4.66	Swell Packer															
			4 1/2	11.60	P-110	10,124.4	10,126.9	2.42	Casing Joints															
			4 1/2	11.60	SeAH-90	10,126.9	10,217.2	90.31	Casing Joints															
			4 1/2	11.60	P-110	10,217.2	10,223.3	6.09	Casing Joints															
			4 1/2	11.60		10,223.3	10,227.2	3.90	Frac Sleeve															
			4 1/2	11.60	P-110	10,227.2	10,229.3	2.10	Casing Joints															
			4 1/2	11.60	SeAH-90	10,229.3	10,274.4	45.14	Casing Joints															
			4 1/2	11.60	SeAH-90	10,274.4	10,275.4	0.96	Float Collar															
			4 1/2	11.60	SeAH-90	10,275.4	10,320.5	45.12	Casing Joints															
			4 1/2	11.60	SeAH-90	10,320.5	10,323.0	2.53	Float Shoe															
			Cement Stages																					
			Des		Pump Start Date		Drill Out Date		Top (ftKB)		Btm (ftKB)		Top Meas Meth											
			Conductor Cement		2/4/2013				16.5		80.0													
			Surface Casing Cement		2/6/2013				16.5		1,820.3		Returns to Surface											
			Intermediate Casing Cement		2/11/2013				16.5		6,619.7		Returns to Surface											

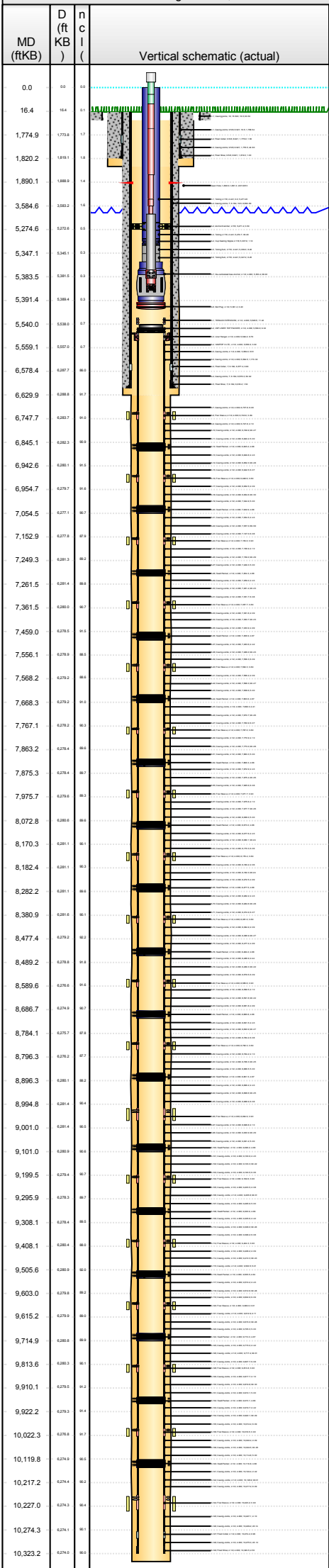




Lease Review  
Well Name: WILDHORSE 18-1844H

API Number 051233612700		WPC ID 1CO076866		Well Permit Number		Field Name DJ Horizontal Niobrara		County Weld		State CO		
Well Configuration Type Lateral/Horizontal			Orig KB Elv (ft) 5,042.50		Ground Elevation (ft) 5,026.00		Casing Flange Elevation (ft)		Tubing Head Elevation (ft)		Total Depth (ftKB) 10,333.0	
Original Spud Date 2/5/2013		Completion Date 3/8/2013		Asset Group Redtail		Responsible Engineer Andrew Fish		N/S Dist (ft) 320.0		N/S Ref FNL	E/W Dist (ft) 660.0	E/W Ref FEL
Lot	Quarter 1 NE	Quarter 2 NE	Quarter 3	Quarter 4	Section 18	Section Suffix	Section Type	Township 9 N	Township N/S Dir	Range 59	Range E/W Dir W	Meridian 6TH

Lateral/Horizontal - Original Hole, 1/12/2015 1:46:03 PM



Perforations

Type of Hole		Date	Top (ftKB)	Btm (ftKB)	Zone	
Open Hole		2/21/2013	1,890.0	1,891.0	Pierre, Original Hole	
Sand Frac on 3/4/2013 06:00						
Comment Treatment End Date:3/6/2013; Number of staged intervals: 18; Number of sleeves: 18; 46688 bbl 24# pHaserFrac XL Gel, 9679 bbl 24# Linear Gel, 26643 bbl Slickwater				Min Top De... 6,743.9	Max Btm D... 10,227.2	Frac Length (ft) 3,703.00
Stim/Treat Fluids						
24# pHaserFrac XL Gel; 24# Linear Gel, <fluidtyp>						
Proppant Frm (lb)	Total Clean Vol...	Avg Treat Rate...	Max Treat Rate...	Avg Treat Press...	P Max (psi)	Frac Gradient (p...
4,487,966.0	83010.75	49.70	53.30	4,035.0	6,371.0	
Stim/Treat Stages						
Stg #	Start Date	Top Depth (ftKB)	Bottom Depth (ftKB)	Vol Clean Pump (bbl)	Vol Slurry (bbl)	
1	3/4/2013	10,223.3	10,227.2	6100.80		
Additive Proppant	Type 20/40 CRC	Amount 21,175.0	Units lb	Sand Size 20/40		
Additive Proppant	Type 20/40 Ottawa	Amount 200,172.0	Units lb	Sand Size 20/40		
Additive Proppant	Type 40/70 Ottawa	Amount 24,580.0	Units lb	Sand Size 40/70		
Stg #	Start Date	Top Depth (ftKB)	Bottom Depth (ftKB)	Vol Clean Pump (bbl)	Vol Slurry (bbl)	
2	3/4/2013	10,018.5	10,022.4	2976.12		
Additive Proppant	Type 20/40 CRC	Amount 12,616.0	Units lb	Sand Size 20/40		
Additive Proppant	Type 20/40 Ottawa	Amount 101,265.0	Units lb	Sand Size 20/40		
Additive Proppant	Type 40/70 Ottawa	Amount 5,350.0	Units lb	Sand Size 40/70		
Stg #	Start Date	Top Depth (ftKB)	Bottom Depth (ftKB)	Vol Clean Pump (bbl)	Vol Slurry (bbl)	
3	3/4/2013	9,813.8	9,817.7	4410.83		
Additive Proppant	Type 20/40 CRC	Amount 20,150.0	Units lb	Sand Size 20/40		
Additive Proppant	Type 20/40 Ottawa	Amount 194,227.0	Units lb	Sand Size 20/40		
Additive Proppant	Type 40/70 Ottawa	Amount 11,643.0	Units lb	Sand Size 40/70		
Stg #	Start Date	Top Depth (ftKB)	Bottom Depth (ftKB)	Vol Clean Pump (bbl)	Vol Slurry (bbl)	
4	3/4/2013	9,609.0	9,612.9	4333.79		
Additive Proppant	Type 20/40 Ottawa	Amount 199,817.0	Units lb	Sand Size 20/40		
Additive Proppant	Type 40/70 Ottawa	Amount 11,510.0	Units lb	Sand Size 40/70		
Stg #	Start Date	Top Depth (ftKB)	Bottom Depth (ftKB)	Vol Clean Pump (bbl)	Vol Slurry (bbl)	
5	3/4/2013	9,404.3	9,408.2	4397.79		
Additive Proppant	Type 20/40 CRC	Amount 21,259.0	Units lb	Sand Size 20/40		
Additive Proppant	Type 20/40 Ottawa	Amount 192,689.0	Units lb	Sand Size 20/40		
Additive Proppant	Type 40/70 Ottawa	Amount 9,462.0	Units lb	Sand Size 40/70		
Stg #	Start Date	Top Depth (ftKB)	Bottom Depth (ftKB)	Vol Clean Pump (bbl)	Vol Slurry (bbl)	
6	3/4/2013	9,199.6	9,203.5	4369.55		
Additive Proppant	Type 20/40 CRC	Amount 20,766.0	Units lb	Sand Size 20/40		
Additive Proppant	Type 20/40 Ottawa	Amount 199,811.0	Units lb	Sand Size 20/40		
Additive Proppant	Type 40/70 Ottawa	Amount 12,767.0	Units lb	Sand Size 40/70		
Stg #	Start Date	Top Depth (ftKB)	Bottom Depth (ftKB)	Vol Clean Pump (bbl)	Vol Slurry (bbl)	
7	3/4/2013	8,994.9	8,998.8	4424.05		
Additive Proppant	Type 20/40 CRC	Amount 22,248.0	Units lb	Sand Size 20/40		
Additive Proppant	Type 20/40 Ottawa	Amount 199,610.0	Units lb	Sand Size 20/40		
Additive Proppant	Type 40/70 Ottawa	Amount 14,727.0	Units lb	Sand Size 40/70		
Stg #	Start Date	Top Depth (ftKB)	Bottom Depth (ftKB)	Vol Clean Pump (bbl)	Vol Slurry (bbl)	
8	3/4/2013	8,790.3	8,794.2	4502.29		
Additive Proppant	Type 20/40 Ottawa	Amount 196,606.0	Units lb	Sand Size 20/40		
Additive Proppant	Type 40/70 Ottawa	Amount 13,881.0	Units lb	Sand Size 40/70		
Stg #	Start Date	Top Depth (ftKB)	Bottom Depth (ftKB)	Vol Clean Pump (bbl)	Vol Slurry (bbl)	
9	3/4/2013	8,585.6	8,589.5	4404.90		
Additive Proppant	Type 20/40 CRC	Amount 19,409.0	Units lb	Sand Size 20/40		
Additive Proppant	Type 20/40 Ottawa	Amount 192,425.0	Units lb	Sand Size 20/40		
Additive Proppant	Type 40/70 Ottawa	Amount 9,683.0	Units lb	Sand Size 40/70		
Stg #	Start Date	Top Depth (ftKB)	Bottom Depth (ftKB)	Vol Clean Pump (bbl)	Vol Slurry (bbl)	
10	3/5/2013	8,381.0	8,384.9	4783.38		
Additive Proppant	Type 20/40 CRC	Amount 20,921.0	Units lb	Sand Size 20/40		
Additive Proppant	Type 20/40 Ottawa	Amount 238,064.0	Units lb	Sand Size 20/40		
Additive Proppant	Type 40/70 Ottawa	Amount 9,809.0	Units lb	Sand Size 40/70		
Stg #	Start Date	Top Depth (ftKB)	Bottom Depth (ftKB)	Vol Clean Pump (bbl)	Vol Slurry (bbl)	
11	3/5/2013	8,176.4	8,180.2	4783.02		
Additive Proppant	Type 20/40 CRC	Amount 23,470.0	Units lb	Sand Size 20/40		
Additive Proppant	Type 20/40 Ottawa	Amount 240,130.0	Units lb	Sand Size 20/40		



Lease Review  
Well Name: WILDHORSE 18-1844H

API Number 051233612700				WPC ID 1CO076866				Well Permit Number				Field Name DJ Horizontal Niobrara				County Weld		State CO							
Well Configuration Type Lateral/Horizontal						Orig KB Elv (ft) 5,042.50		Ground Elevation (ft) 5,026.00		Casing Flange Elevation (ft)				Tubing Head Elevation (ft)		Total Depth (ftKB) 10,333.0									
Original Spud Date 2/5/2013				Completion Date 3/8/2013		Asset Group Redtail		Responsible Engineer Andrew Fish				N/S Dist (ft) 320.0		N/S Ref FNL		E/W Dist (ft) 660.0		E/W Ref FEL							
Lot		Quarter 1 NE		Quarter 2 NE		Quarter 3		Quarter 4		Section 18		Section Suffix		Section Type		Township 9 N		Township N/S Dir		Range 59		Range E/W Dir W		Meridian 6TH	
Lateral/Horizontal - Original Hole, 1/12/2015 1:46:03 PM										Additive Proppant				Type 40/70 Ottawa				Amount 13,788.0		Units lb		Sand Size 40/70			
MD (ftKB)		D (ft KB)		n (ft KB)		c (ft KB)		l (ft KB)		Vertical schematic (actual)		Logs		Stg # 12		Start Date 3/5/2013		Top Depth (ftKB) 7,971.7		Bottom Depth (ftKB) 7,975.6		Vol Clean Pump (bbl) 4769.55		Vol Slurry (bbl)	
0.0		0.0		0.0										Additive Proppant		Type 20/40 CRC		Amount 22,254.0		Units lb		Sand Size 20/40			
16.4		16.4		0.1										Additive Proppant		Type 20/40 Ottawa		Amount 257,531.0		Units lb		Sand Size 20/40			
1,774.9		1,775.8		1.7										Additive Proppant		Type 40/70 Ottawa		Amount 16,731.0		Units lb		Sand Size 40/70			
1,820.2		1,819.1		1.8										Stg # 13		Start Date 3/5/2013		Top Depth (ftKB) 7,767.0		Bottom Depth (ftKB) 7,770.9		Vol Clean Pump (bbl) 4927.40		Vol Slurry (bbl)	
1,890.1		1,889.9		1.4										Additive Proppant		Type 20/40 CRC		Amount 21,057.0		Units lb		Sand Size 20/40			
3,584.6		3,583.2		1.6										Additive Proppant		Type 20/40 Ottawa		Amount 257,637.0		Units lb		Sand Size 20/40			
5,274.6		5,275.5		0.9										Additive Proppant		Type 40/70 Ottawa		Amount 19,598.0		Units lb		Sand Size 40/70			
5,347.1		5,346.1		0.2										Stg # 14		Start Date 3/6/2013		Top Depth (ftKB) 7,562.3		Bottom Depth (ftKB) 7,566.2		Vol Clean Pump (bbl) 4780.17		Vol Slurry (bbl)	
5,383.5		5,381.5		0.2										Additive Proppant		Type 20/40 CRC		Amount 22,024.0		Units lb		Sand Size 20/40			
5,391.4		5,389.4		0.2										Additive Proppant		Type 20/40 Ottawa		Amount 252,347.0		Units lb		Sand Size 20/40			
5,540.0		5,538.0		0.7										Additive Proppant		Type 40/70 Ottawa		Amount 17,070.0		Units lb		Sand Size 40/70			
5,559.1		5,557.0		0.7										Stg # 15		Start Date 3/6/2013		Top Depth (ftKB) 7,357.7		Bottom Depth (ftKB) 7,361.6		Vol Clean Pump (bbl) 4748.83		Vol Slurry (bbl)	
6,578.4		6,577.7		0.8										Additive Proppant		Type 20/40 CRC		Amount 24,296.0		Units lb		Sand Size 20/40			
6,629.9		6,628.8		0.7										Additive Proppant		Type 20/40 Ottawa		Amount 238,305.0		Units lb		Sand Size 20/40			
6,747.7		6,746.7		0.9										Additive Proppant		Type 40/70 Ottawa		Amount 14,488.0		Units lb		Sand Size 40/70			
6,845.1		6,843.3		0.8										Stg # 16		Start Date 3/6/2013		Top Depth (ftKB) 7,153.0		Bottom Depth (ftKB) 7,156.9		Vol Clean Pump (bbl) 4743.83		Vol Slurry (bbl)	
6,942.6		6,940.1		0.5										Additive Proppant		Type 20/40 CRC		Amount 20,492.0		Units lb		Sand Size 20/40			
6,954.7		6,952.7		0.6										Additive Proppant		Type 20/40 Ottawa		Amount 245,670.0		Units lb		Sand Size 20/40			
7,054.5		7,052.7		0.2										Additive Proppant		Type 40/70 Ottawa		Amount 13,057.0		Units lb		Sand Size 40/70			
7,152.9		7,151.0		0.9										Stg # 17		Start Date 3/6/2013		Top Depth (ftKB) 6,948.6		Bottom Depth (ftKB) 6,952.5		Vol Clean Pump (bbl) 4735.33		Vol Slurry (bbl)	
7,249.3		7,247.3		0.9										Additive Proppant		Type 20/40 CRC		Amount 20,970.0		Units lb		Sand Size 20/40			
7,261.5		7,259.5		0.8										Additive Proppant		Type 20/40 Ottawa		Amount 254,791.0		Units lb		Sand Size 20/40			
7,361.5		7,359.5		0.7										Additive Proppant		Type 40/70 Ottawa		Amount 13,732.0		Units lb		Sand Size 40/70			
7,459.0		7,457.0		0.5										Stg # 18		Start Date 3/6/2013		Top Depth (ftKB) 6,743.9		Bottom Depth (ftKB) 6,747.8		Vol Clean Pump (bbl) 4819.12		Vol Slurry (bbl)	
7,556.1		7,554.0		0.8										Additive Proppant		Type 20/40 CRC		Amount 25,042.0		Units lb		Sand Size 20/40			
7,568.2		7,566.2		0.8										Additive Proppant		Type 20/40 Ottawa		Amount 240,069.0		Units lb		Sand Size 20/40			
7,668.3		7,666.3		0.9										Additive Proppant		Type 40/70 Ottawa		Amount 16,775.0		Units lb		Sand Size 40/70			
7,767.1		7,765.1		0.9										Stg # 19		Start Date 3/6/2013		Top Depth (ftKB) 6,743.9		Bottom Depth (ftKB) 6,747.8		Vol Clean Pump (bbl) 4819.12		Vol Slurry (bbl)	
7,863.2		7,861.2		0.8										Additive Proppant		Type 20/40 CRC		Amount 25,042.0		Units lb		Sand Size 20/40			
7,875.3		7,873.3		0.9										Additive Proppant		Type 20/40 Ottawa		Amount 240,069.0		Units lb		Sand Size 20/40			
7,975.7		7,973.7		0.9										Additive Proppant		Type 40/70 Ottawa		Amount 16,775.0		Units lb		Sand Size 40/70			
8,072.8		8,070.8		0.8										Stg # 20		Start Date 3/6/2013		Top Depth (ftKB) 6,743.9		Bottom Depth (ftKB) 6,747.8		Vol Clean Pump (bbl) 4819.12		Vol Slurry (bbl)	
8,170.3		8,168.3		0.9										Additive Proppant		Type 20/40 CRC		Amount 25,042.0		Units lb		Sand Size 20/40			
8,182.4		8,180.4		0.9										Additive Proppant		Type 20/40 Ottawa		Amount 240,069.0		Units lb		Sand Size 20/40			
8,282.2		8,281.1		0.8										Additive Proppant		Type 40/70 Ottawa		Amount 16,775.0		Units lb		Sand Size 40/70			
8,380.9		8,379.0		0.7										Stg # 21		Start Date 3/6/2013		Top Depth (ftKB) 6,743.9		Bottom Depth (ftKB) 6,747.8		Vol Clean Pump (bbl) 4819.12		Vol Slurry (bbl)	
8,477.4		8,475.2		0.2										Additive Proppant		Type 20/40 CRC		Amount 25,042.0		Units lb		Sand Size 20/40			
8,489.2		8,487.0		0.6										Additive Proppant		Type 20/40 Ottawa		Amount 240,069.0		Units lb		Sand Size 20/40			
8,589.6		8,587.4		0.6										Additive Proppant		Type 40/70 Ottawa		Amount 16,775.0		Units lb		Sand Size 40/70			
8,686.7		8,684.5		0.7										Stg # 22		Start Date 3/6/2013		Top Depth (ftKB) 6,743.9		Bottom Depth (ftKB) 6,747.8		Vol Clean Pump (bbl) 4819.12		Vol Slurry (bbl)	
8,784.1		8,781.7		0.6										Additive Proppant		Type 20/40 CRC		Amount 25,042.0		Units lb		Sand Size 20/40			
8,796.3		8,793.2		0.7										Additive Proppant		Type 20/40 Ottawa		Amount 240,069.0		Units lb		Sand Size 20/40			
8,896.3		8,893.1		0.8										Additive Proppant		Type 40/70 Ottawa		Amount 16,775.0		Units lb		Sand Size 40/70			
8,994.8		8,991.4		0.4										Stg # 23		Start Date 3/6/2013		Top Depth (ftKB) 6,743.9		Bottom Depth (ftKB) 6,747.8		Vol Clean Pump (bbl) 4819.12		Vol Slurry (bbl)	
9,001.0		8,997.4		0.5										Additive Proppant		Type 20/40 CRC		Amount 25,042.0		Units lb		Sand Size 20/40			
9,101.0		9,097.3		0.6										Additive Proppant		Type 20/40 Ottawa		Amount 240,069.0		Units lb		Sand Size 20/40			
9,199.5		9,195.4		0.7										Additive Proppant		Type 40/70 Ottawa		Amount 16,775.0		Units lb		Sand Size 40/70			
9,295.9		9,291.3		0.7										Stg # 24		Start Date 3/6/2013		Top Depth (ftKB) 6,743.9		Bottom Depth (ftKB) 6,747.8		Vol Clean Pump (bbl) 4819.12		Vol Slurry (bbl)	
9,308.1		9,303.4		0.8										Additive Proppant		Type 20/40 CRC		Amount 25,042.0		Units lb		Sand Size 20/40			
9,408.1		9,403.4		0.8										Additive Proppant		Type 20/40 Ottawa		Amount 240,069.0		Units lb		Sand Size 20/40			
9,505.6		9,500.8		0.9										Additive Proppant		Type 40/70 Ottawa		Amount 16,775.0		Units lb		Sand Size 40/70			
9,603.0		9,598.2		0.9										Stg # 25		Start Date 3/6/2013		Top Depth (ftKB) 6,743.9		Bottom Depth (ftKB) 6,747.8		Vol Clean Pump (bbl) 4819.12		Vol Slurry (bbl)	
9,615.2		9,610.3		0.9										Additive Proppant		Type 20/40 CRC		Amount 25,042.0		Units lb		Sand Size 20/40			
9,714.9		9,709.8		0.9										Additive Proppant		Type 20/40 Ottawa		Amount 240,069.0		Units lb		Sand Size 20/40			
9,813.6		9,808.3		0.7										Additive Proppant		Type 40/70 Ottawa		Amount 16,775.0		Units lb		Sand Size 40/70			
9,910.1		9,904.2		0.2										Stg # 26		Start Date 3/6/2013		Top Depth (ftKB) 6,743.9		Bottom Depth (ftKB) 6,747.8		Vol Clean Pump (bbl) 4819.12		Vol Slurry (bbl)	
9,922.2		9,916.3		0.4										Additive Proppant		Type 20/40 CRC		Amount 25,042.0		Units lb		Sand Size 20/40			
10,022.3		10,016.4		0.7										Additive Proppant		Type 20/40 Ottawa		Amount 240,069.0		Units lb		Sand Size 20/40			
10,119.8		10,113.9		0.8										Additive Proppant		Type 40/70 Ottawa		Amount 16,775.0		Units lb		Sand Size 40/70			
10,217.2		10,211.3		0.2										Stg # 27		Start Date 3/6/2013		Top Depth (ftKB) 6,743.9		Bottom Depth (ftKB) 6,747.8		Vol Clean Pump (bbl) 4819.12		Vol Slurry (bbl)	
10,227.0		10,221.1		0.4										Additive Proppant		Type 20/40 CRC		Amount 25,042.0		Units lb		Sand Size 20/40			
10,274.3		10,268.4		0.1										Additive Proppant		Type 20/40 Ottawa		Amount 240,069.0		Units lb		Sand Size 20/40			
10,323.2		10,317.3		0.8										Additive Proppant		Type 40/70 Ottawa		Amount 16,775.0		Units lb		Sand Size 40/70			

Tubing - Production set at 5,391.9ftKB on 10/17/2013 00:00													
Set Depth (ftKB) 5,391.9		Comment				Run Date 10/17/2013		Pull Date					
Item Des		OD (in)		ID (in)		Len (ft)		Top (ftKB)		Btm (ftKB)			
Tubing		2 7/8		2.441		5,271.20		0.0		5,271.2			
Anchor/Catcher		2 7/8				3.50		5,271.2		5,274.7			
Tubing		2 7/8		2.441		63.20		5,274.7		5,337.9			
Cup Seating Nipple		2 7/8				1.10		5,337.9		5,339.0			
Tubing Sub		2 7/8		2.441		8.20		5,339.0		5,347.2			
Tubing Sub		2 7/8		2.441		6.25		5,347.2		5,353.5			
De-centralized Gas Anchor		4 1/2		4.000		38.00		5,353.5		5,391.5			
Bull Plug		4 1/2				0.40		5,391.5		5,391.9			
Rod Strings													
Rod Description D Rod						Run Date 10/18/2013			Pull Date				
Item Des						OD (in)		Len (ft)		Top (ftKB)		Btm (ftKB)	
Polished Rod						1 1/2		26.00		-26.5		-0.5	
Pony Rod						1		2.00		-0.5		1.5	
Pony Rod						1		8.00		1.5		9.5	
Sucker Rod Plain						1		450.00		9.5		459.5	
Sucker Rod Guided 4 per rod						1							



Lease Review  
Well Name: WILDHORSE 18-1844H

API Number 051233612700		WPC ID 1CO076866		Well Permit Number		Field Name DJ Horizontal Niobrara			County Weld		State CO			
Well Configuration Type Lateral/Horizontal				Orig KB Elv (ft) 5,042.50		Ground Elevation (ft) 5,026.00		Casing Flange Elevation (ft)		Tubing Head Elevation (ft)		Total Depth (ftKB) 10,333.0		
Original Spud Date 2/5/2013		Completion Date 3/8/2013		Asset Group Redtail			Responsible Engineer Andrew Fish			N/S Dist (ft) 320.0		N/S Ref FNL	E/W Dist (ft) 660.0	E/W Ref FEL
Lot	Quarter 1 NE	Quarter 2 NE	Quarter 3	Quarter 4	Section 18	Section Suffix	Section Type	Township 9 N	Township N/S Dir	Range 59	Range E/W Dir W	Meridian 6TH		

Lateral/Horizontal - Original Hole, 1/12/2015 1:46:04 PM				Item Des	OD (in)	Len (ft)	Top (ftKB)	Btm (ftKB)	
MD (ftKB)	D (ft KB )	n ( ft KB )	c ( ft KB )	Other In Hole					
				Des	OD (in)	Run Date	Pull Date	Top (ftKB)	Btm (ftKB)
				Retrievable Bridge Plug	6.4	2/21/2013	2/20/2013	5,470.0	5,472.0
Bottom Hole Cores									
Date				Core #	Top (ftKB)	Btm (ftKB)	Recov (ft)		
Vertical schematic (actual)				Logs					
0.0	0.0	0.0							
16.4	16.4	0.1							
1,774.9	1,775.8	1.7							
1,820.2	1,819.1	1.8							
1,890.1	1,889.9	1.4							
3,584.6	3,583.2	1.6							
5,274.6	5,275.8	0.5							
5,347.1	5,345.1	0.3							
5,383.5	5,381.5	0.3							
5,391.4	5,389.4	0.3							
5,540.0	5,539.0	0.7							
5,559.1	5,557.0	0.7							
6,578.4	6,577.7	0.6							
6,629.9	6,628.8	0.7							
6,747.7	6,746.7	0.6							
6,845.1	6,843.3	0.6							
6,942.6	6,940.1	0.5							
6,954.7	6,952.7	0.6							
7,054.5	7,052.7	0.7							
7,152.9	7,151.8	0.6							
7,249.3	7,248.2	0.6							
7,261.5	7,260.4	0.6							
7,361.5	7,360.0	0.7							
7,459.0	7,457.5	0.5							
7,556.1	7,554.3	0.6							
7,568.2	7,566.2	0.6							
7,668.3	7,666.3	0.6							
7,767.1	7,765.2	0.6							
7,863.2	7,861.4	0.6							
7,875.3	7,873.4	0.7							
7,975.7	7,973.8	0.6							
8,072.8	8,070.0	0.6							
8,170.3	8,168.1	0.7							
8,182.4	8,180.1	0.6							
8,282.2	8,281.1	0.6							
8,380.9	8,379.0	0.6							
8,477.4	8,475.2	0.6							
8,489.2	8,486.8	0.6							
8,589.6	8,586.8	0.6							
8,686.7	8,683.8	0.7							
8,784.1	8,781.7	0.6							
8,796.3	8,793.7	0.7							
8,896.3	8,893.1	0.6							
8,994.8	8,991.4	0.6							
9,001.0	8,998.4	0.6							
9,101.0	9,098.0	0.6							
9,199.5	9,196.4	0.7							
9,295.9	9,292.3	0.7							
9,308.1	9,304.4	0.6							
9,408.1	9,404.4	0.6							
9,505.6	9,500.9	0.6							
9,603.0	9,598.3	0.6							
9,615.2	9,610.5	0.6							
9,714.9	9,709.8	0.6							
9,813.6	9,808.3	0.6							
9,910.1	9,904.2	0.6							
9,922.2	9,916.3	0.4							
10,022.3	10,016.4	0.7							
10,119.8	10,113.9	0.6							
10,217.2	10,211.4	0.6							
10,227.0	10,221.3	0.4							
10,274.3	10,274.1	0.1							
10,323.2	10,323.0	0.0							