

# Whiting Oil & Gas

Well Name: **Wildhorse #18-1844H**

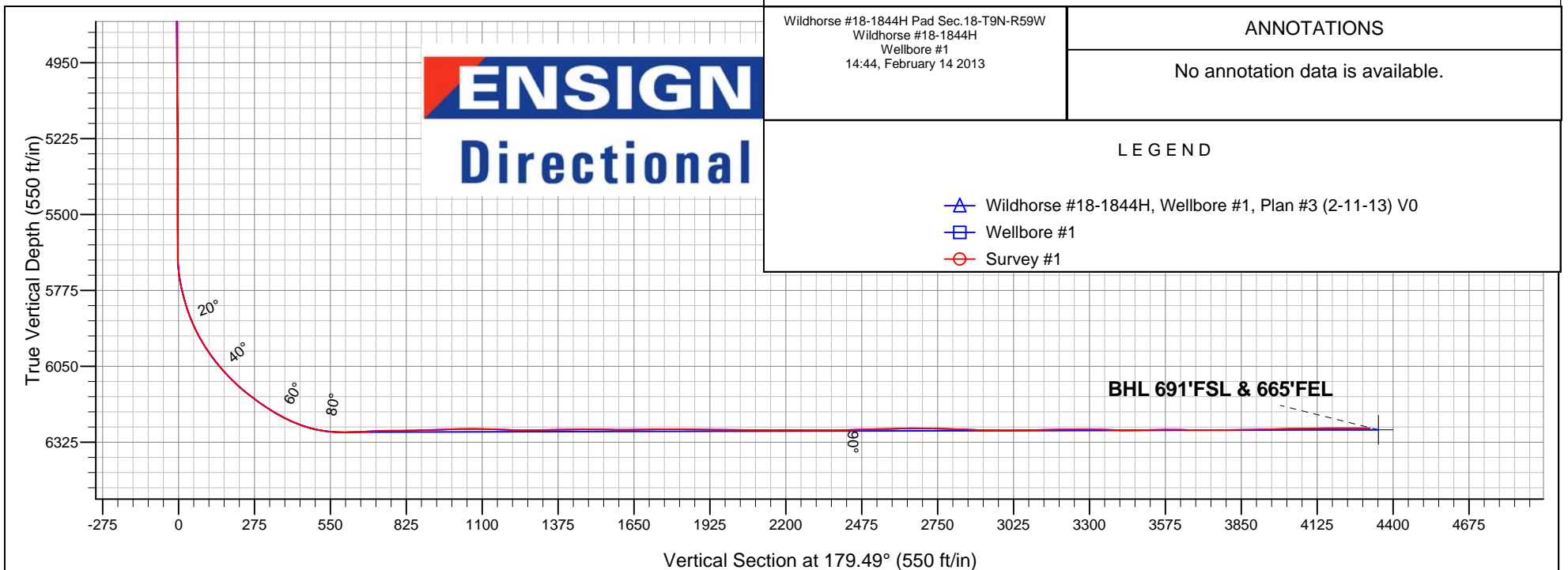
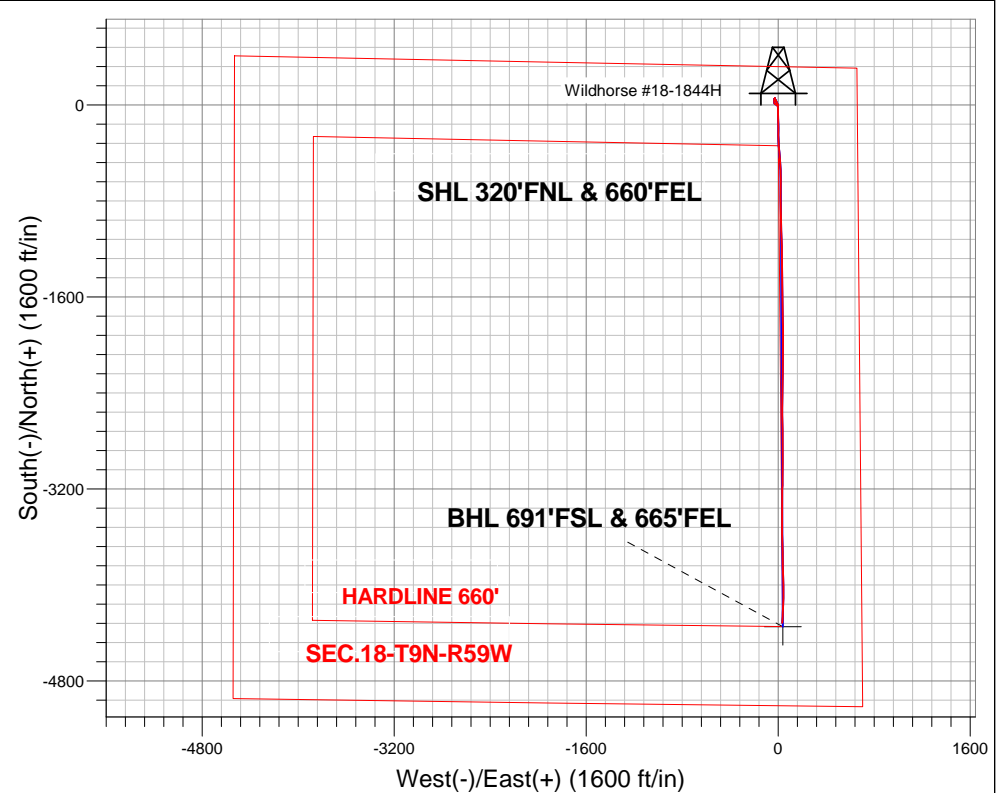
Surface Location: Wildhorse #18-1844H Pad Sec.18-T9N-R59W  
North American Datum 1983 , US State Plane 1983 , Colorado Northern Zone  
Ground Elevation: 5026.1

+N/-S	+E/-W	Northing	Easting	Latitude	Longitude	Slot
0.0	0.0	1522028.03	3411659.71	40.756886	-104.014031	

RKB Ensign 14 - 15' WELL @ 5041.1ft (RKB Ensign 14 - 15')

## FINAL SURVEY

Projected Bottom Hole Location  
10333' MD 6275' TVD 4316' S & 33' E of SHL  
90.0 degree Incl @ 183.3 degree AZM





## **Whiting Oil & Gas**

**SEC.18-T9N-R59W**

**Wildhorse #18-1844H Pad Sec.18-T9N-R59W**

**Wildhorse #18-1844H**

**Wellbore #1**

**Survey: Survey #1**

## **Standard Survey Report**

**14 February, 2013**

Survey	Wellbore Data									
	Measured Depth (ft)	Inclination (°)	Azimuth (°)	Vertical Depth (ft)	+N/-S (ft)	+E/-W (ft)	Vertical Section (ft)	Dogleg Rate (°/100ft)	Build Rate (°/100ft)	Turn Rate (°/100ft)
Survey Data	0.0	0.00	0.00	0.0	0.0	0.0	0.0	0.00	0.00	0.00
	187.0	1.20	331.10	187.0	1.7	-0.9	-1.7	0.64	0.64	0.00
	285.0	1.80	337.10	285.0	4.0	-2.0	-4.0	0.63	0.61	6.12
	377.0	2.10	319.90	376.9	6.7	-3.7	-6.7	0.71	0.33	-18.70
	468.0	2.20	330.30	467.8	9.4	-5.6	-9.5	0.44	0.11	11.43
	559.0	2.30	332.20	558.8	12.6	-7.3	-12.6	0.14	0.11	2.09
	651.0	2.50	336.60	650.7	16.1	-9.0	-16.1	0.30	0.22	4.78
	744.0	2.60	340.80	743.6	19.9	-10.5	-20.0	0.23	0.11	4.52
	840.0	2.10	335.90	839.5	23.6	-11.9	-23.7	0.56	-0.52	-5.10
	934.0	2.40	331.70	933.4	26.9	-13.6	-27.0	0.36	0.32	-4.47
	1,062.0	2.70	335.50	1,061.3	32.0	-16.1	-32.1	0.27	0.23	2.97
	1,125.0	2.90	332.70	1,124.2	34.7	-17.4	-34.9	0.38	0.32	-4.44
	1,252.0	2.20	333.10	1,251.1	39.8	-20.0	-39.9	0.55	-0.55	0.31

<b>Company:</b>	Whiting Oil & Gas	<b>Local Co-ordinate Reference:</b>	Well Wildhorse #18-1844H
<b>Project:</b>	SEC.18-T9N-R59W	<b>TVD Reference:</b>	WELL @ 5041.1ft (RKB Ensign 14 - 15')
<b>Site:</b>	Wildhorse #18-1844H Pad Sec.18-T9N-R59W	<b>MD Reference:</b>	WELL @ 5041.1ft (RKB Ensign 14 - 15')
<b>Well:</b>	Wildhorse #18-1844H	<b>North Reference:</b>	True
<b>Wellbore:</b>	Wellbore #1	<b>Survey Calculation Method:</b>	Minimum Curvature
<b>Design:</b>	Wellbore #1	<b>Database:</b>	Landmark

Survey										
Measured Depth (ft)	Inclination (°)	Azimuth (°)	Vertical Depth (ft)	+N/-S (ft)	+E/-W (ft)	Vertical Section (ft)	Dogleg Rate (°/100ft)	Build Rate (°/100ft)	Turn Rate (°/100ft)	
1,347.0	1.50	325.50	1,346.1	42.4	-21.5	-42.6	0.78	-0.74	-8.00	
1,441.0	1.60	338.50	1,440.0	44.7	-22.7	-44.9	0.39	0.11	13.83	
1,535.0	1.50	314.80	1,534.0	46.7	-24.1	-47.0	0.69	-0.11	-25.21	
1,629.0	1.50	336.90	1,628.0	48.7	-25.4	-49.0	0.61	0.00	23.51	
1,724.0	1.90	329.60	1,722.9	51.2	-26.7	-51.5	0.48	0.42	-7.68	
1,785.0	1.70	341.70	1,783.9	53.0	-27.5	-53.2	0.70	-0.33	19.84	
1,854.0	1.80	0.60	1,852.9	55.0	-27.8	-55.3	0.84	0.14	27.39	
1,945.0	0.90	195.70	1,943.8	55.8	-28.0	-56.0	2.94	-0.99	-181.21	
2,038.0	0.70	184.10	2,036.8	54.5	-28.2	-54.7	0.28	-0.22	-12.47	
2,131.0	1.00	181.20	2,129.8	53.1	-28.3	-53.4	0.33	0.32	-3.12	
2,226.0	0.50	178.20	2,224.8	51.9	-28.3	-52.1	0.53	-0.53	-3.16	
2,321.0	0.50	153.60	2,319.8	51.1	-28.1	-51.3	0.22	0.00	-25.89	
2,416.0	0.10	218.40	2,414.8	50.7	-28.0	-50.9	0.49	-0.42	68.21	
2,511.0	0.40	56.40	2,509.8	50.8	-27.7	-51.0	0.52	0.32	-170.53	
2,606.0	0.40	331.80	2,604.8	51.3	-27.6	-51.5	0.57	0.00	-89.05	
2,701.0	0.50	234.90	2,699.8	51.3	-28.1	-51.6	0.71	0.11	-102.00	
2,795.0	0.70	219.50	2,793.8	50.6	-28.8	-50.9	0.27	0.21	-16.38	
2,890.0	0.90	236.50	2,888.8	49.8	-29.8	-50.0	0.32	0.21	17.89	
2,985.0	0.90	237.60	2,983.8	49.0	-31.1	-49.2	0.02	0.00	1.16	
3,079.0	1.60	191.90	3,077.8	47.3	-32.0	-47.6	1.24	0.74	-48.62	
3,176.0	1.80	185.70	3,174.7	44.4	-32.4	-44.7	0.28	0.21	-6.39	
3,270.0	1.70	178.20	3,268.7	41.6	-32.5	-41.9	0.27	-0.11	-7.98	
3,365.0	1.70	189.40	3,363.6	38.8	-32.7	-39.1	0.35	0.00	11.79	
3,460.0	1.80	188.90	3,458.6	35.9	-33.1	-36.2	0.11	0.11	-0.53	
3,555.0	1.70	180.60	3,553.5	33.0	-33.4	-33.3	0.29	-0.11	-8.74	
3,650.0	1.50	175.00	3,648.5	30.4	-33.3	-30.7	0.27	-0.21	-5.89	
3,746.0	1.70	175.90	3,744.5	27.7	-33.1	-28.0	0.21	0.21	0.94	
3,841.0	1.60	172.50	3,839.4	25.0	-32.8	-25.3	0.15	-0.11	-3.58	
3,935.0	1.80	171.80	3,933.4	22.2	-32.4	-22.5	0.21	0.21	-0.74	
4,030.0	1.30	164.50	4,028.4	19.7	-31.9	-20.0	0.56	-0.53	-7.68	
4,125.0	1.60	170.60	4,123.3	17.4	-31.4	-17.6	0.35	0.32	6.42	
4,220.0	1.40	160.40	4,218.3	15.0	-30.8	-15.2	0.35	-0.21	-10.74	
4,315.0	1.40	144.80	4,313.3	12.9	-29.8	-13.2	0.40	0.00	-16.42	
4,410.0	1.60	146.40	4,408.2	10.9	-28.4	-11.1	0.22	0.21	1.68	
4,505.0	1.80	144.40	4,503.2	8.5	-26.8	-8.8	0.22	0.21	-2.11	
4,600.0	1.10	93.30	4,598.2	7.3	-25.0	-7.5	1.47	-0.74	-53.79	
4,695.0	1.50	97.80	4,693.1	7.1	-22.8	-7.3	0.43	0.42	4.74	
4,790.0	1.40	110.10	4,788.1	6.5	-20.5	-6.7	0.34	-0.11	12.95	
4,885.0	1.50	104.90	4,883.1	5.8	-18.2	-5.9	0.17	0.11	-5.47	
4,980.0	1.20	103.80	4,978.1	5.2	-16.1	-5.4	0.32	-0.32	-1.16	
5,075.0	1.20	114.40	5,073.0	4.6	-14.2	-4.7	0.23	0.00	11.16	
5,170.0	1.30	111.50	5,168.0	3.8	-12.3	-3.9	0.12	0.11	-3.05	
5,264.0	0.50	92.00	5,262.0	3.4	-10.9	-3.5	0.90	-0.85	-20.74	
5,358.0	0.30	69.70	5,356.0	3.4	-10.2	-3.5	0.27	-0.21	-23.72	
5,454.0	0.40	103.60	5,452.0	3.4	-9.7	-3.5	0.23	0.10	35.31	
5,549.0	0.70	109.80	5,547.0	3.2	-8.8	-3.2	0.32	0.32	6.53	
5,612.0	0.70	108.90	5,610.0	2.9	-8.1	-3.0	0.02	0.00	-1.43	
5,643.0	0.80	107.70	5,641.0	2.8	-7.7	-2.8	0.33	0.32	-3.87	
5,675.0	3.10	148.50	5,673.0	2.0	-7.0	-2.0	7.96	7.19	127.50	
5,707.0	6.50	158.00	5,704.8	-0.4	-5.9	0.4	10.88	10.63	29.69	
5,738.0	9.70	163.20	5,735.5	-4.6	-4.5	4.5	10.58	10.32	16.77	
5,770.0	12.70	168.70	5,766.9	-10.6	-3.0	10.6	9.94	9.38	17.19	
5,802.0	14.90	174.00	5,798.0	-18.1	-1.9	18.1	7.92	6.88	16.56	
5,834.0	17.20	178.70	5,828.7	-27.0	-1.4	27.0	8.25	7.19	14.69	

<b>Company:</b>	Whiting Oil & Gas	<b>Local Co-ordinate Reference:</b>	Well Wildhorse #18-1844H
<b>Project:</b>	SEC.18-T9N-R59W	<b>TVD Reference:</b>	WELL @ 5041.1ft (RKB Ensign 14 - 15')
<b>Site:</b>	Wildhorse #18-1844H Pad Sec.18-T9N-R59W	<b>MD Reference:</b>	WELL @ 5041.1ft (RKB Ensign 14 - 15')
<b>Well:</b>	Wildhorse #18-1844H	<b>North Reference:</b>	True
<b>Wellbore:</b>	Wellbore #1	<b>Survey Calculation Method:</b>	Minimum Curvature
<b>Design:</b>	Wellbore #1	<b>Database:</b>	Landmark

Survey										
Measured Depth (ft)	Inclination (°)	Azimuth (°)	Vertical Depth (ft)	+N/-S (ft)	+E/-W (ft)	Vertical Section (ft)	Dogleg Rate (°/100ft)	Build Rate (°/100ft)	Turn Rate (°/100ft)	
5,865.0	20.00	178.50	5,858.1	-36.9	-1.1	36.8	9.03	9.03	-0.65	
5,897.0	23.00	179.00	5,887.9	-48.6	-0.9	48.6	9.39	9.38	1.56	
5,929.0	25.90	179.80	5,917.0	-61.8	-0.7	61.8	9.12	9.06	2.50	
5,960.0	28.80	180.30	5,944.6	-76.1	-0.7	76.0	9.38	9.35	1.61	
5,992.0	31.50	179.40	5,972.2	-92.1	-0.7	92.1	8.55	8.44	-2.81	
6,023.0	34.60	178.50	5,998.2	-109.0	-0.4	109.0	10.12	10.00	-2.90	
6,055.0	37.40	177.80	6,024.1	-127.8	0.2	127.8	8.84	8.75	-2.19	
6,087.0	40.10	177.30	6,049.0	-147.8	1.1	147.8	8.49	8.44	-1.56	
6,118.0	42.10	178.00	6,072.4	-168.2	1.9	168.2	6.62	6.45	2.26	
6,150.0	44.70	179.60	6,095.7	-190.2	2.4	190.2	8.82	8.13	5.00	
6,181.0	47.50	181.00	6,117.1	-212.5	2.3	212.5	9.60	9.03	4.52	
6,213.0	50.60	180.60	6,138.1	-236.7	1.9	236.7	9.73	9.69	-1.25	
6,245.0	52.40	179.60	6,158.0	-261.7	1.9	261.7	6.13	5.63	-3.13	
6,276.0	54.20	178.30	6,176.6	-286.6	2.3	286.6	6.71	5.81	-4.19	
6,308.0	56.30	177.30	6,194.8	-312.8	3.4	312.9	7.05	6.56	-3.13	
6,340.0	58.70	175.70	6,212.0	-339.8	5.0	339.8	8.60	7.50	-5.00	
6,371.0	60.90	175.20	6,227.6	-366.5	7.1	366.5	7.23	7.10	-1.61	
6,403.0	64.20	174.70	6,242.3	-394.8	9.6	394.8	10.41	10.31	-1.56	
6,435.0	67.90	175.00	6,255.3	-423.9	12.3	424.0	11.59	11.56	0.94	
6,466.0	71.70	175.50	6,266.0	-452.9	14.7	453.0	12.35	12.26	1.61	
6,498.0	75.50	176.40	6,275.1	-483.5	16.8	483.6	12.18	11.88	2.81	
6,529.0	79.80	177.10	6,281.7	-513.7	18.5	513.9	14.05	13.87	2.26	
6,561.0	83.80	177.80	6,286.3	-545.3	19.9	545.5	12.69	12.50	2.19	
6,585.0	86.80	178.70	6,288.2	-569.2	20.7	569.4	13.05	12.50	3.75	
6,630.0	91.70	179.00	6,288.8	-614.2	21.6	614.4	10.91	10.89	0.67	
6,660.0	92.90	181.10	6,287.6	-644.2	21.6	644.4	8.06	4.00	7.00	
6,690.0	93.10	180.90	6,286.0	-674.2	21.0	674.3	0.94	0.67	-0.67	
6,721.0	92.70	180.30	6,284.5	-705.1	20.7	705.3	2.32	-1.29	-1.94	
6,752.0	90.70	180.00	6,283.5	-736.1	20.6	736.2	6.52	-6.45	-0.97	
6,782.0	90.60	180.20	6,283.2	-766.1	20.6	766.2	0.75	-0.33	0.67	
6,813.0	90.80	179.60	6,282.8	-797.1	20.6	797.2	2.04	0.65	-1.94	
6,843.0	90.90	179.50	6,282.4	-827.1	20.9	827.2	0.47	0.33	-0.33	
6,874.0	91.20	179.30	6,281.8	-858.1	21.2	858.2	1.16	0.97	-0.65	
6,905.0	91.50	178.80	6,281.1	-889.1	21.7	889.2	1.88	0.97	-1.61	
6,936.0	91.50	178.60	6,280.3	-920.0	22.4	920.2	0.64	0.00	-0.65	
6,967.0	91.70	178.20	6,279.4	-951.0	23.3	951.2	1.44	0.65	-1.29	
6,997.0	92.20	177.90	6,278.4	-981.0	24.3	981.2	1.94	1.67	-1.00	
7,028.0	91.00	178.80	6,277.5	-1,012.0	25.2	1,012.1	4.84	-3.87	2.90	
7,059.0	90.70	178.90	6,277.1	-1,043.0	25.8	1,043.1	1.02	-0.97	0.32	
7,090.0	90.70	177.90	6,276.7	-1,073.9	26.7	1,074.1	3.23	0.00	-3.23	
7,121.0	88.70	178.40	6,276.8	-1,104.9	27.7	1,105.1	6.65	-6.45	1.61	
7,152.0	87.90	178.10	6,277.8	-1,135.9	28.6	1,136.1	2.76	-2.58	-0.97	
7,182.0	87.30	177.40	6,279.0	-1,165.8	29.8	1,166.1	3.07	-2.00	-2.33	
7,213.0	87.70	178.60	6,280.4	-1,196.8	30.9	1,197.0	4.08	1.29	3.87	
7,244.0	88.90	179.10	6,281.3	-1,227.8	31.5	1,228.0	4.19	3.87	1.61	
7,275.0	90.50	179.60	6,281.5	-1,258.8	31.9	1,259.0	5.41	5.16	1.61	
7,306.0	91.00	179.30	6,281.0	-1,289.8	32.1	1,290.0	1.88	1.61	-0.97	
7,336.0	91.40	179.10	6,280.4	-1,319.8	32.6	1,320.0	1.49	1.33	-0.67	
7,367.0	90.50	179.50	6,279.9	-1,350.7	32.9	1,351.0	3.18	-2.90	1.29	
7,398.0	90.60	179.50	6,279.6	-1,381.7	33.2	1,382.0	0.32	0.32	0.00	
7,429.0	91.00	179.30	6,279.2	-1,412.7	33.5	1,413.0	1.44	1.29	-0.65	
7,460.0	91.50	179.10	6,278.5	-1,443.7	34.0	1,444.0	1.74	1.61	-0.65	
7,491.0	90.80	179.10	6,277.9	-1,474.7	34.5	1,475.0	2.26	-2.26	0.00	
7,522.0	88.60	179.50	6,278.0	-1,505.7	34.8	1,506.0	7.21	-7.10	1.29	

**Company:** Whiting Oil & Gas  
**Project:** SEC.18-T9N-R59W  
**Site:** Wildhorse #18-1844H Pad Sec.18-T9N-R59W  
**Well:** Wildhorse #18-1844H  
**Wellbore:** Wellbore #1  
**Design:** Wellbore #1

**Local Co-ordinate Reference:** Well Wildhorse #18-1844H  
**TVD Reference:** WELL @ 5041.1ft (RKB Ensign 14 - 15')  
**MD Reference:** WELL @ 5041.1ft (RKB Ensign 14 - 15')  
**North Reference:** True  
**Survey Calculation Method:** Minimum Curvature  
**Database:** Landmark

## Survey

Measured Depth (ft)	Inclination (°)	Azimuth (°)	Vertical Depth (ft)	+N/-S (ft)	+E/-W (ft)	Vertical Section (ft)	Dogleg Rate (°/100ft)	Build Rate (°/100ft)	Turn Rate (°/100ft)
7,553.0	88.50	179.30	6,278.8	-1,536.7	35.2	1,537.0	0.72	-0.32	-0.65
7,583.0	88.70	179.10	6,279.6	-1,566.7	35.6	1,566.9	0.94	0.67	-0.67
7,614.0	90.20	179.80	6,279.9	-1,597.7	35.9	1,597.9	5.34	4.84	2.26
7,645.0	90.90	179.10	6,279.6	-1,628.7	36.2	1,628.9	3.19	2.26	-2.26
7,676.0	91.00	179.10	6,279.0	-1,659.7	36.7	1,659.9	0.32	0.32	0.00
7,707.0	90.60	179.50	6,278.6	-1,690.7	37.0	1,690.9	1.82	-1.29	1.29
7,738.0	90.40	178.90	6,278.3	-1,721.7	37.5	1,721.9	2.04	-0.65	-1.94
7,769.0	90.30	178.80	6,278.1	-1,752.7	38.1	1,752.9	0.46	-0.32	-0.32
7,799.0	90.40	177.90	6,278.0	-1,782.6	39.0	1,782.9	3.02	0.33	-3.00
7,829.0	89.30	178.40	6,278.0	-1,812.6	39.9	1,812.9	4.03	-3.67	1.67
7,860.0	89.60	178.90	6,278.3	-1,843.6	40.7	1,843.9	1.88	0.97	1.61
7,891.0	89.90	180.20	6,278.5	-1,874.6	40.9	1,874.9	4.30	0.97	4.19
7,922.0	89.20	179.60	6,278.7	-1,905.6	41.0	1,905.9	2.97	-2.26	-1.94
7,952.0	88.80	179.60	6,279.2	-1,935.6	41.2	1,935.9	1.33	-1.33	0.00
7,983.0	89.40	181.10	6,279.7	-1,966.6	41.0	1,966.9	5.21	1.94	4.84
8,014.0	89.30	180.50	6,280.1	-1,997.6	40.5	1,997.9	1.96	-0.32	-1.94
8,044.0	89.50	180.00	6,280.4	-2,027.6	40.4	2,027.9	1.79	0.67	-1.67
8,075.0	89.60	180.30	6,280.6	-2,058.6	40.3	2,058.9	1.02	0.32	0.97
8,106.0	89.40	180.70	6,280.9	-2,089.6	40.1	2,089.9	1.44	-0.65	1.29
8,137.0	89.80	181.40	6,281.1	-2,120.6	39.5	2,120.9	2.60	1.29	2.26
8,168.0	90.10	181.60	6,281.2	-2,151.6	38.7	2,151.8	1.16	0.97	0.65
8,199.0	90.50	181.40	6,281.0	-2,182.6	37.9	2,182.8	1.44	1.29	-0.65
8,230.0	90.00	180.50	6,280.9	-2,213.6	37.4	2,213.8	3.32	-1.61	-2.90
8,261.0	89.70	179.60	6,280.9	-2,244.6	37.3	2,244.8	3.06	-0.97	-2.90
8,292.0	89.50	180.50	6,281.2	-2,275.6	37.3	2,275.8	2.97	-0.65	2.90
8,323.0	89.60	181.10	6,281.4	-2,306.6	36.9	2,306.8	1.96	0.32	1.94
8,354.0	89.80	180.70	6,281.6	-2,337.6	36.4	2,337.8	1.44	0.65	-1.29
8,385.0	90.20	180.20	6,281.6	-2,368.6	36.1	2,368.8	2.07	1.29	-1.61
8,416.0	91.10	180.90	6,281.2	-2,399.5	35.8	2,399.8	3.68	2.90	2.26
8,446.0	92.10	181.20	6,280.4	-2,429.5	35.3	2,429.7	3.48	3.33	1.00
8,477.0	92.20	180.90	6,279.2	-2,460.5	34.7	2,460.7	1.02	0.32	-0.97
8,508.0	91.20	180.00	6,278.3	-2,491.5	34.5	2,491.7	4.34	-3.23	-2.90
8,539.0	91.00	179.50	6,277.7	-2,522.5	34.6	2,522.7	1.74	-0.65	-1.61
8,569.0	91.30	179.60	6,277.1	-2,552.5	34.9	2,552.7	1.05	1.00	0.33
8,600.0	91.70	179.30	6,276.3	-2,583.5	35.2	2,583.7	1.61	1.29	-0.97
8,631.0	90.90	179.80	6,275.6	-2,614.5	35.4	2,614.7	3.04	-2.58	1.61
8,662.0	90.50	179.80	6,275.2	-2,645.4	35.5	2,645.7	1.29	-1.29	0.00
8,693.0	90.70	179.50	6,274.9	-2,676.4	35.7	2,676.7	1.16	0.65	-0.97
8,724.0	90.10	180.50	6,274.7	-2,707.4	35.7	2,707.7	3.76	-1.94	3.23
8,755.0	89.00	179.10	6,274.9	-2,738.4	35.8	2,738.7	5.74	-3.55	-4.52
8,786.0	87.70	178.90	6,275.8	-2,769.4	36.3	2,769.6	4.24	-4.19	-0.65
8,817.0	87.70	179.30	6,277.0	-2,800.4	36.8	2,800.6	1.29	0.00	1.29
8,847.0	87.60	178.80	6,278.3	-2,830.4	37.3	2,830.6	1.70	-0.33	-1.67
8,878.0	87.80	179.30	6,279.5	-2,861.3	37.8	2,861.6	1.74	0.65	1.61
8,908.0	88.50	179.80	6,280.5	-2,891.3	38.1	2,891.5	2.87	2.33	1.67
8,939.0	88.90	179.60	6,281.2	-2,922.3	38.2	2,922.5	1.44	1.29	-0.65
8,970.0	89.90	180.20	6,281.5	-2,953.3	38.3	2,953.5	3.76	3.23	1.94
9,001.0	90.50	180.90	6,281.4	-2,984.3	38.0	2,984.5	2.97	1.94	2.26
9,032.0	90.00	181.20	6,281.3	-3,015.3	37.4	3,015.5	1.88	-1.61	0.97
9,063.0	90.20	180.90	6,281.2	-3,046.3	36.9	3,046.5	1.16	0.65	-0.97
9,094.0	90.50	180.50	6,281.0	-3,077.3	36.5	3,077.5	1.61	0.97	-1.29
9,125.0	91.00	180.70	6,280.6	-3,108.3	36.2	3,108.5	1.74	1.61	0.65
9,156.0	91.20	180.00	6,280.0	-3,139.3	36.0	3,139.5	2.35	0.65	-2.26
9,187.0	90.70	180.90	6,279.5	-3,170.3	35.7	3,170.5	3.32	-1.61	2.90

[illegible]

Design Targets
----------------

Checked By: \_\_\_\_\_ Approved By: \_\_\_\_\_ Date: \_\_\_\_\_