

Company: Diamond Oil & Gas
Well Name: 05-123-3800-00
API: 05-123-3800-00
RigID: Franks Rig 10
State: Colorado Northern Zone
County/Parish: Weld
Operator: Ensign Directional
Country: USA
Survey Company: Ensign Directional
Job number: Ensign #8

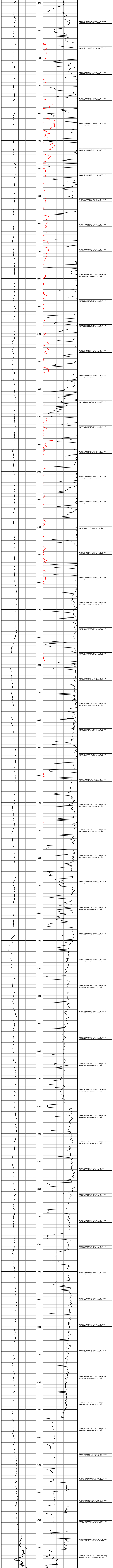
DD 1 Data Station
DD 2 Data Station
MW1 1 Slave Column
MW1 2 Main Column

Log measurements:
Depth measured from:
Mud Type:
Mud Density:
Elevations

Casing Depth: 9.58
Surf: 837
Intermediate: 735

Run In Size	Offset	Gamma Survey	Start	Depth	End	Start	End
1	6.30	50.40	7.20	7.25	8814	81014	
2							
3							
4							
5							
6							
7							
8							
9							
10							

Ensign Directional uses its best efforts to provide its customers with accurate information and interpretations of such information in conjunction with services performed but will not be held liable or responsible for the accuracy of such information or interpretation.



001	MD1000.00	1423.01	AW100.0	TY001.00	USL-11.88 NSL-6.72 EW14.89 TEMP0.0
002	MD1000.00	1421.51	AW100.0	TY001.00	USL-12.79 NSL-6.42 EW14.89 TEMP0.0
003	MD1000.00	1420.01	AW100.0	TY001.00	USL-13.70 NSL-6.12 EW14.89 TEMP0.0
004	MD1000.00	1418.51	AW100.0	TY001.00	USL-14.61 NSL-5.82 EW14.89 TEMP0.0
005	MD1000.00	1417.01	AW100.0	TY001.00	USL-15.52 NSL-5.52 EW14.89 TEMP0.0
006	MD1000.00	1415.51	AW100.0	TY001.00	USL-16.43 NSL-5.22 EW14.89 TEMP0.0
007	MD1000.00	1414.01	AW100.0	TY001.00	USL-17.34 NSL-4.92 EW14.89 TEMP0.0
008	MD1000.00	1412.51	AW100.0	TY001.00	USL-18.25 NSL-4.62 EW14.89 TEMP0.0
009	MD1000.00	1411.01	AW100.0	TY001.00	USL-19.16 NSL-4.32 EW14.89 TEMP0.0
010	MD1000.00	1409.51	AW100.0	TY001.00	USL-20.07 NSL-4.02 EW14.89 TEMP0.0
011	MD1000.00	1408.01	AW100.0	TY001.00	USL-20.98 NSL-3.72 EW14.89 TEMP0.0
012	MD1000.00	1406.51	AW100.0	TY001.00	USL-21.89 NSL-3.42 EW14.89 TEMP0.0
013	MD1000.00	1405.01	AW100.0	TY001.00	USL-22.80 NSL-3.12 EW14.89 TEMP0.0
014	MD1000.00	1403.51	AW100.0	TY001.00	USL-23.71 NSL-2.82 EW14.89 TEMP0.0
015	MD1000.00	1402.01	AW100.0	TY001.00	USL-24.62 NSL-2.52 EW14.89 TEMP0.0
016	MD1000.00	1400.51	AW100.0	TY001.00	USL-25.53 NSL-2.22 EW14.89 TEMP0.0
017	MD1000.00	1399.01	AW100.0	TY001.00	USL-26.44 NSL-1.92 EW14.89 TEMP0.0
018	MD1000.00	1397.51	AW100.0	TY001.00	USL-27.35 NSL-1.62 EW14.89 TEMP0.0
019	MD1000.00	1396.01	AW100.0	TY001.00	USL-28.26 NSL-1.32 EW14.89 TEMP0.0
020	MD1000.00	1394.51	AW100.0	TY001.00	USL-29.17 NSL-1.02 EW14.89 TEMP0.0
021	MD1000.00	1393.01	AW100.0	TY001.00	USL-30.08 NSL-0.72 EW14.89 TEMP0.0
022	MD1000.00	1391.51	AW100.0	TY001.00	USL-30.99 NSL-0.42 EW14.89 TEMP0.0
023	MD1000.00	1390.01	AW100.0	TY001.00	USL-31.90 NSL-0.12 EW14.89 TEMP0.0
024	MD1000.00	1388.51	AW100.0	TY001.00	USL-32.81 NSL-0.18 EW14.89 TEMP0.0
025	MD1000.00	1387.01	AW100.0	TY001.00	USL-33.72 NSL-0.48 EW14.89 TEMP0.0
026	MD1000.00	1385.51	AW100.0	TY001.00	USL-34.63 NSL-0.78 EW14.89 TEMP0.0
027	MD1000.00	1384.01	AW100.0	TY001.00	USL-35.54 NSL-1.08 EW14.89 TEMP0.0
028	MD1000.00	1382.51	AW100.0	TY001.00	USL-36.45 NSL-1.38 EW14.89 TEMP0.0
029	MD1000.00	1381.01	AW100.0	TY001.00	USL-37.36 NSL-1.68 EW14.89 TEMP0.0
030	MD1000.00	1379.51	AW100.0	TY001.00	USL-38.27 NSL-1.98 EW14.89 TEMP0.0
031	MD1000.00	1378.01	AW100.0	TY001.00	USL-39.18 NSL-2.28 EW14.89 TEMP0.0
032	MD1000.00	1376.51	AW100.0	TY001.00	USL-40.09 NSL-2.58 EW14.89 TEMP0.0
033	MD1000.00	1375.01	AW100.0	TY001.00	USL-41.00 NSL-2.88 EW14.89 TEMP0.0
034	MD1000.00	1373.51	AW100.0	TY001.00	USL-41.91 NSL-3.18 EW14.89 TEMP0.0
035	MD1000.00	1372.01	AW100.0	TY001.00	USL-42.82 NSL-3.48 EW14.89 TEMP0.0
036	MD1000.00	1370.51	AW100.0	TY001.00	USL-43.73 NSL-3.78 EW14.89 TEMP0.0
037	MD1000.00	1369.01	AW100.0	TY001.00	USL-44.64 NSL-4.08 EW14.89 TEMP0.0
038	MD1000.00	1367.51	AW100.0	TY001.00	USL-45.55 NSL-4.38 EW14.89 TEMP0.0
039	MD1000.00	1366.01	AW100.0	TY001.00	USL-46.46 NSL-4.68 EW14.89 TEMP0.0
040	MD1000.00	1364.51	AW100.0	TY001.00	USL-47.37 NSL-4.98 EW14.89 TEMP0.0
041	MD1000.00	1363.01	AW100.0	TY001.00	USL-48.28 NSL-5.28 EW14.89 TEMP0.0
042	MD1000.00	1361.51	AW100.0	TY001.00	USL-49.19 NSL-5.58 EW14.89 TEMP0.0
043	MD1000.00	1360.01	AW100.0	TY001.00	USL-50.10 NSL-5.88 EW14.89 TEMP0.0
044	MD1000.00	1358.51	AW100.0	TY001.00	USL-51.01 NSL-6.18 EW14.89 TEMP0.0
045	MD1000.00	1357.01	AW100.0	TY001.00	USL-51.92 NSL-6.48 EW14.89 TEMP0.0
046	MD1000.00	1355.51	AW100.0	TY001.00	USL-52.83 NSL-6.78 EW14.89 TEMP0.0
047	MD1000.00	1354.01	AW100.0	TY001.00	USL-53.74 NSL-7.08 EW14.89 TEMP0.0
048	MD1000.00	1352.51	AW100.0	TY001.00	USL-54.65 NSL-7.38 EW14.89 TEMP0.0
049	MD1000.00	1351.01	AW100.0	TY001.00	USL-55.56 NSL-7.68 EW14.89 TEMP0.0
050	MD1000.00	1349.51	AW100.0	TY001.00	USL-56.47 NSL-7.98 EW14.89 TEMP0.0
051	MD1000.00	1348.01	AW100.0	TY001.00	USL-57.38 NSL-8.28 EW14.89 TEMP0.0
052	MD1000.00	1346.51	AW100.0	TY001.00	USL-58.29 NSL-8.58 EW14.89 TEMP0.0
053	MD1000.00	1345.01	AW100.0	TY001.00	USL-59.20 NSL-8.88 EW14.89 TEMP0.0
054	MD1000.00	1343.51	AW100.0	TY001.00	USL-60.11 NSL-9.18 EW14.89 TEMP0.0
055	MD1000.00	1342.01	AW100.0	TY001.00	USL-61.02 NSL-9.48 EW14.89 TEMP0.0
056	MD1000.00	1340.51	AW100.0	TY001.00	USL-61.93 NSL-9.78 EW14.89 TEMP0.0
057	MD1000.00	1339.01	AW100.0	TY001.00	USL-62.84 NSL-10.08 EW14.89 TEMP0.0
058	MD1000.00	1337.51	AW100.0	TY001.00	USL-63.75 NSL-10.38 EW14.89 TEMP0.0
059	MD1000.00	1336.01	AW100.0	TY001.00	USL-64.66 NSL-10.68 EW14.89 TEMP0.0
060	MD1000.00	1334.51	AW100.0	TY001.00	USL-65.57 NSL-10.98 EW14.89 TEMP0.0
061	MD1000.00	1333.01	AW100.0	TY001.00	USL-66.48 NSL-11.28 EW14.89 TEMP0.0
062	MD1000.00	1331.51	AW100.0	TY001.00	USL-67.39 NSL-11.58 EW14.89 TEMP0.0
063	MD1000.00	1330.01	AW100.0	TY001.00	USL-68.30 NSL-11.88 EW14.89 TEMP0.0
064	MD1000.00	1328.51	AW100.0	TY001.00	USL-69.21 NSL-12.18 EW14.89 TEMP0.0
065	MD1000.00	1327.01	AW100.0	TY001.00	USL-70.12 NSL-12.48 EW14.89 TEMP0.0
066	MD1000.00	1325.51	AW100.0	TY001.00	USL-71.03 NSL-12.78 EW14.89 TEMP0.0
067	MD1000.00	1324.01	AW100.0	TY001.00	USL-71.94 NSL-13.08 EW14.89 TEMP0.0
068	MD1000.00	1322.51	AW100.0	TY001.00	USL-72.85 NSL-13.38 EW14.89 TEMP0.0
069	MD1000.00	1321.01	AW100.0	TY001.00	USL-73.76 NSL-13.68 EW14.89 TEMP0.0
070	MD1000.00	1319.51	AW100.0	TY001.00	USL-74.67 NSL-13.98 EW14.89 TEMP0.0
071	MD1000.00	1318.01	AW100.0	TY001.00	USL-75.58 NSL-14.28 EW14.89 TEMP0.0
072	MD1000.00	1316.51	AW100.0	TY001.00	USL-76.49 NSL-14.58 EW14.89 TEMP0.0
073	MD1000.00	1315.01	AW100.0	TY001.00	USL-77.40 NSL-14.88 EW14.89 TEMP0.0
074	MD1000.00	1313.51	AW100.0	TY001.00	USL-78.31 NSL-15.18 EW14.89 TEMP0.0
075	MD1000.00	1312.01	AW100.0	TY001.00	USL-79.22 NSL-15.48 EW14.89 TEMP0.0
076	MD1000.00	1310.51	AW100.0	TY001.00	USL-80.13 NSL-15.78 EW14.89 TEMP0.0
077	MD1000.00	1309.01	AW100.0	TY001.00	USL-81.04 NSL-16.08 EW14.89 TEMP0.0
078	MD1000.00	1307.51	AW100.0	TY001.00	USL-81.95 NSL-16.38 EW14.89 TEMP0.0
079	MD1000.00	1306.01	AW100.0	TY001.00	USL-82.86 NSL-16.68 EW14.89 TEMP0.0
080	MD1000.00	1304.51	AW100.0	TY001.00	USL-83.77 NSL-16.98 EW14.89 TEMP0.0
081	MD1000.00	1303.01	AW100.0	TY001.00	USL-84.68 NSL-17.28 EW14.89 TEMP0.0
082	MD1000.00	1301.51	AW100.0	TY001.00	USL-85.59 NSL-17.58 EW14.89 TEMP0.0
083	MD1000.00	1300.01	AW100.0	TY001.00	USL-86.50 NSL-17.88 EW14.89 TEMP0.0
084	MD1000.00	1298.51	AW100.0	TY001.00	USL-87.41 NSL-18.18 EW14.89 TEMP0.0
085	MD1000.00	1297.01	AW100.0	TY001.00	USL-88.32 NSL-18.48 EW14.89 TEMP0.0
086	MD1000.00	1295.51	AW100.0	TY001.00	USL-89.23 NSL-18.78 EW14.89 TEMP0.0
087	MD1000.00	1294.01	AW100.0	TY001.00	USL-90.14 NSL-19.08 EW14.89 TEMP0.0
088	MD1000.00	1292.51	AW100.0	TY001.00	USL-91.05 NSL-19.38 EW14.89 TEMP0.0
089	MD1000.00	1291.01	AW100.0	TY001.00	USL-91.96 NSL-19.68 EW14.89 TEMP0.0
090	MD1000.00	1289.51	AW100.0	TY001.00	USL-92.87 NSL-19.98 EW14.89 TEMP0.0
091	MD1000.00	1288.01	AW100.0	TY001.00	USL-93.78 NSL-20.28 EW14.89 TEMP0.0
092	MD1000.00	1286.51	AW100.0	TY001.00	USL-94.69 NSL-20.58 EW14.89 TEMP0.0
093	MD1000.00	1285.01	AW100.0	TY001.00	USL-95.60 NSL-20.88 EW14.89 TEMP0.0
094	MD1000.00	1283.51	AW100.0	TY001.00	USL-96.51 NSL-21.18 EW14.89 TEMP0.0
095	MD1000.00	1282.01	AW100.0	TY001.00	USL-97.42 NSL-21.48 EW14.89 TEMP0.0
096	MD1000.00	1280.51	AW100.0	TY001.00	USL-98.33 NSL-21.78 EW14.89 TEMP0.0
097	MD1000.00	1279.01	AW100.0	TY001.00	USL-99.24 NSL-22.08 EW14.89 TEMP0.0
098	MD1000.00	1277.51	AW100.0	TY001.00	USL-100.15 NSL-22.38 EW14.89 TEMP0.0
099	MD1000.00	1276.01	AW100.0	TY001.00	USL-101.06 NSL-22.68 EW14.89 TEMP0.0
100	MD1000.00	1274.51	AW100.0	TY001.00	USL-101.97 NSL-22.98 EW14.89 TEMP0.0