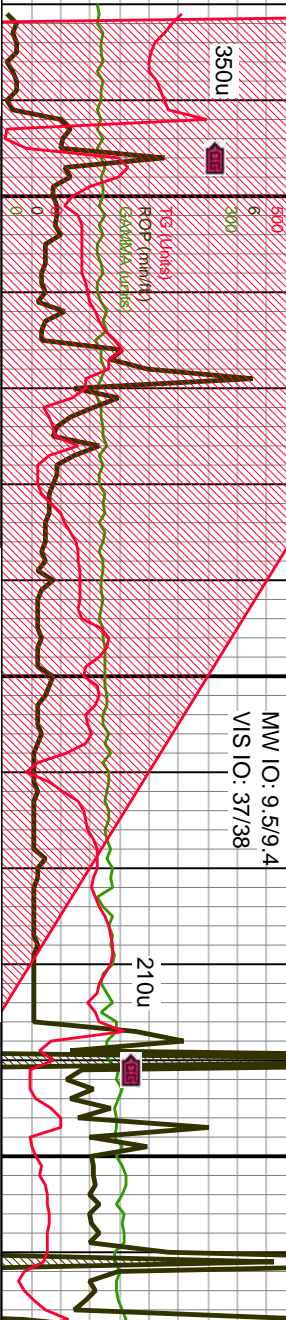






ROP  
TG  
ROF  
GAMMA

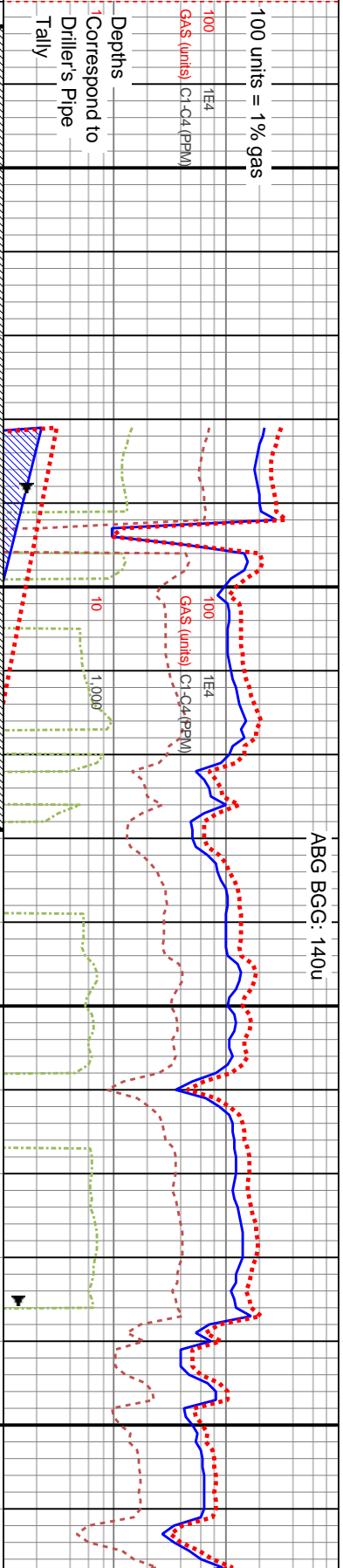
Extraction O&G  
Diamond Valley East 2  
Weld County, Colorado  
Spud Date: 10-15-14  
Surface Casing @ 790'  
2-man Logging / Geosteering Began:  
10-16-14



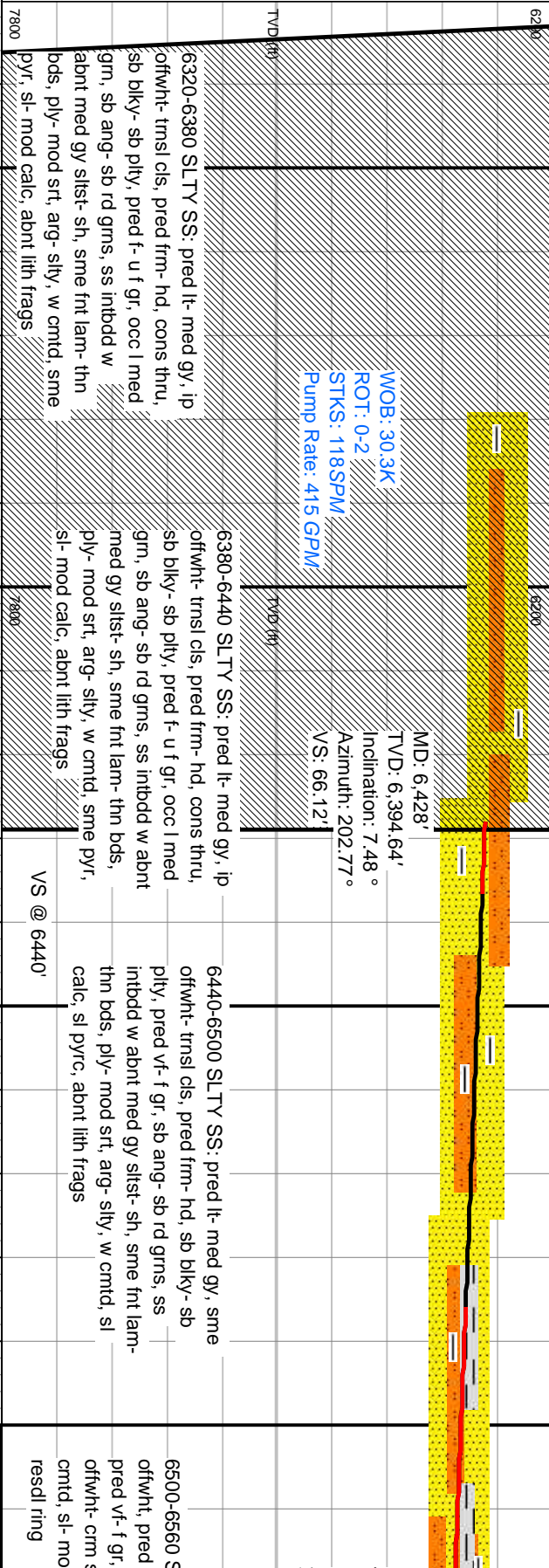
Slide/Rotate  
Depth Labels



Total Gas & Chromatograph  
GAS  
C1  
C2  
C3  
C4



Well Bore  
TVD

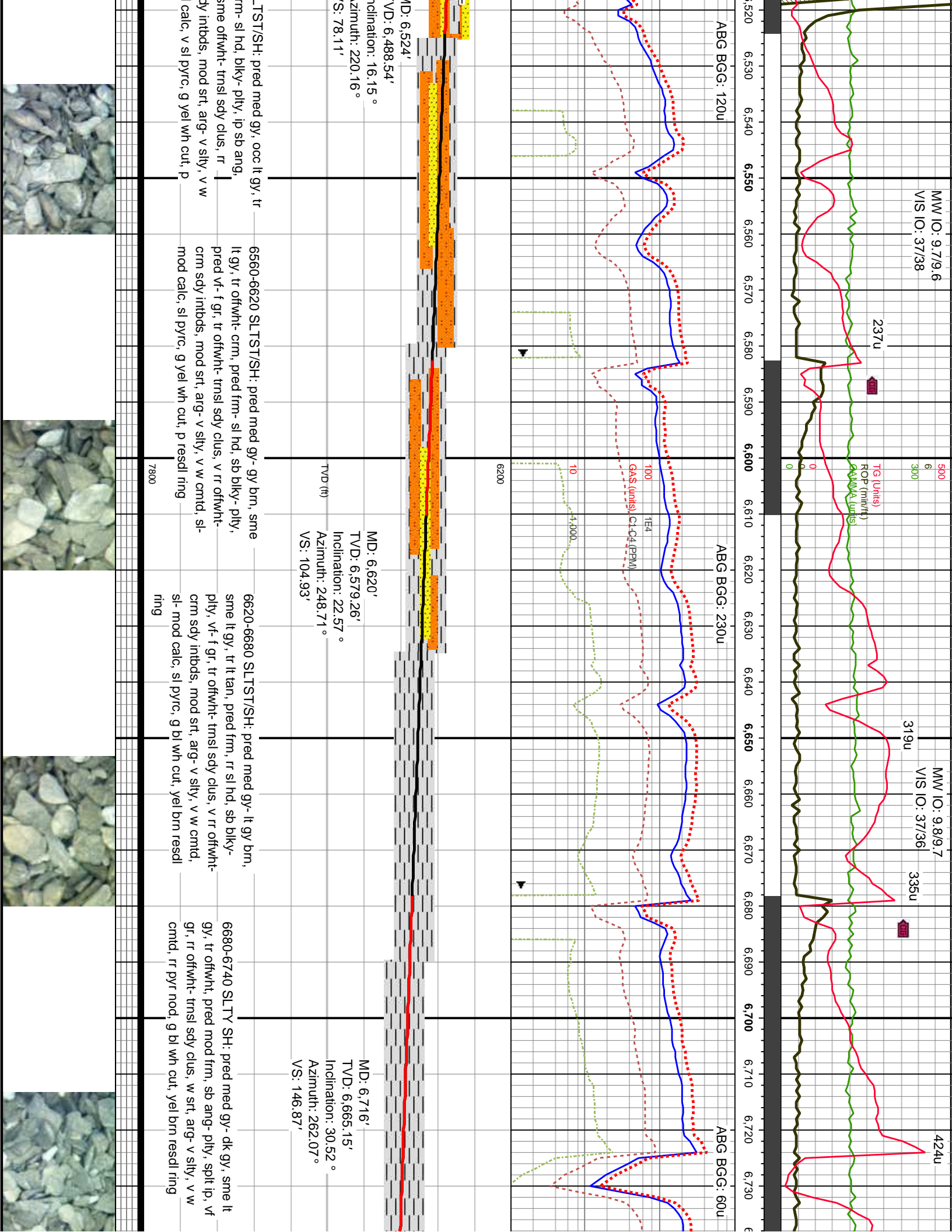


Oil Show

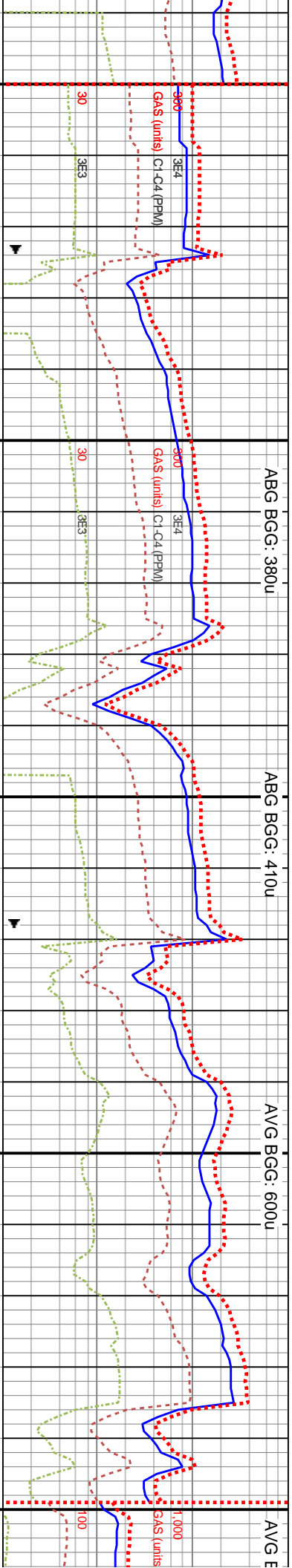


Images









6200  
MD: 6,812'  
TVD: 6,743.52'  
Inclination: 39.85°  
Azimuth: 262.33°  
VS: 201.97'

MD: 6,907'  
TVD: 6,810.31'  
Inclination: 50.67°  
Azimuth: 267.09°  
VS: 269.28'

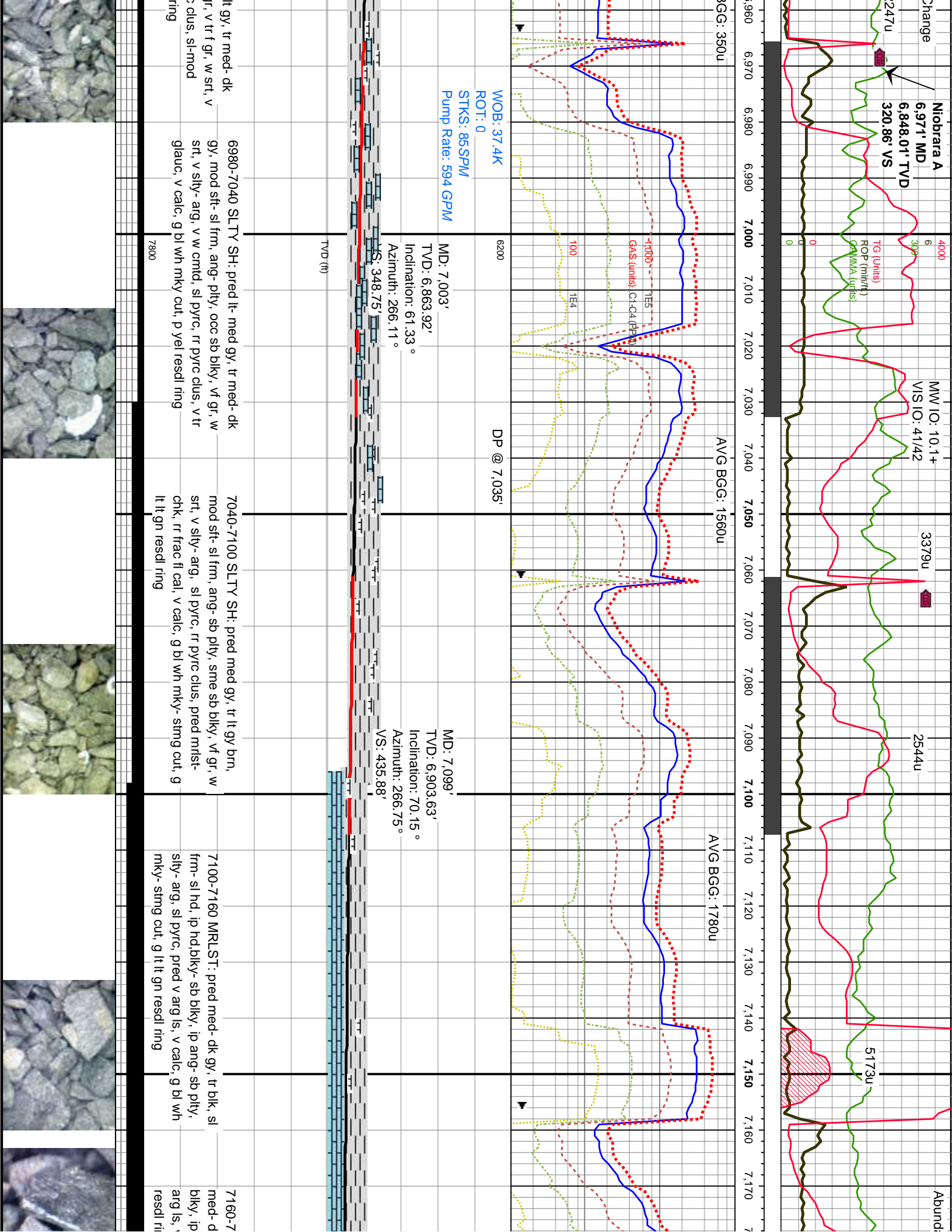
6860-6860 SLTY SH: pried med-dk gy, v tr lt gy,  
pried sl- mod frm, ply- sb ang, split ip, vf- tr f gr,  
w srt, arg- v silty, v w cmtd, sl pyrc, tr pyr nod, g b  
wh mky cut, p yel resd ring

6860-6920 SL TY SH: pred med- dk gy, tr it  
gy, pred sl- v frm, sb blk- sb ang, ply- split  
ip, vf gr, w st, v slty- arg, v w cmtid, sl pyrc, tr  
pyr nod, g bl wh mky cut, p yel resd ring

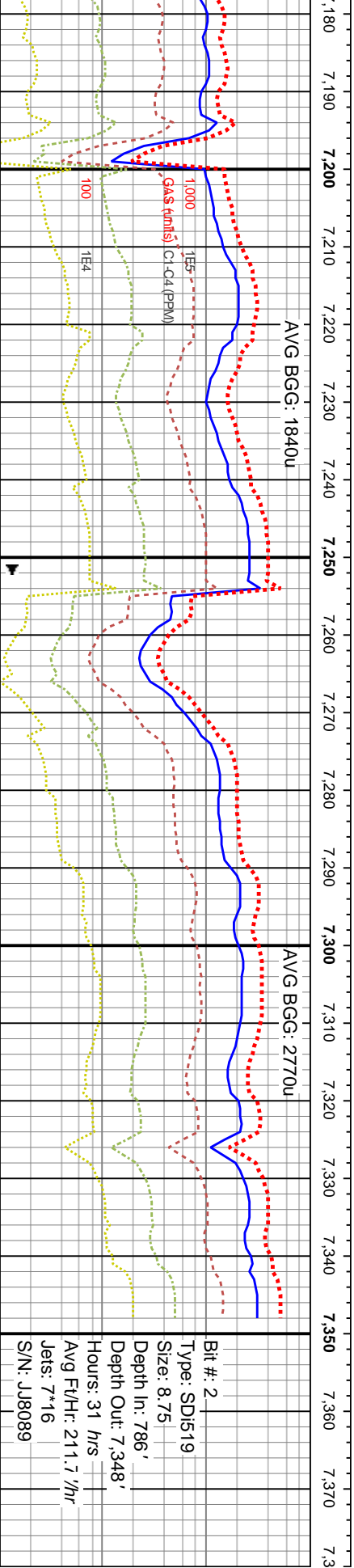
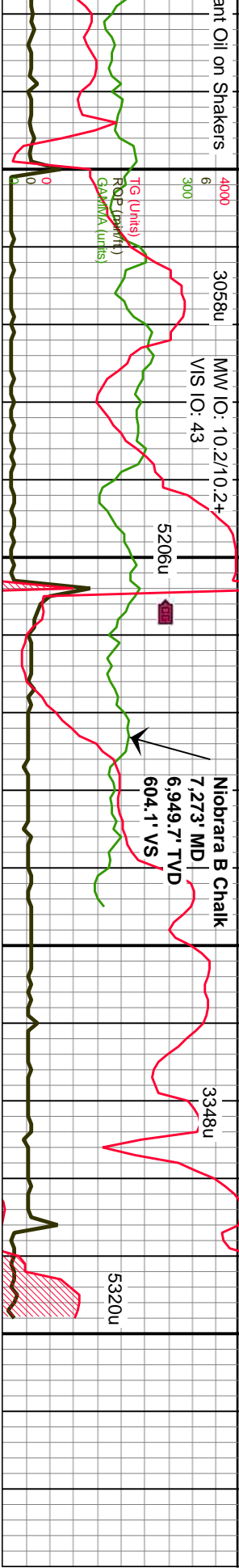
6920-6980 SLTY SH: pred med-  
gy, stf- mod frm, ang-sb plty, vf c  
sily- arg, v w cmtd, sl pyrc, rr pyrc  
calc, g bl wh mky cut, p yel resdl











7220 60% MRLST 40% CHK: pred k gy, tr blk, sl frm- sl hd, ip hd, blk- sb ang- sb pty, slty- arg, sl pyrc, pred v v calc, g bl wh mky- stmg cut, g lt lt gn g, o stn	7220-7280 50% MRLST 50% CHK: pred med- dk gy, ip gy- lt gy, tr blk, sl frm- sl hd, ip hd, blk- sb blk- ip ang- sb pty, slty- arg, sl pyrc, pred v arg ls, v calc, g bl wh mky- stmg cut, g lt lt gn resd ring, o stn	7280-7348 80% CHK 20% MRLST: pred med- dk gy, ip gy- lt gy, sme blk, sl frm- hd hd, blk- sb blk- ip ang- sb pty, slty- arg, tr pyr, pred v arg ls, v calc, carb, g lt gn- gn cut, g lt- lt gn resd ring, o stn	TD reached @ 0830hrs on 10-19-14
7800			

