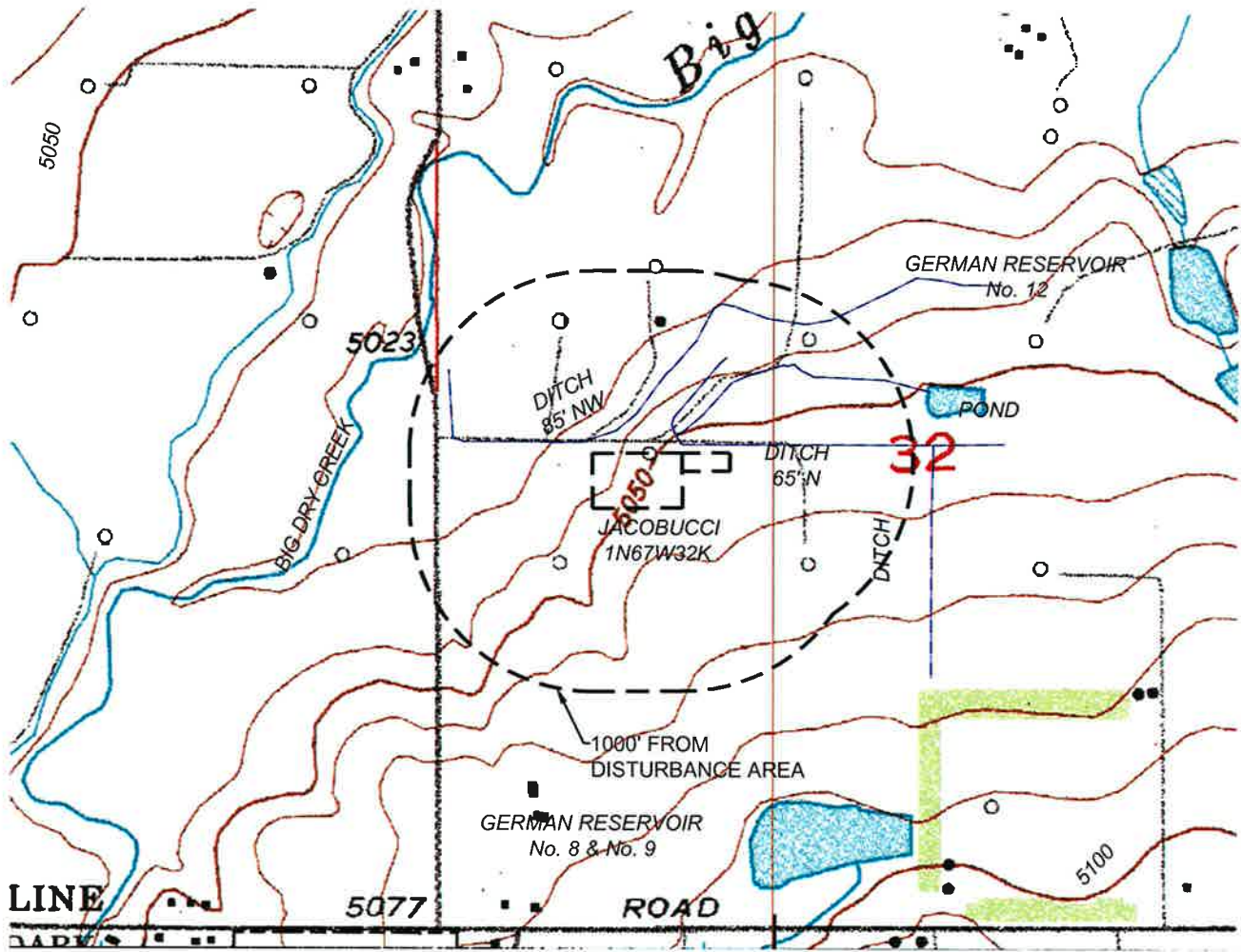


HYDROLOGY / TOPOGRAPHY MAP

SECTION 32, TOWNSHIP 1 NORTH, RANGE 67 WEST, 6TH P.M.



NEAREST DOWNGRAIDENT WATER FEATURE
DITCH 65' N



SCALE: 1"=1000'

NOTES:
1. DISTANCES SHOWN TO NEAREST EDGE OF PAD.



SURVEYING AND MAPPING LLC (SAM)
555 Zang St., Suite 210
Lakewood CO 80228
Ph: (303) 988-5852
Fax: (303) 988-2195
EMAIL: SAM@SAM.BIZ

PAD NAME: JACOBUCCI 1N67W32K		
LOCATION: SECTION 32, T1N, R67W, 6TH P.M. WELD COUNTY, COLORADO		
DRAWN BY: TWK	CHECKED BY: T. CARLSON	SHEET No. 1 OF 1

EXHIBIT DATE 07/10/2014	SCALE: 1"=1000'	PROJ. No. 34481	Dwg. No. JACOBUCCI.dwg
----------------------------	--------------------	--------------------	---------------------------