

Field Ticket Number: 0901643481

Field Ticket Date: Friday, September 05, 2014

Planning Order #: NA

**Bill To:**

NOBLE ENERGY INC E-BUSINESS,  
DONOTMAIL-1001 NOBLE ENERGY WAY,  
HOUSTON, TX, 77070

**Ship To:**

NOBLE ENERGY LOWER LATHEN 2-1G, WE,  
KERSEY, CO, 80644

**Job Name:**

Squeeze

**Order Type:**

ZOH

**Well Name:**

Lower Lathem D02-31B

**Company Code:**

1100

**Customer PO No.:**

Na

**Shipping Point:**

FORT LUPTON Shipping Point

**Sales Office:**

ROCKY MOUNTAINS BD

**Well Type:**

OIL

**Well Category:**

WORKOVER

**Rig Name/##:**

Workover

Material	Description	QTY	UOM	Unit Amount	Gross Amount	Discount	Net Amount
14099	CMT RECEMENT BOM	1	JOB				
	<b>Cement Services &amp; Equipment</b>						
2	MILEAGE FOR CEMENTING CREW	80	MI				
	Number of Units	1					
1	ZI-MILEAGE FROM NEAREST HES BASE /UNIT	80	MI				
	Number of Units	1					
16091	ZI - PUMPING CHARGE	1	EA				
	DEPTH	54					
	FEET/METERS (FT/M)	FT					
130104	PORT. DATA ACQUIS. W/OPTICEM RT WHES	1	EA				
	DAYS OR PARTIAL DAY(WHOLE NO.)	1					
114	R/A DENSOMETER W/CHART RECORDER./JOB,ZI	1	JOB				
	NUMBER OF UNITS	1					
14743	TUBING/ROTARY SUB RNTL,2.38",1ST DAY, ZI	1	EA				
	DAYS OR FRACTION (MIN1)	1					
	HR/DAY/WEEK/MT/H/YEAR/JOB/RUN	DAY					
	<b>Cement Surcharges</b>						
7	ENVIRONMENTAL CHARGE./JOB,ZI	1	JOB				
8	IRON SAFETY INSPECTION SURCHARGE /JOB ZI	1	JOB				
86954	ZI FUEL SURCHG-CARS/PICKUPS<1 1/2TON	80	MI				
	Number of Units	1					
86955	ZI FUEL SURCHG-HEAVY TRKS >1 1/2 TON	80	MI				
	Number of Units	1					
87605	FUEL SURCHG-CMT & CMT ADDITIVES	40	MI				
	NUMBER OF TONS	3.525					
372867	Cmt PSL - DOT Vehicle Charge, CMT	2	EA				
	<b>Cement Materials</b>						
76400	MILEAGE,CMT MTL5 DEL/RET MIN	40	MI				
	NUMBER OF TONS	3.525					
3965	HANDLE&DUMP SVC. CHRG, CMT&ADDITIVES,ZI	50	CF				
	Unit of Measurement	EA					
	NUMBER OF EACH	1					
92	PORTABLE RADIOS, ZI	4	EA				
	NUMBER OF JOBS	1					
	ENTER FEET/METER/JOB/DAY	JOB					
100008028	CHEM, SUGAR, GRANULATED, 50LB BAG	50	LB				
100003665	CEM CLASS G / PREMIUM BULK	25	SK				
	Premium Cement						
101509387	CHEM, CALCIUM CHLORIDE-PELLET, 50 LB SK	1	SK				

*The Road to Excellence Starts with Safety*

Sold To #: 345242	Ship To #: 2527401	Quote #:	Sales Order #: 0901643481
Customer: NOBLE ENERGY INC E-BUSINESS		Customer Rep: RICK SHEETS	
Well Name: Lower Lathem	Well #: D02-31B	API/UWI #:	
Field:	City (SAP): KERSEY	County/Parish: WELD	State: COLORADO
Legal Description:			
Contractor:		Rig/Platform Name/Num: Workover	
Job BOM: 14099			
Well Type: OIL			
Sales Person: HALAMERICA\HB60191		Srvc Supervisor: Aaron Smith	
<b>Job</b>			

Formation Name			
Formation Depth (MD)	Top		Bottom
Form Type			BHST
Job depth MD	54		Job Depth TVD
Water Depth			Wk Ht Above Floor
Perforation Depth (MD)	From		To

Well Data										
Description	New / Used	Size in	ID in	Weight lbm/ft	Thread	Grade	Top MD ft	Bottom MD ft	Top TVD ft	Bottom TVD ft
Tubing		2.375	1.995	4.6			0	54	0	54
Casing		4.5	4	11.6			0	3600	0	3600

Tools and Accessories									
Type	Size in	Qty	Make	Depth ft		Type	Size in	Qty	Make
Guide Shoe	4.5			3600		Top Plug	4.5		HES
Float Shoe	4.5					Bottom Plug	4.5		HES
Float Collar	4.5					SSR plug set	4.5		HES
Insert Float	4.5					Plug Container	4.5		HES
Stage Tool	4.5					Centralizers	4.5		HES

Miscellaneous Materials									
Gelling Agt		Conc		Surfactant		Conc	Acid Type	Qty	Conc
Treatment Fld		Conc		Inhibitor		Conc	Sand Type	Size	Qty

Fluid Data										
Stage/Plug #: 1										
Fluid #	Stage Type	Fluid Name	Qty	Qty UoM	Mixing Density lbm/gal	Yield ft3/sack	Mix Fluid Gal	Rate bbl/min	Total Mix Fluid Gal	
1	Water	Water	5	bbl	8.34					
Fluid #	Stage Type	Fluid Name	Qty	Qty UoM	Mixing Density lbm/gal	Yield ft3/sack	Mix Fluid Gal	Rate bbl/min	Total Mix Fluid Gal	



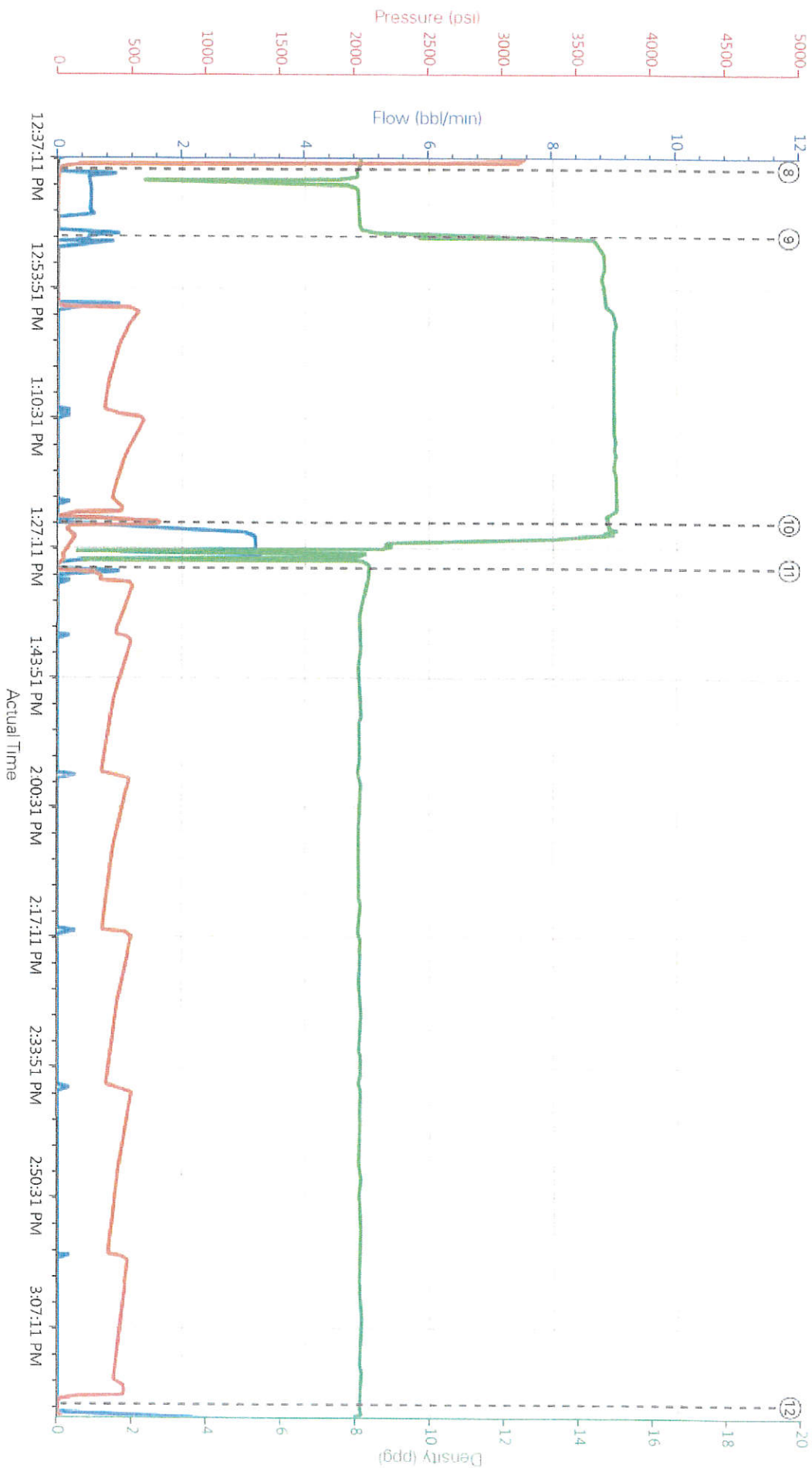
# HALLIBURTON

NOBLE ENERGY INC E-BUSINESS  
NOBLE ENERGY LOWER LATHEM DD2-31B SQUEEZE  
Case 1

## 4.5 Job Event Log

Type	Seq. No.	Activity	Graph Label	Date	Time	Source	Comb Pump Rate (bbl/min)	DH Density (ppg)	PS Pump Press (psi)	Comments
Event	1	Arrive at Location from Other Job or Site	Arrive at Location from Other Job or Site	9/5/2014	12:00:00	USER				ARRIVE AT LOCATION FROM PREVIOUS JOB
Event	2	Pre-Rig Up Safety Meeting	Pre-Rig Up Safety Meeting	9/5/2014	12:05:00	USER				RIG-UP JSA WITH HES CREW
Event	3	Rig-Up Equipment	Rig-Up Equipment	9/5/2014	12:10:00	USER				
Event	4	Rig-Up Completed	Rig-Up Completed	9/5/2014	12:20:00	USER	0.00	8.13	21.00	
Event	5	Pre-Job Safety Meeting	Pre-Job Safety Meeting	9/5/2014	12:25:00	USER	0.00	8.09	-1.00	WITH CUSTOMER REP AND RIG CREW
Event	6	Start Job	Start Job	9/5/2014	12:34:34	COM4	0.00	8.09	-2.00	
Event	7	Test Lines	Test Lines	9/5/2014	12:35:05	COM4	0.00	8.11	7.00	@ 3000 PSI
Event	8	Pump Spacer 1	Pump Spacer 1	9/5/2014	12:39:06	COM4	0.00	8.07	7.00	5 BBLs FRESH WATER
Event	9	Pump Cement	Pump Cement	9/5/2014	12:47:41	COM4	0.50	14.43	-6.00	5 BBLs /25 SKS @ 15.8 PPG, 1.15 YIELD, 5.00 GAL/SK, 1 BBL CEMENT WAS PUMPED IN CASING.
Event	10	Clean Lines	Clean Lines	9/5/2014	13:24:23	USER	0.00	14.85	50.00	WASH PUMPS AND LINES TO THE PIT
Event	11	Start Squeeze	Start Squeeze	9/5/2014	13:30:14	USER	0.00	8.39	225.00	PUMPED 10 BBLs FRESH WATER
Event	12	End Job	End Job	9/5/2014	15:17:21	COM4	0.00	8.06	-1.00	THANKS AARON SMITH AND CREW
Event	13	Pre-Rig Down Safety Meeting	Pre-Rig Down Safety Meeting	9/5/2014	15:30:00	USER				RIG-DOWN JSA WITH HES CREW
Event	14	Rig-Down Equipment	Rig-Down Equipment	9/5/2014	15:35:00	USER				
Event	15	Rig-Down Completed	Rig-Down Completed	9/5/2014	15:45:00	USER				
Event	16	Depart Location for Service Center or Other Site	Depart Location for Service Center or Other Site	9/5/2014	16:00:00	USER				JOURNEY MANAGEMENT MEETING PRIOR TO DEPARTURE

# NOBLE ENERGY LOWER LATHEM DO2-31B SQUEEZE



- ① Arrive at Location from Other Job or Site n/a, n/a, n/a
- ② Pre-Rig Up Safety Meeting n/a, n/a, n/a
- ③ Rig-Up Equipment n/a, n/a, n/a
- ④ Rig-Up Completed 0.8 13.21
- ⑤ Pre-Job Safety Meeting 0.8 09:1
- ⑥ Test Lines 0.8 11.7
- ⑦ Pump Cement 0.5, 14.43 -6
- ⑧ Pump Spacer 1 0.8 07.7
- ⑨ Clean Lines 0.14 95.50
- ⑩ End Job 0