



410 17th Street, Suite 1500
Denver, CO 80202
(720) 440-6100 phone
(720) 305-0804 fax

Bonanzacrk.com

January 7, 2015

Colorado Oil and Gas Conservation Commission
The Chancery Building
1120 Lincoln Street, Suite 801
Denver, CO 80203

Attn: Matthew Lepore, Director

Re: Notice of 318A.a(4).D Well Proposal
State Antelope 44-1-36XRLNB
SHL: SESE (358' FSL, 1210' FEL) Section 1-T5N-R62W, Weld County, CO
Top of Production: (631' FSL and 715' FEL) Section 1-T5N-R62W, Weld County, CO
Bottom of Production: (470' FSL and 705' FEL) Section 36-T6N-R62W, Weld County, CO

Director Lepore:

Bonanza Creek Energy, Inc. (Bonanza) intends to permit, drill and operate the referenced Niobrara Horizontal Well. As defined by Colorado Oil and Gas Conservation Commission (COGCC) Rule 318A.a(4)D., Bonanza proposes the following wellbore spacing unit:

E/2E/2 Section 1-T5N-R62W, and E/2E/2 Section 36-T6N-R62W, Weld County, CO – containing 320 acres more or less

Bonanza is the sole mineral lease holder in the proposed spacing unit, and no mineral owner notifications were required.

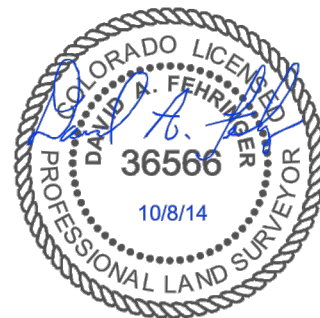
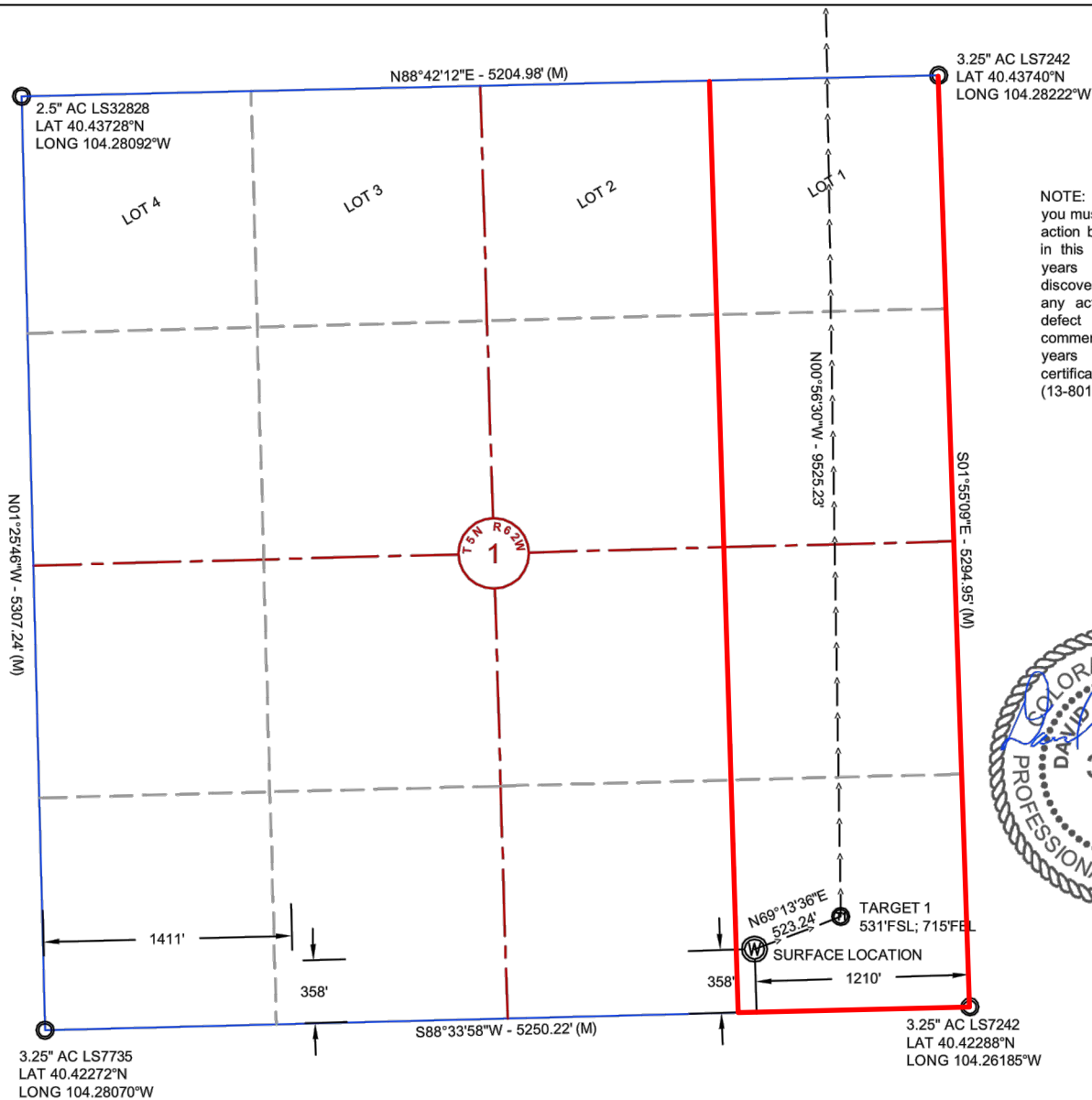
Bonanza respectfully requests that you review the enclosed wellbore spacing unit documentation and approve the referenced APD.

Please do not hesitate to call or email me at (720) 440-6136 or REdelen@Bonanzacrk.com, should you have any questions pertaining to this matter.

Thank you for your cooperation.

Sincerely,

Randy Edelen P.E.
Regulatory Specialist
BONANZA CREEK ENERGY, INC.
BONANZA CREEK ENERGY OPERATING COMPANY, LLC



CERTIFICATE OF SURVEYOR

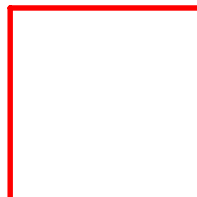
I, David A. Fehring of Lander, Wyoming hereby certify that this well location certificate was prepared from notes taken during an actual survey on SEPTEMBER 21, 2014; and that it correctly shows the drilling location of BONANZA CREEK ENERGY, INC., STATE ANTELOPE 44-1-36XRLNB as staked during said survey. This map does not represent a boundary survey or an improvement location plat and should not be used for the establishment of boundary lines.

NOTES:

- All bearings are GRID based upon the Colorado State Plane Coordinate System, North Zone, NAD83(2011) derived from post-processed static GPS observations.
- Distances are at GROUND
- Vertical Datum is NAVD88 based upon GPS observations
- PDOP value equals 1.4.
- GPS operator: John Stoddard.
- Undisturbed ground elevation at wellhead = 4659.6'



**BONANZA
CREEK**



Wellbore Spacing Unit Outline



Wellbore Spacing Unit Map

03 November 2014 ksc

State Antelope 44-1-36XRLNB
E/2E/2 Sec 01-T5N-R62W 6th PM
E/2E/2 Sec 36-T6N-R62W 6th PM
Weld County, Colorado

2.5" AC LS28657
LAT 40.45128°N
LONG 104.28140°W

2.5" AC LS38019
LAT 40.45182°N
LONG 104.26199°W

N87°03'57"E - 5309.34' (M)

470'

705'

BOTTOM HOLE LOCATION

NOTE: Under Colorado law, you must commence any legal action based upon any defect in this certificate within three years after defect is discovered. In no event, may any action based upon any defect in this survey be commenced more than ten years after date of this certificate shown hereon. (13-80105 C.R.S)

N01°11'40"W - 5101.38' (M)

T6N R62W
36

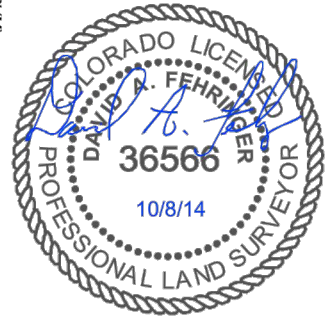
N00°56'30"W - 9625.23'

S00°04'58"E - 5254.26' (M)

2.5" AC LS32828
LAT 40.43728°N
LONG 104.28092°W

N88°42'12"E - 5204.98' (M)

3.25" AC LS7242
LAT 40.43740°N
LONG 104.28222°W



CERTIFICATE OF SURVEYOR

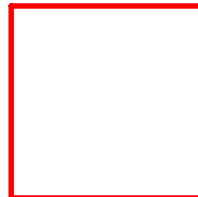
I, David A. Fehring of Lander, Wyoming hereby certify that this well location certificate was prepared from notes taken during an actual survey on SEPTEMBER 21, 2014; and that it correctly shows the drilling location of BONANZA CREEK ENERGY, INC., STATE ANTELOPE 44-1-36XRLNB as staked during said survey. This map does not represent a boundary survey or an improvement location plat and should not be used for the establishment of boundary lines.

NOTES:

- All bearings are GRID based upon the Colorado State Plane Coordinate System, North Zone, NAD83(2011) derived from post-processed static GPS observations.
- Distances are at GROUND
- Vertical Datum is NAVD88 based upon GPS observations
- PDOP value equals 1.4.
- GPS operator: John Stoddard.
- Undisturbed ground elevation at wellhead = 4659.6'



**BONANZA
CREEK**



Wellbore Spacing Unit Outline



Wellbore Spacing Unit Map

03 November 2014 ksc

State Antelope 44-1-36XRLNB p2
E/2E/2 Sec 01-T5N-R62W 6th PM
E/2E/2 Sec 36-T6N-R62W 6th PM
Weld County, Colorado