

BONANZA CREEK ENERGY INC.

WELD COUNTY, COLORADO (NAD 83)

SE SE SEC. 1 T5N R62W 6th P.M.

STATE ANTELOPE 44-1-36XRLNB

ORIGINAL WELLBORE

29 October, 2014

Plan: PROPOSAL #1





Project: WELD COUNTY, COLORADO (NAD 83)
Site: SE SE SEC. 1 T5N R62W 6th P.M.
Well: STATE ANTELOPE 44-1-36XRLNB
Wellbore: ORIGINAL WELLBORE
Design: PROPOSAL #1

ANNOTATIONS									
TVD	MD	Inc	Azi	+N/-S	+E/-W	VSect	Dep	Annotation	
800.0	800.0	0.00	0.00	0.0	0.0	0.0	0.0	START NUDGE (1.5°/100ft BUR)	
1323.7	1325.4	7.88	124.49	-20.4	29.7	-19.0	36.1	EOB TO 7.88° INC	
5108.6	5146.3	7.88	124.49	-317.1	461.6	-294.5	560.0	END OF TANGENT	
5632.3	5671.7	0.00	0.00	-337.5	491.3	-313.5	596.1	EOD TO VERTICAL	
5662.3	5701.7	0.00	0.00	-337.5	491.3	-313.5	596.1	KOP (12°/100ft BUR)	
6123.5	6326.7	75.00	359.86	16.4	490.4	40.0	949.9	START OF TANGENT	
6149.4	6426.7	75.00	359.86	113.0	490.2	136.4	1046.5	END OF TANGENT	
6165.6	6551.7	90.00	359.86	236.6	489.9	259.9	1170.1	7" ICP *NEW* - STATE ANTELOPE 44-1-36XRLNB	
6165.6	16020.5	90.00	359.87	9705.3	467.6	9716.6	10638.9	BHL - STATE ANTELOPE 44-1-36XRLNB	

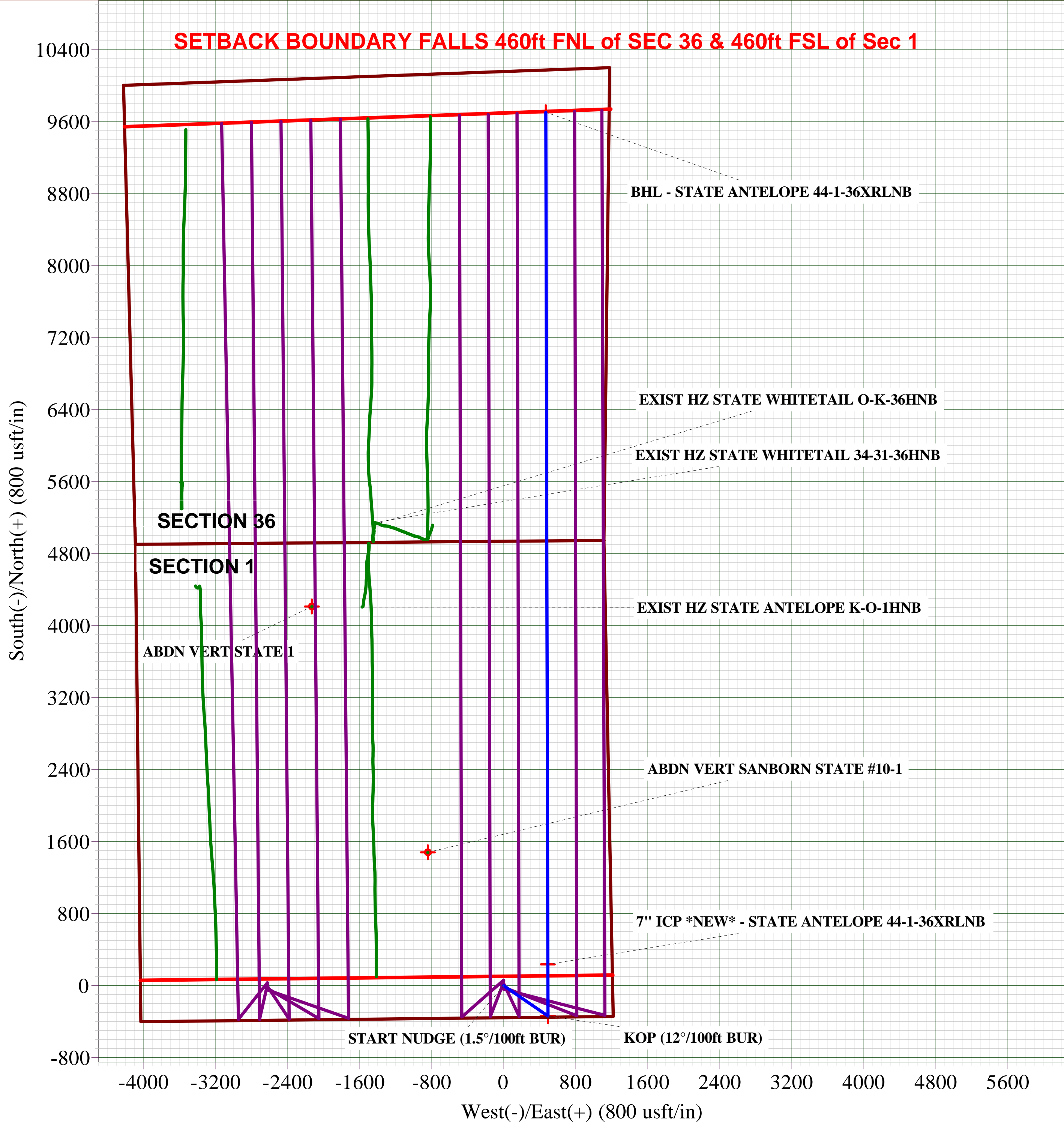
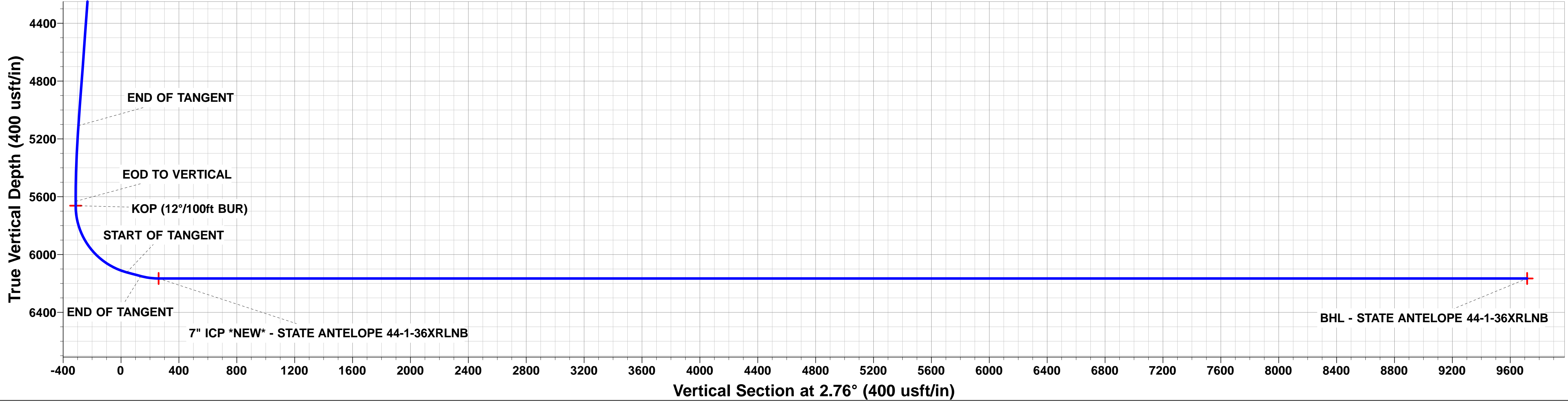
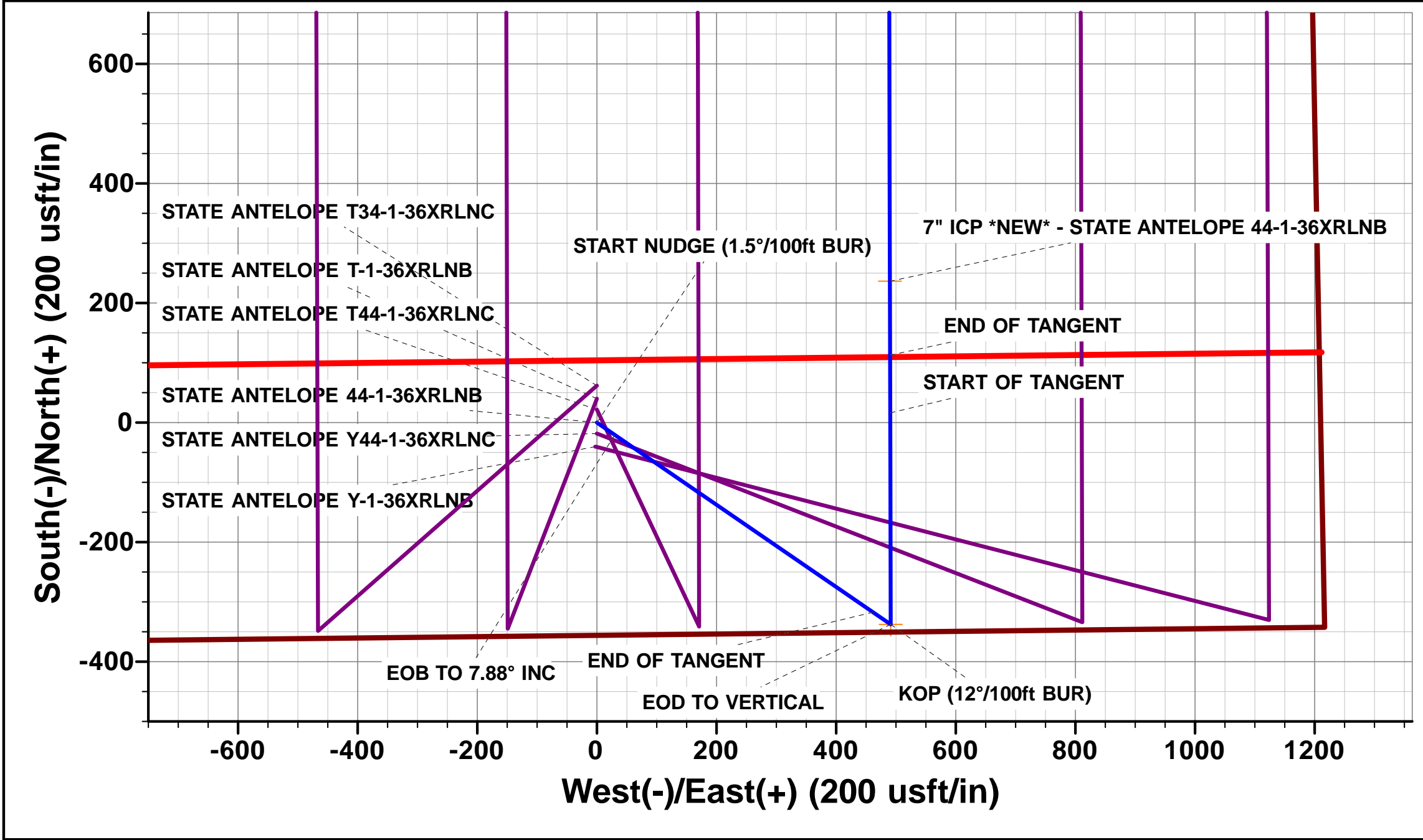
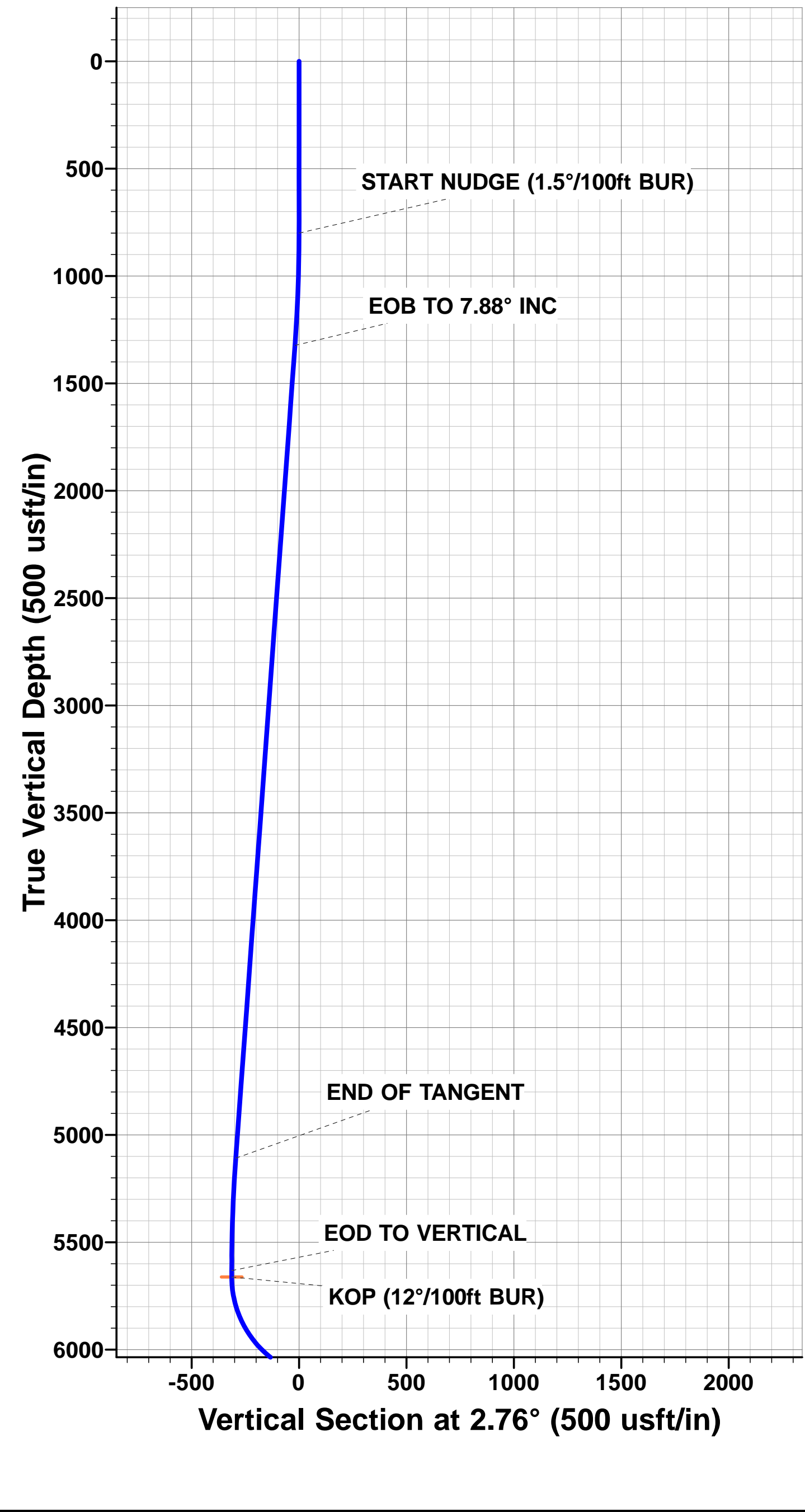
PROPOSED LOCAL COORDINATES:

SHL: 358ft FSL & 1210ft FEL Sec 1

7" ICP *NEW*: 589.1ft FSL & 715ft FEL Sec 1

BHL: 470ft FSL & 705ft FEL Sec 36

WELLBORE TARGET DETAILS (LAT/LONG)					
Name	TVD	+N/-S	+E/-W	Latitude	Longitude
KOP - STATE ANTELOPE 44-1-36XRLNB	5662.3	-337.5	491.3	40.422894	-104.264455
7" ICP *NEW* - STATE ANTELOPE 44-1-36XRLNB	6165.6	236.6	489.9	40.424469	-104.264460
BHL - STATE ANTELOPE 44-1-36XRLNB	6165.6	9705.3	467.6	40.450460	-104.264540



Planning Report



Database:	EDM 5000.1 Single User Db	Local Co-ordinate Reference:	Well STATE ANTELOPE 44-1-36XRLNB
Company:	BONANZA CREEK ENERGY INC.	TVD Reference:	KB-EST @ 4675.6usft (Original Well Elev)
Project:	WELD COUNTY, COLORADO (NAD 83)	MD Reference:	KB-EST @ 4675.6usft (Original Well Elev)
Site:	SE SE SEC. 1 T5N R62W 6th P.M.	North Reference:	True
Well:	STATE ANTELOPE 44-1-36XRLNB	Survey Calculation Method:	Minimum Curvature
Wellbore:	ORIGINAL WELLBORE		
Design:	PROPOSAL #1		

Project	WELD COUNTY, COLORADO (NAD 83)		
Map System:	US State Plane 1983	System Datum:	Mean Sea Level
Geo Datum:	North American Datum 1983		
Map Zone:	Colorado Northern Zone		Using geodetic scale factor

Site	SE SE SEC. 1 T5N R62W 6th P.M.		
Site Position:		Northing:	1,399,587.47 usft
From:	Lat/Long	Easting:	3,343,486.46 usft
Position Uncertainty:	0.0 usft	Slot Radius:	1.10000ft
		Latitude:	40.423710
		Longitude:	-104.266230
		Grid Convergence:	0.80 °

Well	STATE ANTELOPE 44-1-36XRLNB		
Well Position	+N-S	40.1 usft	Northing:
	+E-W	2.8 usft	Easting:
Position Uncertainty		0.0 usft	Wellhead Elevation:
			Latitude:
			Longitude:
			Ground Level:

Wellbore	ORIGINAL WELLBORE				
Magnetics	Model Name	Sample Date	Declination (°)	Dip Angle (°)	Field Strength (nT)
	IGRF2010	29/10/2014	8.14	67.03	52,841

Design	PROPOSAL #1			
Audit Notes:				
Version:	Phase:	PROTOTYPE	Tie On Depth:	0.0
Vertical Section:	Depth From (TVD) (usft)	+N-S (usft)	+E-W (usft)	Direction (°)
	6,165.6	0.0	0.0	2.76

Plan Sections											
MD (usft)	Inc (°)	Azi (°)	Vertical Depth	SS (usft)	+N-S (usft)	+E-W (usft)	Dogleg Rate (°/100usf)	Build Rate (°/100usf)	Turn Rate (°/100usf)	TFO (°)	Target
0.0	0.00	0.00	0.0	-4,675.6	0.0	0.0	0.00	0.00	0.00	0.00	
800.0	0.00	0.00	800.0	-3,875.6	0.0	0.0	0.00	0.00	0.00	0.00	
1,325.4	7.88	124.49	1,323.7	-3,351.9	-20.4	29.7	1.50	1.50	0.00	124.49	
5,146.3	7.88	124.49	5,108.6	433.0	-317.1	461.6	0.00	0.00	0.00	0.00	
5,671.7	0.00	0.00	5,632.3	956.7	-337.5	491.3	1.50	-1.50	0.00	180.00	
5,701.7	0.00	0.00	5,662.3	986.7	-337.5	491.3	0.00	0.00	0.00	0.00	KOP - STATE ANTI
6,326.7	75.00	359.86	6,123.5	1,447.9	16.4	490.4	12.00	12.00	0.00	359.86	
6,426.7	75.00	359.86	6,149.4	1,473.8	113.0	490.2	0.00	0.00	0.00	0.00	
6,551.7	90.00	359.86	6,165.6	1,490.0	236.6	489.9	12.00	12.00	0.00	0.00	
16,020.5	90.00	359.87	6,165.6	1,490.0	9,705.3	467.6	0.00	0.00	0.00	86.68	BHL - STATE ANTI

Planning Report



Database:	EDM 5000.1 Single User Db	Local Co-ordinate Reference:	Well STATE ANTELOPE 44-1-36XRLNB
Company:	BONANZA CREEK ENERGY INC.	TVD Reference:	KB-EST @ 4675.6usft (Original Well Elev)
Project:	WELD COUNTY, COLORADO (NAD 83)	MD Reference:	KB-EST @ 4675.6usft (Original Well Elev)
Site:	SE SE SEC. 1 T5N R62W 6th P.M.	North Reference:	True
Well:	STATE ANTELOPE 44-1-36XRLNB	Survey Calculation Method:	Minimum Curvature
Wellbore:	ORIGINAL WELLBORE		
Design:	PROPOSAL #1		

Planned Survey										
MD (usft)	Inc (°)	Azi (°)	TVD (usft)	SS (usft)	+N/-S (usft)	+E/-W (usft)	Vertical Section (usft)	Dogleg Rate (°/100usft)	Build Rate (°/100usft)	Turn Rate (°/100usft)
0.0	0.00	0.00	0.0	4,675.60	0.0	0.0	0.0	0.00	0.00	0.00
100.0	0.00	0.00	100.0	4,575.60	0.0	0.0	0.0	0.00	0.00	0.00
200.0	0.00	0.00	200.0	4,475.60	0.0	0.0	0.0	0.00	0.00	0.00
300.0	0.00	0.00	300.0	4,375.60	0.0	0.0	0.0	0.00	0.00	0.00
400.0	0.00	0.00	400.0	4,275.60	0.0	0.0	0.0	0.00	0.00	0.00
500.0	0.00	0.00	500.0	4,175.60	0.0	0.0	0.0	0.00	0.00	0.00
600.0	0.00	0.00	600.0	4,075.60	0.0	0.0	0.0	0.00	0.00	0.00
700.0	0.00	0.00	700.0	3,975.60	0.0	0.0	0.0	0.00	0.00	0.00
START NUDGE (1.5°/100ft BUR)										
800.0	0.00	0.00	800.0	3,875.60	0.0	0.0	0.0	0.00	0.00	0.00
900.0	1.50	124.49	900.0	3,775.61	-0.7	1.1	-0.7	1.50	1.50	0.00
1,000.0	3.00	124.49	999.9	3,675.69	-3.0	4.3	-2.8	1.50	1.50	0.00
1,100.0	4.50	124.49	1,099.7	3,575.91	-6.7	9.7	-6.2	1.50	1.50	0.00
1,200.0	6.00	124.49	1,199.3	3,476.33	-11.8	17.2	-11.0	1.50	1.50	0.00
1,300.0	7.50	124.49	1,298.6	3,377.03	-18.5	26.9	-17.2	1.50	1.50	0.00
EOB TO 7.88° INC										
1,325.4	7.88	124.49	1,323.7	3,351.86	-20.4	29.7	-19.0	1.50	1.50	0.00
1,400.0	7.88	124.49	1,397.6	3,277.96	-26.2	38.2	-24.4	0.00	0.00	0.00
1,500.0	7.88	124.49	1,496.7	3,178.90	-34.0	49.5	-31.6	0.00	0.00	0.00
1,600.0	7.88	124.49	1,595.8	3,079.85	-41.7	60.8	-38.8	0.00	0.00	0.00
1,700.0	7.88	124.49	1,694.8	2,980.79	-49.5	72.1	-46.0	0.00	0.00	0.00
1,800.0	7.88	124.49	1,793.9	2,881.74	-57.3	83.4	-53.2	0.00	0.00	0.00
1,900.0	7.88	124.49	1,892.9	2,782.68	-65.0	94.7	-60.4	0.00	0.00	0.00
2,000.0	7.88	124.49	1,992.0	2,683.63	-72.8	106.0	-67.6	0.00	0.00	0.00
2,100.0	7.88	124.49	2,091.0	2,584.57	-80.6	117.3	-74.8	0.00	0.00	0.00
2,200.0	7.88	124.49	2,190.1	2,485.52	-88.3	128.6	-82.0	0.00	0.00	0.00
2,300.0	7.88	124.49	2,289.1	2,386.46	-96.1	139.9	-89.3	0.00	0.00	0.00
2,400.0	7.88	124.49	2,388.2	2,287.40	-103.9	151.2	-96.5	0.00	0.00	0.00
2,500.0	7.88	124.49	2,487.3	2,188.35	-111.6	162.5	-103.7	0.00	0.00	0.00
2,600.0	7.88	124.49	2,586.3	2,089.29	-119.4	173.8	-110.9	0.00	0.00	0.00
2,700.0	7.88	124.49	2,685.4	1,990.24	-127.1	185.1	-118.1	0.00	0.00	0.00
2,800.0	7.88	124.49	2,784.4	1,891.18	-134.9	196.4	-125.3	0.00	0.00	0.00
2,900.0	7.88	124.49	2,883.5	1,792.13	-142.7	207.7	-132.5	0.00	0.00	0.00
3,000.0	7.88	124.49	2,982.5	1,693.07	-150.4	219.0	-139.7	0.00	0.00	0.00
3,100.0	7.88	124.49	3,081.6	1,594.02	-158.2	230.3	-146.9	0.00	0.00	0.00
3,200.0	7.88	124.49	3,180.6	1,494.96	-166.0	241.6	-154.1	0.00	0.00	0.00
3,300.0	7.88	124.49	3,279.7	1,395.90	-173.7	252.9	-161.4	0.00	0.00	0.00
3,400.0	7.88	124.49	3,378.8	1,296.85	-181.5	264.2	-168.6	0.00	0.00	0.00
3,500.0	7.88	124.49	3,477.8	1,197.79	-189.3	275.5	-175.8	0.00	0.00	0.00
3,600.0	7.88	124.49	3,576.9	1,098.74	-197.0	286.8	-183.0	0.00	0.00	0.00
3,700.0	7.88	124.49	3,675.9	999.68	-204.8	298.1	-190.2	0.00	0.00	0.00
3,800.0	7.88	124.49	3,775.0	900.63	-212.5	309.4	-197.4	0.00	0.00	0.00
3,900.0	7.88	124.49	3,874.0	801.57	-220.3	320.7	-204.6	0.00	0.00	0.00
4,000.0	7.88	124.49	3,973.1	702.52	-228.1	332.0	-211.8	0.00	0.00	0.00
4,100.0	7.88	124.49	4,072.1	603.46	-235.8	343.3	-219.0	0.00	0.00	0.00
4,200.0	7.88	124.49	4,171.2	504.41	-243.6	354.6	-226.3	0.00	0.00	0.00
4,300.0	7.88	124.49	4,270.3	405.35	-251.4	365.9	-233.5	0.00	0.00	0.00
4,400.0	7.88	124.49	4,369.3	306.29	-259.1	377.2	-240.7	0.00	0.00	0.00
4,500.0	7.88	124.49	4,468.4	207.24	-266.9	388.5	-247.9	0.00	0.00	0.00
4,600.0	7.88	124.49	4,567.4	108.18	-274.7	399.8	-255.1	0.00	0.00	0.00
4,700.0	7.88	124.49	4,666.5	9.13	-282.4	411.1	-262.3	0.00	0.00	0.00
4,800.0	7.88	124.49	4,765.5	-89.93	-290.2	422.4	-269.5	0.00	0.00	0.00
4,900.0	7.88	124.49	4,864.6	-188.98	-298.0	433.7	-276.7	0.00	0.00	0.00
5,000.0	7.88	124.49	4,963.6	-288.04	-305.7	445.0	-283.9	0.00	0.00	0.00

Planning Report



Database:	EDM 5000.1 Single User Db	Local Co-ordinate Reference:	Well STATE ANTELOPE 44-1-36XRLNB
Company:	BONANZA CREEK ENERGY INC.	TVD Reference:	KB-EST @ 4675.6usft (Original Well Elev)
Project:	WELD COUNTY, COLORADO (NAD 83)	MD Reference:	KB-EST @ 4675.6usft (Original Well Elev)
Site:	SE SE SEC. 1 T5N R62W 6th P.M.	North Reference:	True
Well:	STATE ANTELOPE 44-1-36XRLNB	Survey Calculation Method:	Minimum Curvature
Wellbore:	ORIGINAL WELLBORE		
Design:	PROPOSAL #1		

Planned Survey

MD (usft)	Inc (°)	Azi (°)	TVD (usft)	SS (usft)	+N/-S (usft)	+E/-W (usft)	Vertical Section (usft)	Dogleg Rate (°/100usft)	Build Rate (°/100usft)	Turn Rate (°/100usft)
5,100.0	7.88	124.49	5,062.7	-387.09	-313.5	456.3	-291.2	0.00	0.00	0.00
END OF TANGENT										
5,146.3	7.88	124.49	5,108.6	-432.96	-317.1	461.6	-294.5	0.00	0.00	0.00
5,200.0	7.08	124.49	5,161.8	-486.20	-321.0	467.3	-298.2	1.50	-1.50	0.00
5,300.0	5.58	124.49	5,261.2	-585.59	-327.3	476.4	-304.0	1.50	-1.50	0.00
5,400.0	4.08	124.49	5,360.8	-685.23	-332.0	483.3	-308.4	1.50	-1.50	0.00
5,500.0	2.58	124.49	5,460.7	-785.06	-335.3	488.1	-311.4	1.50	-1.50	0.00
5,600.0	1.08	124.49	5,560.6	-885.01	-337.1	490.7	-313.1	1.50	-1.50	0.00
EOD TO VERTICAL										
5,671.7	0.00	0.00	5,632.3	-956.70	-337.5	491.3	-313.5	1.50	-1.50	0.00
5,700.0	0.00	0.00	5,660.6	-985.00	-337.5	491.3	-313.5	0.00	0.00	0.00
KOP (12°/100ft BUR)										
5,701.7	0.00	0.00	5,662.3	-986.70	-337.5	491.3	-313.5	0.00	0.00	0.00
5,800.0	11.80	359.86	5,759.9	-1,084.31	-327.4	491.3	-303.4	12.00	12.00	0.00
5,900.0	23.80	359.86	5,855.0	-1,179.35	-296.9	491.2	-272.9	12.00	12.00	0.00
6,000.0	35.80	359.86	5,941.6	-1,265.97	-247.3	491.1	-223.4	12.00	12.00	0.00
6,100.0	47.80	359.86	6,016.0	-1,340.39	-180.8	490.9	-156.9	12.00	12.00	0.00
6,200.0	59.80	359.86	6,074.9	-1,399.35	-100.2	490.7	-76.5	12.00	12.00	0.00
6,300.0	71.80	359.86	6,115.9	-1,440.27	-9.2	490.5	14.4	12.00	12.00	0.00
START OF TANGENT										
6,326.7	75.00	359.86	6,123.5	-1,447.90	16.4	490.4	40.0	12.00	12.00	0.00
6,400.0	75.00	359.86	6,142.5	-1,466.87	87.2	490.3	110.7	0.00	0.00	0.00
END OF TANGENT										
6,426.7	75.00	359.86	6,149.4	-1,473.78	113.0	490.2	136.4	0.00	0.00	0.00
6,500.0	83.80	359.86	6,162.9	-1,487.25	185.0	490.0	208.3	12.00	12.00	0.00
7" ICP *NEW* - STATE ANTELOPE 44-1-36XRLNB										
6,551.7	90.00	359.86	6,165.6	-1,490.05	236.6	489.9	259.9	12.00	12.00	0.00
6,600.0	90.00	359.86	6,165.6	-1,490.05	284.9	489.8	308.1	0.00	0.00	0.00
6,700.0	90.00	359.86	6,165.6	-1,490.05	384.9	489.5	408.0	0.00	0.00	0.00
6,800.0	90.00	359.86	6,165.6	-1,490.05	484.9	489.3	507.8	0.00	0.00	0.00
6,900.0	90.00	359.86	6,165.6	-1,490.05	584.9	489.0	607.7	0.00	0.00	0.00
7,000.0	90.00	359.86	6,165.6	-1,490.05	684.9	488.8	707.6	0.00	0.00	0.00
7,100.0	90.00	359.86	6,165.6	-1,490.05	784.9	488.6	807.5	0.00	0.00	0.00
7,200.0	90.00	359.86	6,165.6	-1,490.05	884.9	488.3	907.3	0.00	0.00	0.00
7,300.0	90.00	359.86	6,165.6	-1,490.05	984.9	488.1	1,007.2	0.00	0.00	0.00
7,400.0	90.00	359.86	6,165.6	-1,490.05	1,084.9	487.8	1,107.1	0.00	0.00	0.00
7,500.0	90.00	359.86	6,165.6	-1,490.05	1,184.9	487.6	1,206.9	0.00	0.00	0.00
7,600.0	90.00	359.86	6,165.6	-1,490.05	1,284.9	487.3	1,306.8	0.00	0.00	0.00
7,700.0	90.00	359.86	6,165.6	-1,490.05	1,384.9	487.1	1,406.7	0.00	0.00	0.00
7,800.0	90.00	359.86	6,165.6	-1,490.05	1,484.9	486.9	1,506.6	0.00	0.00	0.00
7,900.0	90.00	359.86	6,165.6	-1,490.05	1,584.9	486.6	1,606.4	0.00	0.00	0.00
8,000.0	90.00	359.86	6,165.6	-1,490.05	1,684.9	486.4	1,706.3	0.00	0.00	0.00
8,100.0	90.00	359.86	6,165.6	-1,490.05	1,784.9	486.1	1,806.2	0.00	0.00	0.00
8,200.0	90.00	359.86	6,165.6	-1,490.05	1,884.9	485.9	1,906.1	0.00	0.00	0.00
8,300.0	90.00	359.86	6,165.6	-1,490.05	1,984.9	485.7	2,005.9	0.00	0.00	0.00
8,400.0	90.00	359.86	6,165.6	-1,490.04	2,084.9	485.4	2,105.8	0.00	0.00	0.00
8,500.0	90.00	359.86	6,165.6	-1,490.04	2,184.9	485.2	2,205.7	0.00	0.00	0.00
8,600.0	90.00	359.86	6,165.6	-1,490.04	2,284.9	484.9	2,305.5	0.00	0.00	0.00
8,700.0	90.00	359.86	6,165.6	-1,490.04	2,384.9	484.7	2,405.4	0.00	0.00	0.00
8,800.0	90.00	359.86	6,165.6	-1,490.04	2,484.9	484.4	2,505.3	0.00	0.00	0.00
8,900.0	90.00	359.86	6,165.6	-1,490.04	2,584.9	484.2	2,605.2	0.00	0.00	0.00
9,000.0	90.00	359.86	6,165.6	-1,490.04	2,684.9	484.0	2,705.0	0.00	0.00	0.00
9,100.0	90.00	359.86	6,165.6	-1,490.04	2,784.9	483.7	2,804.9	0.00	0.00	0.00

Planning Report



Database:	EDM 5000.1 Single User Db	Local Co-ordinate Reference:	Well STATE ANTELOPE 44-1-36XRLNB
Company:	BONANZA CREEK ENERGY INC.	TVD Reference:	KB-EST @ 4675.6usft (Original Well Elev)
Project:	WELD COUNTY, COLORADO (NAD 83)	MD Reference:	KB-EST @ 4675.6usft (Original Well Elev)
Site:	SE SE SEC. 1 T5N R62W 6th P.M.	North Reference:	True
Well:	STATE ANTELOPE 44-1-36XRLNB	Survey Calculation Method:	Minimum Curvature
Wellbore:	ORIGINAL WELLBORE		
Design:	PROPOSAL #1		

Planned Survey										
MD (usft)	Inc (°)	Azi (°)	TVD (usft)	SS (usft)	+N/-S (usft)	+E/-W (usft)	Vertical Section (usft)	Dogleg Rate (°/100usft)	Build Rate (°/100usft)	Turn Rate (°/100usft)
9,200.0	90.00	359.86	6,165.6	-1,490.04	2,884.8	483.5	2,904.8	0.00	0.00	0.00
9,300.0	90.00	359.86	6,165.6	-1,490.04	2,984.8	483.2	3,004.6	0.00	0.00	0.00
9,400.0	90.00	359.86	6,165.6	-1,490.04	3,084.8	483.0	3,104.5	0.00	0.00	0.00
9,500.0	90.00	359.86	6,165.6	-1,490.04	3,184.8	482.8	3,204.4	0.00	0.00	0.00
9,600.0	90.00	359.86	6,165.6	-1,490.04	3,284.8	482.5	3,304.3	0.00	0.00	0.00
9,700.0	90.00	359.86	6,165.6	-1,490.04	3,384.8	482.3	3,404.1	0.00	0.00	0.00
9,800.0	90.00	359.86	6,165.6	-1,490.04	3,484.8	482.1	3,504.0	0.00	0.00	0.00
9,900.0	90.00	359.86	6,165.6	-1,490.04	3,584.8	481.8	3,603.9	0.00	0.00	0.00
10,000.0	90.00	359.86	6,165.6	-1,490.04	3,684.8	481.6	3,703.8	0.00	0.00	0.00
10,100.0	90.00	359.86	6,165.6	-1,490.04	3,784.8	481.3	3,803.6	0.00	0.00	0.00
10,200.0	90.00	359.86	6,165.6	-1,490.04	3,884.8	481.1	3,903.5	0.00	0.00	0.00
10,300.0	90.00	359.86	6,165.6	-1,490.04	3,984.8	480.9	4,003.4	0.00	0.00	0.00
10,400.0	90.00	359.86	6,165.6	-1,490.04	4,084.8	480.6	4,103.2	0.00	0.00	0.00
10,500.0	90.00	359.86	6,165.6	-1,490.04	4,184.8	480.4	4,203.1	0.00	0.00	0.00
10,600.0	90.00	359.86	6,165.6	-1,490.04	4,284.8	480.2	4,303.0	0.00	0.00	0.00
10,700.0	90.00	359.86	6,165.6	-1,490.04	4,384.8	479.9	4,402.9	0.00	0.00	0.00
10,800.0	90.00	359.86	6,165.6	-1,490.04	4,484.8	479.7	4,502.7	0.00	0.00	0.00
10,900.0	90.00	359.86	6,165.6	-1,490.04	4,584.8	479.4	4,602.6	0.00	0.00	0.00
11,000.0	90.00	359.86	6,165.6	-1,490.04	4,684.8	479.2	4,702.5	0.00	0.00	0.00
11,100.0	90.00	359.86	6,165.6	-1,490.04	4,784.8	479.0	4,802.3	0.00	0.00	0.00
11,200.0	90.00	359.86	6,165.6	-1,490.04	4,884.8	478.7	4,902.2	0.00	0.00	0.00
11,300.0	90.00	359.86	6,165.6	-1,490.03	4,984.8	478.5	5,002.1	0.00	0.00	0.00
11,400.0	90.00	359.86	6,165.6	-1,490.03	5,084.8	478.3	5,102.0	0.00	0.00	0.00
11,500.0	90.00	359.87	6,165.6	-1,490.03	5,184.8	478.0	5,201.8	0.00	0.00	0.00
11,600.0	90.00	359.87	6,165.6	-1,490.03	5,284.8	477.8	5,301.7	0.00	0.00	0.00
11,700.0	90.00	359.87	6,165.6	-1,490.03	5,384.8	477.6	5,401.6	0.00	0.00	0.00
11,800.0	90.00	359.87	6,165.6	-1,490.03	5,484.8	477.3	5,501.5	0.00	0.00	0.00
11,900.0	90.00	359.87	6,165.6	-1,490.03	5,584.8	477.1	5,601.3	0.00	0.00	0.00
12,000.0	90.00	359.87	6,165.6	-1,490.03	5,684.8	476.9	5,701.2	0.00	0.00	0.00
12,100.0	90.00	359.87	6,165.6	-1,490.03	5,784.8	476.6	5,801.1	0.00	0.00	0.00
12,200.0	90.00	359.87	6,165.6	-1,490.03	5,884.8	476.4	5,900.9	0.00	0.00	0.00
12,300.0	90.00	359.87	6,165.6	-1,490.03	5,984.8	476.1	6,000.8	0.00	0.00	0.00
12,400.0	90.00	359.87	6,165.6	-1,490.03	6,084.8	475.9	6,100.7	0.00	0.00	0.00
12,500.0	90.00	359.87	6,165.6	-1,490.03	6,184.8	475.7	6,200.6	0.00	0.00	0.00
12,600.0	90.00	359.87	6,165.6	-1,490.03	6,284.8	475.4	6,300.4	0.00	0.00	0.00
12,700.0	90.00	359.87	6,165.6	-1,490.03	6,384.8	475.2	6,400.3	0.00	0.00	0.00
12,800.0	90.00	359.87	6,165.6	-1,490.03	6,484.8	475.0	6,500.2	0.00	0.00	0.00
12,900.0	90.00	359.87	6,165.6	-1,490.03	6,584.8	474.7	6,600.1	0.00	0.00	0.00
13,000.0	90.00	359.87	6,165.6	-1,490.03	6,684.8	474.5	6,699.9	0.00	0.00	0.00
13,100.0	90.00	359.87	6,165.6	-1,490.02	6,784.8	474.3	6,799.8	0.00	0.00	0.00
13,200.0	90.00	359.87	6,165.6	-1,490.02	6,884.8	474.1	6,899.7	0.00	0.00	0.00
13,300.0	90.00	359.87	6,165.6	-1,490.02	6,984.8	473.8	6,999.5	0.00	0.00	0.00
13,400.0	90.00	359.87	6,165.6	-1,490.02	7,084.8	473.6	7,099.4	0.00	0.00	0.00
13,500.0	90.00	359.87	6,165.6	-1,490.02	7,184.8	473.4	7,199.3	0.00	0.00	0.00
13,600.0	90.00	359.87	6,165.6	-1,490.02	7,284.8	473.1	7,299.2	0.00	0.00	0.00
13,700.0	90.00	359.87	6,165.6	-1,490.02	7,384.8	472.9	7,399.0	0.00	0.00	0.00
13,800.0	90.00	359.87	6,165.6	-1,490.02	7,484.8	472.7	7,498.9	0.00	0.00	0.00
13,900.0	90.00	359.87	6,165.6	-1,490.02	7,584.8	472.4	7,598.8	0.00	0.00	0.00
14,000.0	90.00	359.87	6,165.6	-1,490.02	7,684.8	472.2	7,698.7	0.00	0.00	0.00
14,100.0	90.00	359.87	6,165.6	-1,490.02	7,784.8	472.0	7,798.5	0.00	0.00	0.00
14,200.0	90.00	359.87	6,165.6	-1,490.02	7,884.8	471.7	7,898.4	0.00	0.00	0.00
14,300.0	90.00	359.87	6,165.6	-1,490.02	7,984.8	471.5	7,998.3	0.00	0.00	0.00
14,400.0	90.00	359.87	6,165.6	-1,490.01	8,084.8	471.3	8,098.1	0.00	0.00	0.00
14,500.0	90.00	359.87	6,165.6	-1,490.01	8,184.8	471.0	8,198.0	0.00	0.00	0.00

Planning Report



Database:	EDM 5000.1 Single User Db	Local Co-ordinate Reference:	Well STATE ANTELOPE 44-1-36XRLNB
Company:	BONANZA CREEK ENERGY INC.	TVD Reference:	KB-EST @ 4675.6usft (Original Well Elev)
Project:	WELD COUNTY, COLORADO (NAD 83)	MD Reference:	KB-EST @ 4675.6usft (Original Well Elev)
Site:	SE SE SEC. 1 T5N R62W 6th P.M.	North Reference:	True
Well:	STATE ANTELOPE 44-1-36XRLNB	Survey Calculation Method:	Minimum Curvature
Wellbore:	ORIGINAL WELLBORE		
Design:	PROPOSAL #1		

Planned Survey

MD (usft)	Inc (°)	Azi (°)	TVD (usft)	SS (usft)	+N/-S (usft)	+E/-W (usft)	Vertical Section (usft)	Dogleg Rate (°/100usft)	Build Rate (°/100usft)	Turn Rate (°/100usft)
14,600.0	90.00	359.87	6,165.6	-1,490.01	8,284.8	470.8	8,297.9	0.00	0.00	0.00
14,700.0	90.00	359.87	6,165.6	-1,490.01	8,384.8	470.6	8,397.8	0.00	0.00	0.00
14,800.0	90.00	359.87	6,165.6	-1,490.01	8,484.8	470.4	8,497.6	0.00	0.00	0.00
14,900.0	90.00	359.87	6,165.6	-1,490.01	8,584.8	470.1	8,597.5	0.00	0.00	0.00
15,000.0	90.00	359.87	6,165.6	-1,490.01	8,684.8	469.9	8,697.4	0.00	0.00	0.00
15,100.0	90.00	359.87	6,165.6	-1,490.01	8,784.8	469.7	8,797.3	0.00	0.00	0.00
15,200.0	90.00	359.87	6,165.6	-1,490.01	8,884.8	469.4	8,897.1	0.00	0.00	0.00
15,300.0	90.00	359.87	6,165.6	-1,490.01	8,984.8	469.2	8,997.0	0.00	0.00	0.00
15,400.0	90.00	359.87	6,165.6	-1,490.01	9,084.8	469.0	9,096.9	0.00	0.00	0.00
15,500.0	90.00	359.87	6,165.6	-1,490.00	9,184.8	468.8	9,196.7	0.00	0.00	0.00
15,600.0	90.00	359.87	6,165.6	-1,490.00	9,284.8	468.5	9,296.6	0.00	0.00	0.00
15,700.0	90.00	359.87	6,165.6	-1,490.00	9,384.8	468.3	9,396.5	0.00	0.00	0.00
15,800.0	90.00	359.87	6,165.6	-1,490.00	9,484.8	468.1	9,496.4	0.00	0.00	0.00
15,900.0	90.00	359.87	6,165.6	-1,490.00	9,584.8	467.8	9,596.2	0.00	0.00	0.00
16,000.0	90.00	359.87	6,165.6	-1,490.00	9,684.8	467.6	9,696.1	0.00	0.00	0.00
BHL - STATE ANTELOPE 44-1-36XRLNB										
16,020.5	90.00	359.87	6,165.6	-1,490.00	9,705.3	467.6	9,716.6	0.00	0.00	0.00

Plan Annotations

MD (usft)	TVD (usft)	Local Coordinates		Comment
		+N/-S (usft)	+E/-W (usft)	
800.0	800.0	0.0	0.0	START NUDGE (1.5°/100ft BUR)
1,325.4	1,323.7	-20.4	29.7	EOB TO 7.88° INC
5,146.3	5,108.6	-317.1	461.6	END OF TANGENT
5,671.7	5,632.3	-337.5	491.3	EOD TO VERTICAL
5,701.7	5,662.3	-337.5	491.3	KOP (12°/100ft BUR)
6,326.7	6,123.5	16.4	490.4	START OF TANGENT
6,426.7	6,149.4	113.0	490.2	END OF TANGENT
6,551.7	6,165.6	236.6	489.9	7" ICP *NEW* - STATE ANTELOPE 44-1-36XRLNB
16,020.5	6,165.6	9,705.3	467.6	BHL - STATE ANTELOPE 44-1-36XRLNB